



JAYPEE GREENS

Another Place. Another World.

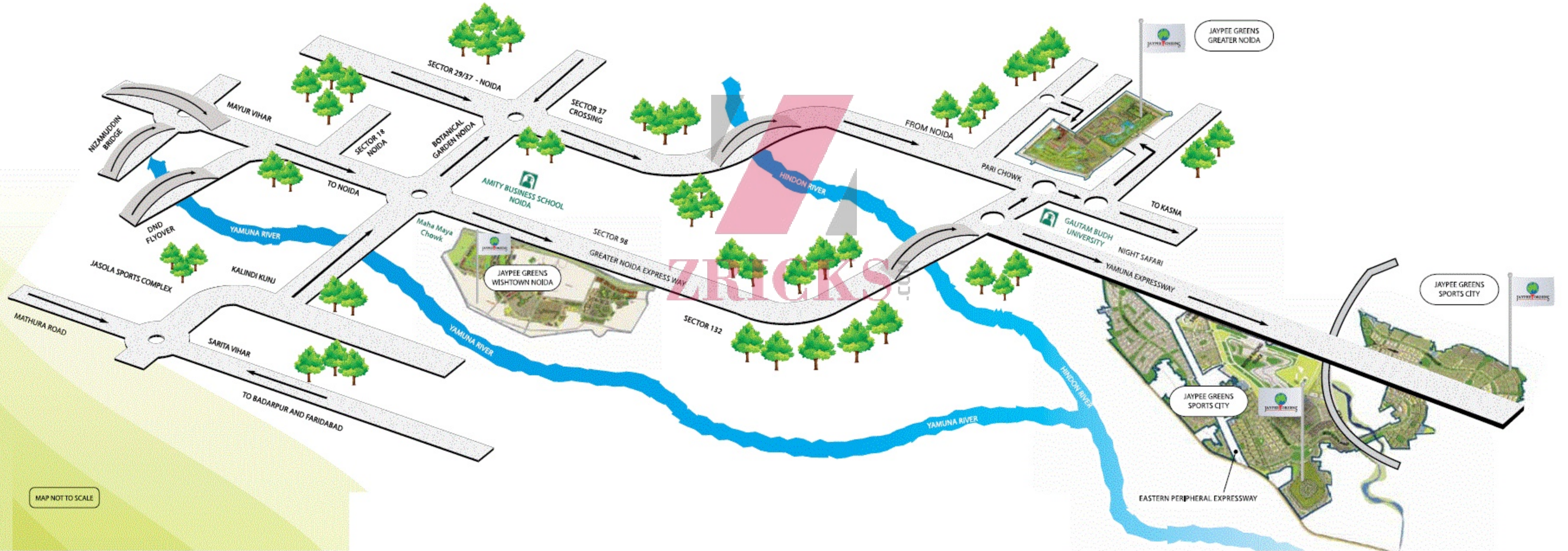
Imperial Court



ZRICKS

COM

JAYPEE GREENS Location Map



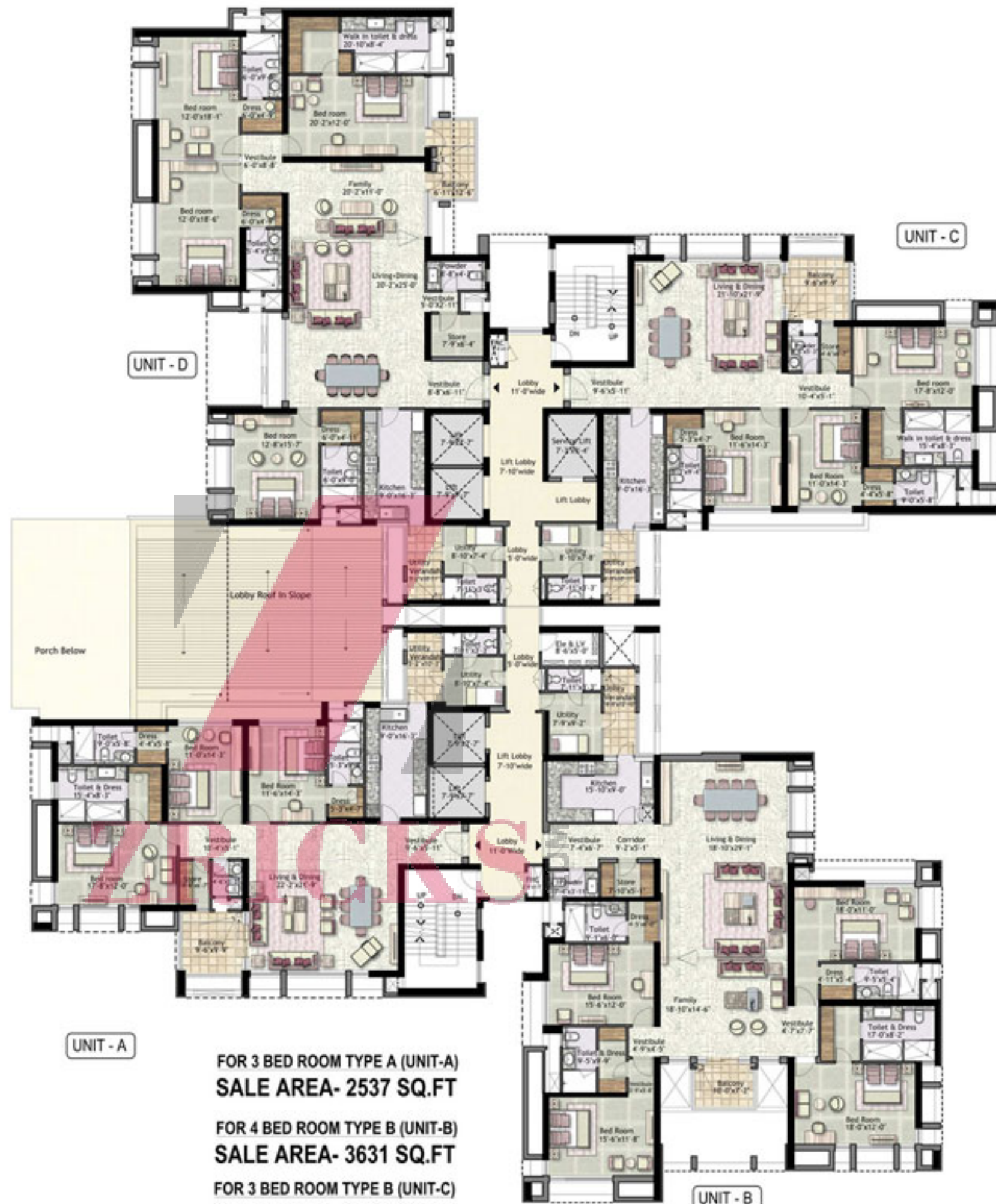


JAYPEE GREENS, WISH TOWN, NOIDA MASTER PLAN

ARCOP



ZIRICKS.COM



FOR 3 BED ROOM TYPE A (UNIT-A)
SALE AREA- 2537 SQ.FT

FOR 4 BED ROOM TYPE B (UNIT-B)
SALE AREA- 3631 SQ.FT

FOR 3 BED ROOM TYPE B (UNIT-C)
SALE AREA- 2539 SQ.FT

FOR 4 BED ROOM TYPE A (UNIT-D)
SALE AREA- 3615 SQ.FT

FIRST FLOOR PLAN
SCALE 1:200



4 BHK

3 BHK

4

2

1

I-1

3 BHK

4 BHK

4 BHK

3 BHK

4

2

1

I-2

3 BHK

4 BHK

4 BHK

3 BHK

4

2

1

I-3

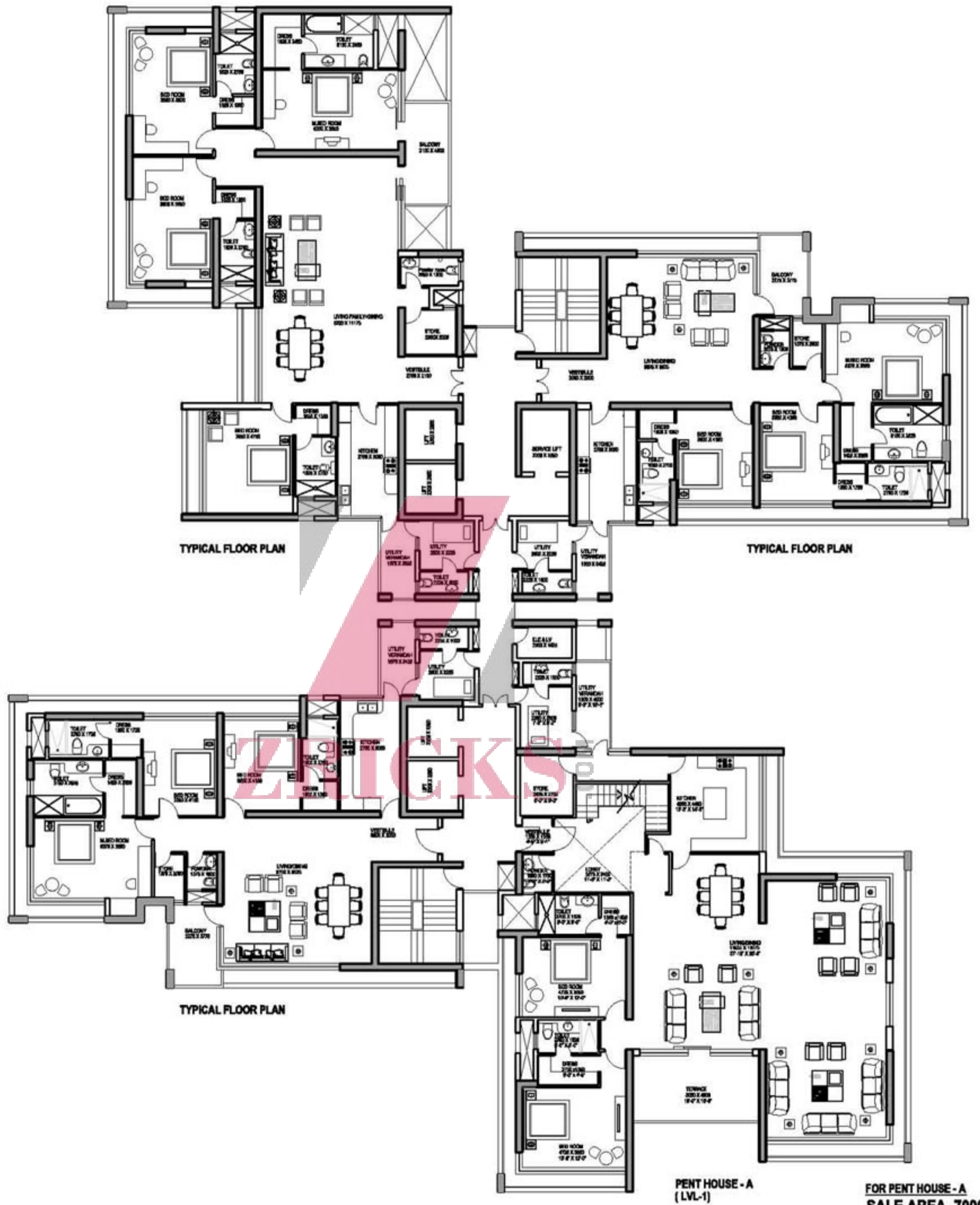
3 BHK

4 BHK



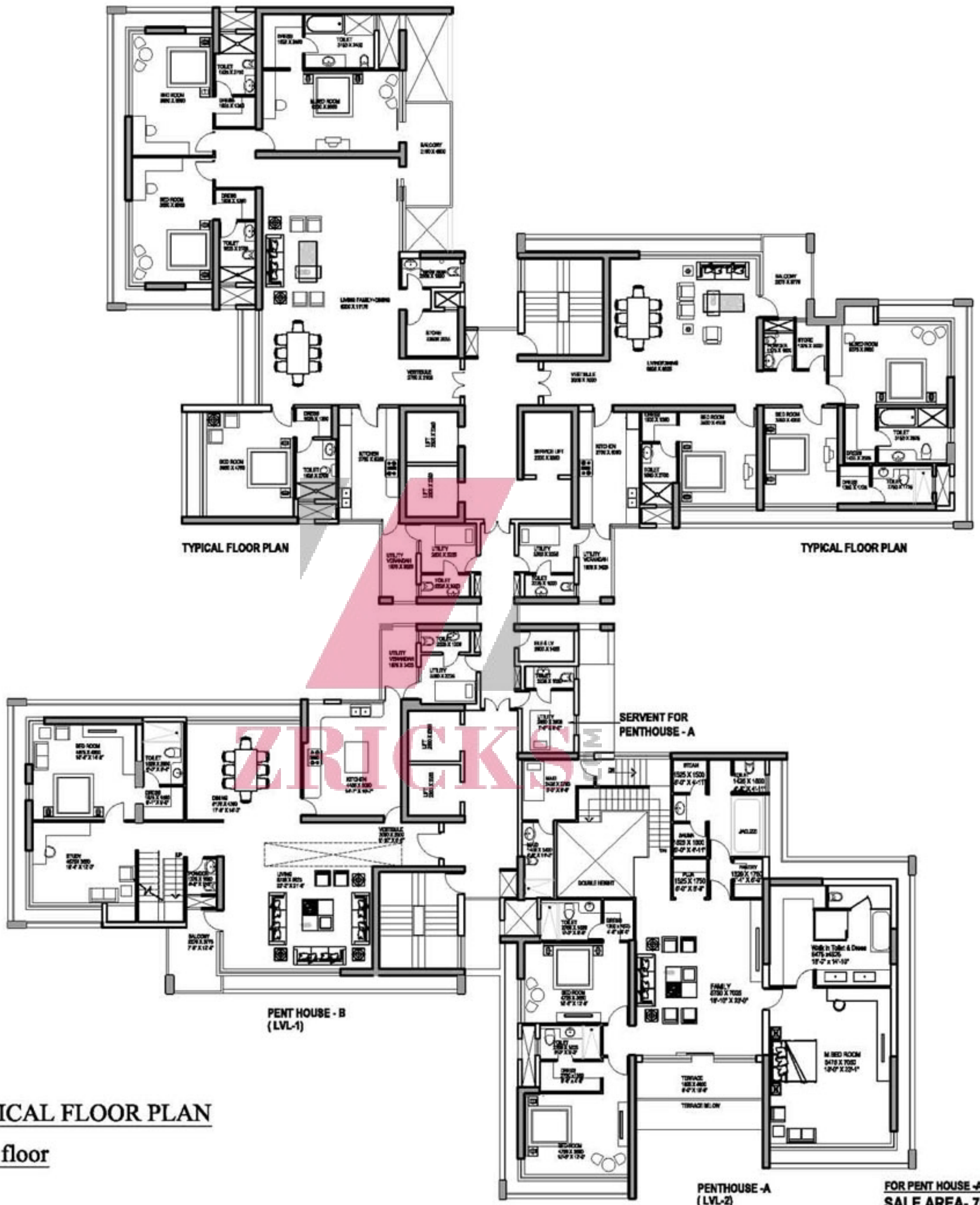


GROUND FLOOR PLAN
SCALE 1:200



TYPICAL FLOOR PLAN

29th floor

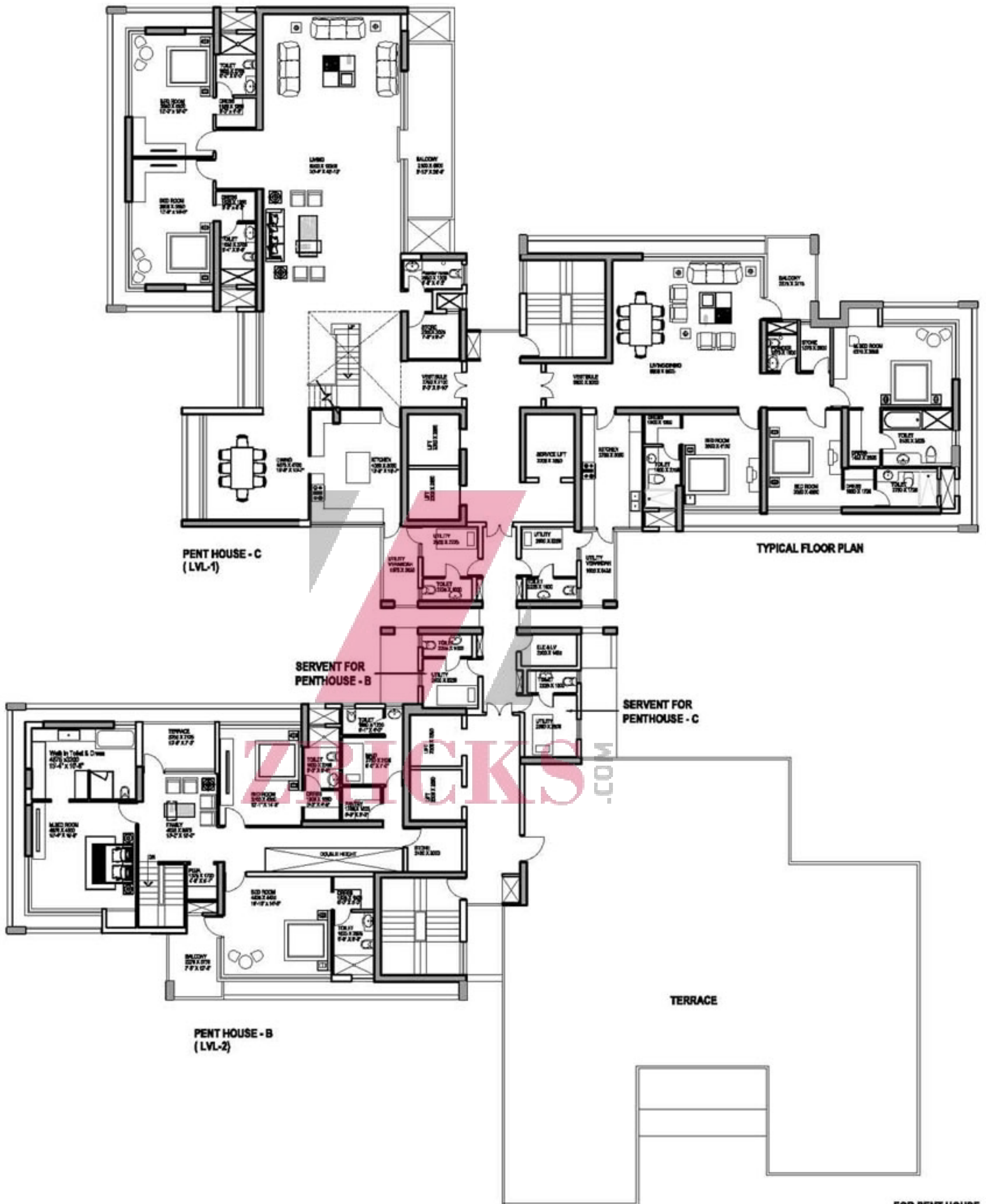


TYPICAL FLOOR PLAN

30th floor

PENTHOUSE - A
(LVL-2)

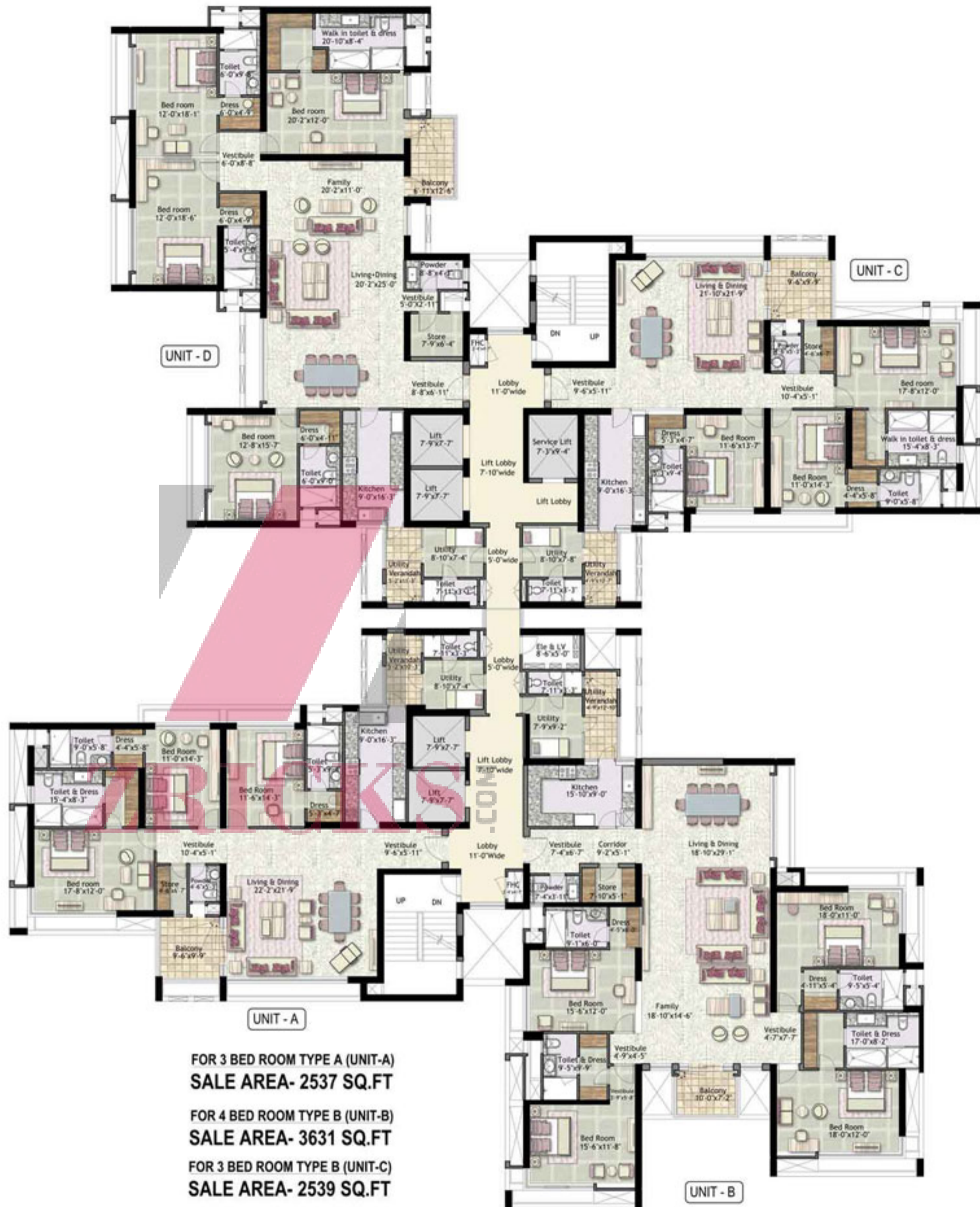
FOR PENT HOUSE -A
SALE AREA- 7000 SQ.FT
FOR PENT HOUSE -B
SALE AREA- 4970 SQ.FT



TYPICAL FLOOR PLAN

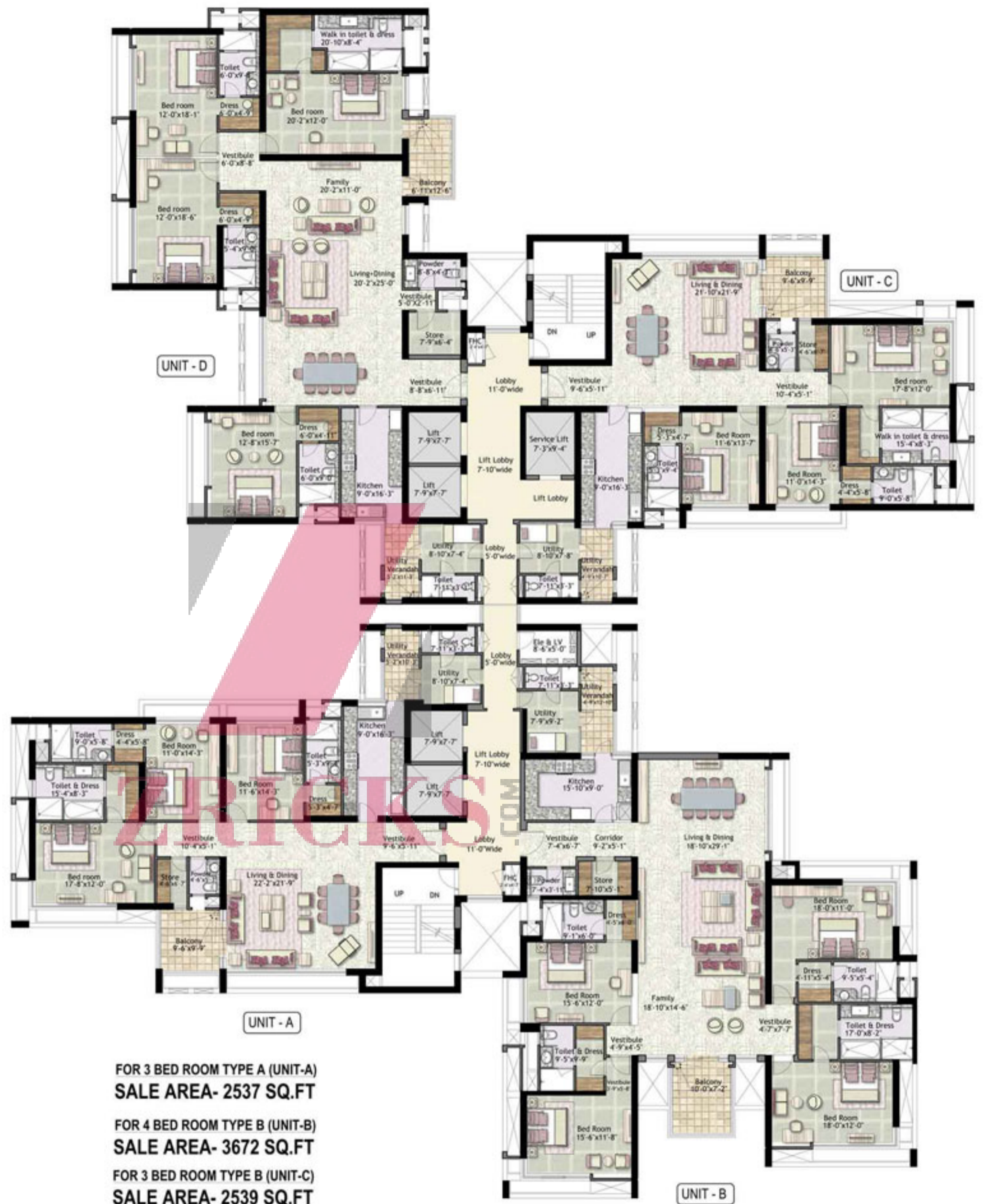
31st floor

**FOR PENT HOUSE - A
 SALE AREA- 7000 SQ.FT
 FOR PENT HOUSE -B
 SALE AREA- 4970 SQ.FT
 FOR PENT HOUSE -C
 SALE AREA- 6960SQ.FT**



- FOR 3 BED ROOM TYPE A (UNIT-A)
SALE AREA- 2537 SQ.FT
- FOR 4 BED ROOM TYPE B (UNIT-B)
SALE AREA- 3631 SQ.FT
- FOR 3 BED ROOM TYPE B (UNIT-C)
SALE AREA- 2539 SQ.FT
- FOR 4 BED ROOM TYPE A (UNIT-D)
SALE AREA- 3615 SQ.FT

TYPICAL FLOOR PLAN
SCALE 1:200



- FOR 3 BED ROOM TYPE A (UNIT-A)
SALE AREA- 2537 SQ.FT
- FOR 4 BED ROOM TYPE B (UNIT-B)
SALE AREA- 3672 SQ.FT
- FOR 3 BED ROOM TYPE B (UNIT-C)
SALE AREA- 2539 SQ.FT
- FOR 4 BED ROOM TYPE A (UNIT-D)
SALE AREA- 3615 SQ.FT

5TH,6TH,12TH,13TH,19TH,20TH,26TH & 27TH FLOOR PLAN
SCALE 1:200



ZRICKS

Product level specifications	
Structure Floor	Earthquake Resistant RCC frame structure with masonry infill
Living/ Dining/ Foyer	Marble/ Imported Tile Flooring
Bedrooms/ Study	Laminated wood flooring
Workers Room	Ceramic Tiles
Lift Lobby	Combination of selected stones
walls	
External	Combination of Stone/ Texture Paint
Internal	Acrylic Emulsion/ Texture Paint
Ceilings	Acrylic Emulsion/ Texture Paint; POP Cornice/Gypsum board painted ceilings as per design
doors / windows	
Internal	Veneered flush/ Skin molded door shutters with high quality fixing mechanisms
External	UPVC/ Anodized/ Powder coated Aluminum glazing
Woodwork	Factory manufactured, pre-assembled wardrobes in bedrooms
Bathrooms	High Quality vanity counter, fixtures and fittings Imported tiles on flooring and on walls (7' height in shower area; 3 ½' in balance areas) Vanity, Water Closet, shower area Jacuzzi in master bathroom of 3 Bedroom and 4 Bedroom apartments
Kitchen	Imported tile flooring 2' high dado in decorative tiles
Security	Door Phones & Intercom in apartment CCTV in Lobby and Basement for surveillance 24 Hour manned security on entrance gates
Landscaping	scaped common areas to preserve and enhance the natural characteristics of site
Water supply	Water supply through underground supply lines/ overhead tanks High quality modular kitchen with granite worktop and back splash
Air-conditioning	Individual split type units as per design
Ventilation	Exhaust fans provided in kitchen and bathrooms. All external doors and part of external windows are openable
Utilities and facilities	
Sewage water	Soiled water drainage into main sewer outside property
Storm drainage	Storm water drainage system integrated with rainwater harvesting
Fire protection	Fire detection/ sprinkler system as per fire safety norms
Main Electrical Supply	Electrical wiring in concealed conduits with modular switches and power back up
Telephone/ Data	Telephone cable pre-wired into all rooms Cabling for internet access as per design
Services	Maintenance for common area on chargeable basis



ZIRCKS