



THE FINAL LAP OF AFFORDABLE LIFESTYLE

shubhkamna 
SUBLIME
1/2/3 BHK Apartments
YAMUNA EXPRESSWAY

ZRICKS.COM

COME TO
THE HEART OF ACTION



Situated right on the Yamuna Expressway, Shubhkamna Sublime is a perfect fusion of master craftsmanship and contemporary comforts. The project fulfills aspirations of the masses by offering homes at most affordable and pocket friendly price. With all the amenities, services, facilities in close vicinity life at Sublime will be a complete one. Living at Sublime will be a lifetime experience that will elate your family into a world of happiness and well being.



Excellent Track Record
Connoisseurs of Construction
Thousands of Happy Families
A Vision for Future

COMPLETED PROJECTS



Kartik Kunj, Plot No. D-13, Sector-44, Noida



Vigyan Vihar, Plot No. GH-19, Sector-56, Gurgaon



Jagdamba Apartments, Plot No. C-58/25, Sector-62, Noida



Shubhkamna Apartments, Plot No. F-31, Sector-50, Noida

ONGOING PROJECTS



ZRICKS .COM

Superior Quality, attention to minutest of details, quest for perfection, modern amenities and a comfortable lifestyle - what more could you ask for? This and more is offered by the Shubhkamna - Advert Group, one of the fastest growing real estate developers in the country. Having spread its footprints in Delhi NCR the company has delivered 4 projects and is currently executing 10 more projects across three states. The group is focused on developing world-class residential and commercial properties all over the country.

AESTHETICALLY CRAFTED HOMES WITH COZY INTERIORS



At Shubhkamna Advert homes are crafted with highest standards of architecture and engineering, so that you can relish the astounding experience for a lifetime. Designed aesthetically homes at Sublime are well ventilated with ample space and meet all the standards of good vastu.



FINISHES

- Internal wall painted with pleasing shades of Plastic-Emulsion.
- Permanent weather coated heat reflective texture paint or equivalent on external walls.
- Glazed/Ceramic tiles upto 7 ft. height, wash basin, EWC, towel rail and other accessories in toilets.
- Pre-polished granite platform with stainless steel sink, dado up to 2'-0" height above platform in ceramic glazed tiles.

FLOORING

- Designer floor tiles in drawing & dining area.
- Vitrified tiles in bed rooms.
- Anti-skid ceramic tiles in kitchen and toilets.
- Ceramic tiles in balconies.
- Marble/Kota stone in corridors, staircase and lobbies.

STRUCTURE

- Earthquake resistant R.C.C. framed structure in accordance with norms.

DOORS AND WINDOWS

- Wooden door frames. Main door of panelled Ghana or equivalent teak with brass/SS fittings.
- Prelaminated flush doors/skin moulded shutters.
- All external doors and windows of powder-coated aluminium.

ELECTRICAL

- Modular switches and sockets.
- Copper wiring, optical fiber cable.
- Light and fans in every room.
- Provision for A.C. in every room.

FIRE FIGHTING

- Fire Fighting arrangements as per norms.

EXPERIENCE THE JOY OF PEPPY COMFORTS



Sublime offers contemporary and sophisticated facilities that signify ultra modern and comfortable lifestyle. Loaded with unparalleled features, living at Sublime will keep you fit and rejuvenated. The mesmerizing ambience here will ensure that the time you spend with your family and friends will turn into experiential delight.

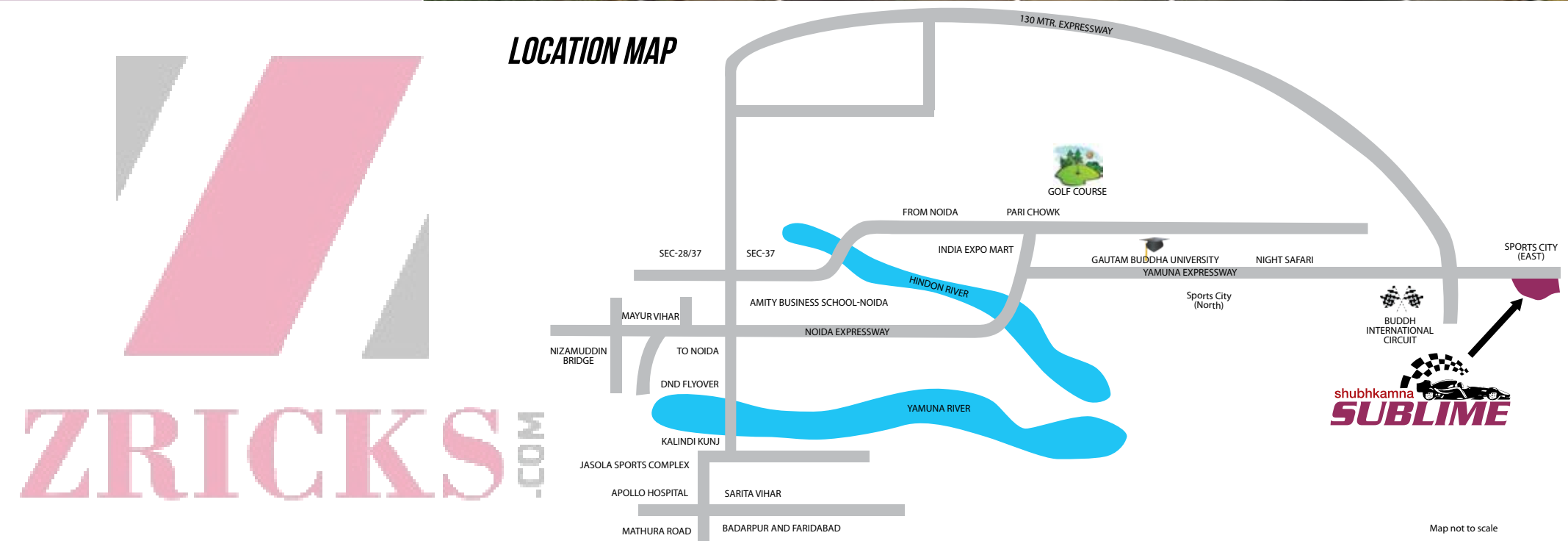


- Club House with Gymnasium
- Banquet/ Party Hall
- Skating Rink
- Jogging Track
- Swimming Pool
- Badminton Court
- Indoor Table Tennis
- Designated Play area for children
- Undulating Landscaped Area
- Super market for daily needs
- 24 hrs. security with intercom

**ADDRESS THAT WILL
BECOME A MILESTONE**



Your home is a place you cherish for a lifetime. At Shubhkamna Advert, we select project locations keeping in mind all the basic necessities of life. Sublime truly symbolizes this principle. Prominently located right on the Yamuna Expressway, Sublime will not keep you far away from the best of everything.



ZRICKS.COM



- Right on the Yamuna Expressway
- Close to Formula 1 circuit
- Next to proposed Night Safari
- On the way to Proposed Aviation hub
- Schools, Colleges, Hospitals & Shopping Centers nearby
- Near IT Hub, operational NIIT campus.
- Near proposed international cricket stadium
- Easy and seamless connectivity from Delhi

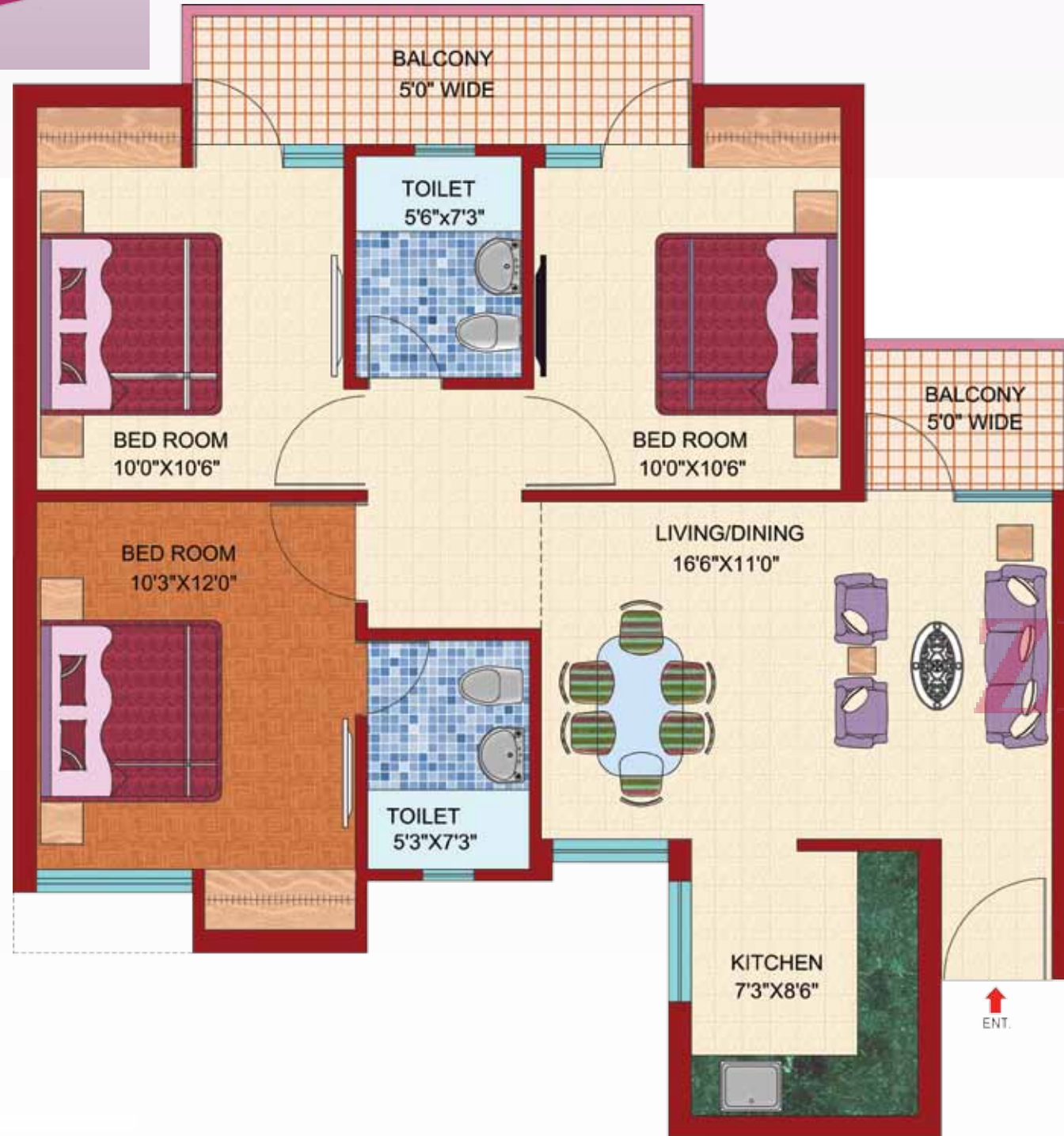
TYPE-A
1 BHK + 2 TOILET
SUPER AREA : 625 SQ. FT.



TYPE-B
2 BHK + 2 TOILET
SUPER AREA : 895 SQ. FT.



TYPE-C 3 BHK + 2 TOILET
SUPER AREA : 1195 SQ. FT.



TYPE-D 3 BED + 3 TOILET + STUDY
(WITH TOILET)
SUPER AREA : 1690 SQ. FT.



TYPE-E 4 BED + 4 TOILET +
DRESS + STUDY
SUPER AREA : 2250 SQ. FT.



MASTER PLAN



TRICKS MOD-

- TYPE-A
- TYPE-B
- TYPE-C
- TYPE-D
- TYPE-E



Shubhkamna Advert Group

A-102, 1st Floor, Star House, Sector-4, Noida-201301
Ph.: +91-120-4531111 • Fax: +91-120-4531100
info@shubhkamnaadvert.com • www.shubhkamnaadvert.com

Toll Free No.: 1800-200-1415

ZRICKS.COM

© 2012, All rights reserved. Images, content, layout or design may not be reproduced in any manner or media without the specific written permission of SHUBHKAMNA-ADVERT GROUP
Disclaimer : While every attempt has been made to ensure the accuracy of the plans shown, all measurements, positioning, fixtures, fittings and any other data shown are an approximate interpretation for illustrative purposes only and are not to scale. No responsibility is taken for any error, omission, miss-statement or use of data shown. The company reserves the right to make changes in the plans, specifications, dimensions and elevations without any prior notice. 1 sq. ft. = 0.0929 sq. mt., 1 sq. mt. = 10.764 sq. ft, 1 ft. = 0.305 mt and 1 mt = 3.281 ft.

© 2012, All rights reserved. Images, content, layout or design may not be reproduced in any manner or media without the specific written permission of SHUBHKAMNA-ADVERT GROUP