



LUXURIOUS LIVING
casal
royale

ZRICKS



**casal
royale**

Where Luxury & Affordability
Come Together!

ZRICKS.COM

Earthcon Universal brings NCR's most affordable set of Apartments in GH-10 Sector – 1, Greater Noida. CASA ROYALE is Earthcon's Universal dream project with compilation of 2, 3, 4 Bedroom Apartments and Penthouses !

Earthcon Universal is the most reliable name in NCR and has been fast growing since its inception. Earthcon has a great history of successful projects all over India and it has achieved a phenomenal growth over the years.



THE ROYALE HIGHLIGHTS

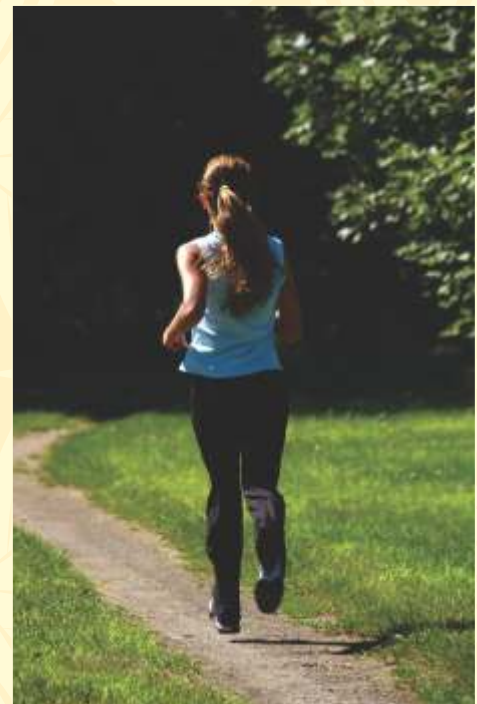
- Casa Royale overlooks 130 Acres of Recreational Greens.
- Outstanding Architecture and Distinct Distribution of Greens.
- Eco-friendly features with Solar Powered Street Lighting.
- Provision for Rain Water Harvesting & Waste Water Recycling
- Ample Parking Space and Dedicated Visitors' Parking.



CHOOSE THE BEST LIFESTYLE !

ZRICKS.COM

- 20,000. Sq. ft Indoor Club:-
SPA, Gym, Reading Room, Coffee Shop & Bakery Lounge, Banquet, Billiard Room, Juice Bar, Business Lounge, TV Lounge, Terrace Party Area.
- 50,000 Sq. ft Outdoor Area:-
Tennis Court, Basketball Court, Kids Play Area, Kids's Pool, Party Lawns, Barbeque Joints, Semi- Covered Gazebos.
- Creche And Play School (for 100 Kids with Play Area and Activity Rooms)
- Swimming Pool
- Primary Health Care
- Convenient Shopping Centre



SWITCH TO SUPERIOR SERVICES



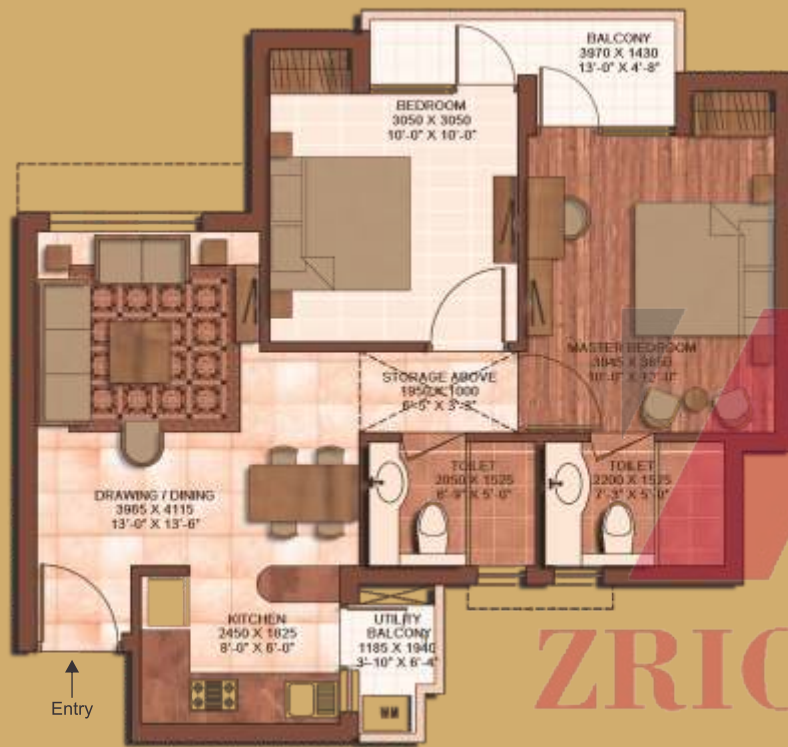
ZRICKS

- A Green Building Project
- Spread over 16.26 Acres of Land
- 78% Open Green Area
- Theme-based Landscaping with Lawns
- OAT (Open Air Theatre) / Rangmanch
- Refreshing Water Bodies and Fountains
- Landscaped Sunken Courts
- Pergola, Acupressure Walking Tracks, Yoga / Meditation Lawn
- Grand Entrance Lobby in each Tower
- Sky-view Gallery in 4 bedroom units
- Penthouses with independent Terrace Gardens
- Utility Balcony in every unit
- 24x7 Two level Security
- Wi-Fi Enabled Complex
- Piped Gas facility in every apartment.

FLOOR PLANS

Type: 2BHK, Area: 875 Sq. ft.

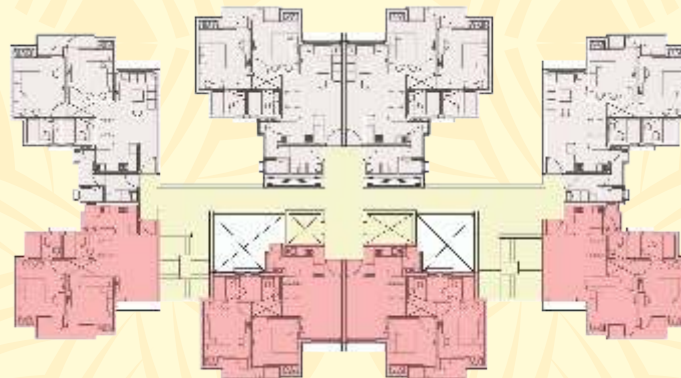
Type: 2BHK + Servant, Area: 1090 Sq. ft.



ZRICKS.COM

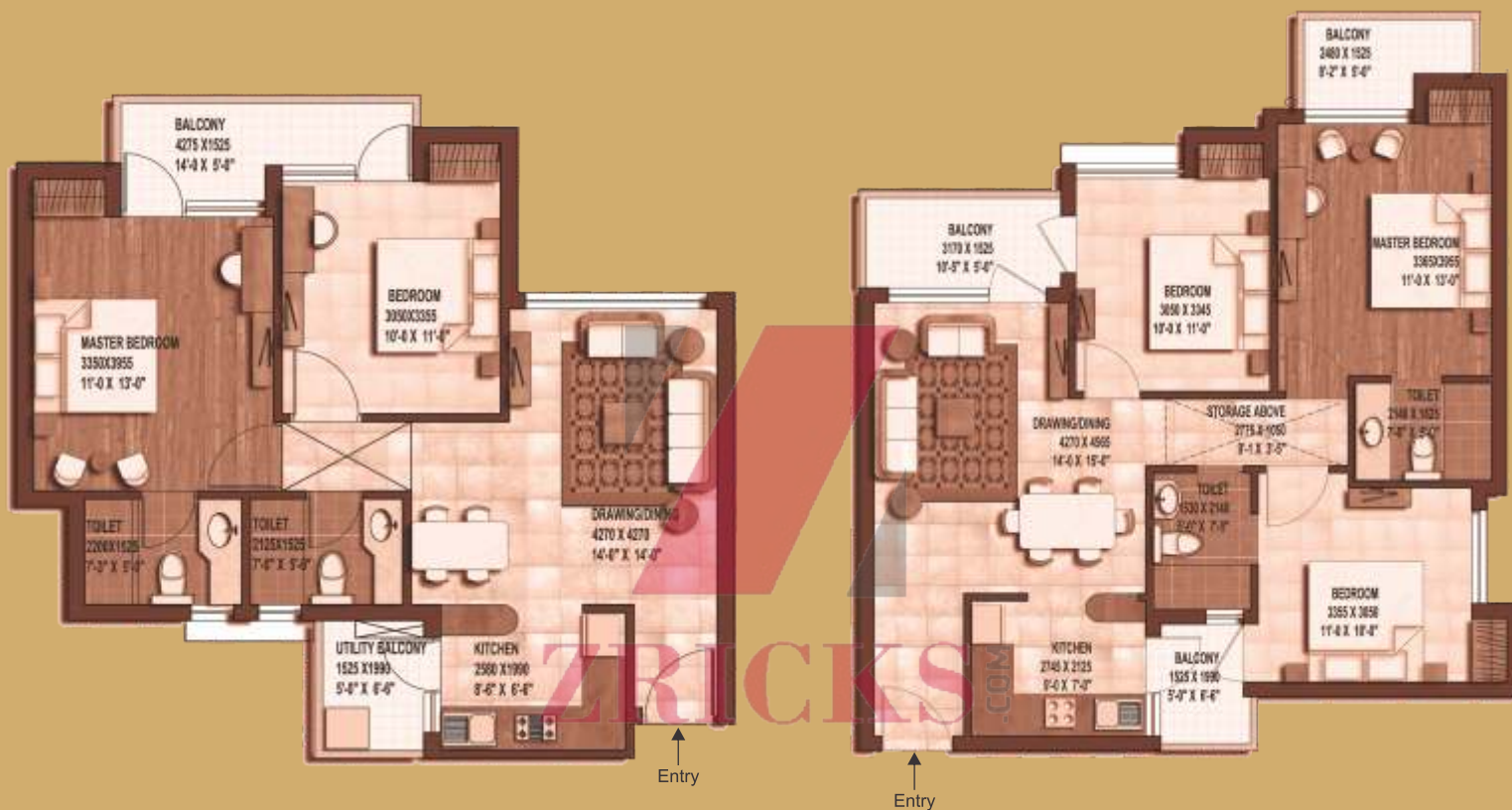
Cluster Plan

- 2BHK + Servant
- 2BHK



Type: 2BHK, Area: 995 Sq. ft.

Type: 3BHK + 2T, Area: 1285 Sq. ft.



Cluster Plan



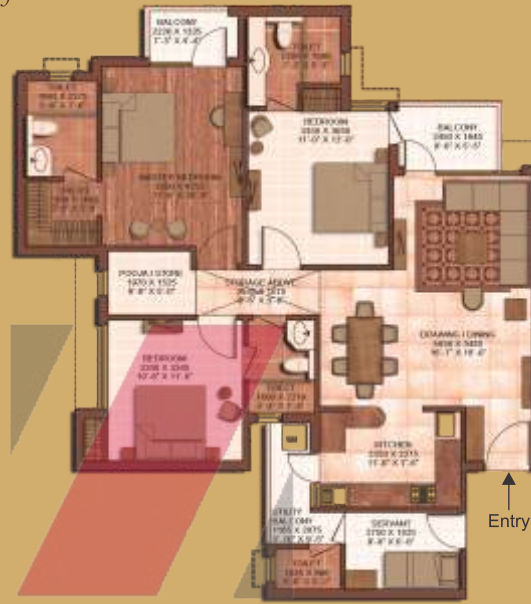
- 2BHK, 995 Sq. ft.
- 3BHK + 2T, 1285 Sq. ft.



FLOOR PLANS

Cluster Plan

Type: 3BHK + Servant + 3T, Area: 1485 Sq. ft.

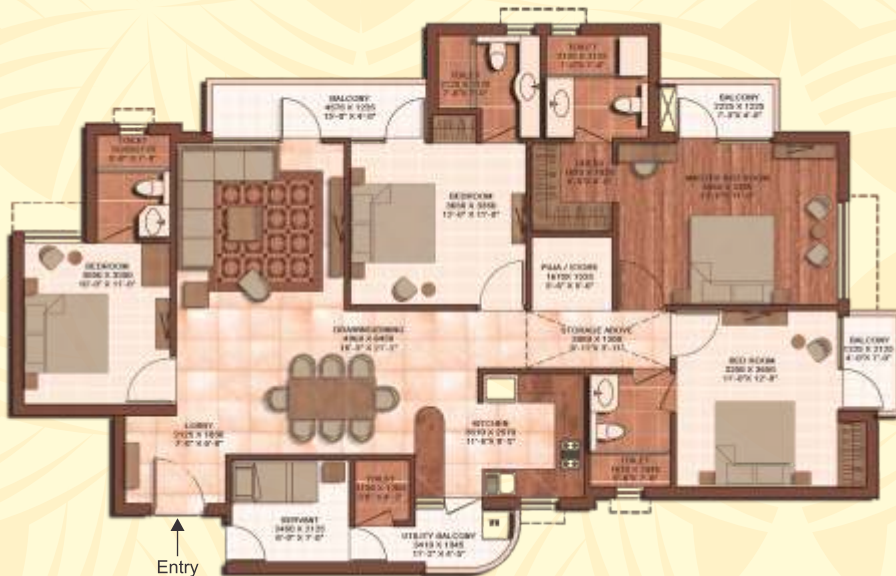


- 3BHK + Servant + 3T
- 3BHK + Servant + 4T + Store

Type: 3BHK + Servant + 4T + Store, Area: 1690 Sq. ft.

Type: 4BHK + 5T, Area: 2145 Sq. ft.

ZRICKS.COM



4BHK + 5T, 2145 Sq. ft.

SITE PLAN



- 4 BHK+5T
- 3BHK+4T
- 3BHK+3T
- 2BHK+Servant
- 2BHK
- 3BHK+3T (1285 Sq. ft.)
- 2BHK (995 Sq. ft.)

1. Meditation With Aroma Garden
2. Creche, Play School & Primary Health Care
3. Convenient Shopping Centre
4. Kids Play Area
5. Guard Room
6. Skylight
7. Tree Court
8. Accupressure Walkway
9. Fountain



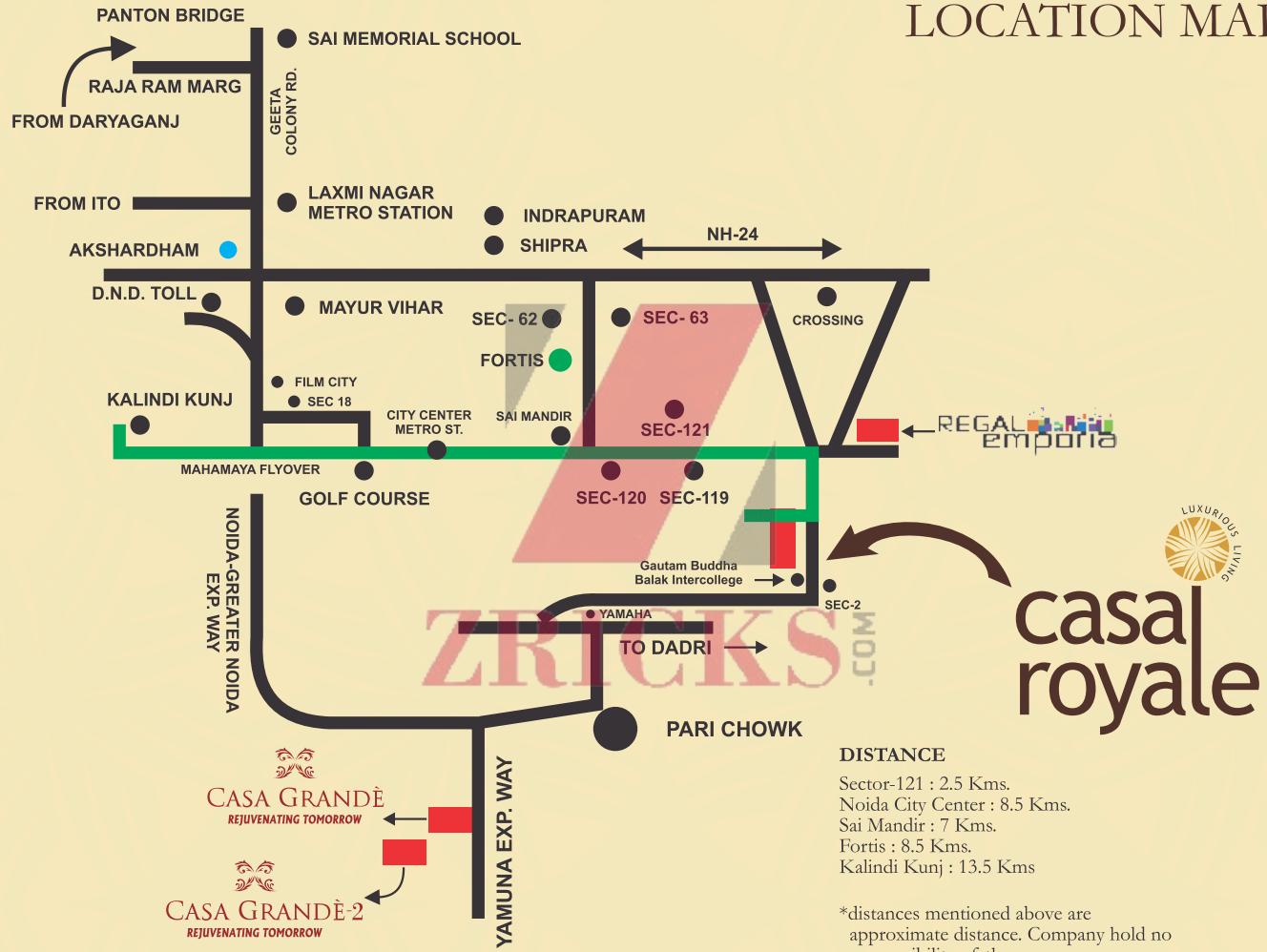


THE PERFECT SPECIFICATIONS

ZRICKS.COM

- | | | | |
|------------------|---|----------------------|--|
| Structure | - Earthquake Resistant RCC Frame Structure as per Seismic zone-5. | Doors | - All Door frames in Marandi wood with skin moulded flush doors & window frames and shutters in Aluminium. |
| Flooring | - Wooden Flooring in Master Bedroom/Vitrified Tiles in other Bedroom/drawing/dining/all stairs and corridors with marble/kota stone flooring. | Painting | - Oil Bound Distemper in entire flat. |
| Tiles | - Anti-Skid Tiles in Bathroom & Balconies. | POP | - POP Punning & Cornices in entire flat. |
| Exterior | - Permanent finish/texture paint. | Electrical | - Electrical (Copper) Wiring as per ISI code with modular switches. Circuits with MCBs of approved make Tv and Telephone points in every room. |
| kitchen | - Slabs are well-finished granite stone with Stainless Steel sink and drain board. Glazed Tiles Dado on wall upto 2 ft. over counter. | Security | - Round-the-clock security system. |
| Bathroom | - Equipped with Parryware/Hindware/Cera or Equivalent, Wash basins and WCS. Chrome plated tap fitting of Marc, Cera or Equivalent. | Power Back up | - 2KVA – 2BHK / 3KVA – 3BHK / 4KVA – 4BHK. |

LOCATION MAP



casal royale

CASA GRANDÈ
REJUVENATING TOMORROW

CASA GRANDÈ-2
REJUVENATING TOMORROW

ZRICKS.COM

EARTHCON
concerned living

 **Universal Contractors
& Engineers Pvt. Ltd.**

Site address:

Plot No. GH-10, Sector-1, Greater Noida

Corporate office:

J-25A, Sector-18, Near Centre Stage Mall, Noida 201 301, U.P.
P: 012-4773400-24, F: 0120-4206778 | website: www.earthcon.co.in

ZRICKS.COM