



ANGEL

MEERICKSURY

INDIRAPURAM

No Dust, No Noise, No Pollution

ONLY BLISS...

Embrace a mesmeric lifestyle that subsists in luxurious and splendid homes in a pollution-free milieu.

2,3 & 4 Bedroom
Apartments in
INDIRAPURAM

Independent, Innovative & Inspiring - that's Mercury! Its a project that displays homes - exclusively crafted for families & individuals who value living as a precious experience and treasure memories of loving moments.

This glorious endose illuminates and encases itself in superb facilities and services extending from environment to amenities to conveniences to every conceivable requirement.

A Trust of Life

Angel Mercury - is the beginning of a long term relationship, based on your trust and our commitment. We at Angel Promoters value this relationship and strive to provide the best of amenities and infrastructure.

Maximum Green Area



Swimming Pool
Club House



Proposed Metro Station
at Walking Distance



TRUCKS .COM

The Project

Resounding with serenity & sophistication, **Angel Mercury** is an array of amazing abodes. Not just a residential complex, Angel Mercury has an aura of delightful freshness. Innovatively designed with aesthetics and eco friendly features, the wondrous apartments complement all family needs.

The apartments are significantly surrounded by swinging greens, carpeted pathways & free flowing area for movement. Elegant exterior and inviting interiors symbolise the spaciousness and clutter-free openness.



Great homes,
lovely interiors
and enticing
exteriors are all
going to be
here... forever



The Interior

The appealing apartments at Angel Mercury would mesmerise the future residents. As a luxury to indulge in each apartment holds the promise of the warmth of a HOME!

The ultra premium apartments are well laid out with maximum utilization of space. A symphonic mix of grace and elegance, nature's naturalness floods each home at dawn & dusk bestowing tranquility and harmony.



The interiors are custom suited to the requirements of urban lifestyle. Glowing with natural light, decorous rooms charge up with positivity of vaastu. Functionality, optimum utilisation of space and privacy ensure a sense of satisfactory living.

- Vaastu & Eco friendly layout
- Water harvesting system
- Large balconies
- Spacious lift lobby
- Maximum Green Area
- 24 hrs water supply
- 24x7 security
- Earthquake resistant RCC frame structure certified by IIT
- 100% power back-up for essential services

Amenities

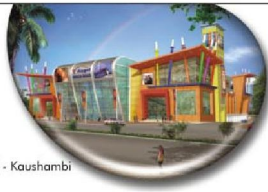
Mercury enjoys a host of amenities by virtue of its strategic location. With ease of connectivity, the location has witnessed rapid pace of development.

Reputed educational institutes, hospitals, commercial districts and shopping



Soar spirits, boost energy & indulge endlessly.....that is the message of the Mercury Club. The hub of excitement races ahead to refresh & rejuvenate. The clubhouse equipped with gymnasium would undoubtedly prove to be a source of constant freshness. A storehouse of facilities - Mercury Club enlivens each moment with enthusiasm.

Health club with swimming pool, sand pit for kids, community hall and a temple are all envisaged within the complex.



Angel Mega Mall - Kaushambi



Angel Prime Mall - Panipat



Rishabh Paradise - Indirapuram



Rishabh Platinum - Indirapuram

The Group

Angel Promoters Pvt. Ltd. is today one of the leading infrastructure developers, well recognised for its commitment towards quality & timely completion of its projects. The successful completion of Angel Prime Mall - Panipat, Angel Mega Mall - Kaushambi, Rishabh Platinum - Indirapuram and Rishabh Paradise - Indirapuram are the landmarks of our dedication and devotion.

Great potential and expertise shines brilliantly through the ideologies of the group that stand tall and strong amongst all its contemporaries.

Located next to DPS just off NH-24

Ultra modern shopping and entertainment hubs in close proximity

Well connected from ISBT Anand Vihar and Rly. Station Anand Vihar

Metro connectivity proposed

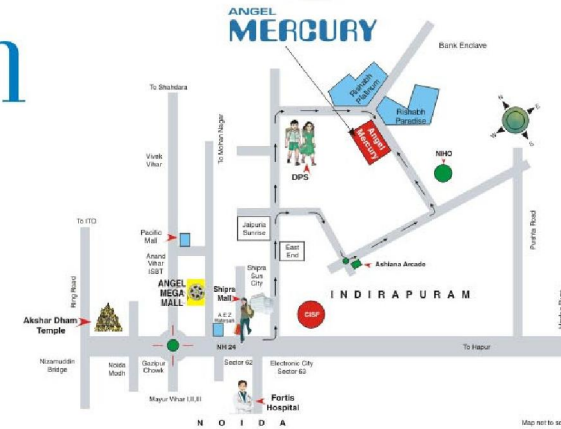


Location

Indirapuram has witnessed frenetic pace of development due to its prime location. The location is easily accessible from Delhi, Noida and Sahibabad, making it a preferred residential destination.

Poised as the most potential and upcoming residential area, Indirapuram is on the verge of major real estate boom. The residential hub pulsates with malls, residential complexes, educational institutes etc., All in varying degrees of development.

Life at Indirapuram is thus a lucrative offer of a contemporary lifestyle within the hub of business happenings





Cluster Plan



Layout Plan



TRICKS

INTERNAL FEATURS OF ANGEL MERCURY



SWIMMING POOL



CLUB & GYM



GARDEN



SAND PIT FOR KIDS



DOUBLE BASEMENT CARPARKING



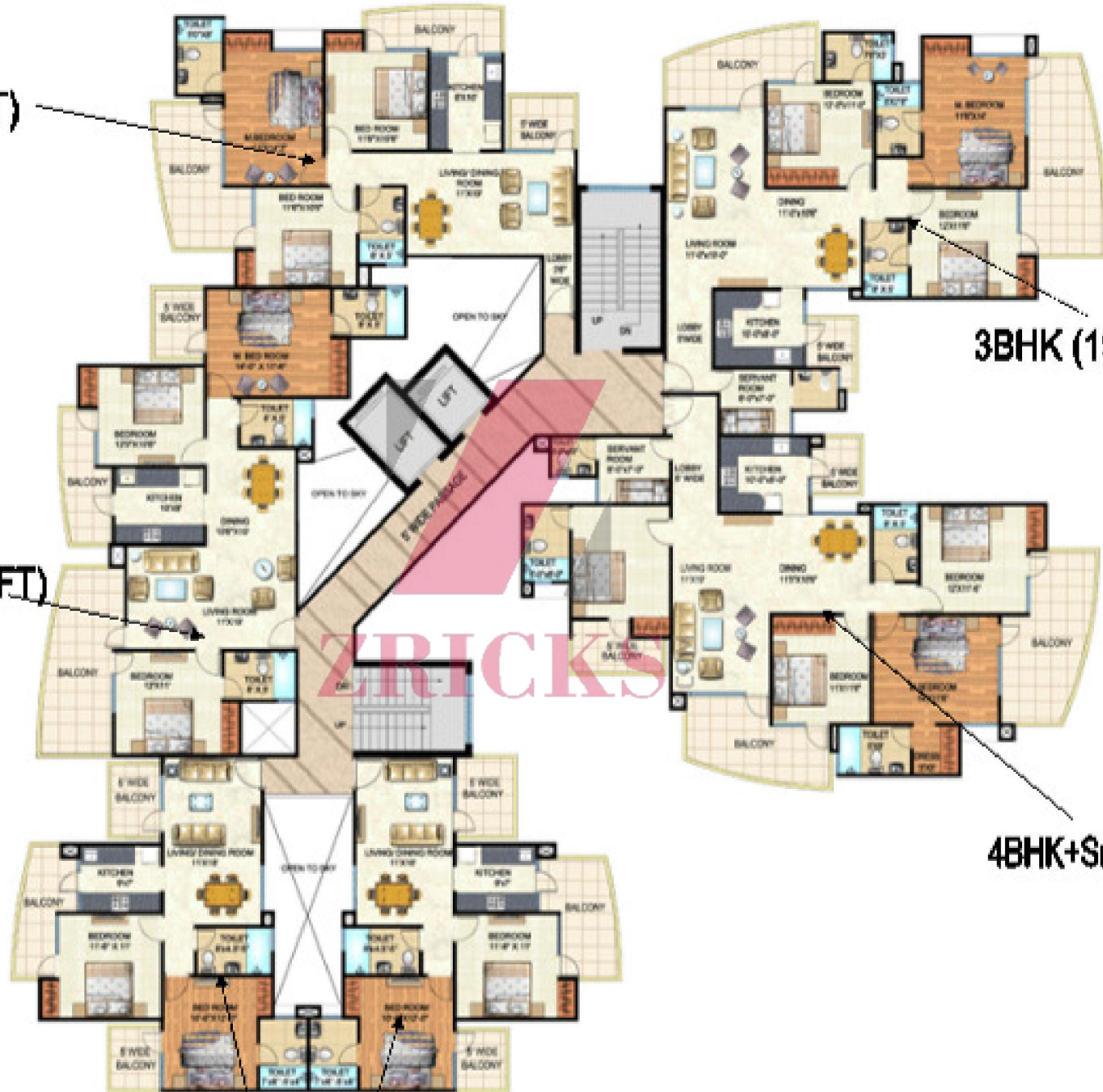
OPEN AMPHITHEATRE

3BHK (1575 SQ.FT)

3BHK (1979 SQ.FT)

3BHK (1872 SQ.FT)

4BHK+Sr (2298 SQ.FT)



2BHK(1195 SQ. FT.)



3BHK(1575 SQ.FT)

2BHK(1195 SQ. FT.)

3BHK(1776 SQ.FT)

**CLUSTER PLAN
TOWER - B**

2 BHK (1195 SQ. FT)



3BHK (1575 SQ.FT)

ZRICKS

4 Bedroom

+3 Toilets + Servant Room
Super Area : 2298 Sq.ft.
TOWER - A



3 Bedroom

+3 Toilets + Servant Room
Super Area : 1979 Sq.ft.
TOWER - A





3 Bedroom

+3 Toilets
Super Area : 1872 Sq.ft.
TOWER - A



3 Bedroom

+3 Toilets
Super Area : 1776 Sq.ft.
TOWER - B



TRICKS



Specifications

STRUCTURE

Earthquake-resistant RCC frame structure with brick filler walls as per ISI codes.

EXTERIOR

Textured Paint finishes as per architectural drawings.

WALL FINISH

DD & BEDROOMS - Painted in beautiful shades and POP cornices.
EXTERNAL - Long lasting paint.

FLOORING

MASTER BEDROOM - Wooden Flooring

VITRIFIED TILES - All other Bedrooms, Living / Dining, Kitchen

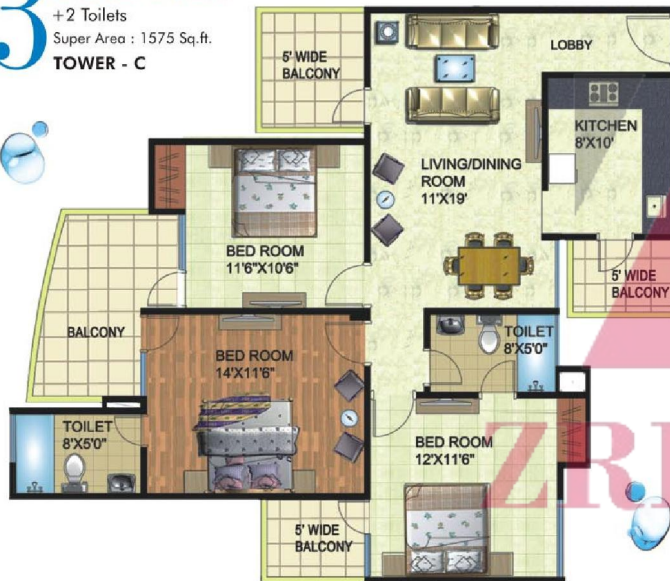
BATHROOMS / TOILETS - Anti skid tiles.

BALCONIES & TERRACES - Ceramic tiles.

STAIRCASE - Marble stone / Kota stone, Step and riser with MS railing and wooden hand rail.

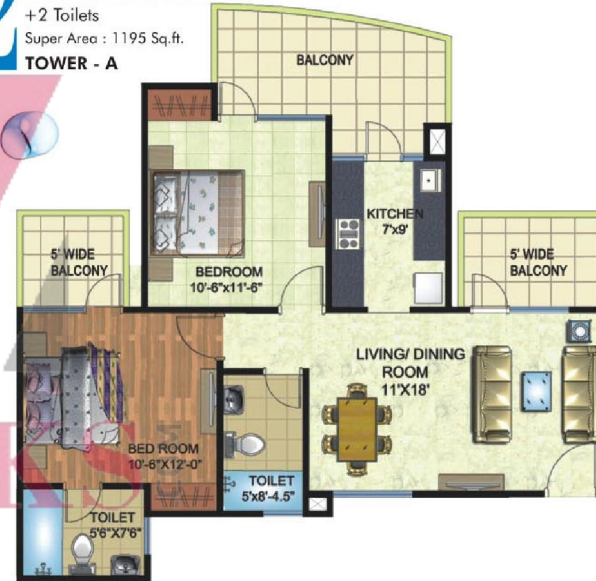
3 Bedroom

+2 Toilets
Super Area : 1575 Sq.ft.
TOWER - C



2 Bedroom

+2 Toilets
Super Area : 1195 Sq.ft.
TOWER - A



KITCHEN

COUNTER - Finished Granite counter.

SINK - Stainless steel sink and CP fittings.

WALL TILES - Ceramic tiles on walls above the counter.

BATHROOMS

WALLS - Ceramic tiles.

FITTINGS - Wash basin, EWC, Provision for Hot and cold water system.

MIRROR - Mirror above the wash basin.

TAP FITTINGS - Branded CP fittings.

DOORS AND WINDOWS

DOORS - Flush Doors duly painted with complete fittings along with wooden frames.

WINDOWS - Windows panes with glazed aluminium / powder coated / durable wood.

ELECTRICALS

Complete electrical concealed wiring with branded plug points, sockets, switches and MCBs. TV / Telephone points and fan fitting in each room.

Note : Visual representations shown in this brochure are purely conceptual. All Building Plans, Specifications, Layout Plans etc. are tentative and subject to variation & modification by the company or the competent authorities sanctioning plans. Detail names appearing in the brochure are for artwork purposes only.