

55% HIGHER RENTALS.  
59% HIGHER PROPERTY VALUE.  
1,50,000 CAPACITY STADIUM.  
LOCATED IN INDIA'S ONLY WORLD CITY.

Ensuring multiplied returns and increased rentals for investors, an exclusive, higher way of life for residents, and a greener eco-system for neighboring residents and establishments, every little and big factor has been carefully re-considered and re-crafted to bring you a living experience that's truly the best of all worlds. Be it investment of life, you will find everything to be far above the ordinary.





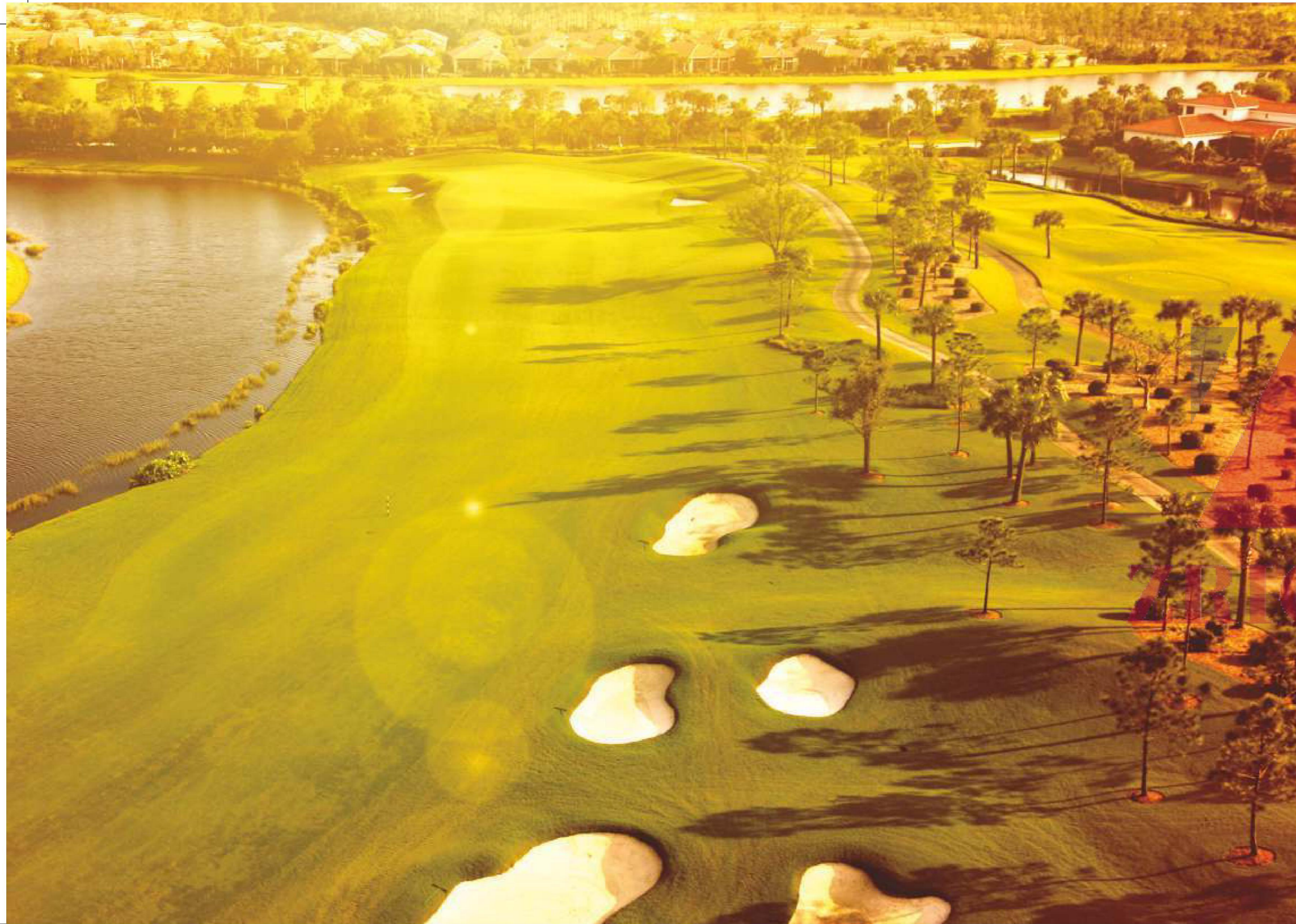
# YOUR NEW HOME AT SPORTS CITY, YAMUNA EXPRESSWAY

Welcome to a lifestyle where adrenalin rush comes as a standard feature. Beetle Lap, an exhilarating residential destination that blends luxury and excitement like nothing else. Take a lap of the high-life as you get up-close with an avant-garde design ethos along with treating yourself to the best of amenities in the most unruffled environment any modern day destination offers. Live in the fast lane with Beetle Lap.

ZRICKS.COM







# A SPORTS LOVERS' PARADISE

Everything about Beetle Lap is exciting, and it starts with the address. Located on the sidelines of F1 track of the Buddh international circuit, Beetle Lap offers you much more than a heart-throbbing atmosphere right next to India's most advanced highway, the Yamuna expressway. Add to this, an International cricket stadium, an international hockey stadium and a breathtaking golf course situated in close proximity and you have the most sought-after address of Delhi-NCR.

CKS.COM





YOU ARE ALWAYS IN THE LEAD



ZRICKS





# LAKES, LANDSCAPES AND UNENDING SERENITY

Let tranquility rejuvenate your mind, body and soul at Beetle Lap. With breathtaking landscapes, open green spaces and stunning water bodies to trigger your senses, design aesthetics of Beetle Lap make sure you live a blissful life that's awe-inspiring and as serene as it possibly be. 'Energy Efficient' (with proposed IGBC Green Home Gold Ratings), these homes let you explore and celebrate a special bond with nature.

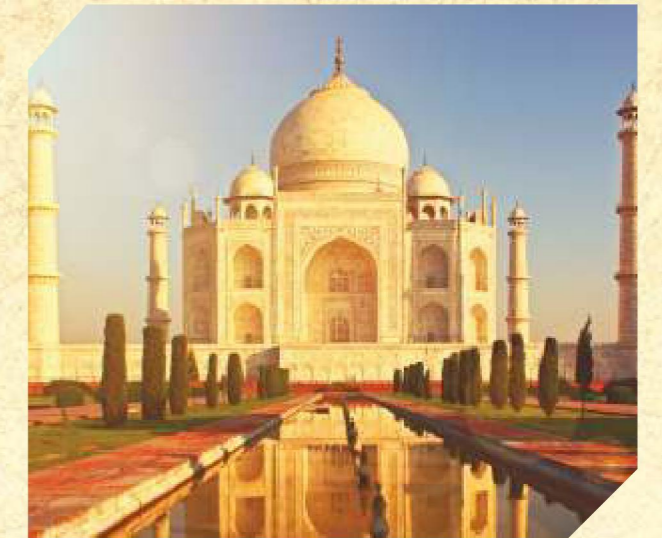






## NIGHT SAFARI & OTHER GETAWAYS ARE JUST MINUTES AWAY

Located at a perfect distance to make both Delhi and Agra easily accessible by road. There are innumerable local attractions like the Night Safari coming up in the vicinity to keep your kids entertained and destinations like the Taj Mahal to keep the romantic in you going.







## A MODERN DESTINATION IN NCR: YAMUNA EXPRESSWAY

Beetle lap promises a lifestyle that's way ahead of its time. A lifestyle that boasts of a location where the future lies in the Yamuna Expressway- an archetype of modern living, India's most advanced highway that's dotted with commercial hubs, schools and malls along with everything else that a contemporary lifestyle demands. Even getaways like the upcoming night safari are only a few minutes away and the Taj Mahal only two hours from your new home.







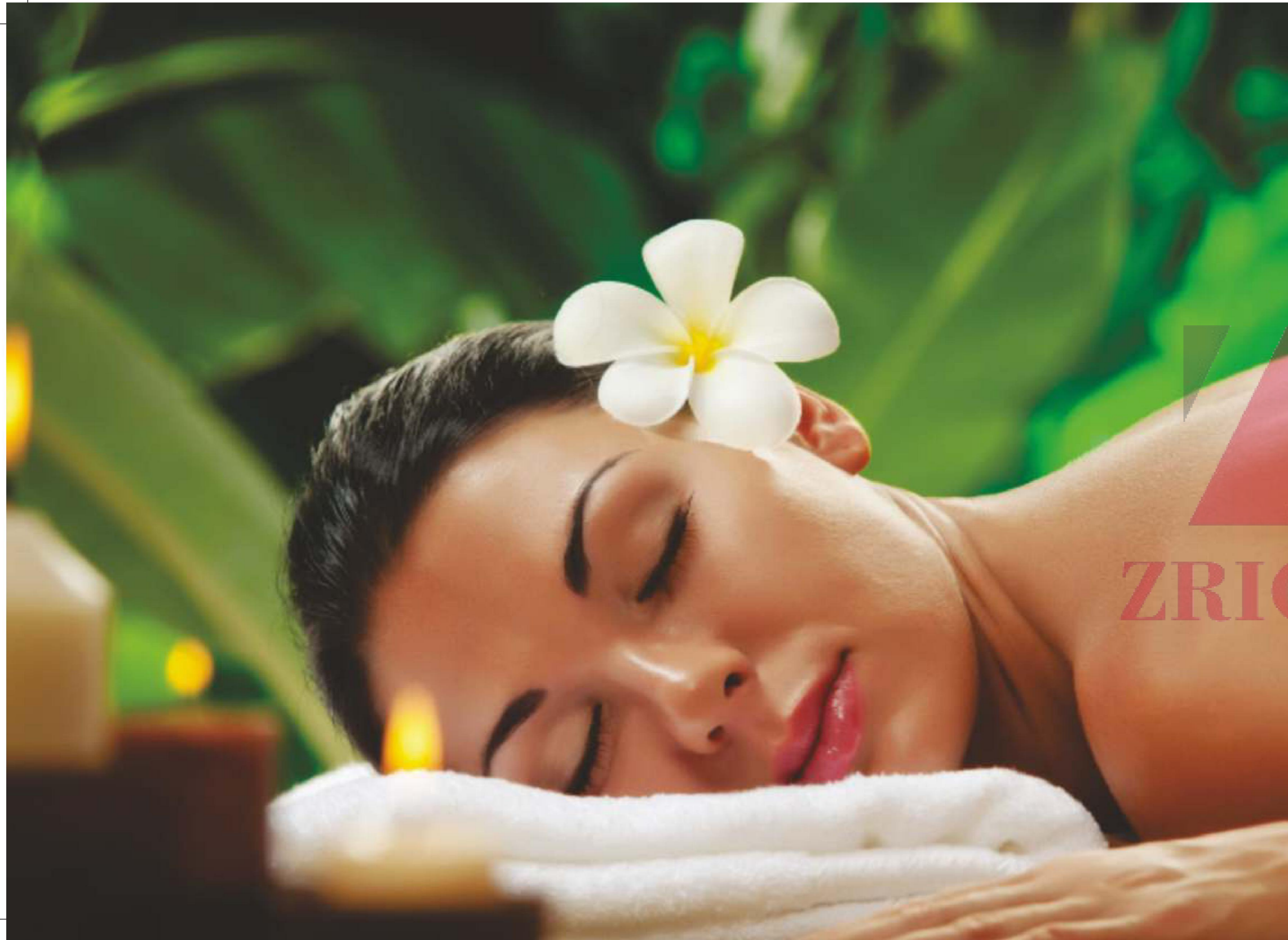
ZRICKS.COM

## CONTEMPORARY DESIGNS, UNMATCHED APPEAL

Beetle lap is not just about living an exciting life, but a life that transcends you to a world of ultimate opulence. Well appointed spacious apartments and modern day features make sure your luxury portfolio is unmatched. Designed to evoke a feeling of retreat from the everyday, the ultra-luxuriant living spaces ensure luxury pampers you, 24x7.







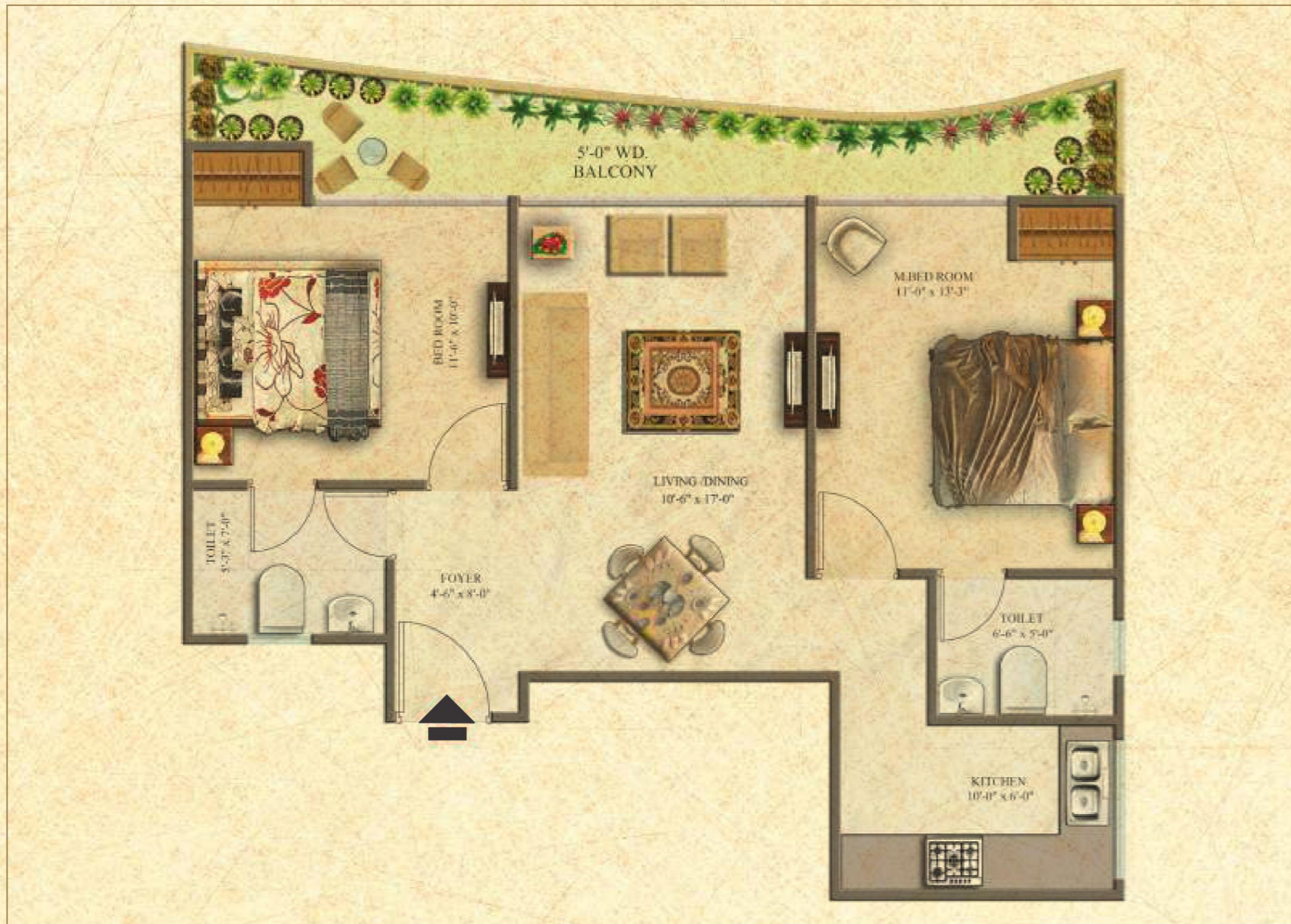
## LIFE NEVER STOPS - WORLD CLASS AMENITIES TO KEEP YOU GOING 24x7

Beetle Lap offers everything a modern lifestyle demands. With shopping malls, grocery stores, mini markets, spas, jogging tracks, specialty restaurants and fitness clubs in close vicinity, you are just a turn away from everything. Nestled in the center of a suburban neighborhood, anything you need or desire can be reached even before the blink of the eye. And to top it all off, Beetle Lap offers you top of the line security that keeps the life of your dreams uninterrupted.

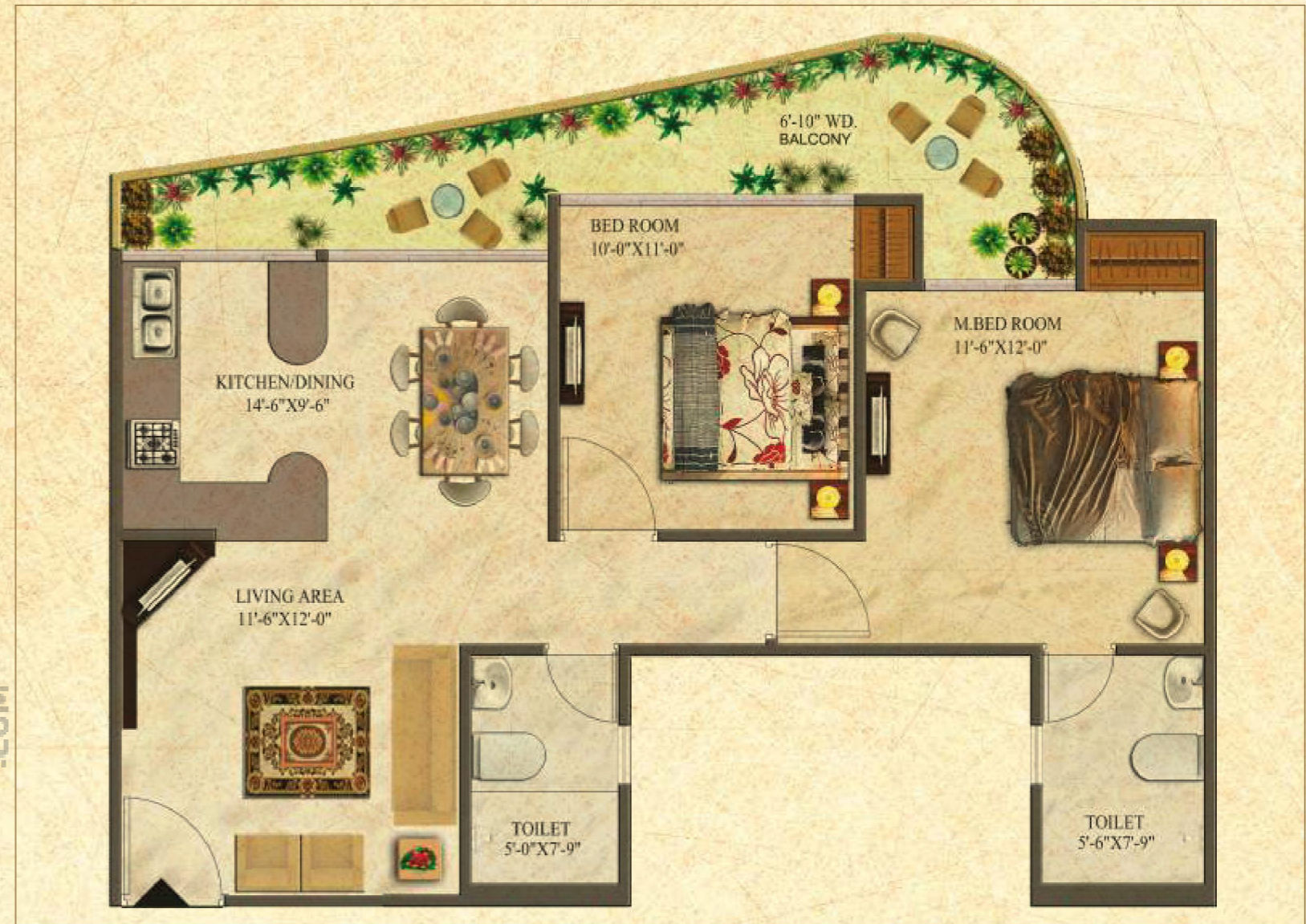
ZRICKS.COM







UNIT- TYPE D	AREA (SQ.FT.)
2 BED + 2 TOI.	Super Area-1060



UNIT- TYPE B	AREA (SQ.FT.)
2 Bed + 2 TOI	Super Area-1150





UNIT- TYPE C	AREA (SQ.FT.)
2 Bed + 2 TOI + Study Room	Super Area-1295



UNIT- TYPE A	AREA (SQ.FT.)
3 Bed + 3 TOI	Super Area-1635