

Cosmic Group introduces a
spectacular project that is
set to become a landmark
of
North India

A place not just designed
around work.
But the work-life balance..

ZRICKS.COM

Practice your game at the 3
hole golf course.



Take a relaxing dip or a sunbath at the poolside.



Keep your taste buds busy with
7 theme restaurants.



Shop till your drop in a world class shopping facility.





ZRICKS.COM

Dance the night away at the
nightclub.



And, of course, Work!



In addition to the fun-
Cruise, office space is
complete with the most
modern amenities for
today's high flying
executive.

Shared conference rooms for
business meetings.



Convertible workstations for
your power nap.



ZRICKS.COM

24/7 room service with an on-call butler.



ZRICKS.COM

Pick up and drop facility from
the nearest metro station.



A stylized logo consisting of a large, slanted 'Z' shape. The left vertical bar is grey, the top horizontal bar is pink, and the right vertical bar is grey. The text 'Add to this...' is centered over the logo.

Add to this...

ZRICKS.COM



An exquisite set of villas
to boast your status.

A stylized logo consisting of a large, slanted 'Z' shape. The left vertical bar of the 'Z' is grey, the middle diagonal bar is pink, and the right vertical bar is grey. The text 'And ...' is overlaid on the pink bar.

And ...

ZRICKS.COM



50 Independent IT office plots ...



ZRICKS.COM



All Sold out !!!!

A stylized logo for ZRICKS, featuring a large, bold letter 'Z' in a light pink color. The 'Z' is composed of three parallel diagonal lines. To the left of the top bar of the 'Z' is a small grey triangle pointing downwards. To the right of the bottom bar of the 'Z' is a small grey triangle pointing upwards.

And ...

ZRICKS.COM



**Snazzy n compact
studio apartments !!**

ZRICKS.COM



And finally the pride of
COSMIC

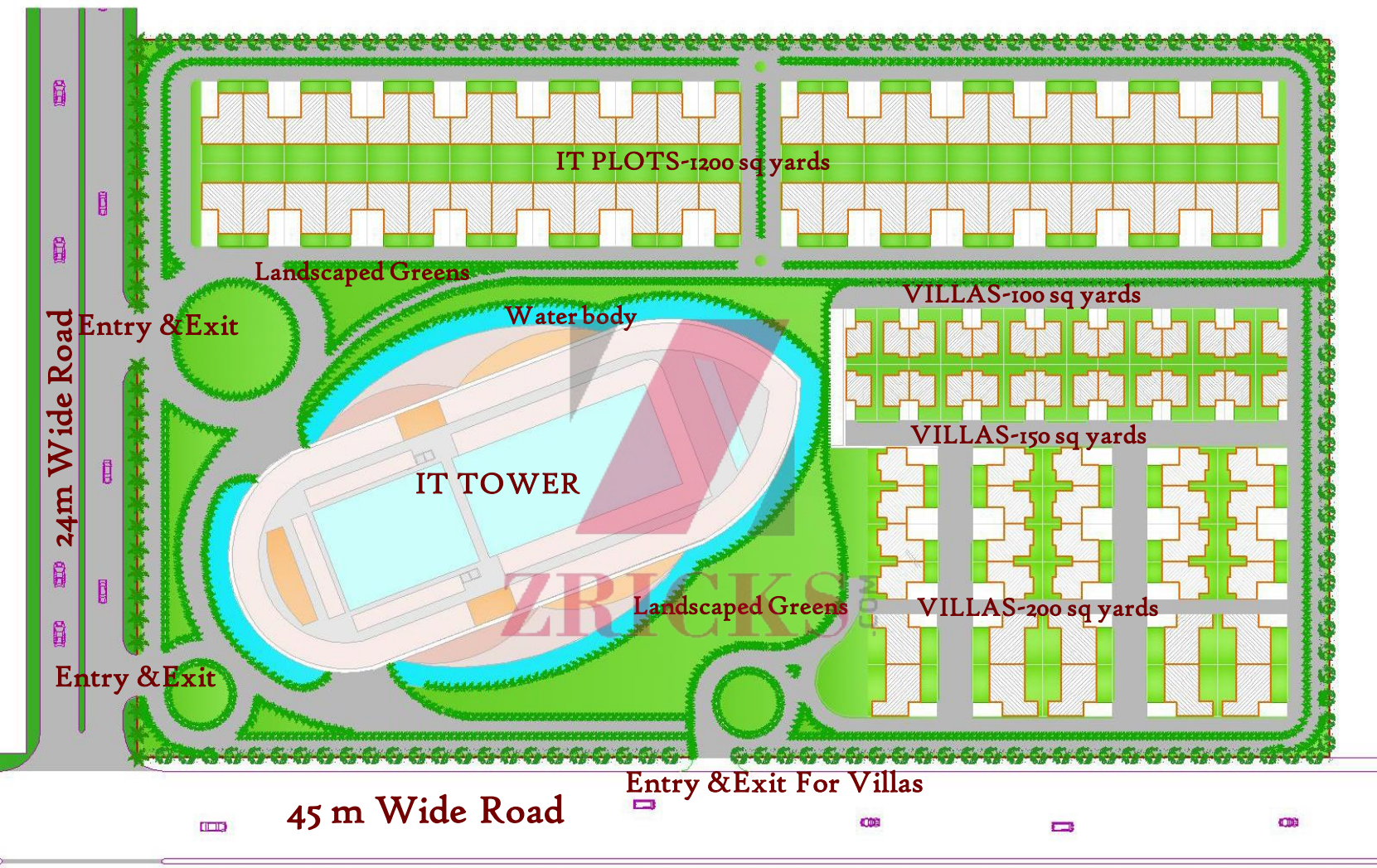


A stylized logo consisting of a large, slanted 'Z' shape. The left vertical bar of the 'Z' is grey, and the right vertical bar is pink. The horizontal bar at the bottom is also pink. The background is a sunset over the ocean.

The Cosmic Cruise ...

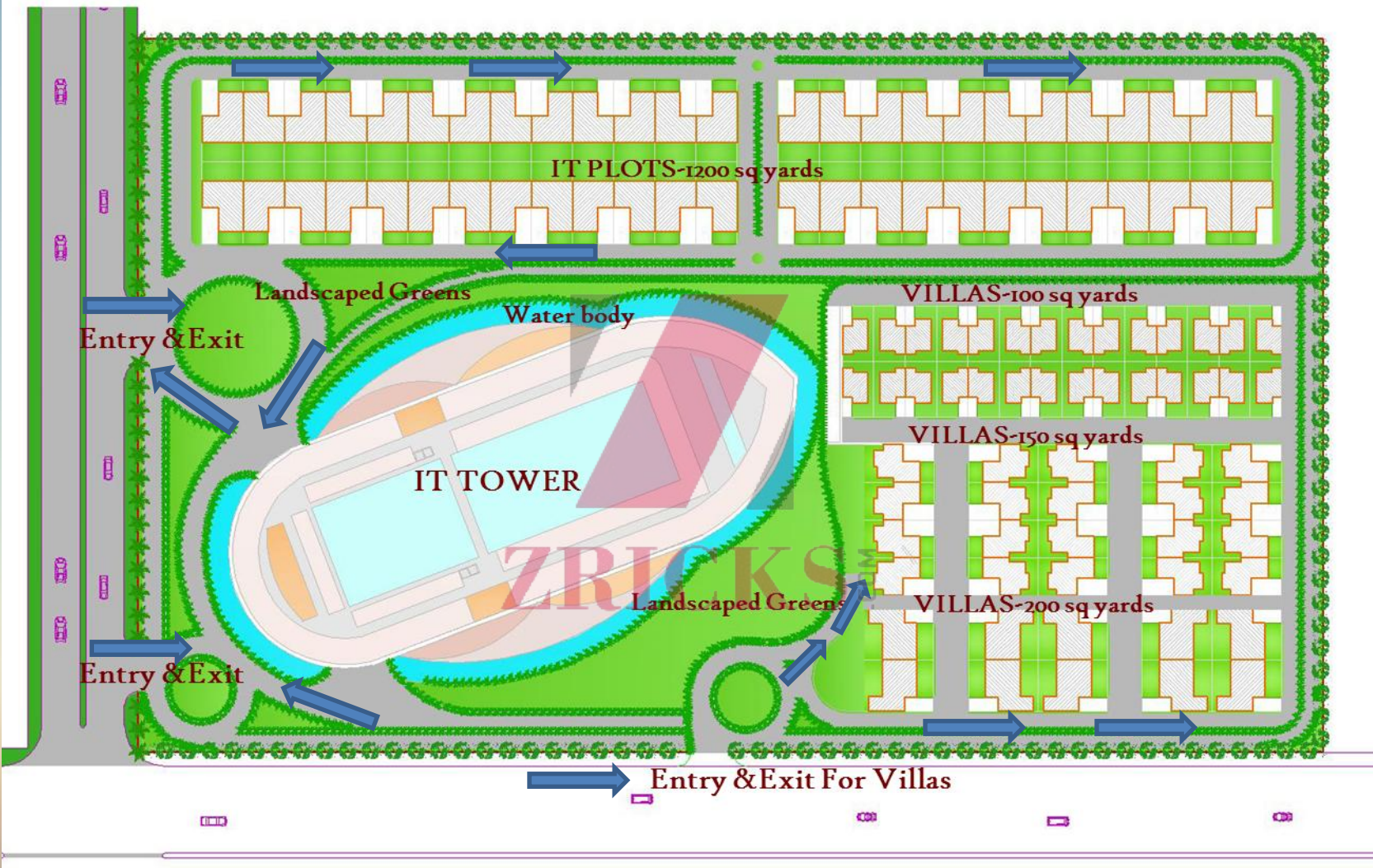
ZRICKS.COM

SITE LAYOUT

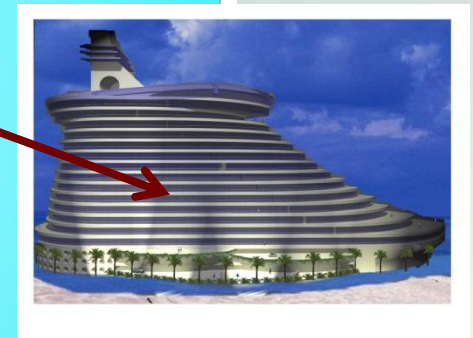
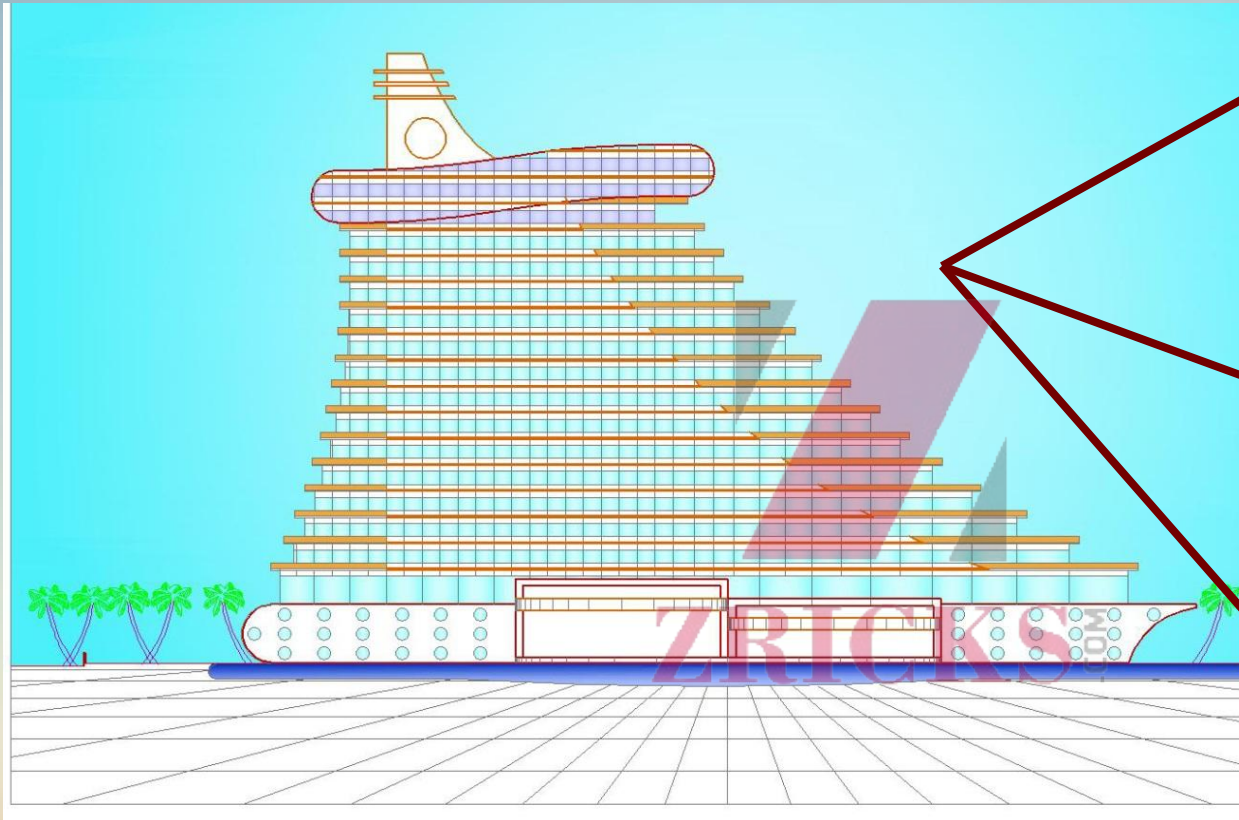


COSMIC CRUISE—CONCEPT DESIGN

CIRCULATION



IT CRUISE ELEVATION



COSMIC CRUISE—CONCEPT DESIGN

VILLAS

200 sq yards



Ground Floor



First Floor



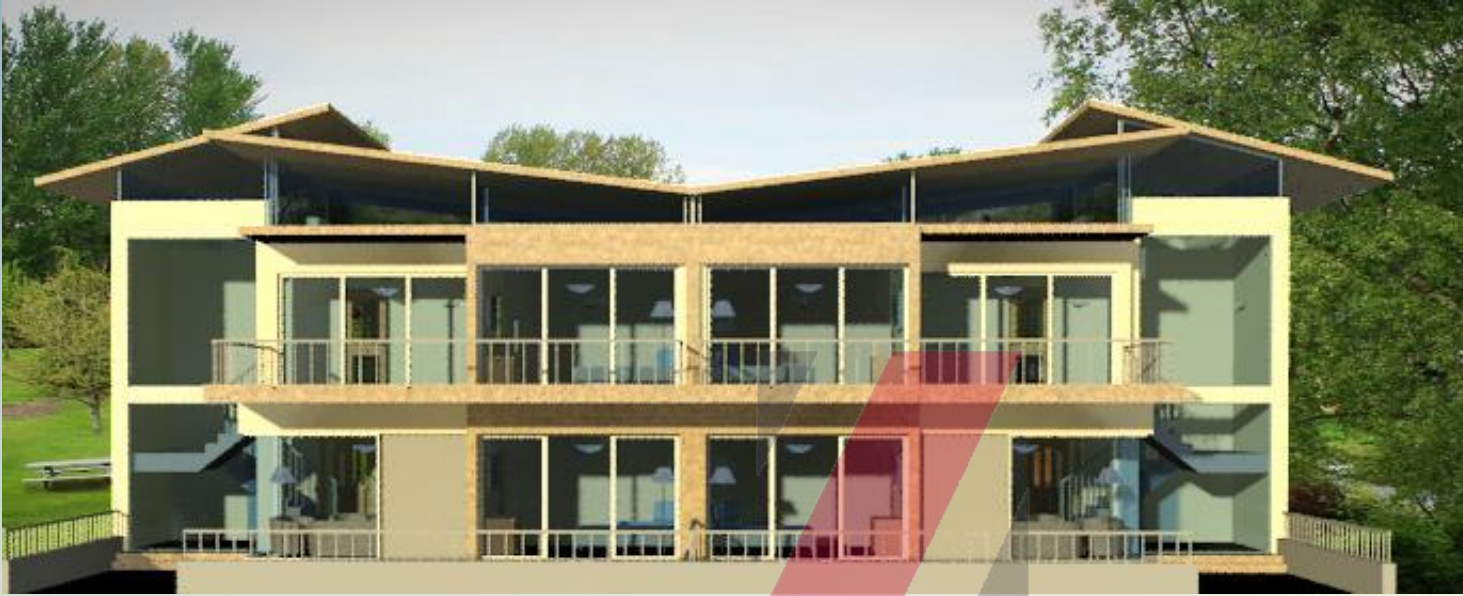
Concept views



COSMIC CRUISE—CONCEPT DESIGN

VILLAS

200 sq yards



STREET VIEW OF VILLA-200 sq yards



Ground Floor



First Floor



COSMIC CRUISE—CONCEPT DESIGN

VILLAS

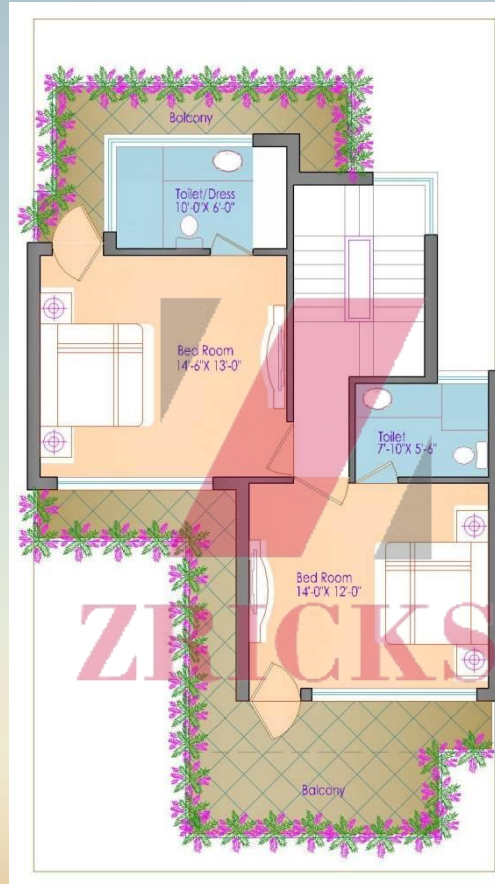
150 sq yards



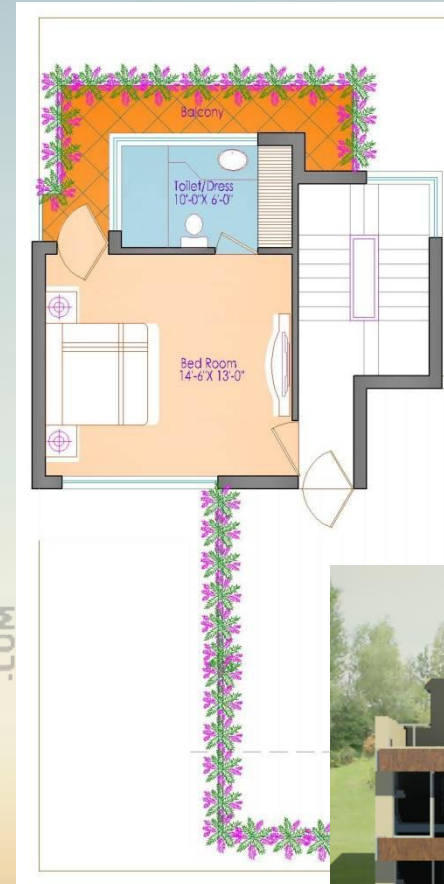
Images



Ground Floor



First Floor



Second Floor



Single Unit



COSMIC CRUISE—CONCEPT DESIGN

VILLAS

150 sq yards



STREET VIEW OF VILLA



Floor Plans



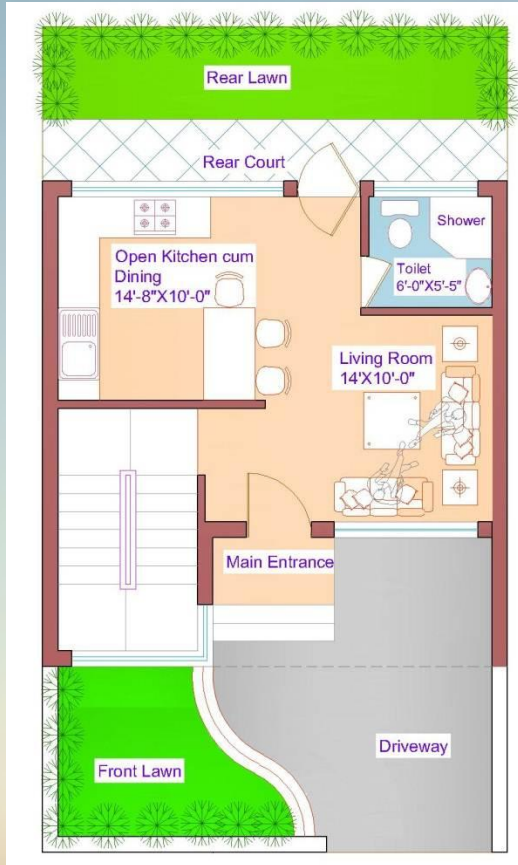
Single Unit



COSMIC CRUISE—CONCEPT DESIGN

VILLAS

100 sq yards



Ground Floor



First Floor



Second Floor



Concept views



COSMIC CRUISE—CONCEPT DESIGN

VILLAS

100 sq yards



STREET VIEW OF VILLA-100 sq yards



Ground Floor



First Floor



Unit View

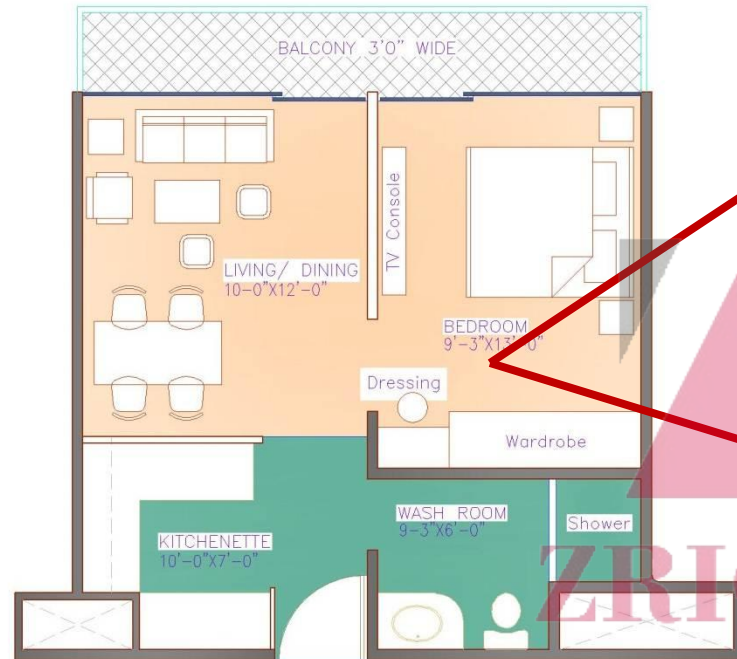


Second Floor

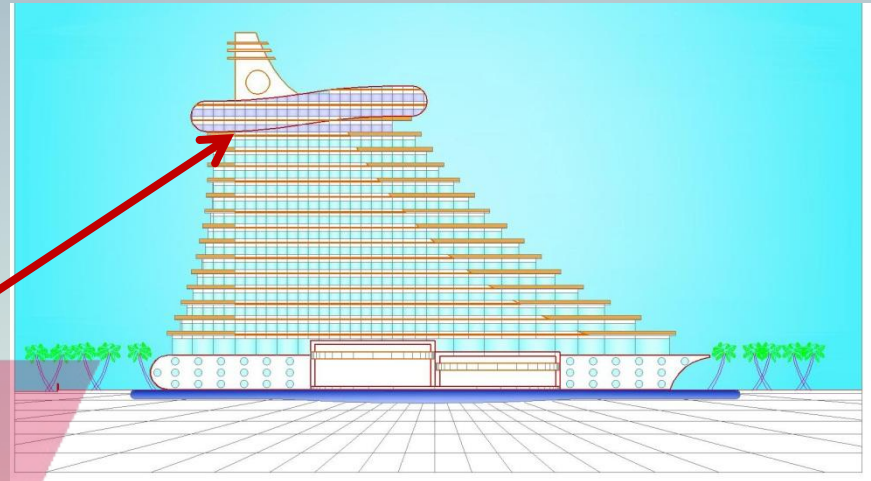


COSMIC CRUISE—CONCEPT DESIGN

STUDIO APARTMENT



TYPICAL PLAN OF A STUDIO APARTMENT
450 SQ FT



Conceptual IT Tower View

Plan of Studio Apartment-450 sq ft



COSMIC CRUISE—CONCEPT DESIGN

IT OFFICES

200 sq yards



Facade treatment



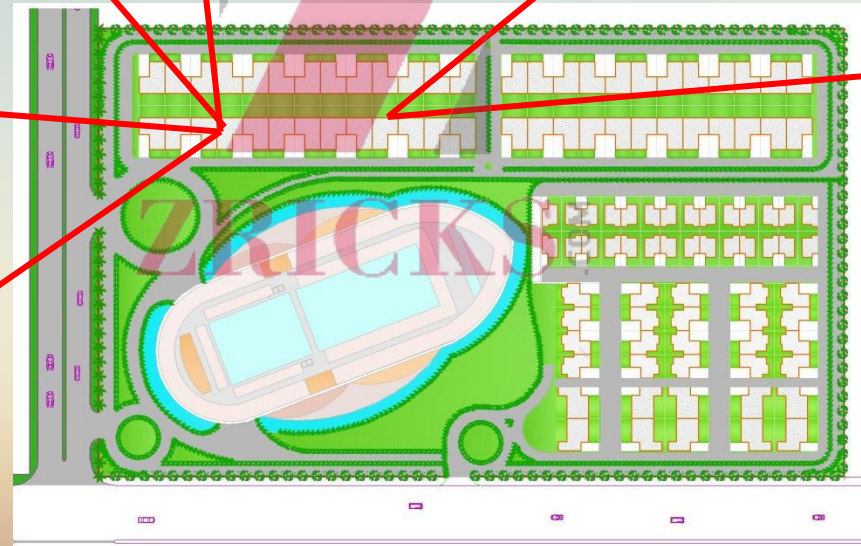
Internal View



External View



Office Interior



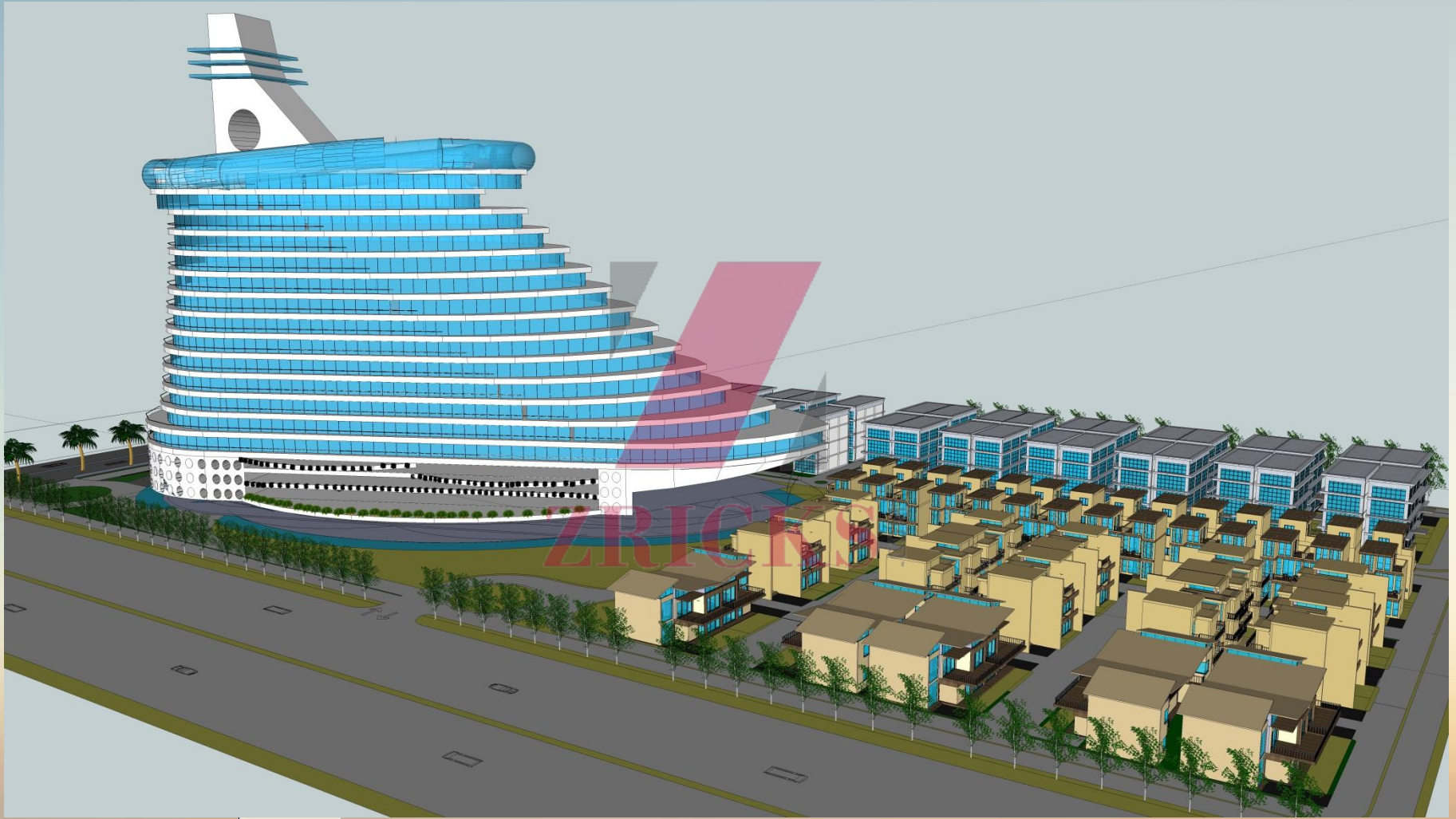
Contemporary Style



COSMIC CRUISE—CONCEPT DESIGN

VIEWS

East View

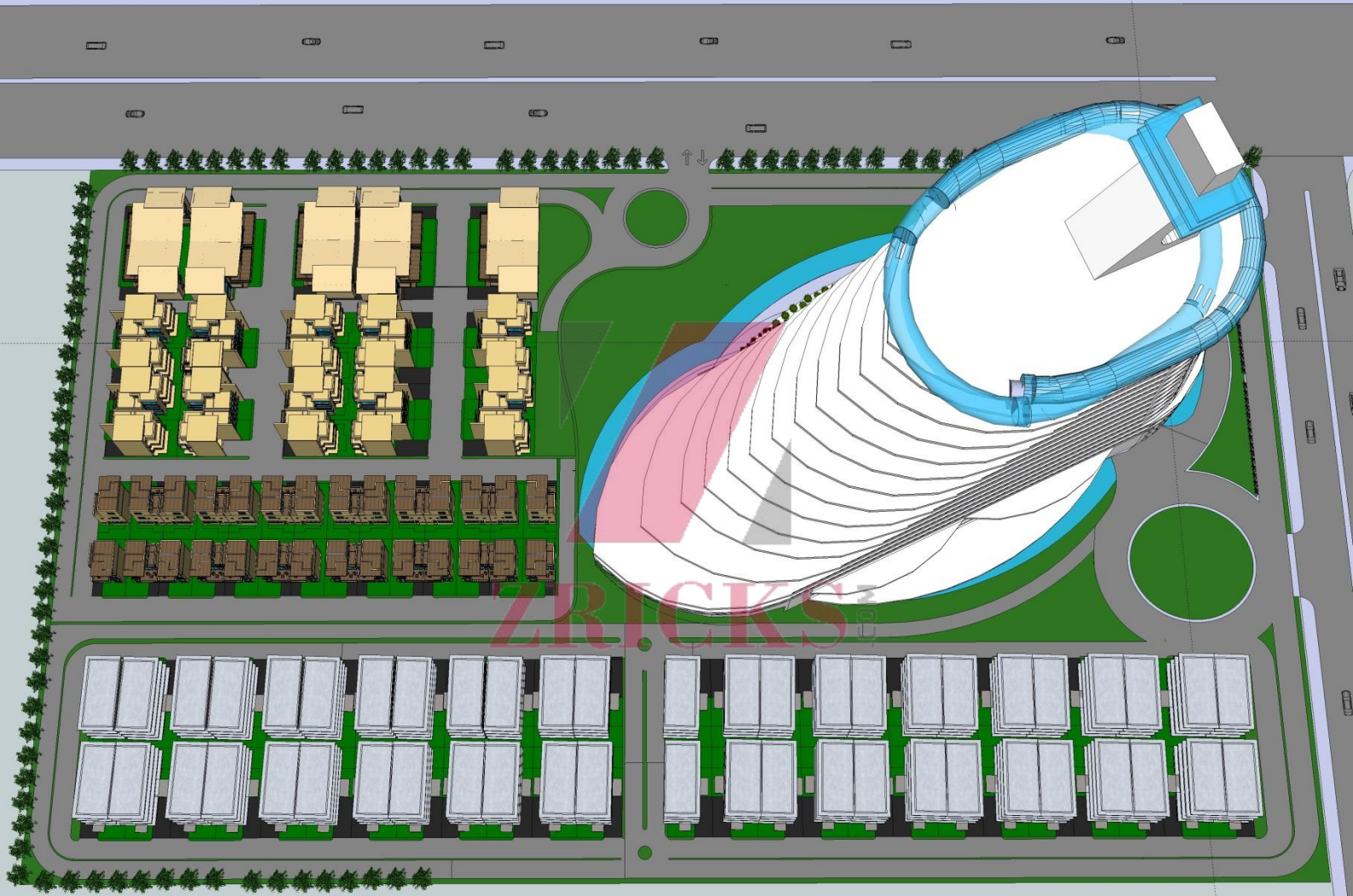


SDB
Consultants

COSMIC CRUISE—CONCEPT DESIGN

VIEWS

North View



COSMIC CRUISE—CONCEPT DESIGN

LOCATIONAL HIGHLIGHTS...

- ✓ Located in the largest Knowledge Park spread over 1500 Acre approved for MLU.
- ✓ Only 10 KM from NOIDA city center.
- ✓ 1 KM from the last metro station to Greater NOIDA west .
- ✓ Located 1 KM away from 130 mtrs link road to Gaur Chowk- Start of G NOIDA (w).
- ✓ 100 Acres of green belt developed in the form of a park 200 meters away
- ✓ IN CLOSE VICINITY TO INDUSTRIES LIKE GM, TCS, YAMAHA, LG, MINDA, WIPRO ETC.
- ✓ DIRECT CONNECT WITH F1 / INDIA'S FIRST NIGHT SAFARI AND CRICKET STADIUM
- ✓ Plot Adjacent to Sports complex and a community centre .
- ✓ Proposed Heliport in KP 5

PROJECT HIGHLIGHTS...

- ✓ Spread over 10 acres two side open plot .
- ✓ Unique Architecture in the Shape and theme of A Cruise .
- ✓ The main office complex surrounded by the water body /Sand and the Palm trees to give a true feel of the ship on the shore .
- ✓ The Project has besides office space, Villas, Studios & IT office plots.
- ✓ 60 Luxury villas in 3 sizes built over 100 /150 and 200 square yards .
- ✓ Studio apartments in the main office complex ..
- ✓ 7 star luxury facilities like Specialty restaurants, Spa , Salon, Bank , Food Court , Night Club , Pub etc



Most exciting Voyage in the Office Space selling is about to set sail.

..... Get ready for a ride aboard Cosmic Cruise !!!

CRU SE



ZRICKS

Price List

| CATEGORY | PRICE |
|---|----------------------|
| • Virtual Space | Rs. 5500 per sq. ft. |
| • Professional Offices (190 sq. ft.) | Rs. 16,30,000 |
| • Corporate Studio (360 sq. ft.) | Rs. 27,95,000 |
| • Unfurnished Executive Office (580 Sq Ft) | Rs. 36,85,000 |
| • Furnished Executive Office (580 Sq Ft) | Rs. 43,10,000 |
| • Studio Apartment (450 sq. ft.) | Rs. 5450 per sq. ft. |
| • Villa (2404 sq. ft.) | Rs. 5375 per sq. ft. |
| • Villa (3604 sq. ft.) | Rs. 5030 per sq. ft. |
| • Villa (4806 sq. ft.) | Rs. 5030 per sq. ft. |
| • Retail Space | Rs. 9000 per sq. ft. |
| • Service Tax (As applicable) | @ 3.09% |

Note: IFMS, EEC, FFC, and Lease rent etc. payable at the time
of possession

Updated on 15 Sep '13



COSMIC STRUCTURES LIMITED.
AN ISO 9001:2008 CERTIFIED
COMPANY

REGD. OFFICE : 9TH FLOOR, HOTEL LE MERIDIEN, COMMERCIAL TOWER,
JANPATH, NEW DELHI – 110 001

NOIDA OFFICE : A-17, SECTOR-16, NOIDA – 201 301

WEBSITE : WWW.COSMICINDIA.IN

EMAIL : INFO@COSMICINDIA.IN

DISCLAIMER:- VISUAL REPRESENTATIONS SHOWN IN THE BROCHURE ARE PURELY CONCEPTUAL. ALL PLANS, SPECIFICATIONS, LAYOUTS ETC. ARE TENTATIVE AND SUBJECT TO VARIATIONS AND MODIFICATIONS. BE THE COMPANY OR COMPETENT AUTHORITIES AND THE COMPANY DOES NOT BEAR ANY LEGAL CONSEQUENCES FOR IT.