




# Gulmohar Elite

2 BHK with Study | 3 BHK | Premium Flats  
@ Green Acres, Neemrana (NCR)

### SALIENT FEATURES OF GREEN ACRES

- Approved from UIT Bhiwadi, Govt. of Rajasthan
- Located at 500 m from NH-8 (Jaipur-Delhi)
- Adjacent to RIICO Japanese Zone residential Area
- Located on 160' and 100' wide road
- Elegantly designed facades with large entrance
- Housing scheme of 200 villas and about 1000 flats

### ASHADEEP ADVANTAGES

- Committed for quality
- Clarity on all charges
- Transparent deals on built-up area
- Monthly updating of site progress
- Timely possessions
- Set up for maintenance & rental services by developers or its service company

### AMENITIES OF GREEN ACRES

- Own water supply system
- Sewage lines with sewage treatment plants
- Rain water Harvesting system
- 33/11 KVA GSS installed in campus
- Underground cable for power supply
- Street light on tubular pole
- Underground Telephone line in Whole campus
- Well Design parks with landscaping
- Network of wide roads
- Convenience store area for basic requirements such as vegetables, grocery, shops, beauty parlor, dairy booth, doctor's chamber etc.
- Temple nearby



### The Location

Distance Chart from	Distance
Delhi	110 Km
Jaipur	160 Km
Bhiwadi	50 Km

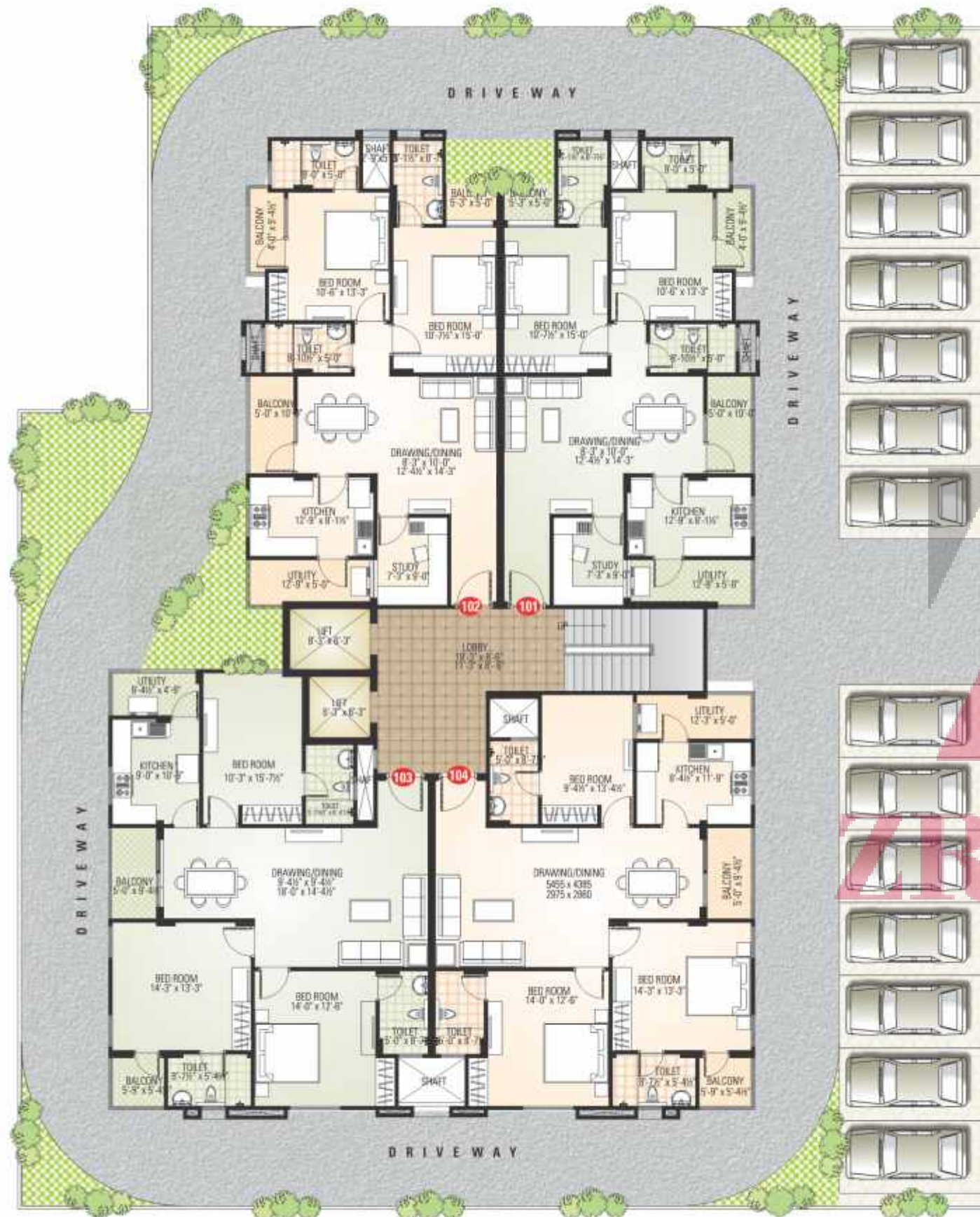


Developed & Owned by: **Reverence Enterprises LLP**  
Marketed by: **Renaissance Buildhome (P) Ltd.**  
6-D, Corporate Tower A2, Jawahar Lal Nehru Marg,  
Near Jawahar Circle, Jaipur 302017  
Jaipur Ph :- 9799602222, 3333,  
Neemrana Ph :- 9799606666, 7777, 8888  
E-mail : [Info@ashadeepgroup.com](mailto:Info@ashadeepgroup.com)  
Website : [www.ashadeepgroup.com](http://www.ashadeepgroup.com)



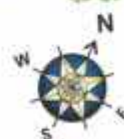
Site Address : Green Acres, Adjoining Japanese Zone Residential Area, NH-8 (Jaipur-Delhi Highway), Neemrana (NCR)





TYPICAL FLOOR PLAN

Flat Type	Flat No.	B.U.A.	Flat Type	Flat No.	B.U.A.
A	101	1242.00 Sq. ft.	B	103	1412.00 Sq. ft.
A	102	1242.00 Sq. ft.	B	104	1406.00 Sq. ft.



Disclaimer:- Models and images shown in the brochure convey only the intent and purpose. It portrays only the artistic impression of the development and shall not be regarded as representation of facts. There may be changes in landscape parks, facilities & hard scape structure of the township. All information, renderings, visual representations and plans may be subjected to change as may be required by the company and/or the competent authorities and shall not form part of any offer or contract nor constitute any warranty nor legal representation by the company.



Flat Type - A | BUA 1242.00 Sq. ft.



Flat Type - B | BUA 1406.00 Sq. ft.

SPECIFICATION OF "GULMOHAR ELITE"

- GENERAL**
  - Earthquake resistant structure
  - Adequate water storage facility
  - Fire fighting arrangement
  - Power back up for common area
  - Modular kitchen & cupboards in bedrooms (at extra cost)
- KITCHEN**
  - Kitchen with Granite counter top with dado in ceramic tiles up to 2' height
  - Stainless steel sink of good quality
- ELECTRICAL**
  - MCB cabinet in entrance lobby
  - All wiring in copper PVC multi strand wires
  - Electrical modular switches & fittings of standard make
  - 1.0 KVA Power Backup for each unit
  - T.V. & Telephone points in all rooms
- Provision of EPABX system
- TOILETS**
  - Ceramic tiles on walls
  - Ceramic sanitary ware of standard make i.e. Cera/Hindware or equivalent
  - Jaquar or equivalent CP fitting
- FLOORING**
  - Vitrified tile flooring in all bed rooms, drawing room and kitchen
  - One room with wooden floor instead of vitrified tiles
  - Stone flooring on staircase/common area
  - Anti skid tiles in balconies.
- DOORS AND WINDOWS**
  - Aluminum window frame with sliding wire-mesh and glass panel
  - Decorative maindoor 32 mm thick
- Other doors 30 mm thick
  - Standard quality hardware & fittings
- PAINTS**
  - Walls finished with POP in all rooms
  - Enamel paint on Doors & Windows
  - All internal walls painted with plastic paint/Luster
  - Exterior walls painted with weather resistant paint
- LIFT**
  - All lifts with ARD (Automatic Rescue Device)
  - Each apartment is accessible by two lifts
- PARKING**
  - Covered parking is also available.