


Surya Kanishk
Tower



Surya Kanishk Tower is a high rise residential project which is located in Vaishali, Ghaziabad. This high rise residential project is innovatively designed filled with all the modern amenities that are necessary for a modern lifestyle. It offers high end apartments which are designed on the principles of international standards. Strategically located in one of the thriving locality of Vaishali, Ghaziabad Surya Kanishk Tower is the dream home for residents who want to experience a comfortable and luxurious lifestyle.

Project USP

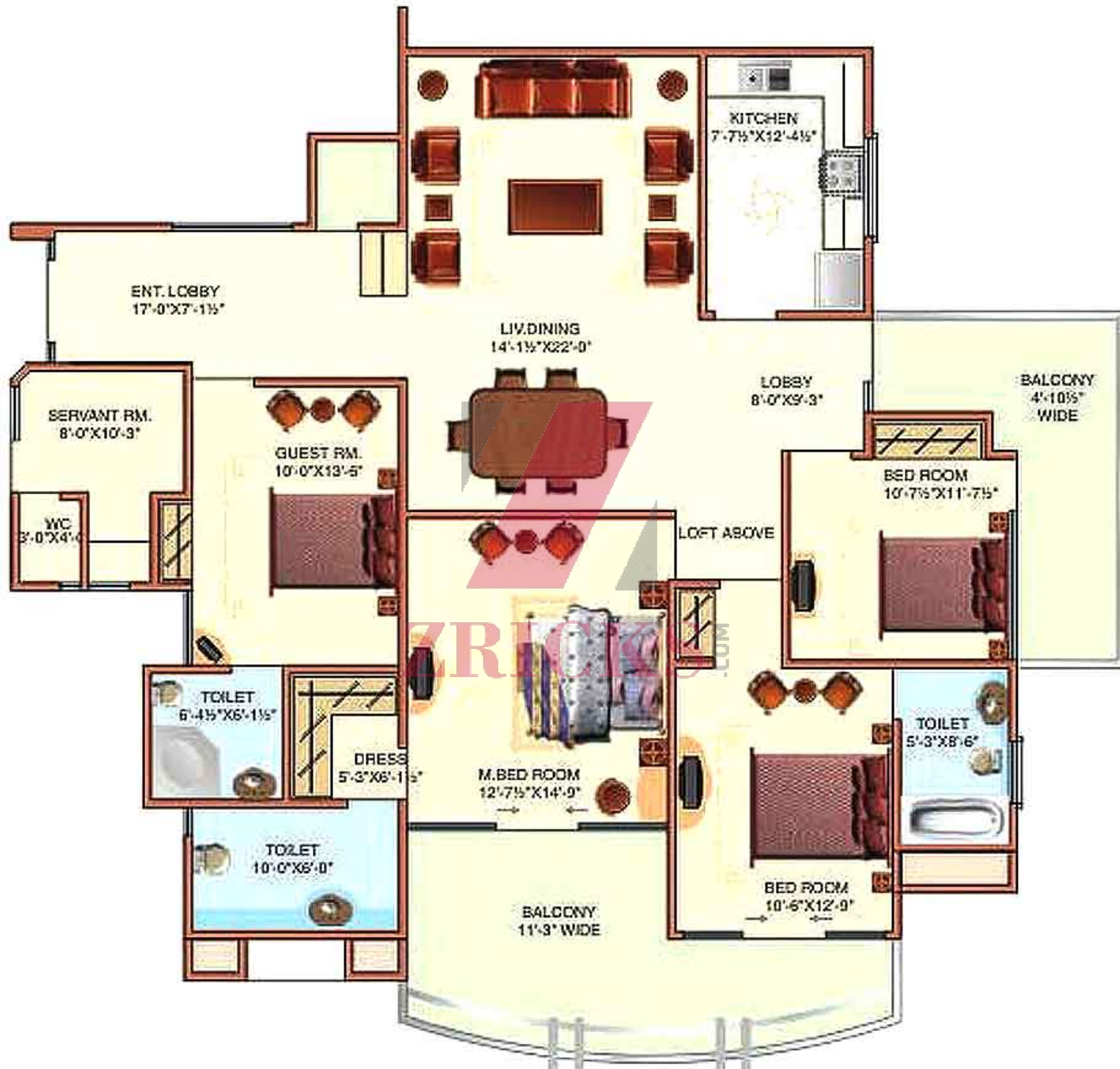
The logo for Zricks.com is centered in the background. It features a large, stylized letter 'Z' in a light pink color. The 'Z' is composed of two main diagonal strokes, with a smaller vertical stroke in the middle. The word 'ZRICKS' is written in a bold, pink, sans-serif font across the middle of the 'Z'. To the right of 'ZRICKS', the text '.COM' is written in a smaller, pink, sans-serif font.

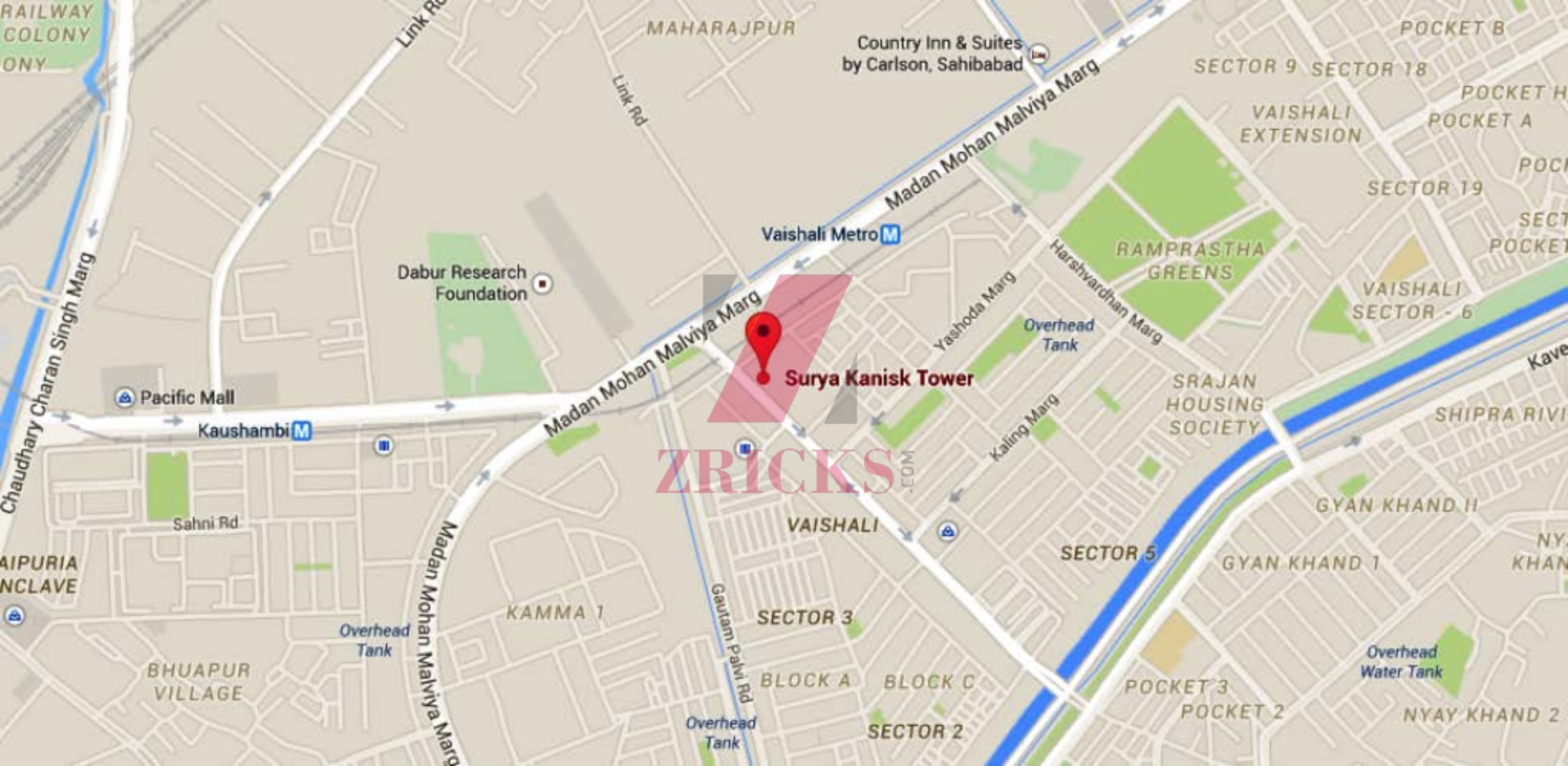
Access to world class club house facilities with an all weather swimming pool
Round the clock high tech security with intercom for safety of the residents
Ample of area reserved for hassle free parking
Artistically pleasing landscaped beautiful green surroundings for a refreshing environment
Well ventilated apartments allowing free flow of light and air
Spacious and wide balconies offering breathtaking views
Enjoy good health with the fully equipped gymnasium





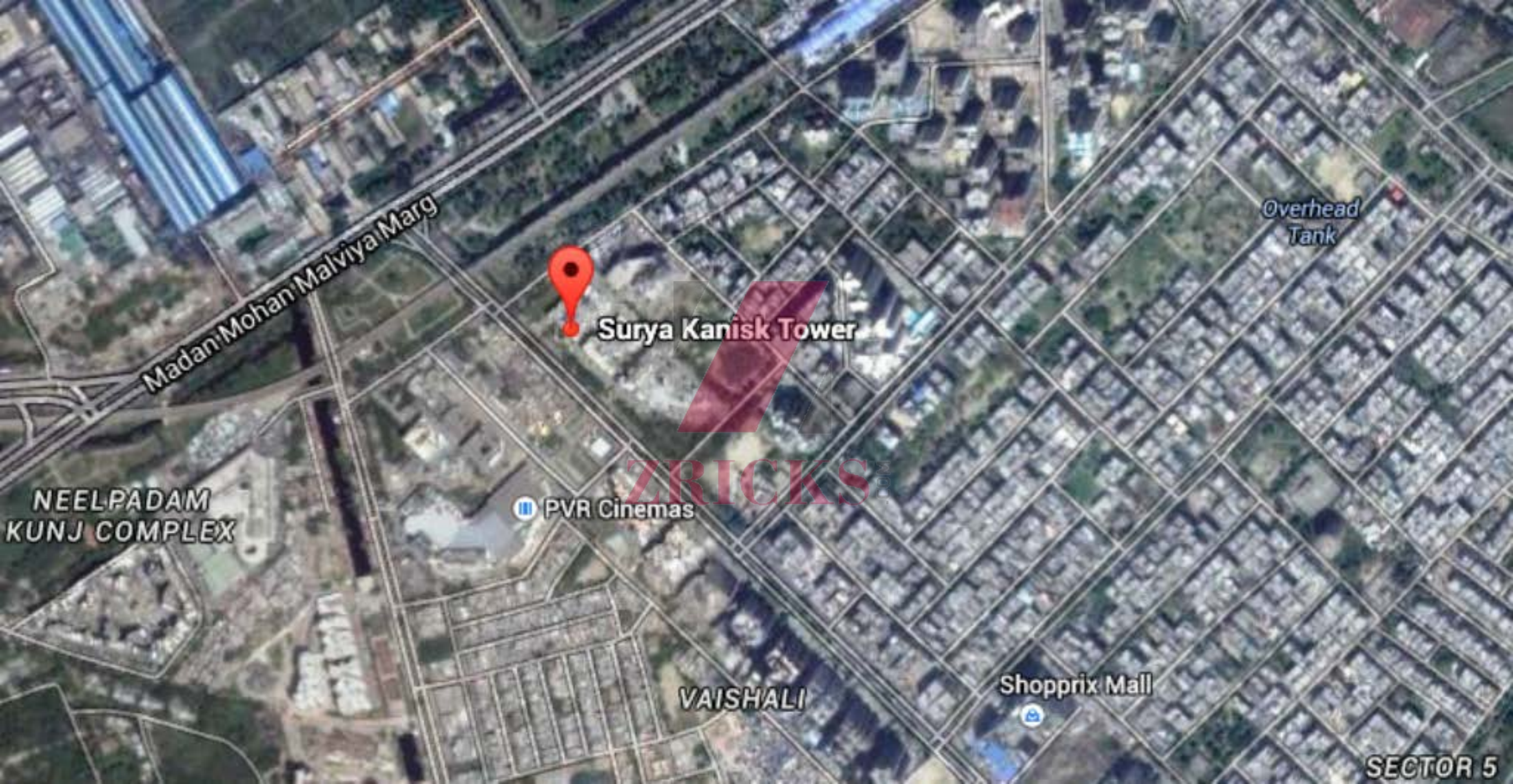






Surya Kanisk Tower

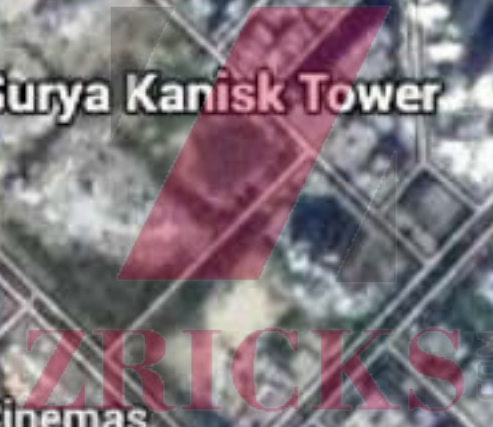
ZIRICKS



Overhead Tank



Surya Kanisk Tower



PVR Cinemas

NEELPADAM
KUNJ COMPLEX

Madan Mohan Malviya Marg

VAISHALI

Shopprix Mall

SECTOR 5

Specifications of Surya Kanishk Tower

WALLS:

The external walls of the building shall be made of 125 mm (5") thick brick of first class quality in Cement-Sand mortar 1:5. Internal Partition Walls shall be 125mm (5") thick for toilets, kitchen and partition between the two flats and balance partition walls shall be 125mm (5") thick in Cement - Sand mortar.

WALL FINISHES:

Washable distemper.

All internal surfaces, including common areas shall be plastered with cement-sand mortar as per Architect's specification, finished with snow white plaster of Paris and painted in pleasing shades of washable distemper (ceiling white). All external walls shall be plastered, finished with Birla/JK wall putty and painted with Acrylic Emulsions (water proof) of standard make such as Johnson, Berger, Tata or equitable etc. as per colour scheme.

FLOORS:

Vitrified tiles in Drawing/Dining & bedrooms of the flats.

Anti skid Floor tiles/Marble tiles bathroom, kitchen and balcony, of the flats.

Floor tiles in Bathroom and Kitchen.

PCC in Parking Space & passage of parking space.

KITCHEN:

Well ventilated kitchen.

Granite working counter.

WALLS with colored glazed tiles minimum 2' high over the Cooking platform.

Cooking table/selves/sink - with Granite slabs.

Concealed plumbing system using standard make PPR/G.I. Pipes.

BATHROOM:

Classy bathrooms.

Separate Closet for washing purpose.

WALLS will be decorated with glazed tiles up to lintel level height.

Concealed plumbing system using standard make PPR/G.I. pipes.

Quality fittings in the Bathrooms including basins and ceramic sanitary wares (English type).

DOORS & WINDOWS:

All with seasoned woods of good quality and texture for door frames.

30 mm thick solid factory made flush door shutter.

Wooden window/ with 2/3 glazed shutters.

M.S. railing to stairs passage and balcony.

All frames, paneled flush door shutters and glass window shutters with superior quality hard wood.

ELECTRICALS:

Modular Switches.

Electrical wiring will be done with ISI approved PVC insulated, copper wires concealed in the walls. For safety of each flat MCB to be provided at the incomer. For light sufficient number power point to be provided in each Bedroom, fan similarly at bathroom, power points to be provided for light fan. Kitchen shall have points connecting light, exhaust fans, cooking. Electrical call bell point at entrance, telephone point & T.V. point in each flat.

WATER SUPPLY:

Overhead tanks with submersible pump for uninterrupted adequate water supply for the residents of the apartments for that a bore well is required to be dug.

COMPOUND:

Compound will be paved wherever required and will have all around.

M.S. Grill gates to be provided.

ELEVATORS:

Brush steel SS finish for lift interiors.

Every tower will have adequate passenger electric elevator.

GENERATOR:

100% power back-up.

A diesel/petrol generator with AMP panel to be provided to cope up with Emergency.

Power requirements in common area light and water pump.

Power back-up facility of 1KVA for each flat.

SECURITY:

Access Control: Video streaming of visitors from main gate.

Round the clock centralized security with intercom facility.

