





JAYPEE GREENS
SPORTS CITY NORTH



SHOP & OFFICE
COMPLEX

JAYPEE GREENS
SPORTS CITY

JAYPEE GREENS
SPORTS CITY EAST

TO AGRA



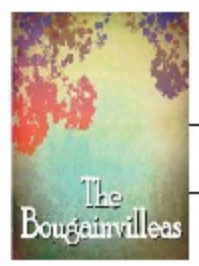
JAYPEE GREENS SPORTS CITY SDZ, NORTH & EAST

(LAUNCHED PROJECT DETAILS)

PROJECTS LAUNCHED IN SDZ & JPSC EAST	
S.NO	PROJECT NAME
1	COUNTRY HOMES-I & II & VILLA EXPAZA
2	KROWNS
3	GREENCREST HOMES & VILLA EXP
4	BOUGAINVILLEA
5	KASSIA
6	KOVE
7	BUDDH CIRCUIT STUDIOS - I (L&T)
8	YAMUNA VIHAR
9	BUDDH CIRCUIT STUDIOS - II (L&T)
10	NATUREVUE (L&T)
11	UDAAN / BOULEVARD COURT (DFI)
12	AMAN-III
13	SUNNYVALE HOMES + VILLA EXPANZA
14	SPORTSVILLE
15	TANISHQ SQUARE

JAYPEE GREENS SPORTS CITY NORTH

SPORTS CITY NORTH :LFD 2
LAND = 1014 ACRES



SPORTS CITY NORTH :LFD 2
LAND = 101 ACRES

JAYPEE GREENS SPORTS CITY

SPORTS CITY SDZ
NON CORE AREA = 1603 ACRES
CORE AREA = 867 ACRES

AGRA MIXED USE LAND
85 ACRES : LFD -5

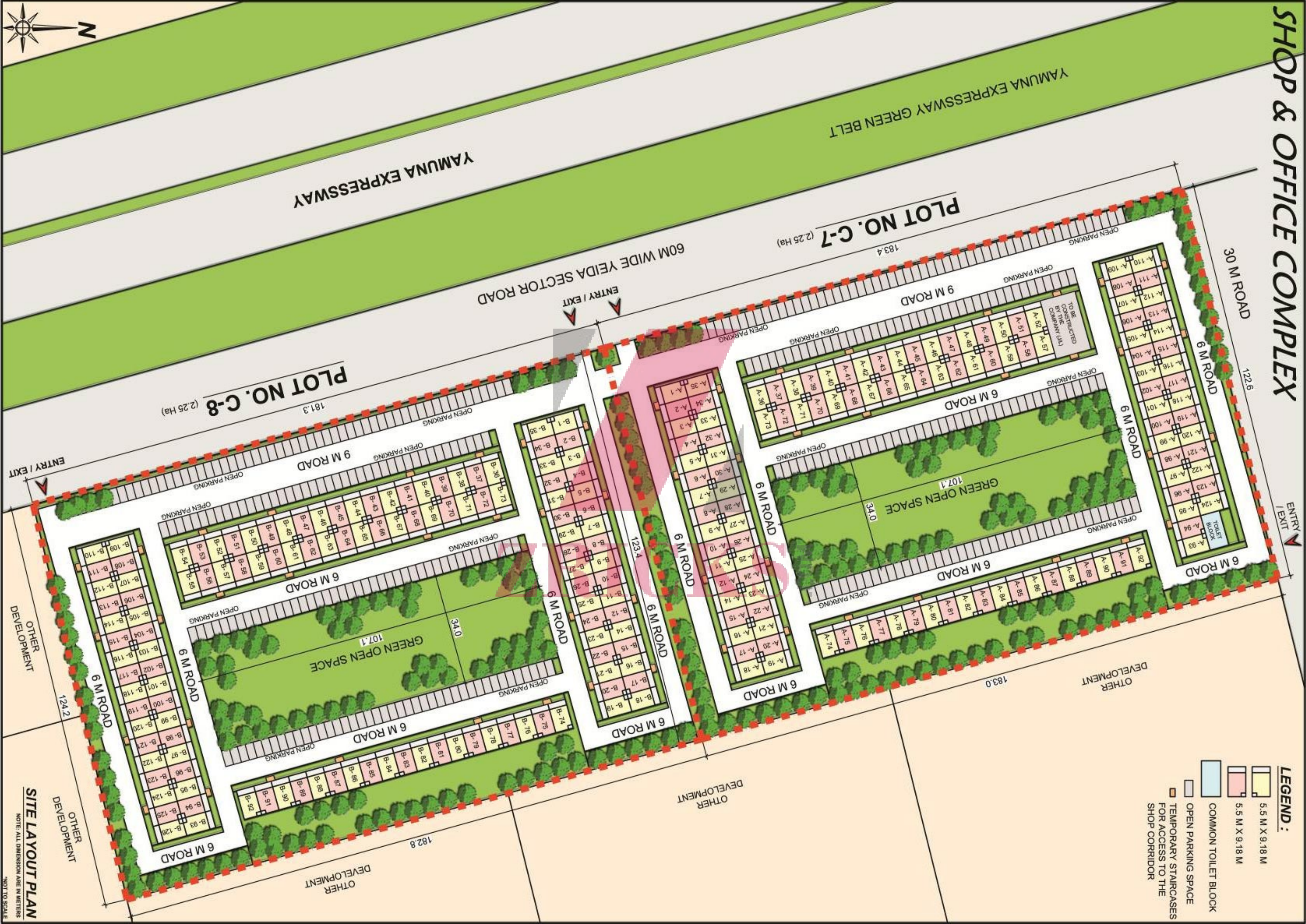
JAYPEE GREENS SPORTS CITY EAST

SPORTS CITY EAST :LFD 3
LAND = 1355 ACRES

CORE AREA BOUNDARY
AREA = 867 ACRES



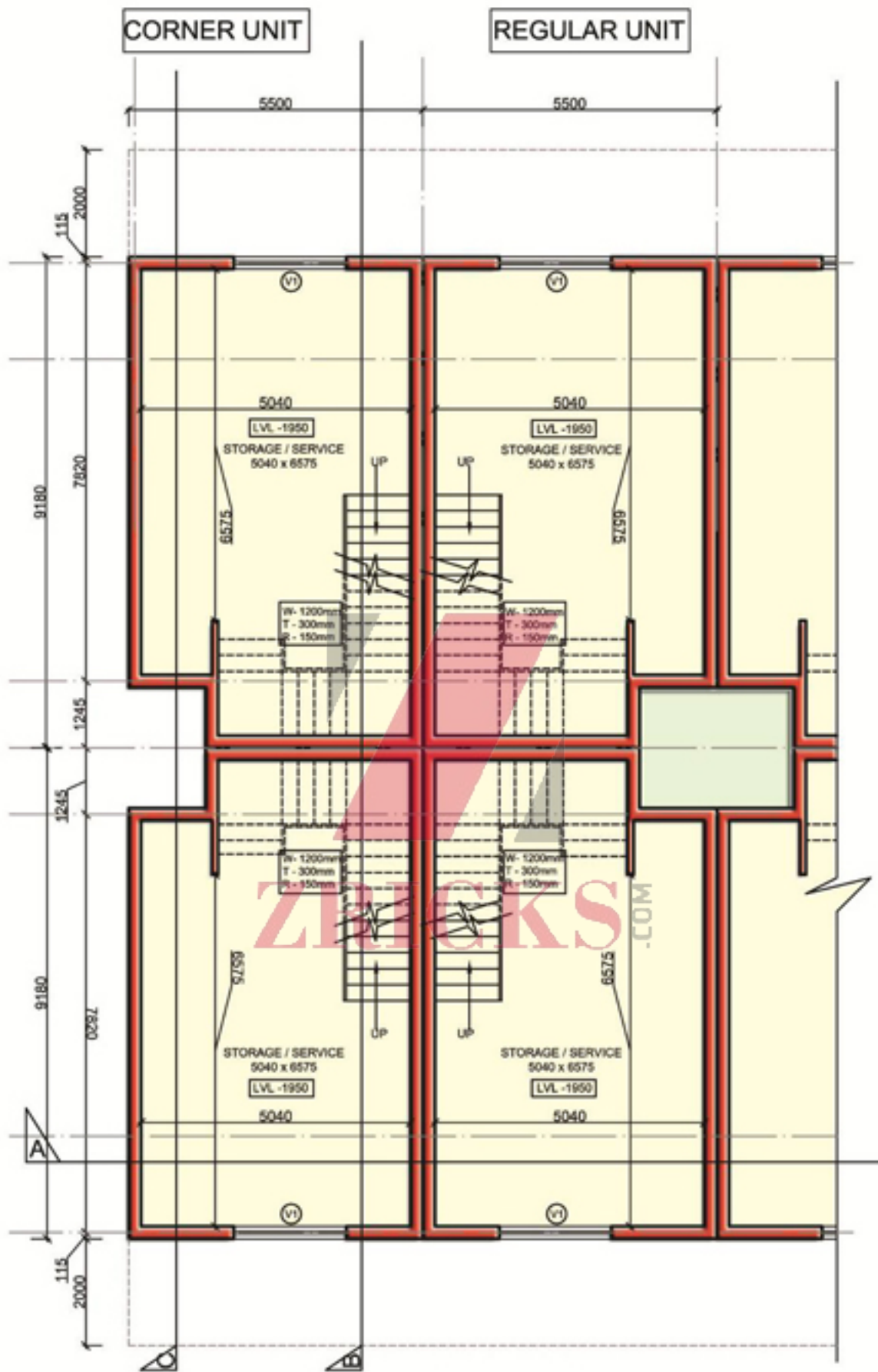
SHOP & OFFICE COMPLEX



LEGEND :

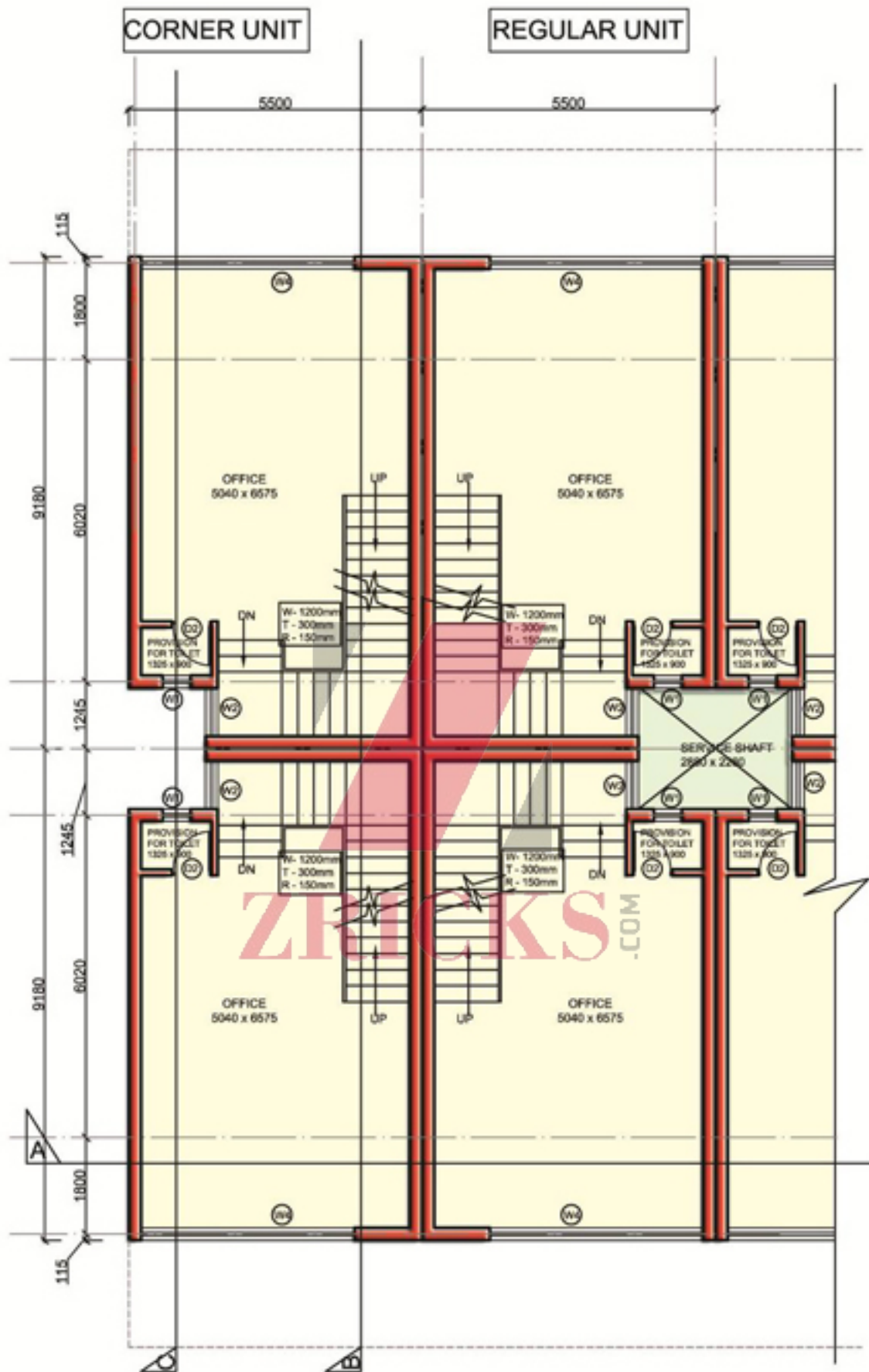
- 5.5 M X 9.18 M
- 5.5 M X 9.18 M
- COMMON TOILET BLOCK
- OPEN PARKING SPACE
- TEMPORARY STAIRCASES FOR ACCESS TO THE SHOP CORRIDOR

SITE LAYOUT PLAN
NOTE: ALL DIMENSION ARE IN METERS
NOT TO SCALE



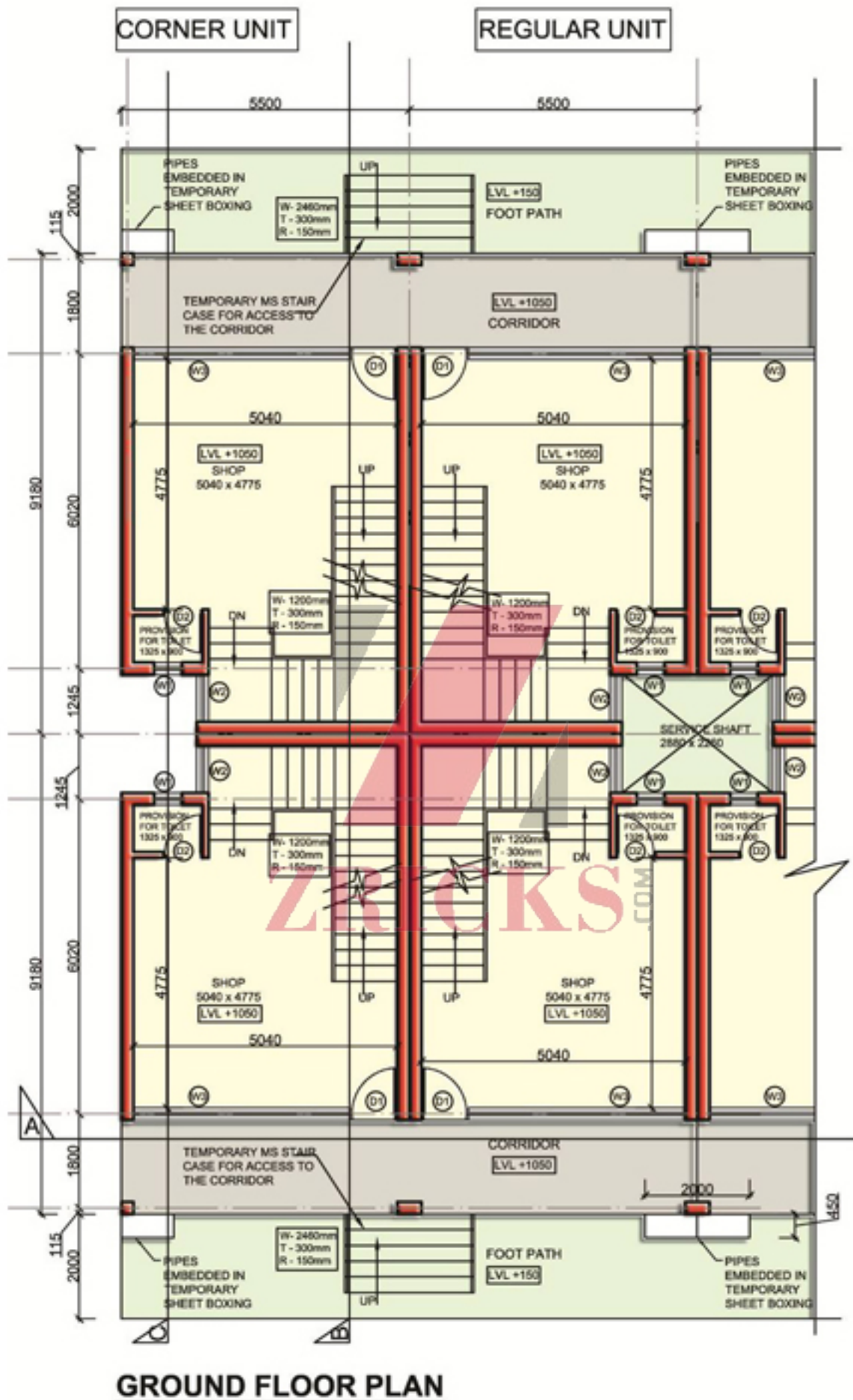
BASEMENT FLOOR PLAN

Note: Building construction is to be done by the allottee after possession.



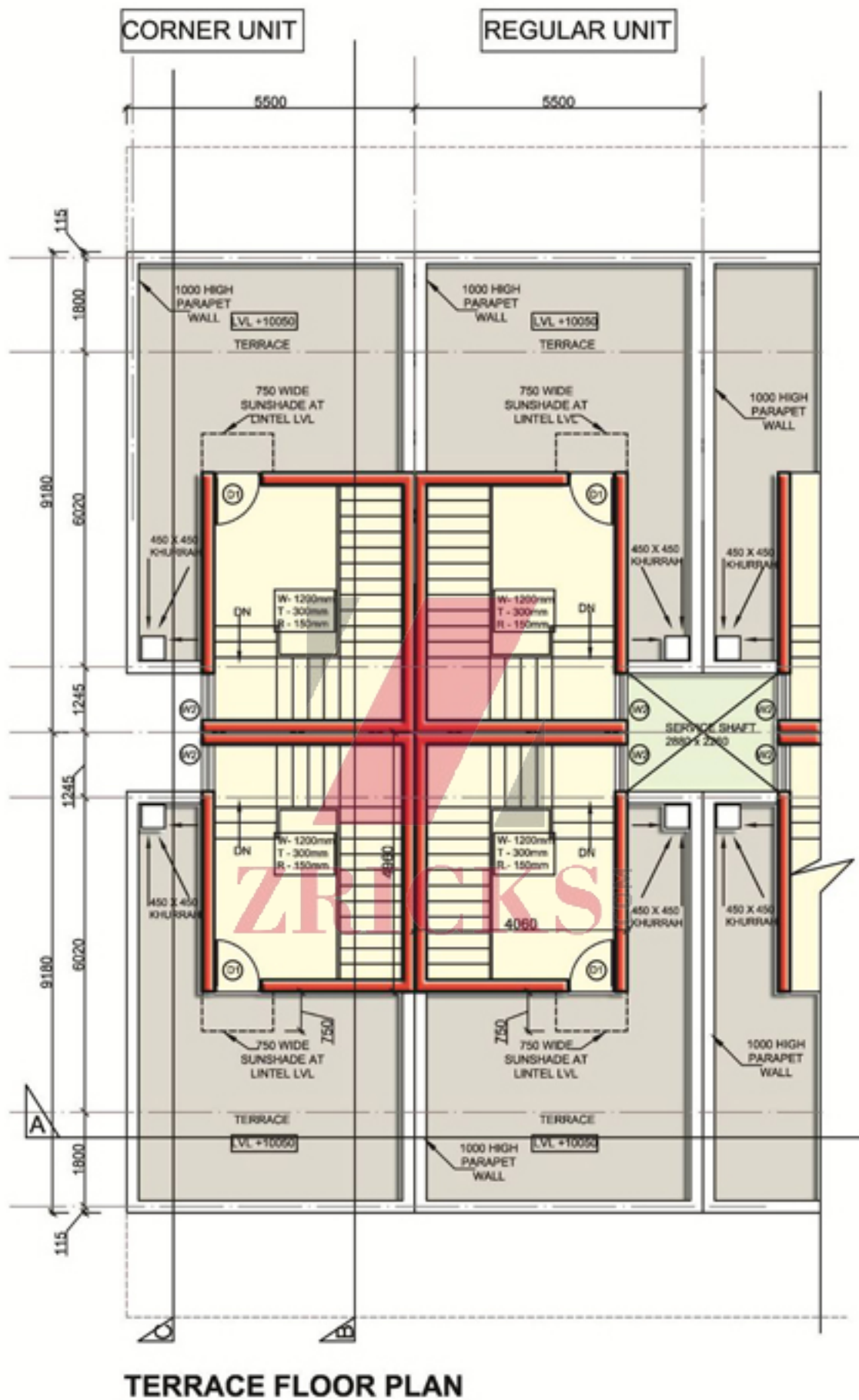
TYPICAL FLOOR PLAN (FIRST & SECOND FLOOR)

Note: Building construction is to be done by the allottee after possession.



GROUND FLOOR PLAN

Note: Building construction is to be done by the allottee after possession.



TERRACE FLOOR PLAN

Note: Building construction is to be done by the allottee after possession.



ZRICKS