

JAYPEE GREENS  
Kensington  
Heights



YOUR VERY OWN SPACE AT WISH TOWN

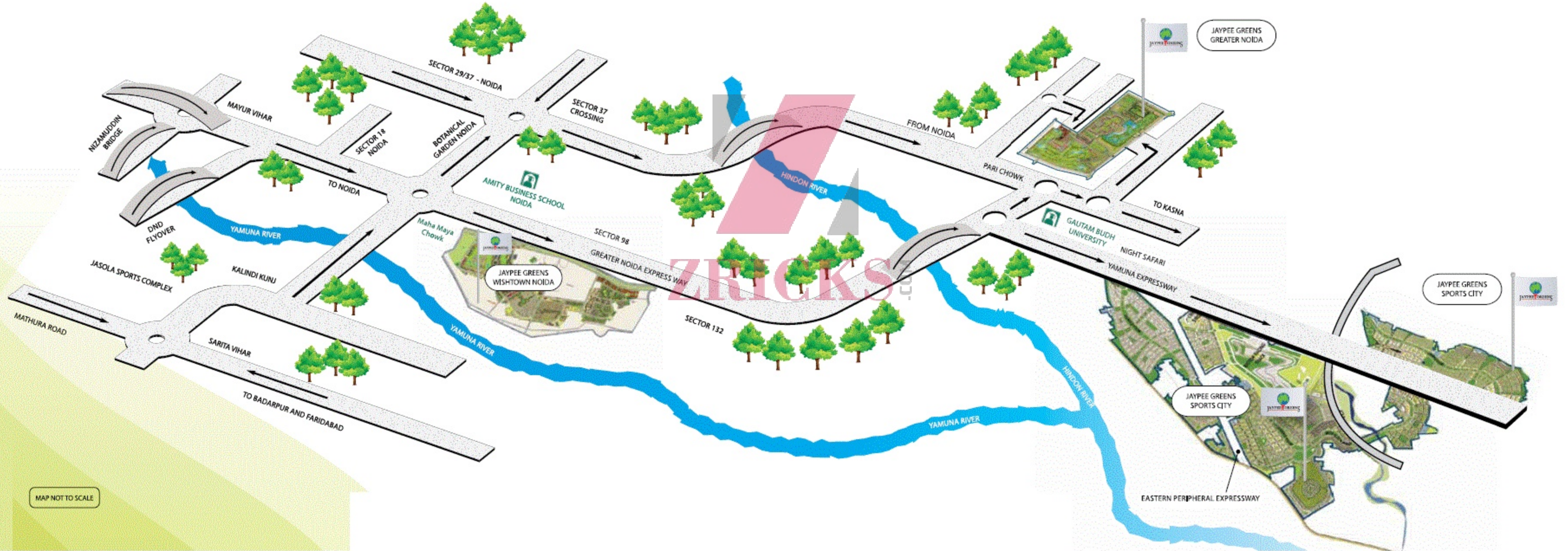


ZRICKS





# JAYPEE GREENS Location Map





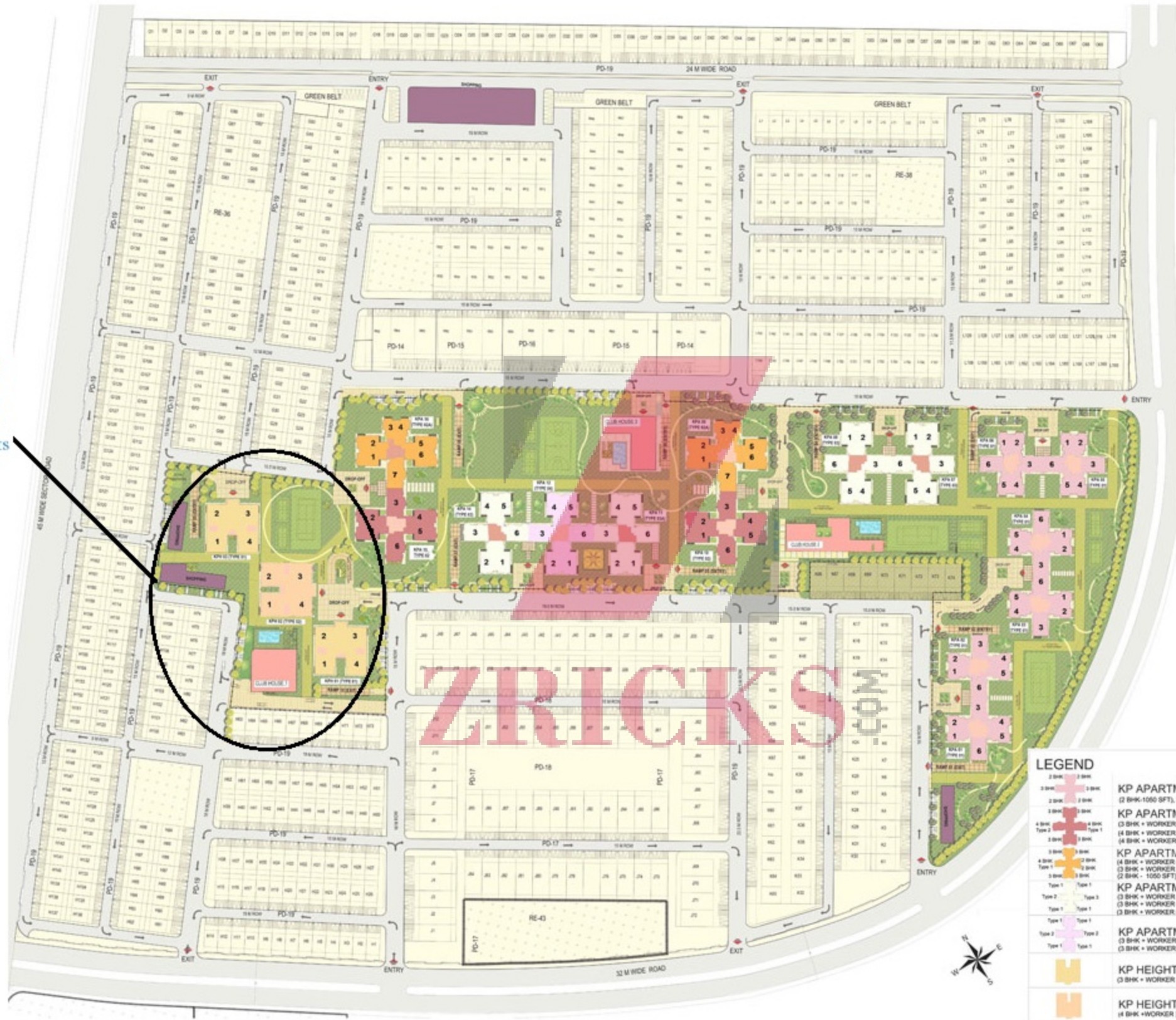


JAYPEE GREENS, WISH TOWN, NOIDA  
 MASTER PLAN

ARCOP



JAYPEE GREENS  
**Kensington**  
 Heights  
 YOUR VERY OWN SPACE AT WISH TOWN



**LEGEND**

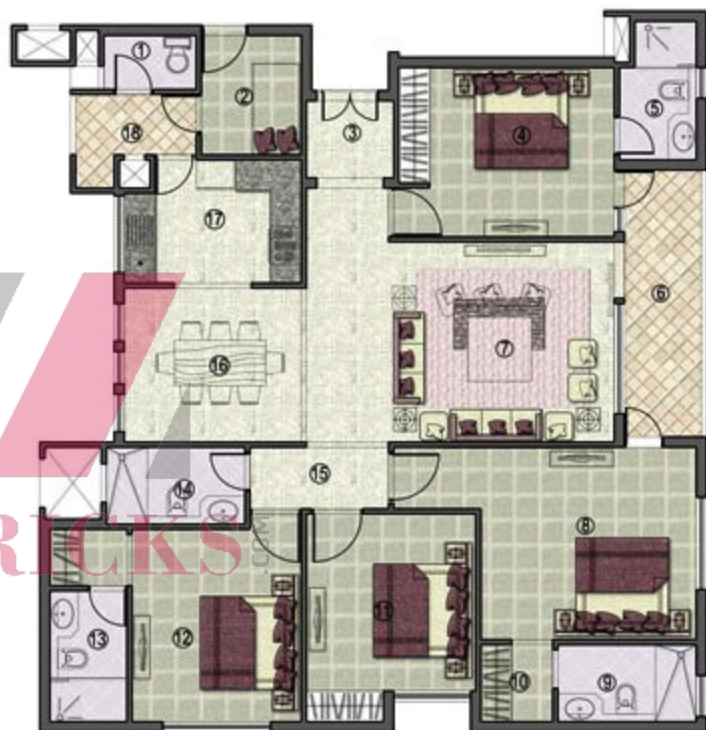
	<b>KP APARTMENTS- TYPE 1</b> (2 BHK-1050 SFT), 3BHK(1450 SFT)
	<b>KP APARTMENTS- TYPE 2</b> (3 BHK + WORKER (TYPE 1) - 1500 SFT) (4 BHK + WORKER (TYPE 1) - 1950 SFT) (4 BHK + WORKER (TYPE 2) - 1980 SFT)
	<b>KP APARTMENTS- TYPE 2A</b> (4 BHK + WORKER (TYPE 1) - 1950 SFT) (3 BHK + WORKER (TYPE 1) - 1500 SFT) (2 BHK - 1050 SFT)
	<b>KP APARTMENTS- TYPE 3</b> (3 BHK + WORKER (TYPE 1) - 1500 SFT) (3 BHK + WORKER (TYPE 2) - 1525 SFT) (3 BHK + WORKER (TYPE 3) - 1550 SFT)
	<b>KP APARTMENTS- TYPE 4</b> (3 BHK + WORKER (TYPE 1) - 1500 SFT) (3 BHK + WORKER (TYPE 2) - 1525 SFT)
	<b>KP HEIGHTS- TYPE 1</b> (3 BHK + WORKER) - 1800 SFT
	<b>KP HEIGHTS- TYPE 2</b> (4 BHK + WORKER) - 2100 SFT



SPACE	DIMENSIONS	
① TOILET	(1675mmX1050mm)	(5'-6"X3'-6")
② UTILITY	(1825mmX2300mm)	(6'-0"X7'-8")
③ FOYER	(1625mmX1525mm)	(5'-4"X5'-0")
④ BEDROOM	(4175mmX3350mm)	(13'-8"X11'-0")
⑤ TOILET	(1525mmX2740mm)	(5'-0"X9'-0")
⑥ BALCONY	(1625mmX5375mm)	(5'-4"X17'-10")
⑦ LIVING AREA	(5875mmX4125mm)	(19'-4"X13'-6")
⑧ M. BEDROOM	(4200mmX3900mm)	(14'-0"X12'-10")
⑨ TOILET	(1525mmX2740mm)	(5'-0"X9'-0")
⑩ TOILET	(1525mmX2740mm)	(5'-0"X9'-0")
⑪ BEDROOM	(3350mmX3900mm)	(11'-0"X12'-10")
⑫ DINING	(3350mmX3200mm)	(11'-0"X10'-7")
⑬ KITCHEN	(3350mmX2440mm)	(11'-0"X8'-0")
⑭ UTILITY BAL.	(2200mmX1150mm)	(7'-4"X3'-10")



SPACE	DIMENSIONS	
① TOILET	(1825mmX1050mm)	(6'-0"X3'-6")
② UTILITY	(1975mmX2300mm)	(6'-6"X7'-8")
③ FOYER	(1625mmX1525mm)	(5'-8"X5'-0")
④ BEDROOM	(4200mmX3350mm)	(14'-0"X11'-0")
⑤ TOILET	(1525mmX2740mm)	(5'-0"X9'-0")
⑥ BALCONY	(1625mmX5375mm)	(5'-4"X17'-4")
⑦ LIVING AREA	(5875mmX4125mm)	(19'-4"X13'-6")
⑧ M. BEDROOM	(4200mmX3800mm)	(14'-0"X12'-6")
⑨ TOILET	(2740mmX1525mm)	(9'-0"X5'-0")
⑩ DRESS	(1450mmX1525mm)	(4'-8"X5'-0")
⑪ BEDROOM	(3350mmX3500mm)	(11'-0"X11'-6")
⑫ BEDROOM	(3350mmX3800mm)	(11'-0"X12'-6")
⑬ TOILET	(1525mmX2575mm)	(5'-0"X8'-6")
⑭ TOILET	(2740mmX1525mm)	(9'-0"X5'-0")
⑮ BEDROOM ENTRY	(2740mmX1300mm)	(9'-0"X4'-4")
⑯ DINING	(3600mmX3050mm)	(11'-10"X10'-0")
⑰ KITCHEN	(3500mmX2440mm)	(11'-6"X8'-0")
⑱ UTILITY BAL.	(2390mmX1150mm)	(7'-10"X3'-10")



product level specifications	
Structure	R.C.C Framed Structure
Living Room, Dining Room & Lounge	
Floors	Tiles / Laminated floor
External Doors and Windows	Aluminium Powder Coated / UPVC
Walls	Internal : Oil bound distemper External : Good quality external grade paint
Internal doors	Enamel painted flush doors
Bedrooms & Dress	
Floors	Tiles / Laminated floor
External Doors and Windows	Aluminum Powder Coated / UPVC
Walls	Internal : Oil bound distemper External : Good quality external grade paint
Internal doors	Enamel painted flush doors
Toilets	
Floors	Anti Skid Ceramic / Vitrified Tiles
External Doors and Windows	Aluminum Powder Coated / UPVC
Fixture and Fittings	All provided of standard company make
Walls	Tiles in cladding upto 7' in shower area and 3'-6" in balance areas, Balance walls painted in oil bound distemper
Internal doors	Enamel painted Flush doors
Kitchen	
Floors	Anti Skid Ceramic / Vitrified Tiles
External Doors and Windows	Aluminum Powder Coated / UPVC
Fixture and Fittings	Marble Top with sink
Walls	Ceramic tiles 2'-6" above counter, Balances walls painted in Oil bound distemper
Balconies / Verandah	
Floors	Ceramic / vetrified Mosaic Tiles
Railings	MS Railing as per Design
Lift Lobbies / Corridors	
Floors	Ceramic / Mosaic Tiles / Marble or equivalent
Walls	Oil bound distemper





ZRICKS

www.zricks.com