



Change life into Luxury ...  
It's time.



**ZRICKS**.COM



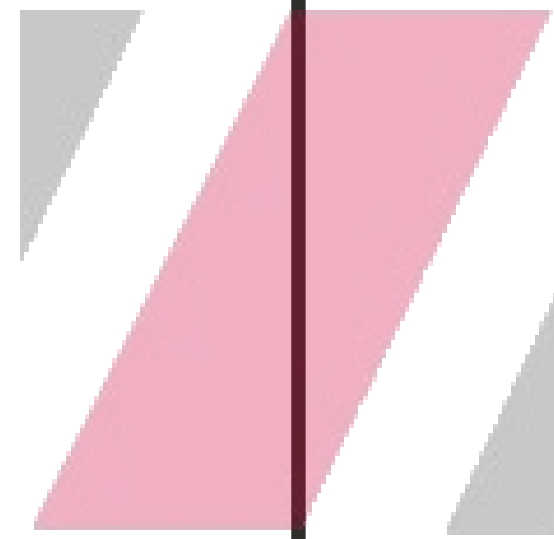


Victory Ace is a housing complex that holds 3 & 4 BHK apartments and comes complete with amenities; sprawling luscious green gardens; comfortable, spacious homely apartments and beautifully planned Noida, Express Highway. Victory Ace takes pride in its eco-friendly space that comprises state-of-the-art additions, with incredible care applied to detail and design.



ZRICKS





ZRICKS.COM

There comes a point in your life when you just want to experience something quite unlike what you have in bustling, smog-filled cities. What happened to good old-fashioned gatherings in the garden over tea? Or long walks in the park that housed the freshest air? Now you can do all that and more, while rolling in the lap of nature's untouched splendour while living in an urban lifescape.





This project offers affordable, nature-abundant styled homes and surroundings to tenants who wish for a lifestyle upgrade. Victory Ace, created out of the best resources and expert knowledge, is a housing complex that will turn lives around.

**ZRICKS**.COM



Victory Projects believes in building homes and other spaces in a way that supersedes the expectations of those who will move into them. They infuse their ideas on design with lasting aesthetic appeal.

---



Victory Projects' architecture blends style with an air of modernism into their design. During the planning process, they can anticipate how their projects will stand the test of time, and how people will instantly connect with the result. So when they decided to create Victory Ace, the result was a ying-yang of incredible taste, tranquility and extreme comfort; the perfect balance.

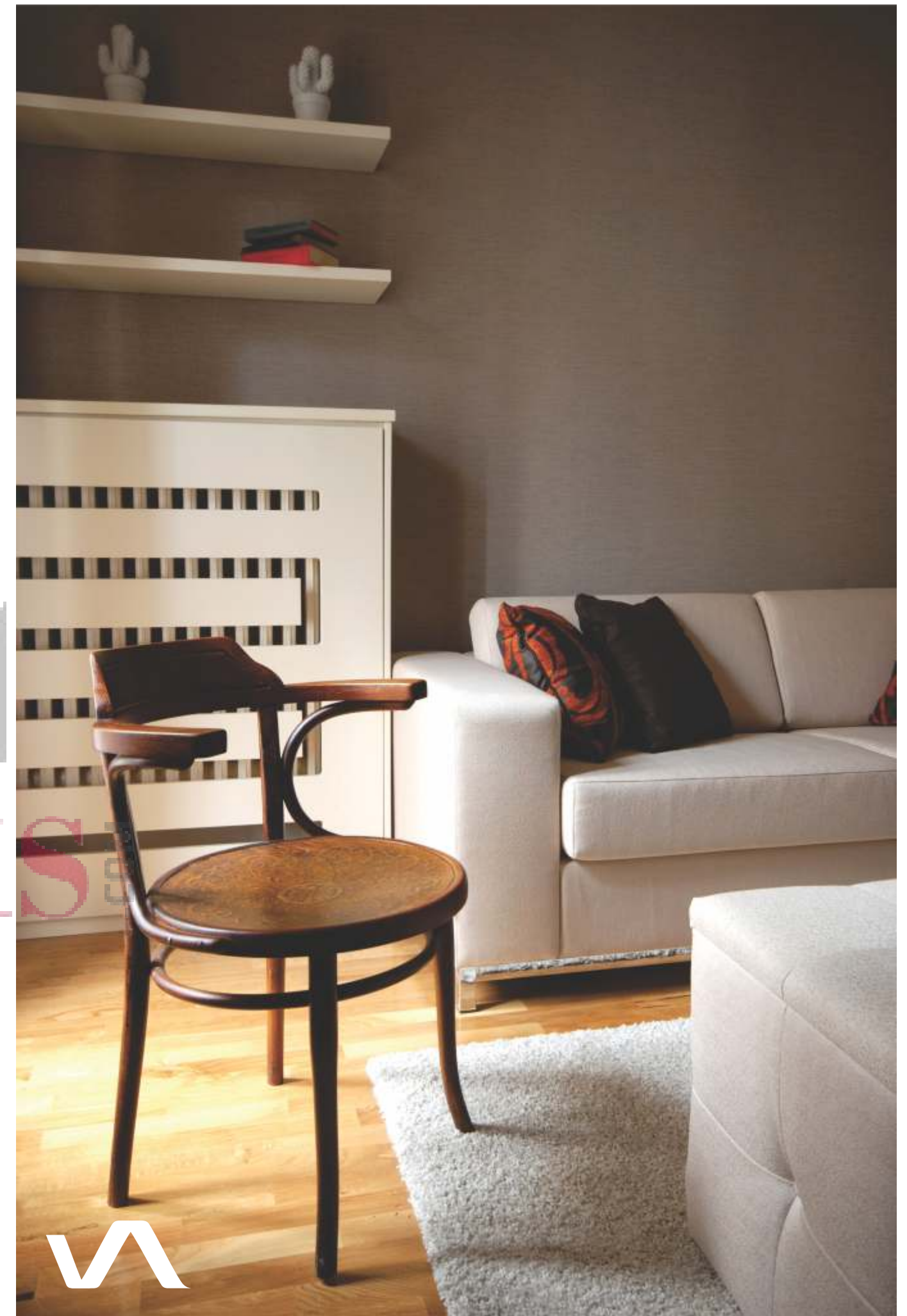
---



Every home at Victory Ace has been carefully designed by laying emphasis on the smallest of details. The homes have been laid out to minimize wastage of space and enhance ventilation. Modern fixtures are installed within each home, to turn them into havens of extreme comfort and style.

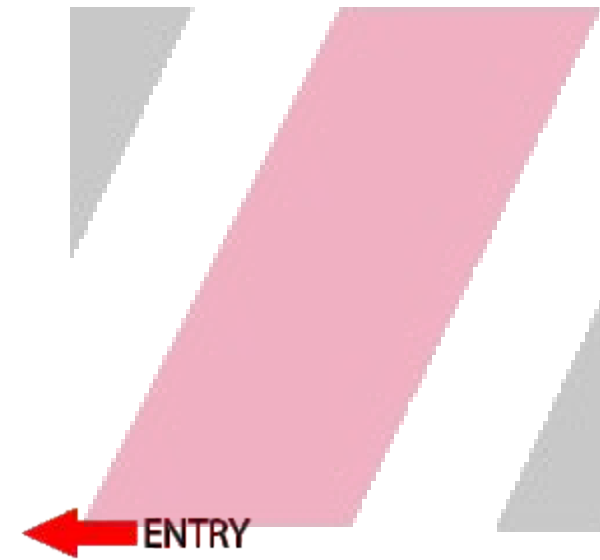
---

ZRICKS



Every home at Victory Ace has been carefully designed by laying emphasis on the smallest of details.

### 3 BHK + 2 TOILETS



ZRICKS



AREA = 1475 SQ.FT.



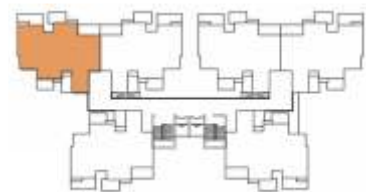


Every home at Victory Ace has been carefully designed by laying emphasis on the smallest of details.

### 3 BHK + 2 TOILETS

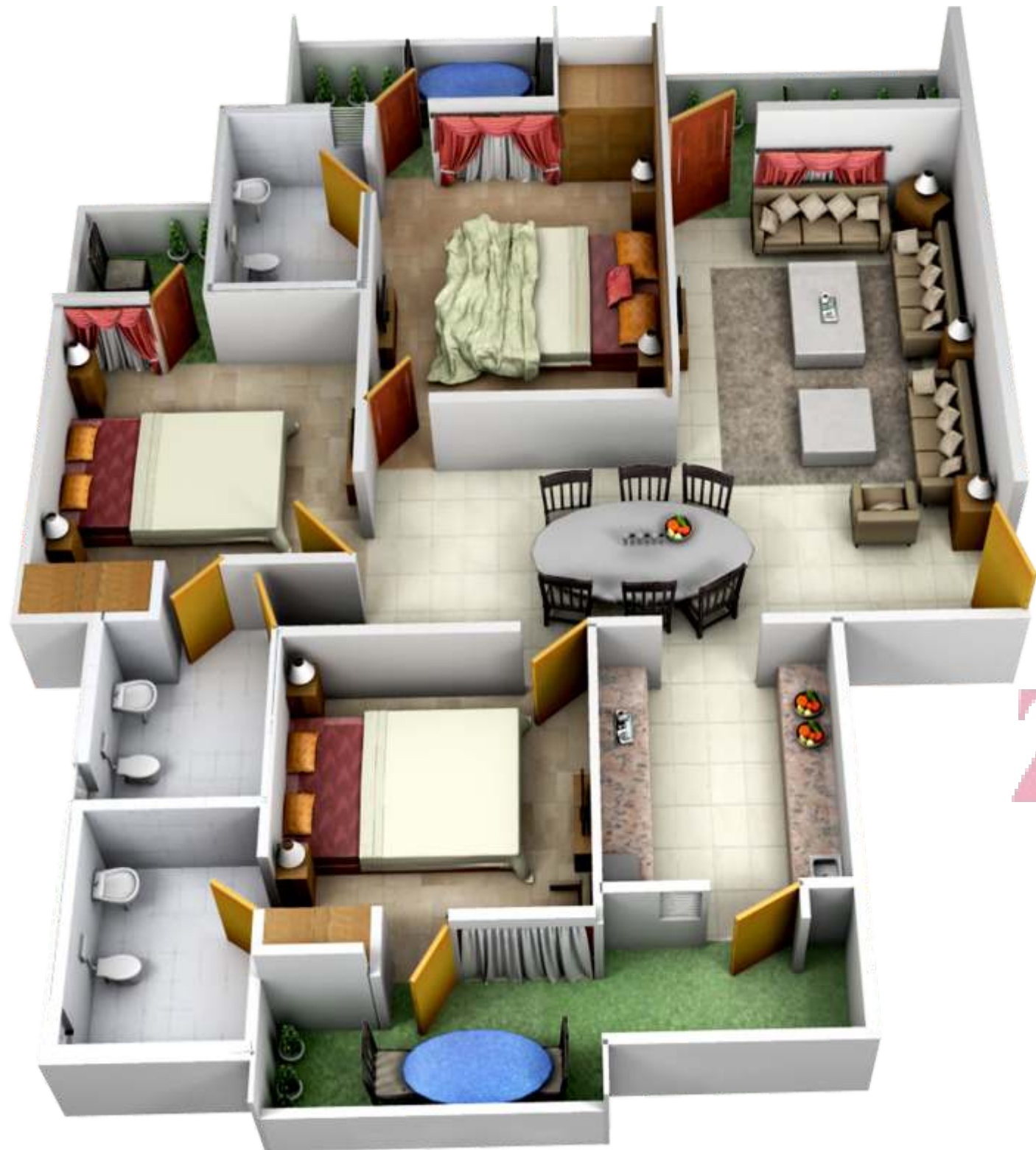


AREA = 1495 SQ.FT.



Every home at Victory Ace has been carefully designed by laying emphasis on the smallest of details.

**3 BHK + 3 TOILETS**



ZRICKS



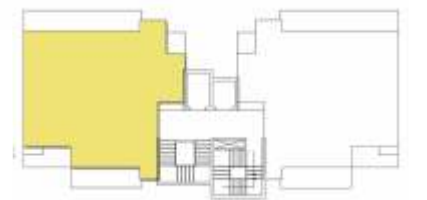
AREA = 1695 SQ.FT.

Every home at Victory Ace has been carefully designed by laying emphasis on the smallest of details.

**3 BHK + 3 TOILETS + Ser**



AREA = 1895 SQ.FT.



Every home at Victory Ace has been carefully designed by laying emphasis on the smallest of details.

**4 BHK + 4 TOILETS + Ser**



AREA = 2295SQ.FT.



1. MAIN ENTRY
2. RECREATION CLUB
3. SWIMMING POOL
4. KIDS POOL
5. POOL DECK
6. PARTY LAWN
7. PALM COURT
8. CENTRAL LAWN

9. JOGGING TRACK
10. KIDS PLAY AREA
11. SAND PIT
12. YOGA MEDITATION
13. HALF BASKET BALL COURT
14. WATER FOUNTAIN
15. RAMPS FOR BASEMENT
16. OPEN AIR THEATER

- 4 BHK + SERV.
- 3 BHK + SERV.
- 3 BHK + 3 TOI
- 3 BHK + 2 TOI



SITE PLAN

## SPECIFICATIONS

**STRUCTURE :-** Earthquake Resistant RCC Frame structure.

### LIVING & DINING:-

**Floor:** Marble Stone/ Vitrified Tiles.

**Walls:** Painted with pleasing shades of Distemper /Emulsion paint.

**Ceiling:** Painted with pleasing shades of Distemper / Emulsion paint.

**Air Conditioner:** Energy efficient Air Conditioner.

### BEDROOM:-

**Floor:** Vitrified Tile/ laminated wooden flooring.

**Walls:** Painted with pleasing shades of Distemper/ Emulsion paint

**Ceiling:** Painted with pleasing shades of Distemper/ Emulsion paint

**Air Conditioner:** Energy efficient Air Conditioner in each room.

**Wardrobe:** Modular type wardrobe.

### BALCONIES:-

**Floor:** Group 5 Tiles.

**Walls:** Painting with long elastic water repellent paint.

**Ceiling:** Painted with pleasing shades of Distemper / Emulsion paint.

**Railing:** MS railing with enamel paint.

### KITCHEN:-

**Floor:** Group 5 Tiles.

**Walls:** Ceramic/Glazed Tiles up to 2ft. height above counter level rest

Painted with pleasing shade of Distemper/Emulsion paint.

**Platform:** Granite counter with stainless steel sink.

**Cabinets:** Modular Kitchen with laminated finish with Accessories.

**Chimney & Hob:** SS Finish.

**Refrigerator :** Energy Efficient Refrigerator.

### TOILETS:-

**Floor:** Group 5 Tiles.

**Walls:** Ceramic Tiles up to 7"0" ceiling heights.

**Fitting & Fixture:** Excellent quality WC and Wash basin with single level Mixture with shower, CP brass fitting & provision for hot & cold water system.

### DOORS & WINDOWS:-

**Entrance Door:** Seasoned hardwood frames with both side teak finish flush doors.

**Internal/ External Door:** Flush Door Shutters with Paint/ Polish.

**Windows:** UPVC/ Aluminum.

### ELECTRICAL:-

Standby power of 1KVA for each apartment.

100% power backup for common area facilities.

Light and Fan in all Rooms.

Provision for exhaust fans in kitchen and toilets.

Television/ Telephone point in living room and all bedrooms.

Intercom facility from security cabin to each apartment.

Copper coated wiring. Provision for plug points in each kitchen, toilet, bedrooms & dining room.

ZRICKS

#### Disclaimer

This brochure depicts an imaginary concept. The information contained in the brochure is indicative. The developers reserve the right to modify any plan or amenity, without any prior notice. This brochure is not part of any offer or contract.



**ZRICKS** Address: **.COM**

**VICTORY INFRA PROJECTS PVT. LTD.**

**Corporate Office: 702-704, D Mall, Netaji Subhash Place,**

**Pitampura, New Delhi - 110034**

**Email: [info@victoryinfra.com](mailto:info@victoryinfra.com)**

**[www.victoryinfra.com](http://www.victoryinfra.com)**