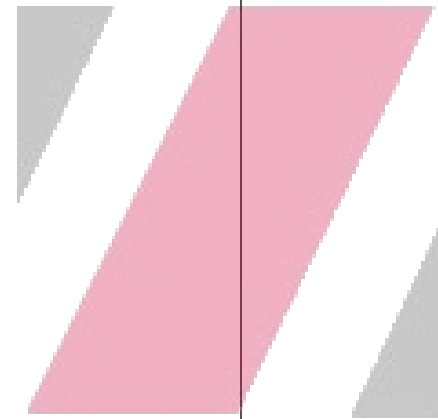




Trust Built on Performance



ZRICKS.COM



KLJ TOWN PLANNERS (P) LTD.

Marketing Office :
102-107, HOTELASHOK, DIPLOMATIC ENCLAVE, 50B, CHANAKYA PURI, NEW DELHI -110 021 (INDIA)
Tel. : (011) 2412 2880-86 Fax : (0091-11) 2412 2887
E-MAIL: sales@kljtowndplanners.com
WEBSITE : www.kljtownplanners.com

Registered Office :
KLJ HOUSE, 63 RAMA MARG, NEW DELHI-110 015 (INDIA)
TEL : (011) 2545 9706-07-08, 4142 7427-28-29
FAX: (0091-11) 2593 5730

NOTE : This brochure is purely conceptual and is not a legal offering. Further, the promoters/ Architects reserve the right to add/ delete any details/ specifications/ elevations mentioned. If, so warranted by the circumstances.

— KLJ —
greens
0 KM FROM NATURE

Faridabad's Finest High-rise Residential

Group Housing Project



**LA-VISTA,
FARIDABAD**

Welcome to your lifetime retreat in a faraway land. Welcome to stunning Spain. Right here in the heart of Faridabad, NCR's hottest next destination. Presenting LA-VISTA Premium 3 & 4 BR Apartments, Based on Spanish Architecture, Air-Conditioned Lobby, Living Room with Garden, Exclusive Puja Room, Experience a true international lifestyle. Experience life in its most luxurious form. State of art modular kitchens. A wi-fi environment to enhance the beauty of the natural environment. Experience the good life amidst a world of luxury. Swimming pool, Executive club with spa facility, Hi tech gymnasium, Lush green exterior, Classy interiors, Experience the convenience of strategic location.

Sold Out

**PLATINUM PLUS,
FARIDABAD**

Welcome to Platinum Plus, a quality housing at affordable price. Come and enjoy the convenience of strategic location. An exceptionally designed structure with more usable area/spacious layout, ample parking space, two high speed lifts in every tower and well equipped with modern days facilities. We always value your money.



Sold Out

**PLATINUM FLOORS,
FARIDABAD**



At Platinum, every floor is designed to provide a lifestyle that speaks for itself, yet is close to nature. Beside its contemporary design, it also values economic living and is constructed keeping in mind every modern facility available and also your budget. We understand your need and the value of your hard earned money as well.

**KLJ HEIGHTS,
BAHADURGARH**



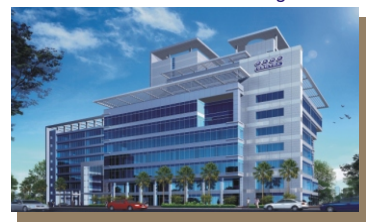
In the fast developing Haryana, a well conceived modern Housing Project with all facilities is taking shape. This Group Housing project will have 2,3 and 4 bedroom options, power back-up and earthquake resistant structure. Apart from well-manicured greens, the housing project will have a club house, swimming pool and jogging track. So, get ready for the lifestyle you've always wanted. Get ready to be at KLJ Heights.



**NETWORK CITY,
GREATER NOIDA**

NETWORK CITY is the answer to ever shrinking commercial space in Greater Noida. The well designed IT Centre with strong passionate commitments brings numerous modern facilitated offices contributing to the beauty and magic of the city. Leading multinational companies in India demand for high rise IT Centres in which the KLJ would be a flag bearer.

**PARK CENTRA,
GURGAON**



Park Centra is a premium commercial complex for IT and IT enabled companies. Park Centra would host large format IT and IT enabled companies from the field of BPO, Software Development, Contact Centres and IT support. Park Centra is just ahead of Signature Tower, opposite 32nd Milestone, NH-8 Gurgaon. One of the largest building on National highway. Park Centra would be a self sufficient complex with Broadband connectivity, Leisure Club, Integrated facilities like Banks, ATMs, Restaurants, Business Center, 24 hour cafe's and three tier high security system for complete access control.

**SHOP IN PARK - NORTH,
DELHI**



North Delhi is all set to experience the delights of an international shopping experience. Located in the posh residential B-Block of Shalimar Bagh, Shop'in Park North is set to give a new definition to brand visibility. With real estate rates matching and even exceeding those of South Delhi, it's clear that the need of the hour of North Delhi's shoppers is a world-class mall that matches their tastes, aspirations and high disposable income. Anchored by India bull Modernstore, a shopping approx. 80,000 square feet over four floors, the mall is designed to offer the entire family variety and quality that is unmatched.

**PARK CENTRE,
NOIDA**



The IT park is located in the developed Sector-62 of Noida. It will be an IT Complex with approx. 5,00,000 sq. ft. space with efficient floor plans. It will be a state of art Green Building with latest high-tech features like Wi- Fi enabled towers, Earth Quake Resistant RCC Structure, 100 % power back up, Multi Level Parking with international style landscaping. It shall also have 24x7x365 days of security & 24 hrs. CCTV surveillance & shall have Integrated Amenities.



**KLJ TOWER,
NORTH DELHI**

The upcoming landmark in the Northern part of Delhi will be The New Center for Trade & Business. With it's prime and strategic location on the Ring Road and in the immediate vicinity of Pitampura, Punjabi Bagh, Shalimar Bagh, Ashok Vihar and Rohini it is sure to become the Commercial Hub of the North Delhi. The centrally air-conditioned center will be equipped with all the latest facilities, including 100% power backup. The tower will also have state of the art elevators and high-speed lifts up till 12th floor. The well-planned center will have three floors dedicated to shopping, while other ten floors will be for tastefully designed corporate offices. Convenience is the major asset of the center with World-class maintenance & ample MCD parking area. No longer will you have to face the trouble of spending hour's trying to park. All in all it will be the perfect combination of business and pleasure and will be the never Center of North Delhi-The KLJ Tower North.



FOUR BED ROOM + SERVANT UNIT SUPER AREA : 2141 SQ. FT.



ZRICKS

ABOUT GROUP

We hereby introduce KLJ Group of Industries, founded by Sh. K.L.Jain, back in 1968, is one of the most respected and renowned business houses in India with an annual turnover Rs. 15000 million. Beside this, the group has an impressive network of manufacturing plants all over the country and consist of many entities engaged in the manufacture and trade of Plasticizers and Specialized Chemicals apart from being in finance and real estate development.

ABOUT PROJECT

KLJ GREENS Group Housing Colony in Sector 77, Village Neemka, Faridabad, Haryana, is Faridabad's finest high rise Residential Group Housing Project. Spread across 51 acres, the breathing space promises you over 40 acres of lush green. A welcoming environment that leaves the stress of the city far behind and a sanctuary away from the hustle and bustle.

It's much closer from heart of Delhi, CP only 40 minutes to be precise. It's even close to South Delhi & Express Highway(NH - 2)

LOCATION FEATURES

4 km from Proposed Metro Station, NH - 2(Sector - 12)
14 km from Badarpur Border.
24 km from Ashram.
30 km from Connaught Place.
32 km from Gurgaon.
Connectivity from Proposed Express Highway from Noida to Agra.
Upcoming Malls/Complexes in close proximity.

POWER SUPPLY

100 % Power Backup
2 B/Rs + Study - 5 KVA
3 B/Rs + S/R - 5 KVA
4 B/Rs + S/R - 5 KVA

WATER SUPPLY

24 hours water supply
Water treatment plant and storage facility
Basic supply from HUDA & further distribution by Company within the complex.

ROAD NETWORK

Arterial road to be 24 mtrs. wide
HUDA Sector roads 30, 45, 60 mtrs wide

PUBLIC HEALTH

Adequate health services in the shape of hospitals & nursing homes
 ▲ One of the largest hospitals in the NCR region.
 ▲ Prominent Hospitals in the close vicinity like:
 Escorts Fortis Hospital
 Central Havell's Hospital
 Sunflag Hospital

EDUCATION FACILITIES

Schools, Business Schools, Nursery Schools & Creches.
Very famous & renowned schools in close vicinity like:
 ▲ Apeejay School, Sector - 15
 ▲ Modern DPS, Sector - 87
 ▲ GD Goenka World School, Sector - 19
 ▲ Manav Rachna Educational Institute - Surajkund Road
 ▲ Aravali School - Surajkund Road
 ▲ Vidya Sanskar International School
 ▲ Sudan Rastogi Dental College affiliated to MDU
 ▲ Management & Law College affiliated to Govt.
 ▲ Lingia's Engineering College

SHOPPING & ENTERTAINMENT FACILITIES

World Class shopping malls, retail outlets, food courts, cineplex's etc.
to be developed by KLJ within the township & also in closed vicinity like:
 ▲ SRS Mall - Sector 12
 ▲ City Mall - Main NH2
 ▲ Mall Manhattan - Main NH2
 ▲ Ansal's Crown Plaza - Sector 15A
 ▲ The Next Door - Sector 76(U Block)

SECURITY

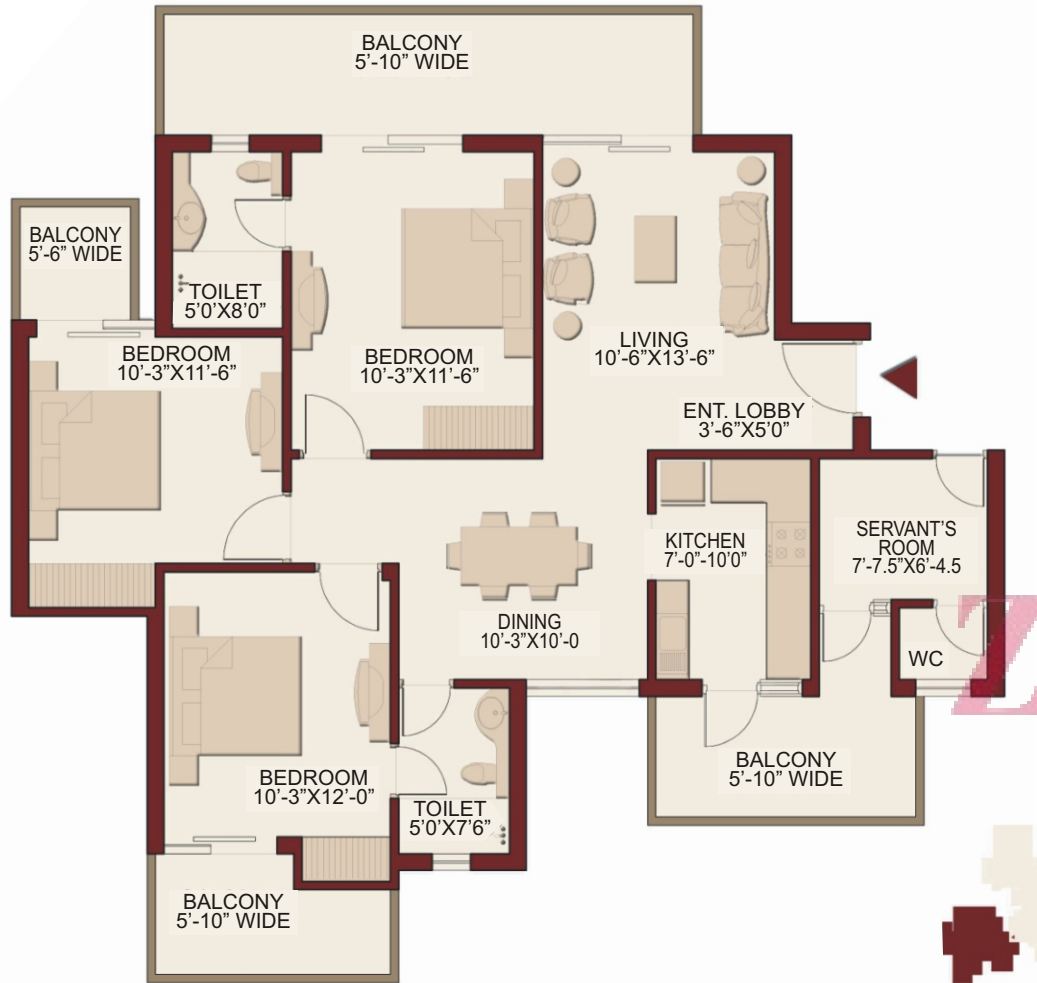
▲ 24x7 Security - Petrol with modern communication system
 ▲ Gated development with fencing all around the township
 ▲ Security within the housing complex



THREE BED ROOM + SERVANT UNIT SUPER AREA : 1602 SQ. FT.



Expect all the good things in life at KLJ Greens



THREE BED ROOM + SERVANT UNIT SUPER AREA : 1602 SQ. FT.

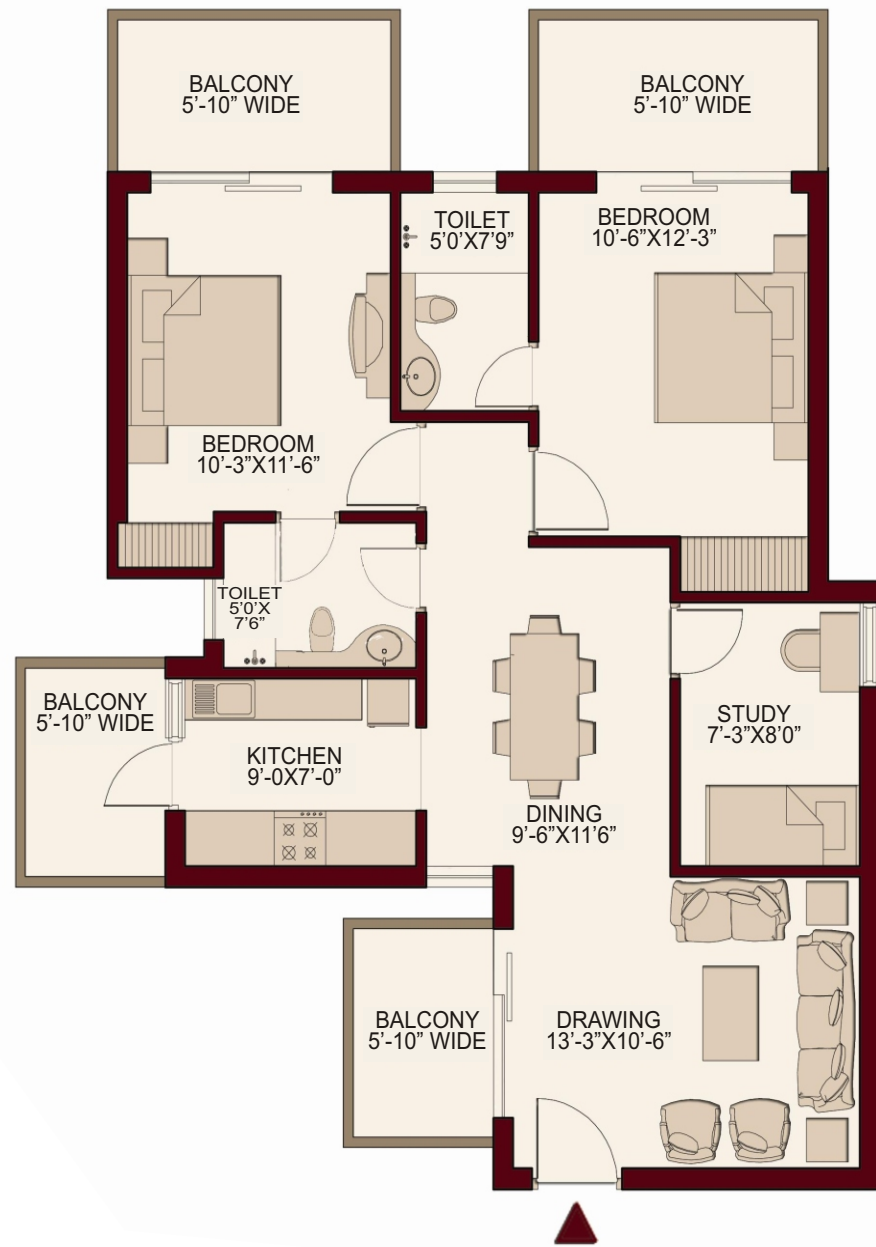


There is a whole gamut of amenities to make sure that you have a conducive environment to play, read, shop, relax, work, swim, party, meditate, pump iron or do just about anything. Take a look at the list and you'll agree.



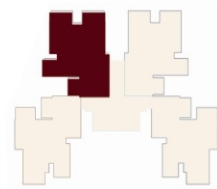
- Vaastu Compliant
- Majestic Entrance with landscaping and fountains
- 2-3-4 Bedroom Apartments / Penthouses
- Dedicated Car Park for each Apartment
- Nursery School
- Swings & Sand Pits For Kids
- Club with Swimming Pool
- Billiards
- Steam, Sauna & Massage
- Healthcare Center
- Power Back-up
- Community Hall
- Convenient Shops / Daily Need Shops
- Earthquake Resistant RCC Frame Structure
- Fire Safety Compliant
- Round The Clock Security
- Separate Rooms, Toilets For Drivers / Guards
- High Speed Elevators
- Fitness Centers
- Clubhouse
- Concierge Services
- Child Care
- On-site ATM
- Premium Dispensaries
- Security Systems
- Elevators
- Business Centers
- Conference Halls
- Creche
- Jogging Trails
- Putting Greens
- Rock Climbing Wall
- Equipped Kid's Playground
- Aerobics Room
- Telephone with ISDN Line
- Maintenance Service
- Children's Activities
- High Speed Internet
- Senior Citizen's Activities
- Neighbourhood Watch

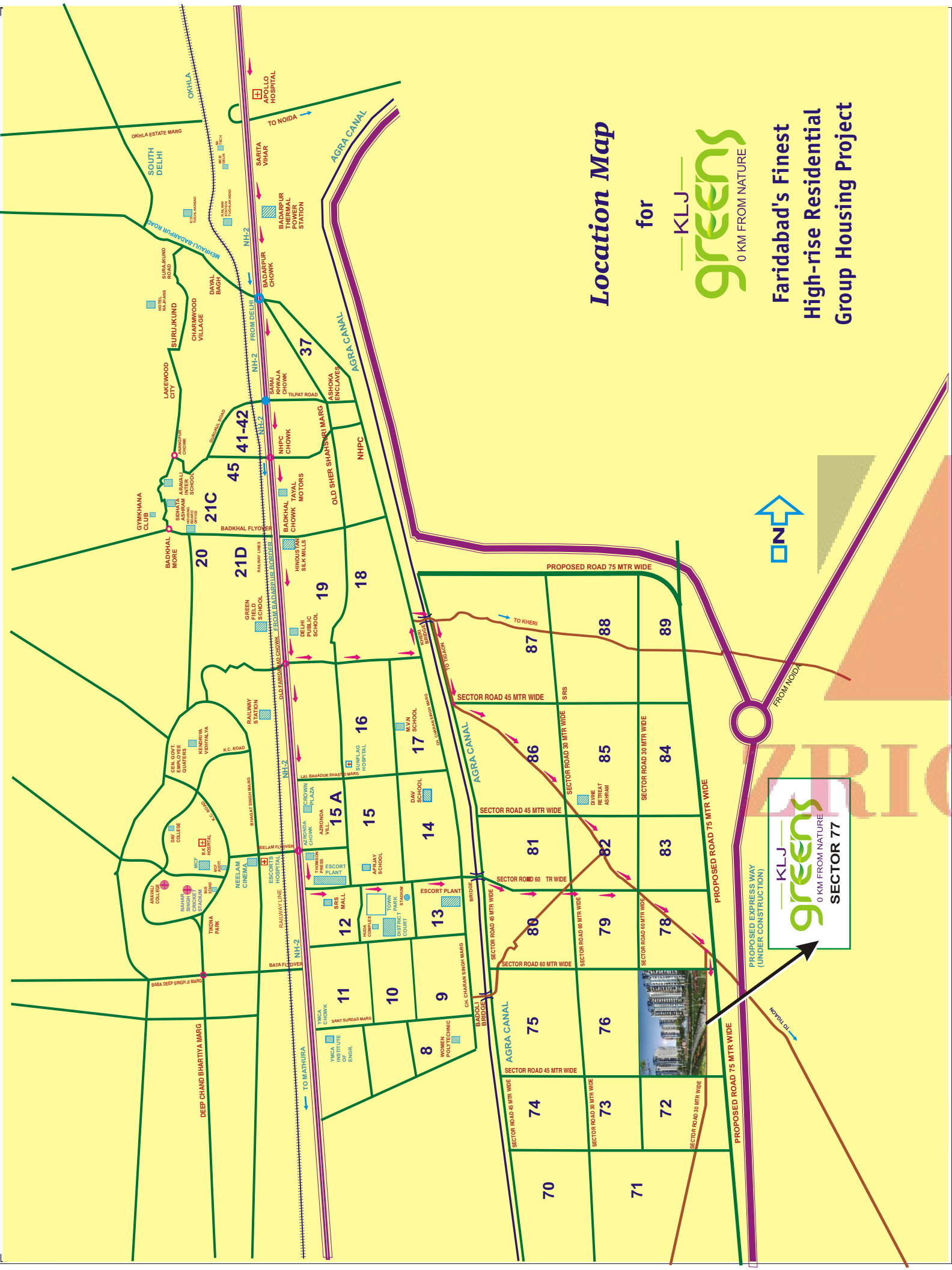




TWO BED ROOM + STUDY UNIT SUPER AREA : 1279 SQ. FT.

ZRICK





TWO BED ROOM + STUDY UNIT SUPER AREA : 1279 SQ. FT.





— KLJ —
greens
0 KM FROM NATURE

Visual shown is an artistic impression not the actual picture