

MASTER PLAN



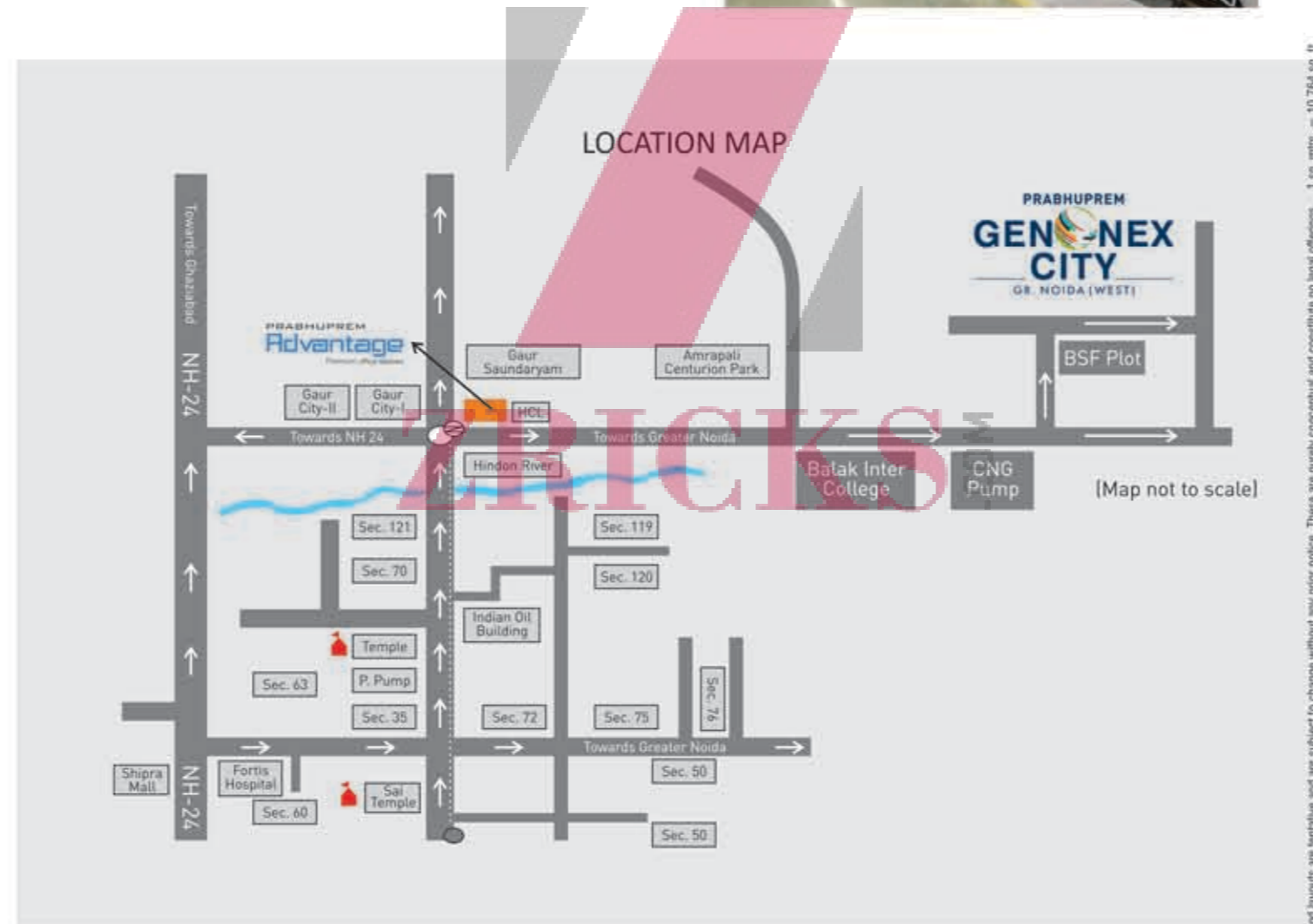
Disclaimer: All the above features and layouts are tentative and are subject to change without any prior notice. These are purely conceptual and constitute no legal offerings. 1 sq. mtrs. = 10.764 sq. ft.



LOCATION ADVANTAGES

With growth of the IT/ITES sector, the quick connectivity of Gr. Noida to Noida and Delhi enjoys the growth in infrastructure and capital appreciation day by day.

- The site will be accessible through wide roads.
 - Five minute drive from NH-24.
- One minute drive from proposed metro.
- Two minutes drive from Central Noida.
 - Fully connected to public transport.
- The developed location next to BSF Plot.



Corp Office: H - 190, First Floor, Sec 63, Noida
 W: www.prabhupremgroup.com

Disclaimer: All the above features and layouts are tentative and are subject to change without any prior notice. These are purely conceptual and constitute no legal offerings. 1 sq. mtrs. = 10.764 sq. ft.

NEXT GEN OF LIVING & BUSINESS DESTINATION



ABOUT THE GROUP

In the present era of rapid globalization, prolific demands for quality, innovative and worthy lifestyle are soaring high. In order to cater to these requirements, Prabhuprem Group has emerged as one of the renowned names in realty that has been creating milestones that provide eco friendly, energy efficient and quality infrastructure. With abounded professionals, labour force, path breaking philosophies and innovative ideas, Prabhuprem Group is constantly working to meet the expectations of its clients.

Ever since its inception, the group is building spaces based on the aspects of safety standards, water harvesting and environment management. In the past, the Group has undertaken many contractual projects including colleges, hotels and motels and now, it is all set to bring a structural marvel which is going to be a generation next city for the people of Delhi NCR.



GET READY FOR A NEW & REWARDING FUTURE



The exclusivity of GenNex City lies in the miniature setting of wonders of the world in its premises. There are umpteen breathtaking and picturesque marvels of the world. While it's difficult to visit every wonder, GenNex City has created a mini adaptation of four famous wonders of the world including Taj Mahal, Eiffel Tower, the Great Pyramid of Giza and Statue of Liberty. Standing at GenNex City, you can experience surreal world with some of the best landmarks surrounding you and that too at a single location.

MINI WONDERS OF GEN NEX CITY

Smart Office Spaces

GenNex City offers Smart Office Spaces customized for Start-ups, mobile professionals, free lancers, work from home entrepreneurs, representative offices and everyone who is looking for a fully functional working space in multiple options from 135sq.ft. to 270sq.ft.

TYPE-C



SUPER AREA=135 SQ. FT.

TYPE-D



SUPER AREA=270 SQ. FT.



IT-4 CLUSTER PLAN

OPTION-1



SUPER AREA=525 SQ. FT.

OPTION-2



SUPER AREA=525 SQ. FT.



IT-5A CLUSTER PLAN

Cyber Suites

Meeting your premium lifestyle, GenNex City offers Cyber Suites of 525sq. ft. in multiple options, perfectly designed to provide you an unmatched combination of personalized services and inviting atmosphere.

Residential Apartments

The luxurious 1 & 2 BHK residential apartments at Prabhuprem GenNex City are perfect to offer a lifestyle of plush comforts and serene surroundings in the heart of Greater Noida(W). These spacious homes comprise quality fittings and impressive features that create an aura of opulence within these homes.



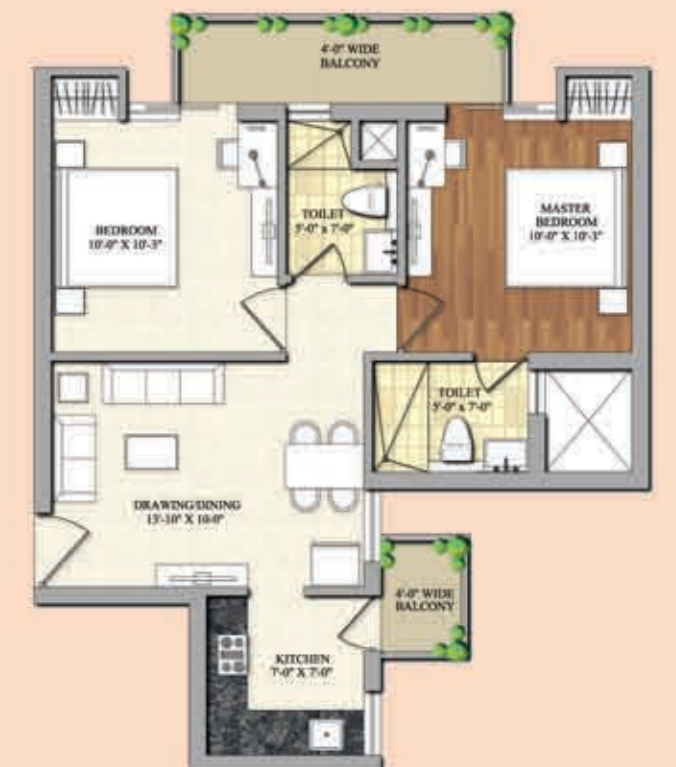
SUPER AREA=550 SQ. FT.

1BHK UNIT



1BHK RESIDENTIAL BLOCK

2BHK UNIT



SUPER AREA=900 SQ. FT.



2BHK RESIDENTIAL BLOCK