



GREEN  
AVENUE

NATURALLY YOURS



ZBRICKS.COM

LIVE AMONGST THE GREENS



A HOME THAT  
WAS MEANT FOR YOU.  
**NATURALLY,  
ITS YOURS.**

Born out of the idea of living green and living well, Green Avenue is an amalgamation of luxury and sustainability. A host of infrastructural facilities that offer everyday comfort, and splendid options for entertainment and rejuvenation at the Grand Clubhouse, are the makings of a world-class lifestyle in this place you call 'home'.

Green Avenue is a 3 sides open corner plot and is also directly adjacent to 130 m wide inter-city ring road connecting Greater Noida to Noida and Ghaziabad.

ZRIIC



# A PEEK INSIDE GREEN AVENUE

## PROJECT FEATURES

- Rain-water harvesting
- Certified earthquake resistant structure
- 24 hour intercom enable security services
- Covered and standard car parking
- Natural light in basement stilt
- 24 hour hot water and power supply

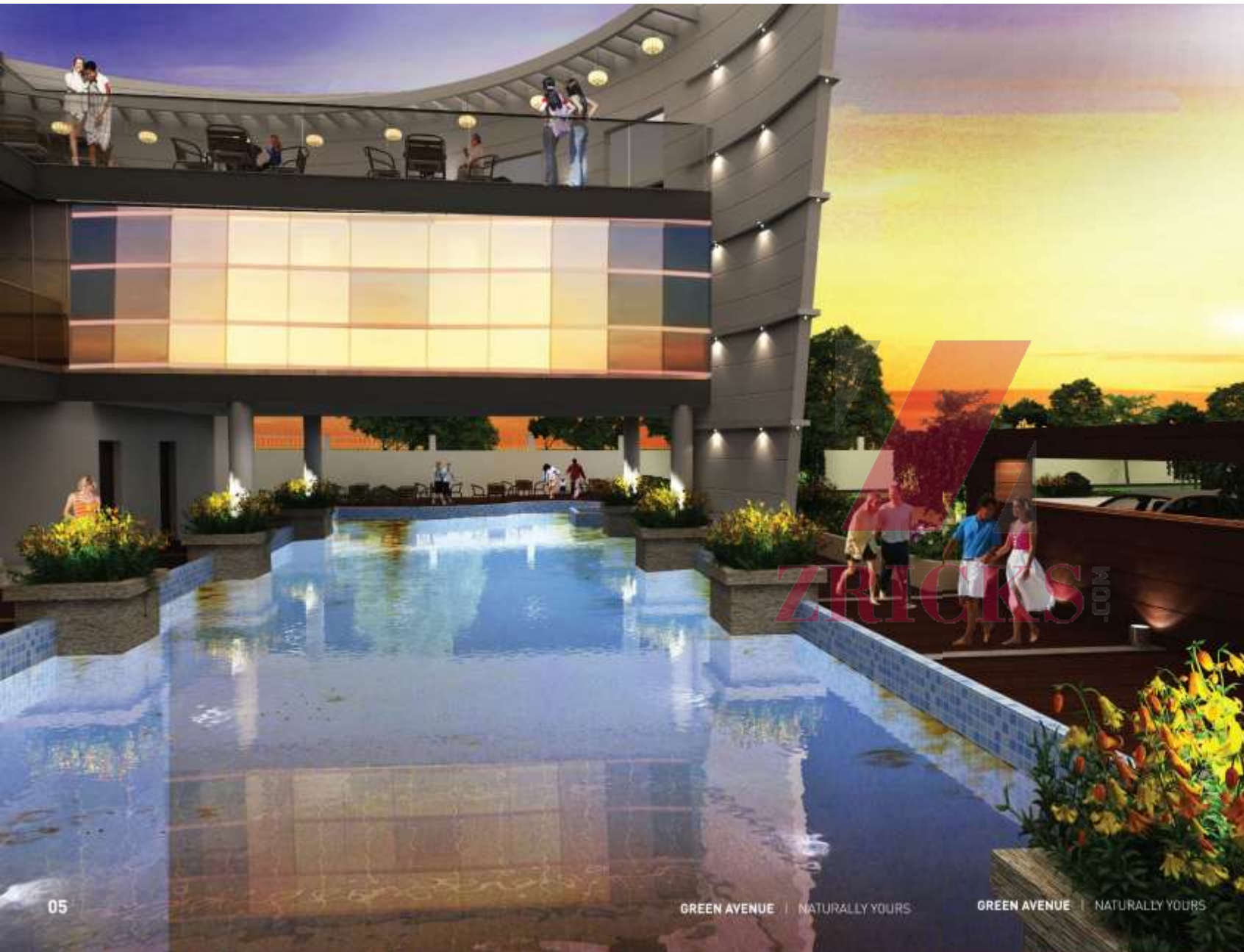
## PROJECT COMPOSITION

- Total area - 8.5 acres
- 9 Towers
- 8 Residential Towers
- 1 Commercial Tower: Greenotel, retail space and serviced apartments together

## LANDSCAPING

- Based on the principle that natural light and playing in the sun are important
- 75% of the project is covered with greenery on all four sides
- 85000 sqft landscaped central park with acupressure walks, children's play areas, special aroma gardens and evening gardens





# The Grand Club

**The Grand Club**, spread over 50,000 sqft is the crowning glory of Green Avenue. The tropical swimming pool, spa, and salon bring you a taste of the good life.

- Tropical swimming pool
- World class gym
- Open air lounge, and restaurant on terrace
- Jacuzzi and aroma massage therapy spa
- Movie theatre
- Cards room
- Banquet area with a capacity for 300 people

# GREENOTEL



## SIZE 390 SQ.FT.

- Air conditioner
- Mini Refrigerator
- LCD with cable connection
- RO in kitchen
- Hot plate (Induction cooker)
- Juicer mixer/ Toaster & microwave
- Double bed with mattresses and pillows
- Curtain with curtain rods
- Towel rack in the bathroom
- Geyser
- Coffee table with chair
- Equipped kitchen
- Study table with chairs
- Wooden cupboards

## SIZE 490 SQ.FT. (1 BHK)

- Air conditioner
- Mini Refrigerator
- LCD with cable connection
- RO in kitchen
- Hot plate (Induction cooker)
- Juicer mixer/ Toaster & microwave
- Double bed with mattresses and pillows
- Curtain with curtain rods
- Towel rack in the bathroom
- Geyser
- Study table with chair
- Equipped kitchen
- Dining table with chairs
- Wooden cupboards

## SIZE 790 SQ.FT.

- 2 Air conditioners
- Mini refrigerator
- 2 LCD's with cable connection
- RO in the kitchen
- Equipped kitchen
- Hot Plate (Induction cooker)
- Juicer Mixer/ Toaster & microwave
- Double bed with mattresses and pillows
- Curtain with curtain rods
- Towel rack in the bathroom
- Centre table
- Geyser
- 4 seater sofa with corner table
- Study table with chair
- 4 seater dining table with chair
- Wooden cupboards



ZRICKS

# SITE LAYOUT



	2BHK + 2T - 995 SQFT
	3BHK + 2T - 1295 SQFT
	3BHK + 3T - 1595 SQFT
	3BHK + 3T +SER. -1825 SQFT
	4BHK + 4T +STORE +SER. - 2350 SQFT



# PROJECT SPECIFICATIONS



**STRUCTURE:** Earthquake resistant RCC framed structure

## FLOORING

**Living/Dinning Room:** Vitrified tiles

**Master bedroom:** Wooden flooring

**Bedroom:** Vitrified tiles

**Kitchen:** Ceramic tiles

**Toilet:** Ceramic tiles

**Balconies:** Ceramic tiles

**Lift lobby:** Combination of paint and stone/tiles

## PAINT

**Internal Wall:** Plastered & painted by OBD

**External Wall:** Exterior paint

**Doors:** Synthetic enamel paint

## DOORS

Painted flush door shutter with hardwood frame

## WINDOWS & EXTERNAL DOORS

Powder coated aluminium glazing

## KITCHEN

**Dado:** Ceramic tiles upto 7' height

**Fittings:** Sanitary fixtures & CP fittings

## ELECTRICALS

Copper wiring in concealed conduits, modular switches.

Power Back up

24x7 Power back up for essential services and common areas

Lift

Passengers elevators in each tower

Communications

Telephone point in living room and master bedroom

## OVERALL

- A green building project
- Natural light in basement/stilt
- Adjacent to 130 mtr wide road.
- Corner plot.
- Certified earthquake resistant structure as per IS codes of practice
- Lifts by KONE/ Seimens or equivalent.
- 24 Hrs water supply in bathroom.
- Covered & open reserved car parking on payment basis
- Parks, children play area, DAT, Acupressure walk, aroma garden, evening gardens.
- WIFI enabled complex.
- Only 25% covered area & 75% open space
- Rain water harvesting.
- Plumbing done with CPVC pipes to avoid corrosions.
- Podium Parking with landscaped gardens.

## GRAND CLUB

- Spread over- 50000 sq.ft.
- Tropical swimming pools with open/covered area.
- Spa, steam, sauna, Jacuzzi, rain dance and designer wedding pool.
- Pool facing gymnasium.
- Yoga training.
- Salon & massage parlour.
- Lawn tennis, table tennis, half basket ball, golf putting.
- Card room & billiards room.
- Coffee shop & restaurant
- Banquet for 300 pax.
- Open party lawn for 300 pax.
- Lounge terrace party area for 100 pax.
- Guest rooms.
- Business centre with conference facility.

## COUNTRYSIDE

- 85000 sq.ft. large central green raised landscape over podium.
- Open air theatre for cultural activities.
- Jogging & walking track.
- Parks, children play area.
- Sports & recreation.
- Acupressure walk
- Evening garden.
- Fountain
- Meditation with aroma garden.
- Skating ring, tennis court.
- Chip & put golf course

ZRICKS

# TYPICAL FLOOR PLAN

## ROSEWOOD & OAKWOOD

2350 SQFT

4 BHK + 5T + Pooja  
+ Servant Room



GREEN AVENUE | NATURALLY YOURS

## ROSEWOOD & OAKWOOD

1825 SQFT

3 BHK + 4T + Servant Room



GREEN AVENUE | NATURALLY YOURS



**LOTUS & ORCHID**

**1595 SQFT**

3 BHK + 3T



**ORCHID, TULIP, IRIS  
CASPIA, BEETAL & LOTUS**

**1295 SQFT**

3 BHK + 2T



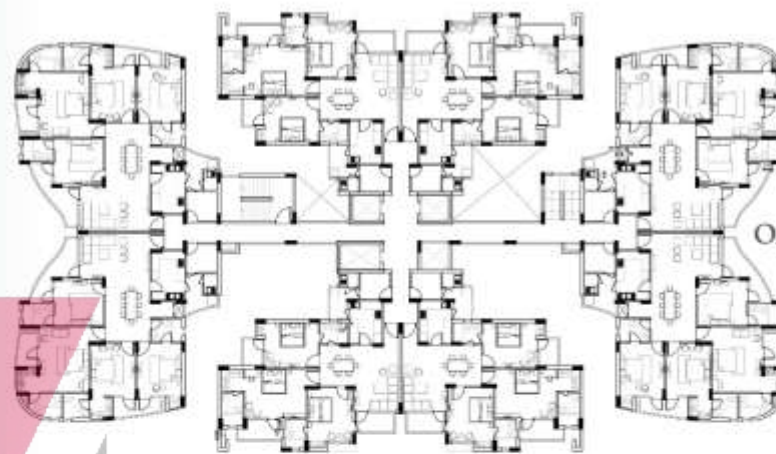
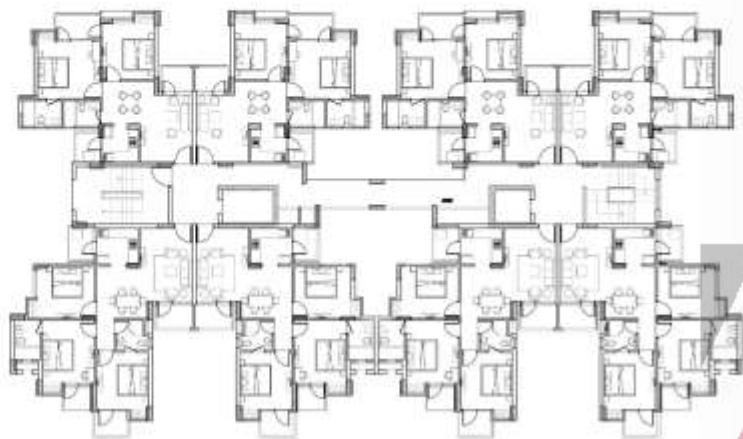
**TULIP, IRIS  
CASPIA & BEETAL**

**995 SQFT**

2 BHK + 2T

## CLUSTER PLANS

CASPIA & IRIS TOWER



OAKWOOD & ROSEWOOD TOWER



LOTUS & ORCHID TOWER

ZRICKS.COM

TULIP & BEETEL TOWER



# LOCATION MAP

It is proven that wherever there has been a Formula -1 racing track progress, prosperity and world-class infrastructure has followed. Some of the initiatives that are already underway are:

**500 METERS FROM PROPOSED METRO LINE**

**KNOWLEDGE PARK (WITH UNIVERSITIES)**

**NIGHT SAFARI**



MAP NOT TO SCALE



CORPORATE OFFICE: B-21, 22, Sector-16, Noida (U.P.) | SITE OFFICE: HRA - 10, Surajpur, Site - C, Greater Noida | CALL: 0120 3006500  
[www.airwil.in](http://www.airwil.in)