

HIGHLIGHTS

- Adequate Basement & Surfaced Parking.
- Security surveillance with CCTV, Intercom Facilities & Panic Alarm Button in Master Bedroom.
- Sprinklers for fire Safety in common area.
- Sprawling Green landscape Courts with Sit-out Spaces & Jogging Track.
- Separate Children's Play area with Swings, Slides & Climbing Fences.
- Club with Indoor Swimming Pool, Library Room, Entertainment & Video Game Room, Dance / Yoga Room.
- High standard Gymnasium, Table Tennis, Billiards/Pool Table, Badminton Court (Outdoor).
- Community space / Party Hall with Pantry, Meeting Room & Terrace for Party Area.
- Dual High Speed Lifts for every apartment.
- Adequate power Back UP

SPECIFICATIONS

- Wooden Laminated Flooring in Master Bedroom and Wooden cupboard in all Bedrooms.
- Vitrified Tiles / Natural Stone / Designer Flooring.
- Modular Kitchen with chimney & R.O. Unit.
- UPVC / Aluminum Powder coated Outer Doors & Window with Clear Frosted Glass.
- Modular Electrical Switches with Light & Fans Fixtures.
- Fully Finished Apartment with P.O.P. Punning and Acrylic Emulsion Paint and Feature Coloring in kids rooms.
- Provision for Hot & Cold water in all toilets with standard fittings & Fixtures.

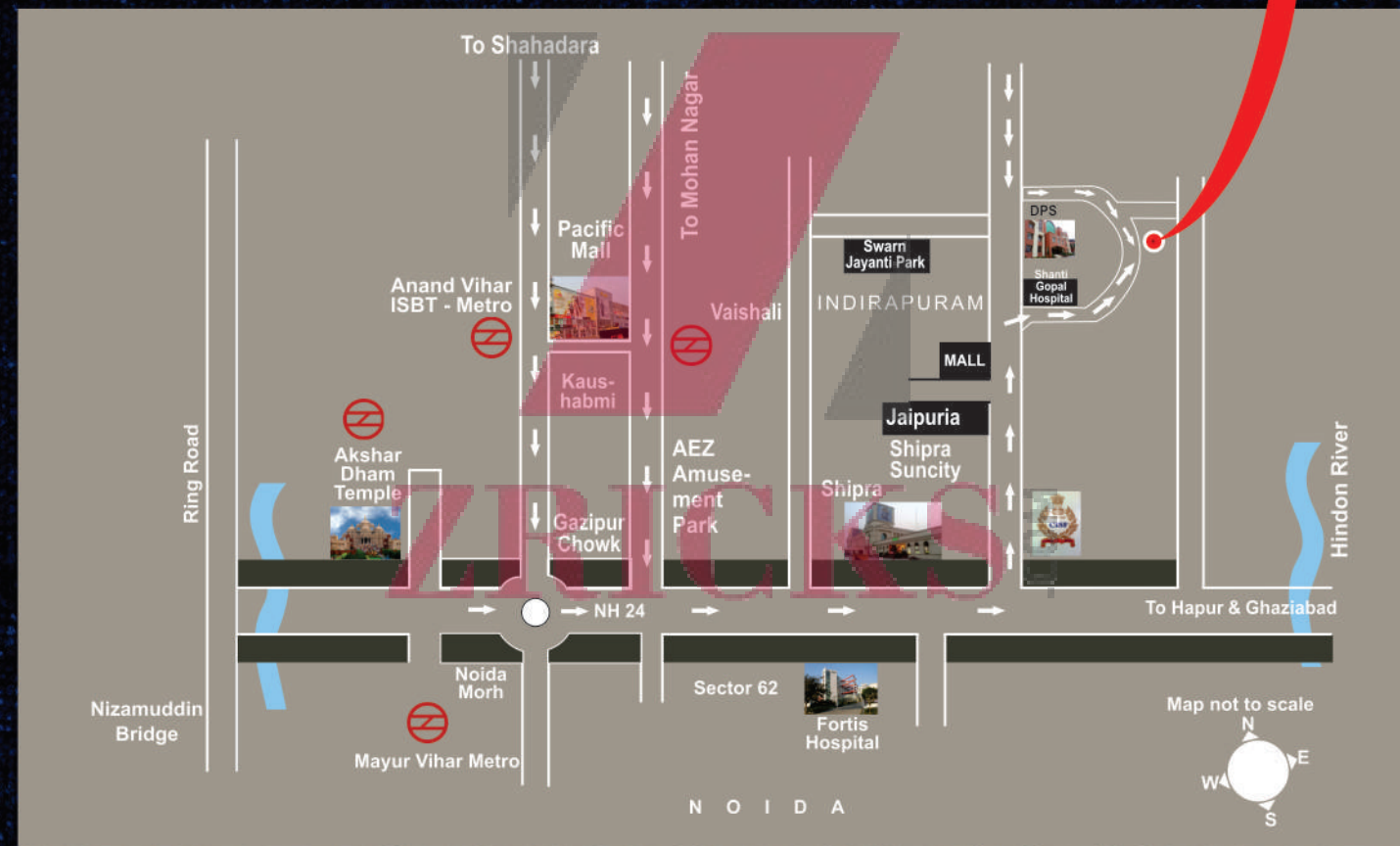
PROXIMITY TO

- DPS, Cambridge, St. Francis, St. Thomas, JKG schools.
- Shipra Mall, Aditya Mall, Jaipuria Mall.
- FORTIS Hospital, Shanti Gopal Hospital, Pushpanjali Crosslay
- Swarn Jayanti Park of 25 Acre.

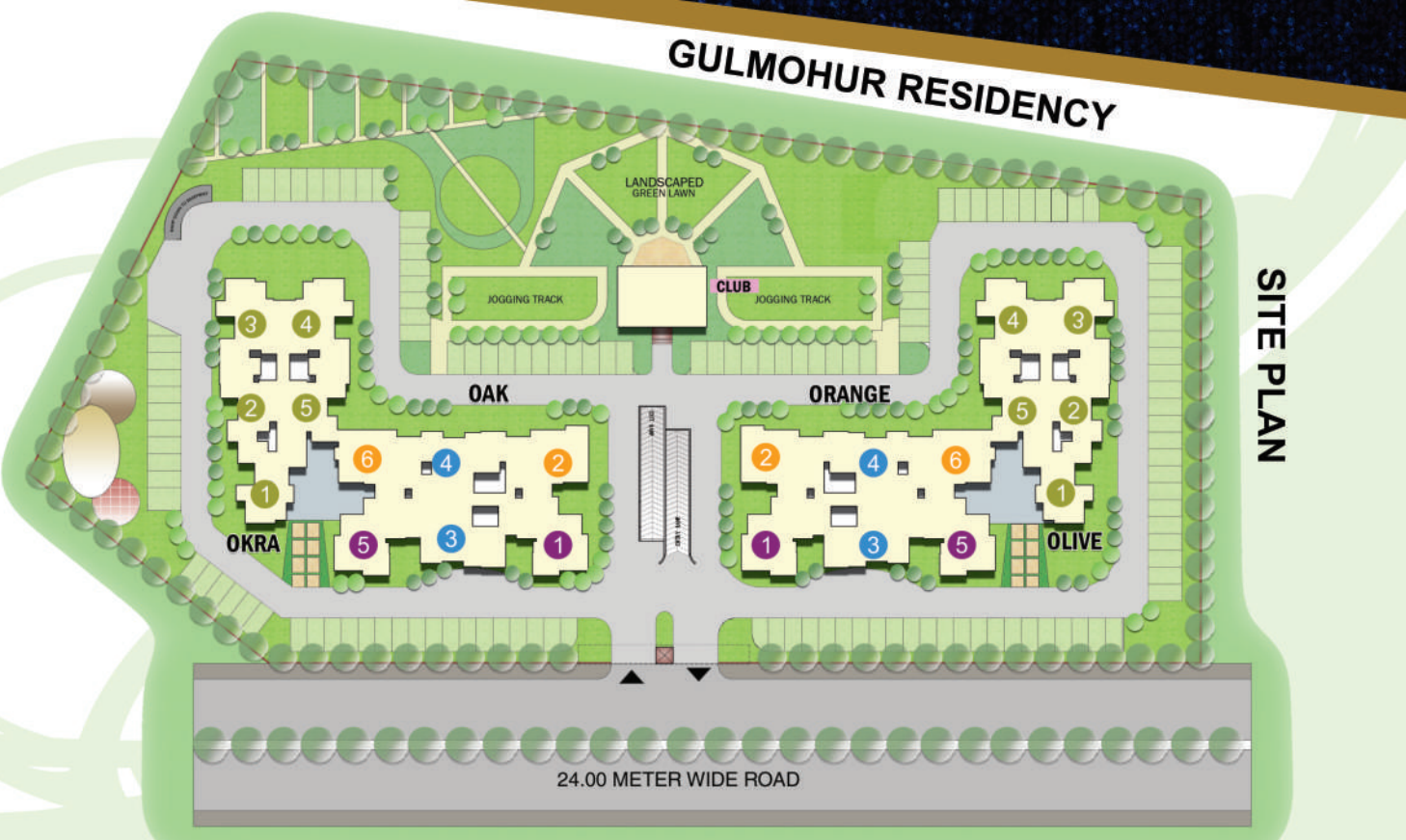


Location Map

- 1 KM form Noida
- 3 KM from Metro Station.
- 4 KM from Anand Vihar ISBT/ Railway Station
- 5 KM from Delhi Border.
- 8 KM form Akshardham Temple.
- 14 KM form Connaught Place
- Connecting 0.5 km to NH-24 on East and 1 KM to NH- 58 on West



gulmohur RESIDENCY INDIRAPURAM



SVP BUILDERS INDIA LIMITED

Corp. Office: 17, Kiran Enclave, Main G.T. Road, Ghaziabad - 201001 (India) Phone : 120-4187000/1/2
Regd. Office: A-3, Ground Floor, South Extension, Part-1, New Delhi - 110003 (India)

Site Address: Gulmohur Residency, Ahinsa Khand II, Near DPS School, Indirapuram, Ghaziabad.
Phone : 9717095501 / 06

website : www.svpgroup.in

*The Brochure is purely Conceptual and note legal offering. All rights reserved. The specifications are only indicative and some of these can be changed in consultation with the architect at the discretion of the builder.

GIVE A PERFECT
ADDRESS TO
YOUR DREAM

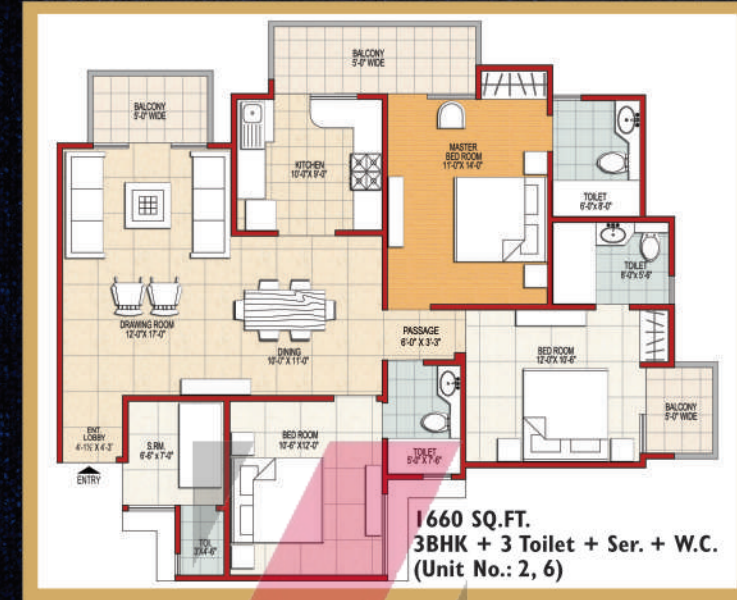
SVP Builders India Ltd. an ISO 9001 — 2000 counts among the top market leader for constructing residential and commercial spaces. SVP is the name that stands for trust, reliability, high professional standards and long-lasting customer relationship.

SVP Group has majorly contributed to the residential, commercial, educational and health services, we had completed **Gulmohur Enclave (10 acre - 625 flats)**, **Gulmohur Tower (5 acre - 280 flats)**, **The Opulent Mall (3,50,000 Sq.Ft)**, **Vishveshwarya Group of Institutions (65 acre - 4500 Students)**, largest residential campus in UP. & Among top 20 colleges), **Sarvodaya Hospital- A super speciality hospital (150 Beded)**, Our Ongoing project comprises **Gulmohur Greens (23 acre - 1300 flats)**, **Gulmohur Gardens (16 acre - 1300 flats)** and **Krishna Gardens (6 acre - 720 flats)**, **Villa Anandam (12 acre —200villas)**.

In Indirapuram, SVP Group has colonized 70 acres of land and now we are coming up with another golden opportunity to own a home in our popular Gulmohur series with planned, safe, and comfortable residential spaces providing cosmopolitan living options in **GULMOHUR RESIDENCY Indirapuram**.

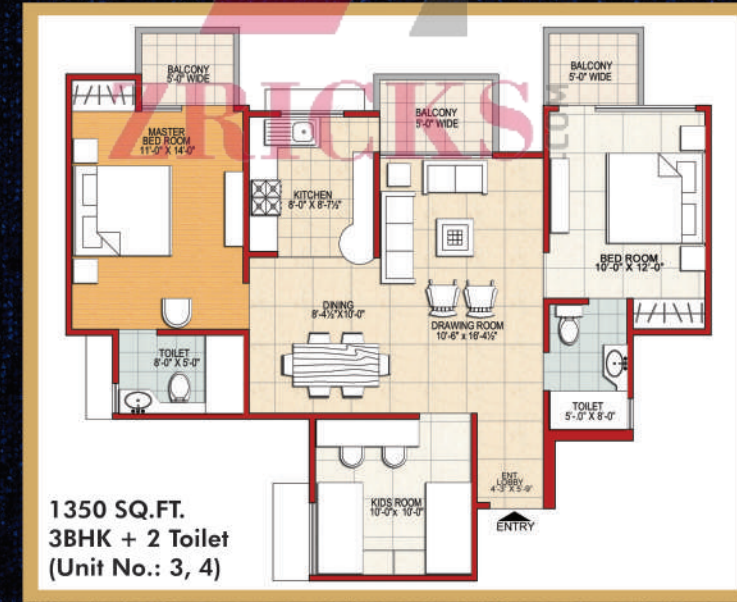


UNIT-1 OAK /ORANGE



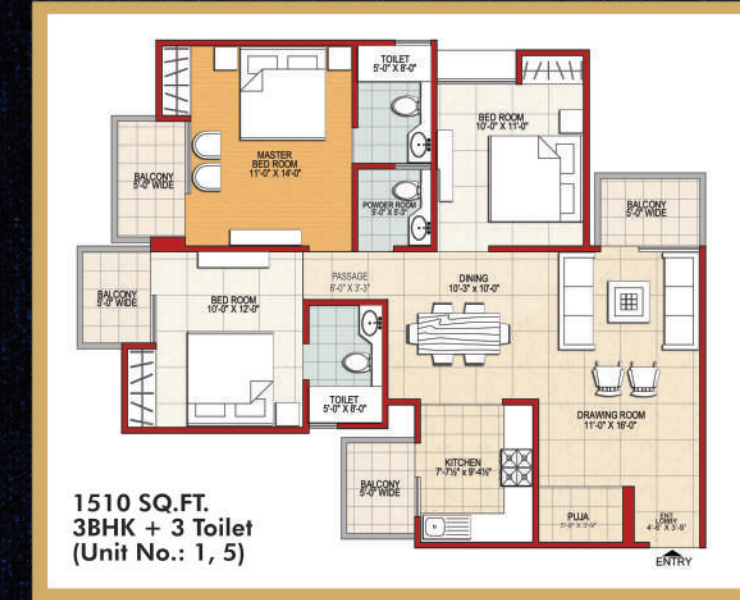
Note: - 1 Sq.M. = 10.764 Sq.Ft. approximately.

UNIT-3 OAK /ORANGE



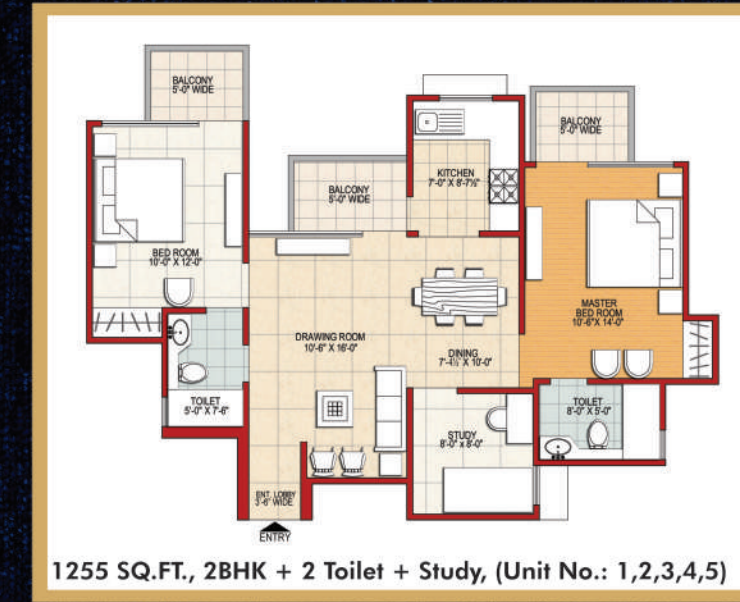
Note: - 1 Sq.M. = 10.764 Sq.Ft. approximately.

UNIT-2 OAK /ORANGE



Note: - 1 Sq.M. = 10.764 Sq.Ft. approximately.

UNIT-4 OLIVE / OKRA



Note: - 1 Sq.M. = 10.764 Sq.Ft. approximately.

Visual representation in this brochure are purely conceptual, all building plans, specifications, Layout Plans etc. are tentative and subject to variation and modify by the competent authority.