



A New Benchmark In Luxury Living





About the group

AMR Infrastructures Limited, the group's flag-bearer in the Real Estate sector is creating some of the most innovative projects with a view to redefine industry standards as well as to take people's aspirations to much greater height. With 'Best in World' lifestyles, unbounded luxuries, convenient workplaces and everlasting pleasures. AMR is continuously creating infrastructure and environment that exceeds imagination.

The flagship is a conglomerate of market leaders in wide-ranging sectors giving it a head start over peers in the real estate industry. The premier position of AMR's group companies is what draws people into selecting it for their long term interests and goals.

One of the group companies, **R.C. Jewellers** located in the Indian capital is a reputed manufacturer, exporter & wholesaler of high standard range of the Indian Gold Jewellery, Diamond Jewellery, Designer Gold Jewellery, Kundan Jewellery, Antique Gold Jewellery and many more. It is India's First 100% Hallmark Jewellery Showroom.

R.C. Jewelers was established in the year 1987 with an objective of presenting India's finest Jewellery tradition to the people at world stage. Since its inception, the company has focused on designing and manufacturing quality Jewellery items and giving the best of services to the buyers. Within a very short span of time, company's vision and focus enabled it to become one of the renowned names in the Jewellery industry of India. Authenticity is the buzzword and faith is the basic of its customers. It is this faith that has been translated into confidence in the AMR flagship.

The other group company **KMK Fabrics Private Limited** is a pioneer in import & export of fabrics for the past 15 years. Today, KMK Fabrics Private Limited is the undisputed leader - far ahead of its rivals.

Commitment towards maintaining quality even while striving to attain perfection, coupled with flawless delivery of products in the domestic market has helped it carve a permanent niche for itself in the international markets. Today the company is among the few in the Indian fabric industry whose professional profile matches the best of the giants in the international fabric industry. This one time David of the Indian fabric industry is at par with the Goliaths of the international markets.

The group is also a leader in the rice industry through its renowned brand "**Shri Lal Mahal Chawal**". **LM 365** Stores which is the new addition to the family is one of the leading chains of departmental stores being opened all over India.

AT AMR GROUP, the aim is not just to turn your dreams to reality, but to enable you dream much higher.



World-class Lifestyle. Homely Environment.

AMR i Homes is a premium project of AMR Infrastructures. The project, comprising fully furnished studio apartments with all the conceivable luxuries for a lavish lifestyle, adorns the heart of Kessel i Valley in Greater Noida Tech Zone. AMR i Homes spreads over an area of 25 acres and is situated along the 400 feet wide Taj Expressway.

Designed by the world renowned architect group Aedas of the United Kingdom, AMR i Homes promises you five star luxury and foolproof security. The apartments have big living spaces, spacious rooms replete with attached bathroom, lobby and fully equipped kitchen. AMR i Homes is best suited for businessmen, discerning travelers, NRIs, Expatriates and anybody who values luxurious lifestyle while enjoying a homely environment.

Advantages of Greater Noida

The luxurious amenities of AMR i Homes are well complemented by its locational advantages. It comes under Kessel i Valley, which forms a part of the Greater Noida promoted 650 acres of Tech Zone that has now become a hub for IT and Multinational Companies. Some of the brands that have made their marks in the Tech Zone are Unitech, Stellar, Ansal, KLJ, Wipro and NIIT to mention a few. Night Safari in 350 acres and Gautam Budh University in 650 acres are all situated at a stone's throw distance from AMR i Homes. The proposed Formula 1 Track, which will become an international destination, is also only about 2 kilometer away from the project site. World-class mall with multi-screen Satyam Cineplex is another highlight of Kessel i Valley.

Some of the important developments in Greater Noida that can effect the property rates in future are :-

Taj Expressway - It is proposed to be a six-lane highway and would connect 160 kilometers distance between Greater Noida and Agra. The Taj Mahal would be just 100 minutes from the Taj International Airport near Greater Noida through this Expressway.

Exposition Mart - It is being set up for the promotion of the exports of handicrafts from India for the cottage sector i.e. handicrafts, handlooms, carpet, jute, etc. It is being set up by the Ministry of Textiles, Govt. of India.

Night Safari - It is planned to have a unique concept where visitors can view the animals at night in the open wilderness, but confined to specified spaces and with proper illumination for night conditions. The objectives is to augment Greater Noida as a premier tourist destination.

Gautam Budh University - It is one of the biggest universities in asia. The University is being developed as a fully residential campus, with air-conditioned classrooms, library, meditation centre, computer centre, instrumentation centre, seminar halls and well-equipped laboratories. The University will also have a gymnasium, swimming pool, auditorium and sports ground within the campus.

Formula One - Formula One motor racing will arrive in India in 2010. The race track to be developed by the JP group, will be 2 km from AMR i Homes near the proposed Greater Noida airport about 50 km from Delhi.

Specifications

AMR i Homes combines contemporary interior designs with five star facilities including a health club with swimming pool and traditional butler service. The property features 300 deluxe one room apartments, 200 deluxe studio apartments, one and two bedroom Deluxe King's and Minister's apartments; 20 Superior one / two bedroom Falconer's apartments and the Chairman's Quarter with 3 bedrooms. The dimensions of the apartments range from 390 sq ft to 550 sq ft and 750 sq ft

Amenities in Every apartment

Air Conditioner | Refrigerator | Food Processor | LCD with Cable Connection | Double Bed with mattresses & Pillow | Curtains & Curtain Rod | DVD / VCD Player | EPABX System | RO Unit in Kitchen | Study Table with Chair | Designer Light Fitting | Fully-equipped Kitchen | Crockery | Electric Chimney | Electric Oven | Electric Kettle | Juicer Mixer | Toaster | Complete Wood work in Cupboard | Towel Rack | Gas burner with Cylinder | Rocking Chair | Bookshelf cum showcase | 2 seater dining table | Sofa Set

**Last 4 amenities are not present in 390 sq ft apartments*

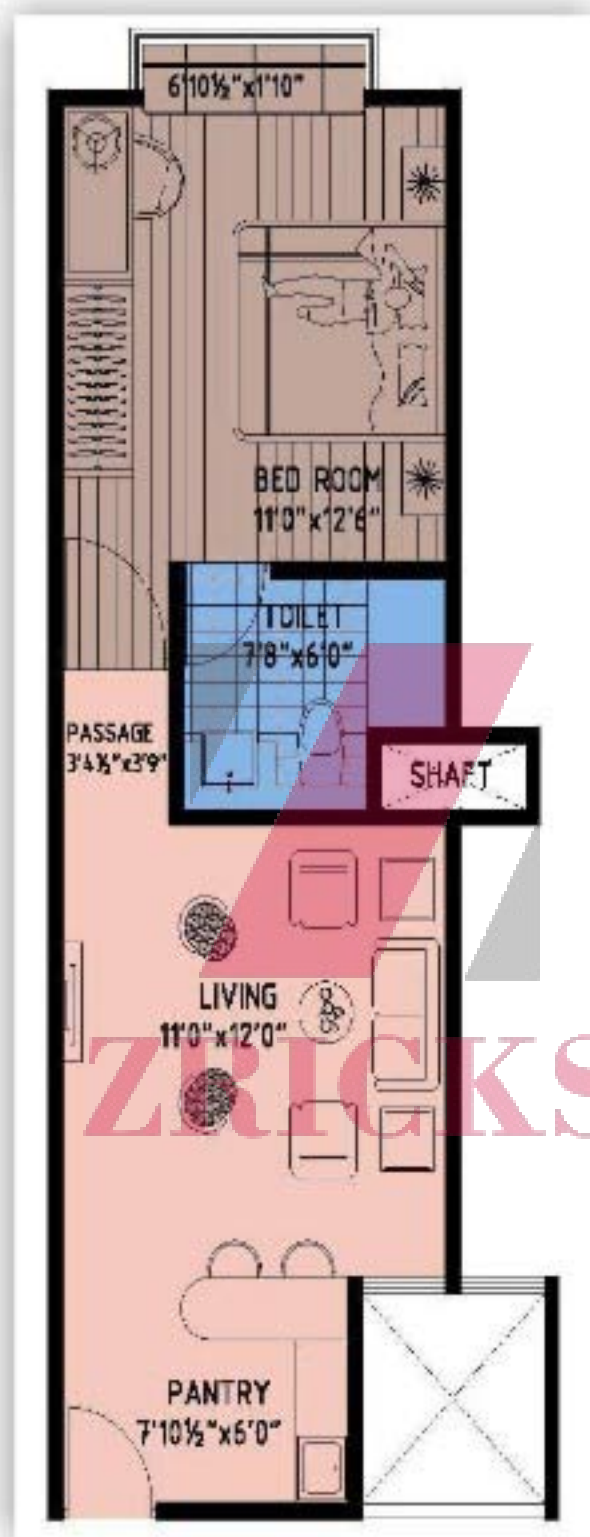
Common Amenities

Lifts | Concierge | Secure Entry System | Maid service available | Broadband / ADSL Connection | Conference Room | Business facilities | In-house restaurant | Health Club | Gym | Sauna | Swimming Pool | Parking | Convention Centre | Shopping Mall | Hyper Market | Food Court



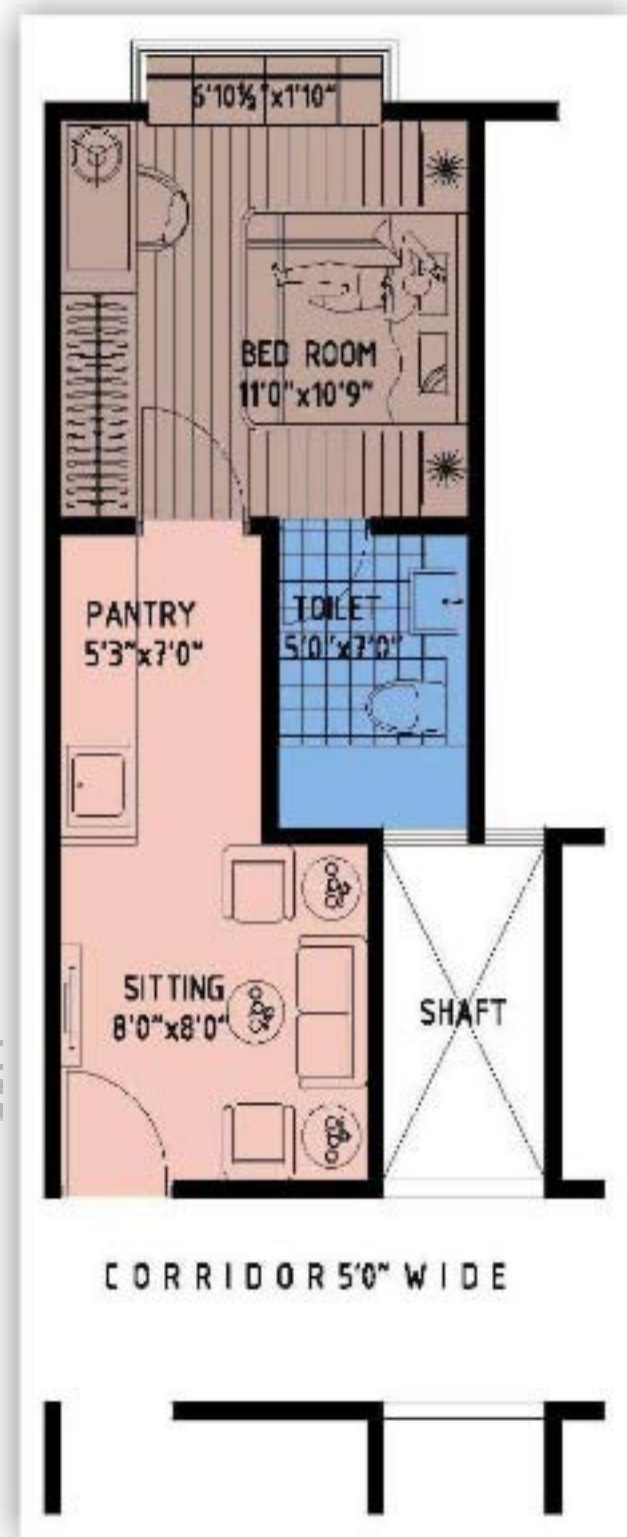


CORRIDOR 5'0" WIDE
Area 390.00 Sq.Ft.



CORRIDOR 5'0" WIDE
Super Area 550.00 Sq.Ft.

*Limited Flats of 2 BHK (750 Sq. Ft.) are also available



Super Area 390.00 Sq.Ft.

Some Projects of AMR Infrastructures



I-Mall, Kessel i Valley, Greater Noida

- Longest mall with biggest floor plate of 3.7 lac sq. ft. with retail area only on the ground floor
- Huge frontage of 1.3 km on 135 ft wide connection road
- Sky venture Theme
- Ground floor ceiling height for the first time of 18 ft
- More than 70% of the area is landscaped
- 800 ft long landscaped area with water bodies in front of mall
- Open terrace & terrace garden on first floor
- 6 screen multiplex signed with Satyam Cineplex
- First project in India designed by International architect Aedas Pte. Ltd., UK
- Big Brands are already present.



Kessel Grand, Kundli

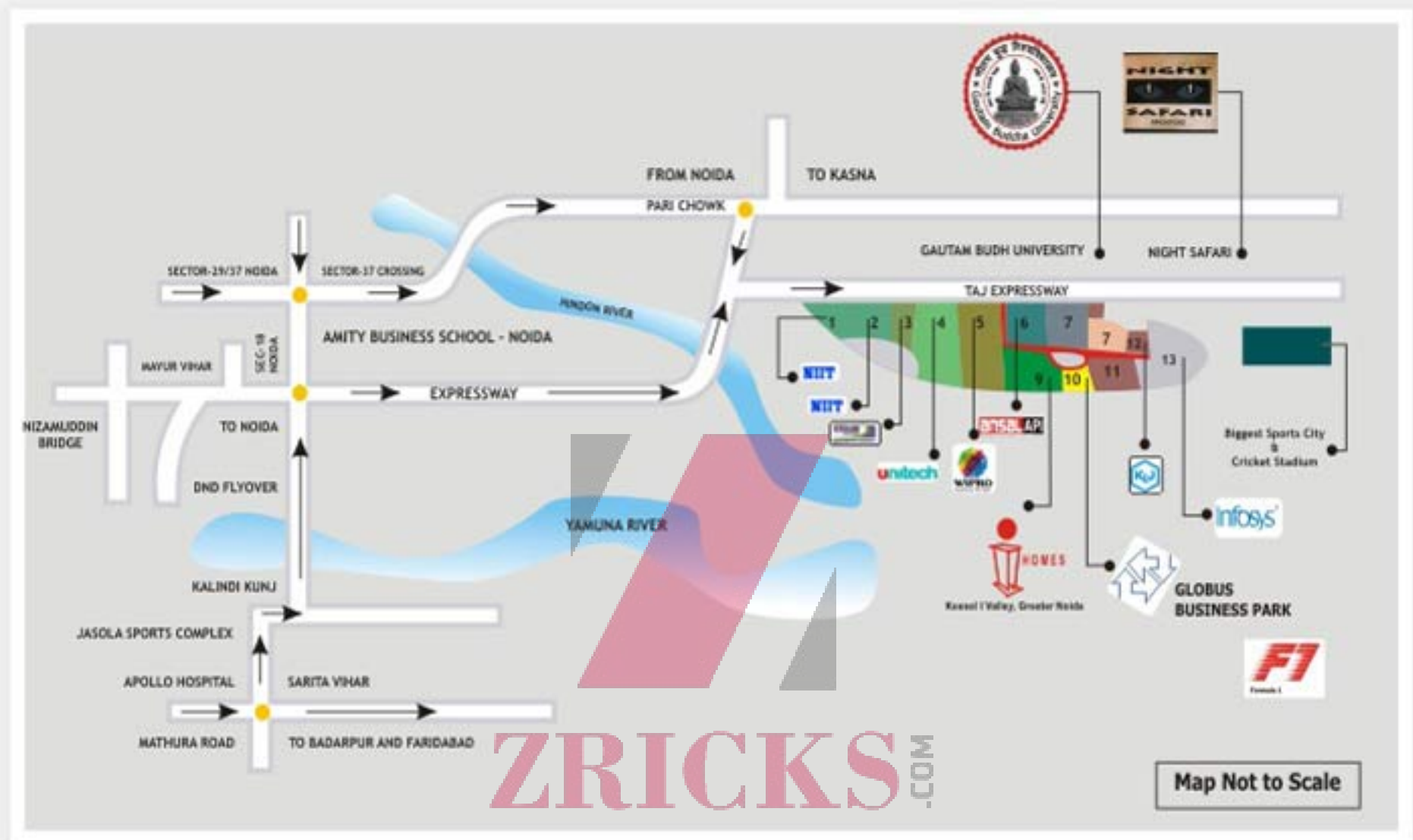
- Situated on Delhi-Haryana Border, right on National Highway 1
- Just 20 km away from Connaught Place
- Just 4 km away from famous amusement park The Splash
- Famous Industries and corporate companies already in operation
- Project legally approved by Haryana Govt.
- Construction in full swing
- Front area 85 meter wide and North-East facing which is very much suitable according to Vaastu
- Parking slot available upto 3 floors



Manthan, Greater Noida

- Located on 150 feet wide road
- Close proximity with Noida, Ghaziabad & Faridabad
- Well connected to proposed metro station
- Proposed International Airport
- Night Safari
- F1 Race Track
- Close to FNG Corridor
- Close to all daily need amenities
- Close to Pari Chowk (Near Yamuna Express Way)
- Opp. Gautam Buddha University.

Location Map



Images shown are for indicative purposes only and are not specific to this development.

AMR INFRASTRUCTURES LIMITED

Registered Office: 2425/11 AMR HOUSE, Gurudwara Road, Karol Bagh, New Delhi - 05, Ph.: 011 4500 1000 (30 Lines)

SITE OFFICE : Kessel I Valley
Plot No. 9, Tech Zone, Greater Noida.

SITE OFFICE : Kessel Grand
NH-1, Kundli, Haryana.

E-mail: amrinf.ltd@gmail.com, Website : www.amrinfrastrucres.com

