



# NEEMRANA ONE

*A home for everyone at the gateway of Neemrana*



**ABP**  
ABP HOUSING PROJECTS PVT. LTD.



*a good home is heaven on earth*





# NEEMRANA ONE

*With a desire to provide 'a home for everyone' with affordable pricing ABP Housing Projects Pvt. Ltd. brings to you an opportunity of lifetime in form of its dream integrated project "Neemrana One" - an exclusive gated, secured, well planned development in Neemrana.*

*With an option of 1, 2 & 3 BHK apartments, commercial and retail space, hotel with ultra modern facilities & an aesthetic landscaping surrounded by beautiful scenic Aravali Hills, "Neemrana One" gives you a life set in luxury and a quality of living that equals the very best.*

*Luxurious outdoor and indoor spaces, state-of-the-art club house and shopping centre, all just a walk away complete the living experience at the "Neemrana One".*

*Its premium location on NH-8 just adjacent to the Shahjahanpur toll gate and being in close vicinity of multiple mega industrial and commercial developments, world famous educational institutes and with its great heritage of history make "Neemrana One" a unique investment option.*

RESIDENTIAL . COMMERCIAL . RETAIL . HOSPITALITY



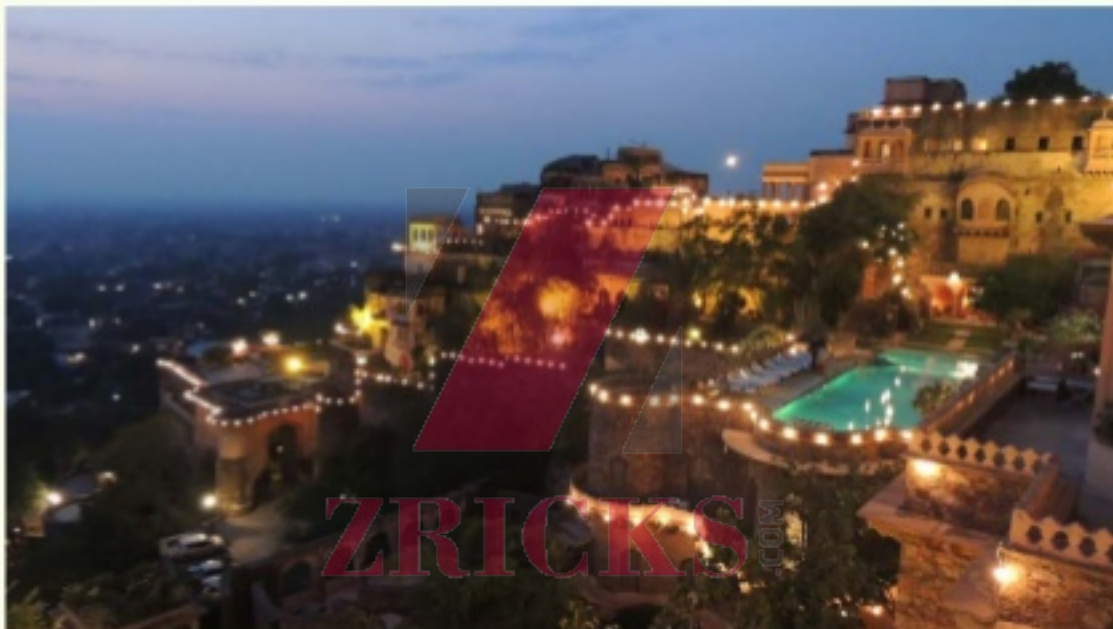


# Neemrana

## *Upcoming Biggest Industrial Hub*

*Already gained popularity as a "GLOBAL CITY", Neemrana in Alwar district of Rajasthan is gaining ground amongst investors for the potential it offers for real estate developments. Cradled in the lap of nature and built on a rich heritage of history, Neemrana is the city of future - well planned.*

*Being developed as one of the biggest industrial hubs in the heart of India, Neemrana is strategically identified as key location on Delhi Mumbai Industrial Corridor (DMIC) and Delhi Mumbai Freight Corridor with tremendous investment and employment opportunity.*



- *Easy accessibility due to NH-8, Dedicated Freight Corridor (DFC) Nodal Station Rewari and new multi modal logistic park near Kathuwas Railway Station through CONCOR.*
- *Being developed as a major industrial destination on DMIC (Delhi - Mumbai Industrial corridor) on NH-8 between Jaipur and Delhi.*
- *Major historical tourist places like Heritage hotels and Forts in close vicinity.*
- *Already developed around 3500 acres RIICO Industrial Park with more than 500 industries under production.*
- *Japanese City for high-end Japanese industries already developed with the collaboration of JETRO (Japan External Trade Organization & RIICO)*
- *Around 500 acres being developed as an Education Hub with over 38 world famous institutes which include NIIT University, Raffles, Rai University, School of Aeronautics etc.*
- *Proposed airport with cargo facilities at Neemrana between Jaipur & Delhi in the name of Greenfield Airport.*
- *Proposed international investment zones with Korea, Italy and Taiwan already signed MOUs.*







# NEEMRANA ONE

## Aerial View of Neemrana One





# Project Overview

- ✦ Well ventilated, well designed apartments with natural flow of light.
- ✦ Furnished with ultra modern facilities dedicated club house with sports centre, health club, swimming pool gymnasium, tennis court etc.
- ✦ Power back-up (24x7)
- ✦ Ample Parking facility
- ✦ Gated complex with round the clock security
- ✦ Ample green areas and beautiful landscaping
- ✦ Shopping mall for convenient shopping
- ✦ Luxury hotel with world-class facilities.
- ✦ Earthquake resistant RCC framed structure.





# Master Plan

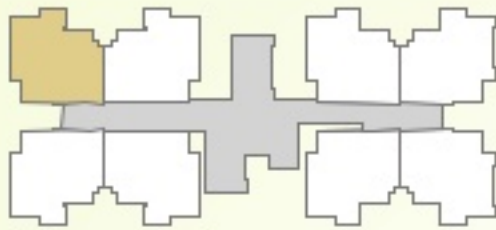
NEEMRANA ONE





# Floor Plans

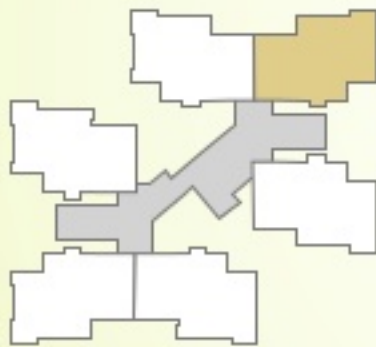
1BHK  
600 sq. feet



1BHK Cluster



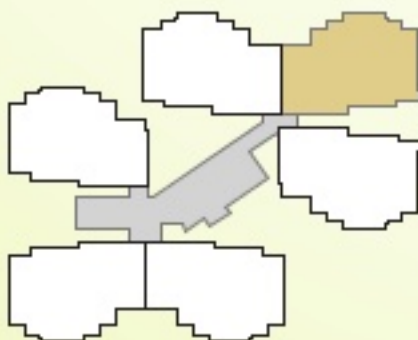
2BHK  
1000 sq. feet



2BHK Cluster



3BHK  
1500 sq. feet



3BHK Cluster







*ABP Housing Projects Pvt. Ltd. continues to expand its efforts to grow by meeting customer needs today and in the future by continuing to build partnerships based on trust, and by establishing direct relationships with the customers. We accomplish this by responding to changing market condition, building a performance driven culture that continues to provide value-added construction services to our customers.*

*In its projects, the group's first priority is aesthetics. Design for comfort living is the group's mantra. The best amenities for comfortable living are included in the group's projects - modern club facilities with swimming pools, gym, sports facilities and spaces for community activities offer the best aspects of community living*

*On-time project delivery is another advantage that comes with ABP Housing Projects Pvt. Ltd.'s projects, one that the group takes a lot of pride in professional project management, a dedicated site supervision team and a high regard for punctuality mean that buyers and investors are never kept waiting for their property.*

#### **Our Motto**

*We believe in service that makes the difference.*

#### **Our Vision**

*To become the most trusted Real Estate Developer in India.*

#### **Our Mission**

*To provide Unparalleled & Iconic living spaces we are driven with the idea of creating spaces which stand as metaphors for excellence and customer satisfaction.*

#### **Our Values**

- *Customer first*
- *Quality focus*
- *Professionalism*

**ZRICKS**.COM





# Proposed Specifications

## STRUCTURE :

Earthquake resistant R.C.C. framed structure.

## FLOORING

LIVING, DINING, BEDROOM & LOBBIES :

Vitrified coloured tiles.

KITCHEN, TOILETS & BALCONIES :

Anti-skid ceramic tiles.

STAIRS & CORRIDORS :

Indian marble.



## FINISHING

DOORS :

Flush door with hardwood frames.

OUTSIDE DOORS/WINDOWS :

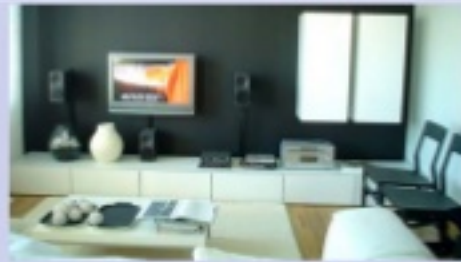
UPVC frames & glazing

INTERNAL WALLS/CELLING :

Acrylic washable distemper in pleasing colour shades.

EXTERNAL :

Texture.



## ELECTRICAL :

All rooms including living, dining & kitchen in concealed PVC conduits with copper wiring and branded modular switches, sufficient light and power points.

Cable and telephone points in living room & bedrooms.



TOILETS : **ZBRICKS**.COM

Branded sanitary fittings and CP Fittings.

Chinaware matching tiles in all the toilets.

Washbasin with granite counter and CP fittings.

24 hour water supply.

## KITCHEN :

Designer granite counter.

Stainless steel sink with hot & cold CP fittings.

Glazed wall tiles.

24 hour water supply.



## COMMUNICATION & SECURITY SYSTEM

INTERCOM :

Intercom facility in all the flats connected with guard room.

SECURITY :

Guard room at main entrance for efficient manual vigilance.



# NEEMRANA ONE





**ZRICKS**.COM

RESIDENTIAL | COMMERCIAL | RETAIL | HOSPITALITY | MEDIA | EDUCATION

[www.abpdevelopers.com](http://www.abpdevelopers.com)



**Regd. Office:**

21, 2nd Floor, Ninex City Mart, Sohna Road, Gurgaon, Haryana

Phone : +91 124 6523888, 6540888, 6545888

Mail : [info@abpdevelopers.com](mailto:info@abpdevelopers.com)

**Site Office:**

Neemrana One, on NH8, Adjacent to Shahjahanpur Toll Booth,  
Neemrana, Distt. Alwar, (RAJ.)

Disclaimer: Visual representation shown in this brochure are purely conceptual, Builder reserves the right to change building plan, specification, layout plans etc.





ZBRICKS.COM





ZRICKS.COM





ZRICKS.COM