



**ARDEE CITY**

**GATE-3**

**ZRICKS**.COM

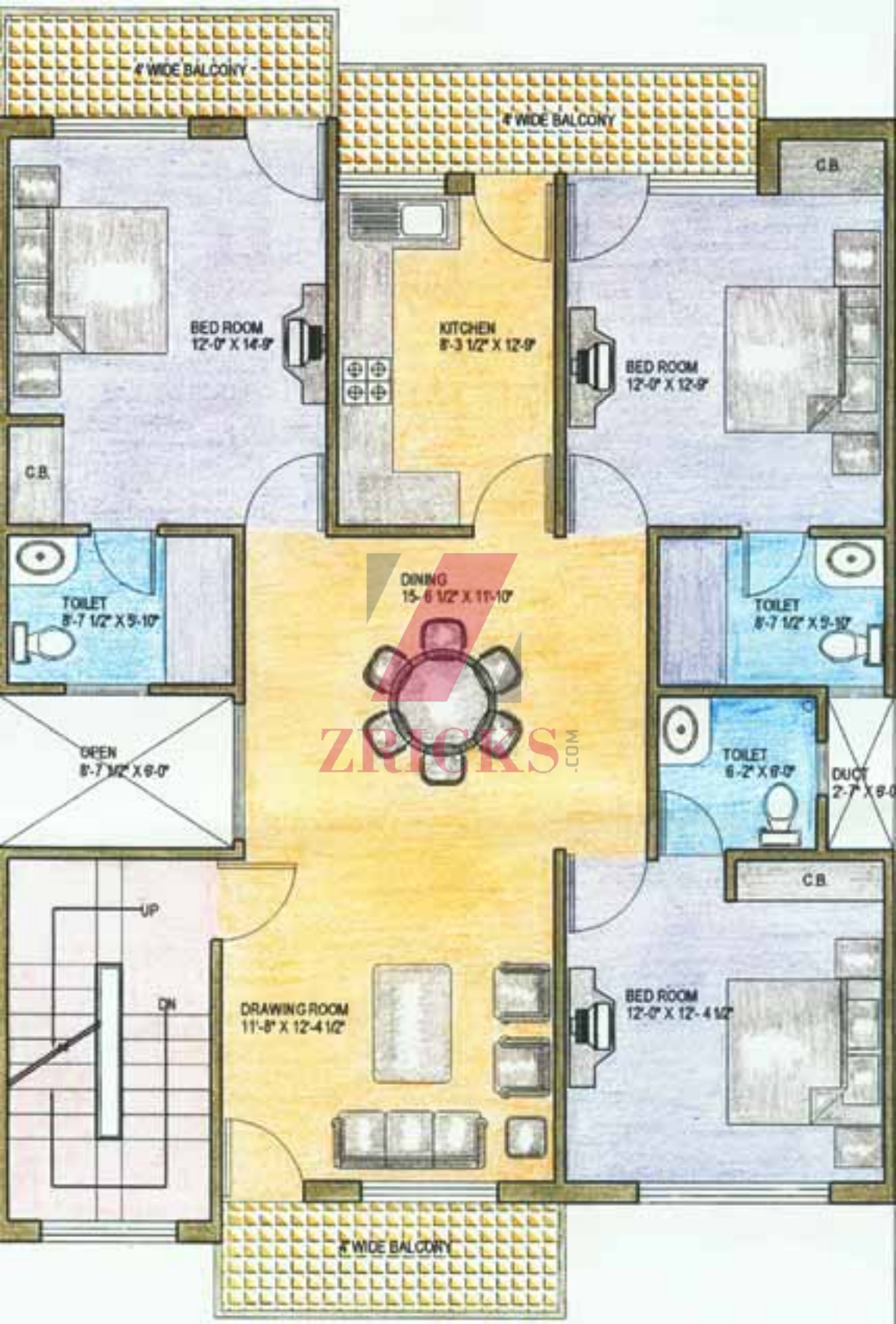


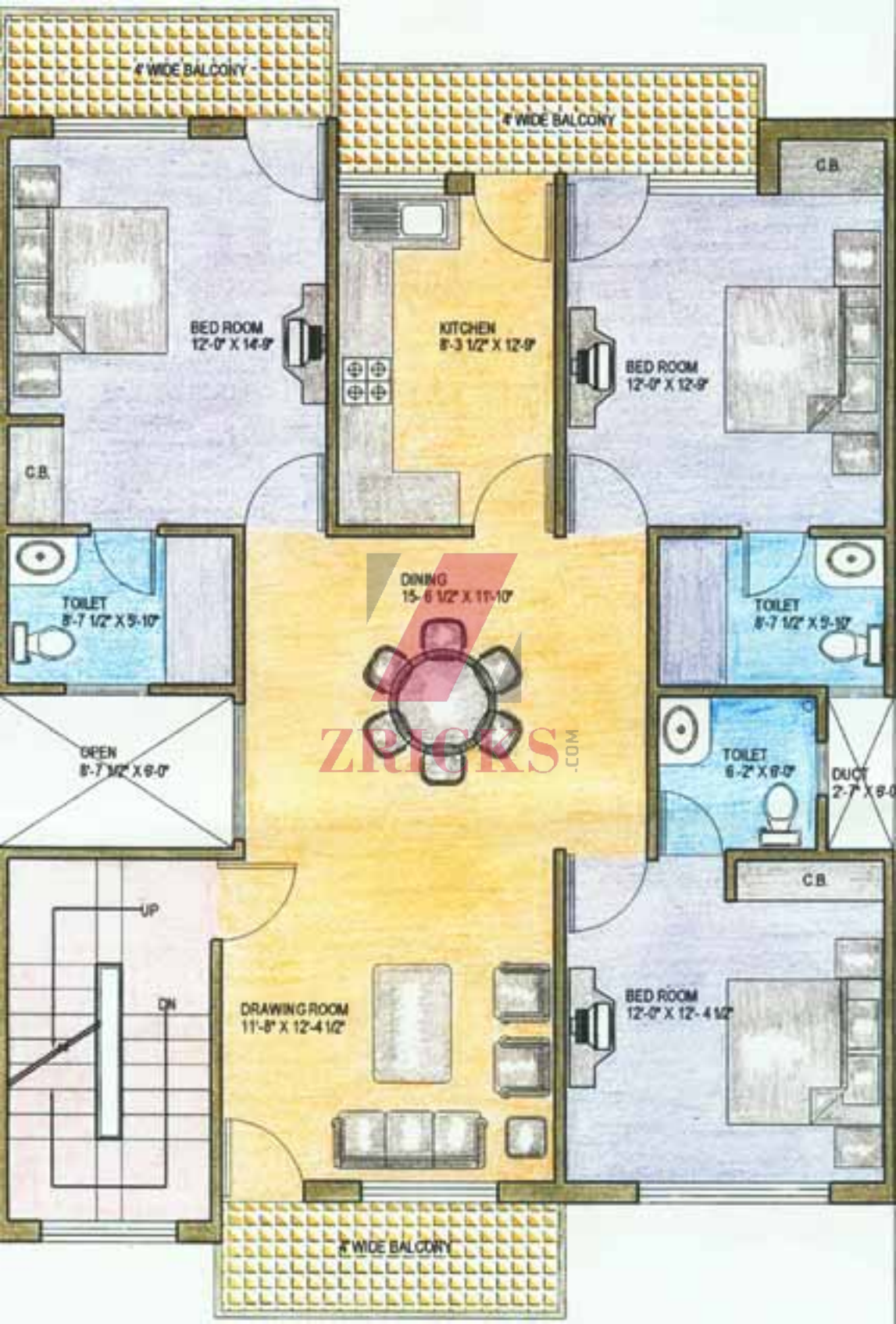
platinum  
**GREENS**  
DELUXE INDEPENDENT FLOORS

ZBRICKS.COM



TRICKS





7' WIDE REAR LAWN

3' WIDE BACK VERANDAH

BED ROOM  
12'-0" X 14'-0"

KITCHEN  
8'-3 1/2" X 12'-0"

BED ROOM  
12'-0" X 12'-0"

TOILET  
8'-7 1/2" X 5'-10"

DINING  
15'-8 1/2" X 11'-10"

TOILET  
8'-7 1/2" X 5'-10"

OPEN  
8'-10" X 9'-0"

TOILET  
8'-2" X 9'-0"

DUCT  
2'-7" X 9'-0"

ZRICKS.COM

DRAWING ROOM  
11'-8" X 12'-4 1/2"

BED ROOM  
12'-0" X 12'-4 1/2"

3' WIDE FRONT VERANDAH

FRONT LAWN

MAIN ENTRY





ARDEE  
CITY



ZRICKS



ARDEE  
CITY



ZRICKS

ARDEE  
CITY

ARDEE  
CITY





ZRICKS

specification

## Drawing, Dining, Entrance, Lobby and Passage

Floor Marble  
Walls Plaster and painted with pleasing shades of distemper

## Bed Rooms

Floor Marble  
Walls Plaster and painted with pleasing shades of distemper

## Toilets

Floors Ceramic tiles  
Walls Ceramic tiles upto 7'-0" height (dado)  
Sanitary Ware Good quality sanitary ware, standard quality C.P fittings, Washbasins, Towel rails.  
Geyser and Exhaust fan in Master Bedroom Toilet.

## Kitchen

Floors Ceramic tiles  
Walls Ceramic tiles upto 2'-0" height above counter top  
Counter Granite counter top with stainless steel sink  
Geyser/ Exhaust fan

## Doors & windows

Door Frame Good quality commercial wood  
Door Shutter Enamel painted flush door  
Window Powder coated Aluminum frame windows with glazing/Wooden windows  
Main front door Both side teak finish flush door

## Electrical

Concealed copper wiring, plate type switches and sockets as per standard norms. Provision for TV and telephone points in Drawing room and Master bedroom

## Common Area/ Staircase

Kota Stone with Abu Green Marble trimmings

## Power back-up

100% power backup \*