



ZBRICKS

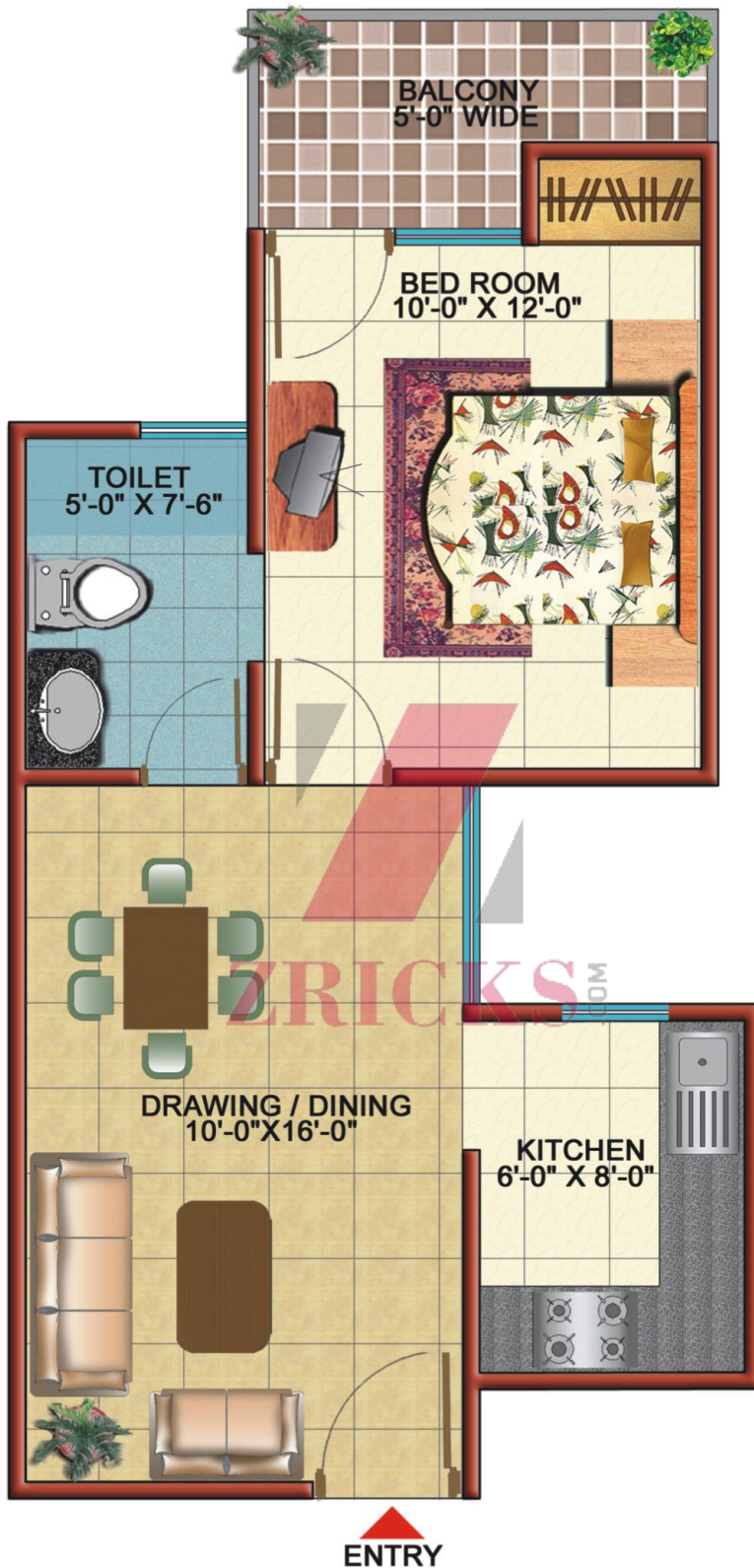


ZRIQS

F-BLOCK



ZRICKS



TYPE - 6

1 BHK + 1 TOILET
SUPER AREA: 600.00 SQ.FT.

BLOCK - E
FLAT NO.- 1 TO 8



TYPE - 5



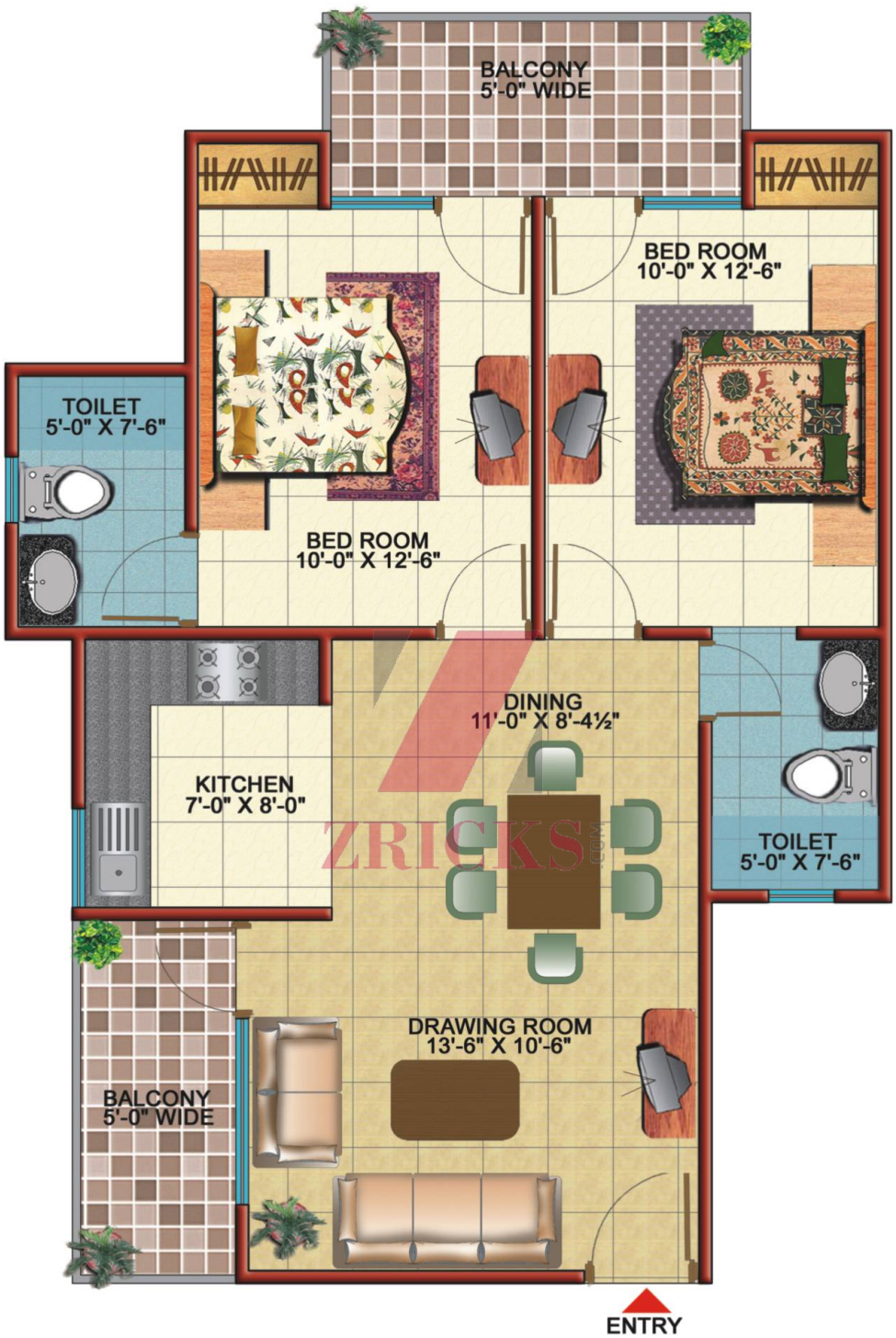
ENTRY

2 BHK + 2 TOILET

SUPER AREA : 1050.00 SQ.FT.

BLOCK - C

FLAT NO.- 1 TO 8



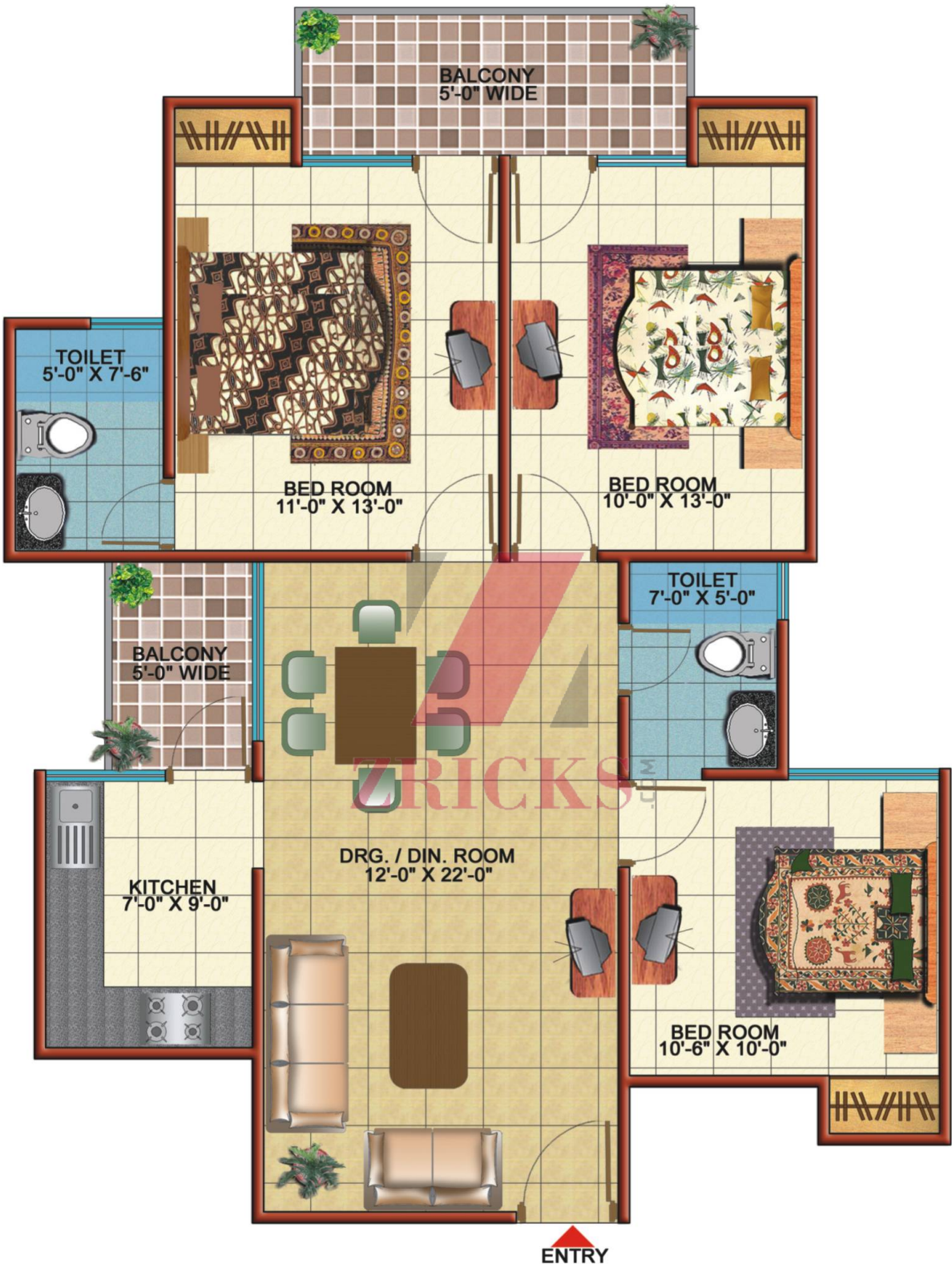
TYPE - 4

2 BHK + 2 TOILET

SUPER AREA : 1150.00 SQ.FT.

BLOCK - D

FLAT NO.- 1 TO 8



TYPE - 3

3 BHK + 2 TOILET

SUPER AREA : 1300.00 SQ.FT.

BLOCK - F

FLAT NO.- 1 TO 8



TYPE - 2

**3 BHK + 2 TOI. + SER. + W.C.
SUPER AREA : 1480.00 SQ.FT.**



**BLOCK - A,B & G
FLAT NO.- 2 & 5**



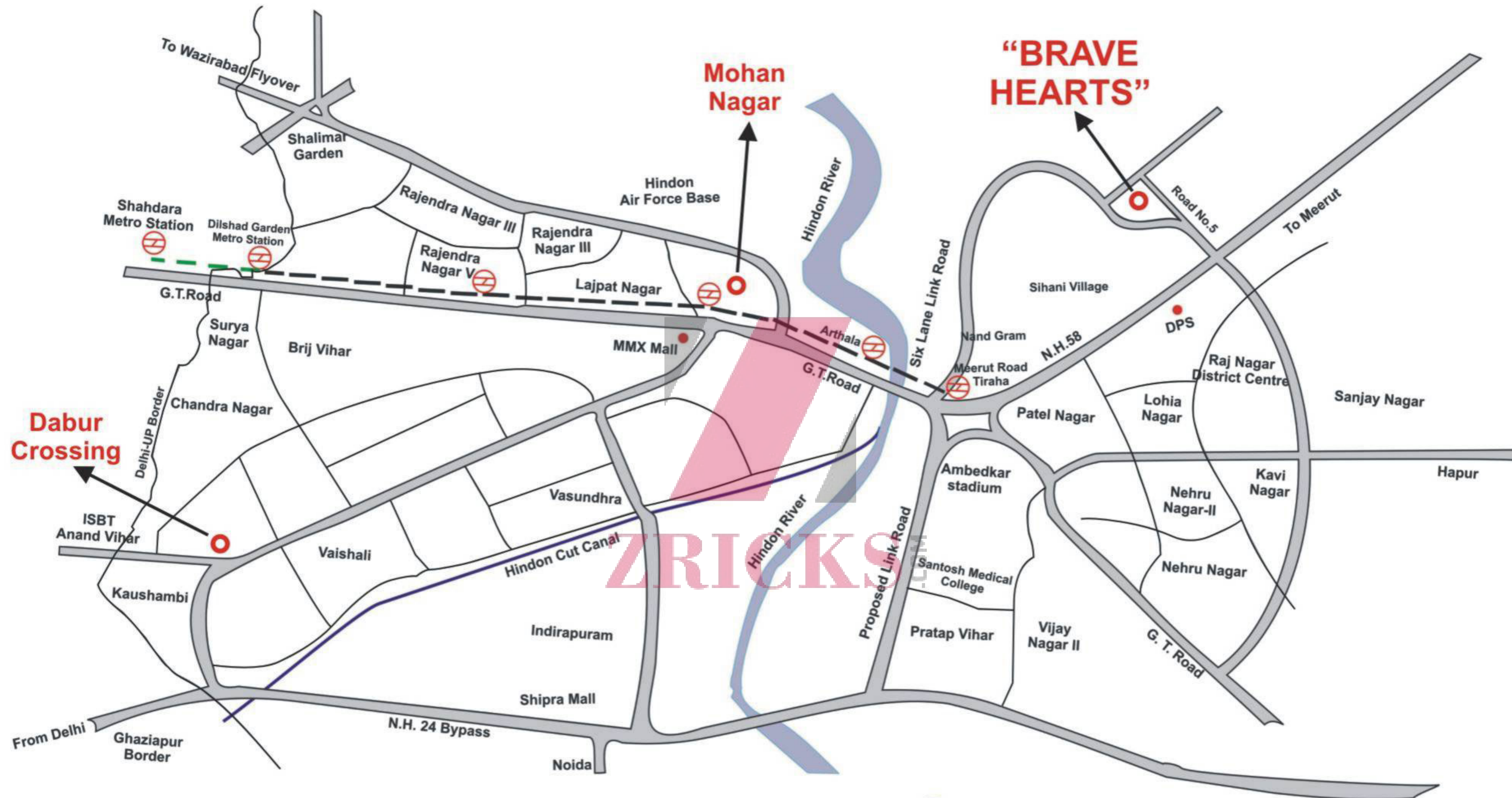
TYPE - 1

**3 BHK + 2 TOI. + SER. + W.C.
SUPER AREA : 1510.00 SQ.FT.**

**BLOCK - A,B & G
FLAT NO.- 1,3,4 & 6**

SPECIFICATIONS & AMENITIES WITHIN THE PROJECT

| | |
|---------------------------------------|---|
| Super Structure | Earthquake Resistance in RCC Frame |
| Steel | ISI TMT Bars |
| Cement | ISI 43 and 53 Grade |
| Floor to Floor Height | 10 Feet |
| External Finish | Plaster with Texture finish |
| Boundary Height | 6 ft brick wall. +2 ft grill |
| Worship Place | Dedicated space for worship |
| Club | Club building is three storied with super area of approximate 6000 sq. ft with swimming pool, badminton court & community centre. |
| Apartment Block | 2 lift for each block, 100% power backup for essential services, adequate securities services, fire safety system as per latest norms, exterior texture finish, standard termite treatment, telephone/cable points. |
| Living/Dining | Floor - Tiles, Walls - Oil bound distemper |
| Bedrooms | Floor-Ceramic tiles (branded), Walls-Oil bound distemper Cupboard space provided. |
| Kitchen | Combination of ceramic tiles 2 feet above Green Marble Counter, Stainless steel single box sink, Water supply for kitchen, Ceramic tiles floor |
| Toilets | Floor-Anti skid Ceramic tiles, Sanitary fittings-Chromium Plated ordinary range, white ordinary sanitary ware. |
| Balcony | Ceramic tiles floor. |
| Internal Finish | Plaster with Oil bound distemper |
| Internal Electrification | Copper Cables (reputed brands) in Conduits, Sheet and Switches |
| Internal Communication Network | Wiring Provision for T.V. Telephone & Intercom |
| Main Entrance/ Other doors | Frame – Hardwood / Aluminum, Door- Enamel painted / aluminum. |
| Bathroom/Sanitary Fitting | Chromium plated classic range white ordinary |



 **Metro Station**

----- Proposed Metro line, expected date of completion Sept. 2010

----- Existing Metro line

Source: GDA, Infrastructure Brochure

Not to scale. Indicative only



45.00 MT. WIDE MASTER PLAN ROAD

