

Specifications of the building to be constructed :-

FLOORING

Vitrified tiles in Drawing / Dining Room, Kitchen, passage and Bedrooms (laminated Wooden Flooring in Master Bedroom) and Ceramic Tiles in Toilets & Balconies

DOORS & WINDOWS

Decorative Solid Hard Wood / Flush Doors, Aluminum power coated Glazed Windows / equivalent

KITCHEN

Modular Kitchen, Working platform with Granite Top with deep bowl Stainless Steel sink, Designer Ceramic Tiles upto 2ft. ht. above working platform.

TOILET

Designer Toilets with Ceramic Tiles up to 7 ft. ht. ISI W.C. Washbasin & C.P. Fitting.

INTERIOR WALL FINISH

Designer Concept Paint with combination of Texture & Rice Oil Bound Distemper

ELECTRICAL

Modular Electric Switches in Drawing Room, Dining Room & All Bedrooms.



EXTERNAL

Permanent Texture Finish/Paint.

STRUCTURE

Earthquake Resistant R.C.C. Structure.

- ATM | DEPARTMENTAL STORE
- CHEMIST SHOP
- RESTAURANT AT GROUND FLOOR
- MODULAR KITCHEN WITH R/O & WOODEN FLOORING ON BEDEOOM

- 2 Min. Drive From Sai Temple
- 3 Min. Drive From From Shoprixmall
- A Beautifull Park Just A Minute Away
- Sapphire International School Adjacent To Property
- 5 Min. Drive From Fortis Hospital
- 5 Min. Drive From Orange Pie Hotel
- 7 Min Drive From NH-24

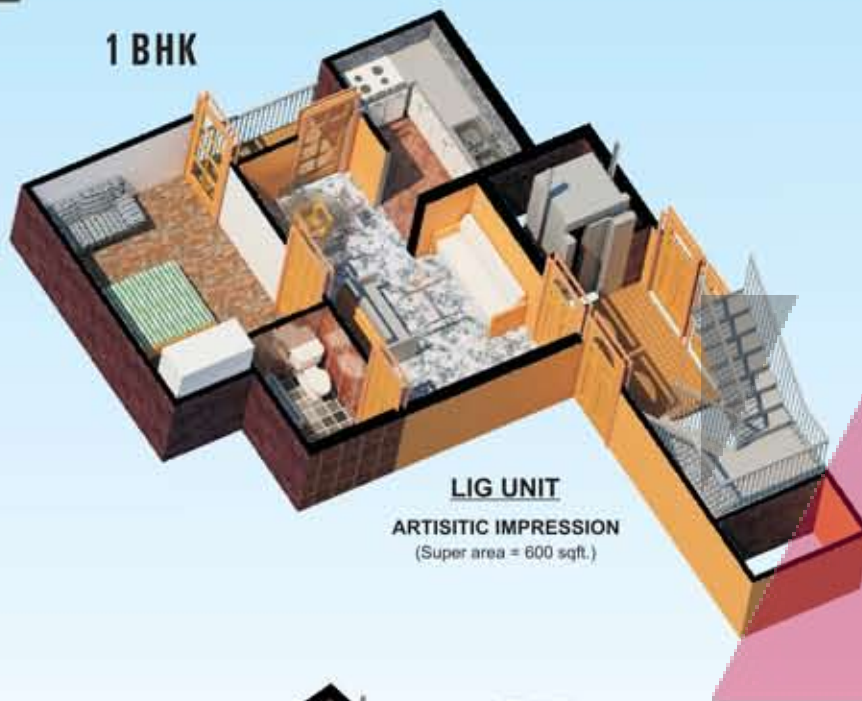


1 BHK



LIG UNIT
TYPICAL LAYOUT PLAN
(Super area = 600 sqft.)

1 BHK



LIG UNIT
ARTISITIC IMPRESSION
(Super area = 600 sqft.)

2 BHK



MIG UNIT
TYPICAL LAYOUT PLAN
(SUPER AREA = 900 SQFT.)

2 BHK



MIG UNIT
ARTISITIC IMPRESSION
(SUPER AREA = 900 SQFT.)

TYPICAL BLOCK LAYOUT PLAN



ZRICKS.COM

