

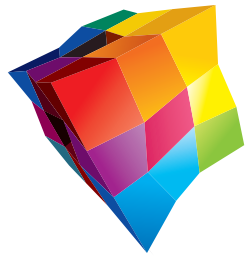
CENTRADE
BUSINESS • ENTERTAINMENT • SPORTS

ZRICKS.COM





LET'S PARTICIPATE, DEVELOP AND LEAD OUR WORLD TO
CUTTING EDGE DEVELOPMENTS AND ENRICHED
EXPERIENCES.



CENTRADE
BUSINESS • ENTERTAINMENT • SPORTS

A BUSINESS DESTINATION THAT IS READY FOR TOMORROW

■ REDEFINING THE CONVENTIONAL CONCEPT OF STAND-ALONE WORK SPACES BY INTEGRATING WORK WITH LEISURE.

- Spread over sprawling 5 acres
- Intelligent, Green Building
- A contemporary yet modern design & integration of modern technology
- Iconic Landmark Destination with finest infrastructure
- RCC framed structure designed
- Un-Paralleled investment opportunity

AN INCOMPARABLE WORK ENVIRONMENT HERE GIVES YOU THE FLEXIBILITY OF TOMORROW, TODAY.

- Lockable Office Space
- Premium Business Suites
- Centrade Business Centre
- Banks & ATM's
- Retail + Shopping
- Restaurants & Food Courts
- Recreational Facilities
- Kids play area & Crèche
- Club house: SPA, Gymnasium, Indoor & Outdoor Swimming pool





DAY VIEW

*Artistic impression of Centrade Business Park



NIGHT VIEW

PROJECT HIGHLIGHTS



RESTAURANT & FOOD COURT



PREMIUM BUSINESS SUITES



LOCKABLE OFFICE SPACE



RETAIL SHOPS



CENTRADE BUSINESS CENTRE



BANK SPACES



ATM



PRIME LOCATION



RECREATIONAL FACILITIES



CRECHE



CLUB HOUSE



SKY POOL



- Strategic location, abundant amenities & easy accessibility
- Convenient and proximity to important destinations
- Closer to Noida-Greater Noida Expressway, a six lane Expressway is a traffic free zone with smooth and uninterrupted driving
- Excellent infrastructure complimented with world class residential & commercial development with schools, hospitals in close proximity



- Easy access to Delhi, Noida, Greater Noida, Ghaziabad and Faridabad
- Well connected to New Delhi, Airport & Railway Station via the DND flyway
- 10* minutes from DND flyway
- 10* minutes from sector 37, metro station
- 10* minutes from sector 18, Noida
- 5* minutes from Mahamaya flyover
- Proximity to FNG Expressway and proposed ISBT

LOCKABLE OFFICE SPACE

YOUR OWN SPACE



- Each floor has a flexibility to accommodate offices with sizes ranging from multiples of 200 & 350 sq. ft. (approx.)
- Designed to cater the needs of corporate world's business and operation requirement
- Utilization of heat reflective glazing
- Modern express elevators enabling minimal waiting time
- Maximum space utilization and efficient design
- Clear vistas and natural light make each office an energized workspace
- Fully monitored security systems



ZRICKS.COM



*Artistic images of lockable office space



ZRICKS.COM



*Artistic images of premium business suites

PREMIUM BUSINESS SUITES

STATE-OF-ART & EFFICIENT SPACES



- Our corporate suites are designed to curtail running costs and capital expense without compromising on world class business facilities
- Limited edition state-of-art office spaces with sizes ranging from multiples of 500 & 750 sq. ft. (approx.)
- Modern amenities like: Integrated conference rooms, Video conferencing facilities
- Internet & Wi-Fi systems, makes it a perfect work space
- 100% power backup
- An inspiring view of a vibrant business environment from the balcony
- Roof top gardens & terrace, act as a place for relaxation
- World class facility management

CENTRADE BUSINESS CENTRE (CBC)

WORKSPACES CREATED FOR THE NEW MILLENIUM



- Efficient space utilization with sizes ranging from multiples of 100 sq. ft. (approx.)
- Environment friendly structure and materials combine technology with nature, reflecting the design aspiration
- Pervasive natural light reduces electrical consumption for lighting and the amount of heat given off by lighting fixtures
- Ideal investment for rental return
- Assured return
- Reception, meeting & conference room, concierge services
- Abundant parking in the double basement and on the ground level



- With a range of facilities and amenities this place is gen-next business park for bank's and ATM space
- Educational, Institutional & world class residential facilities and large corporates in close proximity
- Fully monitored security systems
- 24/7 manned security and CCTV cameras
- Fire detection systems and fighting equipment's
- Scalable car parking

RETAIL & SHOPPING

UNIFIED SHOPPING EXPERIENCE



- Shops ranging from 350, 450 to 1200 sq. ft. (approx.)
- Retail outlets of international and national brands
- Double height retail area on the ground floor overlooking open air courtyard, spread over 17,000 sq. ft. (approx.) to increase visibility
- Retail spaces by way of banking options and food counters, ensuring maximum footfalls
- Open, wide and inviting courtyard with natural light and soothing fountain, creates a perfect ambience.
- Unified site layout with common atrium, connects at various levels
- Area adjoining 45*45 mtr. roads on two sides with a three side open plot
- Adjacent to 11 Group housing projects in sector 137 & near by sector which will boast a potential population of 2.5* Lac (approx) families
- Abundant car space available for surface parking



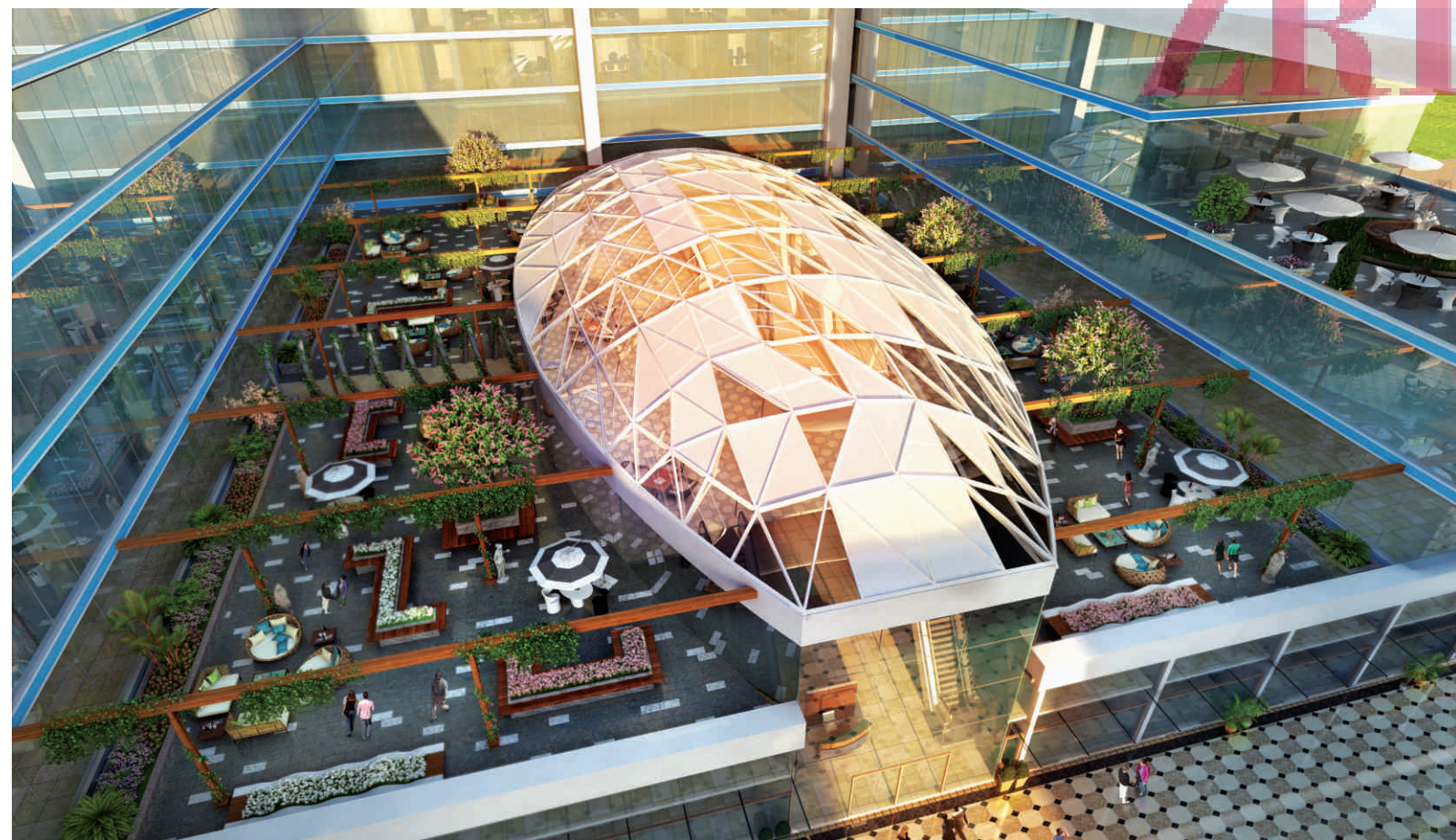
ZRICKS



*Artistic images of retail space



ZBRICKS.COM



*Artistic images of food court

RESTAURANT & FOOD COURTS

WHERE BUSINESS MEET DESIRE



Artistic image



- Exclusive fine dining restaurants to suit your mood and style.
- A wide variety of cuisine with high sitting capacity at the food court with sizes ranging from multiples of 350, 500 & 700 sq. ft. (approx.)
- Rooftop sky lounge, restaurant & bar
- Electro mechanical modern services like 100% power backup, air conditioning, firefighting system etc
- Double height entrance lobby area act as a part of landscaped plaza
- Area demarcated for services. Separate elevators provided for loading and unloading of goods and equipment's.
- Hard and soft landscaping with water bodies, sit outs, and gazebos are designed for a lush open feel, that efficiently handles a large influx of people.

ROOFTOP RECREATIONAL FACILITIES

DE-STRESS YOURSELF



- Sky volleyball Courts
- Cricket Pitch
- SKY Tennis
- Rooftop Basketball Court
- Putting Greens
- Billiards, snooker's & pool

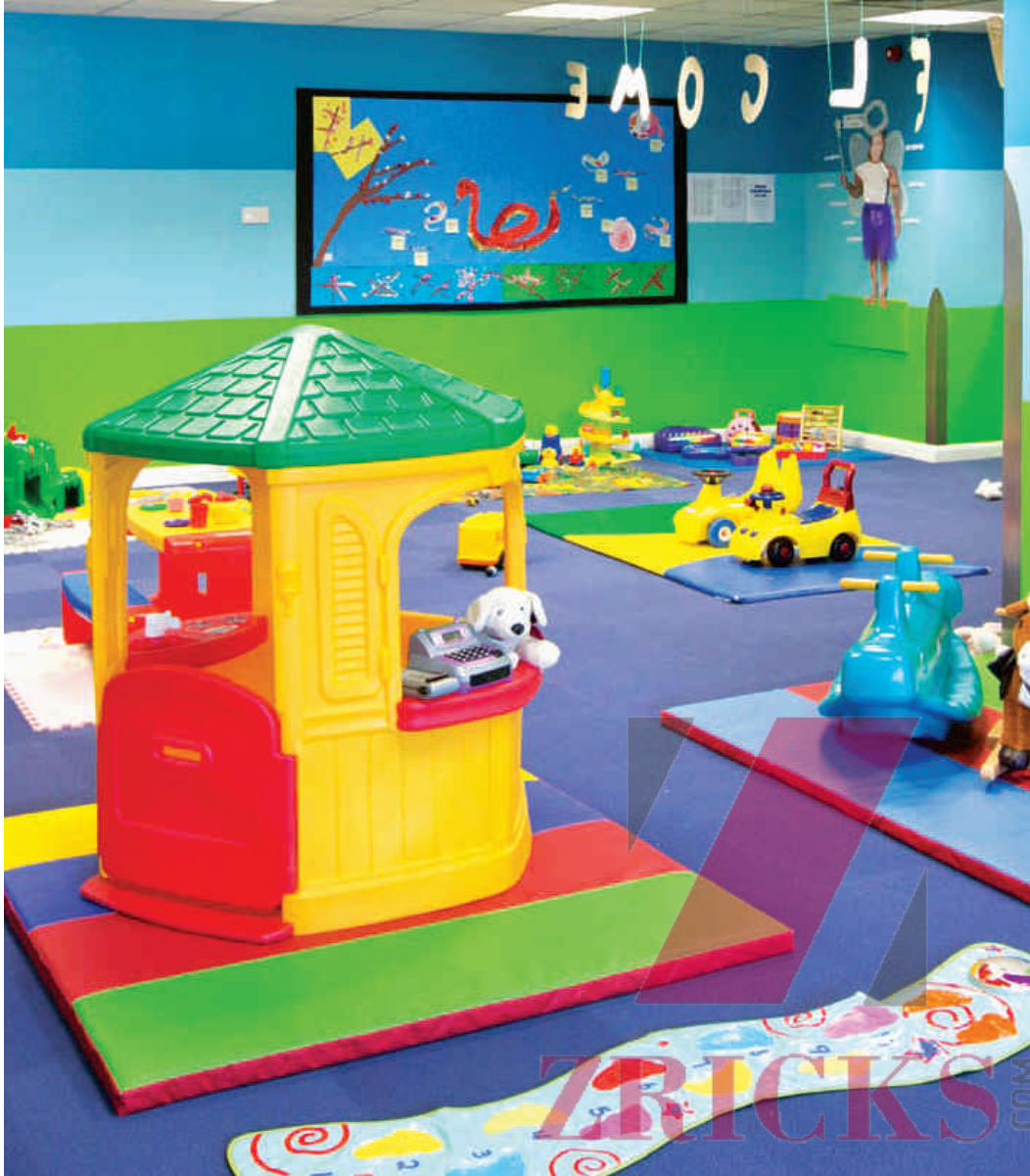
CLUB HOUSE

SPACE FOR EVERYONE



- Indulge, rejuvenate or revive at the end of the day at the magnificent clubhouse.
- This contemporary unique structure in terms of shape, size and design will give it a sense of individuality and identity of its own.
- Your own comfort zone to unwind and socialize with your friends and colleagues
- World class SPA facilities with extensive range of treatments to suit your style
- Fully equipped GYM with latest equipment
- Weekly yoga & aerobics classes
- Indoor & outdoor rooftop swimming pool of international standards

KIDS PLAY AREA & CRECHE



- Fully functional crèche for working couples
- Exclusive Play area for kids
- Fully equipped library
- Personal Attendants



Unveiling the era of workplaces that not only offer you something unique but takes a giant leap in

Redefining the Corporate India!

We are a company with a unique identity, encompassing the entire real estate category in order to promote a vast array of verticals, namely commercial & retail. K rasa group is a new entrant in the Indian Realty sector with an unmatched experience, a group with a large buyer base who has been associated with the group's diversified business. The group will be focusing on launching of multiple projects in Delhi//NCR with its primary focus in Noida.

We aim to be India's leading Real Estate company with a Pan-India Footprint, and be the company of first choice amongst our customers to address their needs across all realty verticals.


Our objective is to satisfy every customer's need for a better experience through quality construction and employee contentment. We are a customer oriented company and we believe in putting in our best foot forward in our journey to the pinnacle. To obtain sustainable development and simultaneously enhancing the values and fulfilling our obligations towards building a better India".

CENTRADE AT A GLANCE

- Green Building featuring healthy environment and enriched human life.
- World Class Infrastructure & Integration of the latest technologies.
- The building is designed by one of the renowned Architect Firm-DFA (Design Forum of Architect).
- Earth-quake resistant structure
- Water harvesting/storage
- Unhindered movement of traffic
- Beautiful Landscaping
- Surface & Multi-level basement parking services
- Provision of access and video surveillance



ZRICKS.COM



Centrade Business Park
Where it all comes together.



ZRICKS.COM



K RASA International Pvt.Ltd.

CORPORATE OFFICE: Matrix Urbtech Tower, Plot no. B-4, 5th Floor,
Sector-132, Noida Expressway, Noida, UP-201304
E-mail: info@krasagroup.com

www.krasagroup.com

*Disclaimer: This info-pack is conceptual and not a legal offer and gives only a bird's eye view of the project. The content in this info-pack, including the payment plan etc. are tentative and are merely indicative in nature and subject to variations and modifications at the sole discretion of the competent, statutory authorities or the company.