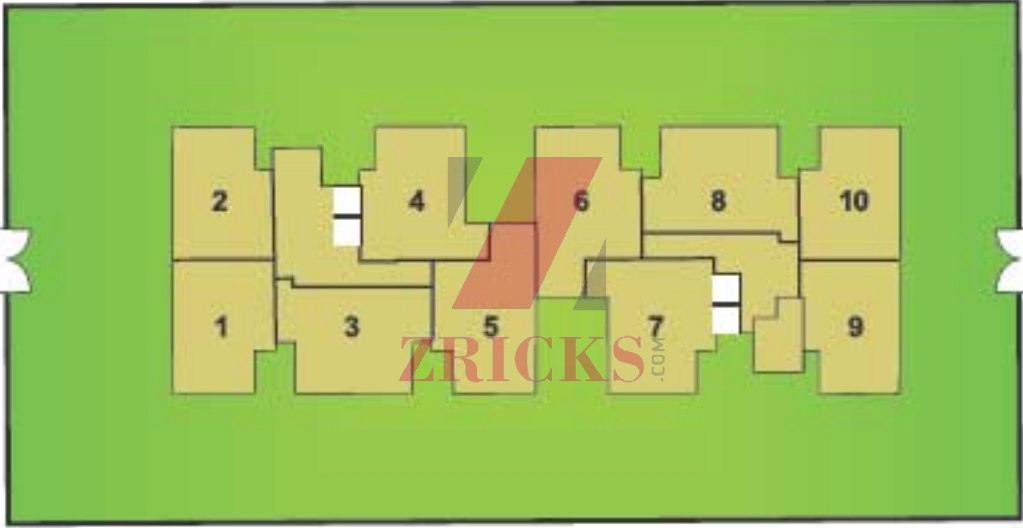




ZTRICKS





# LOCATION MAP

Not to scale, indicative only



Quantum Residency



ZRICKS.COM

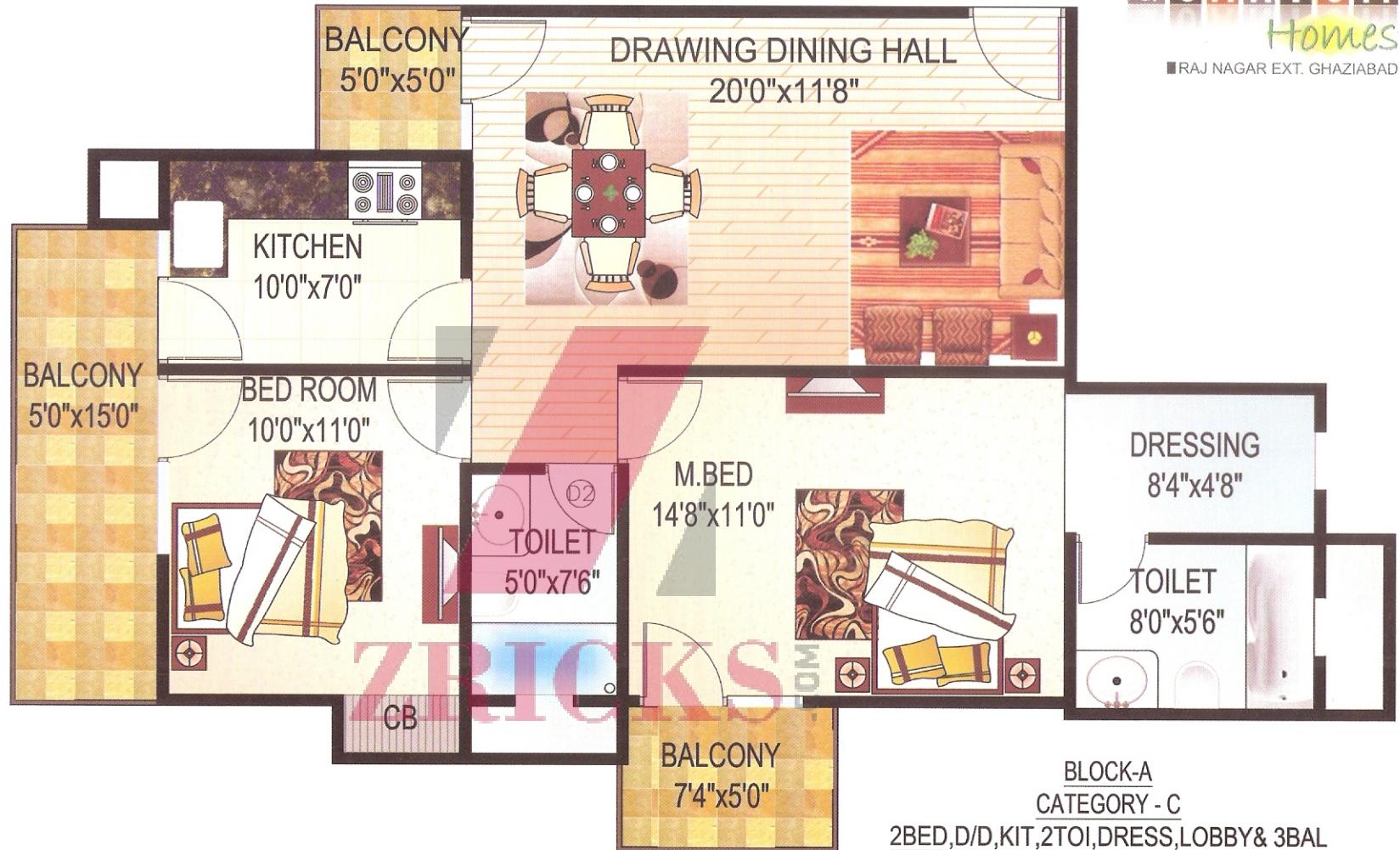








**BLOCK-A**  
**CATEGORY - B**  
**2BED, D/D, KIT, 2TOI, STORE & 4BAL**  
**SUPER AREA=1172 SQFT**



BLOCK-A  
CATEGORY - C  
2BED, D/D, KIT, 2TOI, DRESS, LOBBY & 3BAL  
SUPER AREA = 1230 SQ.FT







## RATE LIST

Rate	: Rs. 2075/- (C.L.P.)
Rate	: Rs. 1975/- (FLEXI)
Rate	: Rs. 1875/- (D.P)

## ADDITIONAL CHARGES

Ground Floor	: Rs. 125/- Per Sq.ft.
First Floor	: Rs. 100/- Per Sq.ft.
Second Floor	: Rs. 75/- Per Sq.ft.
Third Floor	: Rs. 50/- Per Sq.ft.
Fourth Floor	: Rs. 25/- Per Sq.ft.

### \*PLC for Preferential Location (Applicable on all floors)

Corner	: Rs. 50/- per sq.ft.
Outer Road Facing	: Rs. 50/- per sq.ft.
Park Facing	: Rs. 50/- per sq.ft.

## ZRICKS PARKING CHARGES

Covered	: Rs. 1,75,000/- Each
Open	: Rs. 1,00,000/- Each

\*one parking mandatory

External Electrification Charges (EEC)	: Rs. 35/- Per Sq.ft.
Fire Equipment Installation Charges	: Rs. 35/- Per Sq.ft.
Club Membership Charges	: Rs. 35,000/- (One Time)
Power Back-up System Installation	: Rs. 20,000/- Per KVA
Additional Development Charges (ADC)	: Rs. 120/- Per Sq.ft.





ZIRICKS

# SPECIFICATIONS

**Structure** : Earth quake resistant RCC framed structure.

## Wall Finish

- Living / Dining / Bedrooms: Painted in pleasing shades & oil bound design prints.
- Lift Lobbies: Selected Marble / Granite cladding / Acrylic paint.
- External: Combination of stone / textured paint finish.

## Flooring

- Living / Dining / Bedrooms: Designer Marble / Vitrified tiles all over the unit.
- Lift Lobbies: Selected Granite / Marble.
- Balcony: Anti skid ceramic tiles / Marble tiles.
- Terrace: Terracotta tiles.

## Kitchen

- Flooring: Ceramic tiles / Marble.
- Platform Board: Granite counter with single bowl stainless steel sink
- Walls: 2 ft. ceramic tiles dado above working platform.
- Fittings: Standard C.P. fittings.

## Toilets

- Flooring: Ceramic tiles / Marble tiles.
- Fittings: White sanitary fixtures CP fittings of standard make.
- Walls: Ceramic tiles up to 7' height.

**Electrical Works** : Electrical installation in concealed conduit with copper wire.

**Doors** : Seasoned hardwood frame, finished doors.

**Windows** : Seasoned hardwood frame and panels.

**Power Backup** : On payment basis.

**Fire Fighting** : As per prescribed norms.

**Open Area** : Ultramodern lighting system to beautify and illuminate.

**Water Supply** : Filtered water supply through centralized filtration plant.

**Safety & Security** : Round the clock security.