

Skytech

Matrott

Sector-76, Noida



RECKSE



Skytech Matrott is a residential property located in Sector 76, Noida, Uttar Pradesh. It offers 2 BHK, 3 BHK and 4 BHK apartments that range from 1015 sq. ft. to 2340 sq. ft. in area. Each of the flats in Skytech Matrott has been well designed to make sure that each of the flats offers a combination of space and functionality.

Project USP

- Plans approved by the Noida Authority
- Excellent connectivity thanks to the wide roads leading up to the project.
- An exclusive club house with a gym to ensure the health of the residents
- 24x7 secure with state of the art equipment to ensure peace of mind
- 100% power back up for each floor in the unlikely event that power does go out
- Landscaped green spaces that will provide an ideal space for the residents to relax and unwind
- The entire project has Wi-Fi connectivity that ensure that the residents are always connected



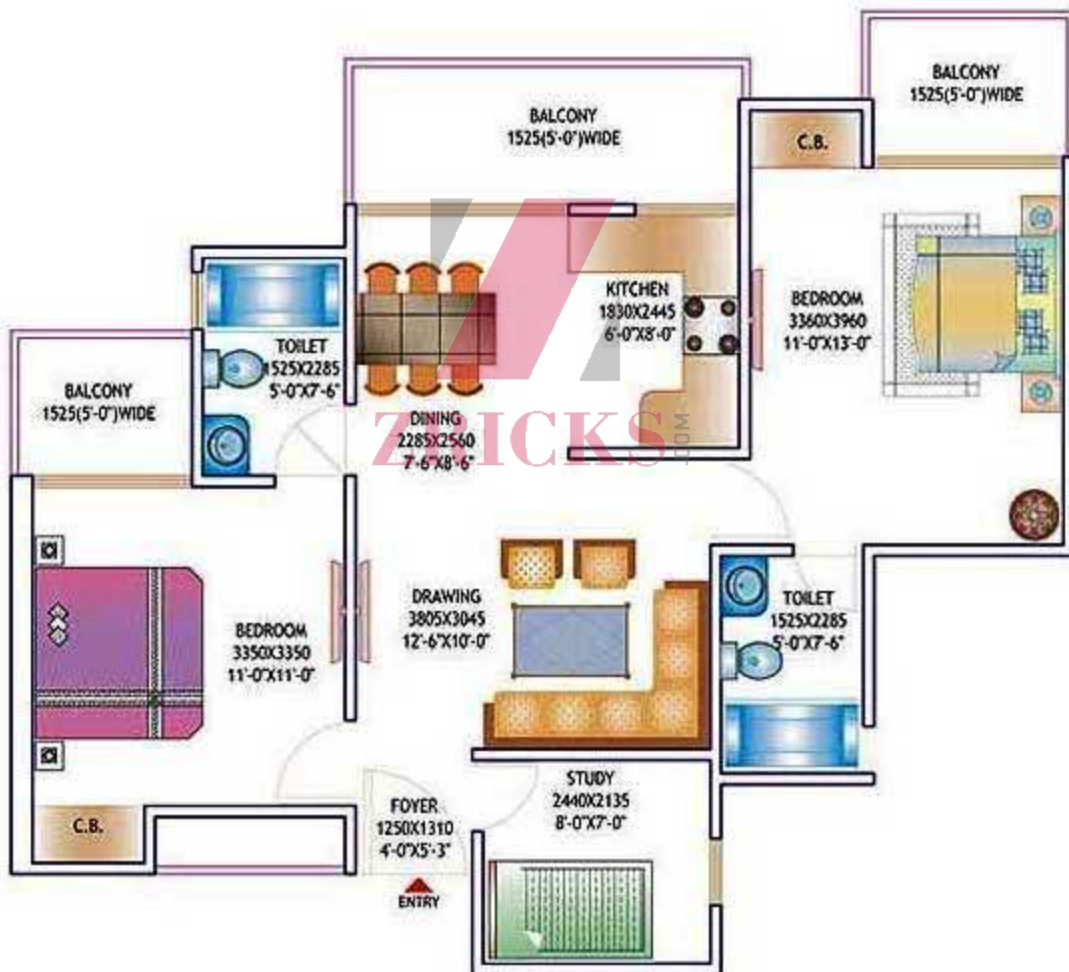
Skytech
Matroti
Sector-76, Noida

ZBRICKS.COM

2 Bedroom

+ 2 Toilet + Study

Saleable Area - 1150 sq. ft.

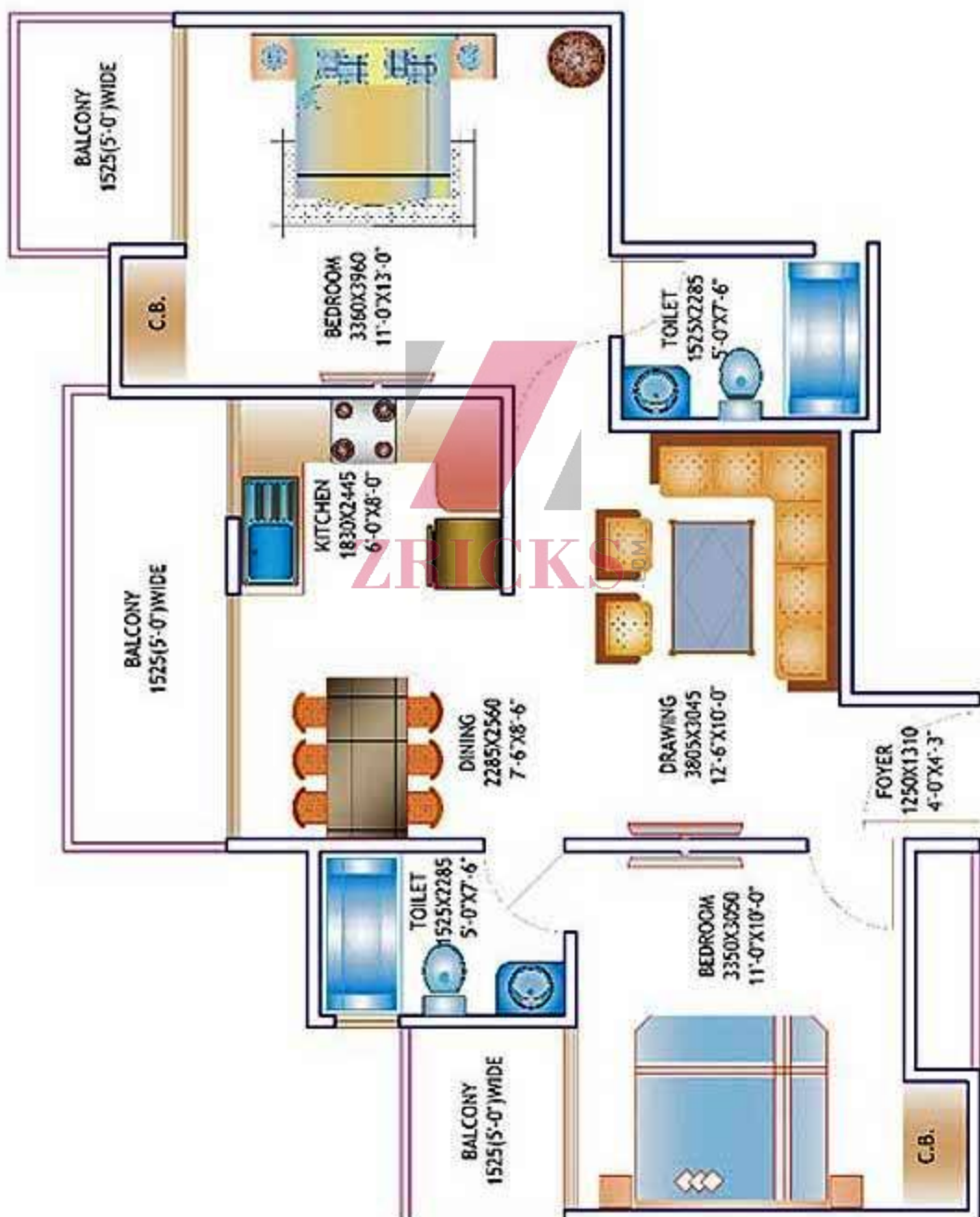


2 Bedroom

+ 2 Toilet

Saleable Area - 1015 sq. ft.

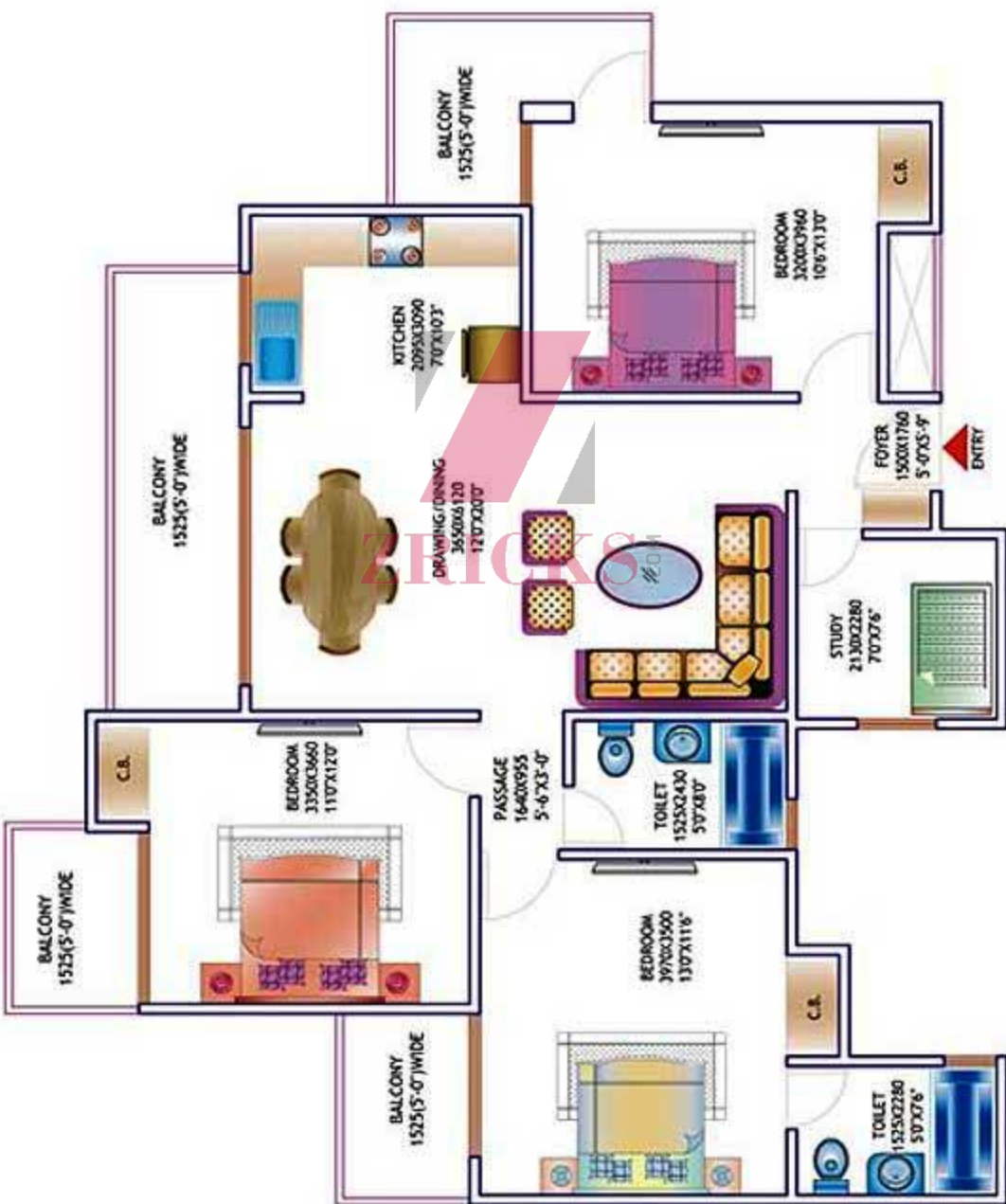
Super Area - 1015 sq. ft.



3 Bedroom

+ 2 Toilet + Study

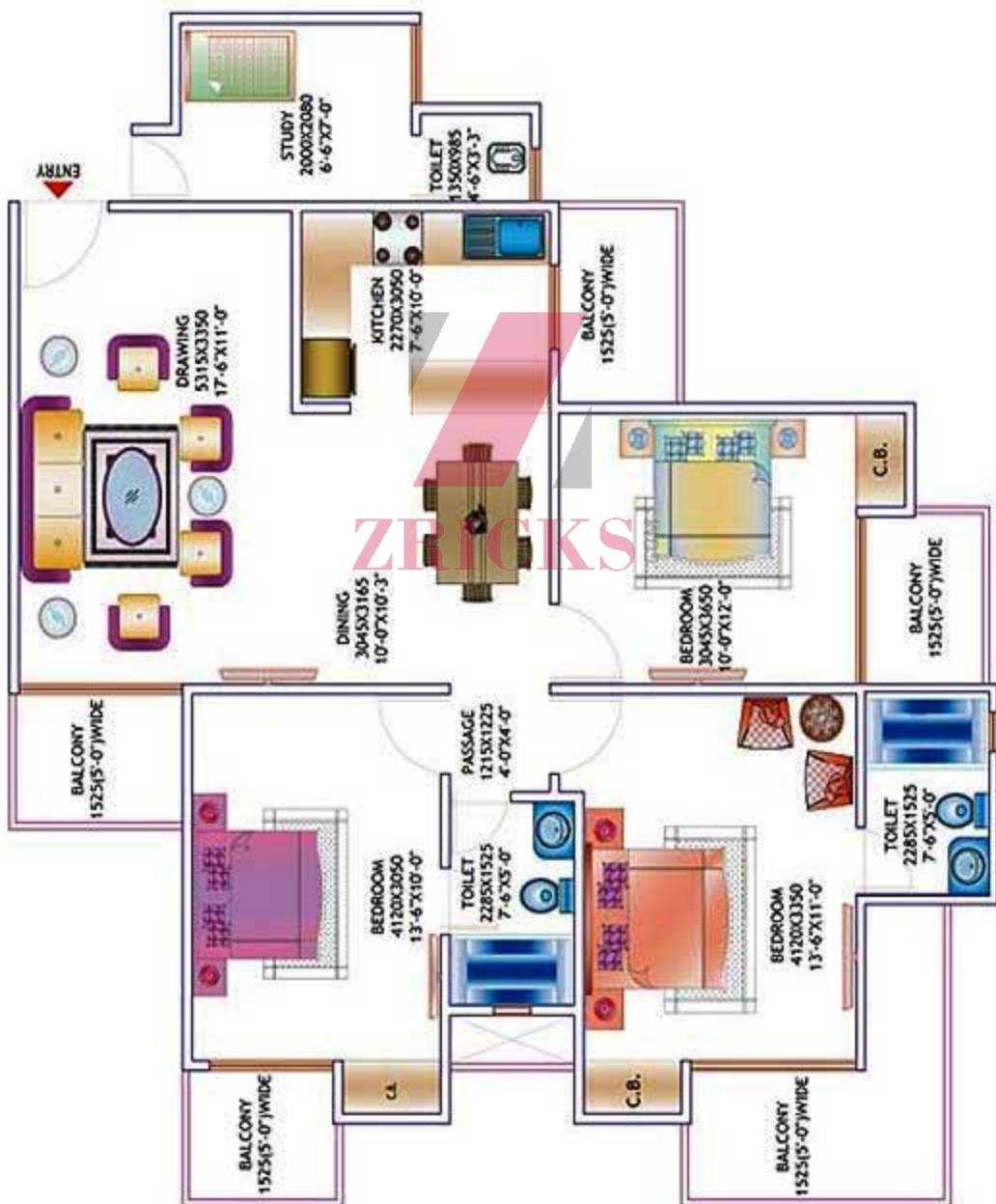
Saleable Area - 1535 sq. ft.



3 Bedroom

+ 3 Toilet + Study

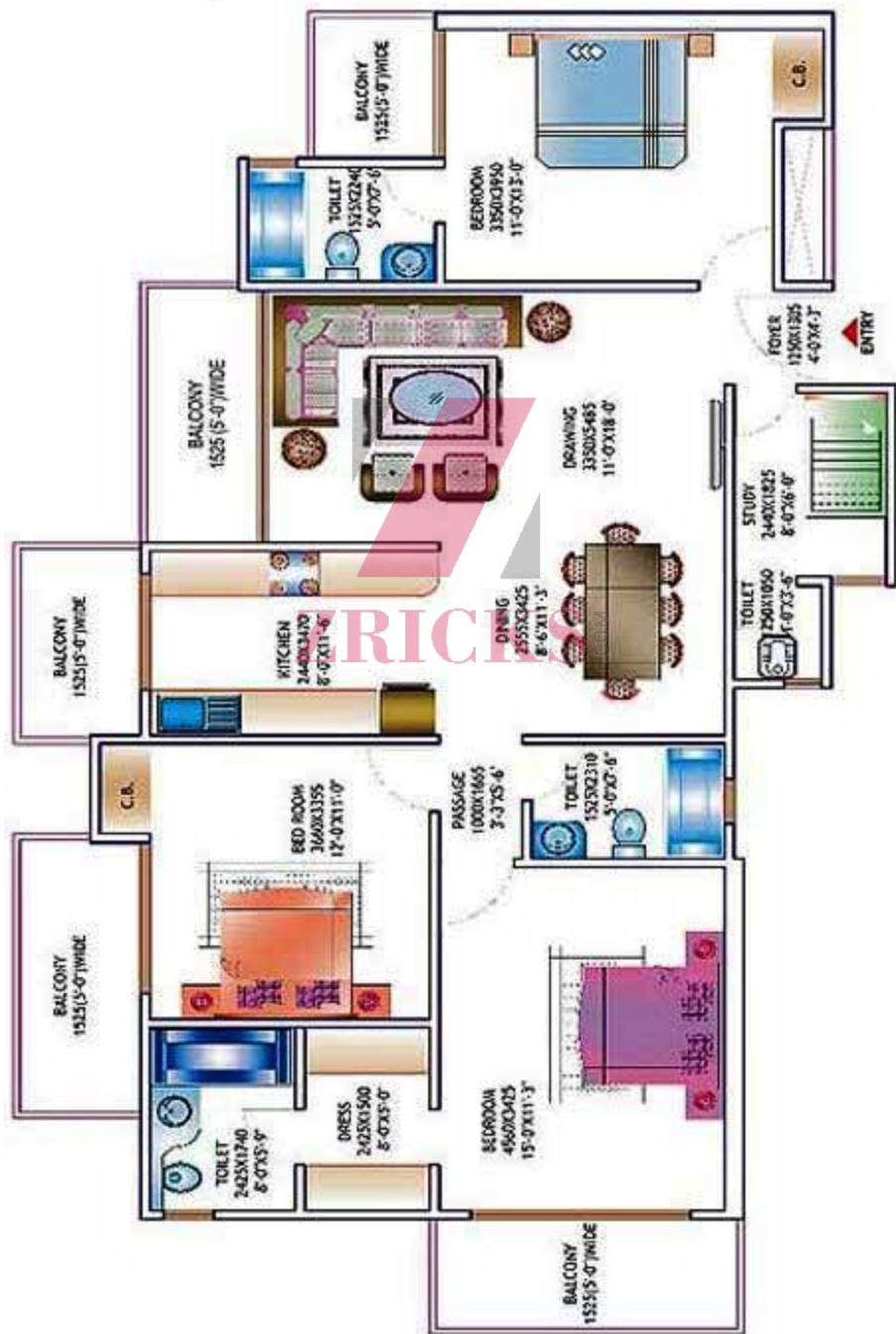
Saleable Area - 1645 sq. ft.



3 Bedroom

+ 4 Toilet + Dress + Study

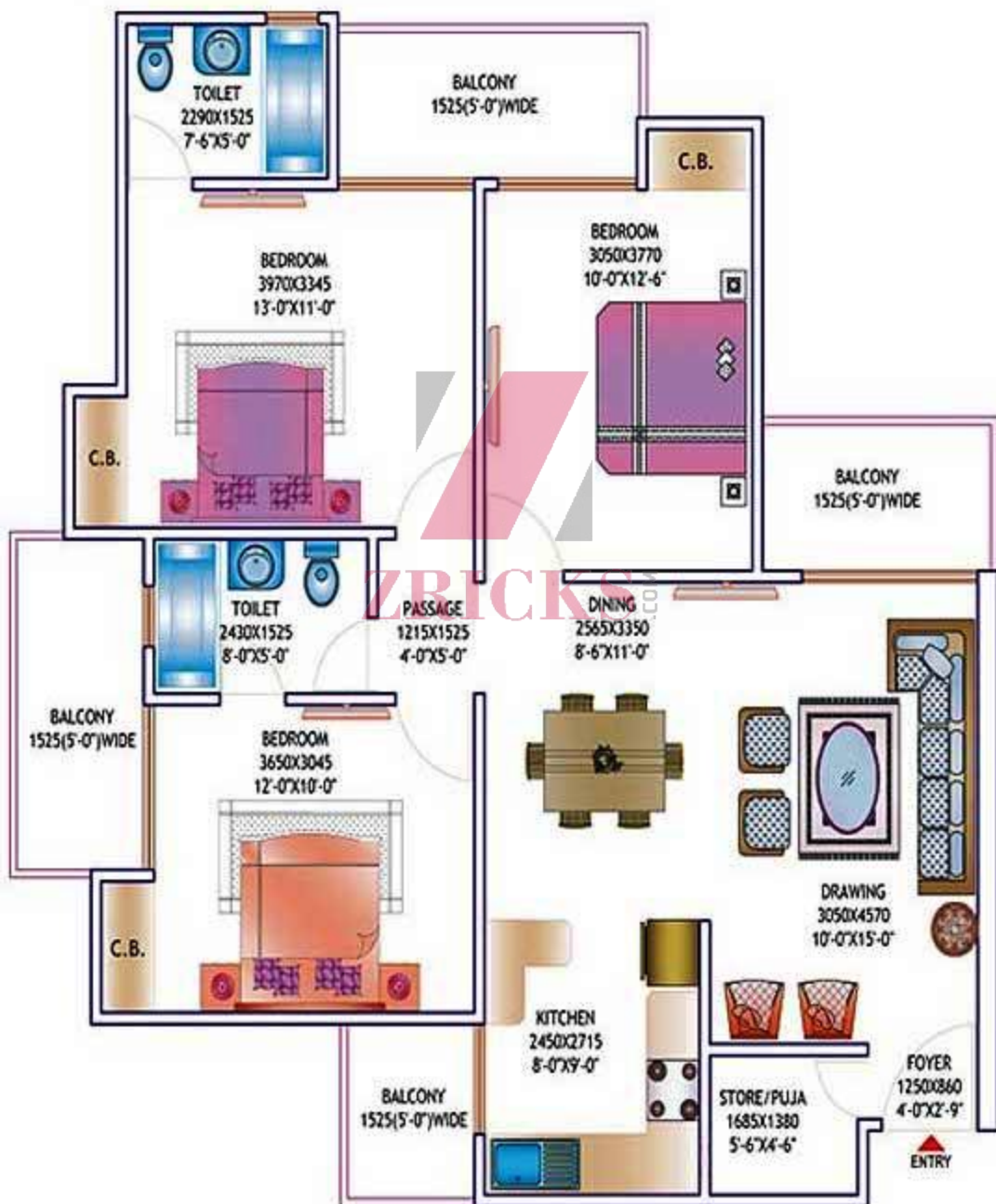
Saleable Area - 1860 sq. ft.



3 Bedroom

+ 2 Toilet + Puja

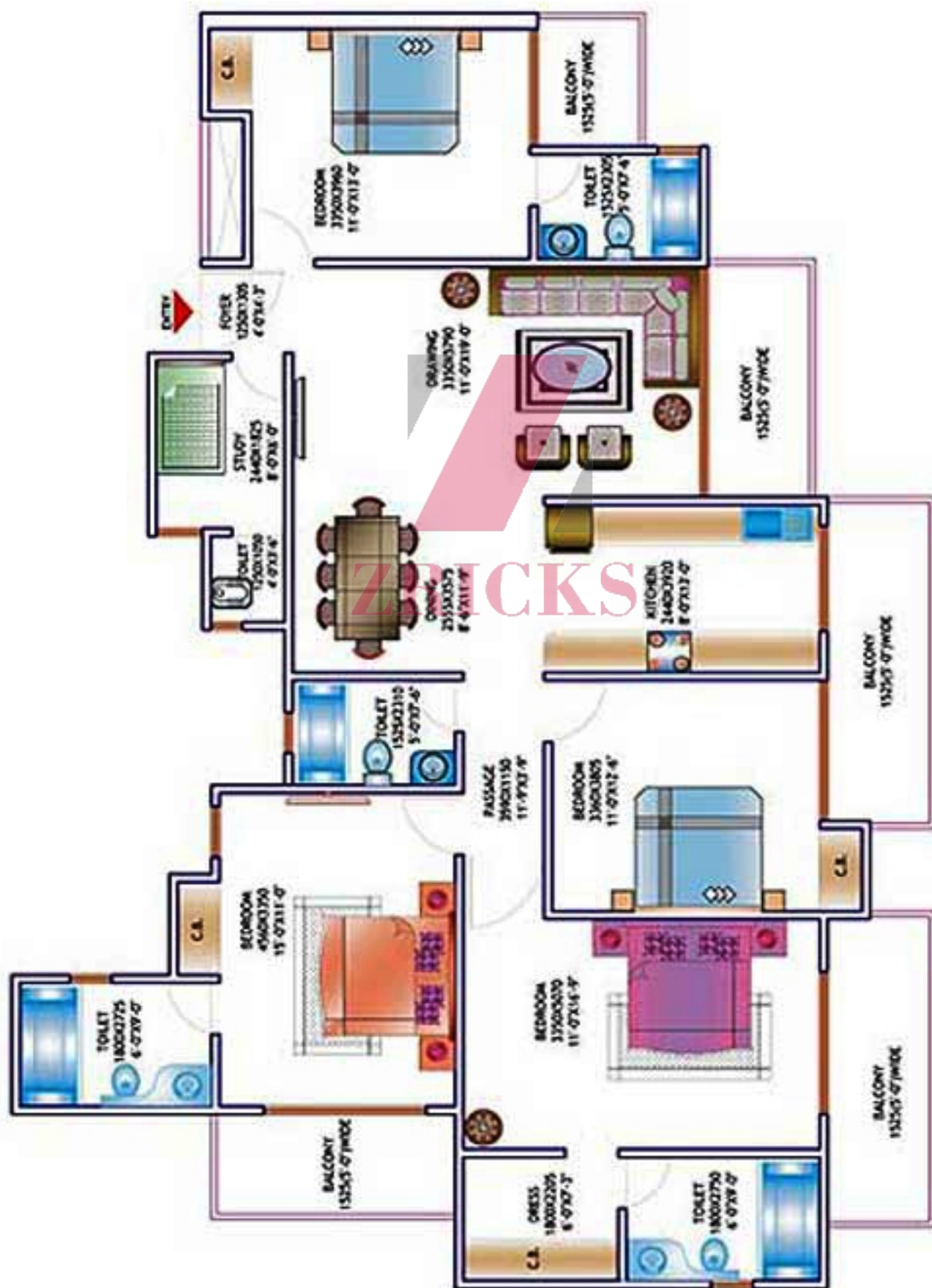
Saleable Area - 1455 sq. ft.



4 Bedroom

+ 4 Toilet + Dress + Study with Toilet

Saleable Area - 2340 sq. ft.



Site Layout Plan

SEC. 75



45 M WIDE ROAD

45 M WIDE ROAD



ROAD



ZBRICKS.COM

Structure :	Earthquake – resistant, R.C.C. frame structure designed by IIT Engg.(as per IS codes)
Flooring :	Vitrified tiles of (size 2'x2') of Kajaria or Equivalent in Drawing, Dining, Kitchen passage & Bed Rooms, Laminated Wooden Flooring in Master Bedroom and Dress room. Antiskid ceramic tiles in toilets & Balconies.
Painting :	Oil bound distemper with pleasing shades on the apartment walls.
P.O.P. :	Designer P.O.P. in drawing & bedrooms.
Dado :	Glazed / Ceramic tiles up to 7 feet in the bathrooms in different colors.
Exterior :	Permanent finish.
Kitchen :	Slabs are of well-finished granite stone with stainless steel sink and drain board. Glazed tile dado on wall up to 2 ft. over counter. Complete modular kitchen with R.O. plant.
Doors & Windows :	O.S.T. Teak windows with ISI fitment. Teak flush doors.
Bathrooms	Equipped with ISI Standard washbasins, Mirrors and WCs in varied shades. Chrome plated tap fittings of standard make. Shower Panel.
Electrical :	Electrical (copper) wiring as per ISI code with Modular switches. Circuits with MCBs of approved make. TV and telephone points in every room.

