

— JAIDEV INFRA TECH (P). LTD. —

# ANIPARK

Plot No. INS-02, CHI V, Yamuna Expressway, Gr. Noida

ZBRICKS.COM

• BUSINESS SPACES • RETAIL • RESIDENTIAL

ARCHITECT

ARCOP



ZRICKS.COM

*Welcome*  
The all new world of **UNIPARK**

A Unipark has been designed to deliver the finest experience of urban living & working, located in the heart of rapidly developing Greater Noida. A Unipark is an ideal blend of Residential, Commercial and Retail Spaces, offering the levish view of the Taj Expressway strategically placed at the origin of Yamuna Expressway. A Unipark falls within the frame work of the world class infrastructure & civic amenities.

“ Mr. Ashok Bhati is the founder of Jaydev Infratech Pvt. Ltd., Jaydev Propmart Pvt. Ltd. and A K Cine international. He has been associated with the Real Estate industry for over 15 years and is responsible for the growth of the Jaydev Group of Companies . He is promoting real estate industry as a financier and marketing counsellor to Omaxe , AMR, Basin Group, Earth Infratech, Proview, and J P Green. He has been associated with the construction industry over 10 years and delivered following projects- Informatic Society, CGHS Society and Vedantam with Limbra Construction Pvt Ltd. ”



DAY VIEW  
artistic impression



All specifications, designs, layout, images, conditions are only indicative and some of these can be changed at the discretion of the builder/architect/authority. These are purely conceptual and constitute no legal offerings.

ZICKS

NIGHT VIEW  
artistic impression



All specifications, designs, layout, images, conditions are only indicative and some of these can be changed at the discretion of the builder/architect/authority. These are purely conceptual and constitute no legal offerings.





ZRICKS

## What ? We Offering...

- Retail Shops
- Service Apartments
- Bank's & Atm's
- Restaurant & Food Court
- Corporate Suites
- Furnished & Unfurnished Offices



## COMMERCIAL SPACES

- Modern amenities like, Integrated conference rooms, Video conferencing facilities
- Internet and Wi-Fi systems, makes it a perfect work space.
- 100% power backup - World class facility management
- Roof top gardens & terrace , acts as a place for relaxation

### PREMIUM BUSINESS SUITES



### RETAIL SHOPS



- Retails outlets of international and national brands
- Retail spaces by way of banking options and food counters , ensuring maximum footfalls
- Adjacent to 13 group housing projects at Chi V which will boast a potential population

- Each floor has the flexibility to accommodate office with sizes ranging from 300-2000 sq.ft.
- Designed to cater the needs of corporate world's business and operational requirements
- Modern express elevators enabling and efficient and efficient design
- Fully monitored security systems - Ideal investments to rental return - Assured Return

### LOCKABLE OFFICE SPACE



### CLUB HOUSE



- Indulge , rejuvenate or revive at the end of the day at the magnificent clubhouse
- Your own comfort zone to unwind and socialize with your friends and colleagues
- Fully equipped GYM with latest equipments
- Indoor and outdoor rooftop swimming pool of international standards

ZRICKS.COM

- With a range of facilities and amenities this place is gen-nex business park for **BANK'S AND ATM** space
- Educational, Institutional & world class residential facilities and large corporate in close proximity
- Fully Monitored security systems - 24/7 manned security and CCTV Cameras

### BANK / ATM's



### RESTAURANT & FOOD COURT

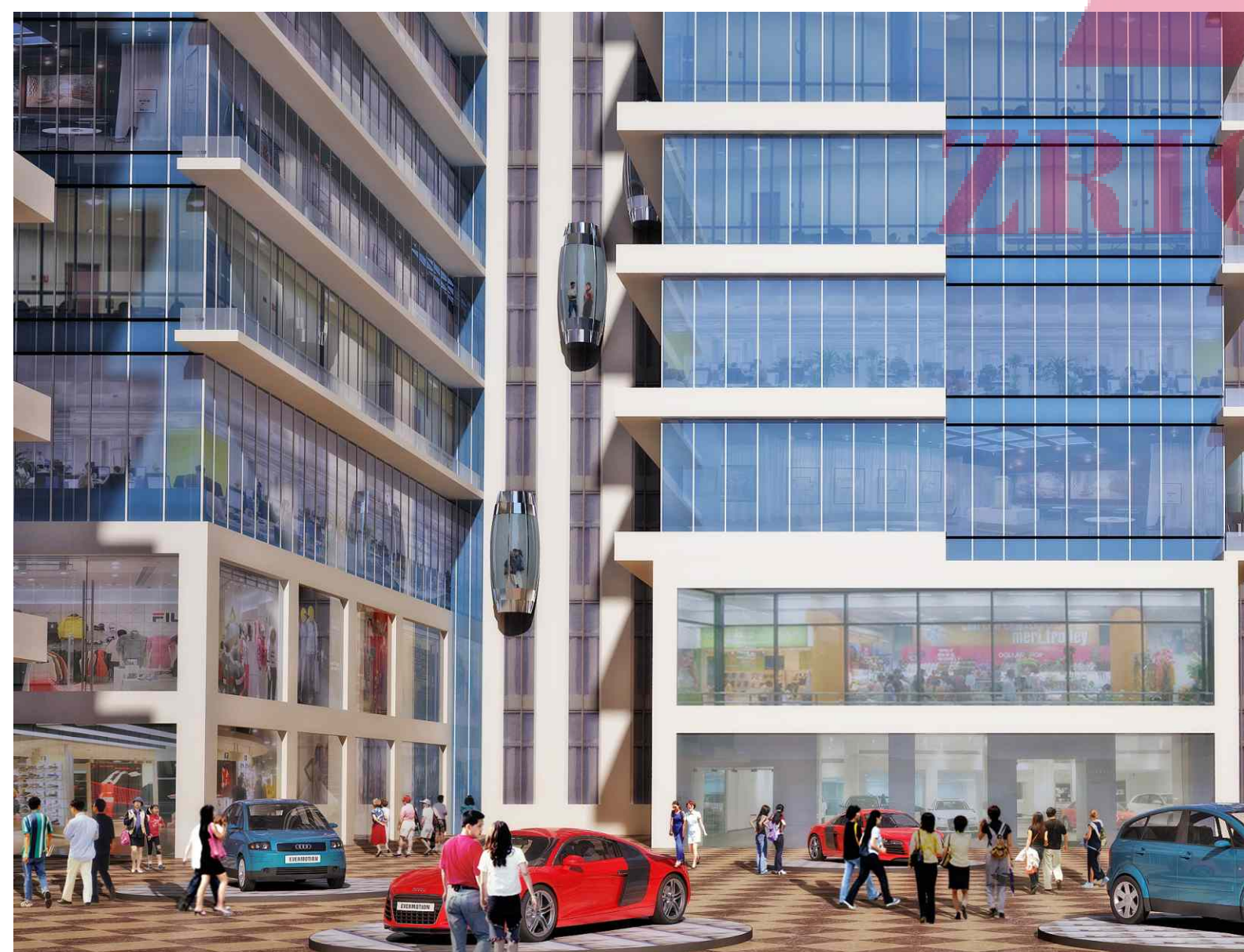


- Exclusive fine dining restaurants to suit your mood and style
- A wide variety of cuisine with high sitting capacity at the food court
- Electro mechanical modern services like 100% power backups, air conducting , firefighting system etc
- Area demarcated for the services separate elevators provided for loading of goods and equipments
- Hard and soft landscaping with water bodies , sit outs and gazebos are designed for a lush open feel, that efficiently handles a large influx of people

Highest level of operations will ensure that workspaces run without interruptions or inconvenience. Let all your energies be directed towards running your business and building the kind of reputation your organisation deserves.

Power 24x7, Professional facilities, Self contained civilization it's what you want is what you'll get !





All specifications, designs, layout, images, conditions are only indicative and some of these can be changed at the discretion of the builder/architect/authority. These are purely conceptual and constitute no legal offerings.

All specifications, designs, layout, images, conditions are only indicative and some of these can be changed at the discretion of the builder/architect/authority. These are purely conceptual and constitute no legal offerings.



Jaydev Infratech is coming with Ultra-Luxury apartments on YAMUNA EXPRESSWAY AT SECTOR CHI V. Accompanied with offices facility with retail and apartments to fulfill the rising demands of corporate.

**A work-at-home concept with all modern amenities and facilities.**

Wake up in a cozy bedroom, greet the beautiful surroundings from your extended balcony, take a shower in a modern bathroom, cook your favourite meal in the kitchenette and enjoy it in the living area/dining room.

**Studio Apartment Specifications**

- Energy efficient independent air conditioning
- Designer double bed & sofa set
- Modular bathroom fitting
  - Branded cook top
- LCD TV in each studio flat
- Designer lights and fans
- Chimney - Rod with curtain - Indoor plants
- Vitrified flooring ornamental false ceiling
- Designer wardrobe
- Complete power backup
- R.O system - Refrigerator - Modular kitchen



**Amenities**

- Club house
- Car parking
- 24\*7 power supply
- Ample parking space, two level podiums
- Earthquake resistant structure
- 24 X 7 Water supply and power back up for common facilities
- Swimming pool with gymnasium
- Yoga and aerobic hall
- Spa with sauna, steam and jacuzzi
- Security & fire safety systems







**1 BHK**  
Super Area : 696.11 Sq.Ft.

**2 BHK (Corner Unit)**  
Super Area : 1087.59 Sq.Ft.



**ZRICKS**  
Super Area : 1620 Sq.Ft.



**2 BHK**  
Super Area : 1040.05 Sq.Ft.

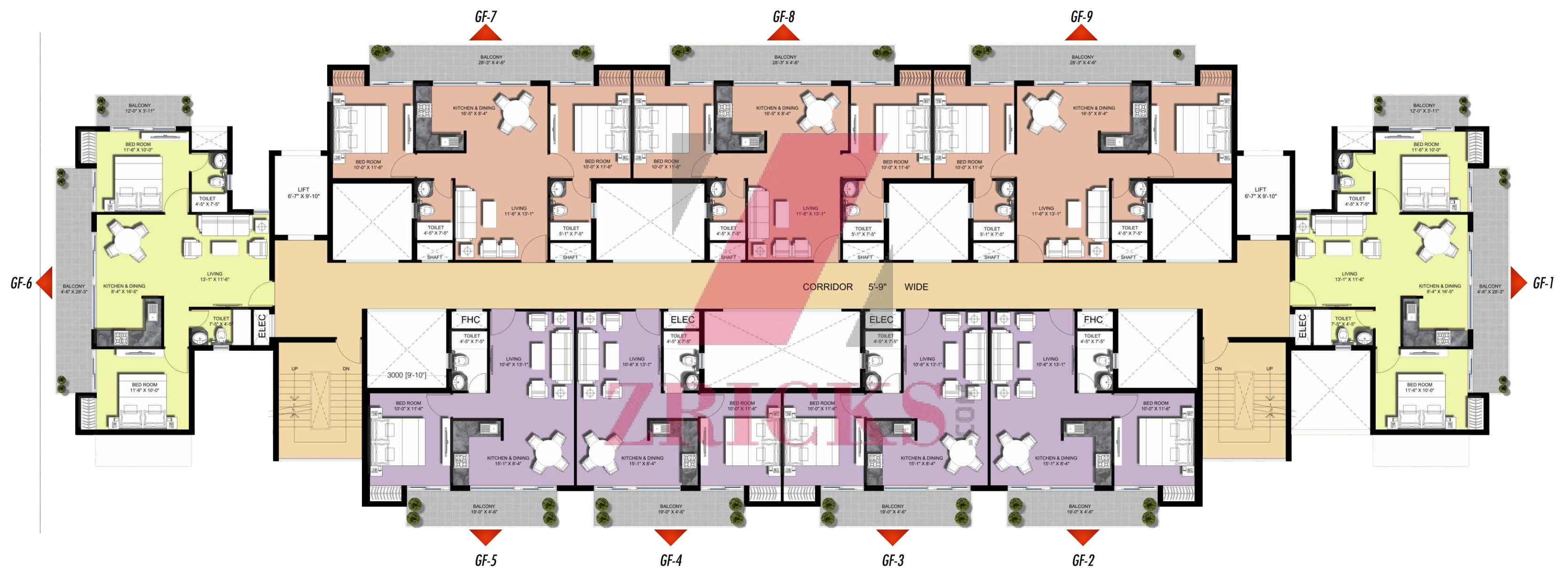


**3 BHK**  
Super Area : 1620 Sq.Ft.



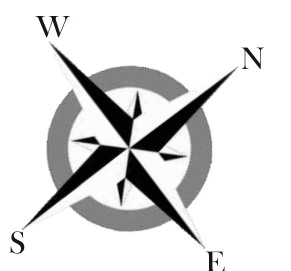
# TOWER A & C

- ONE BHK UNIT
- TWO BHK UNIT
- TWO BHK CORNER UNIT





- ONE BHK UNIT
- TWO BHK UNIT
- THREE BHK UNIT





# SITE PLAN



Disclaimer: Builtup Area including apportioned common of Project. All specifications, designs, layout, images, conditions are only indicative and some of these can be changed at the discretion of the builder/architect/authority. These are purely conceptual and constitute no legal offerings. 1sqm = 10.764 sq. ft., 304.8 mm=1'-0"





LINIPARK

# AIRIAL VIEW

OFFICE SPACE

TOWER C

TOWER B

TOWER A

RETAIL SHOPS

FOOD COURT

Inspire your people,  
enhance your corporate reputation  
and fix your space crunch,  
all in one brilliant move.

Our intention is to overshadow every other corporate  
workspace through our constant efforts  
towards excellence... surely in no time we will  
succeed by a wild mile.

Disclaimer: Builtup Area including apportioned common of Project. All specifications, designs, layout, images, conditions are only indicative and some of these can be changed at the discretion of the builder/architect/authority. These are purely conceptual and constitute no legal offerings. 1sqm = 10.764 sq. ft. 304.8 mm = 1'-0"



Jaydev Infratech - a name symbolizing trust and reliance, one which believes in quality, commitment, ethics and vision. Jaydev Infratech nurtures satisfaction beyond comparison to its clients by building relationships, providing sincere services and creating precious assets for them.

The innovative approach of the group has added new dimensions to the real estate market of Delhi/ NCR. We have blended quality and comfort to create an ideal package for the client at the best possible prices thus realizing our ultimate aim of providing for value for money. The projects commissioned by Jaydev Infratech are a symbol of precision, international quality and a perfect amalgamation of functionality and aesthetic. Each project is an edifice in itself, attribute to modern architecture symbolizing the fusion of mystic past and grand future.

Jaydev Infratech's strong team with a commitment, vision and experience will generate comprehensive solutions for the people in terms of Commercial spaces & Residential apartments. The projects commissioned by the Group justify that the present and future needs of the people have been addressed in the most appropriate manner. It is their far sightedness, innovativeness, quality execution that has won them numerous accolades for all their ventures. Jaydev Infratech is now geared up to bring a paradigm shift in lifestyles of the Delhi/ NCR through their world class endeavors.

Jaydev Infratech strives to become the most successful and respected real estate company in pan-India era by earning the client's appreciation, loyalty and trust by continuously working using the sound principles of integrity, business ethics, product innovation and contribution of committed work force. This enables us to take the standard of living to the next level.

Jaydev Infratech's mission is to create world-class infrastructure in various sectors of Real Estate and strive to fulfill the ambitions of our clients. With 15 years of valuable experience in the real estate industry, we will execute this consistently with the highest level of commitment, integrity, transparency and safety standards seeking to maximize efficiency. Jaydev Infratech aims to nurture, groom and develop its employees at all levels personally and professionally so that they excel in all fields and turn out to be contributing citizens to the community as well as brand ambassadors for us.

## UNIPARK LOCATION MAP



### Location Advantages

- Yamuna Express Way 0 Min.
- Botanical Garden Metro Station 25 Min.
- Gautam Buddha University, Greater Noida 04 Min.
- FNG Corridor 05 Min.
- Pari Chowk, Greater Noida 02 Min.
- DND18 Min.
- South Delhi 32 Min.
- ISBT Delhi 45 Min.
- Connaught Place 45 Min.
- Proposed Metro Station, Opp Greater Noida Expo mart 2 Mins