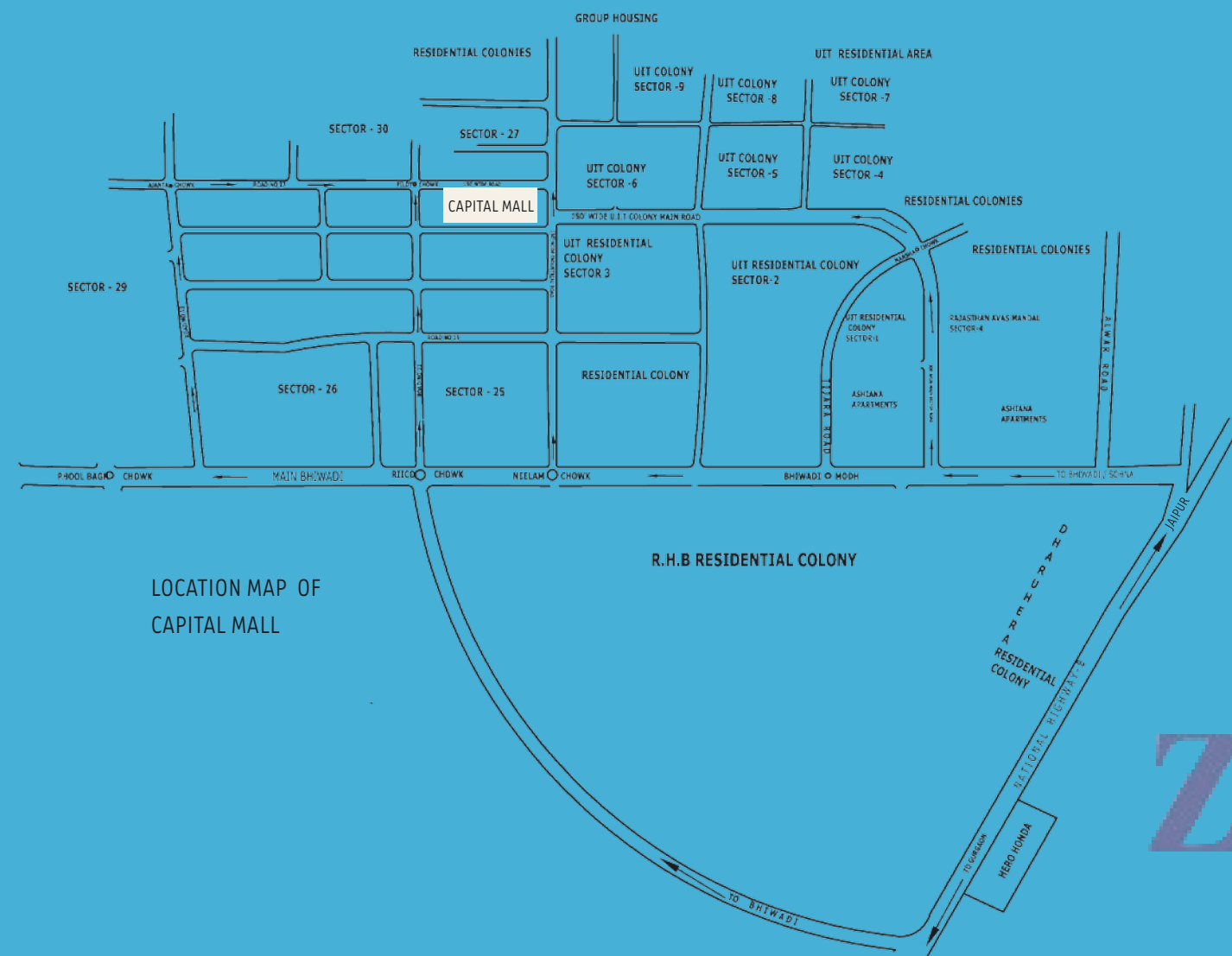


*The best of retail, entertainment and hospitality under one roof!*



BROUGHT TO  
YOU BY R-TECH  
DEVELOPERS

# Capital Mall

## BHIWADI

**ZRICKS** PROJ.

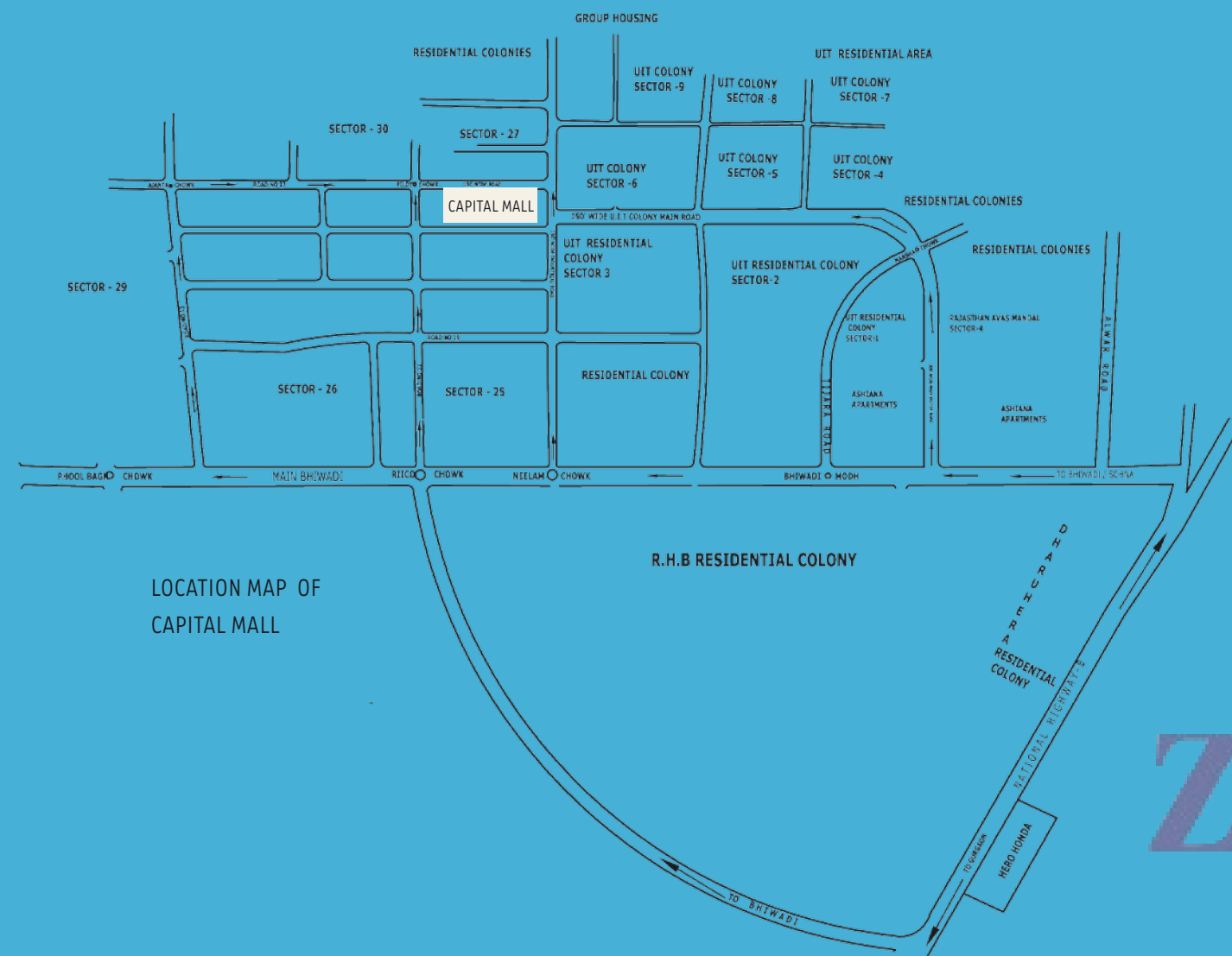
R-TECH DEVELOPERS PVT. LTD.

Corporate Office

G 314 - 316, First Floor, Sushant Shopping Arcade, Sushant Lok I, Gurgaon 122002, Haryana  
tel 0124 404 5300 / 5400 / 5700 fax 0124 404 4200 email [rtechdevelopers@gmail.com](mailto:rtechdevelopers@gmail.com)  
mob 9971922112 / 113 / 114

*A business opportunity with a rewarding  
investment potential in the heart of Rajasthan's  
industrial and commercial capital.*

*The best of retail, entertainment and hospitality under one roof!*



LOCATION MAP OF  
CAPITAL MALL

BROUGHT TO  
YOU BY R-TECH  
DEVELOPERS

# Capital Mall

## BHIWADI



*A business opportunity with a rewarding  
investment potential in the heart of Rajasthan's  
industrial and commercial capital.*

R-TECH DEVELOPERS PVT. LTD.

Corporate Office

G 314 - 316, First Floor, Sushant Shopping Arcade, Sushant Lok I, Gurgaon 122002, Haryana  
tel 0124 404 5300 / 5400 / 5700 fax 0124 404 4200 email [rtechdevelopers@gmail.com](mailto:rtechdevelopers@gmail.com)  
mob **9971922112 / 113 / 114**



*R-tech welcomes you to Bhiwadi,  
the industrial capital of Rajasthan.*

ZIRICKS.COM

Capital Mall  
BHIWADI

## Pride of the NCR

Bhiwadi is a growing industrial town in the NCR which is situated on the border between the states of Rajasthan and Haryana.

The Bhiwadi sub-region plays a major role in the economic development of Rajasthan and the country as a whole. It has over 1000 small, medium and large scale industries, which also include Multi National Corporations and Industrial Units manufacturing a variety of products. Industries vary from steel, furnace, electronics, engineering, textiles, and pharmaceuticals to printing, cables, rolling mills, food processing, herbal care and so on.

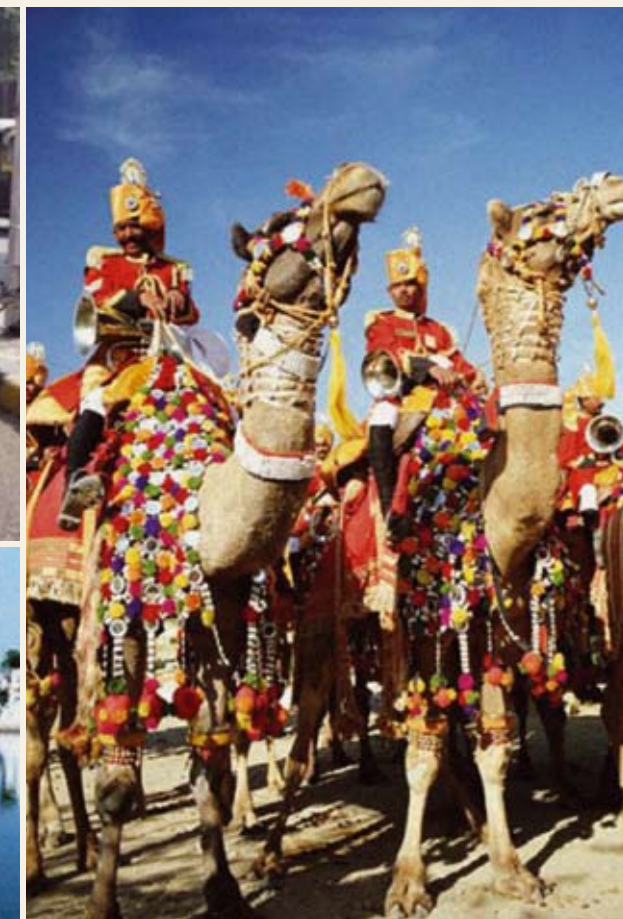
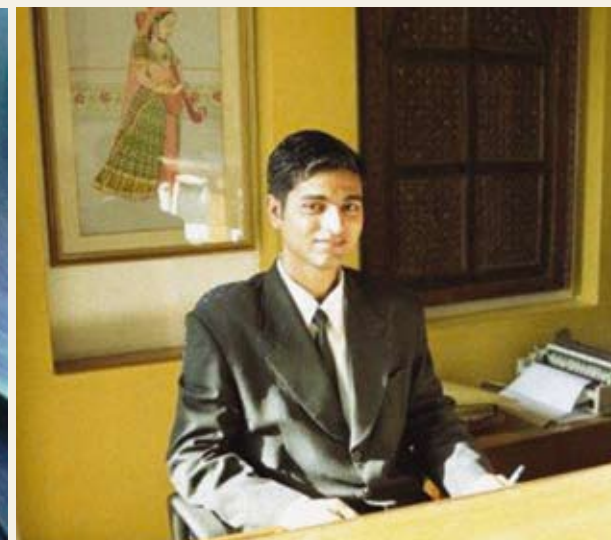
*R-tech invites all those with the passion for enterprise whether in the field of retail, entertainment or hospitality.*

## The Town of Bhiwadi

Bhiwadi has location advantages of being very near to the capital of India - Delhi, and being well connected by the National Highway 8 (NH8) as well as the Kundli Manaser Palwal (KMP) expressway. As a result of this, it is attracting large and small industrialists from Delhi and the NCR, as well as from the states of Punjab, Haryana and Rajasthan.

Bhiwadi has a good road network throughout the town, uninterrupted power supply and very low levels of pollution. Trends also show that propensity to spend in these regions is on the rise.

*With an excellent location that is in proximity to the Northern and Western markets of India, this well planned industrial township is fast emerging as a prime choice for business opportunities.*



## The R-tech Group

The R-tech name is synonymous with trust, quality and reliability. We believe in combining the strength of experience with the dynamic needs of the future. R-tech aims to set benchmarks across residential, retail and commercial businesses in different parts of India.

## The Mall

Capital Mall will feature designer boutiques, international brand showrooms, high-end merchandise shops, reputed anchor stores and an all encompassing hypermarket. The mall will offer a wide variety of multi cuisine restaurants, fast food joints and round the clock coffee shops. Finally, Capital Mall will house a 4 screen multiplex – the very first of its kind in the town of Bhiwadi.

*Capital Mall aims to be the largest shopping mall in Bhiwadi. With 6 floors dedicated to retail and entertainment, it will be an architectural and commercial landmark in the NCR.*



ZRICKS.COM

## Landscape & Architecture

The mall is spread over 9996 sq. mt of area and will truly be the first mega retail and recreational space of its kind in Bhiwadi. It will bring together a large area of retail, commercial and hospitality space under one roof.

The mall will be complete with well equipped convenience facilities to create a grand retail experience for all. The contemporary front façade will face the main road – a landmark in the heart of town.

*Unique architectural and landscaping elements will provide an ideal venue for social and cultural events and retail promotions, bringing together the people of Bhiwadi as well those visiting from neighbouring regions.*

### ARCHITECTS

*Design Forum International (DFI) was founded in 1995 and is a team of 90 professionals with strategic alliances abroad as well as within the country.*



A day view of the Capital Mall



## Location

Capital Mall is situated in the heart of the largest productive zone in the NCR - the city of Bhiwadi.

The mall is located strategically, surrounded by up-market residential and industrial regions. Nearby industrial regions boast of some of the biggest names including Gillette India, Bosch & Lomb India, Lakhani Shoes, Havells India, Jaquar, Pepsi India, Luster Tiles and Relaxo Footware. A large Honda motor plant is due to open soon.

*Capital Mall is connected directly to Gurgaon through NH8 and the Sohna Road. This makes it easily accessible to the capital of the country - Delhi.*

## Catchments

The mall's neighbourhood forms the busiest retail and commercial hub of Bhiwadi, next to extensively inhabited residential pockets. This region aims to be a centre of retail, entertainment and commercial activity of international standards.

The population of Bhiwadi has risen to 6 lakhs and 50,000 apartments are expected to be complete in the next two years. The primary catchments will be from surrounding residential and commercial pockets. The secondary catchments will be people visiting from the NCR and neighbouring states.

## Connectivity

*55 km from the International Airport, New Delhi*

*40 km from Gurgaon*

*60 km from Faridabad*

*20 km from IMT Manesar*

*90 km from Alwar*



### EASY ACCESSIBILITY

*The mall is adjoining the National Highway 8 (Delhi - Jaipur highway) on the Dharuhera Sohna Road.*

## Features

### AREA

9996 sq.mt. of land

6 storeys

Grand frontage of 325 ft.

### LEVELS

Hypermarket on lower ground floor

3 floors of retail

Multi cuisine food court

Speciality cafés

4 screen multiplex

Ample Surface car parking



Hypermarket

ZRICKS.COM

### FORMATS

All shops & showrooms face the atrium

High frontage for showrooms

Large space for hypermarket

Escalators



Food Courts



## Amenities

### CONVENIENCE

*Wide corridors*

*High speed escalators*

*Capsule elevators*

### SECURITY

*100% power back up*

*24 hr security*

*CCTV controlled security systems*

*Fire fighting alarm system*

*Earthquake resistant R.C.C. framed structure*



ZRIK  
Retail



Kids Zone



Multiplex



SO MUCH MORE...

*Unique architecture and landscaping*

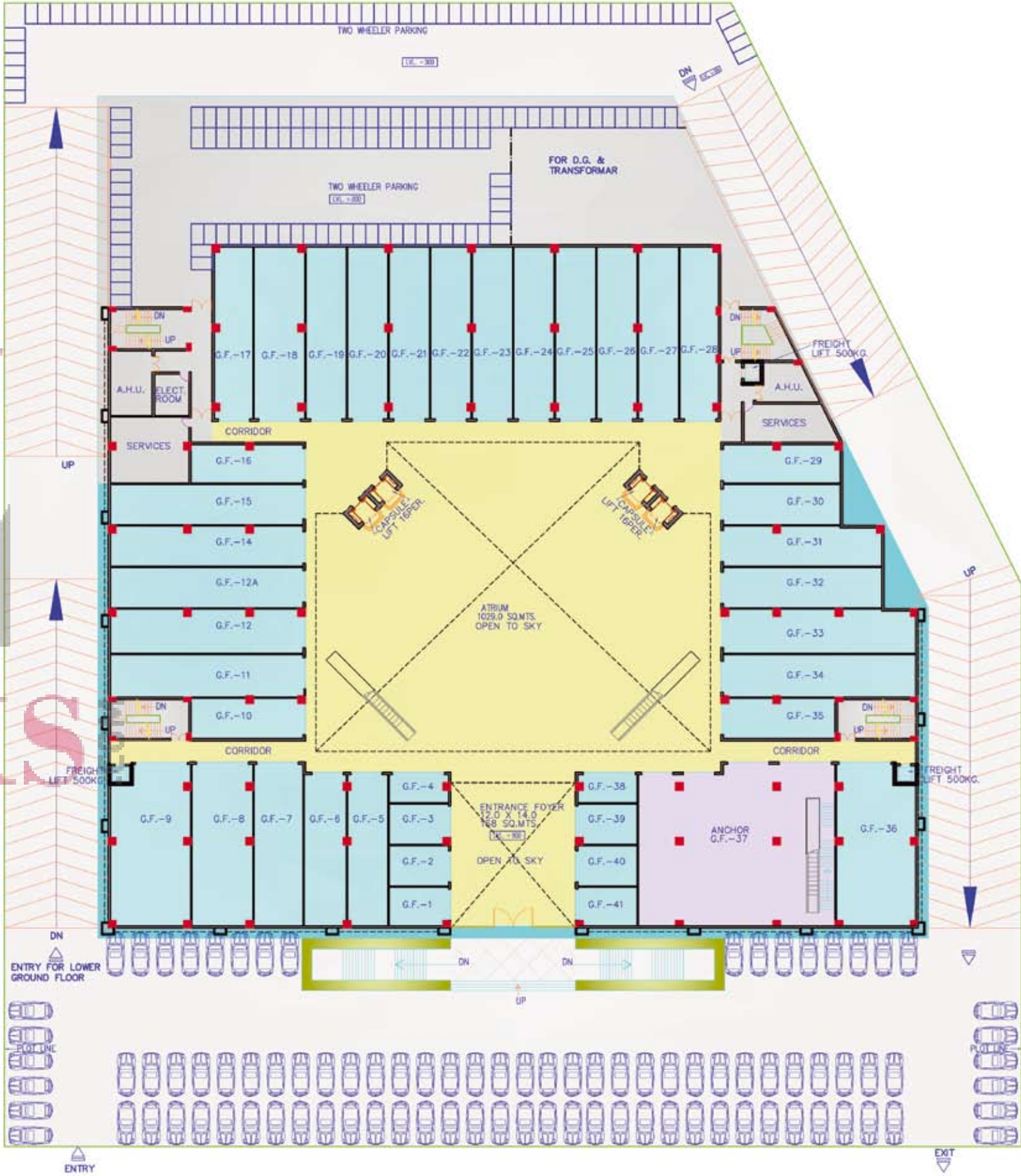
*Digital music in main atrium*

*Permanent finish with glass cladding*

Lower Ground Floor - HYPERMARKET

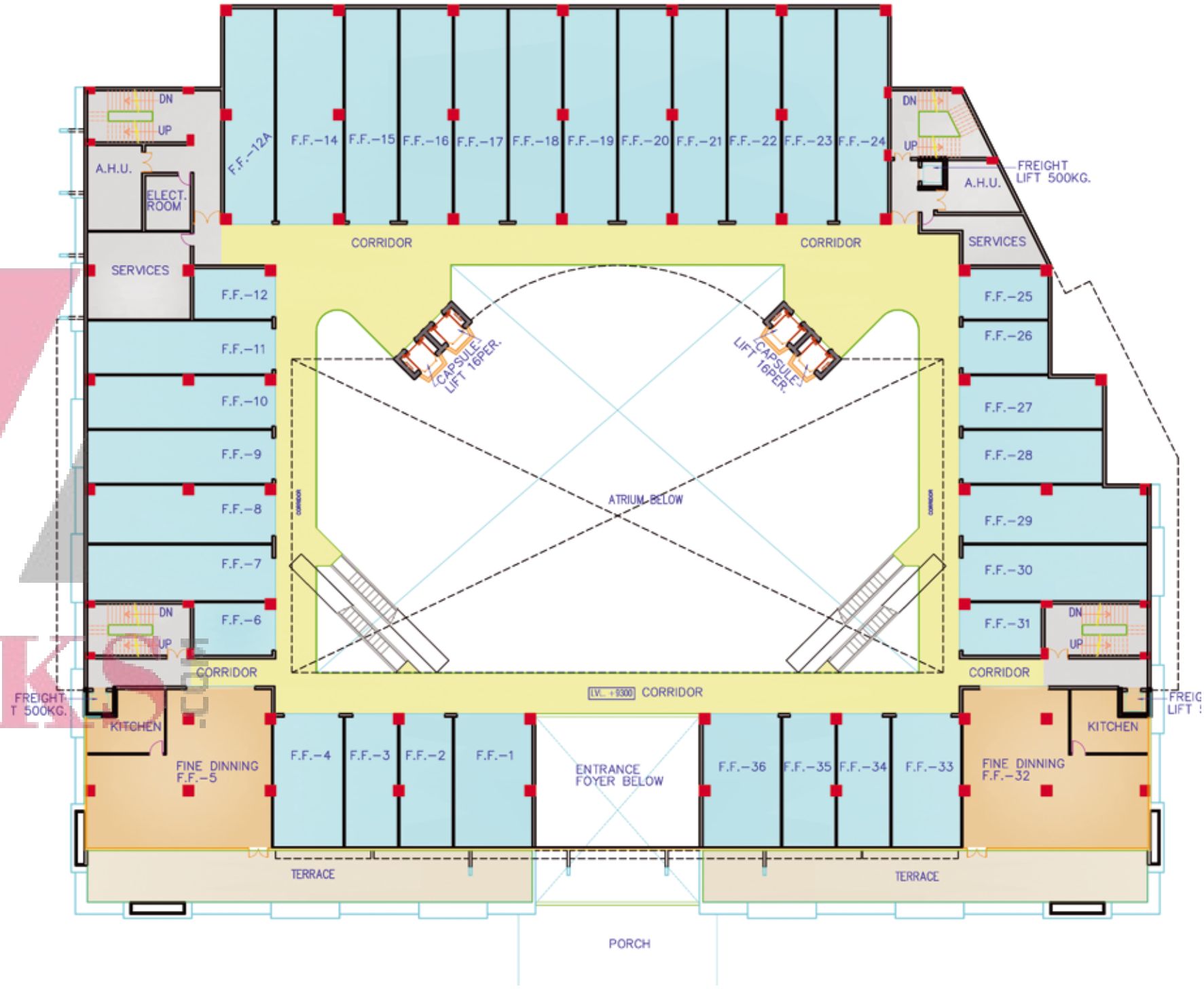
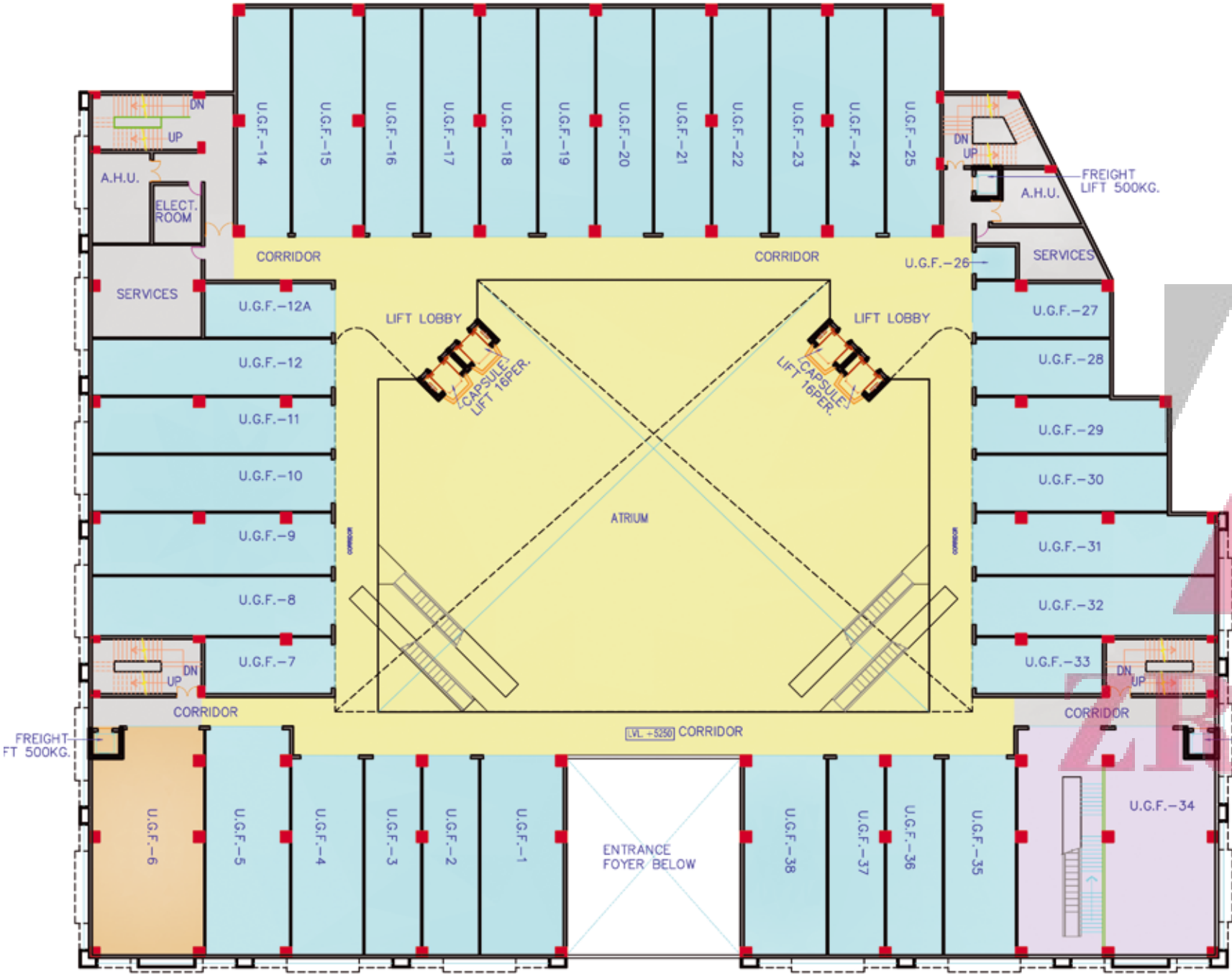


Ground Floor - RETAIL & ANCHORS

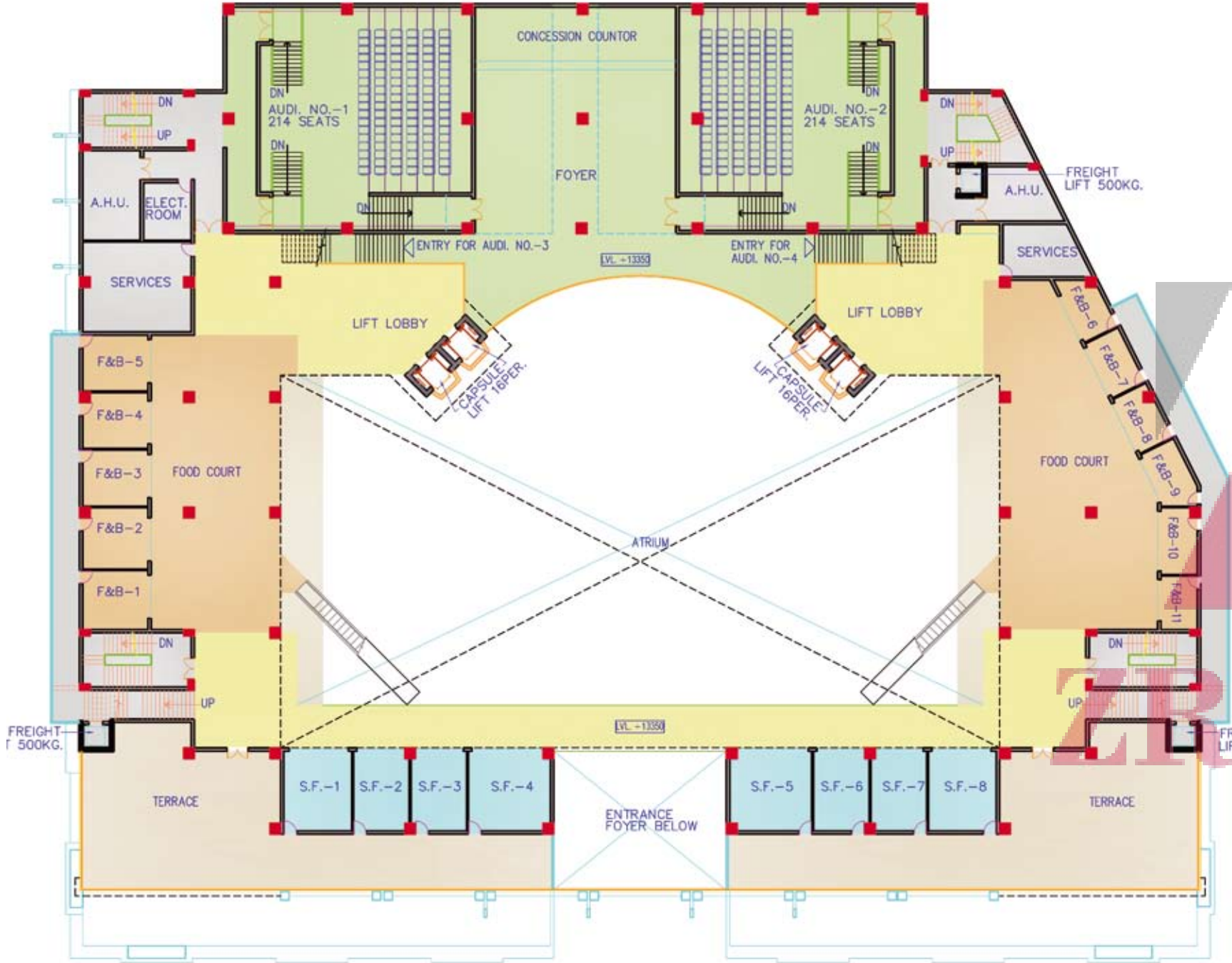


Upper Ground Floor - RETAIL

First Floor - RETAIL & FINE DINING



Second Floor - FOOD COURT & MULTIPLEX



Third Floor - MULTIPLEX



## The business opportunity

Capital Mall houses a variety of formats to fit the needs and interests of your business, whether in the field of retail, commerce, recreation, leisure or hospitality.

R-Tech Developers aim to maintain international standards of quality combined with world class services and amenities to please the most discerning clientele.

The combination of retail, entertainment and hospitality will create larger footfalls, where families can spend an entire day at the mall, to fulfill all their needs and interests.

*Capital Mall will be an architectural and commercial landmark in Bhiwadi, and will offer a sound business opportunity with a rewarding investment potential.*

### CONTACT US

*For further information on the Capital Mall, Bhiwadi or on R-Tech Developers, please email us at [rtechdevelopers@gmail.com](mailto:rtechdevelopers@gmail.com) or call us on the following numbers.*

*TEL : 0124 404 5300 / 5400 / 5700*

***MOB : 9971922112 / 113 / 114***

#### DISCLAIMER

The layout plans, specifications and facilities mentioned and shown in the brochure are subject to statutory and other approvals and thus can change. The visuals used are for reference and not pictures of actual facilities. The leaflet is purely conceptual and not a legal offering. Brand names appearing in the brochure are for artwork purpose only. Further in the interest of maintaining high standards, the company/architects reserves the right to modify any detail/specification/features mentioned herein. Please refer to application form for term and conditions.

Capital Mall at Night

