



RENOWNED  
GROUP

*Life's best  
is Here !*



Lotus  
VILLAS

Villas / Floors Adjacent Sec.-1,  
Greater Noida West



LIFESTYLE VILLAS



## RENOWNED GROUP

Home means living in the heart of Greater Noida west and enjoying all the conveniences it offers. Live next to the Noida, where your home overlooks the enchanting, shimmering canvas in blue and your lifestyle is at par with your success. Come home to the most sought-after address in the city – Renowned Groups LOTUS VILLAS, a home that is as evolved and classy as you are.

Welcome to a new level of luxury living. Where abundance of natural light is your another source of electricity, where surrounding nature offers total privacy and where whispers of wind becomes your neighbour.

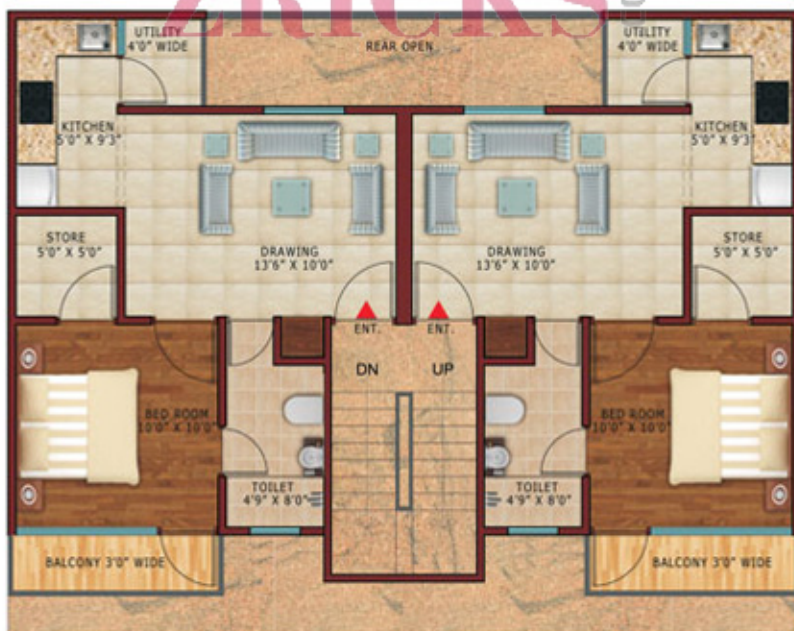
Welcome to LOTUS VILLAS – where living life is full of bliss and royalty. Get accustomed to an exclusive approach daily that would give you a feel of opulence and pride. Great yourself in sheer elegance with thoughtful landscaping and cheerful surroundings. And as you enter your home, experience the unlimited advantage of security, Privacy, class and nature's studding backdrops that keep changing daily.

Comprising of aesthetically conceptualized and spacious living spaces, cross-ventilated private Floors, gymnasium facilities, magnificent entrance lobby that is well-lit with a high ceiling and marble floors, intelligent security systems, a fire protection system and world-class fixtures.

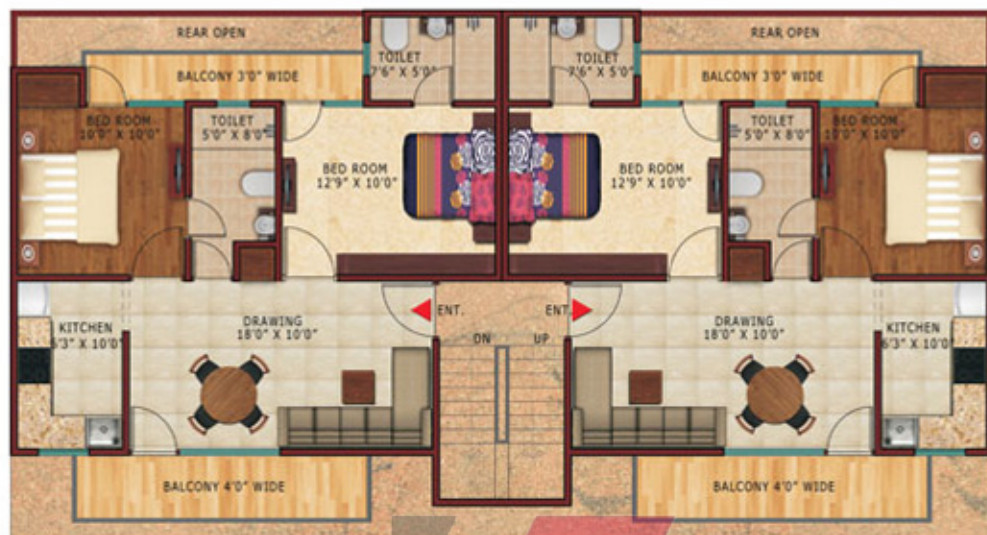
So come. Experience that art of fine living at LOTUS VILLAS.



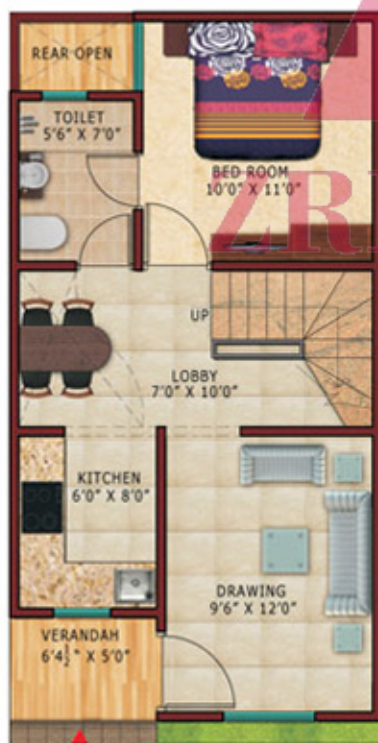




1015 Sq. ft



1365 Sq. ft



GROUND FLOOR PLAN



FIRST FLOOR PLAN

Life's a bet is Here!



## Technical Specifications

### GENERAL

Earthquake resistant structure designed by highly experienced structural engineers.

### STRUCTURE

R.C.C. frame structure with columns, beams and slabs with brick wall partition.

### DOORS & WINDOWS

All external windows are powder coated aluminium with glazed panels and modern fittings. All Internal and main entrance door frame in hard wood, with shutters duly polished.

### FLOORING

Drawing / Dining and bedrooms have vitrified tiles, Ceramic Tiles flooring in Toilets, Kitchen, Balconies. Marble/Kota Stone Flooring in corridors, Lift Lobbies and Staircases.

### INTERNAL FINISH

All internal walls are plastered and painted with pleasing shades of oil bond distemper, ceilings with light shades. P.O.P. Cornice in Drawing / Dining and Bedrooms.

### EXTERNAL FINISH

Modern and elegant outer finish with high quality paint

### TOILETS

Provision for hot & cold water system. Glazed tiles in pleasing colours on walls up to door level. European W.C's, washbasins & cisterns in light shade of reputed brands. Chrome plated fittings of standard make.

### KITCHEN

Granite working platform with 2ft high glazed ceramic tiles top-up, stainless steel sink with provision of Hot and Cold water supply.

### ELECTRICITY

All copper wiring in P.V.C. concepted conduit. Adequate modular switch / sockets for light and power points as well as telephone & TV outlets with protective M.C.Bs.

### Water SUPPLY

Overhead water tanks with pumps for uninterrupted supply of water.

### FIRE SAFETY

As per government norms.



ONGOING

**Lotus**  
PARKK  
SRAJAPUR, GREATER NOIDA  
LIFESTYLE FLOORS

State Bank of India  
2018-2019  
Nirman City  
Nirman City



**NirmanCity**  
GREATER NOIDA (WEST)  
FREE HOLD PLOTS  
ONGOING

**NirmanCity**  
LAL KUAN  
FREE HOLD PLOTS  
FULLY SOLD OUT

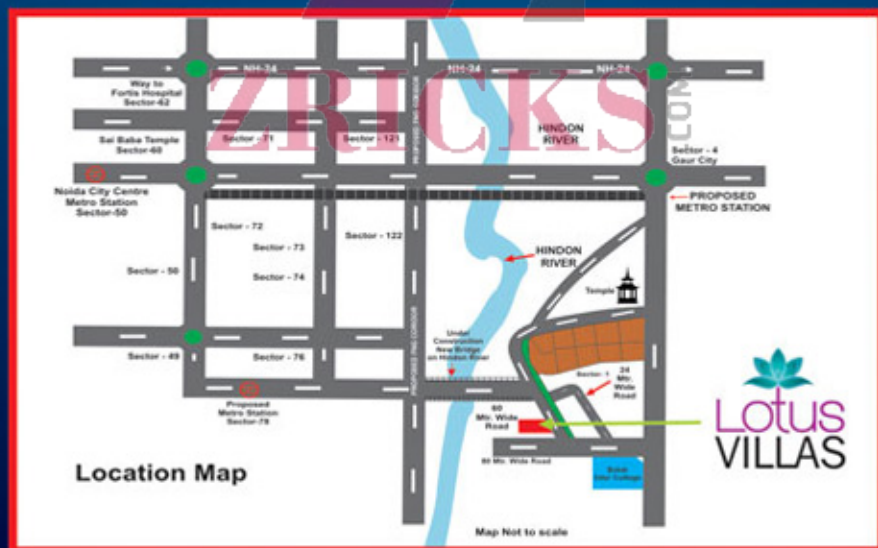
**NirmanCity**  
SECTOR 74, NOIDA, U.P.  
FREE HOLD PLOTS  
FULLY SOLD OUT

**NirmanCity**  
GOMTI NAGAR  
FREE HOLD PLOTS  
Phase-1 Delivered



# Bawal Residency

National Highway - 8, Haryana



**RENOVED BUILDTECH PVT. LTD.**  
Corporate Office : H-95, 2nd Floor, Sector-63, Noida, U.P.  
• Site Office : Adjacent Sec. -1, Greater Noida west U.P.



**4PS GROUP**

A-59, 2nd Floor, Sector-58, Noida - 201301 (UP)  
WWW.4PSGROUP.COM, web mail, info@4psgroup.com  
Contact No. +91- 9250205715, 17

**Disclaimer :** Visual representation/s shown in this brochure are purely conceptual. All building Plans, specifications, floor plans and elevations etc. are tentative and subject to variation and modification of the competent authorised sanctioning plans.