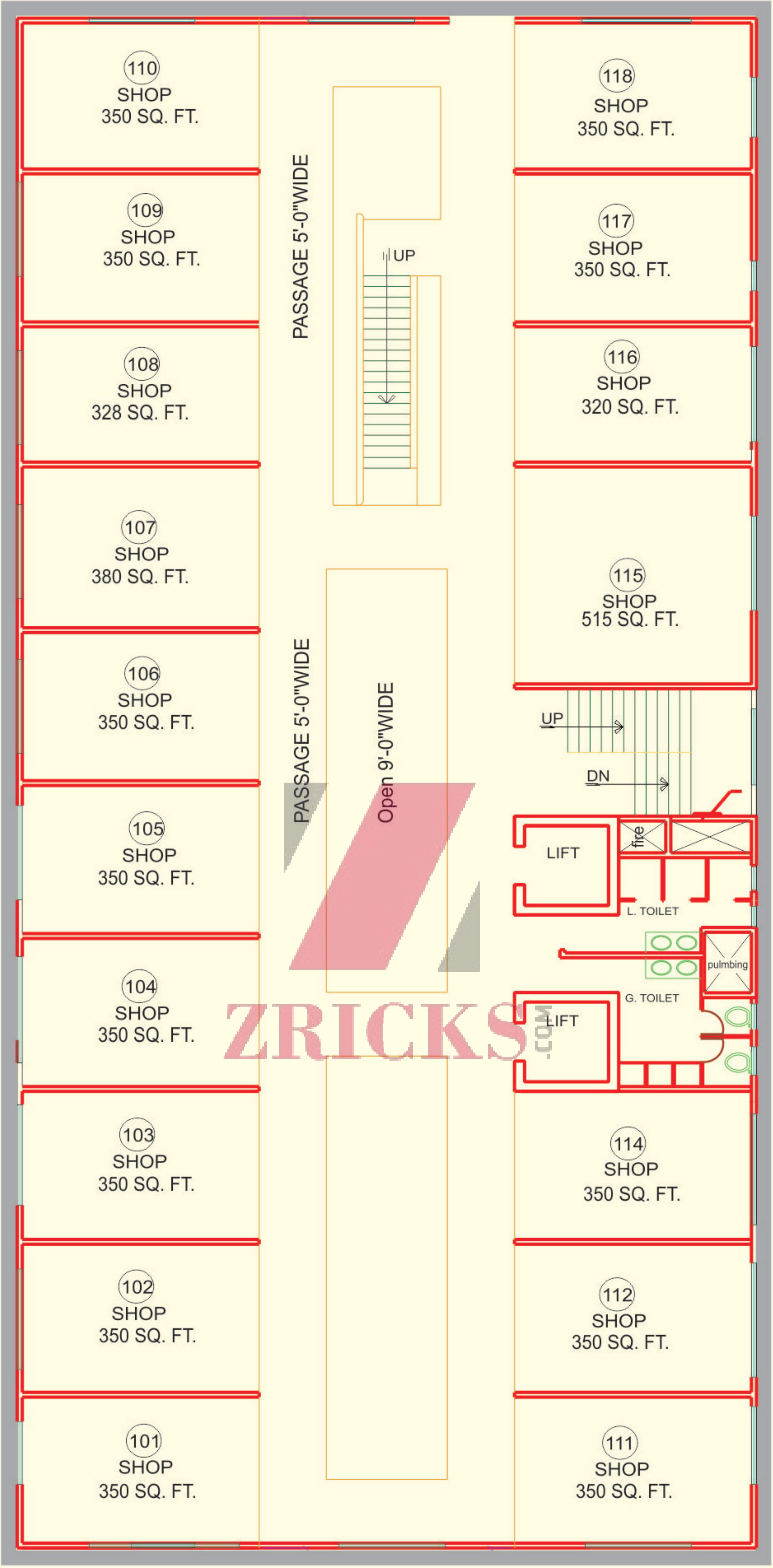


# GROUND FLOOR PLAN

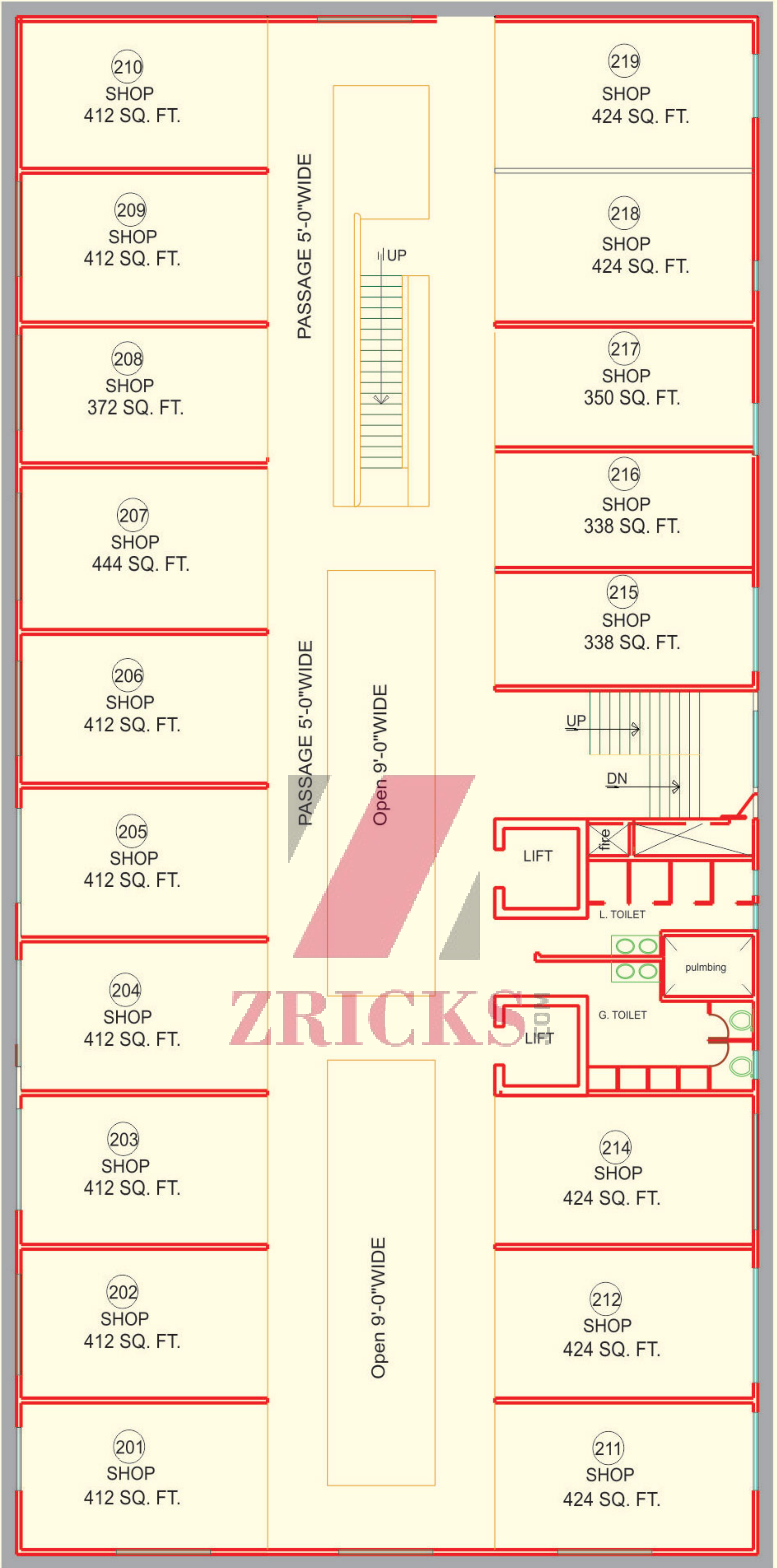
Retail Shops





**FIRST FLOOR**  
**PLAN**  
**Retail Shops**





**SECOND FLOOR**  
**Plan**  
**Retail Shops**

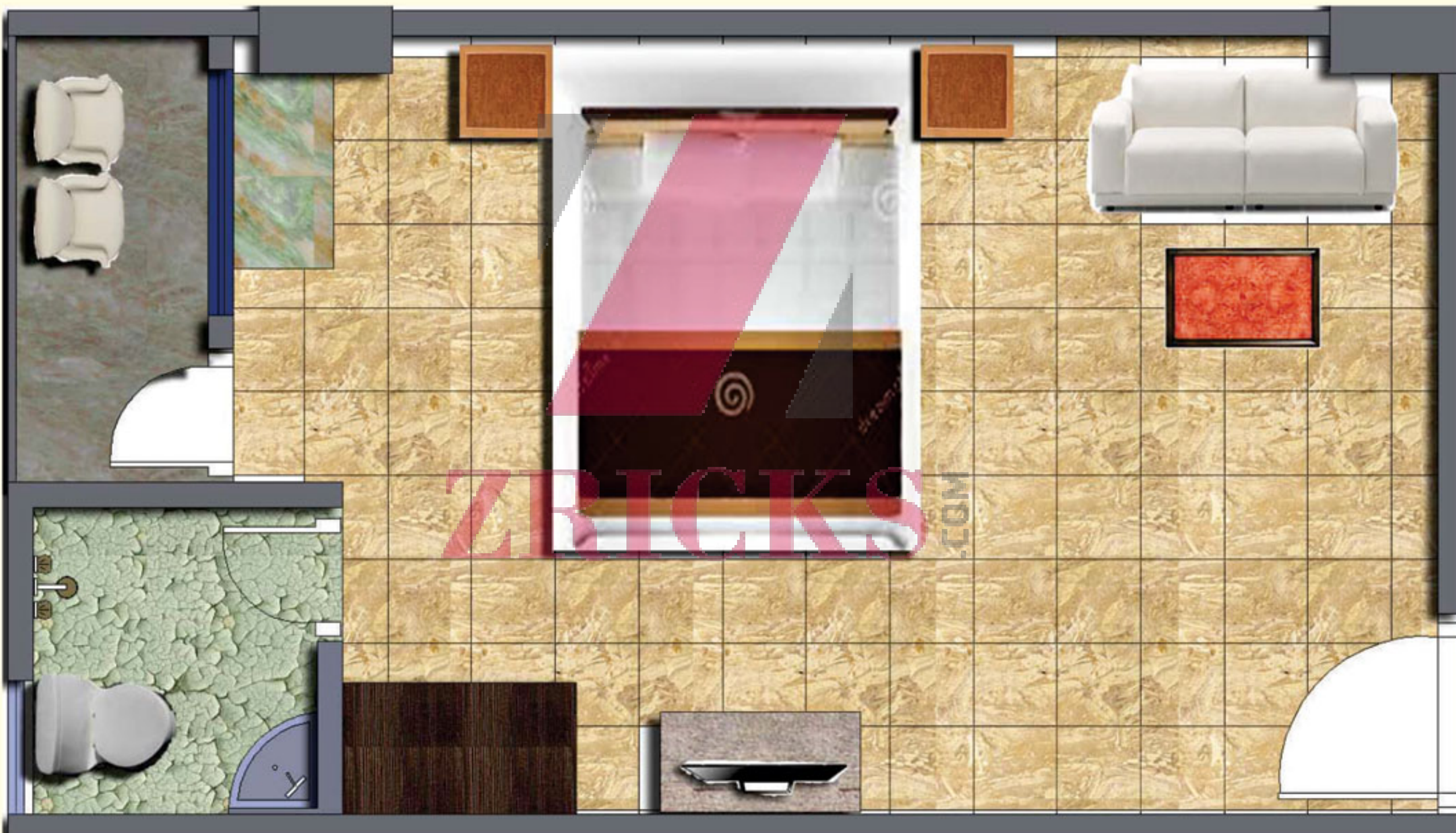






# SERVICE APARTMENT

## 4th FLOOR ONWARDS





# Sky View Tower, UIT, Bhiwadi

## PAYMENT PLANS

### Installments

#### PAYMENT PLAN "A"

1. At the time of Booking
2. Within 45 days of Booking
3. On offer of possession

#### Down Payment Plan

- 10%  
85% Plus EDC / IDC  
5%

#### PAYMENT PLAN "B"

1. At the time of Booking
2. Within 45 days of booking
3. At the time of Super Structure
4. On offer of Possession

#### Payment Link Plan

- 10%  
20%  
20% + 50% of EDC/IDC  
50% + 50% of EDC/IDC

#### PAYMENT PLAN "C"

1. At the time of Booking
2. Within 45 days
3. On the completion of super structure
4. On Possession

- 10%  
50% (less booking amount)  
25%+ 50% EDC / IDC  
25% + Other Charges

#### PAYMENT PLAN "D"

1. At the time of booking
2. Within 30 days of booking
3. On Completion of Foundation
4. On casting of basement slab
5. On casting of second floor slab
6. On casting of third floor slab
7. On casting of fourth floor slab
8. On casting of fifth floor slab
9. On casting of seventh floor slab
10. On brick work
11. On flooring /tiling
12. On offer of possession

#### Construction Linked Plan

- 10%  
10%  
10%  
10%  
8%  
8%  
8%  
8% + 50% EDC/IDC  
8%  
8% + 50% EDC/IDC  
7%  
5% + Outstanding dues if any

# Sky View Tower, UIT, Bhiwadi

## PRICE LIST

### BASIC RATE

Ground Floor	Shops	Rs.10000/- Sq.ft
First Floor	Shops	Rs.7500/- Sq.ft
Second Floor	Shops	Rs.6500/- Sq.ft
Third Floor	Food Court/Offices	Rs.6000/- Sq.ft
Fourth Floor Onwards	Service Apartments	Rs.5550/- Fully Furnished
Fourth Floor Onwards	Service Apartments	Rs.5300/- Semi Furnished
Preference Location Charges	Ground Floor Corners	Rs.500/- Sq.ft
	Middle Corner/Opp Lift	Rs.500/- Sq.ft
	First Floor Corners	Rs.300/- Sq.ft
	Middle Corner Opp Lift	Rs.300/- Sq.ft
	Service Apartments front Corner	Rs.100/- Sq.ft
Fire Fighting	At the time of Possession	Actual
EDC-IDC		Rs.100/- Sq.ft
IFMS		Rs.60/- Sq.ft
Electrification Charges		Rs.25000/- per Unit
Power Back Up		Rs.20000/- per KVA Minimum 2 KVA

Govt Taxes + Service Tax as Applicable



## Proposed Specifications

Fully furnished ready to move-in units with concierge service.

---

Flooring Vitrified Tiles as per the designs.

---

Contemporary furniture including wardrobe, beds, sofas, coffee tables, dining tables with chair, study table with chair and TV console.

---

Wood/Aluminium/UPC door windows as per design.

---

3 Fixture toilet with modern tile on floor and wall. Premium bath fittings.

---

LED television (32Inch) in the fully furnished apartment.

---

Granite table top, micro-oven & Tea / Coffee Cattle

---

Walls and ceiling with POP plaster finished with plastic paint.

---

Fully power backup

---

Fire detection and suppression system.

---

Security equipment and camera in common areas.



### Connectivity from :- NH 8

