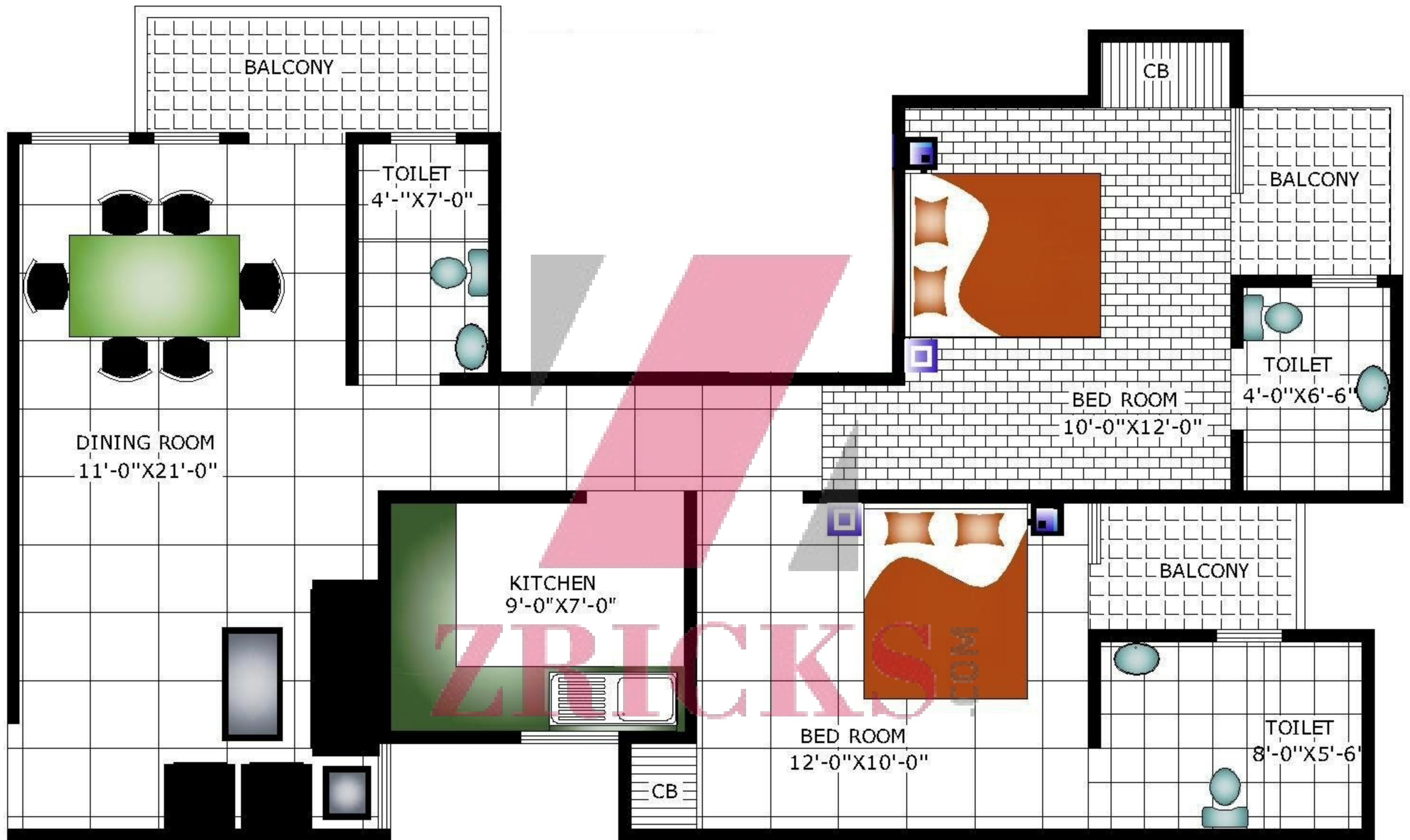
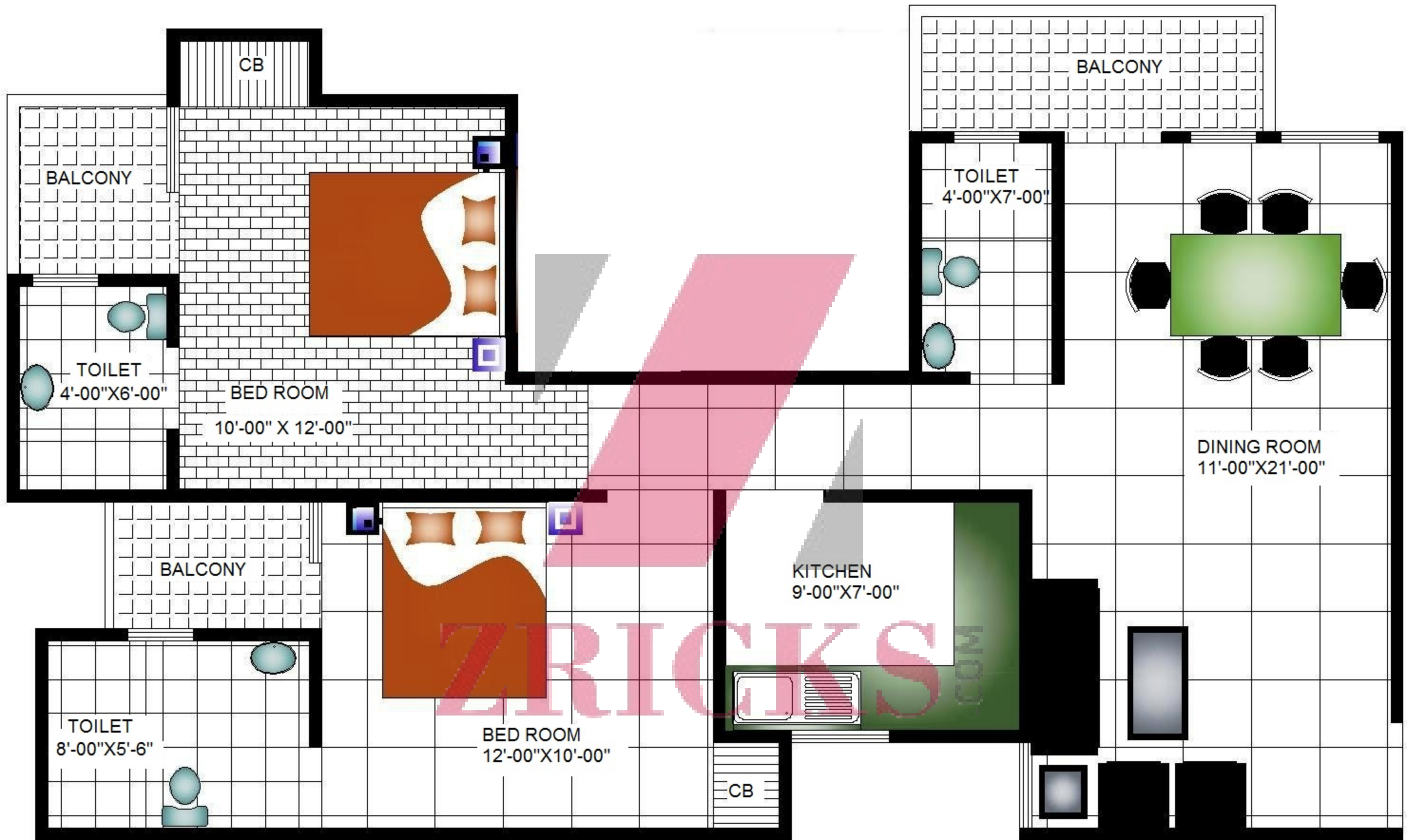


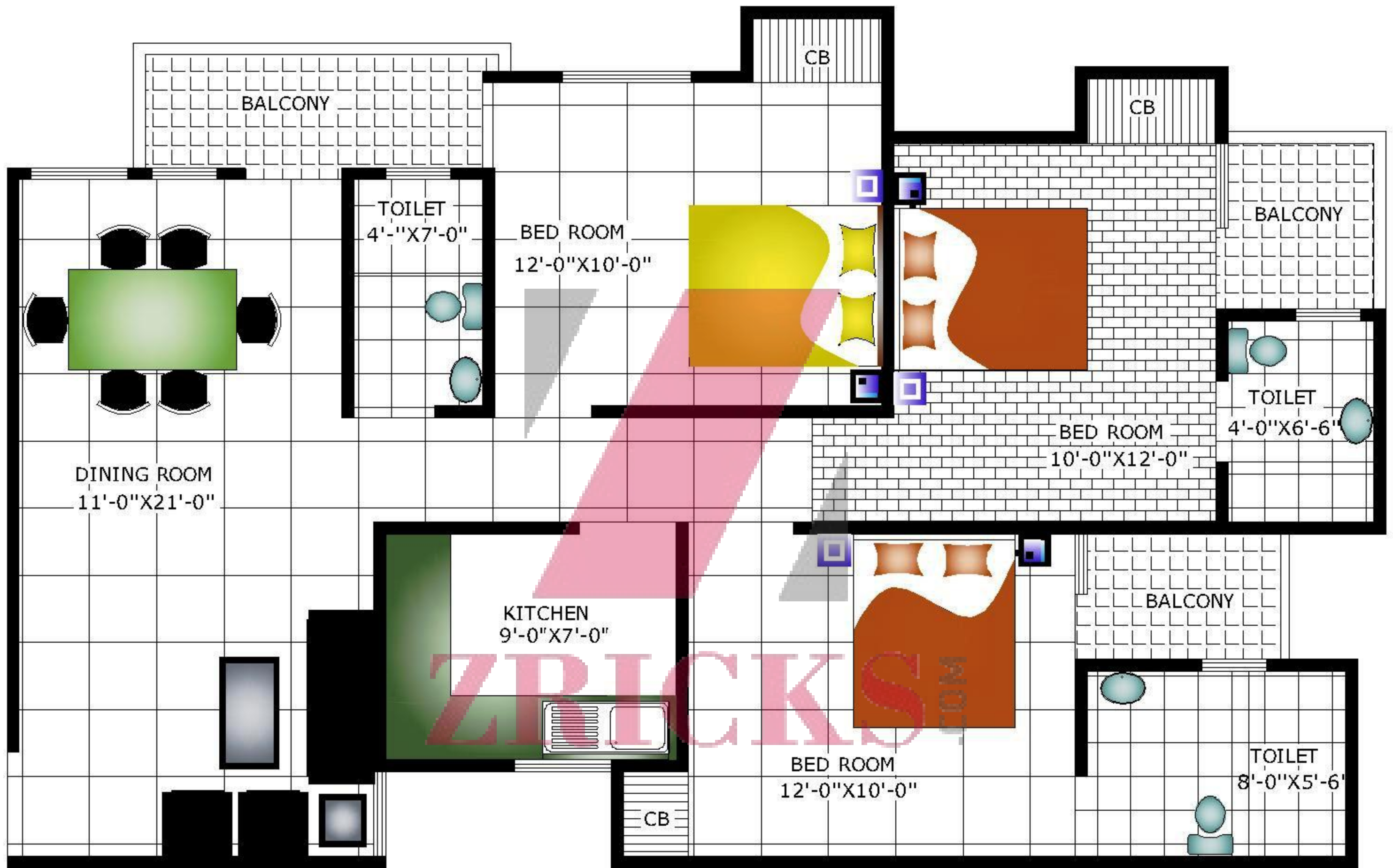
TWO BED ROOM FLAT (TYPE-B)
 SUPER AREA = 850.00 SQFT



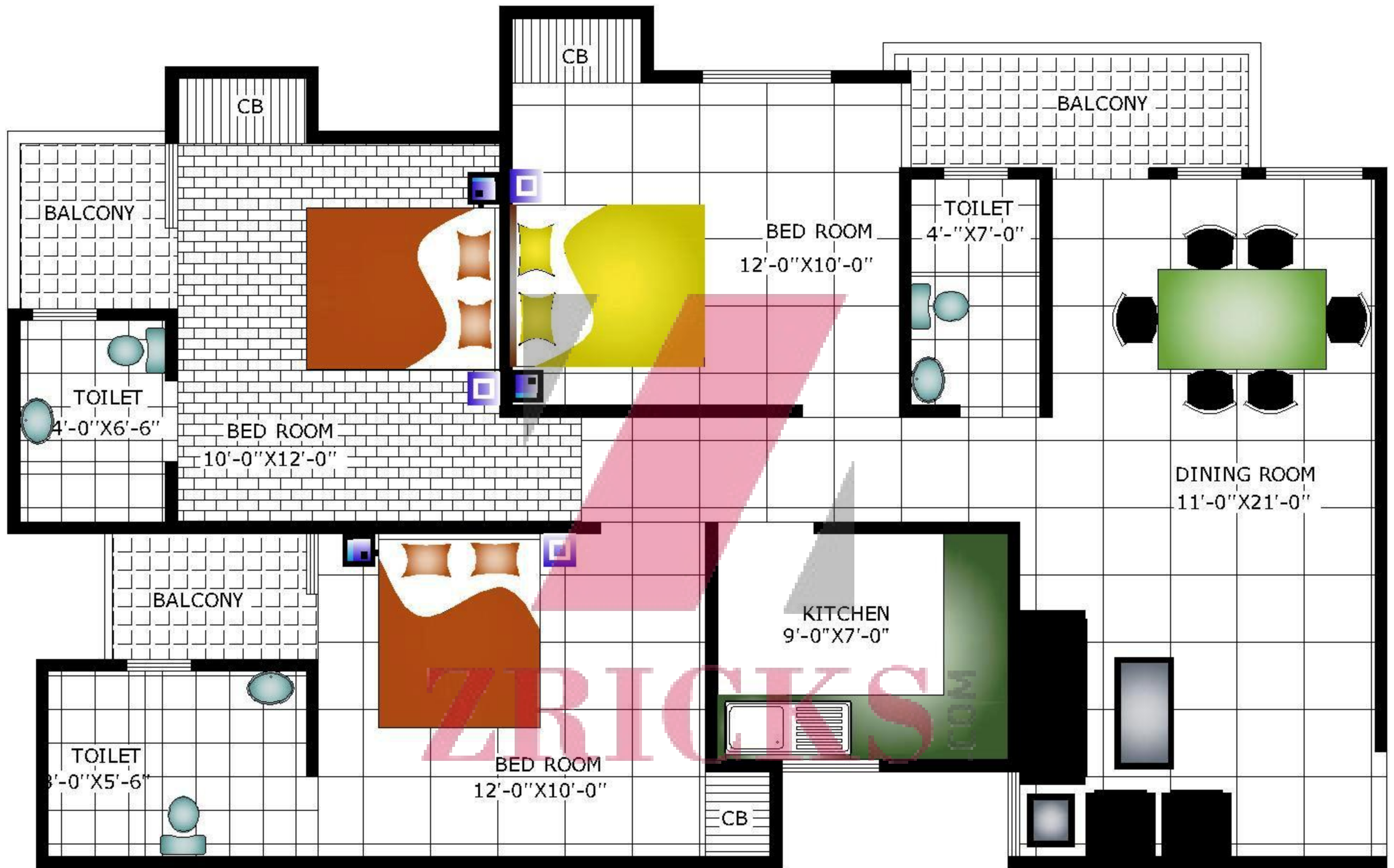
TWO BED ROOM FLAT (TYPE -A)
 SUPER AREA = 1250.00 SQFT



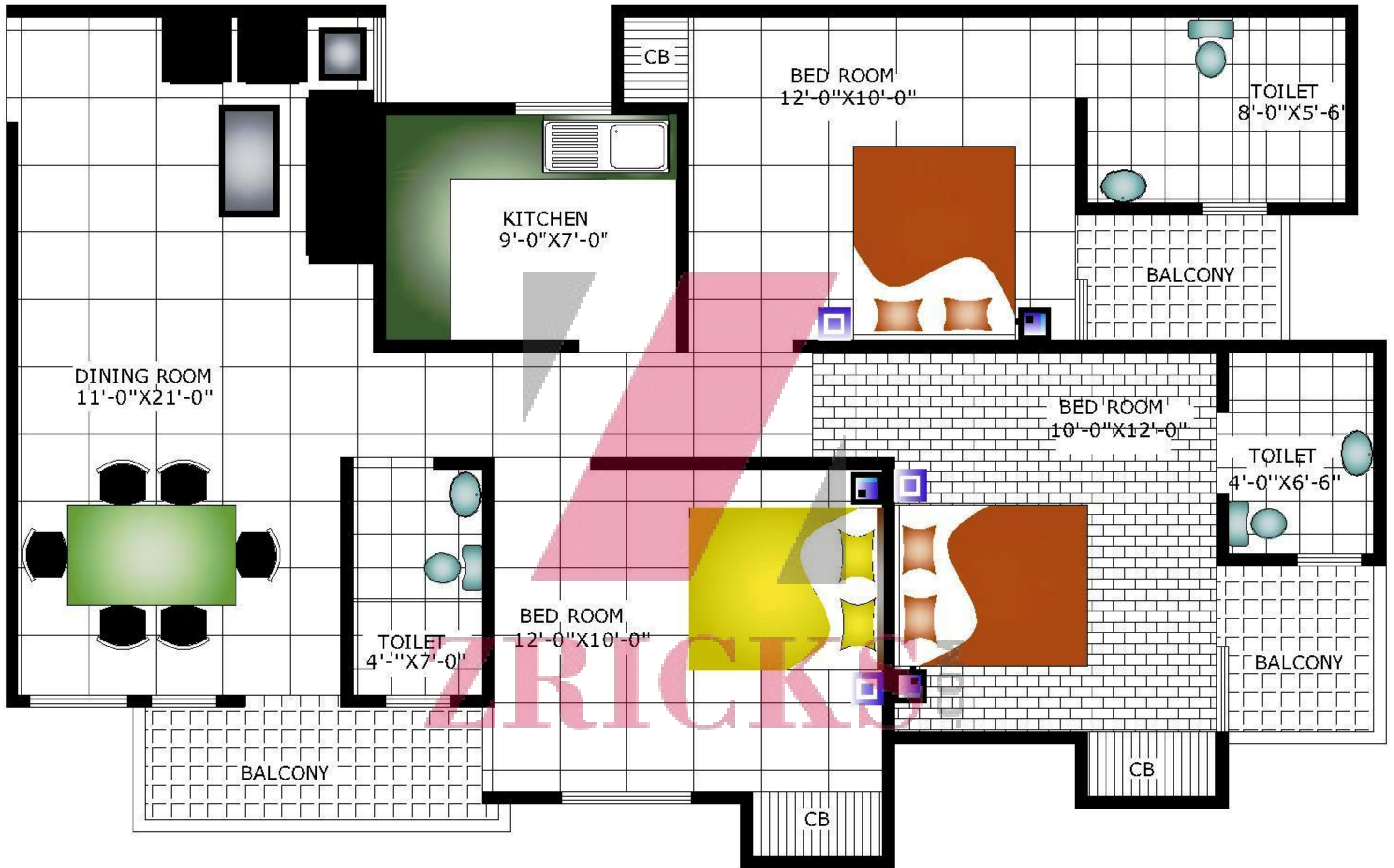
TWO BED ROOM FLAT (TYPE - E)
 SUPER AREA = 1250.00 SQFT



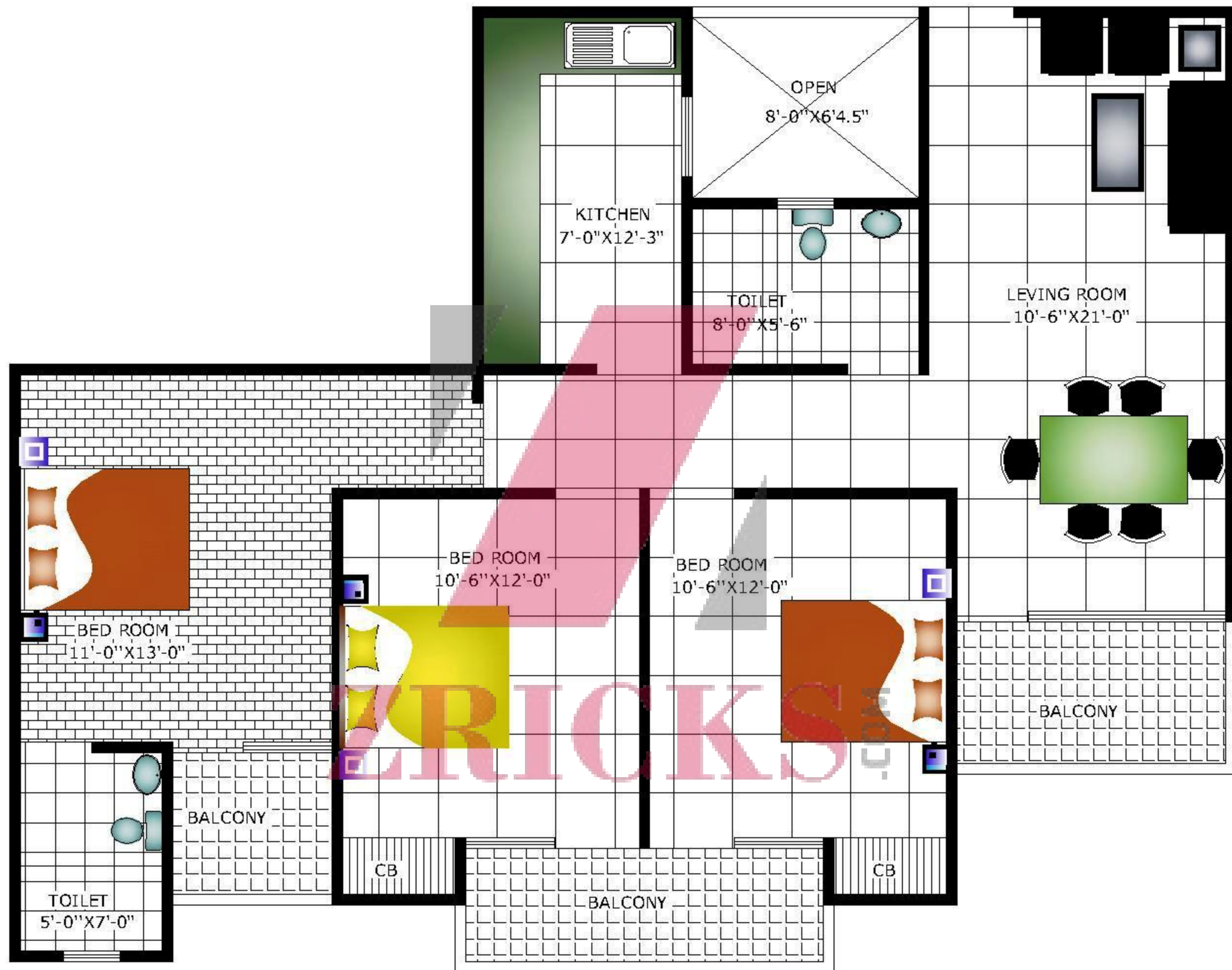
THREE BED ROOM FLAT (TYPE -A)
 SUPER AREA = 1400.00 SQFT



THREE BED ROOM FLAT(TYPE-E)
 SUPER AREA = 1400.00 SQFT



THREE BED ROOM FLAT (TYPE-B)
 SUPER AREA = 1400.00 SQFT



THREE BED ROOM FLAT(TYPE -C)
 SUPER AREA = 1480.00 SQFT



THREE BED ROOM FLAT(TYPE-D)
 SUPER AREA = 1480.00 SQFT

BLOCK - N1



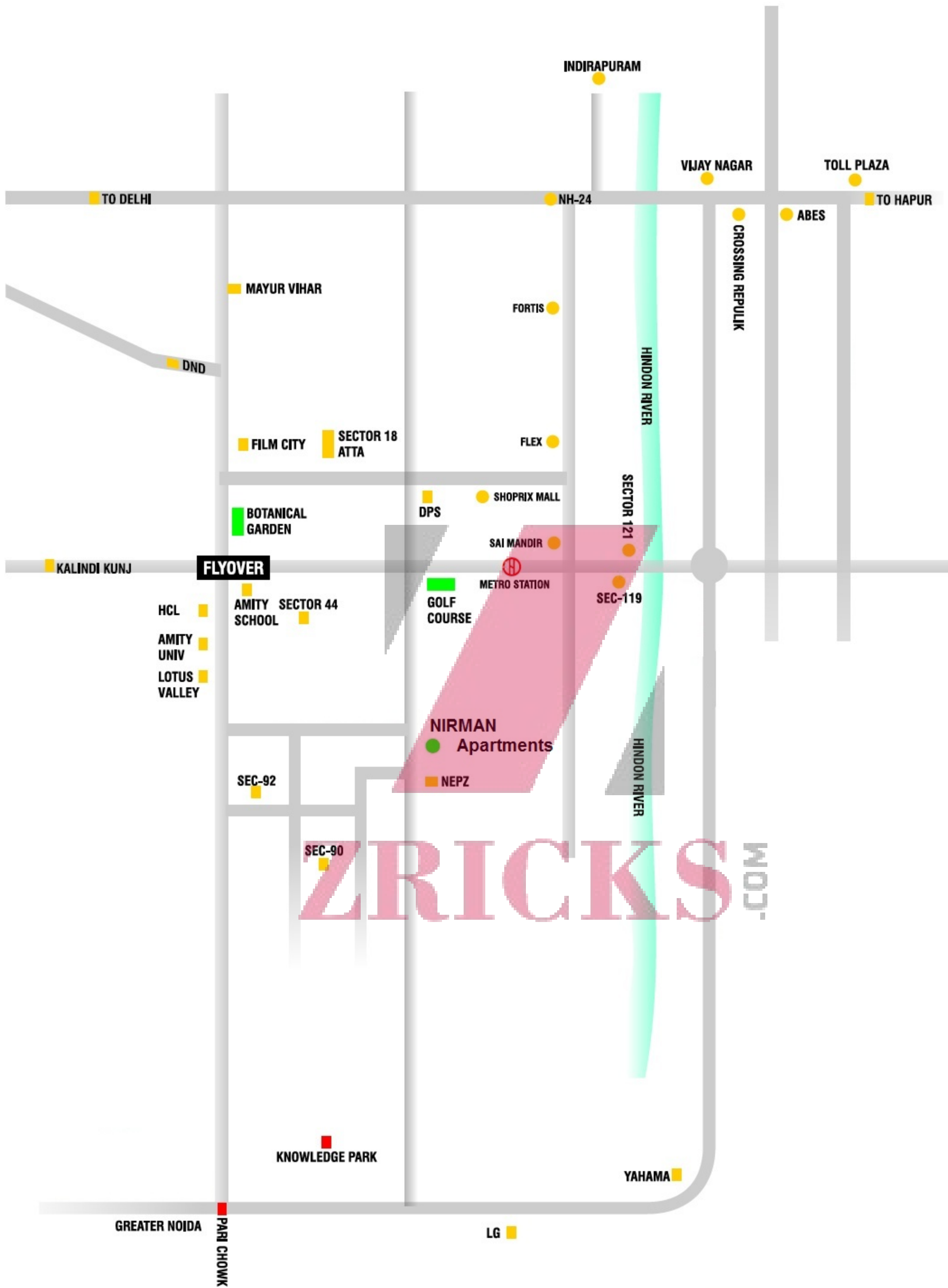
**3 Bedroom Flats
NIRMAN APARTMENTS**

**By: Nirman Construction
Sector - 106, Noida - 201301**

**Office: Near Police Chowki,
Silarpur, Main Dadri Road, Noida (U.P.)**



TWO BED ROOM FLAT
TYPICAL FLOOR PLAN



ZRICKS.COM

Nirman Apartment Specification

Nirman Apartment

⇒ Superstructure

Earthquake Resistant R.C.C. Frame Structure
Structure designed approval by IIT Engineers

⇒ Flooring

: Vitrified tiles in Drawing/Dining/Bedroom

⇒ Doors & Windows

All internal doors shall be commercial flush doors, All
External doors and windows shall be of wooden with
enamel paint

⇒ Kitchen

Green Marble working counter with single bowl
stainless steel sink. Ceramic glazed tiles dado up to 2'
above working counter

⇒ Toilet

Ceramic glazed tiles up to 7' on walls. Wall hanging
English W.C. Provision of Hot and cold water system.
Good quality CP fittings

⇒ Wall Finish

Inside Wall with Oil Bound Distemper Exterior Walls
shall be snowcom

⇒ Electrical

Cooper wiring in concealed PVC conduits. Sufficient
Power points & Provision of TV & Telephone Points in
living and all bed rooms.