



Stellar उपवन

हमारा सपना सबका घर



1 & 2 BHK
500 sq. ft | 670 sq. ft.

Affordable housing.

Gated community with 24 hrs. Security

Low rise G+3 floors only.

Green Parks and children play area.

Ample common space for parking.

Water Storage facility for each flat.

Shops available within the society.

Separate Inverter in each flat for back up power

Building is compliant of seismic zone IV code IS:4326

Easy Hassle free connectivity.

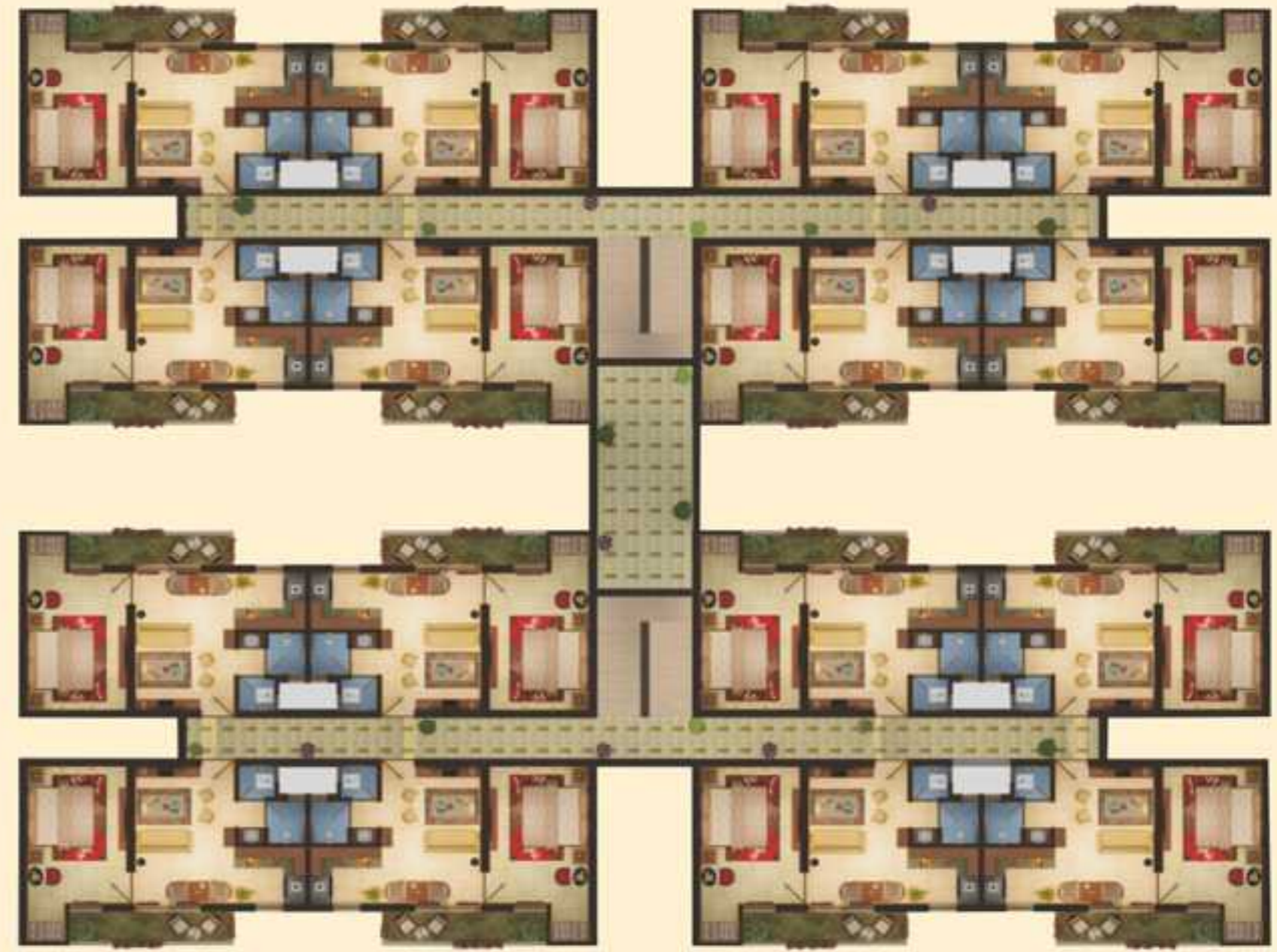
Back up power for common areas.

Owing your Dream Home has never been as affordable as presented this time by Stellar Group. Great visionary Mr. R.M.Sethi (Ex. Senior IAS Officer) a well known name in Real Estate, has come up with his long awaited dream project. "STELLAR UPVAN" which is located at NH-24. It is well connected to Delhi-NCR region & close to Eastern Peripheral Expressway. The site is well planned in the lap of nature. Stellar is committed to excellent construction quality with modern architectural design and has a track record of time bound project delivery.

Contact : 8130135350, 8130127772/1, 8130187772/3, 9650002365

www.stellarprojects.in





1 BHK (2 Room Set)

- 1 Bedroom
- Living Room
- Kitchen
- WC
- Bathroom
- Balcony

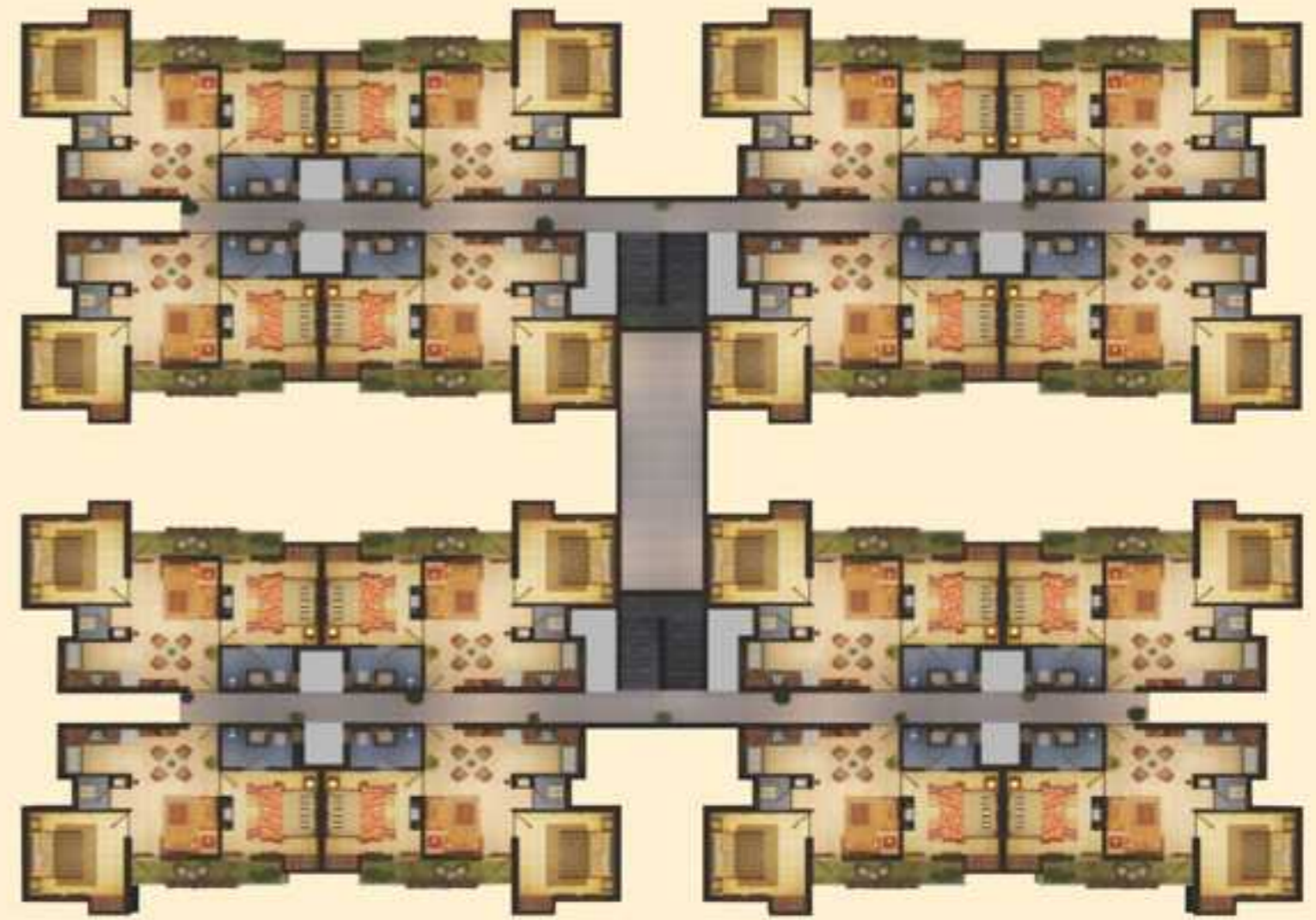
Super Area: 500 sq.ft. (46.45 sq.m)

Covered Area: 433 sq.ft. (40.64 sq.m)

Specifications

Location	Flooring	Walls	Doors	Windows	Electrical Fittings	Fixtures and Fittings
Living room	Ceramic Tiles	OBD Paint	Flush/Panel Moulded Doors MS Steel Frame	MS Steel Windows with Glass and Grill	Standard	-
Bedroom	Do	Do	Do	Do	Do	-
Kitchen	Do	Ceramic Tiles, OBD Paint	Do	Do	Do	Stone Working Platform and Stainless Steel Sink
Toilet	Do	Do	Do	Do	Do	Standard Chinaware and C.P. Fitting
Balconies	Do	OBD Paint / Texture Paint	Do	-	Do	-
Entrance Lobby/Corridors	Do	Do	-	-	Do	-
Stairs	Stone/Tiles	Do	-	-	Do	-
External finish	Texture Paint					
Power back up	Separate Inverter for each Flat					

Unit Plans



2 BHK (3 Room Set)

- 2Bedrooms
- Living Room
- Kitchen
- 2 Toilets
- WC
- Balcony

Super Area: 670 sq.ft. (62.64 sq.m)

Covered Area: 577 sq.ft. (53.6 sq.m)

1 Sq.M. = 10.764 sq. ft.

Site Plan



not to scale

Artistic view

Past Projects



Stellar IT Park,
Sec 62, Noida



Stellar Sigma
(Sigma - IV, Greater Noida)

Stellar Business Park,
Greater Noida



Stellar Park
(Sec 62, Noida)



Stellar Kings Court
(Sec 50, Noida)

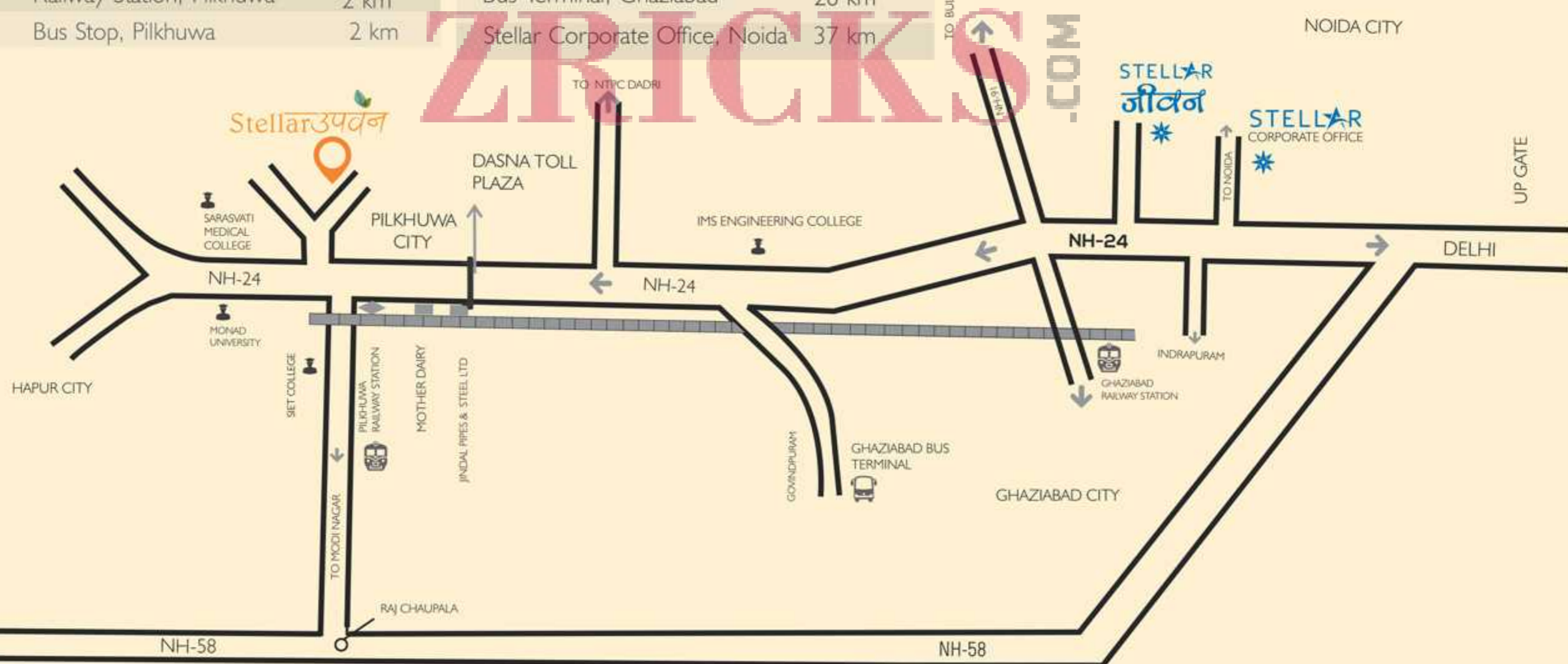


Stellar Green
(Sec 44, Noida)



Location

Saraswati Medical College	0.5 km	Hapur City	10 km
Monad University	1 km	Dasna Toll Plaza, NH-24, GZB	15 km
Pilkhuwa City	1 km	Railway Station, Ghaziabad	26 km
Railway Station, Pilkhuwa	2 km	Bus Terminal, Ghaziabad	28 km
Bus Stop, Pilkhuwa	2 km	Stellar Corporate Office, Noida	37 km



MAP NOT TO SCALE



Marketing Office: Opposite Kisan Dharam Kanta, NH-24, Pilkhuwa, U.P.
Site Office: Stellar Upvan, Near Sarvasati Medical College, NH-24, Pilkhuwa
Corporate Office: C-56/9, Sector-62, Noida, India,