



*The
Key To
Your Home*



ABOUT US

NS GROUP - NeoShape Infratech Pvt. Ltd. founded in 2013, is setting new trends and benchmarks in the contemporary global scenario and has revolutionized the real-estate arena.

Under the dynamic and pragmatic leadership and experienced Sales & Marketing Team, NS Group is scaling new heights and touched the horizon of excellence. Their vision and entrepreneurial acumen is taking the group to the greater heights. Our commitment to deliver quality with aesthetic design surges ahead with the enterprising vision of creating value through excellence.

NS GROUP is a young, vibrant and dynamic realty company with expanding interests in residential & commercial real estate. We have a young, growing and dynamic team of professionals who bring to the table varied strengths and competencies. Our vision is to provide people with celebrated new age infrastructural milestones is supported by the pillars of architectural ingenuity, committed approach and timely delivery. **NS Group** is uniquely committed to serving our clients. We place the financial safety, comfort and success of our investors second to none.

Spreading Joy! This is a feeling behind our every undertaking. Today, we stand before you as builders who cherish this as our paramount philosophy. We consider ourselves lucky, to have got an opportunity to make the dreams of people come true, of giving them not just an infrastructure, but an infrastructure to cherish forever.



Specification

BEDROOMS

Flooring

Vitrified Tiles

Walls

Internal - Oil Bound Distemper (1 Wall Texture Paint) External
- Good Quality Grade Paint

Internal Doors

Enamel painted flush doors

External Doors & Windows

Windows-pre-engineered steel frame with wooden shutters
doors flush doors

MASTER BEDROOMS

Flooring

Laminated Wooden Flooring

Walls

Internal - Oil Bound Distemper (1 Wall Texture Paint) External
- Good Quality Grade Paint

Internal Doors

Enamel painted flush doors

External Doors & Windows

Windows-pre-engineered steel frame with wooden shutters
doors flush doors

LIVING/DINING ROOM

Flooring

Vitrified Tiles

WALLS

Internal - Oil Bound Distemper (1 Wall Texture
Paint) External - Good Quality Grade Paint

Internal Doors

Enamel painted flush doors

External Doors & Windows

Windows-pre-engineered steel frame with wooden shutters
doors flush doors

TOILET

Flooring

Anti Skid Ceramic Tiles

Tiles in cladding upto 7' in shower area and 3'-6" in balance
areas, Balance walls painted in oil bound distemper

Internal Doors

Enamel painted flush doors

Fitting & Fixtures

All provided of standard company make (ISI Mark)

KITCHEN

Kitchen Flooring

Anti-skid Ceramic Tiles

Walls

Ceramic tiles 2'-6" above counter, Balances walls painted in
Oil bound distemper

Internal Doors

Enamel painted flush doors

External Doors & Windows

Windows-pre-engineered steel frame with wooden shutters
doors flush doors

Fitting & Fixtures

Stone Top With Sink (Steel)

Moduler Kitchen With Chimney



Specification

EXTERNAL FINISH

External Finish

Superior paint Finish

Walls

Oil Bound Distemper

Balcony Flooring

Anti-skid Ceramic Tiles

Super Structure

Earthquake -resistant RCC framed structure

Corridor/ Lobby Flooring

Vitrified Tiles

ELECTRICAL

Copper wiring of standard make in concealed P.V.C.

Conduits

Quality Electrical Switches

Provision for AC Installation and All Electrical Equipments in Living room and Bedrooms



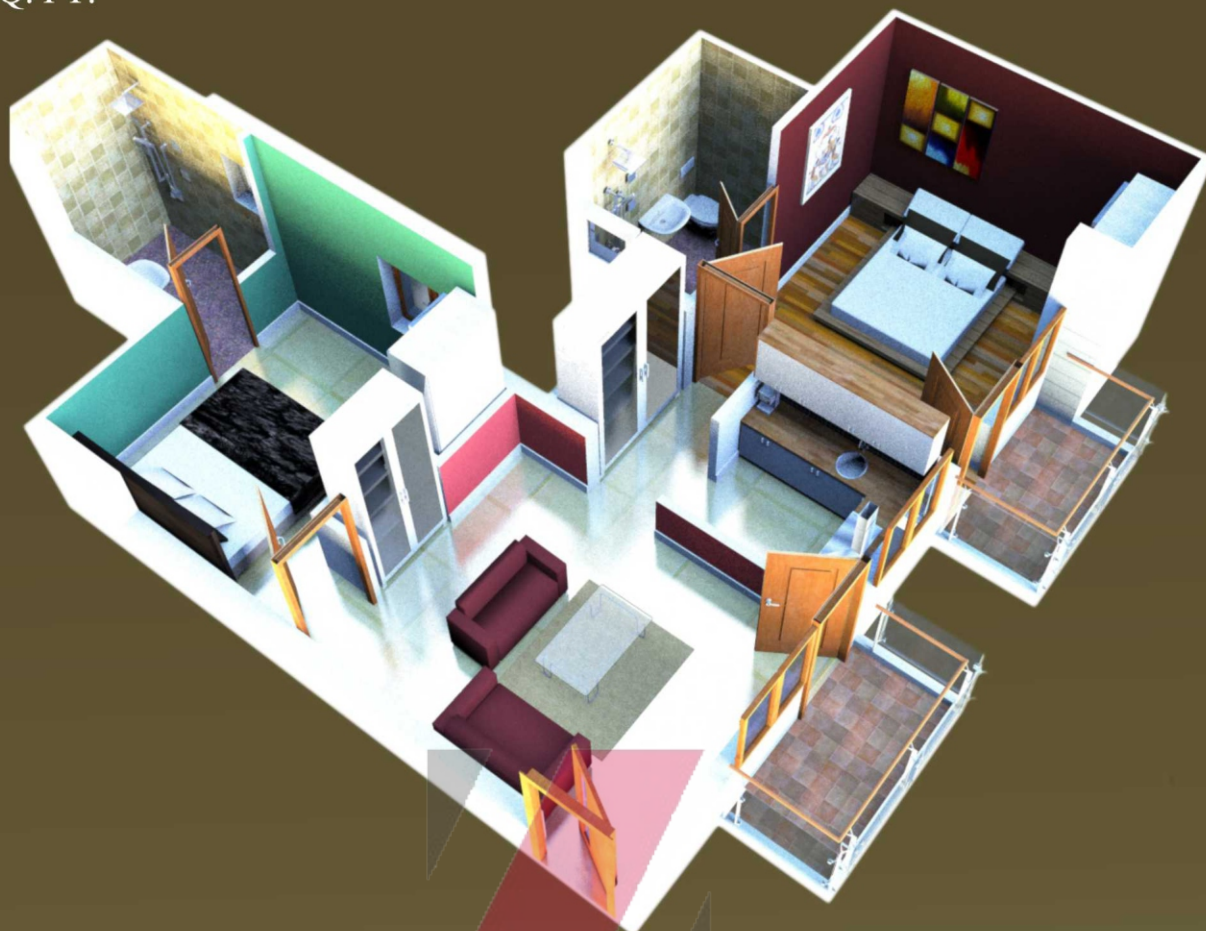
A6- 660 SQ. FT.
(1BHK)



B4,B6- 890 SQ. FT.
(2BHK 890)



A5-950 SQ. FT.
(2BHK)



B3,B5-990 SQ. FT.
(2BHK)



B1, B2-1100
(2BHK)



B7-400 SQ. FT.
(Studio)



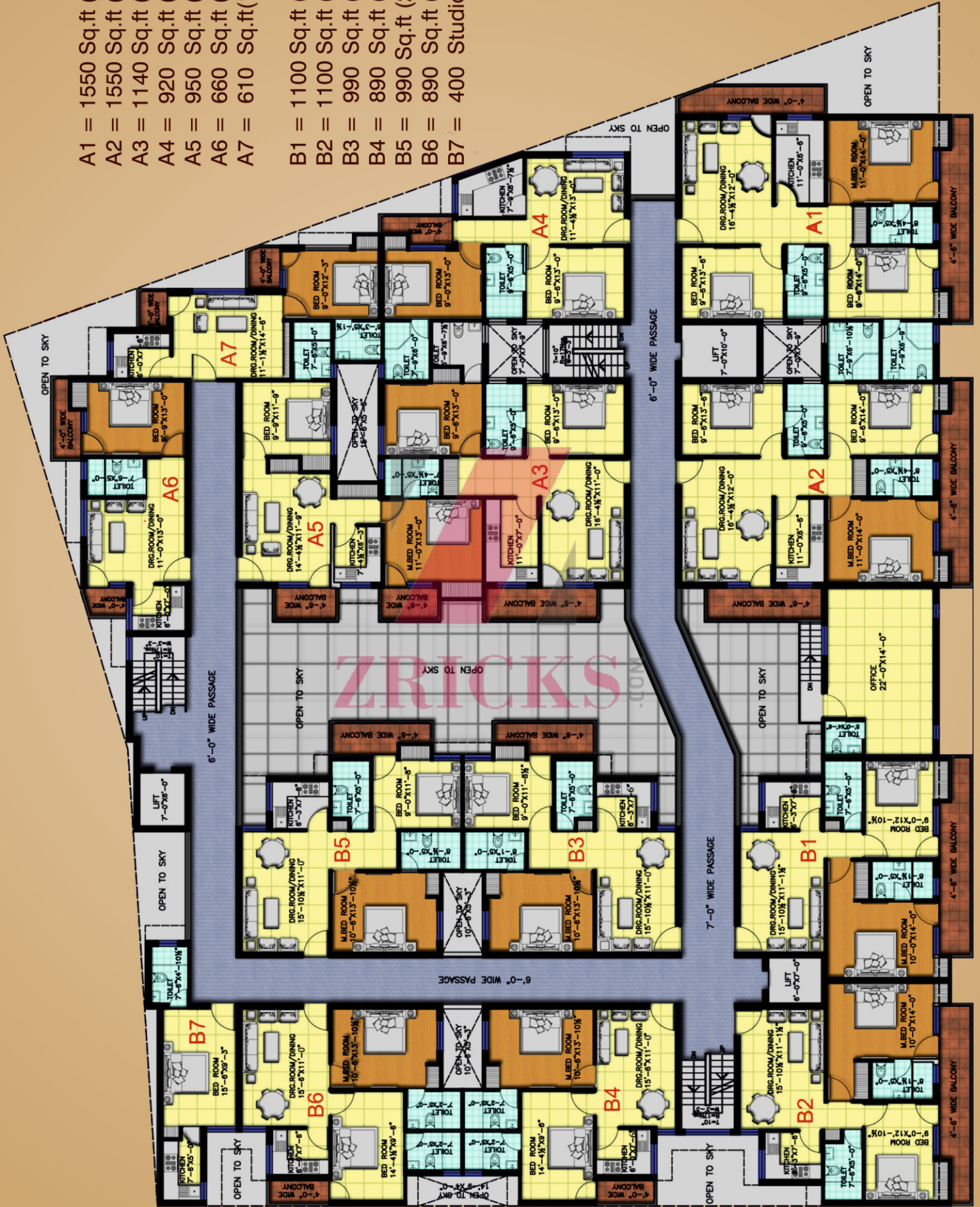
ZRICKS.COM

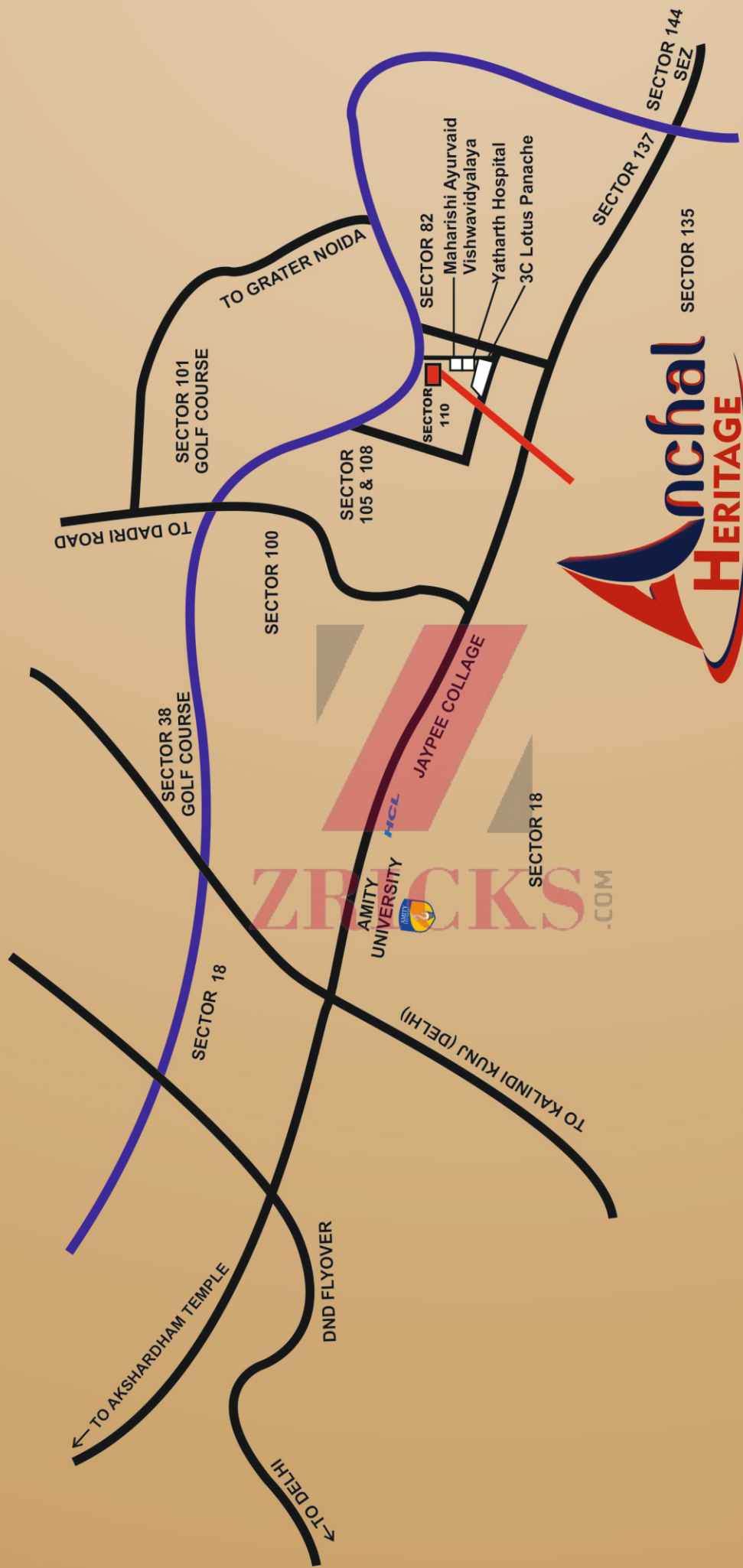
A1, A2-1550
(3BHK)



A1 = 1550 Sq.ft (3BHK)
 A2 = 1550 Sq.ft (3BHK)
 A3 = 1140 Sq.ft (2BHK)
 A4 = 920 Sq.ft (2BHK)
 A5 = 950 Sq.ft (2BHK)
 A6 = 660 Sq.ft (1BHK)
 A7 = 610 Sq.ft (1BHK)

B1 = 1100 Sq.ft (2BHK)
 B2 = 1100 Sq.ft (2BHK)
 B3 = 990 Sq.ft (2BHK)
 B4 = 890 Sq.ft (2BHK)
 B5 = 990 Sq.ft (2BHK)
 B6 = 890 Sq.ft (2BHK)
 B7 = 400 Studio Appt





ZBRCKS.COM



———— Neoshape Infratech ————

Head Office :

D-56, Ground & IInd Floor, Sector-2, Noida - 201301, U.P., INDIA

ZRICKS .COM
Tell : +91-0120-4858500

SMS : NS 56767

Email : info@neoshape.in, neoshapeinfratech@gmail.com

Web : www.neoshape.in

Toll Free No. : 1800 103 1400

Follow us on :-



www.facebook.com/neoshape.infratech



twitter.com/NeoShape_Infra



linkedin.com/company/NeoShape