



FORTUNE
residency



ZRICKS





ZRICKS



VASU INFRASTRUCTURE PVT. LTD.



ZRICKS



ZRICKS.COM

TULIP

AREA = 945 SQ. FT.

2 Bedrooms + Drawing / Dining

2 Toilets

2 Balconies



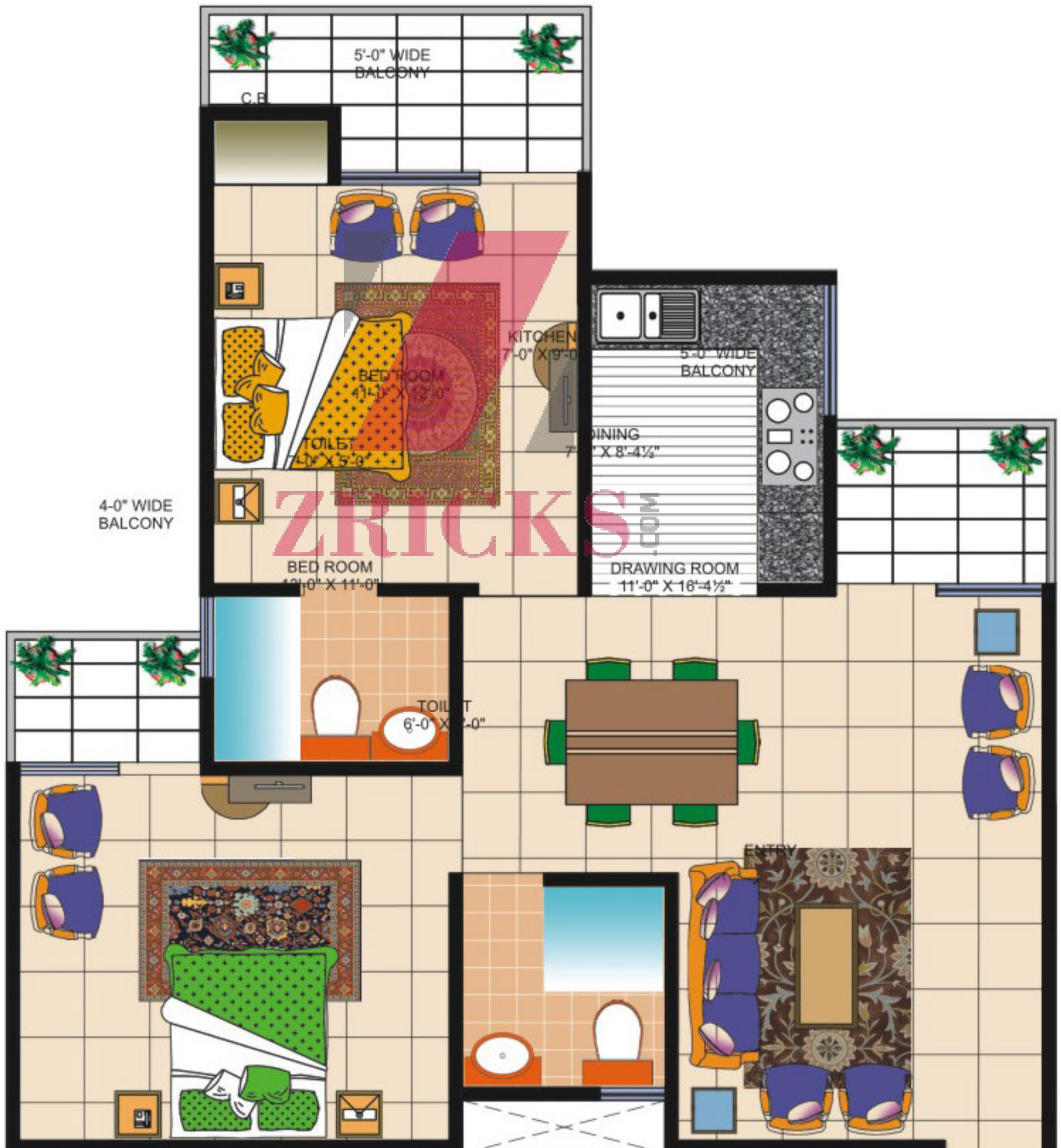
LOTUS

AREA = 1150 SQ. FT.

2 Bedrooms + Drawing / Dining

2 Toilets

3 Balconies



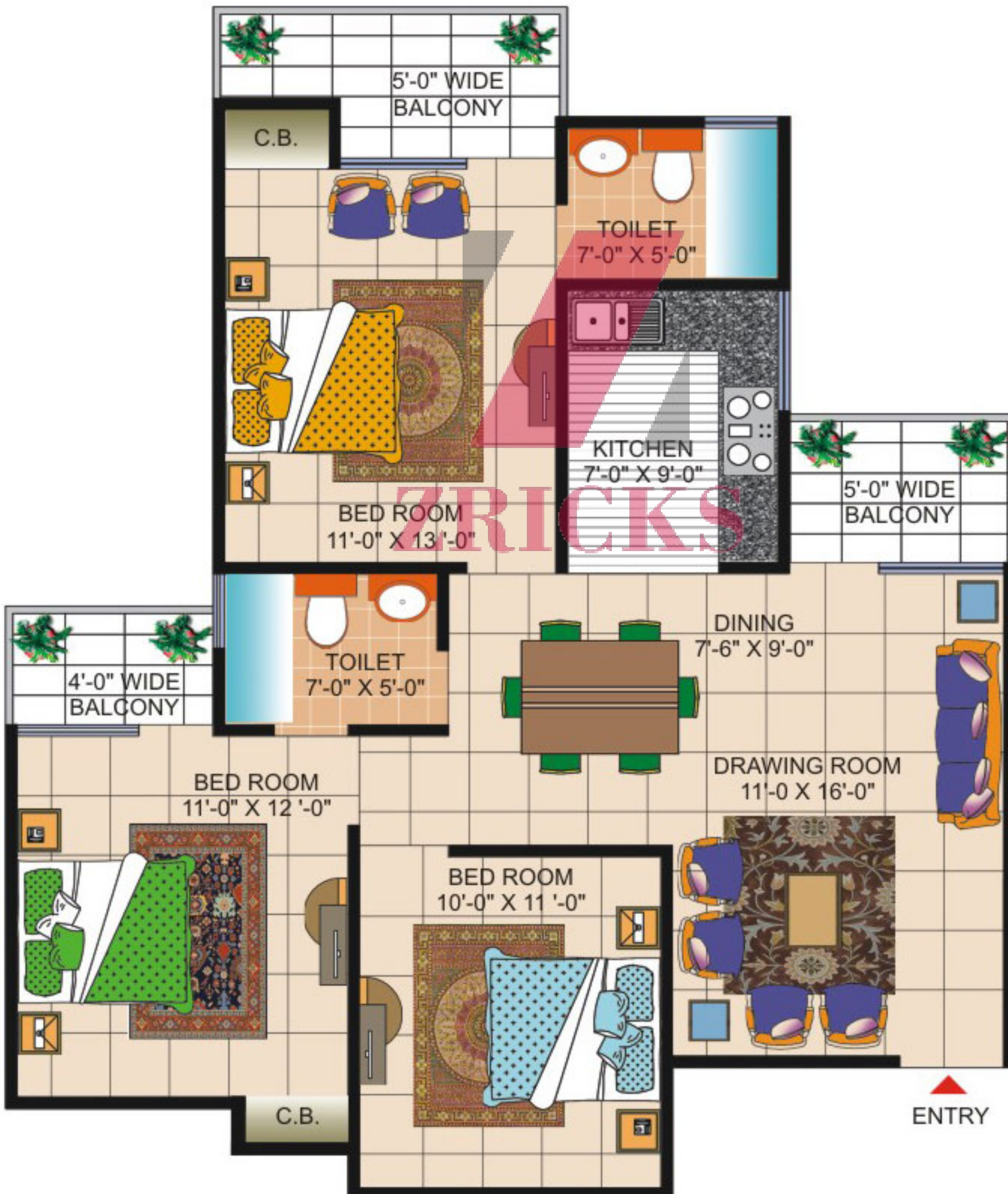
DAFFODIL-2

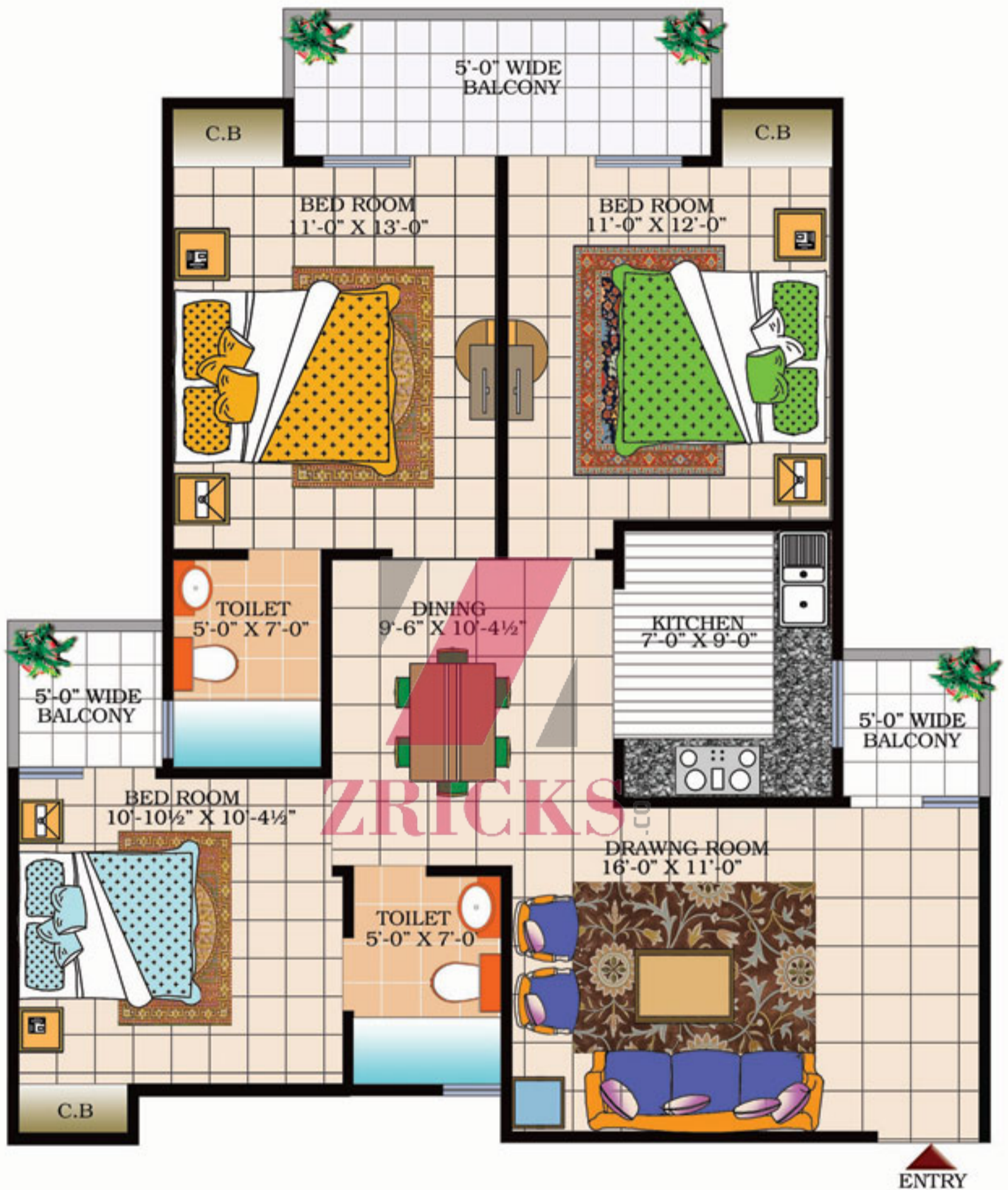
AREA = 1325 SQ. FT.

3 Bedrooms + Drawing / Dining

2 Toilets

3 Balconies





DAFFODIL-2

Super Area = 1350 sq. ft.

3 Bed Room + Drawing/Dining
+ 2 Toilets +3 Balconies

DAFFODIL-1

AREA = 1690 SQ. FT.

3 Bedrooms + Drawing / Dining

2 Toilets + Store + Dress

5 Balconies



LOCATION MAP

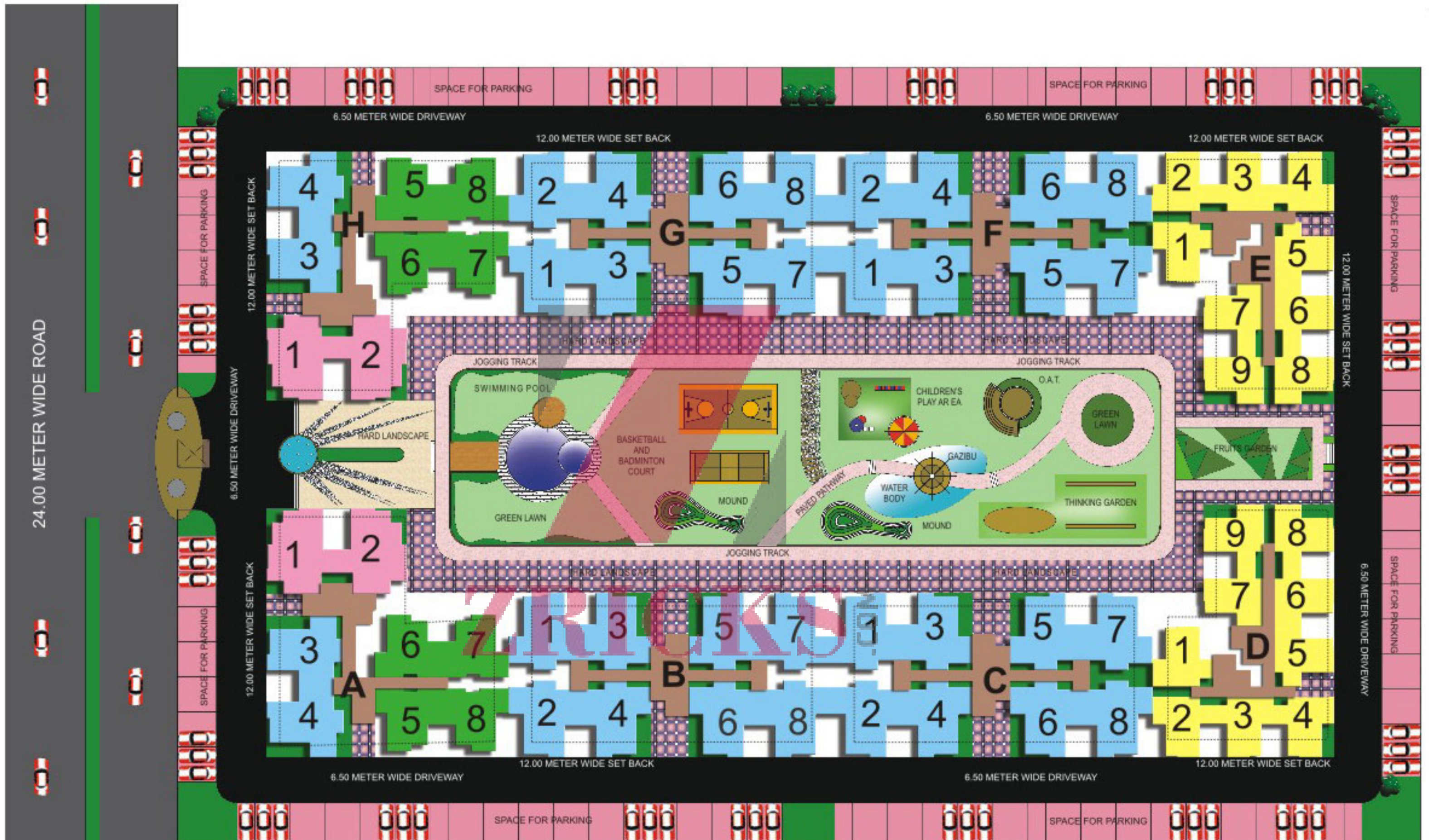


ZRICKS.COM

Not to Scale

SITE PLAN

Disclaimer : All specifications, designed layout, conditions etc. are only indicative and some of these can be changed at the discretion of the builder. This are purely conceptual and not a legal offering.



1690 SQ.F.T. DAFFODIL - 1

1325 SQ. FT. DAFFODIL - 2

1150 SQ.FT. LOTUS

945 SQ.FT. TULIP



SPECIFICATIONS

EARTHQUAKE RESISTANT STRUCTURE

LIVING/DINING /LOBBY

FLOORING

Vitrified Tiles in Drawing/Dining, Bed Rooms & Kitchen
Anti-Skid Tiles in Balconies & Toilets.

DOORS/WINDOWS

All external door & window frames in wood / aluminium, and inner door frames of Marandi wood or equivalent. Doors made of painted flush shutter.

KITCHEN

Granite working platform with 2ft. high glazed ceramic tiles above it, with stainless steel sink and semi modular kitchen.

WATER SUPPLY

Underground and overhead water tanks with pumps for 24X7 uninterrupted water supply.

TOILETS

Provision for Hot & Cold water system. Glazed tiles in pleasing colours on walls up to door level. European W.C. basins & cisterns in white shade.

INTERIOR FINISH

All Internal walls plastered & painted in off white shade of oil bound distemper, POP Surface & Cornices in drawing/dining room and bedrooms.

EXTERIOR FINISH

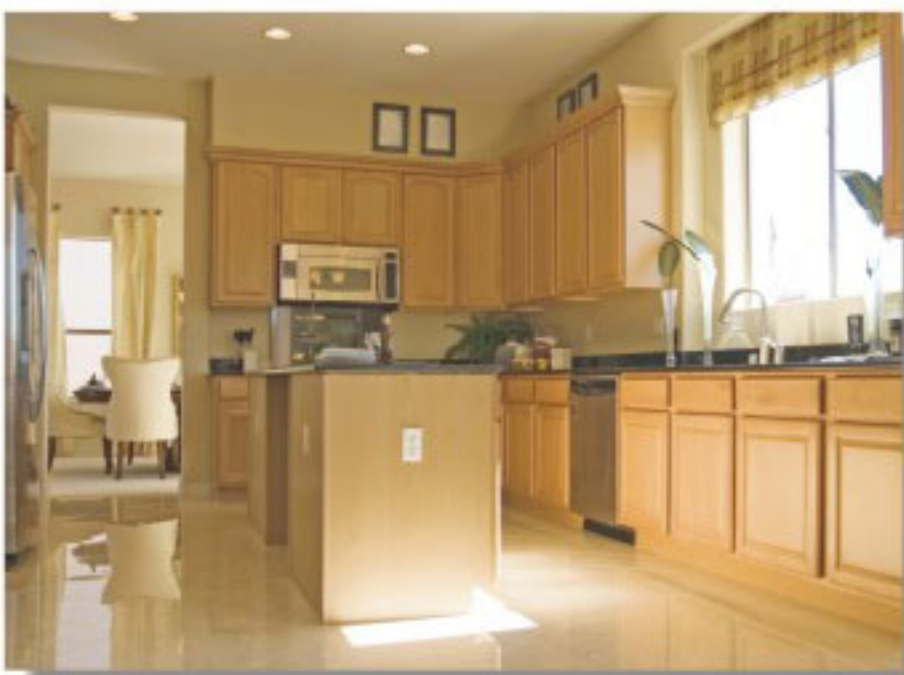
Ultra Modern & elegant permanent exterior finish with high quality texture paint.

ELECTRICALS

ISI Multi strand copper wiring in concealed P.V.C. conduit tubes. Provision for adequate light and power points and as well as telephone & TV outlets with protective M.C.B.s.

HARDWARE

All fittings of powder coated aluminium/ steel.



NOTES

- ☞ Photographs are only indicative & not actual site photographs.
- ☞ Area in all categories of apartments may vary upto $\pm 3\%$ with out any change in cost.
- ☞ However, incase the variation is beyond $\pm 3\%$, pro-rata charges are applicable.