



Casa Greens 1

2 & 3 BHK LUXURY APARTMENTS • G. Noida (West)

Go *Green* Casa *Green*



It's a home one has always aspired for. CASA GREENS 1, situated in Greater Noida (West) epitomizes lifestyle that closest to being perfect. Boasting of superb connectivity and meticulous planning, CASA GREENS 1 has been designed to help you lead a life without care. In the company of greenery and humming birds no effort has been spared to offer you a home that's truly a splendor.

HIGHLIGHTS

- Approx. 80% green area
- Modern Landscape Park
- Location on 60 mtr. road
- Adjoining 7 acres park
- Modern water bodies
- Just 2 Km. from NH-24*
- 1Km from proposed Metro station*
- 15 Min. drive from Sec-18, Noida
- Well ventilated apartments
- Almost all units are three side open
- Energy efficient flats
- Vastu complaint
- French window in every unit
- Multilevel security through CCTV surveillance
- 24 x 7 security
- 100% power backup
- Dedicated Parking (Available Automated Parking)
- Non Polluted Apartment
- Internal Garden with modern landscaping
- A complete residential apartment
- No commercial activity in front of the apartment
- Corner Plot

FEATURES

- High-tech club with swimming pool
- Ultra modern club, Gym, Health club
- Sauna & Steam
- Yoga & Meditation atrium
- Tennis court, Badminton court, Squash
- Table tennis, Billiards, Pool table
- Children's play area
- Grocessory shop
- Kids play school
- Swimming pool
- Kids splash pool
- Baby Care Centre
- Spa
- Saloon
- Coffee Lounge
- Steam Iron & Laundry

*Conditions apply

Masterpiece By Architect **Hafeez Contractor**

CONSULTANTS	
Principal Architect Architect Hafeez Contractor	Resident Architect DAAT India Private Limited Design Architecture and Associate Technologies
Structural Engineer CE CON Engg.	MEP Consultant Sunil Nayyar Consultants Pvt. Ltd.

■ SPECIFICATIONS ■

STRUCTURE

- Earthquake Resistant, R.R.C Frame Structure as per ISI codes & IIT Approved.

FLOORING

- | | | |
|-------------------|---|------------------------|
| • Live / Dining | - | Vitrified Tiles |
| • Master Bed Room | - | Laminated Wooden Floor |
| • Bed Room | - | Vitrified Tiles |
| • Toilet | - | Anti Skid Tiles |
| • Kitchen | - | Vitrified Tiles |
| • Balcony | - | Anti Skid Tiles |

WALL & CEILING FINISH

- | | | |
|--------------------------|---|--|
| • Internal Wall Finishes | - | Oil Bound Distemper |
| • External Wall Finishes | - | Texture Paint |
| • Toilet | - | Glazed Ceramic Tiles Upto 7'-0" height |
| • Kitchen | - | Ceramic Tiles 2'-0" Above Counter |

COUNTER

- | | | |
|-----------|---|---------------|
| • Kitchen | - | Granite Stone |
| • Toilet | - | Granite Stone |

DOOR AND WINDOWS

- | | | |
|-----------------|---|--|
| • Door Frames | - | Seasoned Hardwood |
| • Door Shutters | - | Teak Finish Flush Doors |
| • Entrance Door | - | Teak Wood Paneled |
| • Windows | - | Powder coated Aluminum Frames & Shutters |

FITTINGS & FIXTURES

- White Sanitary Fixture with CP Fittings, Stainless Steel Kitchen Sink with drain Board.

ELECTRICAL FITTING

- Electrical wiring with Copper conductors in concealed Conduits as per ISI code, Switches and Sockets of reputed makes.

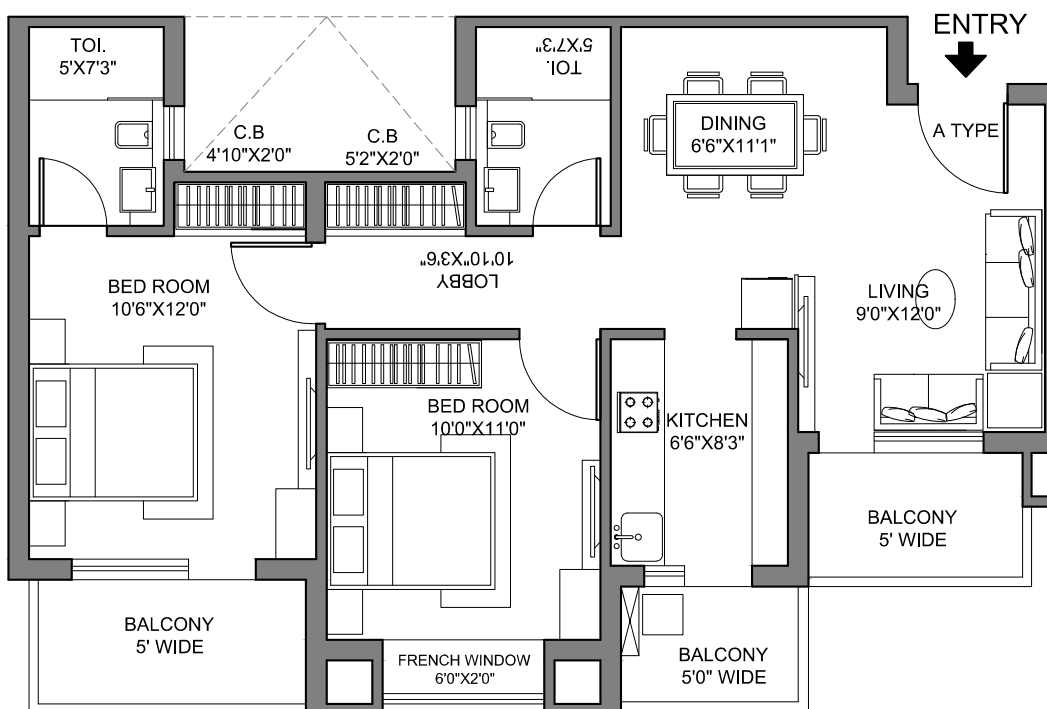
COMMON AREAS

- Staircases - Kota Stone / Marble Flooring Washable Texture Paint in Internal Walls.
- Corridor - Vitrified Flooring.
- Washable Texture Paint in Internal Walls.
- Entrance Lobby - Marble / Granite / Vitrified Flooring.
- Stone Cladding in walls.
- Washable Texture Paint in Internal Walls.

UNIT PLAN

2BHK + 2 Toilet + 3 Balconies + French Window

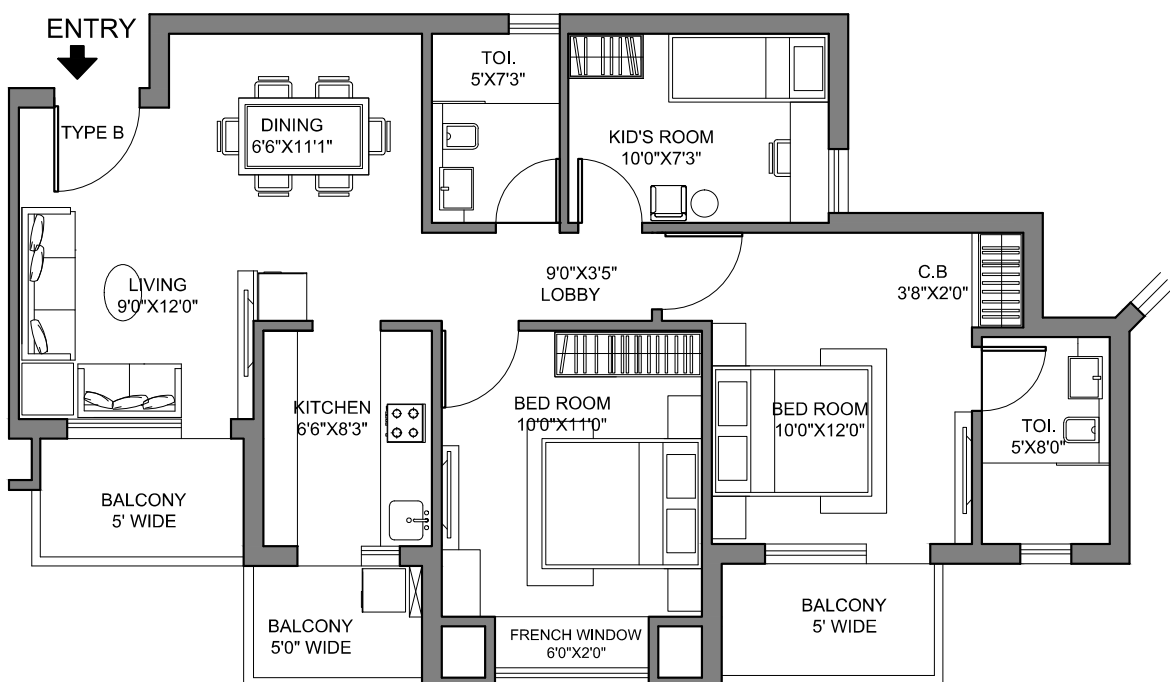
Super Builtup Area = 1050 Sq. Ft.



UNIT PLAN

3BHK + 2 Toilet + 3 Balconies + French Window

Super Builtup Area = 1140 Sq. Ft.



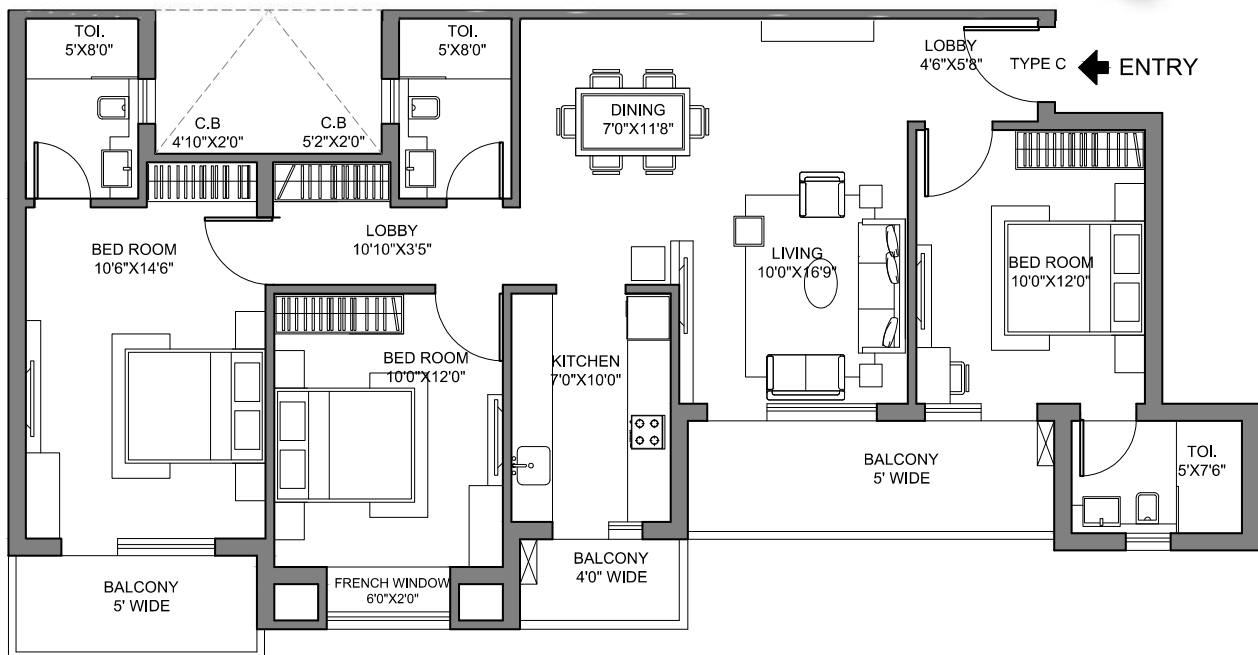
UNIT PLAN

3BHK + 3 Toilet + 3 Balconies + French Window

Super Builtup Area = 1490 Sq. Ft.



ZRICKS.COM



■ LAYOUT PLAN ■



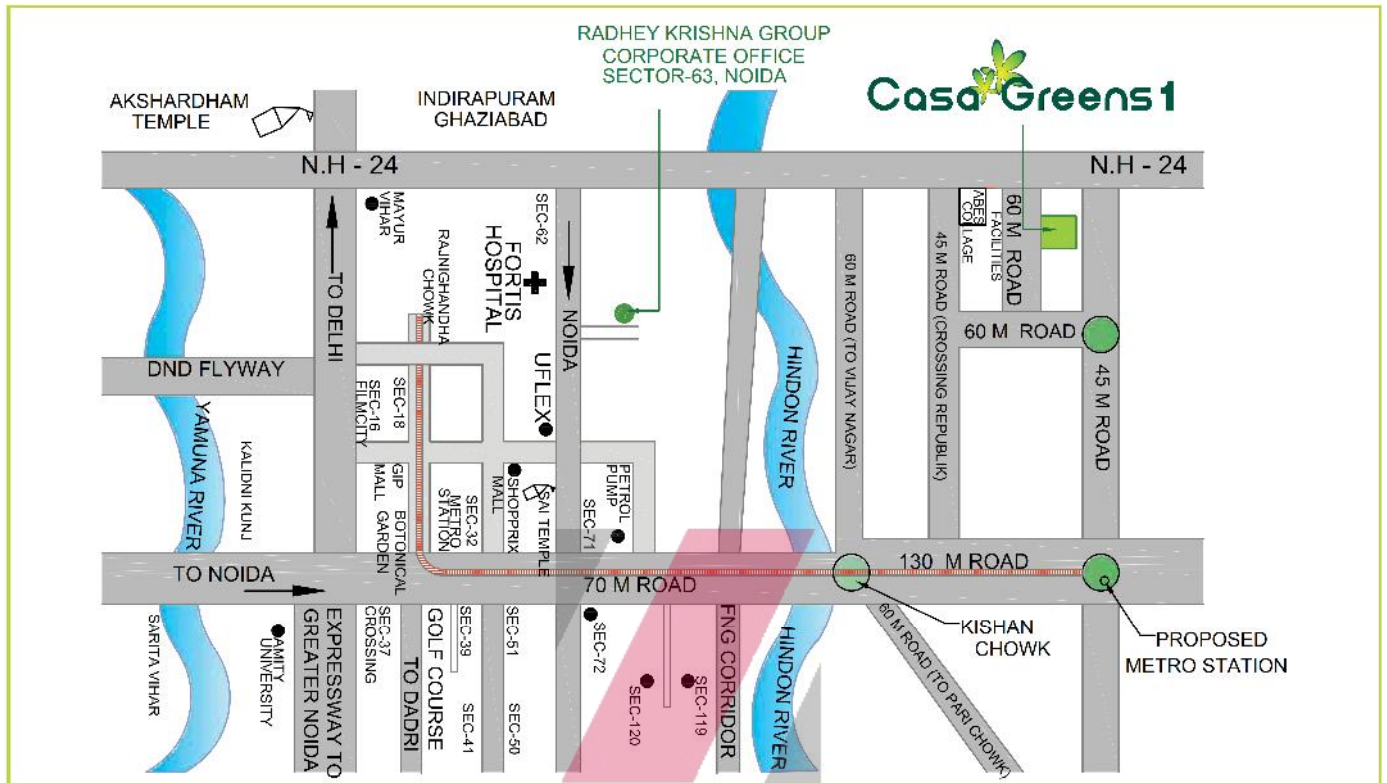
- | | | | | |
|--------|-------------------|------------------------------------|-------------------------|-----------------|
| LEGEND | 1. Main Entry | 3A. Kids Pool | 6. Kids Play Area | 9. Mound Garden |
| | 2. Tower Drop Off | 4. Half Basketball/Badminton Court | 7. Interactive Fountain | 10. Party Lawn |
| | 3. Swimming Pool | 5. Tree Court | 8. Tower Exit - Pergola | |
| | | | | |

3BHK + 3T-1490 sq. ft.

3BHK + 2T-1140 sq. ft.

2BHK + 2T-1050 sq. ft.

■ LOCATION MAP ■

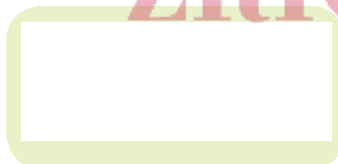


LUCKNOW PROJECTS

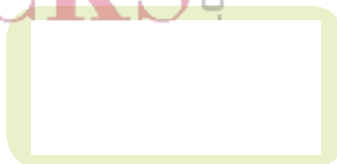
Possession started



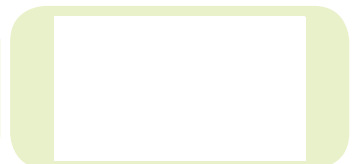
On Going



Up Coming



Up Coming



DELHI NCR PROJECTS

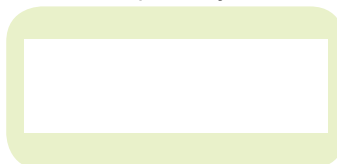
On Going



Up Coming



Up Coming



Up Coming



Radhey Krishna Techno Build Pvt. Ltd.

(An ISO 9001 : 2008 Certified Company)

Corporate Office: B - 49, Sector - 63, Noida, Gautam Budh Nagar, U.P.-201301, www.radheykrishnagroup.com

Site Office: GH - 04A, Sector - 16, Gr. Noida (West), Gautam Budh Nagar, U.P.-201308

Sales Enquiry: 8130411111, 0120-4895000 (20 lines), query@radheykrishnagroup.com

Regional Office: 601-602, Eldeco Corporate Tower, Vibhuti Khand, Gomti Nagar, Lucknow, U.P.-226010