

Sportshome

2, 3, 4 BHK LUXURIOUS APARTMENTS



**READY
STEADY
PLAY!**

GET READY FOR SPORTY LIFE



ZRICKS.COM

A STRONG PRESENCE IN REALTY ARENA

Dev Sai Group directors boasts of an unceasing track-record of association with many large scale residential and commercial projects. At Dev Sai Group, we understand the importance of timely deliveries and strict adherence to commitments.

The Group underpins the age old values of trust, business integrity and transparency along with a modern business model. It emphasizes an astute corporate conduct to create a difference in its chosen sphere. At Dev Sai Group, we strive to put our life-breath in each of our creations and our dedicated effort in planning and launch of Sportshome bears testimony to this unrelenting truth.



GREEN GREENER GREENEST

GET READY FOR SPORTY LIFE

TRICKS

THE SAFE-CASTLE OF THE CHOSEN FEW

Sportshome is conveniently located within NCR. This is a premium location in proximity to all the important business and leisure hubs of the city.

Modern technology, innovation and hi-tech security systems at Sportshome are groundbreaking & revolutionarily advanced. The surveillance at your Sportshome is CCTV controlled and security personnel man all entry and exit points, 24x7, to make you and your loved ones completely secure.



Sportshome makes a brilliant architectural statement and reinforces the motive of understated elegance. Planned to perfection, it is a green-responsible endeavour, and reduces the energy burden by optimizing sunlight and wind flow within the home. Painsstaking attention to detail ensures that every nook and cranny is blissfully symmetric with your ideas and aspirations of a perfect home.

AN ARTISTIC IMPRESSION OF THE PROJECT

EXPERIENCE THE RARE GRANDEUR OF GREEN RESPLENDENCE

With a 9 hole golf course and multifarious sports activities, the views at Sportshome come in three variants. Green, Greener, Greenest. Indeed, an eyeful of this eco-alive habitat is like a day out in a Nature Park. The entire landscape is dotted with designer water features, stone-scapes, florid vistas and manicured greens. The ground level is lush emerald and completely traffic free, thanks to peripheral vehicular access.

- /// Fully integrated township
- /// 82% open landscape area
- /// Vaastu friendly and fengshui layout
- /// Earth quake resistant structure
- /// Planned to the last detail
- /// Ample car parking
- /// Ample power and water supply
- /// 2 elevators per tower
- /// Gated condomium ensuring round the clock
3 tire security with cctv monitoring
- /// Eco friendly design
- /// Censor gates for vehicle entry
- /// 100% power back-up
- /// Low density project

TRICKS.COM



**REDEFINE YOUR SINGULAR PRESENCE
AT THE CREST OF FINE LIVING**

Sportshome is one of those rare possessions, which others will look up to admiration, while you call it home. It is the towering symbol of grace and stature, you can proudly confer to your family, and flaunt to the entire world.

Sportshome is the difference between ground and the heights you were always meant to achieve. As the name suggests, it is one unique address where sports is not a part of name sake amenities but a way of life. It stands tall as a new age symbol of accomplishment, and reinforces the tall stature of those who are at the top of their game.

AUSTIN TOWER

ACE TOWER

ASPEN TOWER

AMBROSE
TOWER

TRICKS



READY STEADY PLAY!

GET READY FOR SPORTY LIFE

- / Commercial shopping mall
- / Pro-shops
- / Old age home
- / Hospital
- / Cricket academy
- / Swimming centre
- / Golf course
- / Indoor stadium
- / Tennis centre
- / Indoor multipurpose hall
- / Gymnastics
- / Badminton
- / Squash
- / Basket ball court
- / Volley ball court
- / Rock Climbing

ZRICKS



*Proposed facilities in Sports City



Living at Sportshome opens the doors to an innovative clubbing concept. The club is a state-of-art pleasure hub with swimming pool and green view gym. Every day is a rush of high adrenalin action and every evening is a party with like-minded group of friends and neighbours.

Keeping the comfort of residents in consideration, grocery store and daily utility shops have also been envisaged within the complex.



Ministri of Sports - **THE CLUB** **HOUSE**

GET READY FOR SPORTY LIFE

A TREASURE CHEST OF SPORTING ACTION FOR YOUR GOOD HEALTH

Sport a smile everyday at Sportshome. Begin your days with brisk neighbourhood sporting action, and top it up with sport court games with friends in the evening. Indeed, here, everything has been laid out so you can champion the causes of high end living with your loved ones.

Keeping yourself in shape will now be a thrilling activity, which you would enjoy and cherish for a lifetime. And the best part is, it will all be possible, without leaving your neighbourhood, right at your doorstep.

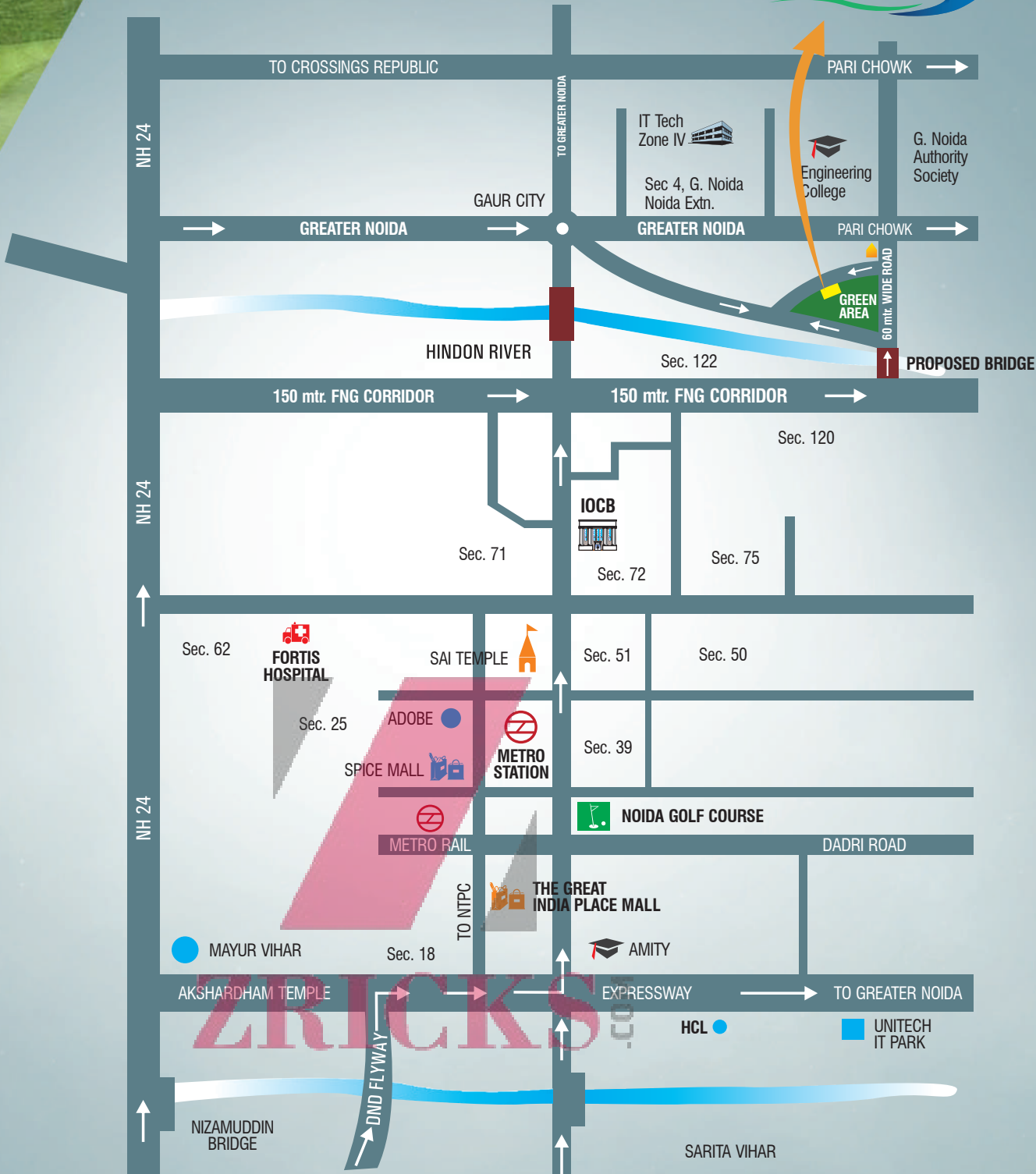
- ✓ In house club with exclusive facilities
- ✓ Swimming pool with splash pool for kids
- ✓ State-of-art gym
- ✓ Restaurant and coffee shop
- ✓ Indoor sports facilities
- ✓ Community hall for social get togethers
- ✓ Exclusive hang out zone





- Located inside the massive 130 acres sports city of its kind in Delhi NCR
- 0 Min. from MS Dhoni sports academy
- 0 Min. from proposed bridge to sec-78, Noida
- 1 Min. from FNG corridor
- 1 Min. from kisan chowk / Gaur round about
- 1 Min. from the projected metro station

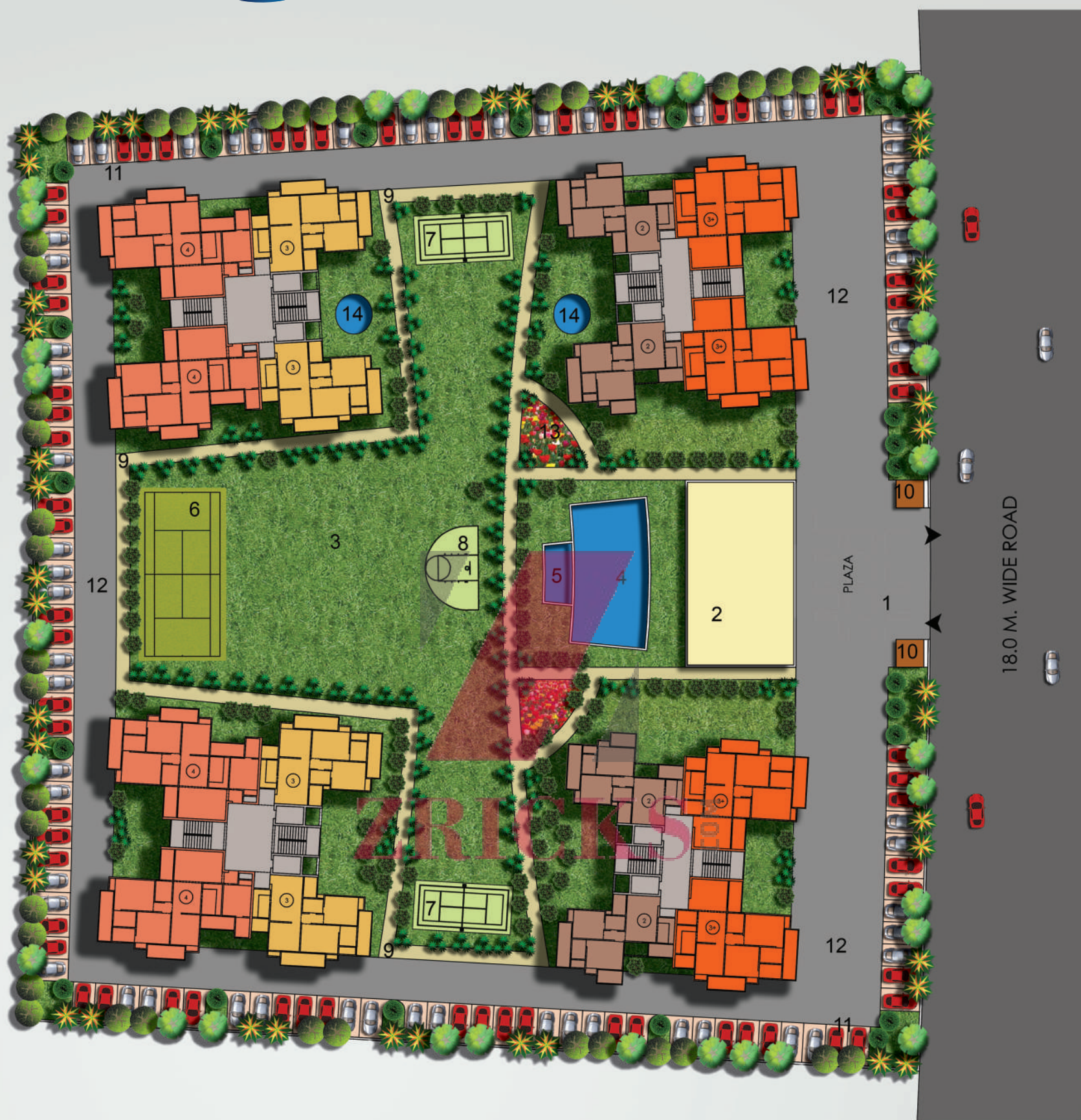
- 2 Min. from 5 star hotel
- 3 Min. from NH-24
- 5 Min. from the city centre metro station
- 18 Min. from Akshardham temple
- 20 Min. from ISBT (Anand Vihar Delhi)
- 20 Min. from railway station (Anand Vihar Delhi)



LOCATION AT NCR

GET READY FOR SPORTY LIFE





SITE PLAN



TYPE 4
1985 sq. ft.



TYPE 3+
1680 sq. ft.

TYPE P1
3210 sq. ft.

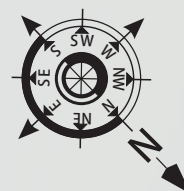


TYPE 3
1365 sq. ft.



TYPE 2
1140 sq. ft.

TYPE P2
3680 sq. ft.



SPECIFICATIONS



SUPER STRUCTURE :

- Earthquake resistant R.C.C. framed structure

FLOORING :

- Laminated wooden flooring in master bedroom
- Vitrified tiles in drawing / dining / bedroom and kitchen
- Combination of ceramic / antiskid tiles in toilet and balconies

KITCHEN :

- Granite top on working platform
- Stainless steel sink
- Ceramic tiles 2 feet above working platform

TOILET :

- Ceramic tiles up to 7 feet
- Standard bath fittings
- Hot and cold water arrangements

DOOR & WINDOWS :

- External doors & windows made of uPVC / powder coated aluminium
- Internal hardwood frames with flush doors

INSIDE WALL FINISH :

- Wall putty with OBD

EXTERNAL FAÇADE :

- Exterior in super paint finish

ELECTRICAL :

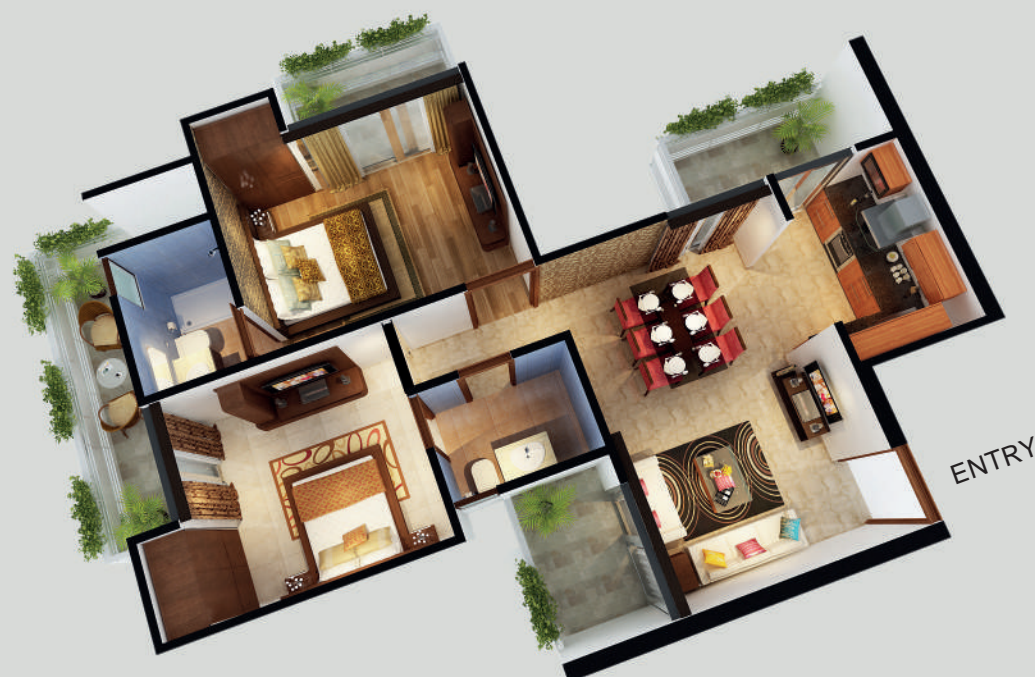
- Copper wiring in concealed PVC conduits
- Provision for TV, telephone points in living rooms and all bedrooms



LEGENDS

- | | | |
|--------------------|---------------------|----------------------------|
| 1. ENTERENCE PLAZA | 6. TENNIS | 11. PARKING |
| 2. CLuB | 7. BADMINTON | 12.DRIVE THROUG |
| 3. LAWN | 8. HALF BASKET BALL | 13. GARDEN |
| 4. SWIMMING POOL | 9. JOGGING TRACK | 14. WATER BODIES |
| 5. KID'S POOL | 10. GuARD ROOM | 15. ALL WEATHER PLANTATION |

2 BHK *UNIT 2*
SUPER AREA 1140 SQ. FT.



1 Sq. Mtr.= 10.764 Sq. Ft.

Super area means and includes covered area of flat plus area under common areas such as corridors, passages, walls, staircases, munities, projections, recessed spaces below window grills, lift machine rooms, space for metering cubicles etc. Designs / Specifications / Area etc. are subject to any amendments as may be approved and / or required by relevant authorities.

UNIT 3 3 BHK
SUPER AREA 1365 SQ. FT.



3 BHK UNIT 3+
SUPER AREA 1680 SQ. FT.



UNIT 4

4 BHK

SUPER AREA 1985 SQ. FT.





ZRICKS.COM

UNIT P-2 4 BHK
SUPER AREA 3680 SQ. FT.

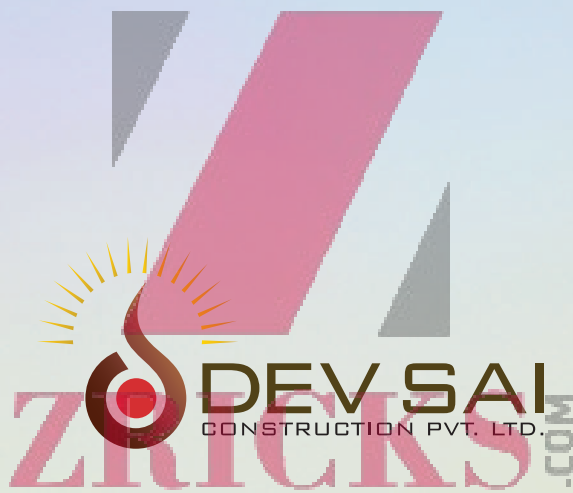


UNIT P-1 4 BHK
SUPER AREA 3210 SQ. FT.



ZRICKS.COM





SITE OFFICE

Sports City, Plot No. GH-02, Adjoining Tech
zone-IV, Greater Noida (West)
Mob. : +91 90 13 10 10 10, 90 13 30 30 30

CORPORATE OFFICE

A 42/6, 102, First Floor, Pinnacle Tower,
Sector-62, Noida 201301
Tel : +91 120 410 1011

e-mail: info@sportshome.in | web: www.sportshome.in | sms **PIAY** to **53030**



Disclaimer: All designs, perspectives, elevations, specification, layouts plans, etc. and indicative are subject to change. Accessories shown in some of the pictures in this brochure such as furniture, cabinets, electrical, appliances, light fittings, walls & floor textures, etc. are indicative / decorative are not part of the sale offered.