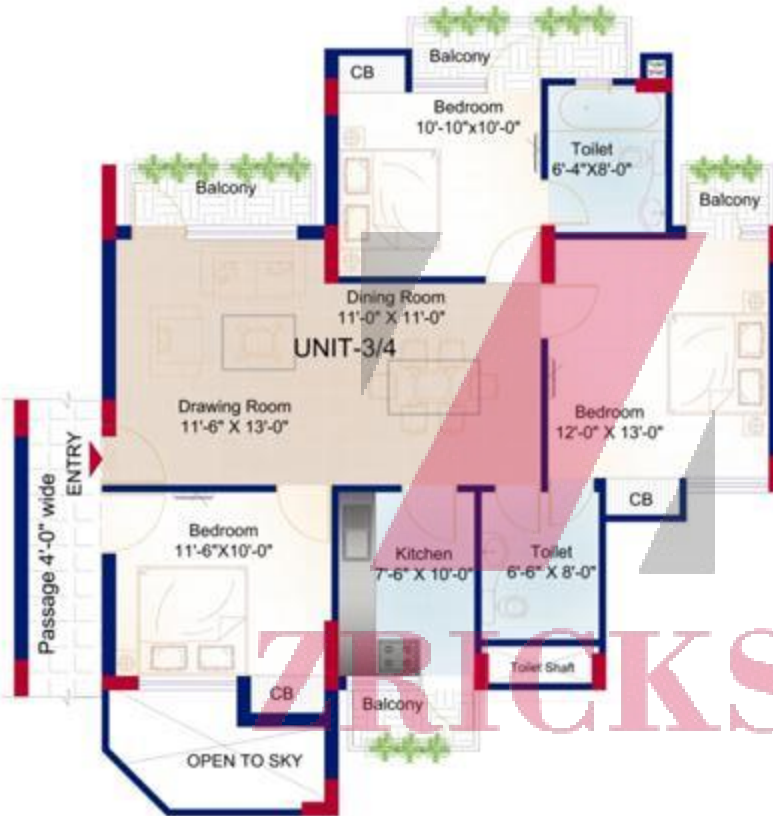




ZRICKS

2ND, 4TH, 6TH,
8TH & 10TH FLOOR



21 MILE STONE
RESIDENCY

CONCEPTUAL SCHEMATIC PLAN

UNIT - 3/4 (TOWER-B)

OWNER -

IFCI INFRASTRUCTURE DEVELOPMENT LTD.
14TH FLOOR, IFCI TOWER B1, NEWRA PLACE,
NEW DELHI-110002.

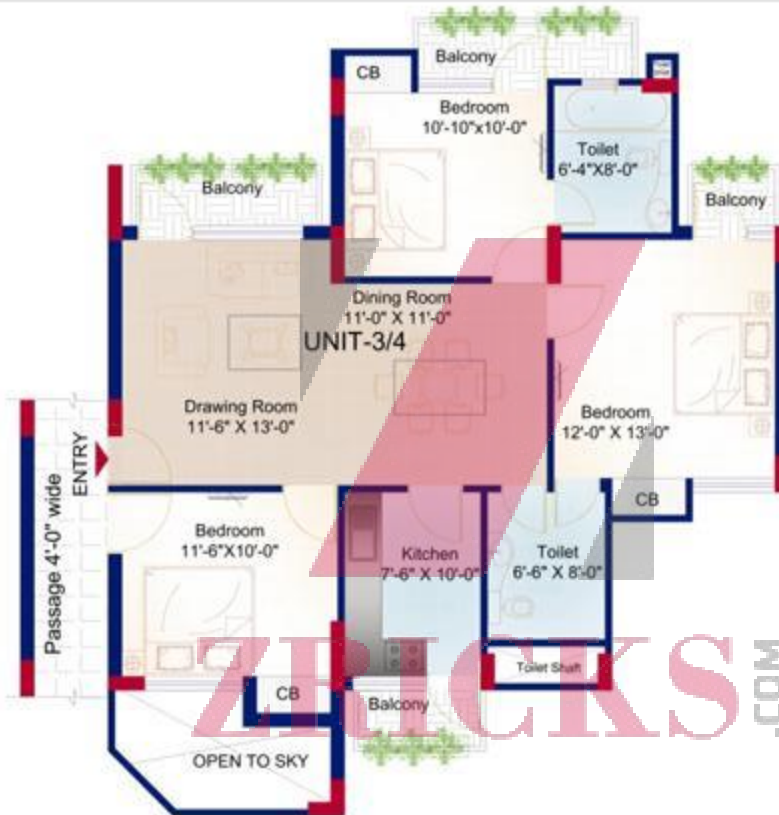


PROJECT CONSULTANTS -

HOLISTIC URBAN INNOVATIONS PVT. LTD.
PLANNING & ARCHITECTURE (P) & EPC ACTIVITIES
DESIGN & ENGINEER SERVICES BUILDING TECH. SERVICES
THE COOPERATIVE TOWER B-41, SEC- 46, NOIDA-201 301
PH. : 0120-427771, FAX : 0120-427708



5TH, 7TH,
9TH FLOOR



21 MILE STONE
RESIDENCY

CONCEPTUAL SCHEMATIC PLAN

UNIT - 3/4 (TOWER-B)

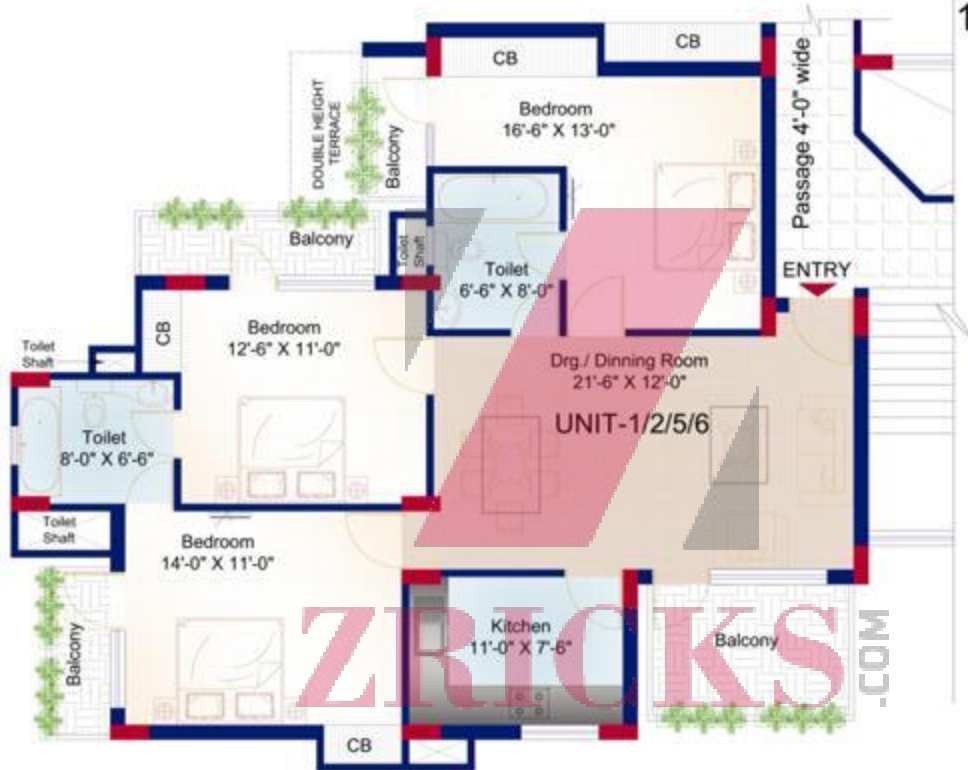
OWNER:
IFCI INFRASTRUCTURE DEVELOPMENT LTD.
14TH FLOOR, IFCI TOWER B1, NEW DELHI PLACE,
NEW DELHI-110002.



PROJECT CONSULTANTS:
HOLISTIC URBAN INNOVATIONS PVT. LTD.
PLANNING & ARCHITECTURE (P) & I&D&C ACTIVITIES
DESIGN & ENGINEERING SERVICES BUILDING TECHNO. SERVICES
THE COOPERATIVE TOWER B-41, SEC- 49, NOIDA-201 301
PH: +91-8860771111 FAX: +91-8860771111



1ST, 3RD, FLOOR
(TOWER- B)



21 MILE STONE
RESIDENCY

CONCEPTUAL SCHEMATIC PLAN

UNIT - 1/2/5/6 (TOWER-B)

OWNER:
IFCI INFRASTRUCTURE DEVELOPMENT LTD.
14TH FLOOR, IFCI TOWER B1, WINDY PLACE,
NEW DELHI-110028.

PROJECT CONSULTANTS -
HOLISTIC URBAN INNOVATIONS PVT. LTD.
PLANNING & ARCHITECTURE (P) & IEPIC ACTIVITIES
DESIGN & ENGINEERING SERVICES BUILDING TECHNO SERVICES
THE OPERATIONAL TOWER B-41, 501, 502, 503 ROAD 2ND BY
PLOT - 208-407771, KAN - 2013427708



2nd, 4th, 6th, 8th & 10th Floor
(TOWER- A)



21 MILE STONE
RESIDENCY

CONCEPTUAL SCHEMATIC PLAN

UNIT - 2/5 (TOWER-A)

OWNER:

IFCI INFRASTRUCTURE DEVELOPMENT LTD.
14TH FLOOR, IFCI TOWER B1, NEWRA PLACE,
NEW DELHI-110002.

PROJECT CONSULTANTS:

HOLISTIC URBAN INNOVATIONS PVT. LTD.
PLANNING & ARCHITECTURE (P) & R&D ACTIVITIES
DESIGN & ENGINEER SERVICES BUILDING TECHNO. SERVICES
THE CORPORATE TOWER 8-41, 8TH FLOOR, 2ND ST
PH. 011-42147171 FAX 011-42147178

IIDL
IFCI INFRASTRUCTURE
DEVELOPMENT LTD.

HOLISTIC
URBAN INNOVATIONS

2ND, 4TH, 6TH,
8TH & 10TH FLOOR
(TOWER-A)



21 MILE STONE
RESIDENCY

CONCEPTUAL SCHEMATIC PLAN

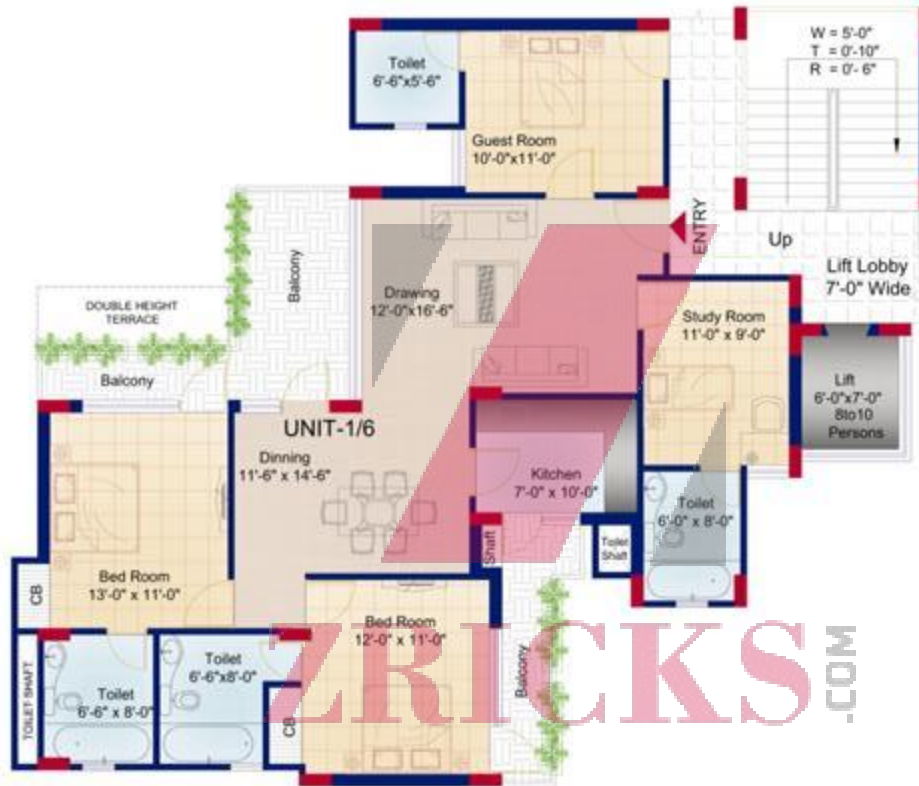
UNIT - 1/6 (TOWER-A)

Client:-
IFCI INFRASTRUCTURE DEVELOPMENT LTD.
14TH FLOOR, IFCI TOWER B1, NEWRA PLACE,
NEW DELHI-110028.

PROJECT CONSULTANTS:-
HOLISTIC URBAN INNOVATIONS PVT. LTD.
PLANNING & ARCHITECTURE (P) & E&C ACTIVITIES
DESIGN & ENGINEER SERVICES BUILDING TECHNO. SERVICES
THE CORPORATE TOWER 8-41, 8th, 9th, 10th & 11th
FLOOR, 12th-14th FLOOR, 15th-16th FLOOR

IIDL
IFCI INFRASTRUCTURE
DEVELOPMENT LTD.





1ST, 3RD, FLOOR
(TOWER-A)

21 MILE STONE RESIDENCY

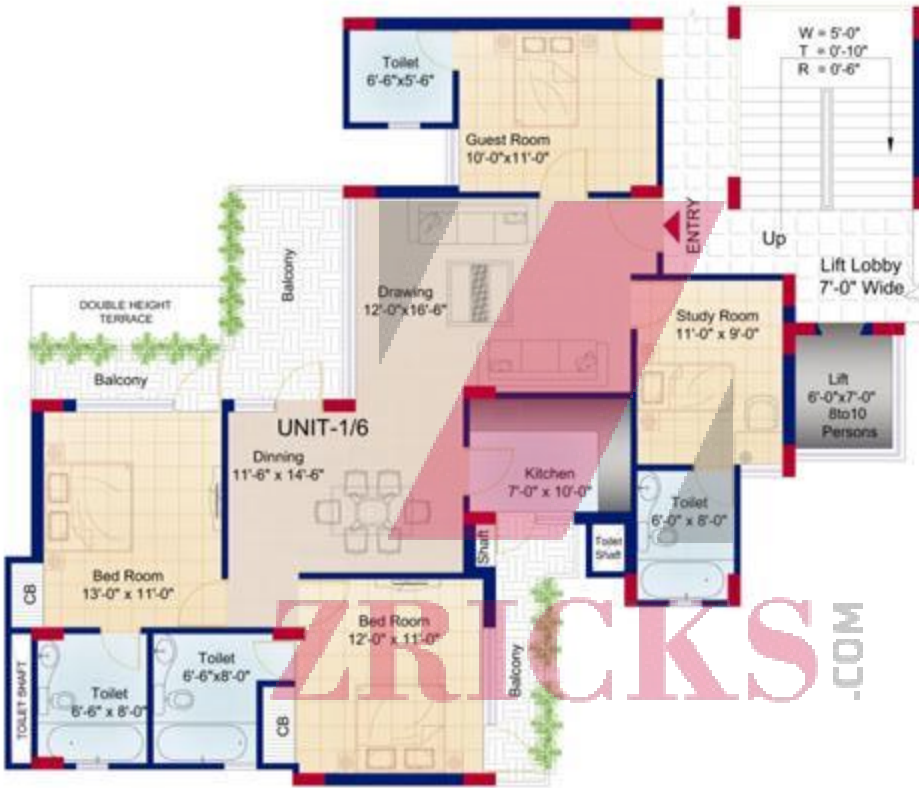
CONCEPTUAL SCHEMATIC PLAN

UNIT - 1/6 (TOWER-A)

OWNER -
IFCI INFRASTRUCTURE DEVELOPMENT LTD.
 14TH FLOOR, IFCI TOWER B1, NEWRA PLACE,
 NEW DELHI-110002.

PROJECT CONSULTANTS -
HOLISTIC URBAN INNOVATIONS PVT. LTD.
 PLANNING & ARCHITECTURE (P) & E&C ACTIVITIES
 DESIGN & ENGINEER SERVICES BUILDING TECHNO. SERVICES
 THE OPERATIONAL TOWER B-11, SEC- 48, NOIDA-201 301
 PH. : 0120-427171, FAX : 0120-427158





5TH, 7TH, 9TH FLOOR
(TOWER-A)

21 MILE STONE RESIDENCY

CONCEPTUAL SCHEMATIC PLAN

UNIT - 1/6 (TOWER-A)

OWNER:
IFCI INFRASTRUCTURE DEVELOPMENT LTD.
45TH FLOOR, IFCI TOWER B1, NEWRA PLACE,
NEW DELHI-110028.

PROJECT CONSULTANTS:
HOLISTIC URBAN INNOVATIONS PVT. LTD.
PLANNING & ARCHITECTURE (P) & EPC ACTIVITIES
DESIGN & ENGINEER SERVICES BUILDING TECH. SERVICES
THE CONSULTANT TOWER 8-41, 801, 80, NOKIA ST BY
PH. +91-8860777111 FAX +91-8860777112



**Mohan Nagar
Crossing**

**21st Milestone
Residency
GHAZIABAD**

Raj Nagar

**ISBT Anand
Vihar**



Layout Plan



21 st Milestone
Residency

Payment Plan & Price list

21st Milestone Residency Payment Plan	
Down Payment Scheme:	
Basic Sale Price (Rs./sqft.)	2160
At the time of Booking	10%
Within 45 days of Booking	85%
At the time of possession	5% + PLC + Additional Charges as stated in sub-para 3 below
Construction Linked Plan:	
Basic Sale Price (Rs./sqft.)	2400
At the time of Booking	10%
Within 45 days of Booking	15%
On the Plinth Level	10%
On casting of 1st floor roof slab	7.50%
On casting of 2nd floor roof slab	7.5%+50% PLC +50% Additional Charges as stated in sub-para 3 below
On casting of 3rd floor roof slab	7.50%
On casting of 4th floor roof slab	7.50%
On casting of 5th floor roof slab	7.50%
On casting of 6th floor roof slab	7.50%
On casting of 7th floor roof slab	7.5%+50%PLC +50%Additional Charges as stated in sub-para 3 below
On casting of 8th floor roof slab	7.50%
At the time of possession	5.00%

3. Additional Charges	
PLC	
Floor(1/2/3/4/5/6) (Rs./per sq.ft.)	200/150/100/75/50/25
Corner (Rs./ per sq.ft.)	50
Club membership (In Rs.)	50000
Parking	
Covered(One Mandatory) (In Rs.)	195000
External Development Charges EDC(Rs./Sq.ft.)	100
Interest Free Maintenance Security FMS (Rs.)	30000
Fire Fighting Charges (FFC) and other utility charges(EEC & Reticulated Cooking Gas) (Rs./Sq.ft.)	100
Power Backup - 5 KVA	100000

Rates are Subject to change

Specifications

Structure

Earthquake proof RCC framed Structure with in fill foam concrete block.

Doors & Windows

Door frames of hard wood and windows of First class Anodised Aluminium windows with glass. Flush door shutters with veneering on both sides in drawing & dining, and one side veneered flush doors in bed rooms to be painted with synthetic enamel paint.

Wall Finishing

Internal: Plastered and painted in pleasing shades .

Bathrooms

Walls: Matching glazed ceramic tiles up to roof height with attractive pencil border.C.P. fitting shall be all chrome single lever. Sanitary ware: English wall mounted type W/c & washbasin.

Modular kitchen & Utility

Granite Counter. Ceramic tiles up to 5' level. Fitting double bown stainless steel sink with drain board. Single lever hot & cold Water mixer.

Common area

Flooring of all common areas shall be in Kota stone.

Electrical

Copper Electrical wiring throughout in concealed conduit with provision for lights & power points as well as TV & Telephone in Molded plastic Switches/Socket with protective MCB's.

Water Supply

Hot & cold pipe system (without geyser) in flats & round the clock water supply in the complex.