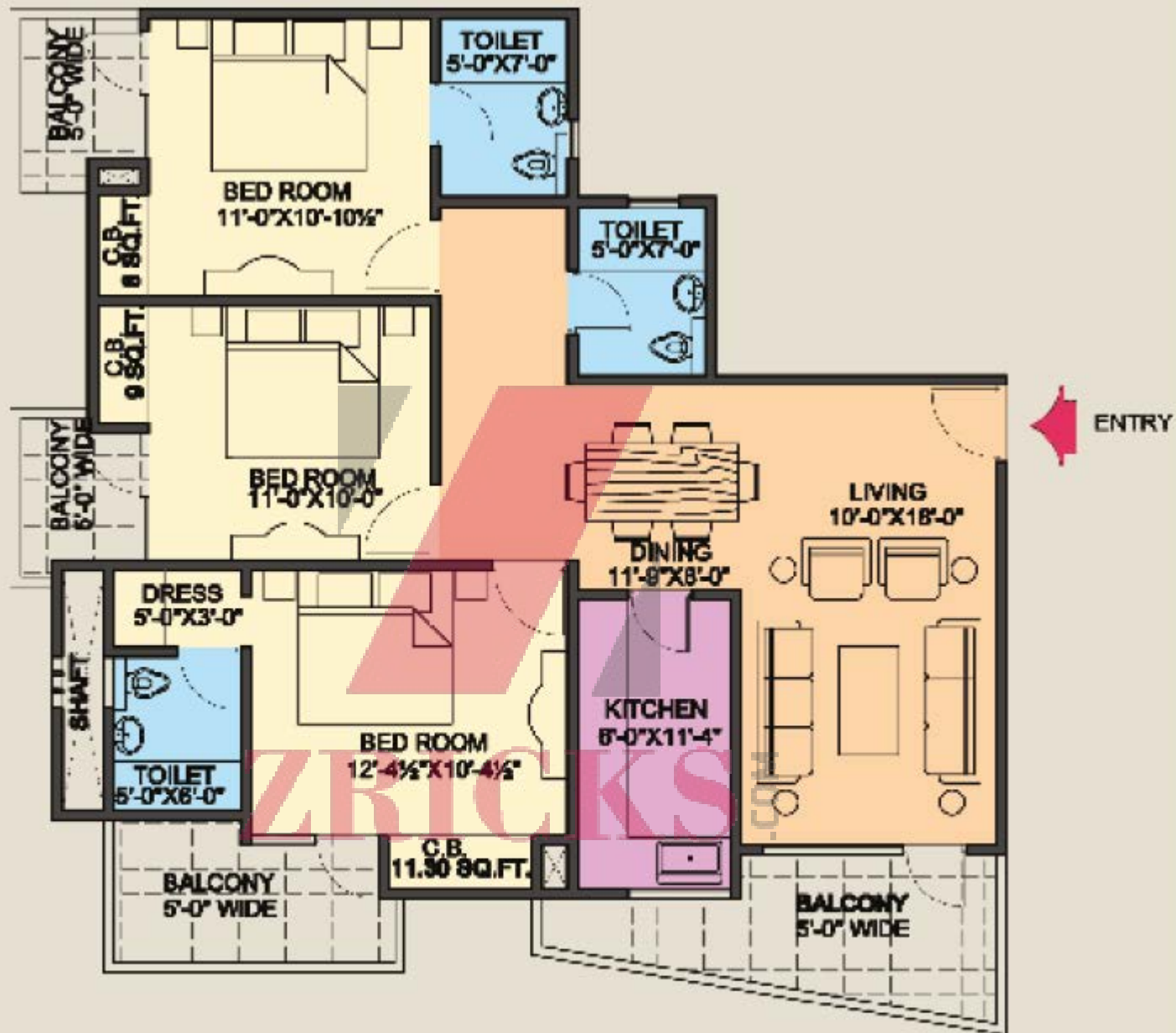
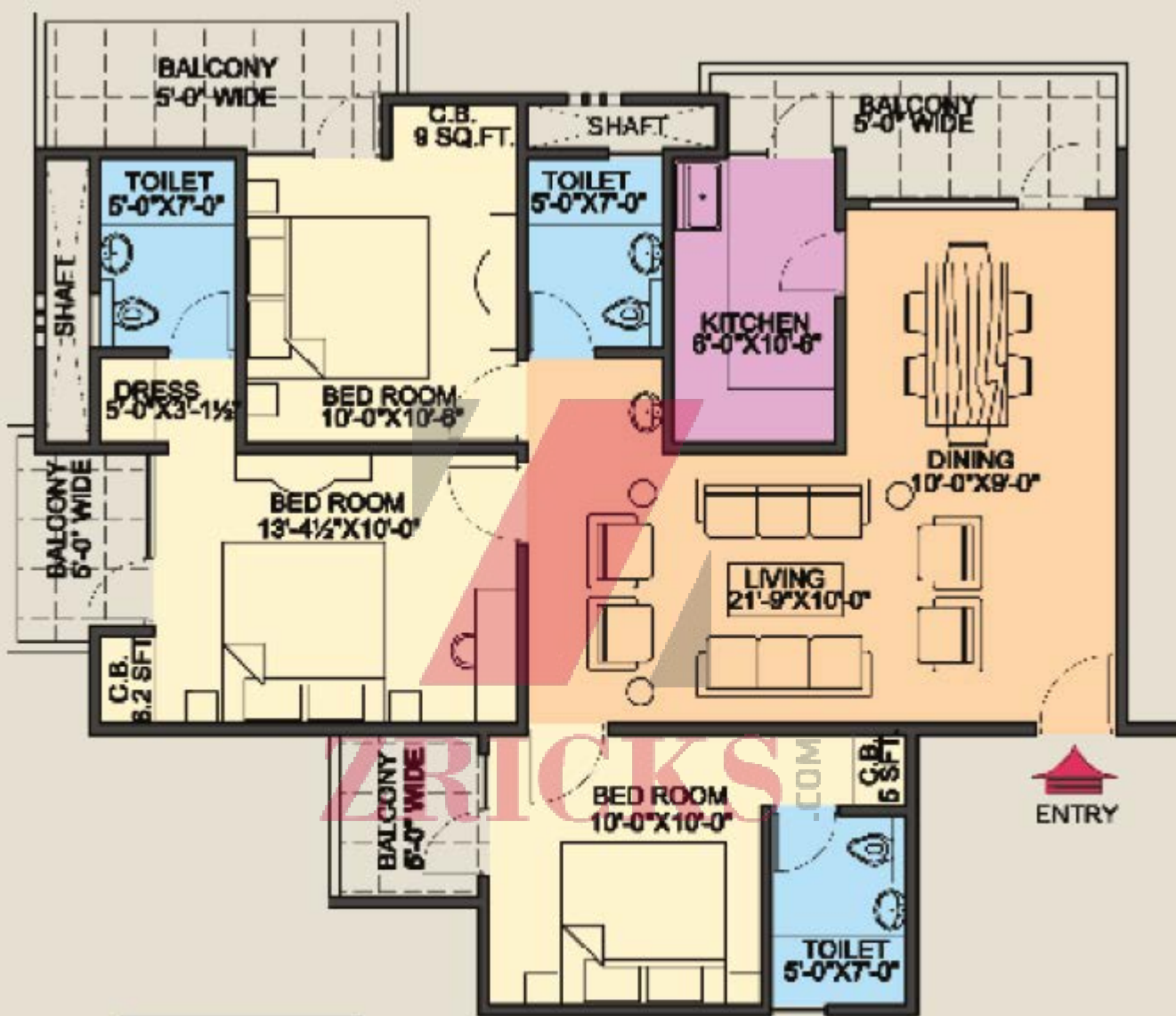


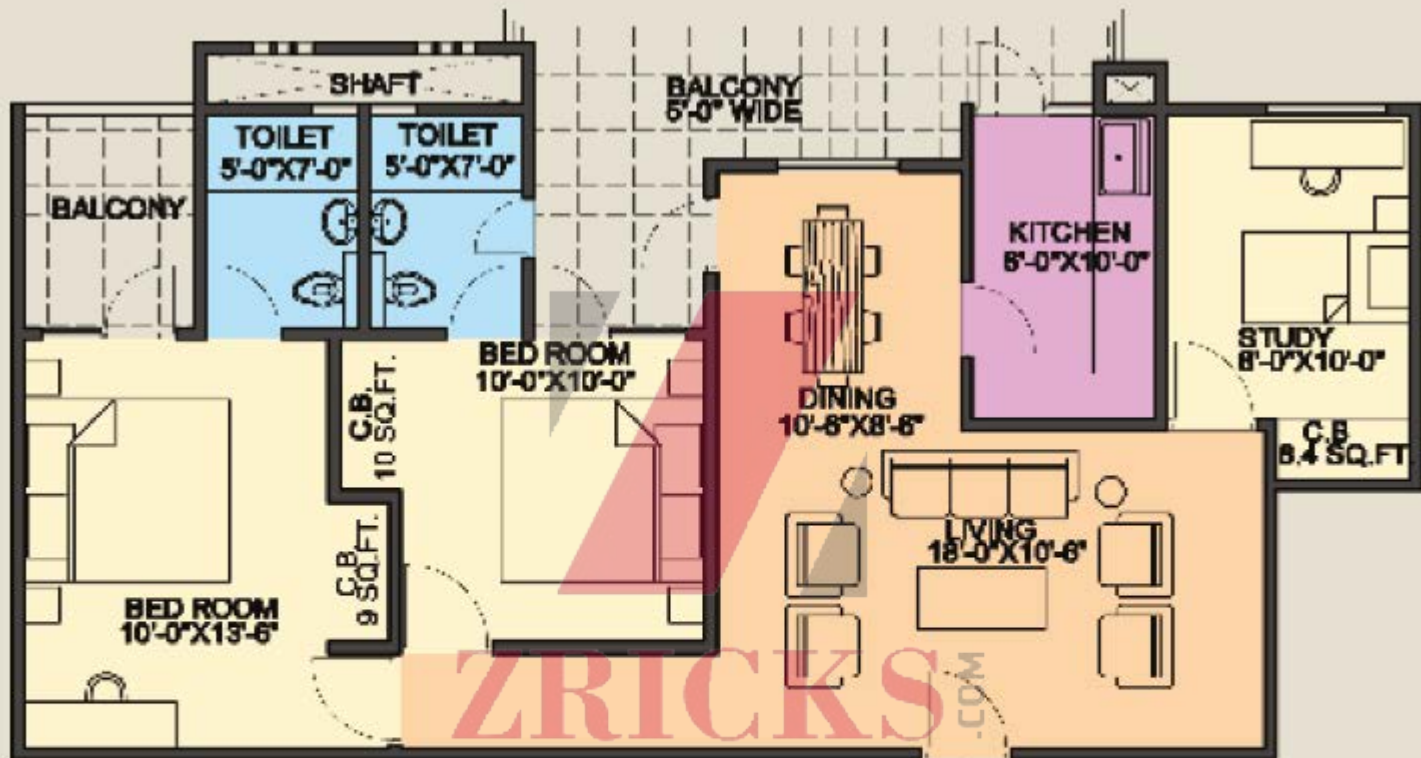


ZBRICKS.COM





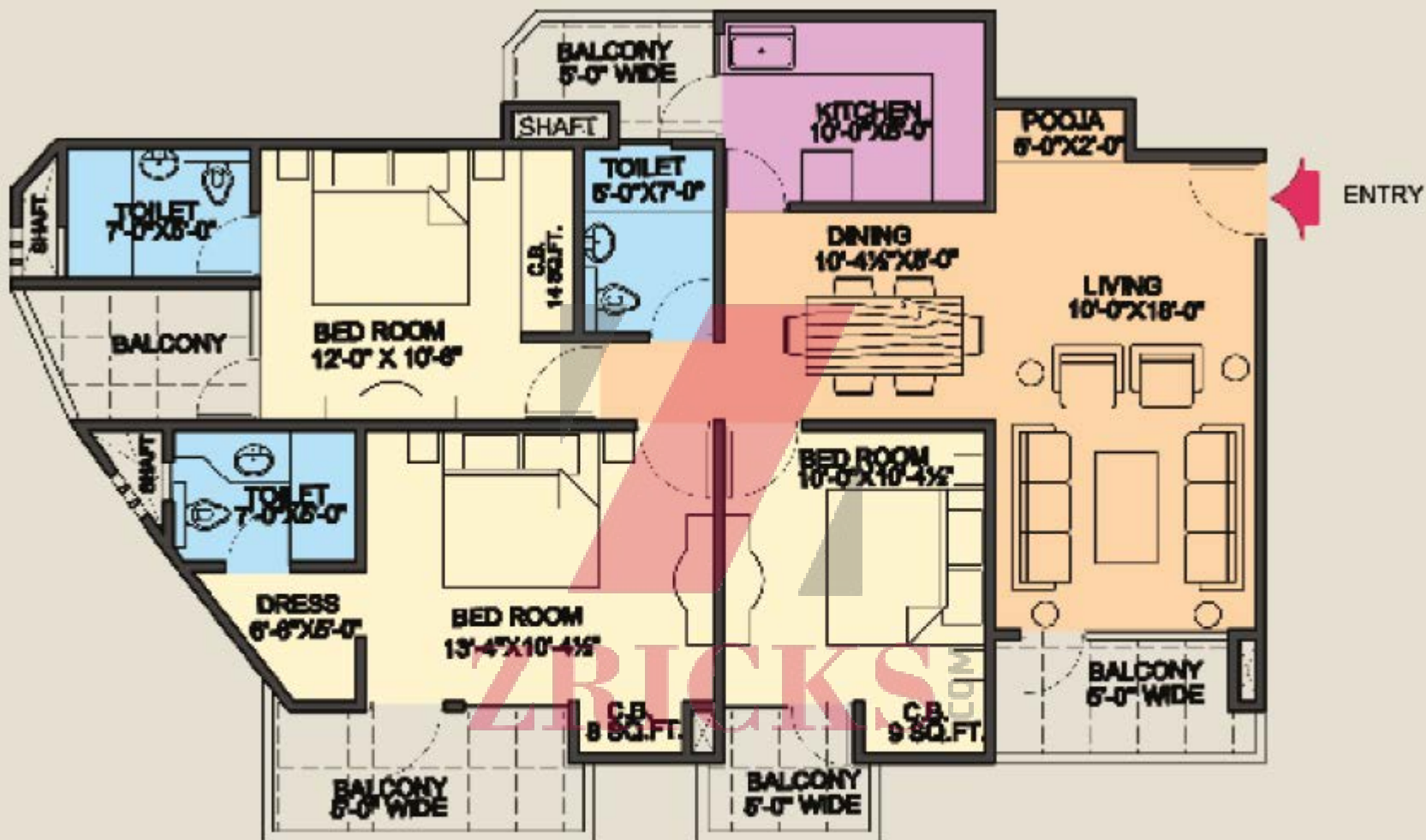
UNIT PLAN
3 BHK TYPE A4 (A 104 - A 1204)
SALE AREA: 1520 SQFT (APPROX.)



UNIT PLAN

2 BHK + STUDY B1 (B 105 - A 1205)

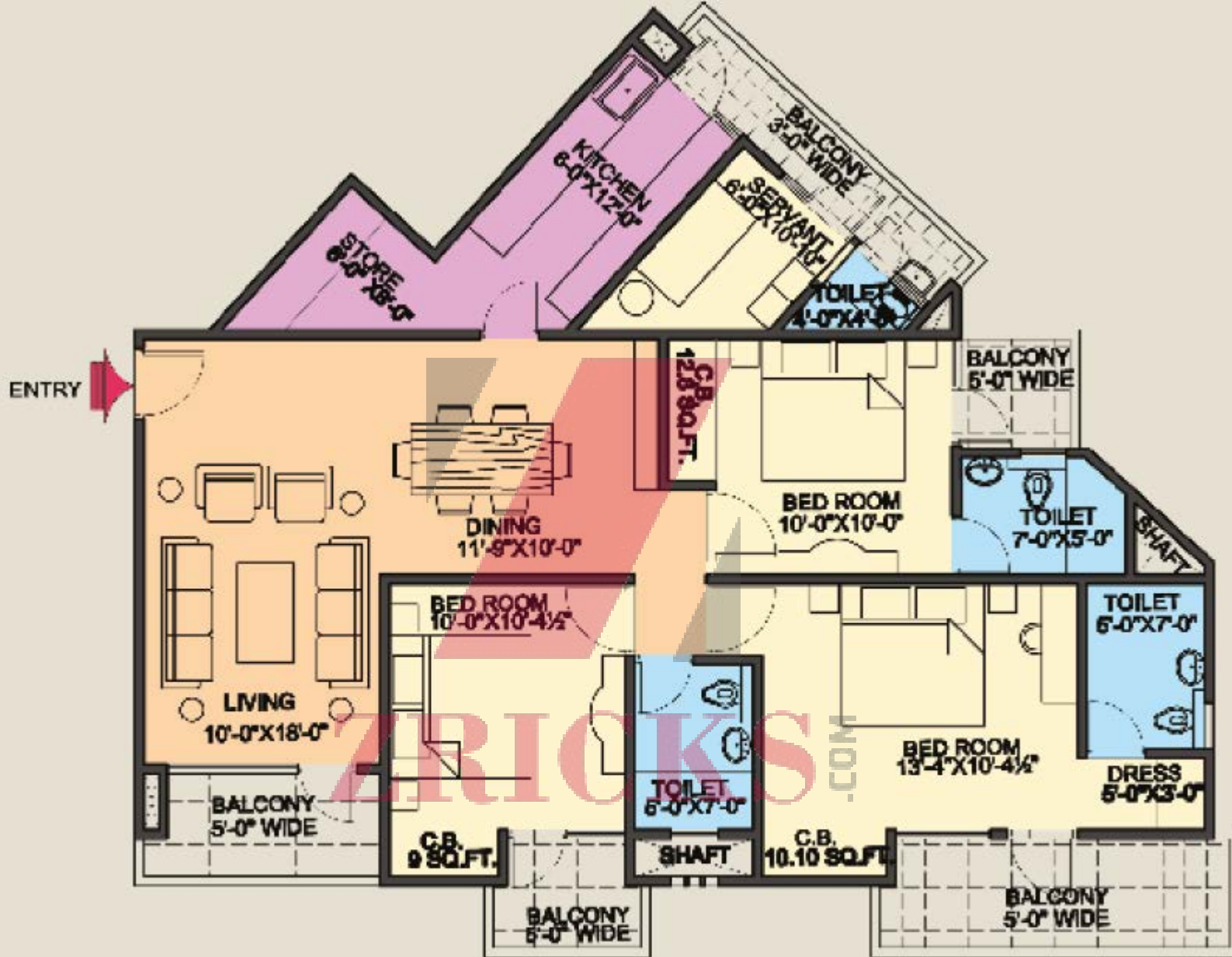
SALE AREA: 1335 SQFT (APPROX.)



UNIT PLAN

3 BHK TYPE A2 (A 102 - A 1202)

SALE AREA: 1520 SQFT (APPROX.)



UNIT PLAN

3 BHK+SER. TYPE A1 (A 101 - A 1201)

SALE AREA: 1690 SQFT (APPROX.)

3 BHK TYPE A4
SALE AREA:1520 SQFT(APPROX.)

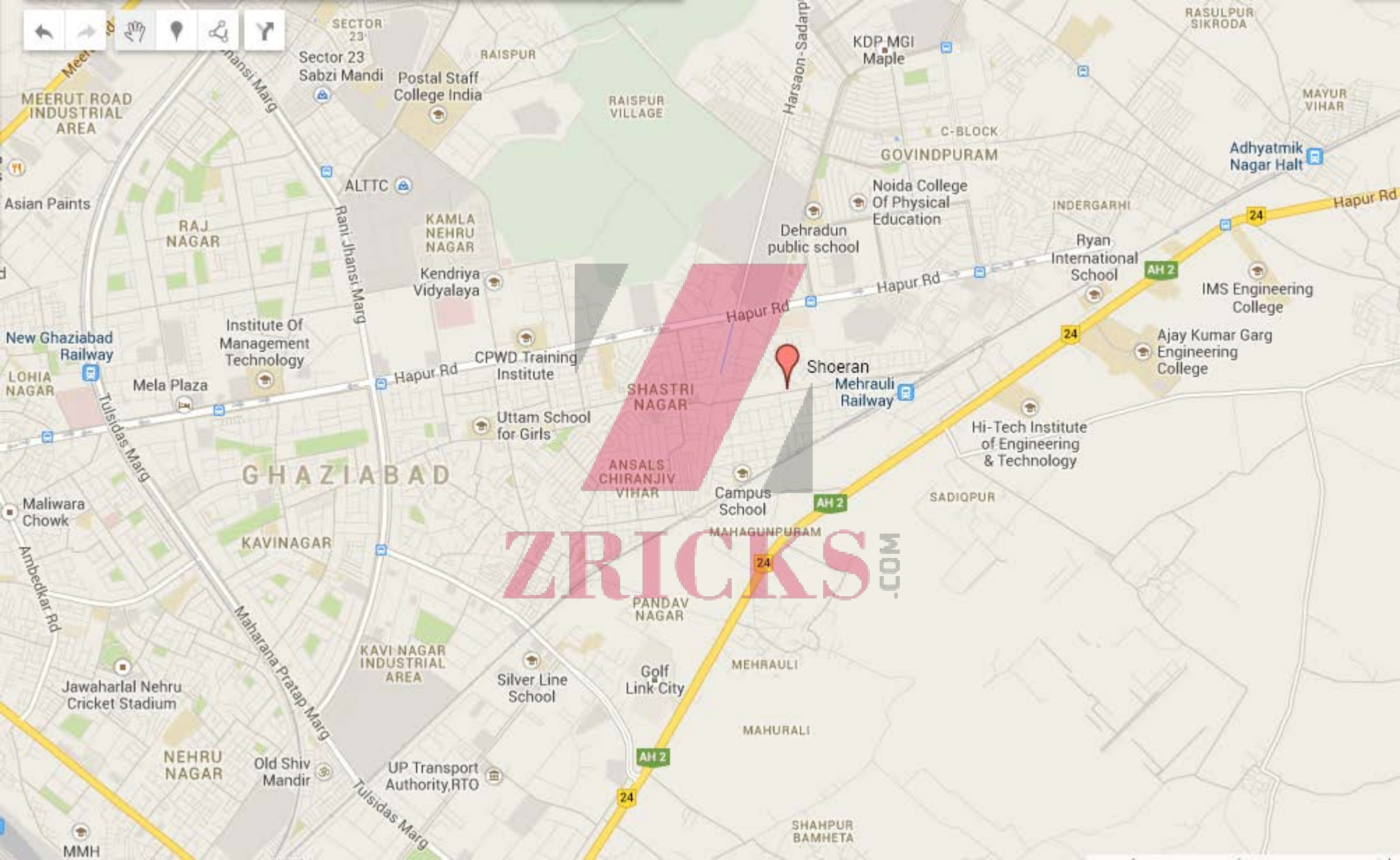
2 BHK +STUDY B1
SALE AREA:1335 SQFT(APPROX.)

3 BHK+SER. TYPE A1
SALE AREA:1680 SQFT(APPROX.)

3 BHK TYPE A2
SALE AREA:1520 SQFT (APPROX.)

3 BHK TYPE A3
SALE AREA:1520 SQFT(APPROX.)





MEERUT ROAD INDUSTRIAL AREA

Asian Paints

New Ghaziabad Railway

Maliwara Chowk

Jawaharlal Nehru Cricket Stadium

MMH

RAJ NAGAR

Institute Of Management Technology

GHAZIABAD

KAVINAGAR

NEHRU NAGAR

Old Shiv Mandir

Sector 23 Sabzi Mandi

ALTTTC

KAVI NAGAR INDUSTRIAL AREA

UP Transport Authority RTO

RAISPUR

RAISPUR VILLAGE

KAMLA NEHRU NAGAR

Kendriya Vidyalaya

CPWD Training Institute

Uttam School for Girls

Silver Line School

Golf Link City

24

SHASTRI NAGAR
ANSALS CHIRANJIV VIHAR

PANDAV NAGAR

Campus School

MAHAGUNPURAM

MEHRAULI

MAHURALI

SHAHPUR BAMBETA

KDP MGI Maple

Dehradun public school

Shoeran Mehrauli Railway

GOVINDPURAM

Noida College Of Physical Education

Hapur Rd

Hapur Rd

Hapur Rd

AH 2

24

24

AH 2

24

AH 2

24

AH 2

INDERGARHI

Ryan International School

Hi-Tech Institute of Engineering & Technology

Ajay Kumar Garg Engineering College

SADIQPUR

24

24

24

24

24

24

24

24

Adhyatmik Nagar Halt

IMS Engineering College

IMS Engineering College

IMS Engineering College

IMS Engineering College

IMS Engineering College

IMS Engineering College

IMS Engineering College

IMS Engineering College

IMS Engineering College

ZRICKS.COM

Construction Links Payment Plan

S. No.	Description	Rate	Other Charges
1	On Booking	10%	
2	Within 30 Days of Booking	20%	
3	On Casting Ground Floor Slab+50% Car Parking	5%	
4	On Casting 2 nd Floor Slab	7.5%	
5	On Casting 4 th Floor Slab	5%	
6	On Casting 6 th Floor Slab	7.5%	
7	On Casting 8 th Floor Slab+50% Car Parking	5%	
8	On Casting 10 th Floor Slab	7.5%	
9	On Casting 12 th Floor Slab	5%	
10	On Completion of Brick Work of respective floor	7.5%	
11	On Completion of Plaster of respective floor	5%	
12	On Completion of Flooring of respective floor	5%	
13	On Completion of Finishing of respective floor	5%	
14	At The Time of Possession	5%	IFMS

Special Payment Plan:

S. No.	Description	Rate	
1	At The Time of Booking	20%	
2	At The Time Offer of Possession + Car Parking	80%	IFMS

NOTE:- Price applicable for 1st fifteen booking.

* EEC	FREE (Inclusive in the Basic Price)
* FFC	FREE (Inclusive in the Basic Price)
* ADC	FREE (Inclusive in the Basic Price)
* PLC (All)	FREE (Inclusive in the Basic Price)
* Power Back-up 1KVA	FREE (Inclusive in the Basic Price)
* Open Car Parking	Rs. 75,000
* Additional Power Back-up	Rs. 15,000/- (Per KVA)
* IFMS	Rs. 20/- Sq. Ft.

Flat Sizes

ZRICKS.COM

TYPE	CATAGORIES	Area in Sq.ft
A-1	3 BHK + Ser.	1690
A-2	3 BHK	1520
A-3	3 BHK	1520
A-4	3 BHK	1520
B-1	2 BHK + Study	1335

SPECIFICATION

STRUCTURE

Earthquake Resistant RCC Framed Structure with Brick Partition Walls

FLOORING

Living / Dining	:	Vitrified tiles
Bedrooms	:	Vitrified tiles / Laminated wooden flooring
Toilets	:	Anti-skid ceramic tiles
Kitchen	:	Vitrified tiles
Verandah & Balcony	:	Anti-skid ceramic tiles
Common Staircase, Landing & Passage	:	Udaipur Green / Kota stone
Main Lift Lobby	:	Granite / Marble flooring

TOILET

Dado	:	Designer combination of Ceramic tiles dado up to door level
Wash basin	:	Of standard make
Fittings / Fixtures	:	Marble counter, White sanitary fixtures, CP fittings of standard make
Other fixtures	:	Mirror over wash basin towel rail / ring
Water supply	:	GI / CPVC pipes of reputed make

KITCHEN

Dado	:	Ceramic tiles dado up to 2'0" high above the working platform
Working top	:	Granite counter
Sink	:	Stainless steel sink with single bowl & drain board
Fittings	:	CP Fittings of reputed make
Water supply	:	GI / CPVC pipes of reputed make

JOINERY

Door frame	:	Well seasoned Wooden door frames
------------	---	----------------------------------

DOOR SHUTTERS

(i) Main Door	:	Teak wood veneered / laminated flush door
(ii) Bed Room / Kitchen / Toilets	:	Laminated flush doors
(iii) Mumty	:	Flush door painted
Window frame	:	UPVC / Powder coated glazed aluminum windows
Common staircase handrail	:	Designed railing

ELECTRICAL & PLUMBING

Electrical work	:	Copper wiring in concealed PVC conduits, sufficient light and power points with designer modular switches. One telephone point in drawing room and each bed room.
Plumbing work	:	G.I. / C.I. / CPVC. Pipes of standard quality. Provision for geyser points in all toilets. Provision for Aqua Guard point above counter.
Lifts	:	Modern elevators with genset back-up and tastefully done up interior
Genset	:	Genset back-up for essential services
Power back-up	:	1 KVA-per flat additional back up (at extra cost)
Fire fighting	:	Wet risers installed at every floor landing

INTERNAL FINISH

Walls	:	Oil bound distemper
Ceiling	:	White color distemper

EXTERNAL FINISH	:	Textured paint / Weather proof paint
-----------------	---	--------------------------------------

Note : Floor plans mentioned tentative and subject to change as per the statutory & service requirements. Builder / Architect reserve the right to add / delete any detail / specifications / features mentioned above. Picture representation shown in this folder are purely conceptual.