

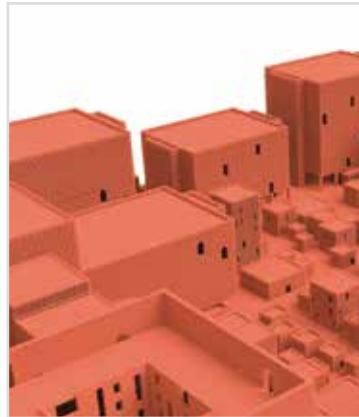
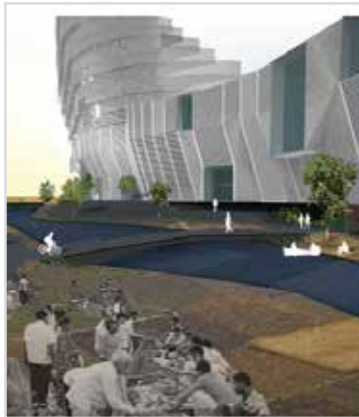


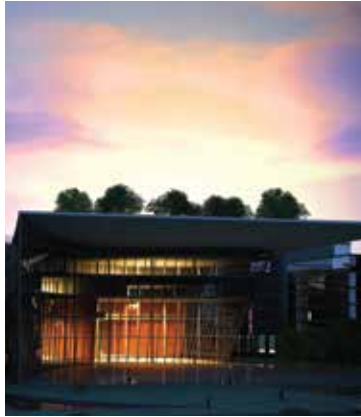
WORLD TRADE CENTER™ NOIDA

A VIRIDIANRED DEVELOPMENT

WTC ONE

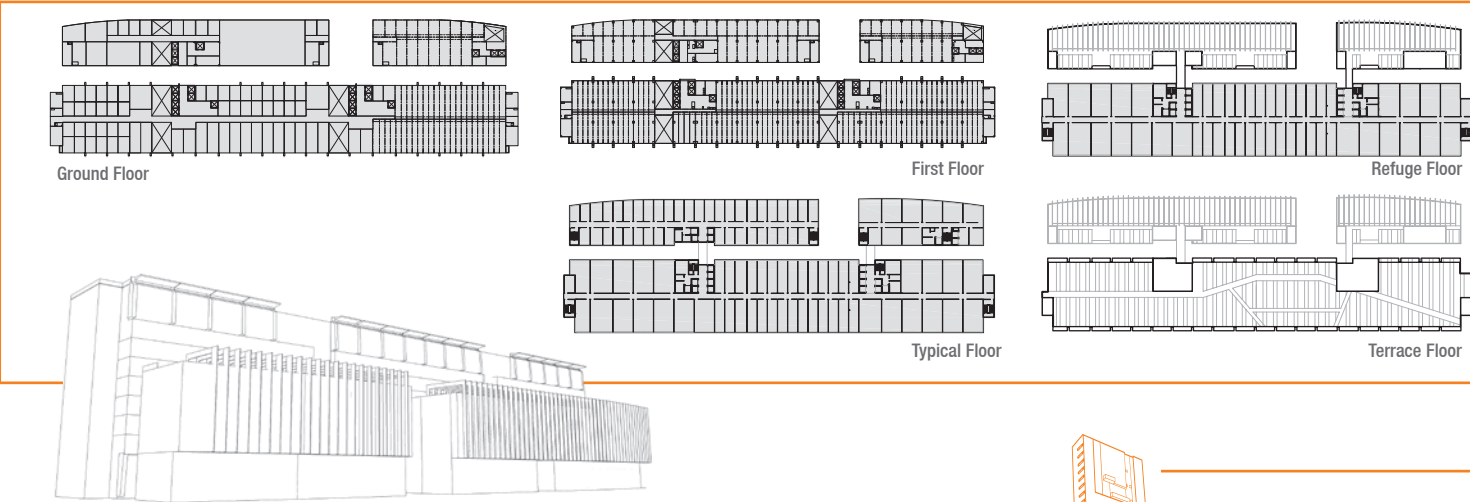






The World Trade Center, Noida has emerged from a rich mix of ideas generated from India's first and largest global architectural design competition in the commercial segment. A total of 713 registrations from 67 countries for the competition, resulting in 201 entries gives it the pedigree of a world citizen.





WTC ONE

The largest building in the WTC complex, 9 storeyed, covers an area of 8.5 L sqft., Comprising of an anchor block at its helm, the building consists of efficient and large floor plates suitable for MNCs, global majors and large trade organizations.

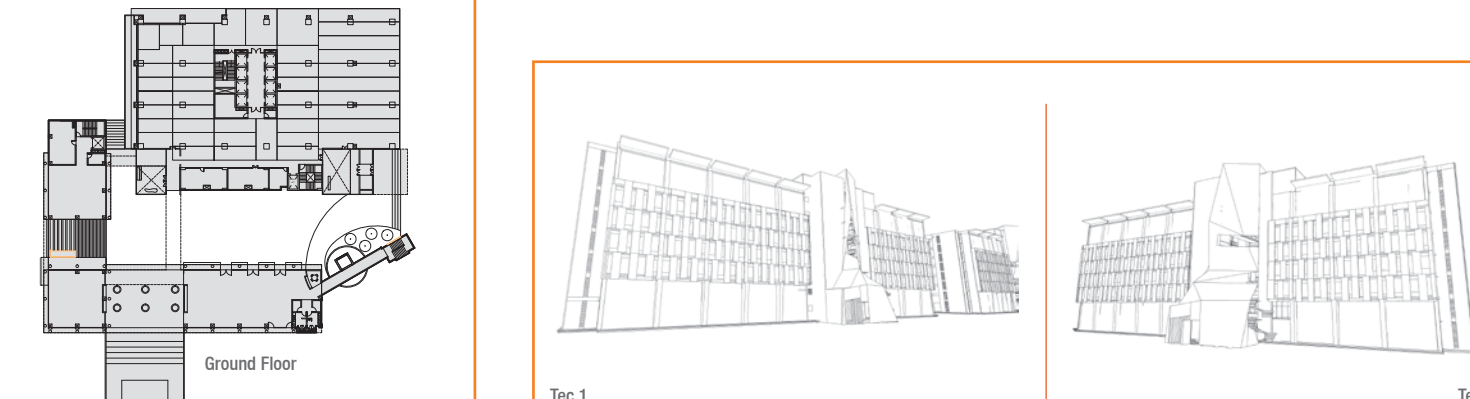
- Anchor Block (G+5)
- Multitenant Offices (G+5) & (G+8)
- Global Offices
- Retail + WTC Studios



WTC SIGNATURE

It is a tall tower of around 3.5 L sqft., containing most premium offices and business facilities on its 19 storeys. Symbolizing power, prosperity and prestige the tower arises from India's largest global design competition.

- Grand Lobby – WTC Club/ Amenities at Ground & First Floor
- Seminar & Conferences
- Business Centre
- Premium IT & ITES Offices in upper Floors



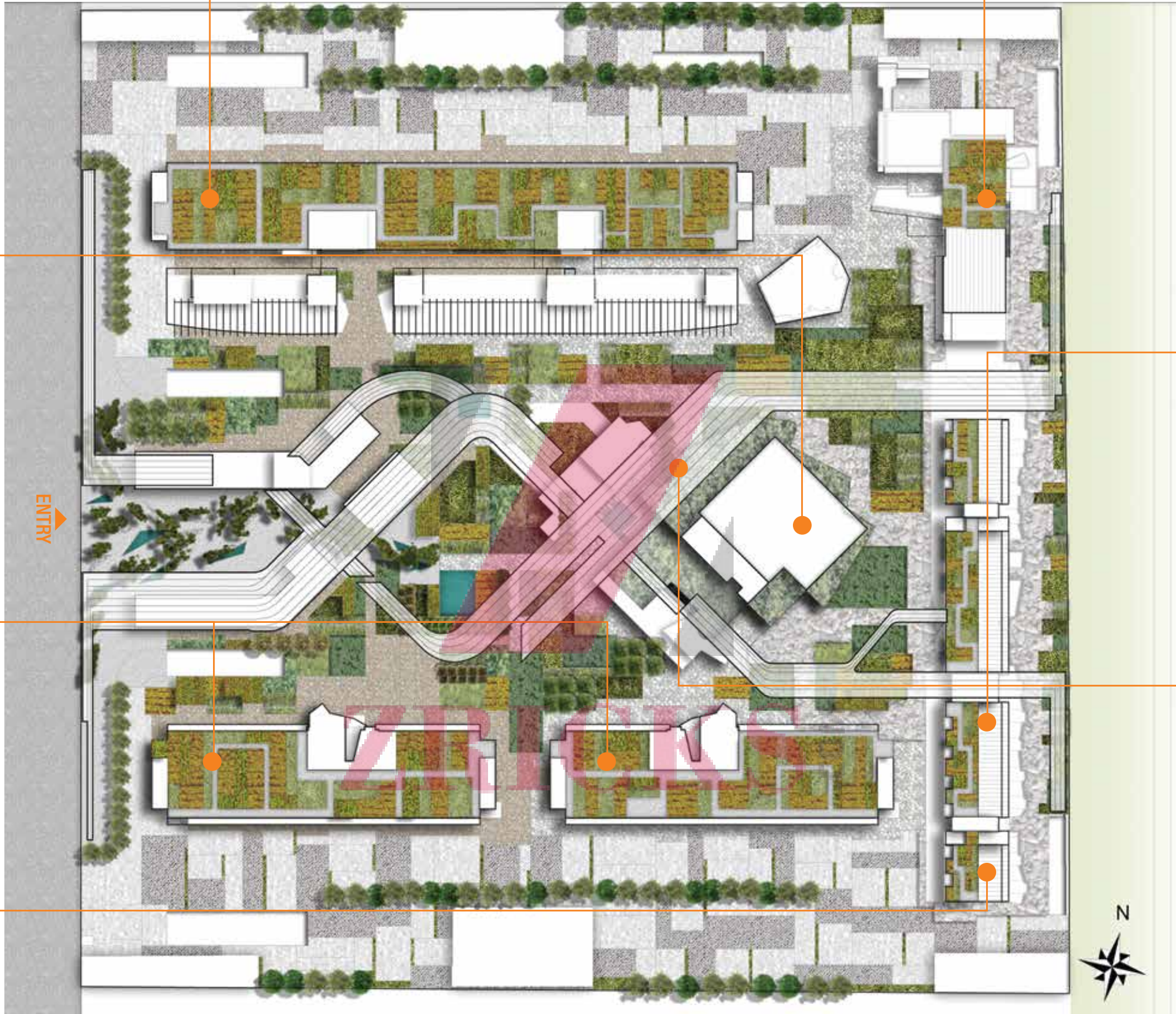
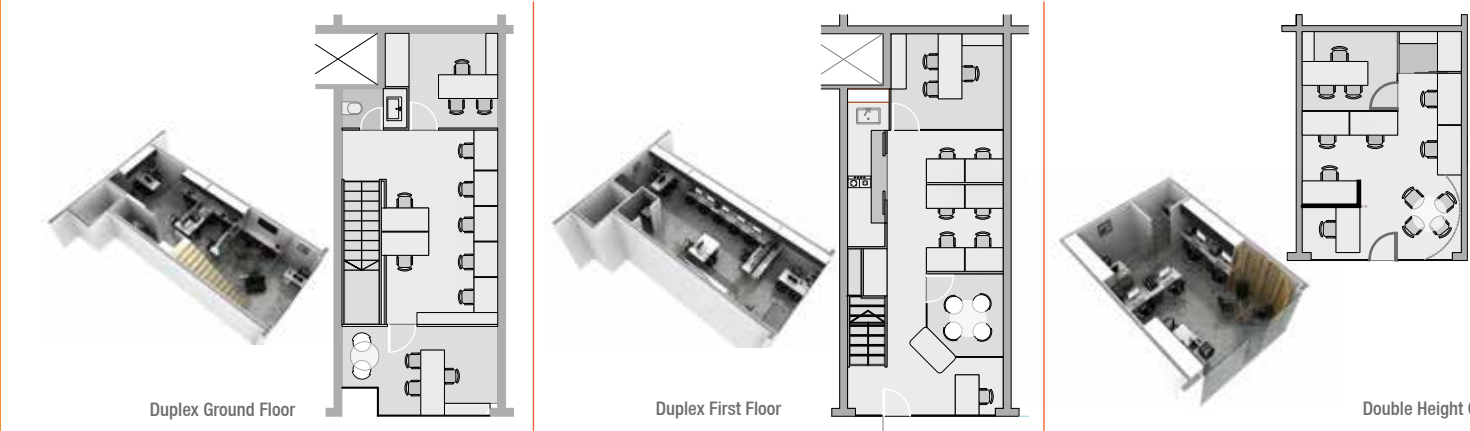
TEC 1 and TEC 2 (Ready for possession)

The twin towers are 8 storey high, covering an area of 2.7 L sqft. each, consisting of flexible and efficient work spaces for large organizations on the path of growth; the towers create their unique presence by the extraordinary aesthetics of its façade, and the spatial quality of its bio atrium.

- Multi Tenant Office
- Serviced Offices
- Retail

PORTFOLIO SPACES

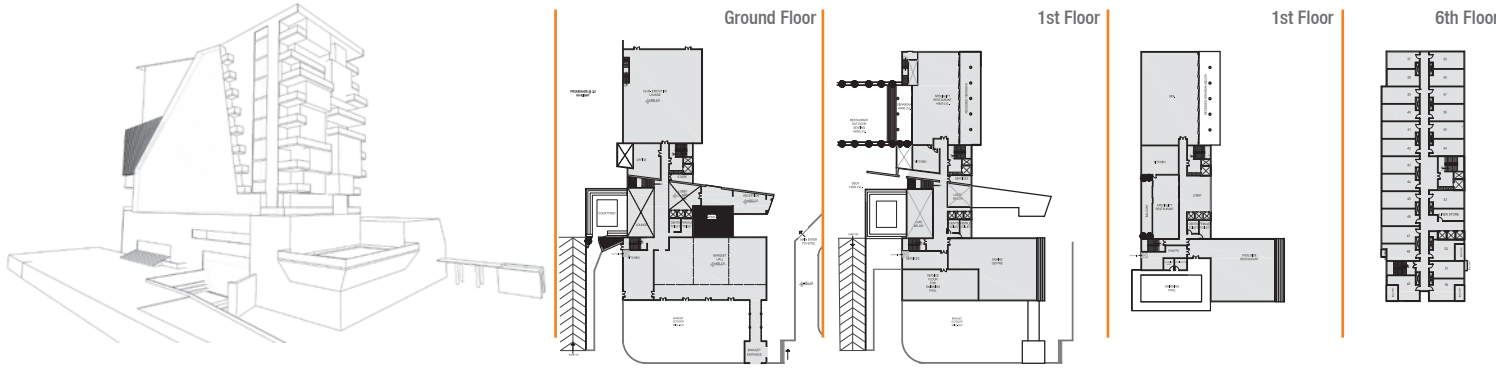
Modern duplex and double height offices, with an entrance from the viewing deck at the first floor. Flexible and spacious, these offices serve as an ideal workplace for design studios, Private Equity Firms, CAs and other such businesses.



HOTEL

At south corner of the WTC Complex is a Hotel, managed by a renowned international hospitality operator. It offers excellent facilities in tune with smart and luxurious stay options.

- 165 rooms
- Club, Specialty Restaurant, Fine Dining
- Gym, Spa, Pool
- Banqueting
- Lobby/ Reception



RIVERSIDE RESIDENCES

Provide a key mixed use function of live work spaces. Modern duplex and double height offices, with an entrance from the viewing deck at the first floor. Flexible and spacious, these offices serve as an ideal workplace for design studios, Private Equity Firms, CAs and other such businesses. Serviced Apartments are present from 2nd to 6th Floor & Hip Lofts at 7th & 8th Floor with dedicated Club & Infinity Pool at 8th Floor.



ARMATURE

The Armature is a mnemonic green thread that is the DNA of the iconic metamorphosis of the WTC complex. If the site is the city, the thread is its museum, a repository of data that both allows and informs the transformation that makes it iconic at each level. In the city the landscape is of memory, while the mnemonic thread is both the garden within the fields, impacted by the minutest change in environment, as well as the very DNA that eventually mutates and becomes the future.

PLATE OF LIFE

WTC Noida propounds a holistic 'Work + Life' balance, through its 'Plate of Life'. This plate consists of intertwined activities that support the needs of the mundane to the desire of souls, in the form of built spaces for shopping, browsing, absorbing & re-invigorating

- CONNECT: Audi-Seminars-Exhibitions
- COMMERCIAL: Shopping-Food Courts-Health & Wellness
- CULTURE: Galleries-Centre for Innovation



FACT SHEET

SPACE

MASTERPLANNING

| | | |
|---------------------------|--|--|
| • AREAS | The complex is spread over 21 acres with 18 lac sqft of work space areas | Built to hold 20000 people |
| • SITE MASSING AND LAYOUT | 12 distinct building blocks provide integrated live-work-play functions | A prestigious 100 m high tower |
| • CIRCULATION | Well planned access at all levels, channels through 20 building cores and integrally connected for quick and efficient movements | Total 55 no. lifts, with speed of fastest ones at 2.5m/s |

INDOOR & COMMON AREAS

| | | |
|----------------------|---|-------------------------------|
| • PARKING | Total 3000 cars parking, of which 500 are at surface level. Parking spread over 24 acres in 2 basements, with higher height for future additional parking | Extendable upto 4200 nos. |
| • PEDESTRIAN NETWORK | Pedestrian focused circulation design ensuring uninterrupted flow | Dedicated 1.5 kms of walkways |
| • ATRIUMS | Grand experience by Atrium framed entry for all large buildings, a total of 8 nos | Unique bio-atriums |
| • BREAKOUT AREAS | Richly interspersed balconies, verandahs, terraces & sky courts, add diversity and provide a sense of relief from cold modern indoors | |

OUTDOORS

| | | |
|----------------------|--|---|
| • LANDSCAPE | A world class environment created out of a blend of the agrarian, the river and memories to impart a unique place of character to the entire complex | Green Area of 35% equivalent to 7 acres |
| • CONGREGATION AREAS | To promote outdoor activity and gatherings, designated areas for events and performances add to a vivid user experience of the complex | Multiple spill-outs, plazas, lawns and courts can host >1500 people |
| • SHOPPING | Linear unbroken building lines give direct access to retail and institutional spaces | Great place for street shopping |
| • CULTURAL | A magnet for people is a natural hub for art displays and performances | Infuse high cultural quotient |

STRUCTURE

SHELL

| | | |
|-----------------------|---|--|
| • SYSTEMS | A hybrid system of foundations consisting of piles and rafts provides a robust and built-to-last base for the entire system | Designed for Zone IV earthquake detailing |
| • STRUCTURAL ELEMENTS | Large spans, optimised structural grid & framed structural system. On site batching plant to maintain standards of concrete production. Strict testing of materials, steel and concrete mix supplemented by 3rd party testing to give the greatest level of quality assurance | 15000 MT of Steel (equiv. to 2 Eiffel Towers) and 1.6 Lac cum concrete (equiv. to 2 Empire State buildings) will be used |
| • MASONRY | Use of advanced cellular lightweight concrete blocks for walls | |

ENVELOPE

| | | |
|--------------------|---|--|
| • FAÇADE SYSTEM | Integrated design engineering approach is the highlight where both unitized and semi unitized type systems are used based on particular building requirements | Energy optimized and unique memorable imagery |
| • GLAZING | Use of High performance glasses specified as per energy simulation analysis | |
| • FASCIA MATERIALS | Innovative use of earthy, textured and terracotta based materials | |
| • SHADING | The entire complex is oriented to minimize solar gain. Further, various measures to add shading by the use of projections, recesses and fins add a richness to the façade while creating day-lit and glare free workspaces inside | Large trellised area provides semi-covered terrace functional and a visual delight |
| • ROOFS | Green in true sense of the word, the roofs are devised out of a planting system that ensures year round vegetation, while also providing insulation and a joyful usable space | 3.5 acre of terrace gardens |

SUSTAINABILITY

ADEQUACY

| | | |
|-----------|--|--|
| • ENERGY | Energy conscious planning ensures lower requirement for lighting. While reducing operational demand, adequacy is ensured by power backup that is provided on modular basis is provided | 30% lower demands Total 16 MW DG backup |
| • WATER | Rainwater harvesting and a triple run water cycle, ensures every drop counts | Zero discharge complex |
| • COMFORT | High efficiency chillers and advanced controls ensure indoor comfort. A mix of strategies-such as by use of solar chimney & mistifiers provide comfortable outdoors & common areas | |

ACCESS & CONTROLS

| | | |
|------------|--|-----------------------------|
| • PHYSICAL | Carefully planned to secure, survey, impede and detect unwanted intrusions | |
| • WIRED | Integrated solution for all voice, data and internet requirements | |
| • SAFETY | Highest standards of provision for Fire detection and safety | 6.6 lac litre of Fire tanks |

APPROPRIATENESS

| | | |
|---------------------------|---|---|
| • ARMATURE | A unique and cutting edge solution to enhance the utilization of outdoor urban spaces | Shades, Cools, lights & connects |
| • RENEWABLE | Harnessing the power of sun and wind | |
| • RESPONSIBLE DEVELOPMENT | Based on principles that promote consumption in a manner that stays aware, minimises waste, and promotes recycling. An environmentally responsible and ecologically conscious way of building | Local material and flyash used Promote flora & fauna |



WORLD TRADE CENTER™
NOIDA

A VIRIDIANRED DEVELOPMENT

Corporate & Sales Office: GF-09, Plaza M6, District Centre, Jasola, New Delhi - 110 025

Site Office: Plot No. TZ-13A, Sector Tech Zone, Greater Noida Industrial Development Area, District Gautam Budh Nagar (U.P.)

T: 1800-1-20-40-80 | E: info@wtcnoida.org | W: www.wtcnoida.org

Disclaimer: World Trade Center, WTC and its map, design, logo presented herein are the registered trademarks of the "World Trade Center Association, Inc, New York (WTCA)". Spire Techpark Pvt. Ltd. - a group company of Viridian, having its office at GF - 09, Plaza M-06, District Centre, Jasola, New Delhi-110025 has entered into a License Agreement with WTCA to use the name "World Trade Center Noida", "WTC Noida" alongwith the map, design and logo of WTCA. The content published / printed herein are not any sort of invitation, legal offer or promise from the company. No claim of accuracy / authenticity of the contents and its applicability to the project are made / guaranteed by the company. All representations / presentations made herein are for illustrative / indicative purpose and not claimed to be exhaustive or complete. All images are artistic impressions. Layout of the Project, Map / Design and shape of the building, nomenclatures of the Project, Blocks, Towers are tentatively mentioned herein and are subject to change. Please refer to the booking application and agreement issued by the company for detailed terms & conditions applicable to the project. 1 sq. ft. = 0.093 sq. mtr.



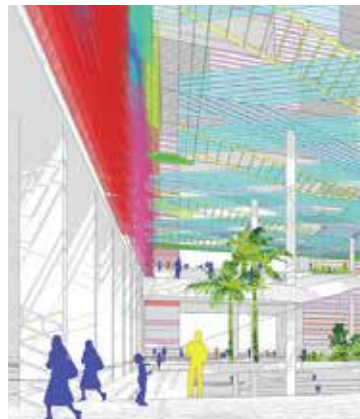
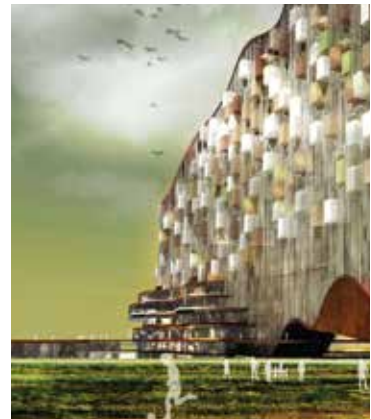
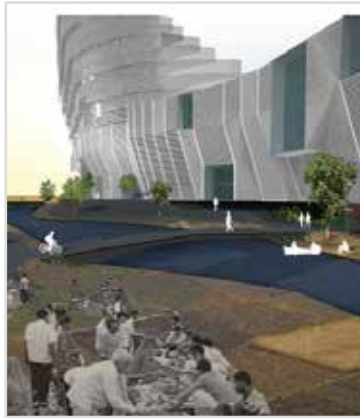
WORLD TRADE CENTER™ NOIDA

A VIRIDIANRED DEVELOPMENT

WTC
SIGNATURE

ZRICKS.COM







The World Trade Center, Noida has emerged from a rich mix of ideas generated from India's first and largest global architectural design competition in the commercial segment. A total of 713 registrations from 67 countries for the competition, resulting in 201 entries gives it the pedigree of a world citizen.



Iconic tall tower on Yamuna Expressway

A beacon of pride that stands tall on the Expressway. WTC Signature is the icon of prosperity visible from afar. It symbolises power, prosperity and prestige. The tower arises from a fertile bed of ideas emerging from India's largest global design competition.

- Grand lobby
- Seminar and conferences
- Business center
- Premium offices



360 degree sunset views of the Yamuna flood plain

Established on the ecological nerve-point of the Yamuna flood plain, the tower allows access to uninhibited vistas that afford a more serene and productive work environment.

Exclusive WTC Club experience

The WTC Club, all over the world, is the centerpoint for the topmost echelons of networking. It provides access to the best and the brightest minds in business and privileged access to WTC clubs globally.

- Dedicated relationship manager
- Preferred access to all calendar events
- Upgrades and discounts on business transactions*
- Concierge services
- Fine dining, terrace bar and sky deck

Helipad access

As the axis of international business, World Trade Center, Noida, will feature some of the most pivotal meetings and conferences for the delegates who don't always have time to negotiate through the city traffic. The Helipad atop WTC Signature allows quick, direct and efficient access.

Privileged access to Venture Accelerator Services at V@C

In line with enabling businesses big and small, the World Trade Center, Noida offers V@C services that include Entrepreneurship Enablement, Capital, Market Information, Research and Business Center facilities.



WTC enabled business and convention centre

The World Trade Center, Noida, will serve as the fulcrum of trade in the region. Its convention center services, seminars, conference facilities and trade events, enabled by the World Trade Center Association, will allow local businesses to interact on a global arena through cutting edge facilities and conveniences.

Excellent Infrastructure

Mainstream Green principles ensure sustainable solutions with the same level of robustness in operation.

Integrated Facilities

VAC, Exhibition Spaces and Seminar Rooms

Efficient Modular Floor Plates

Starting from 450 sq ft to 24,000 sq ft

Built to Global Standard

- Built to U.S. office parameters
- 4.6m (15') floor to floor height for service space redundancy
- Modular office bays in multiples of 450 sq.ft. for maximum flexibility
- High speed elevators
- Modular service tap-offs and smart metering

RIVERSIDE RESIDENCES

Provide a key mixed use function of live work spaces. Modern duplex and double height offices, with an entrance from the viewing deck at the first floor. Flexible and spacious, these offices serve as an ideal workplace for design studios, Private Equity Firms, CAs and other such businesses. Serviced Apartments are present from 2nd to 6th Floor & Hip Lofts at 7th & 8th Floor with dedicated Club & Infinity Pool at 8th Floor.

ARMATURE

The Armature is a mnemonic green thread that is the DNA of the iconic metamorphosis of the WTC complex. If the site is the city, the thread is its museum, a repository of data that both allows and informs the transformation that makes it iconic at each level. In the city the landscape is of memory, while the mnemonic thread is both the garden within the fields, impacted by the minutest change in environment, as well as the very DNA that eventually mutates and becomes the future.

HOTEL

At south corner of the WTC Complex is a Hotel, managed by a renowned international hospitality operator. It offers excellent facilities in tune with smart and luxurious stay options.

- 165 rooms
- Club, Specialty Restaurant, Fine Dining
- Gym, Spa, Pool
- Banqueting
- Lobby/ Reception

WTC SIGNATURE

It is a tall tower of around 3.5 L sqft., containing most premium offices and business facilities on its 19 storeys. Symbolizing power, prosperity and prestige the tower arises from India's largest global design competition.

- Grand Lobby – WTC Club/ Amenities at Ground & First Floor
- Seminar & Conferences
- Business Centre
- Premium IT & ITES Offices in upper Floors

PLAZA

TEC 1 and TEC 2

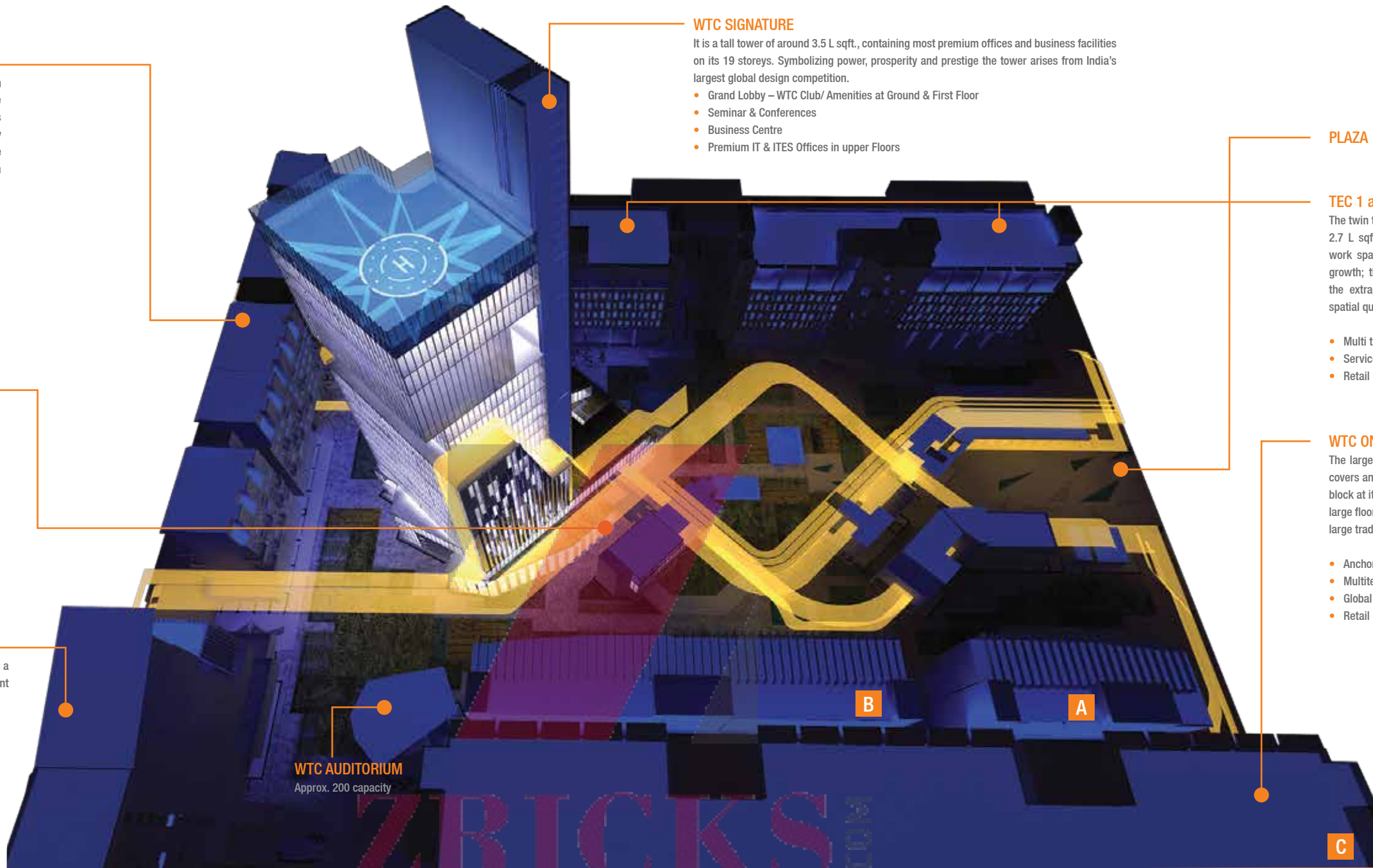
The twin towers are 8 storey high, covering an area of 2.7 L sqft. each, consisting of flexible and efficient work spaces for large organizations on the path of growth; the towers create their unique presence by the extraordinary aesthetics of its façade, and the spatial quality of its bio atrium.

- Multi tenant office
- Serviced offices
- Retail

WTC ONE

The largest building in the WTC complex, 9 storeyed, covers an area of 8.5 L sqft.,. Comprising of an anchor block at its helm, the building consists of efficient and large floor plates suitable for MNCs, global majors and large trade organizations.

- Anchor block (G+5)
- Multitenant offices (G+5) & (G+8)
- Global Offices
- Retail + WTC studios



The System of Fractals

Treats each individual element within the campus as part of a greater whole. The entire site is treated like a Plate that contains layers of Work and Life finding meaning in coexistence to deliver a harmonious environment. Like a pivot for the entire development, WTC Signature works in conjunction with the functions and features, delivering a hybrid eco-system.

Plate of Life

The WTC at Noida propounds a holistic 'Work + Life' balance, through its 'Plate of Life'. This plate consists of intertwined activities that support the needs of the mundane to the desire of souls, in the form of built spaces for shopping, browsing, absorbing & re-invigorating

- CONNECT: Audi-Seminars-Exhibitions
- COMMERCIAL: Shopping-Food Courts-Health & Wellness
- CULTURE: Galleries-Centre for Innovation



Modular Workspaces



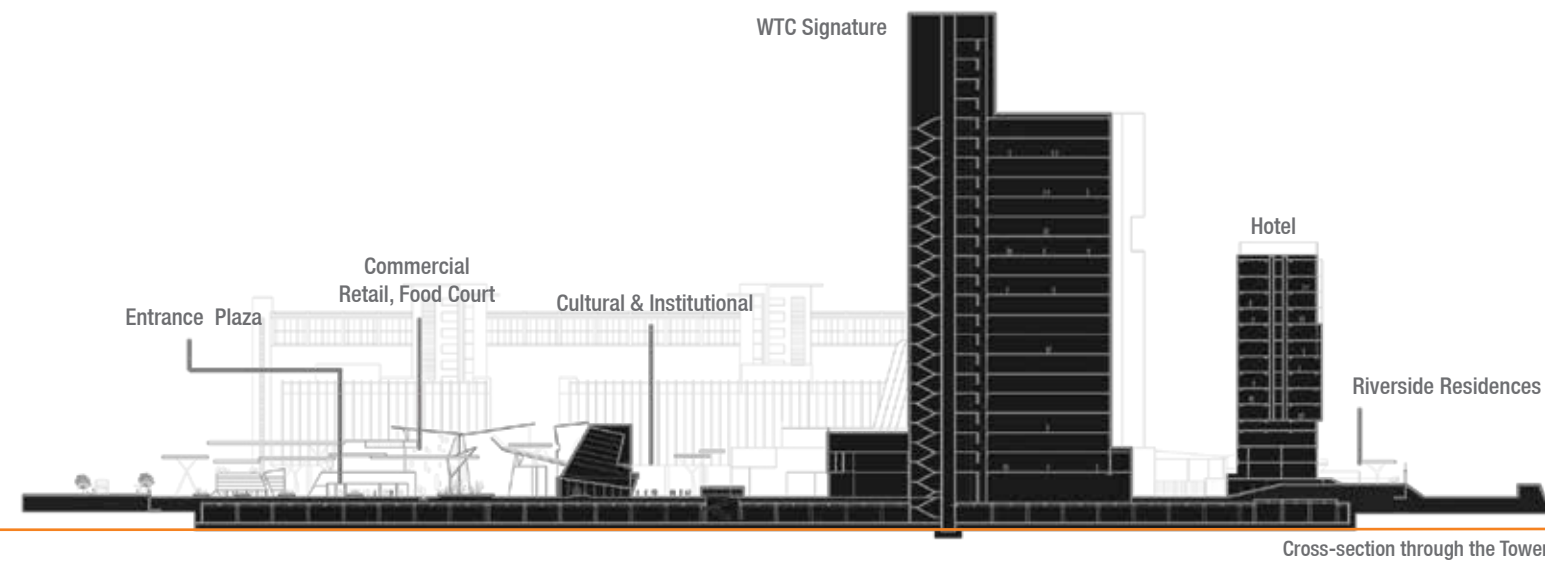
Zone of Ideas



Eco Systemic Hybrid



Plate of Life



Cross-section through the Tower

FACT SHEET

SPACE

MASTERPLANNING

| | | |
|---------------------------|---|---|
| • AREAS | The tower has an approx 3.5 lac sq ft of work space area | Built to hold 3500 people |
| • SITE MASSING AND LAYOUT | Acting as the fulcrum of the development with integrated live-work-play functions on the ground plate | A prestigious tower with helipad |
| • CIRCULATION | Well-planned access at all levels through high speed elevators for quick and efficient movements | Total 5 no. lifts, with speed of 2.5m/s |

INDOOR & COMMON AREAS

| | | |
|---------------|--|---|
| • OFFICE AREA | Large floor plates with modular office arrangement. Higher floor to ceiling height gives better flexibility for the IT-enabled offices | Provision for under- floor cabling and services |
| • ATRIUMS | Grand entrance experience with Atriums on two sides of the buildings | 10 metres ceiling height of atrium |
| • TERRACES | Richly interspersed landscaped terraces & sky courts add diversity to utilizable space, providing breakout areas from the cold interiors | Terraces at various levels, provide spatial relief, and serve as refuge in case of fire |
| • PARKING | Adequate parking as part of the 18 acre single-level basement | Higher height for extendable parking. |

FACILITIES

| | | |
|--------------------|---|--|
| • BUSINESS CENTRE | WTC enabled world class business centre | |
| • EXHIBITION AREA | Large double height space on the ground floor can be utilized for exhibitions, product launches and congregation events | 6m Double height of ground floor areas |
| • CONFERENCE | State-of-the-art facilities for seminars and conferences. Auditorium with 200 seater capacity within the complex | |
| • OBSERVATION DECK | Unobstructed view of the river, flood plain and development from office spaces and higher heights | Viewing deck on the top-most floor |
| • PLATE OF LIFE | A host of food, cultural, shopping and wellness choices within the complex | A vibrant work environment |

STRUCTURE

SHELL

| | | |
|-----------------------|---|---|
| • SYSTEMS | Framed system and shear core atop pile foundations provides a robust framework | Designed for Zone IV earthquake detailing |
| • STRUCTURAL ELEMENTS | Onsite batching plant to maintain standards of concrete production. Strict testing of materials, steel and concrete mix supplemented by 3rd party testing to give the greatest level of quality assurance | Approximately 3000 MT of Steel and 30,000 cum concrete will be used |
| • MASONRY | Use of advanced cellular lightweight concrete blocks for walls | |

ENVELOPE

| | | |
|-----------------|---|---|
| • FAÇADE SYSTEM | Semi-unitized/unitized type structural glazing system is used, along with cladding for lower and core areas | Energy optimized and unique memorable imagery |
| • ENVELOPE | Energy Appropriate glass that is high performance and colour tinted. Earthy and textured paints and cladding materials used for non glazed surfaces | Recesses and Shading devices add fineness to the façade detail |
| • ROOFS | Roofs are designed as utilizable spaces, and are landscaped with vegetation and tiles | Terracing layers carry thermal insulation and water proofing under the roof |

SUSTAINABILITY

ADEQUACY

| | | |
|-----------|---|------------------------|
| • ENERGY | Efficient and Practical planning ensures that the functional, safety and comfort requirements for users are met adequately. While reducing operational costs, adequate power backup on modular basis is provided. | |
| • WATER | Rainwater harvesting and double run water cycle, ensures every drop counts | Zero discharge complex |
| • COMFORT | High efficiency chillers and advanced controls ensure indoor comfort. A mix of active and passive strategies provide for a comfortable workspace all year round. | |

ACCESS & CONTROLS

| | | |
|------------|---|--|
| • PHYSICAL | Carefully planned to secure, survey impede and detect unwanted intrusions | Layered security with various levels of access |
| • WIRED | Integrated solution for all voice, data and internet requirements | High speed data connection |
| • SAFETY | Integrated Automatic Fire Alarm and Response system that would ensure safety for all occupants irrespective of the source and extent of the emergency situation | |

APPROPRIATENESS

| | | |
|---------------------------|--|---|
| • ARMATURE | A unique and cutting edge solution to enhance the utilization of outdoor urban spaces | Integrated to the façade of the Tower |
| • RENEWABLE | Harnessing the power of sun and wind | |
| • RESPONSIBLE DEVELOPMENT | Based on principles that promote consumption that reduces waste, and promotes recycling. An environmentally responsible and ecologically conscious way of building | Local material and flyash used. Promotes flora & fauna. |



WORLD TRADE CENTER™ NOIDA

A VIRIDIANRED DEVELOPMENT

Corporate & Sales Office: GF-09, Plaza M6, District Centre, Jasola, New Delhi - 110 025

Site Office: Plot No. TZ-13A, Sector Tech Zone, Greater Noida Industrial Development Area, District Gautam Budh Nagar (U.P.)

T: 1800-1-20-40-80 | E: info@wtcnoida.org | W: www.wtcnoida.org

Disclaimer: World Trade Center, WTC and its map, design, logo presented herein are the registered trademarks of the 'World Trade Center Association, Inc, New York (WTCA). Spire Techpark Pvt. Ltd. - a group company of Viridian, having its office at GF - 09, Plaza M-06, District Centre, Jasola, New Delhi-110025 has entered into a License Agreement with WTCA to use the name 'World Trade Center Noida', 'WTC Noida' alongwith the map, design and logo of WTCA. The content published / printed herein are not any sort of invitation, legal offer or promise from the company. No claim of accuracy / authenticity of the contents and its applicability to the project are made / guaranteed by the company. All representations / presentations made herein are for illustrative / indicative purpose and not claimed to be exhaustive or complete. All images are artistic impressions. Layout of the Project, Map / Design and shape of the building, nomenclatures of the Project, Blocks, Towers are tentatively mentioned herein and are subject to change. Please refer to the booking application and agreement issued by the company for detailed terms & conditions applicable to the project. 1 sq. ft. = 0.093 sq. mtr.