



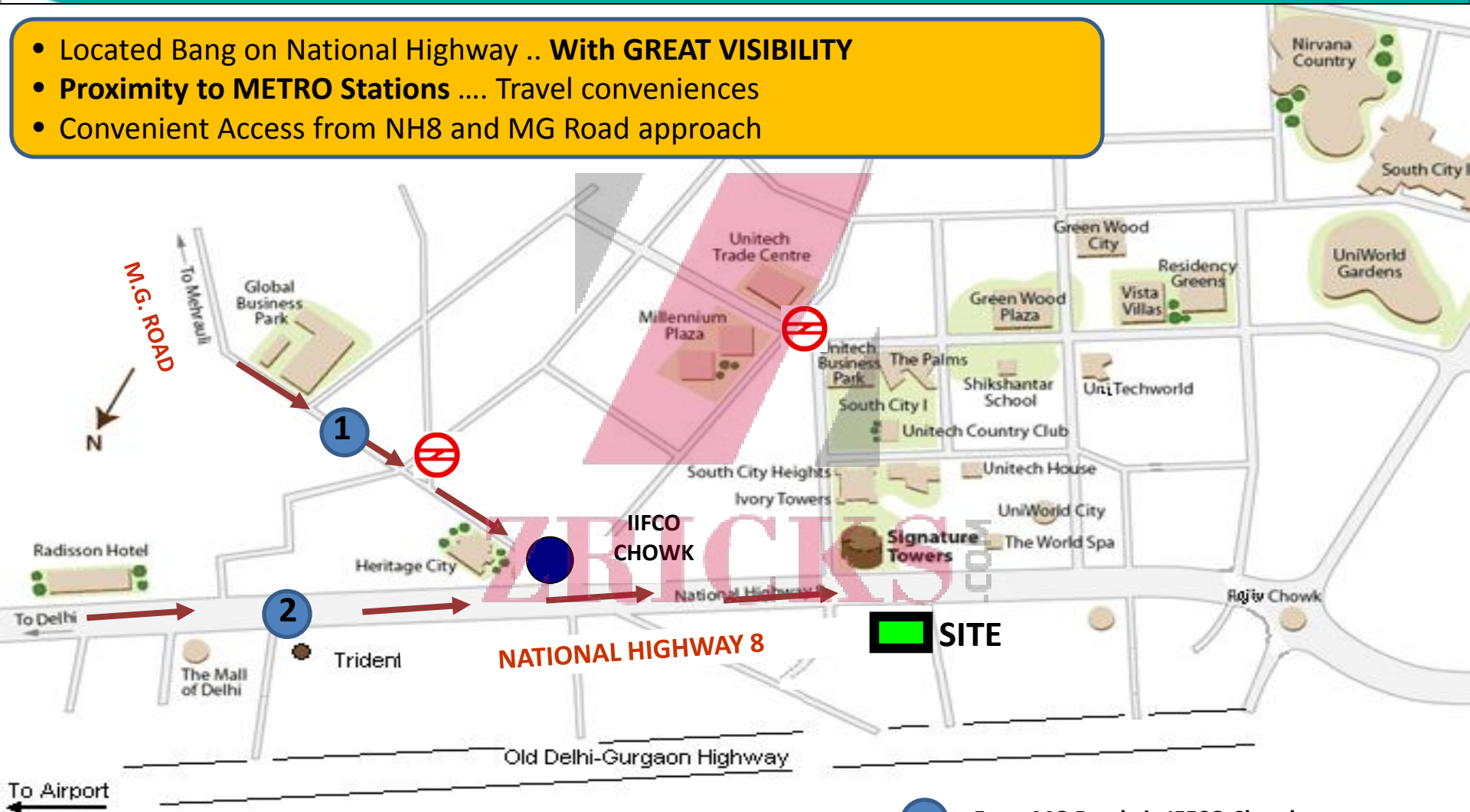
unitech

Building Relationships

ZRICKS.COM

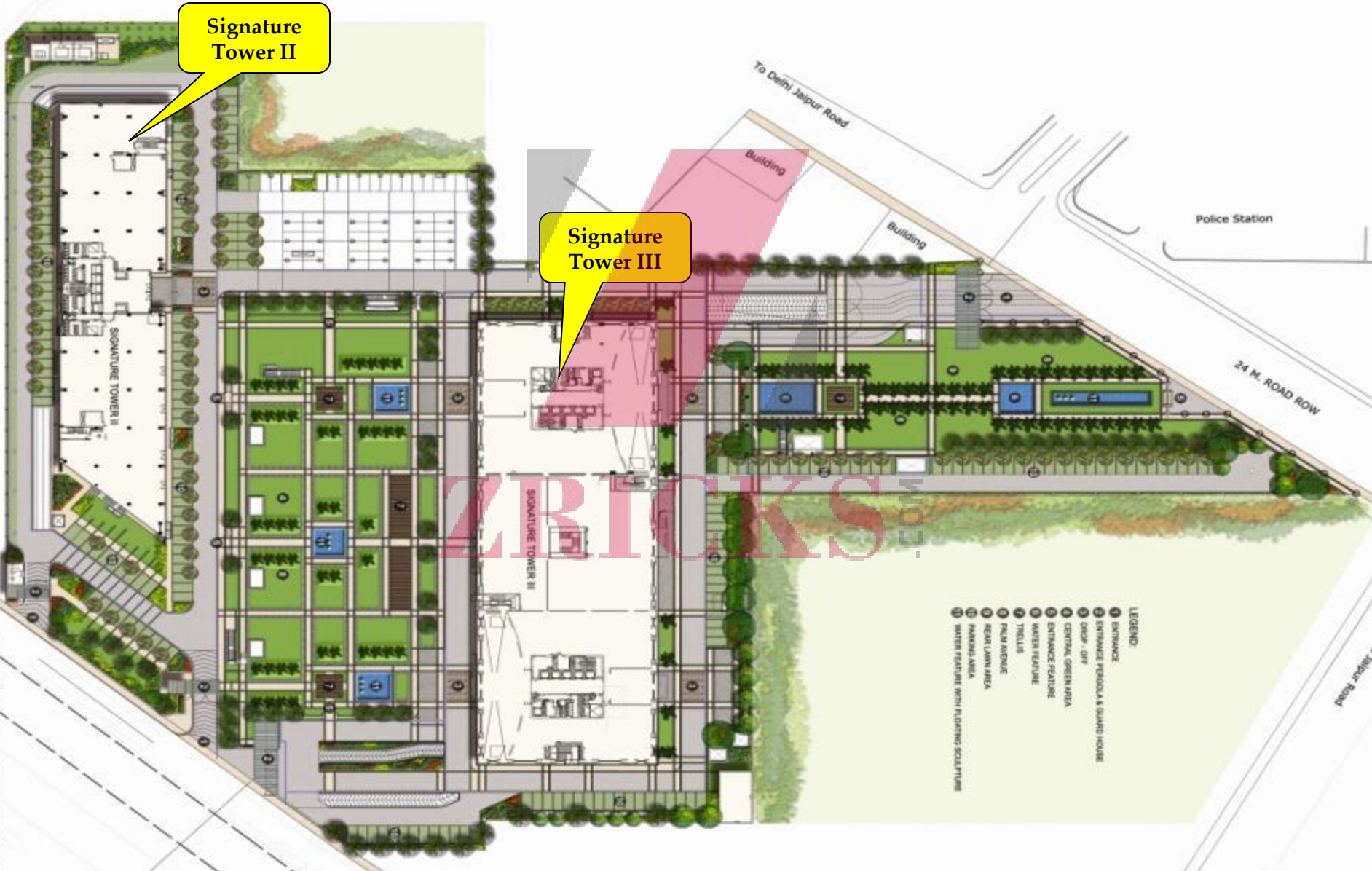
LOCATION MAP

- Located Bang on National Highway .. **With GREAT VISIBILITY**
- **Proximity to METRO Stations** Travel conveniences
- Convenient Access from NH8 and MG Road approach



- 1 From MG Road via IIFCO Chowk
- 2 Direct from National Highway

SITE PLAN – COMPLEX VIEW



Signature Tower II

Signature Tower III

- LEGEND:
- 1 ENTRANCE
 - 2 ENTRANCE PERSONAL GUARD HOUSE
 - 3 OFFICE - OFF
 - 4 CENTRAL GREEN AREA
 - 5 ENTRANCE FEATURE
 - 6 WATER FEATURE
 - 7 TRELLIS
 - 8 PALM AVENUE
 - 9 REAR LAWN AREA
 - 10 PARKING AREA
 - 11 WATER FEATURE WITH FLOWING SCULPTURE

LANDSCAPE LAYOUT PLAN ARCHITECT: RIHABO EGYPT, EDITOR: LAMAR ARCHITECTS, DESIGN ACCORD CONSULTANTS, 18 AUGUST '12, SIGNATURE TOWER II & III, GURGAON

ENTRANCE VIEW

unitech



PERSPECTIVE – SIGNATURE III



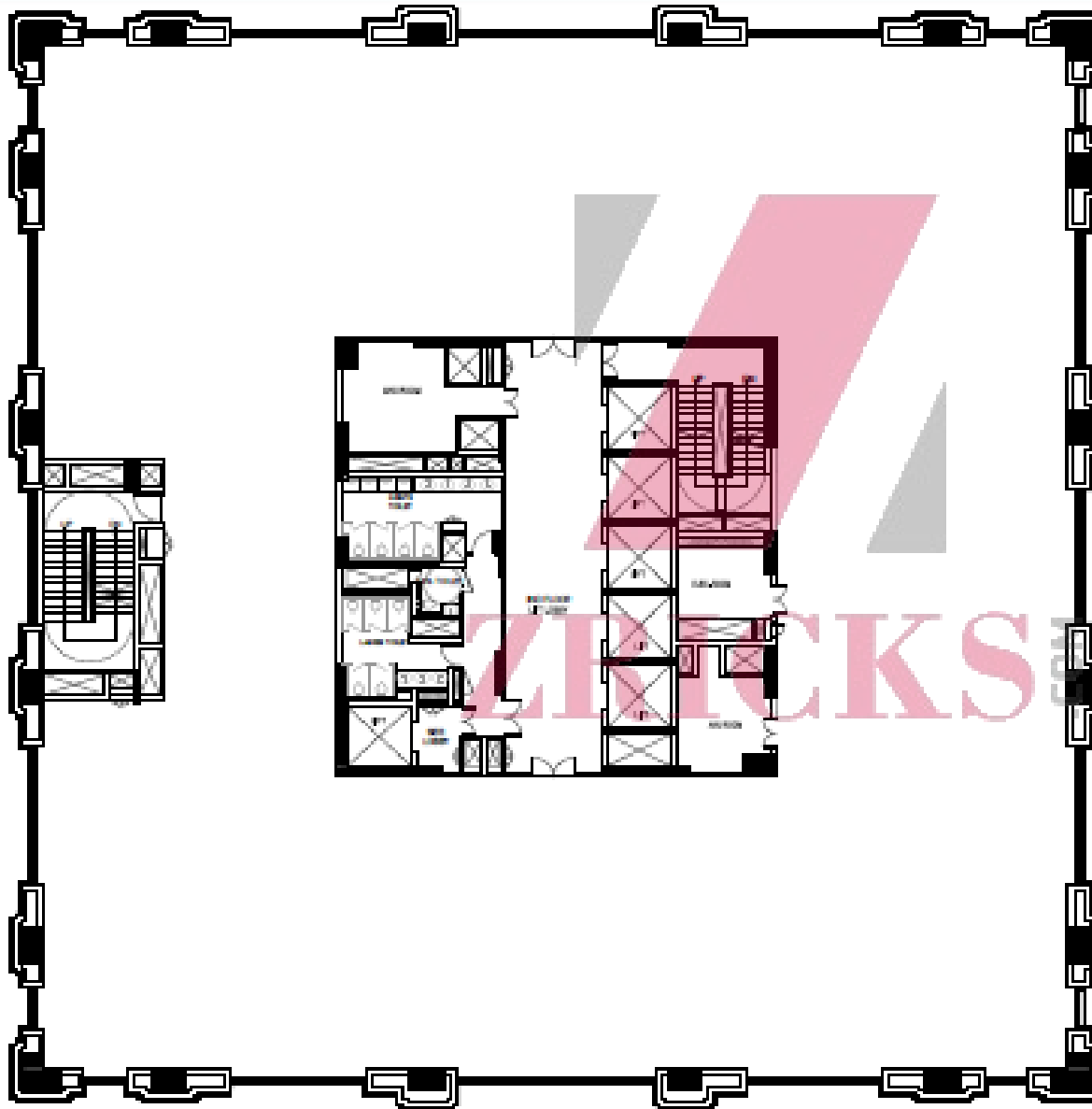
Stand Alone Building (G+11)
Approx. 3,12,000 sq ft

Stand Alone Building (G+11)
Approx. 3,15,000 sq ft

ZBICKS.COM

Artistic Impression

SIGNATURE III – FLOOR PLAN



Typical Floor – approx. 25,000 sq ft

Column less span for enhanced efficiency

PROJECT USP's

- ✓ **Grade – 'A' Building**
- ✓ **World class Architecture by CALLISON offering environment friendly office spaces**
- ✓ **Surrounded by acres of elegantly landscaped gardens & green belt**
- ✓ **Building Management Systems**
- ✓ **Double Insulated Glazing**
- ✓ **External Façade : Curtain Glazing, Sandstone & ACP**
- ✓ **Energy Efficient High side Service Equipments**
- ✓ **Turnstiles at Ground Floor Lobby ***
- ✓ **Lifts equipped with Destination Control System ***
- ✓ **Net Based Visitor Management System ***

- ✓ The complex is located in a developed sector with direct ingress and egress from NH-8
- ✓ Elite occupiers in the neighborhood such as Google, Genpact, ZS Associates, Accenture, HT Media etc.
- ✓ Three tier security system with state-of-art security at the entrance, lobby and basement.
- ✓ Main entry gates with boom barriers and under vehicular security scan.
- ✓ Basement entries/ exits and other strategic areas have CCTV surveillance cameras with round the clock recordings.
- ✓ Turnstiles at the ground floor lobby operated with access cards only *.
- ✓ Baggage scanner on the ground floor and mail room to secure the deliveries/ belongings*.

* Optional, as per occupant's requirement.

THANK YOU

ZRICKS.COM

unitech