



**THE
FIVE SUMMITS
ADDRESS**





The Address Makers is a professionally managed Real Estate development arm of Piramal Fund Management. Piramal Fund Management is a leading Real Estate Private Equity & Debt platform promoted by Piramal Enterprises, a multi-billion dollar business conglomerate with diverse interests such as pharmaceuticals, specialty glass, real estate and financial services with operations in over 100 countries across three continents.

Piramal Fund Management encompasses an overall corpus of over INR 7500 crores across 7 Funds and 3 third party mandates. The fund has investments across various real estate projects in Mumbai, NCR, Bangalore, Pune, Hyderabad and Chennai.

THE ADDRESS MAKERS has carved out a vision that it foresees to achieve in residential offerings. The expertise and practical understanding of real estate industry offers an inherent assurance of successful implementation & timely delivery of real estate projects.



THE FIVE SUMMITS ADDRESS

The Five Summits Address at Whitefield offers 224 units of condos, duplex and penthouse with selected features that describe fine and luxurious living in a new perspective. Double height cantilevered extended decks, a 28,000 sq ft. clubhouse on the terrace and an infinity edge swimming pool are some of the features that justify the new perspective of fine and extravagant living. Located opposite the Sathya Sai Hospital, the five acre plot will host five towers of thirteen floors each with over 80% of the property dedicated to the landscape.

The Five Summits Address clearly brings a new meaning to the clichéd claim of proximity. Located at the heart of EPIP / Whitefield, with schools, hospitals, shopping and entertainment destinations all in close proximity. Come and live the new perspective of a fine and luxurious living.





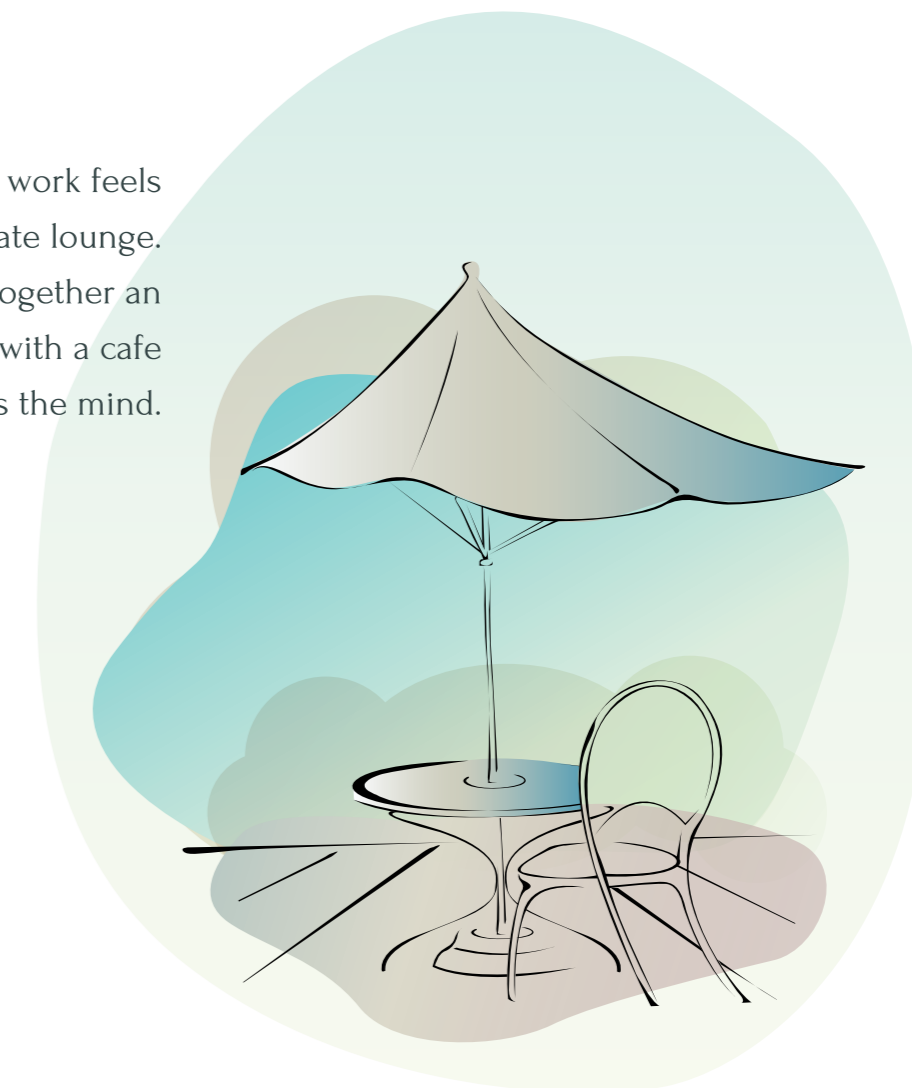
LOCATION MAP



Aerial cafe



Unwinding after a day's work feels even better at your private lounge. The aerial cafe brings together an ambience to live for along with a cafe that truly reinvigorates the mind.



Landscaped gardens



With 80% of the area landscaped,
you can be sure to find greenery
all around. Just what the doctor ordered.



Infinity pool

Taking a dip will never feel as inviting as it does in an infinity pool. With a jacuzzi and fully-equipped world class gym right at hand, healthy living finds new meaning at home.



MASTER PLAN



FLOOR PLAN

Three BHK

1779 sqft



Three BHK

2592 sqft



Four BHK

3180sqft



Pent House

3400 sqft



Lower Penthouse

Upper Penthouse

Terrace

Pent House

4364 sqft



Lower Penthouse

Upper Penthouse





Amenities

Sports

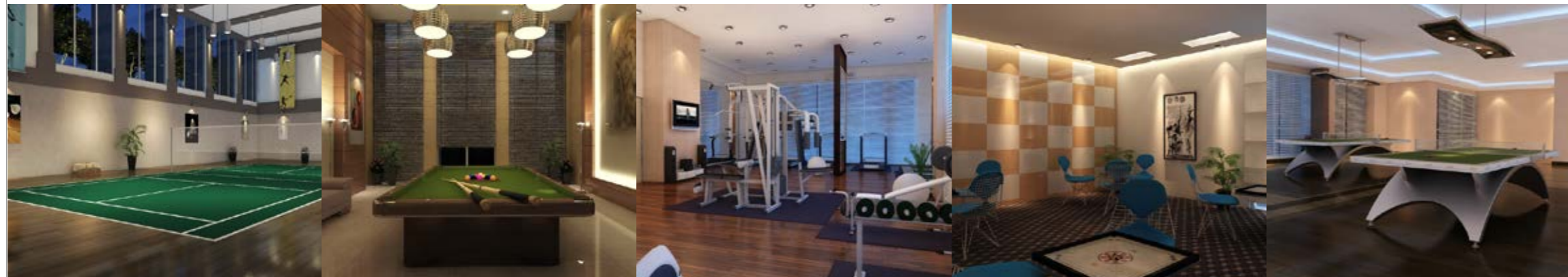
- Squash , Badminton, Table Tennis ,Billiards, Jogging Track, Children Play area, Skating area, Carrom & Chess room

Relaxation & Recreation

- Gymnasium, Steam, Sauna, Jacuzzi, Swimming pool, separate toddlers pool, Arial Café @Terrace, Multipurpose Hall, Outdoor Spill Area at terrace level
- Convenience
- Convenience Store, Creche, Propcare Office, Library, Ramp for disabled.

Specifications

- Set amidst a sprawling 5 acres in the heart of EPIP zone within Whitefield.
- The “project” has 224 luxury apartments in 5 blocks of A,B,C - 13 (G+12) and E, F is 12 (G+11).
- It features unique floor plans that have balconies extended with double height decks & planters adding privacy & greenery along the vertical facade.
- Double height entrance for Common Lobbies.
- 80% of the property is open space
- 3 & 4 bhk apartments and a few duplex and penthouses. Only four units per floor in each block
- 3 BHK: 1779 sqft – 2585 sqft
- 4 BHK: 2900 sqft – 3181 sqft
- Duplex: 3505 sqft – 3138 sqft
- Penthouses: 3400 sqft – 5600 sqft
- Adequate parking is provided in the basements.
- 28000 sqft club house with extensive amenities.



Amenities

Structure

RCC framed structure (designed for seismic zone II),

with solid block masonry walls.

Doors

Main Door: Polished teak wood frame with a BST (both side teak)

door shutter of 8ft height. Brass or SS finish hardware for the main

door.

Other Internal Doors: Hardwood frame with flush shutters of 8 ft

height and SS hardware

Toilet Door: Hardwood frame with a commercial moulded

shutter of 8 ft. height with enamel paint & SS hardware

Balcony Door: UPVC doors with a provision for one mosquito

mesh shutter

Windows

UPVC windows with 5 mm thick clear plain glass & mosquito mesh shutter.

Ventilators

Aluminium ventilator with louvers

Flooring

Living & Dining – Imported marble.

Master bedroom: Laminated wood.

Kitchen & Other bedrooms: Vitrified tiles.

Balconies, Utility & Toilets: Anti-skid ceramic tiles.

Common Lobbies & Corridors: Vitrified Tiles.

Staircases: Main Entry Level – Granite.

All other staircases: Kota stone or Granite.

Clubhouse Entrance Lobbies: Vitrified (1m*1m).

Pool deck & Cafeteria: External wood

LiftLobbies

Combination of polished granite and vitrified tiles

Toilet: Glazed ceramic tiles

Kitchen

Provision for electrical and plumbing points (Granite platform & sink with a drain board will be provided on request at extra cost).

Provision for water purifier.

Provision for hot and cold water mixer for the kitchen sink.

Washing machine point in utility.

Specifications

Toilets

European water closet, Health faucet, Wash basin & Single lever

diverter of Jaquar make (or an equivalent) in all toilets. Concealed

master control ball valve in each toilet from the inside for easier

maintenance. Provision for one geyser in each toilet

Good quality CP fittings of Jaguar or equivalent make

Painting

Internal Walls : Acrylic emulsion paint

Ceiling Oil bound distemper

External Finish: xterior emulsion paint.

Electrical

3 BHK Apartment: 6 KW KPTCL supply & 6 KW DG back up

4 BHK Apartment: 7 KW KPTCL supply & 7 KW DG back up

4 BHK Duplex : 8 KW KPTCL supply & 8 KW DG back up

4 BHK Penthouse: 9 KW KPTCL supply & 9 KW DG back up

100% DG back up for Lifts, Pumps & Common area lighting

100% back up provision for apartments on additional cost

Concealed PVC conduits with copper wiring

Modular switches of a reputed make

AC Points: Conduits with wiring, socket and a control switch for

the master bedroom, living and dining rooms.

Other Bedrooms: Conduits without wiring

TV and Telephone Point: Conduits with wiring, socket and control

switch for the living room and master bedroom.

Other Bedrooms: Conduits without wiring.

Additional Features

Rainwater harvesting, sewage treatment plant

and a water treatment plant.

Security

Round the clock security

Intercom facility for each flat with video door phones

CCTV at key locations for security and monitoringt

Lift

2 high speed lifts for each tower

2 lifts exclusively for the clubhouse

from block A

