

ADARSH
Premia
ZRICKS.COM



ADARSH DEVELOPERS

Beautiful Homes For Beautiful People



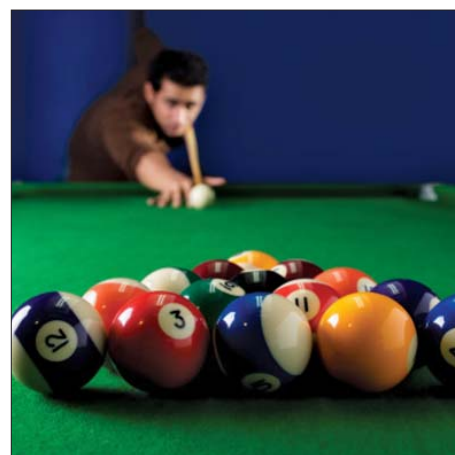
TRUCKS

ADARSH *Premia*

The Premia Life presents itself through ultra luxury 3 & 4 BHK Residences at Banashankari II Stage (on Outer Ring Road), one of Bangalore's finest residential localities.

Exquisitely designed by one of the world's leading design firms, in conjunction with the expert Design Studio at Adarsh Developers, these luxuriously spacious residences, with sizes ranging from 2050 sq ft to 3720 sq ft, also come with 14 exclusive Penthouses on offer.

Best-in-class amenities with 75% of open space and exceptional landscape design, makes this a truly landmark lifestyle offering from Adarsh Developers, Bangalore's leading and internationally renowned developer.



Amenities

- Swimming Pool • Health Club with Jacuzzi
- Fully Equipped Gym • Yoga cum Aerobics Hall
 - Tennis Court • Table Tennis
- Pool Table • Community Hall • Library

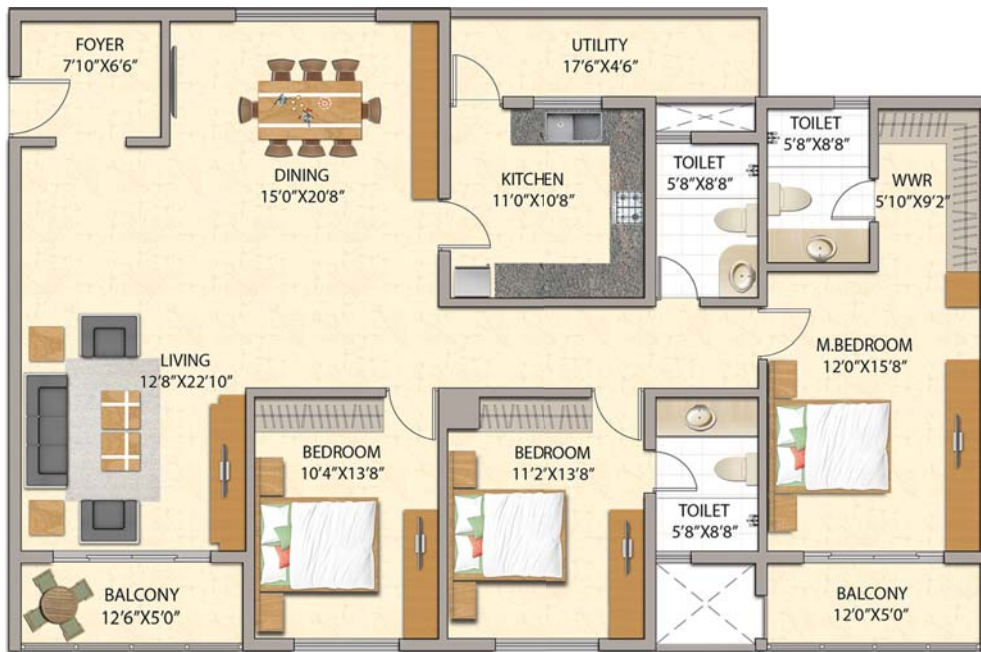
Key Plan

Legend :

- | | |
|-----------------------------------|--------------------------------------|
| 1. Entry Portal & Guard House | 12. Swimming Pool with Overflow Edge |
| 2. ID Sign Feature | 13. Pebble-Bed Trough |
| 3. Driveway | 14. Vine Covered Trellis |
| 4. Ramp Trellis | 15. Barbeque Pavilion |
| 5. Circular Plaza | 16. Privacy Wall |
| 6. Fire Driveway | 17. Children's Play Area |
| 7. Feature Wall Frame with Spouts | 18. Grand Lawn |
| 8. Timber Deck | 19. Zen Garden |
| 9. Pool Deck | 20. Meditation Pavilion |
| 10. Kids Pool | 21. Jogging Trail |
| 11. Floating Stepping Pads | 22. Tennis Court |



UNIT B1



B BLOCK
3 BEDROOM

AREA : 2285 SFT

UNIT C2



C BLOCK
3 BEDROOM

AREA : 2275 SFT

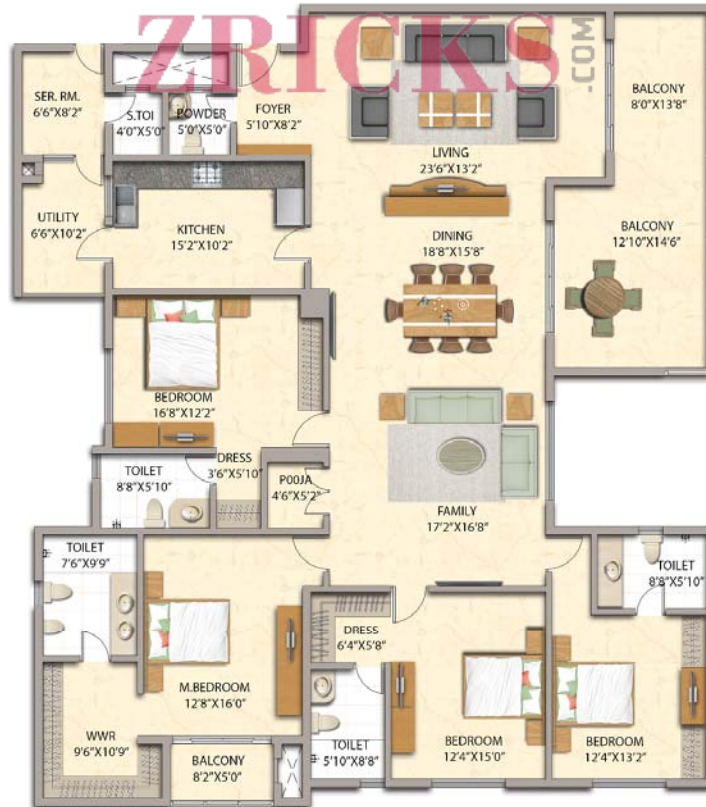
UNIT D2



D BLOCK
4 BEDROOM

AREA : 2905 SFT

UNIT D1



D BLOCK
4 BEDROOM

AREA : 3720 SFT

Specifications

STRUCTURE:

- Seismic zone II compliant - RCC external core and beamless structure.

INTERNAL FINISH:

- All internal walls smoothly finished with plastering in all flats.

FLOORING:

- Imported marble flooring in living and dining areas of all flats.
- Imported marble flooring in family rooms for unit type D1, D4 and Penthouses.
- Engineered wooden flooring in all bedrooms.
- Superior quality vitrified tile flooring in kitchen.
- Ceramic tiles in balconies and utility area.
- Imported marble / granite flooring in ground floor lift lobbies and vitrified tiles in all other floor lift lobbies.

TOILETS:

- Superior quality ceramic tiles dado for all toilets.
- White color EWC & washbasin with granite counter top & mirror in all toilets except powder room.
- Glass shower cubicle in all toilets of 3 BHK flat except servant toilet.
- Glass shower cubicle in all toilets of 4 BHK flat except powder room and servant toilet.
- Single lever shower mixer in all showers and single lever mixer in all washbasins except servant toilet.

DOORS:

- Superior quality engineered designer door frames & shutters for all main, bedroom, kitchen and toilet doors.
- UPVC sliding doors with 3-tracks (one with mosquito mesh) for living room to balcony & bedroom to balcony doors.

WINDOWS:

- UPVC sliding windows with 3-tracks (one with mosquito mesh).

KITCHEN:

- Granite platform with stainless steel sink of single bowl and vegetable bowl with drain board.
- 2 feet dado above platform area with ceramic tiles.

PLUMBING:

- Superior quality CP Fittings.
- Good quality PVC drainage & storm water pipes.

ELECTRICAL:

- Electrical, TV and telephone points in living, family and all bedrooms.
- Good quality electrical wires & switches.
- 3BHK, 4BHK & 5BHK (Penthouse) residences will be provided with power supply of 7kW, 10kW & 12kW respectively.
- Full power back up for all residences.

LIFTS:

- Advanced high speed lifts.

LPG SYSTEM:

- Reticulated LPG gas piping system in all kitchens.

OTHERS:

- Fiber to the home (data and voice).
- High tech CCTV surveillance for the common areas.
- Access controlled boom barriers.
- Garbage disposal system with refuse chute.

The Premia Life comes with Security and Provision for Home Automation System

Hi-tech features:

- Visitor Management System – A door camera with an automated colour display unit
- Portable touch screen tablet
- In-built Intercom facility
- LPG gas leak detection system in every kitchen
- Fire and smoke detection system with sprinklers in every room
- Provision for automated lighting & curtain controls



Location Map



Landmarks:

Key Distances : Jayanagar - 4 kms, City Railway Station - 8 kms, M.G.Road - 9 kms, International Airport - 42 kms, Vidhana Soudha - 9 kms, Electronic City - 16 kms, Hebbal - 22 kms & ITPL - 27 kms

Schools & Colleges: Carmel School, Deccan International School, BIPS, Kumarans, PESIT, RVIT, BMS IT, RNSIT, JSSATE, SJBIT, Kumarans College, Global Academic, National College, Vijaya & Dayanand Sagar

Hospitals: D.G. Hospital, KIMS, Sagar, KR Hospital, BGS Global Hospital



ADARSH DEVELOPERS

Beautiful Homes For Beautiful People

Sales Lounge: No. 3, Kadirenahalli, Outer Ring Road, Banashankari II Stage, Bangalore - 560 070. Tel: 080 26891344

Corporate Office: No. 10, Vittal Mallya Road, Bangalore - 560 001. Tel: 080 41343399/3400

premia@adarshdevelopers.com www.adarshpremia.com

www.adarshdevelopers.com