



**ADARSH DEVELOPERS**

*Beautiful Homes For Beautiful People*



# ADARSH CITRINE

**A world, all your own**

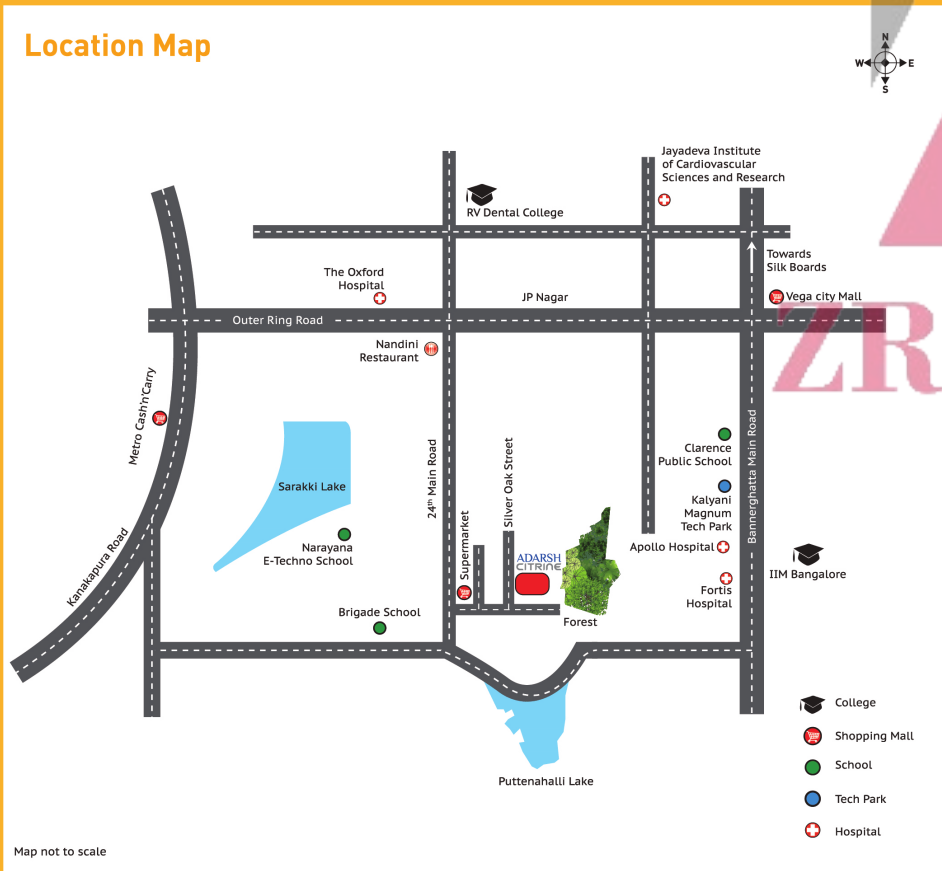
# ADARSH CITRINE

A home is more than a sanctuary. It is a place that begins where the rest of the world ends. It is a place where words come easy, and laughter, without inhibition. Even breathing becomes a little easier because your home is your world.

Adarsh Citrine offers homes that exude exclusivity. With only 64 apartments, at Citrine, you will find a home that is truly your own. Spread over just 4 floors, Citrine offers 2 BHK and 3 BHK homes, with a luxury that only a privileged few can aspire. A community that brings with it the comfort of familiar faces, neighbors who recognize you, and the delight of camaraderie.

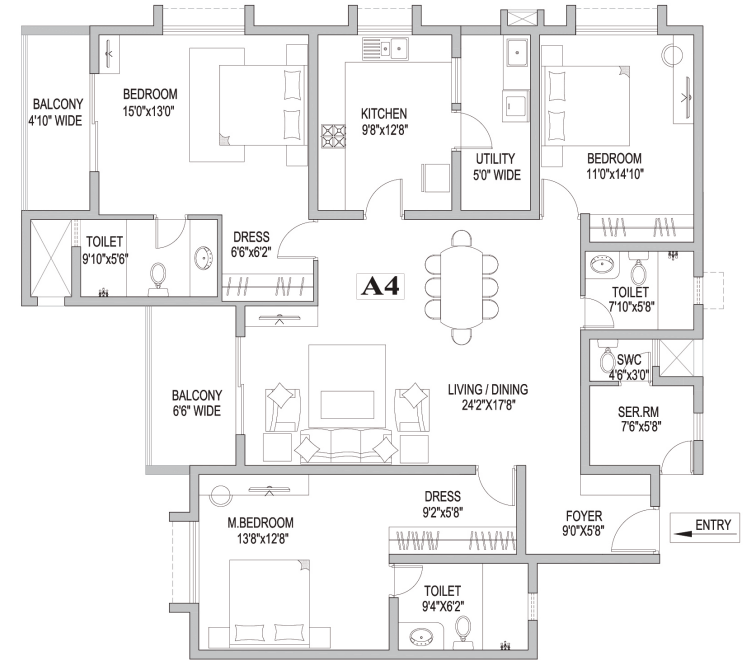
Adarsh Citrine is an amalgamation of beauty and exclusivity, an island at the heart of South Bangalore with green environs and the close proximity of Puttenahalli Lake.

## Location Map



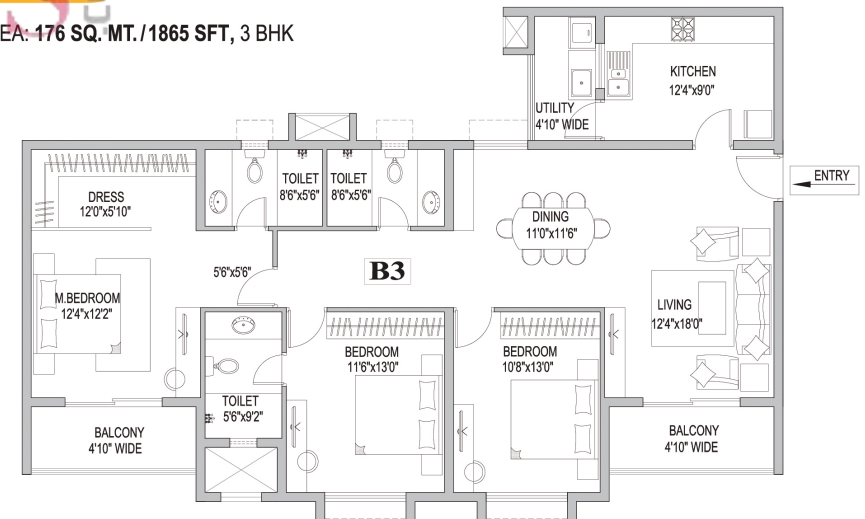
## BLOCK - A

UNIT AREA: 206 SQ. MT./2225 SFT, 3 BHK + Servant Room



## BLOCK - B

UNIT AREA: 176 SQ. MT./1865 SFT, 3 BHK



## SPECIFICATIONS

### STRUCTURE:

- Seismic Zone II Compliant RCC framed structure.

### PLASTERING:

- All internal walls smoothly plastered with lime rendering.
- External plastering with sponge finish.

### FLOORING:

- Superior quality vitrified tiles in living, dining and all the other bedrooms except master bedroom of all flats.
- Laminated wooden flooring in Master Bedroom of each flat.
- Superior quality Vitrified tile flooring in kitchen.
- Superior quality Vitrified flooring in all floor lift lobbies.
- Kota / Tandoor Stone for staircase.

### TOILETS:

- Superior quality Ceramic tiles dado for all toilets for 2.1m (7 feet) height.
- White color EWC & washbasin with Granite / Marble counter top & mirror in all toilets except SWC.
- Glass shower cubicle in Master Bedroom Toilet.

### DOORS:

- Main door - Superior quality designer door frame & shutter.
- Bedroom doors, kitchen door & toilet doors - Superior quality engineered door frames & shutters.
- UPVC Sliding doors with 3-track (one with mosquito mesh)

### WINDOWS:

- UPVC sliding windows with 3-tracks (one with mosquito mesh).

### KITCHEN:

- Granite Platform with Stainless steel single bowl and Vegetable bowl with drain board.

### PAINTING / POLISHING:

- Interior: Plastic Emulsion Paint.
- Exterior: Acrylic Emulsion Paint.

### ELECTRICAL:

- One TV point in living and all Bedrooms. (Signal quality to be maintained by the Client/ Service provider).
- Geyser in all toilets except for SWC.
- Exhaust fans in all toilets.
- Telephone points in all bedrooms & living area.
- Electrical AC point in all bedrooms & living area.
- 2 BHK & 3 BHK flat will be provided with power supply of 5 kW & 6kW respectively.

### BACK UP GENERATOR:

- Stand by generator for lifts, common area lighting. Full power back up for each apartment.

### AMENITIES

- Gymnasium
- Community Hall



## ADARSH DEVELOPERS

*Beautiful Homes For Beautiful People*

Sales Lounge: #3, Outer Ring Road, Kadirenahalli,  
Banashankari II Stage, Bangalore-560070. Tel: 91-80- 26891344

email: [enquiry@adarshdevelopers.com](mailto:enquiry@adarshdevelopers.com)

[www.adarshdevelopers.com](http://www.adarshdevelopers.com)

