





VASANTHA CITY





PLOT AREA = 3150.00 Sq.ft. (or)
350.00 Sq.yds.

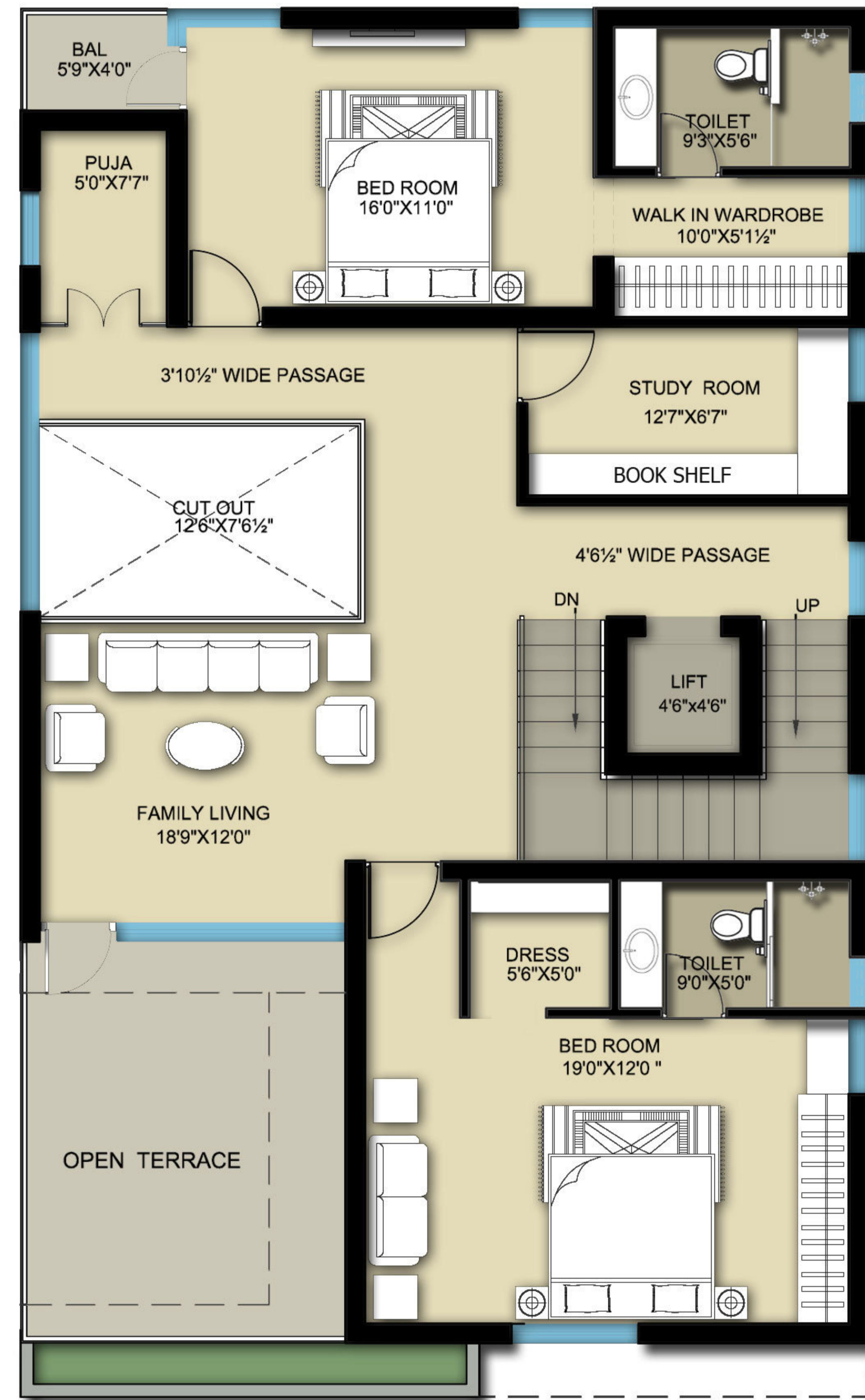
GROUND FLOOR : 1709.30SFT
FIRST FLOOR : 1709.30SFT
SECOND FLOOR : 1137.74SFT
TOTAL : 4556.34SFT

EAST FACING VILLA

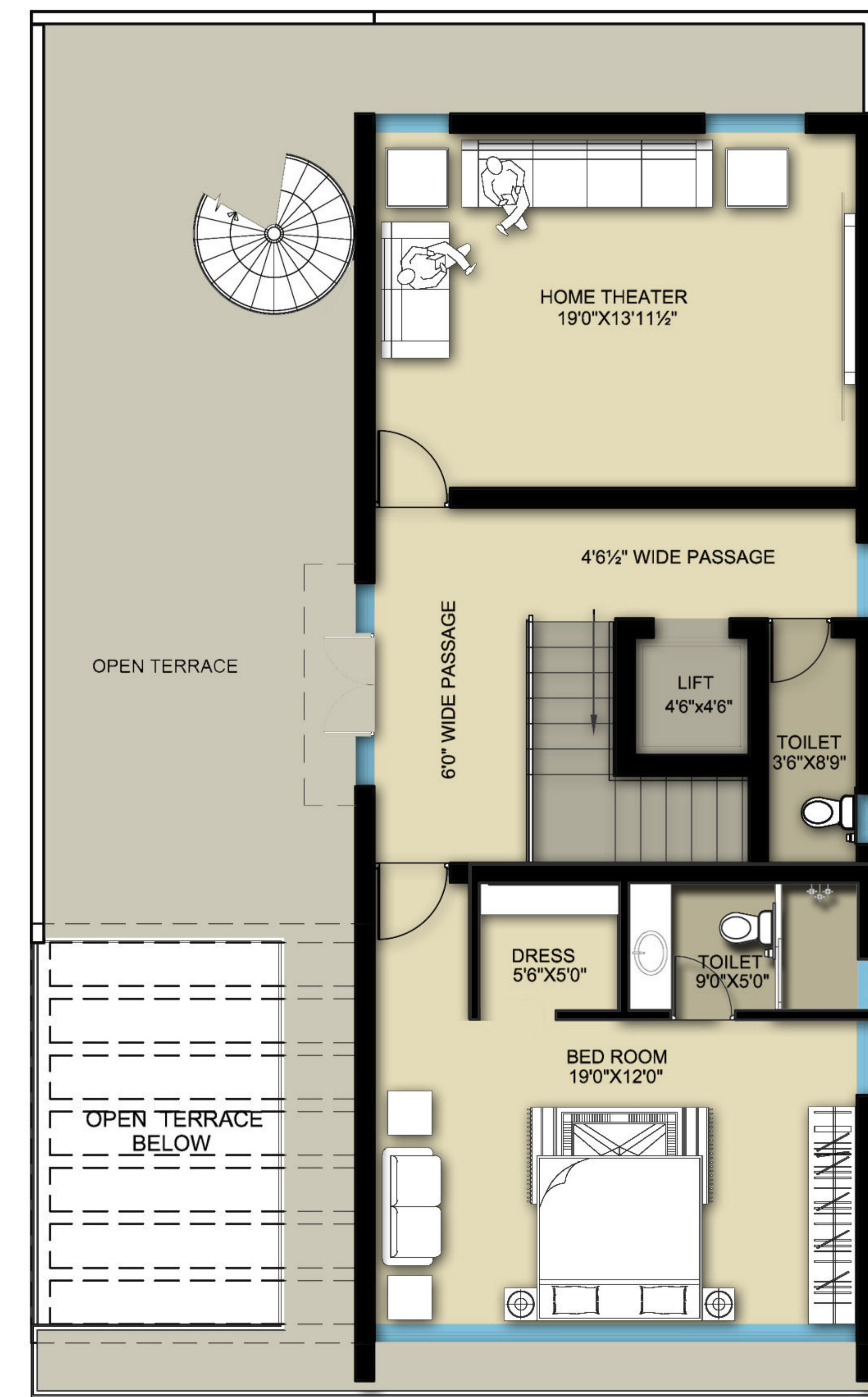
45'-0" X 70'-0"



GROUND FLOOR PLAN



FIRST FLOOR PLAN



SECOND FLOOR PLAN

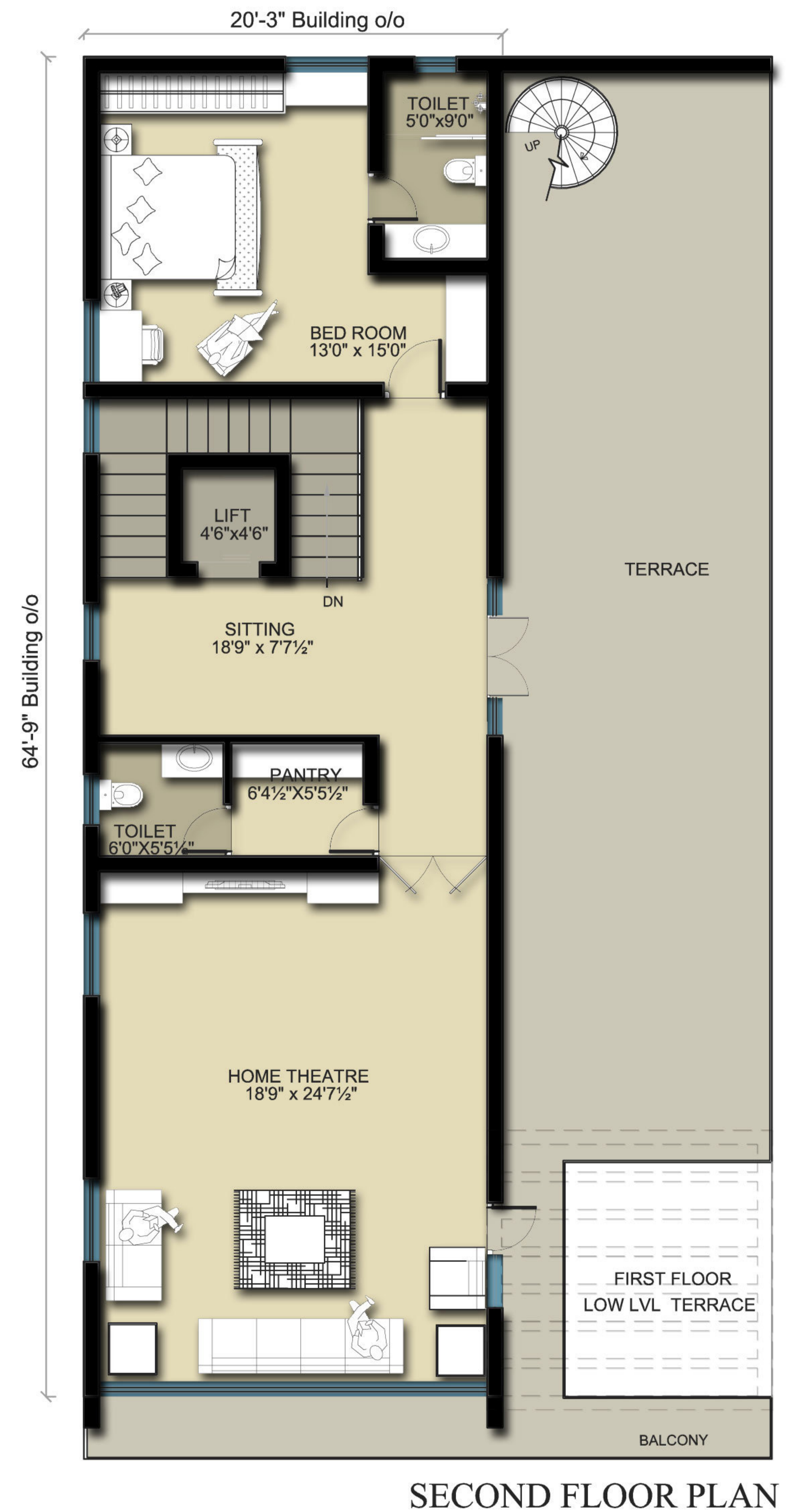
WEST FACING VILLA

45'-0" X 70'-0"

AREA STATEMENT

PLOT AREA =	3150.00 SFT
	(or) 350.00 Sq.yds.
GROUND FLOOR:	1,779.27 Sq.ft.
FIRST FLOOR :	1,779.27 Sq.ft.
SECOND FLOOR :	991.35 Sq.ft.
TOTAL :	4,549.90 Sq.ft.

AREA RATIO :- 1:1.44

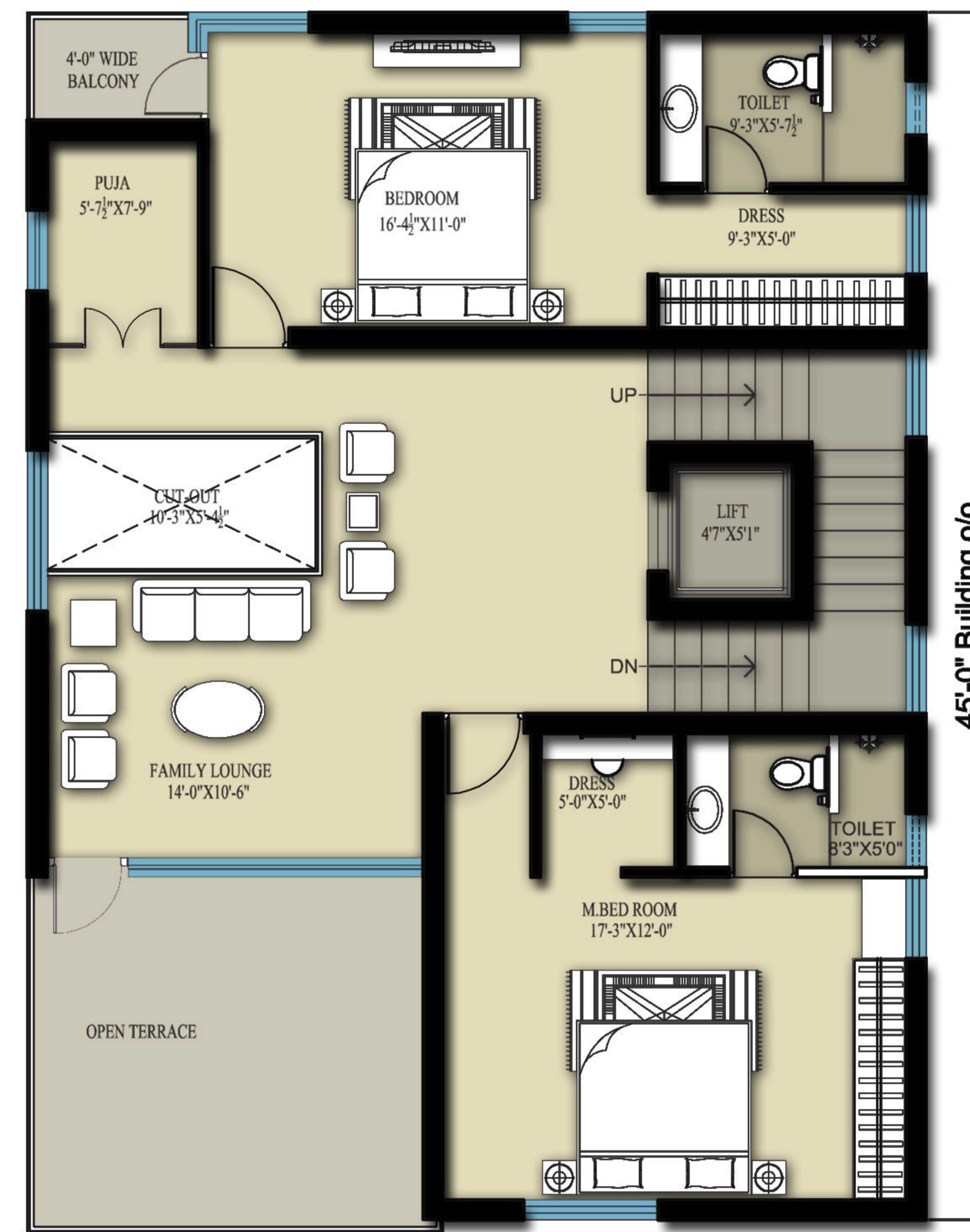
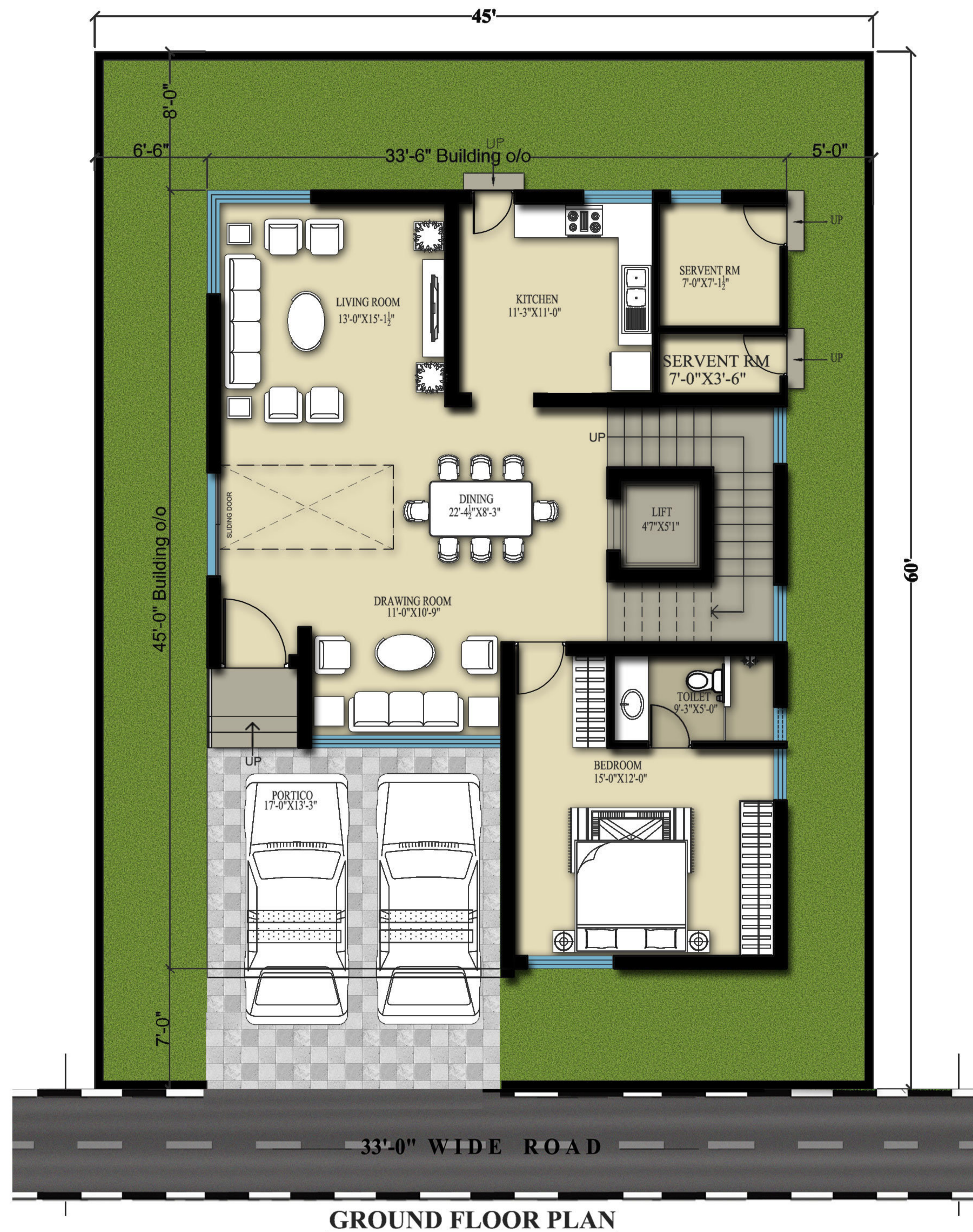


EAST FACING VILLA

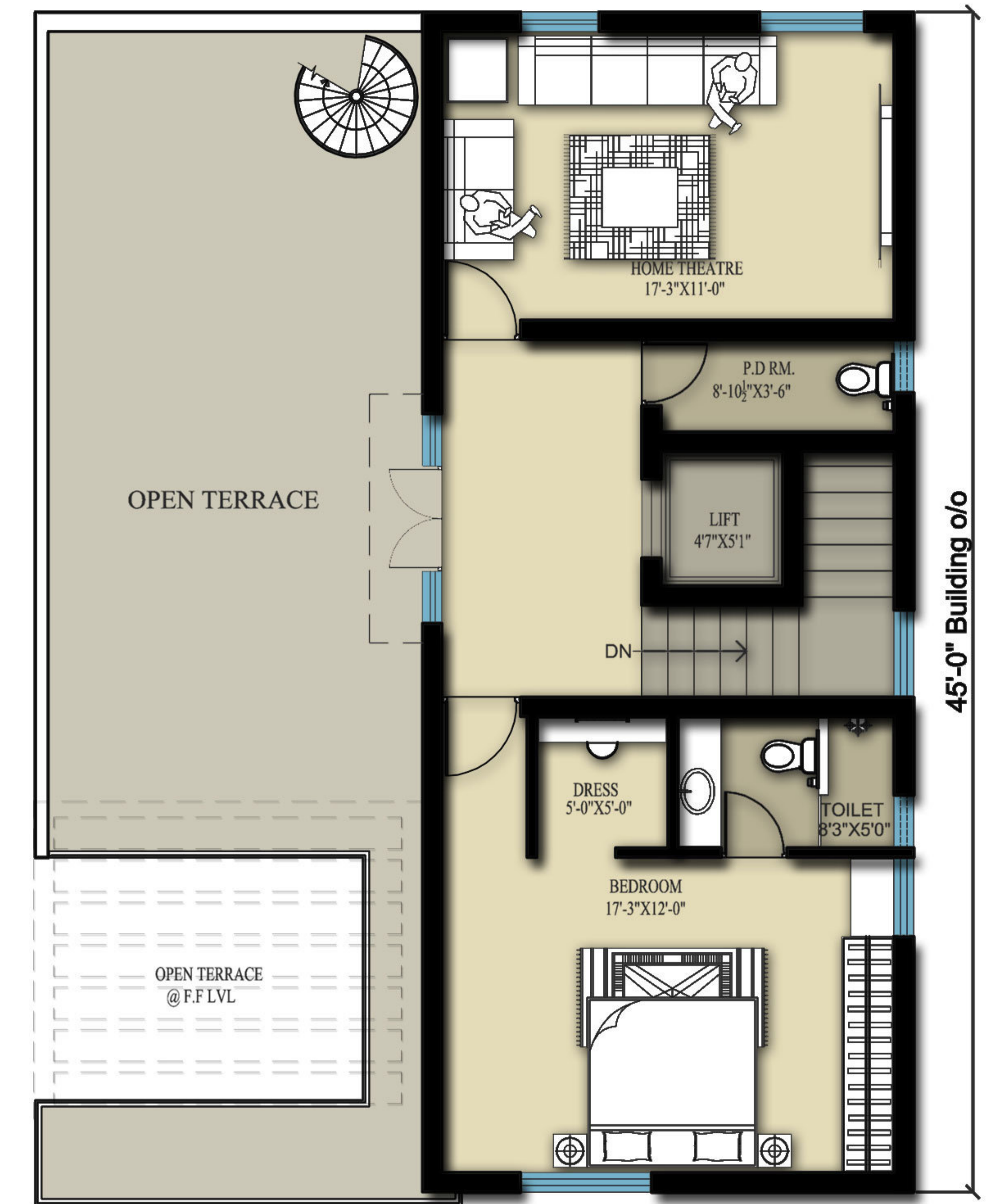
50'-0" X 90'-0"

AREA STATEMENT

PLOT AREA	: 4,500Sq.ft.(or)
	500 Sq.yds.
GROUND FLOOR	: 2,210.90Sq.ft.
FIRST FLOOR	: 2,210.90Sq.ft.
SECOND FLOOR	: 1431.60 Sq.ft.
TOTAL	: 5,853.40 Sq.ft.



FIRST FLOOR PLAN



SECOND FLOOR PLAN

WEST FACING VILLA

45'-0" X 60'-0"

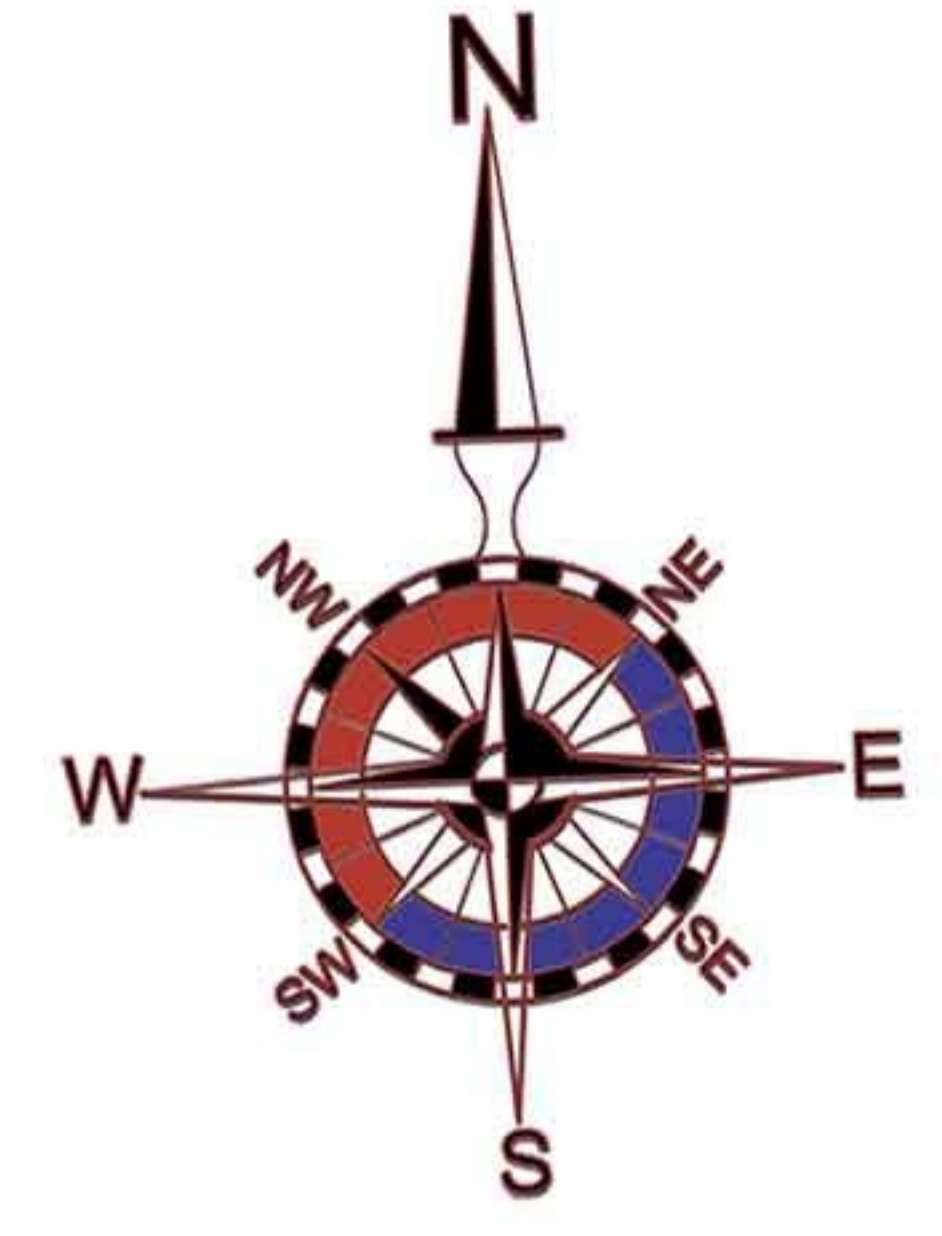
AREA STATEMENT

PLOT AREA = 2700.98 SFT
(or) 300.10 Sq.yds.

GROUND FLOOR: 1,516.41 Sq.ft.
FIRST FLOOR : 1,516.41 Sq.ft.
SECOND FLOOR : 843.78 Sq.ft.
TOTAL : 3,876.60 Sq.ft.

AREA RATIO :- 1:1.43

LAYOUT PLAN



VASANTHA GEEN PROJECTS

LAYOUT PLAN

VASANTHA CITY
AT HITEC CITY

PROJECT HIGHLIGHTS

- A Premium gated community**
- High quality construction with superior quality material**
- Vaastu compliant**
- All round compound wall with solar fencing**
- Underground electric cabling**
- Designer lighting & landscaping**
- Amphi-theater**
- Water softening system**
- Sewage treatment plant**
- 100% Power backup excluding AC**
- 24-hr security with Intercom & CC TVs**







AREA STATEMENT IN SQ. YARDS

VILLA NO	AREA
1	462.60
2	300.89
3	310.83
4	317.61
5	320.14
6	307.09
7-87	350
88-102	500
103	546.9
104-148	350
149	332.34
150	354.16
151-157	350
158-165	300
166-172	350
173	332.97
174-197	350













SPECIFICATIONS

RCC FRAMED STRUCTURE

Columns, beams and slabs in RCC M20 grade concrete

SUPER STRUCTURE

Brick walls with CM (1:6) ratio. First class table moulded light weight clay bricks / Flyash CC bricks

PLASTERING

INTERNAL: Double coat cement plaster with smooth finishing

CEILING: Single coat smooth cement plaster finishing

EXTERNAL: Double coat sand faced cement plastering

JOINERY WORKS

MAIN DOOR: BT wood door frame & flush shutter with two sides veneer aesthetically designed with melamine polishing and designer hardware of reputed make

INTERNAL DOORS: BT wood frame with designer flush shutter with two sides veneer, with polishing and standard hardware fittings

TOILET DOORS: BT wood frame and hard core filled water proof flush shutter of reputed make with one side veneer, one side point fitted with standard hardware

FRENCH DOORS: UPVC sliding and fixed shutters with single glazed float glass (Fenesta or equivalent make)

WINDOWS: UPVC (Fenesta or equivalent make) sliding and fixed shutters with double glazed float glass and standard hardware

PAINTING

INTERNAL: Smooth finish with huppam Altek or equivalent, and two coats of Acrylic Royal emulsion paint or equivalent over a coat of primer

CEILING: Smooth finish with huppam Altek or equivalent and two coats of Acrylic Royal emulsion paint or equivalent over a coat of primer

EXTERNAL: Combination of texture and huppam finish with Apex Ultima paint as per architectural design

FLOORING

DRAWING/HOME THEATER: Laminated wooden flooring or optional @ Rs.150/- per Sft including fixing

DINING/LIVING: Imported marble flooring (Rs. 250/- per sft including material, laying & polishing)

BEDROOMS: Combination of laminated wooden flooring and marble Rs 150/- Sft including laying

STAIRCASES: Imported marble flooring (Rs 225/- Sft including material, laying & polishing)

KITCHEN: Granite platform with stainless steel sink (Franke or equivalent) (Granite of Rs 150/- Sft variety)

BALCONY AND SIT-OUT: Anti-skid matt finished vitrified tiles (Rs 60/- Sft variety)

TOILETS: Imported anti-skid and acid resistant tiles (price Rs 75/- Sft including material and laying)

PARKING: Granolithic paving block flooring

TILE CLADDING & DADOING

KITCHEN: Glazed ceramic tile dado upto 2'0" ht above kitchen platform (Rs 75/- Sft including material & fixing)

TOILETS: Designer (imported) tiles price range Rs 75/- per Sft including material and laying upto 7ft height

UTILITY/WASH: Glazed ceramic tiles dado up to 4'0" height (Rs 50/- per Sft including material and fixing)

UTILITIES/WASH

Provision for washing machine, dish washer & wet area for washing utensils etc

TOILETS

All toilets shall consist of:

Granite counter washbasin with single lever basin mixer

Wall hung EWC of TOTO or equivalent make

Hot and cold single lever diverter with shower

Health faucet/bb tap near EWC

Provision for exhaust fan in all toilets kitchen

C.P. fittings of Grohe/Kohler or equivalent

Solar water heating system on terrace

ELECTRICAL

Concealed copper wiring in conduits for lights, fan, plug and power points wherever necessary of standard make (Havells or equivalent).

Split air conditioners for hall, bedrooms, drawing room and home theater

Internal lift for all villas

TELECOM

Telephone points in all bedrooms, drawing, dining and living areas. Video door phone at entrance of each villa.

Provision for internet connection.

Intercom facility in all villas connecting to Security & clubhouse.





VASANTHA CITY

AT HITEC CITY

