



aaradhya tower

Ghatkopar East





stay in TOUCH

Welcome to
Aaradhya Tower – homes
located at the core of
Ghatkopar, that
keep you in touch with all
sides of life.

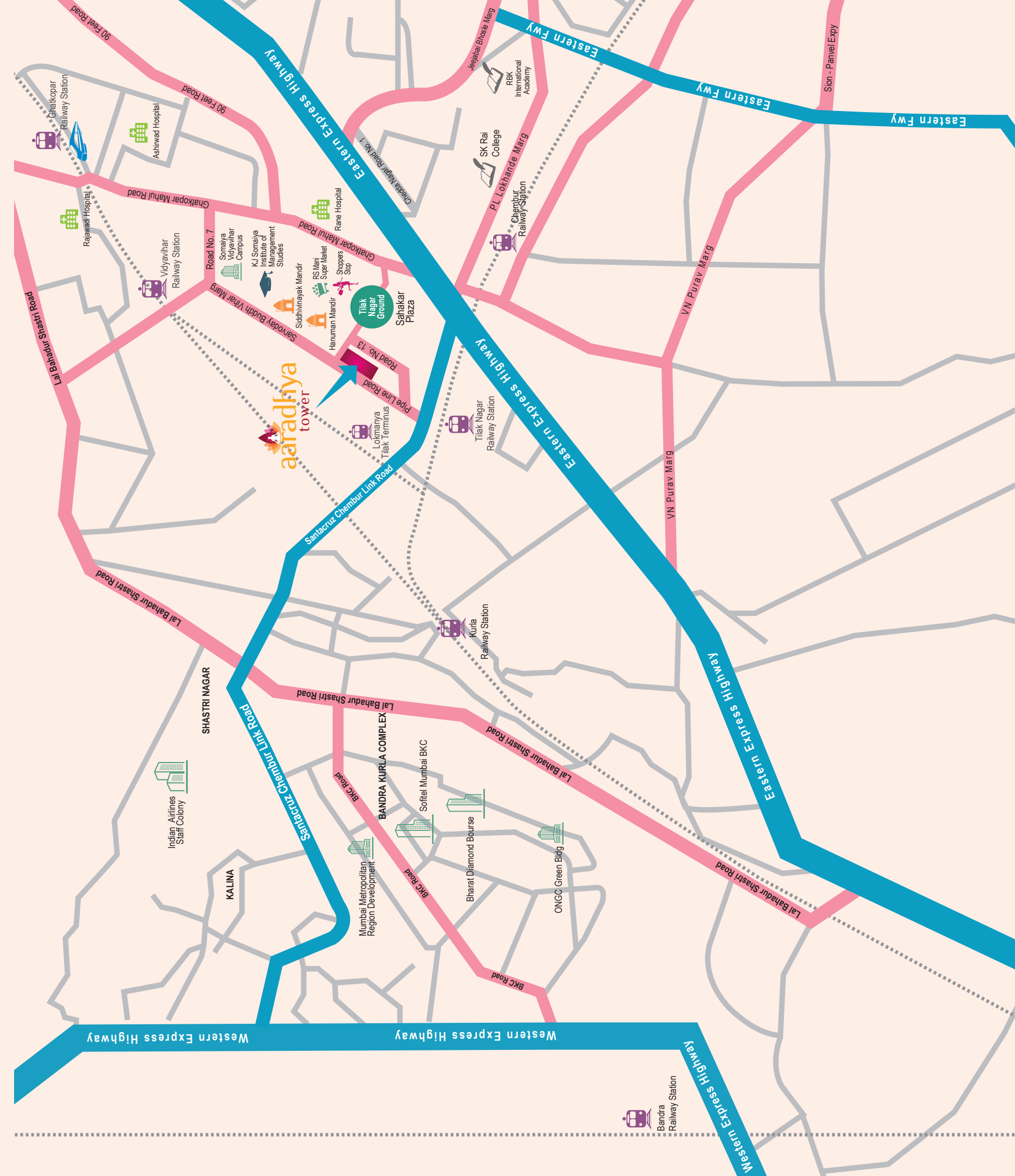


stay in TOUCH with your WORLD

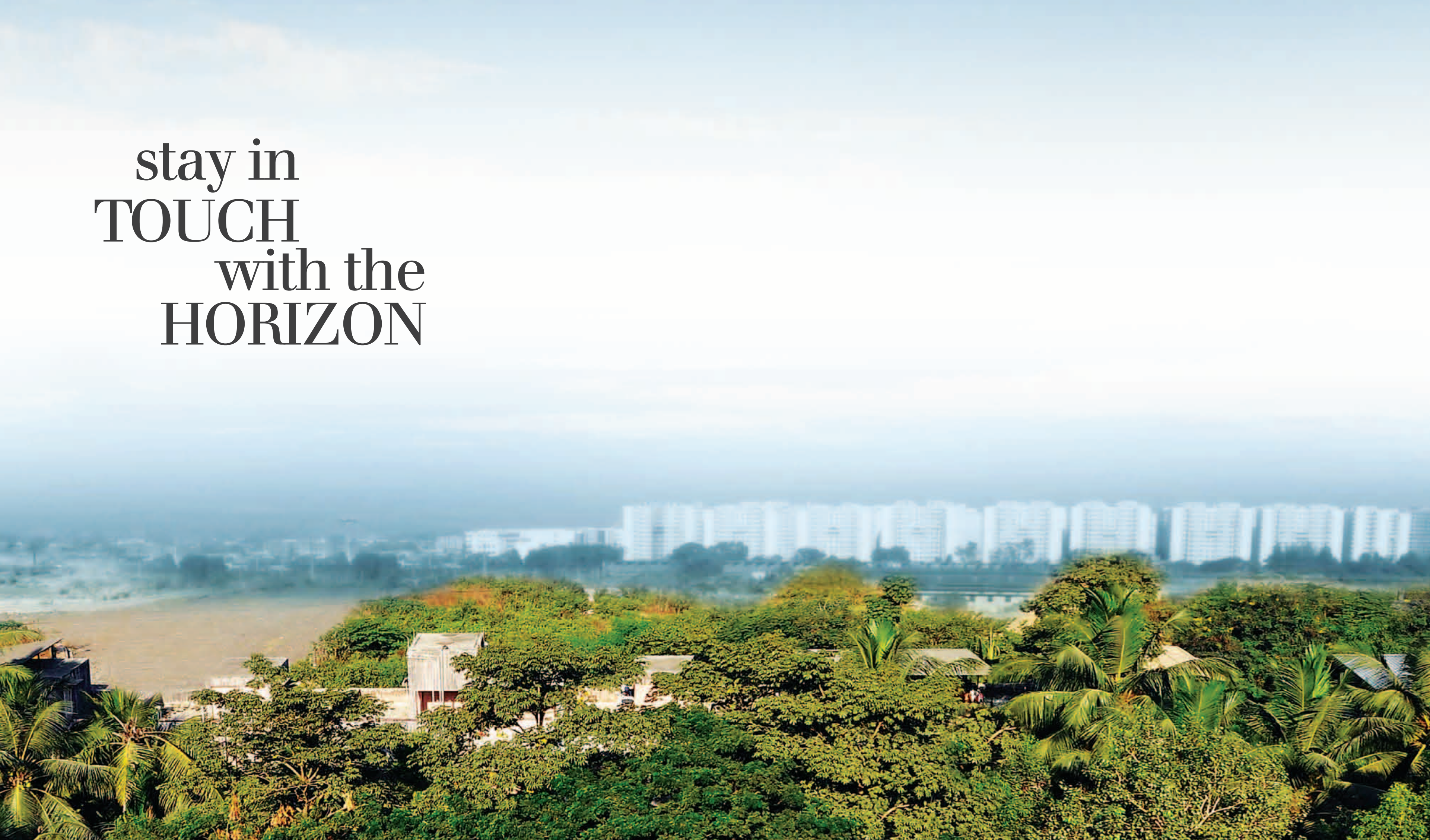
The prime central suburban location offers easy connectivity through the Western Express Highway, Eastern Express Highway, and Sion Panvel Express Highway.

and all the while maintaining an atmosphere of serenity and peace of mind.

Temples	Supermarket	Shopping Malls	Schools	Colleges	Railway Stations	Metro Stations	Hospitals	Bridges
Ganesh Mandir Hanuman Mandir Jain Temple Saibaba Mandir	RS Mani Supermarket	Phoenix Market City R City Mall Shoppers' Stop	Garodia International RBK International	Somaiya Educational Complex	Chembur Ghatkopar Kurla Terminus Tilak Nagar	Chembur Kurla Vidyavihar	Ashirwad Hospital Rane Hospital Rajawadi Hospital	Santacruz Chembur Link Road



stay in
TOUCH
with the
HORIZON





stay in
TOUCH
with what's
IMPORTANT

The vital
highlights ensure
all your necessities
are met



- ▶ **Freehold land**
- ▶ **100% residential tower**
- ▶ **Children's play area**
- ▶ **Vastu-compliant apartments**
- ▶ **East-West facing apartments**



stay in
TOUCH
with
LUXURY

Building amenities
are designed for a
luxurious way of life






- ▶ **STRUCTURE DESIGN**
 - Earthquake-resistant structure
 - Rainwater harvesting system
- ▶ **RECREATIONAL AMENITIES**
 - Mini gymnasium



- ▶ **CONVENIENCE AMENITIES**
 - Power back-up generator
 - High speed elevators and stretcher lift
 - Multiple-level podium parking with car lift
 - Servants' toilets at every mid-level
- ▶ **GRAND DOUBLE HEIGHT ENTRANCE LOBBY**
- ▶ **DECORATIVE COMPOUND WALL**
- ▶ **FIRE PROTECTION SYSTEMS AS PER CFO NORMS**
 - Water sprinklers system
 - CCTV



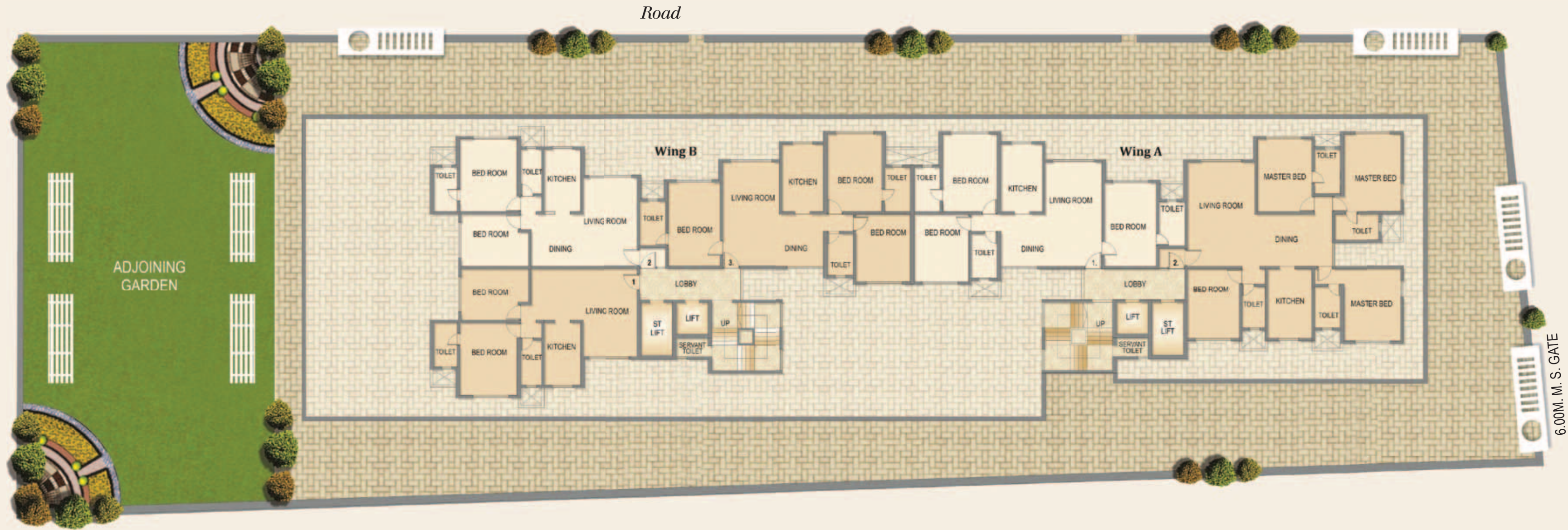
stay in
TOUCH
with
YOUR SPACE



Amenities in the
apartments are designed
for your comforts and
necessities

- ▶ 11 feet floor to floor height
- ▶ 12 feet floor to floor height on top floor
- ▶ Euro series anodized sliding windows
- ▶ Granite kitchen platform with S.S. Sink & service platform
- ▶ Vitrified flooring in all the rooms
- ▶ Wooden finished flooring in master bedroom
- ▶ Concealed copper wiring
- ▶ Additional electric points for microwave, mixer, water purifier, toaster etc.
- ▶ Legrand modular switches
- ▶ High quality Jaguar CP fitting and sanitaryware





layout
PLAN





Wing A

floor
PLAN





Wing B

floor
PLAN





2 BHK



3 BHK

isometric
VIEW





4 BHK



Duplex lower 6th floor

isometric
VIEW





Duplex upper 7th floor

isometric
VIEW





Builders & Developers
S. M. DEVELOPERS

A Group Company of MAN Infraconstruction Limited

Address: Aaradhya Tower, Pipe Line Road, Ghatkopar - East, Mumbai - 400 077.

Website: www.maninfra.com/aaradhyatower | : www.facebook.com/maninfra

Architect
S. V. Thakkar & Associates

Structural Consultant
VMS Consultant

Concept Architect
Mistry & Associates

Consulting Architect
Somaiya & Associates

Note: 1. All renderings plans, drawings, amenities, etc. are proposed and are artist's conception and not actual representation of the building or landscaping etc. and are subject to approval of concerned authorities.
2. The sole discretion to amend, alter, change any of the features, plans, drawings, amenities etc. remains with the Developers.