









Layout



Master Bedroom with provision for a Queen bed, TV & a designated spacious 10 ft. wardrobe space with overhead storage

Attached 3 piece **Toilet** with a Wash Basin, W.C. & Shower

Living Room with provision for comfortable seating & a designated space for your flat-screen TV

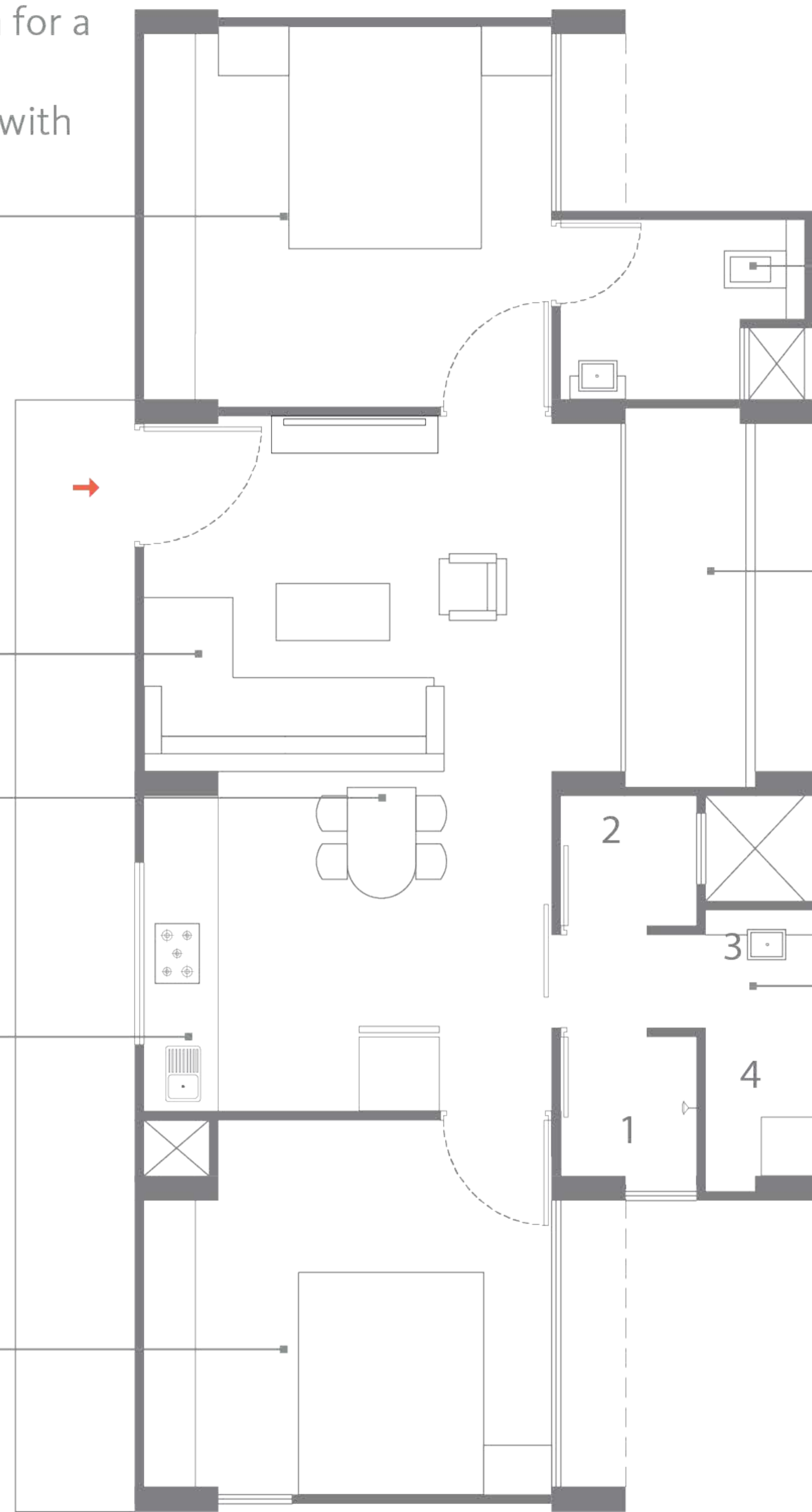
Sun & Rain-proof covered **Open Balcony** with fully openable French doors

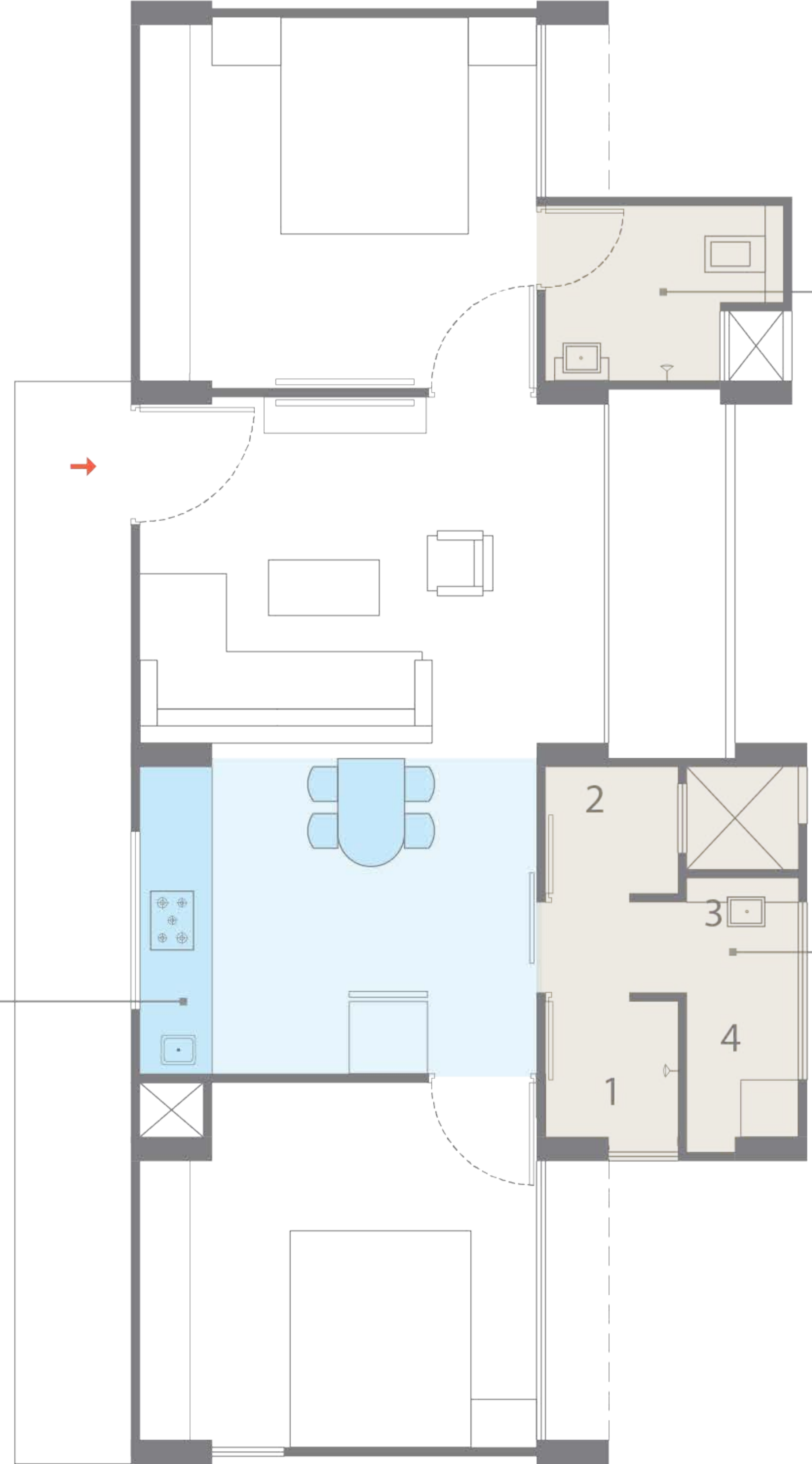
Dining Space to seat 4

Provision for fully equipped **Kitchen** with hob, chimney & modular kitchen cabinets for storage

4 Independent areas. Separate Wash Basin, W.C. Room, Shower Room & Utility Space, Provision for Sliding Door

Second Bedroom with provision for a Queen bed & a designated spacious 8 ft. wardrobe space with overhead storage



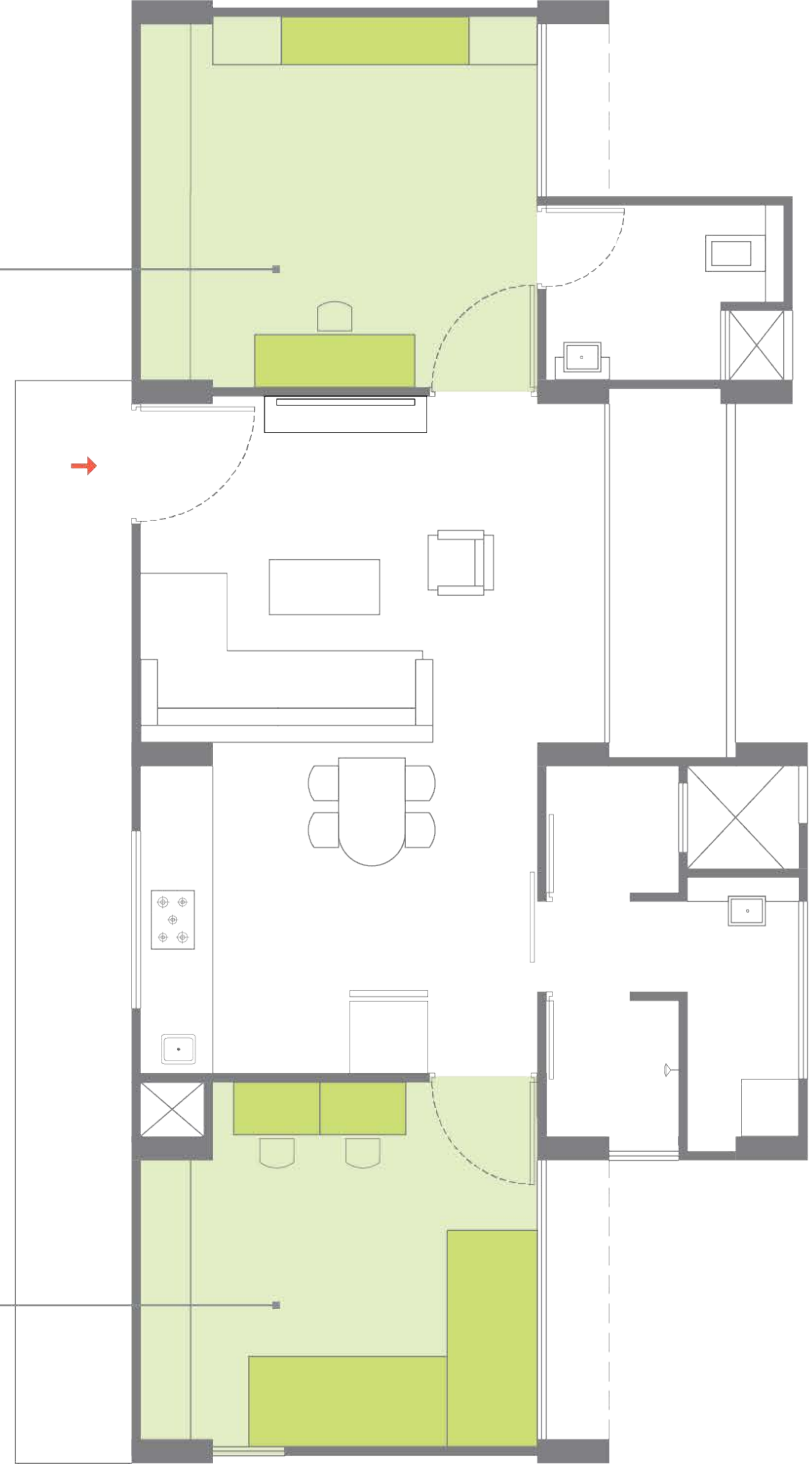


Attached 3 piece **Toilet** with a Wash Basin, W.C. & Shower to ensure you are ready on time for office

- Multi-functional Bath and Utility Space:**
1. Independent Shower room
 2. Independent W.C.
 3. Basin with a large mirror
 4. Multi-purpose utility space

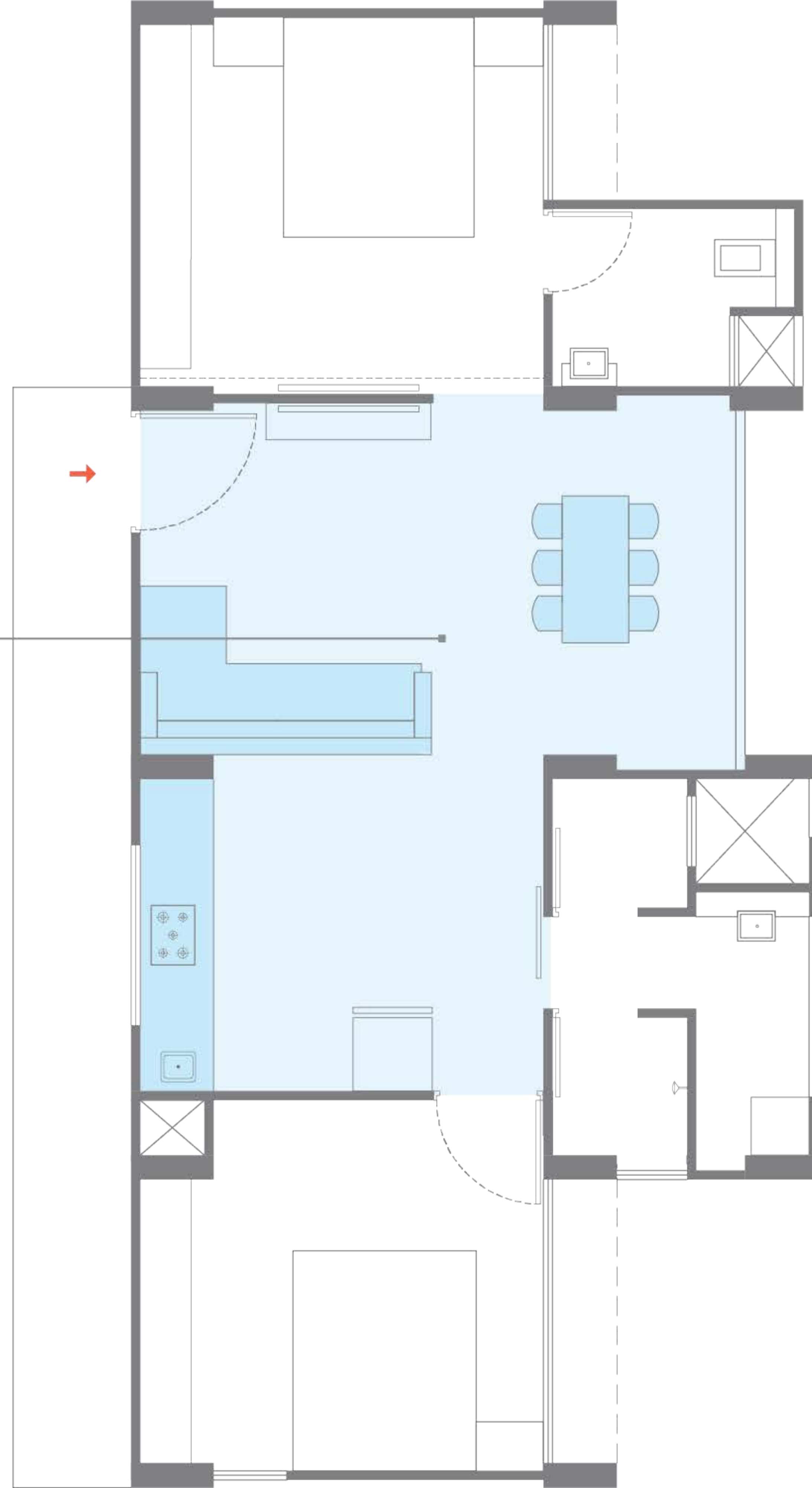
Ample space in the kitchen to cook breakfast & pack lunch. Space for Dining table to serve breakfast. Separate sink area to wash utensils.

Convert your *Master Bedroom* to your *Office* by possibility of folding the wall bed & Plug-in your laptop at your work desk.



Children's Bedroom with provision for twin beds, study tables with bookshelves & a wardrobe

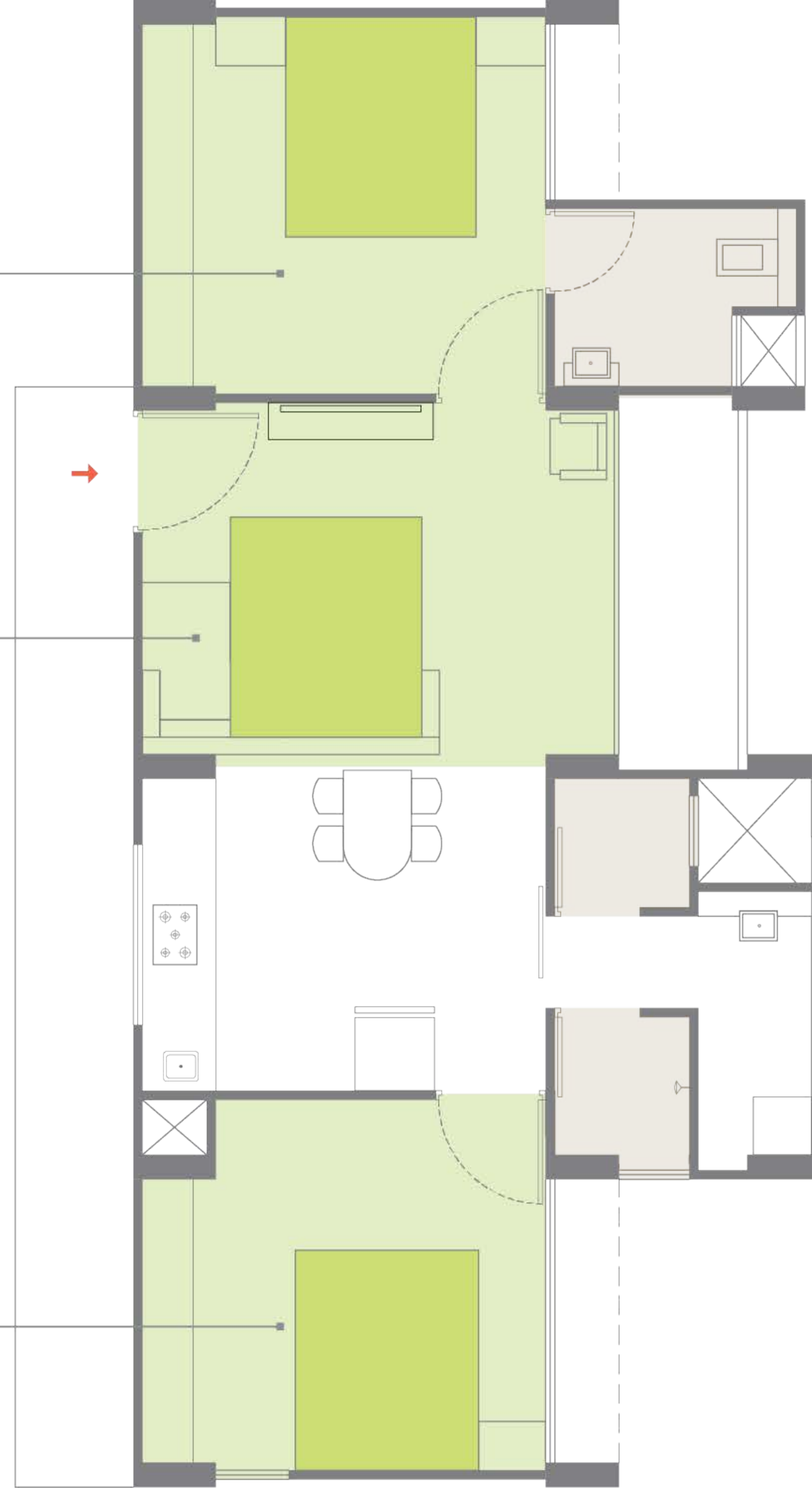
Spacious extended *Living Room* to host family & friends for food & fun.



Master Bedroom

Living Room - Provision for
Convertible sofa cum bed for
children

Grandparents' Bedroom





A line of birds flying across the sky.

Left section of the building facade.

Middle section of the building facade.

Right section of the building facade.

Ground floor retail area with various storefronts.

SKYi logo

Flower bed in the foreground.

Flower bed in the foreground.

Car in the foreground.



SKYi
CLUB









