







One acre of open green space







Clubhouse and multi purpose activity zone



Swimming pool

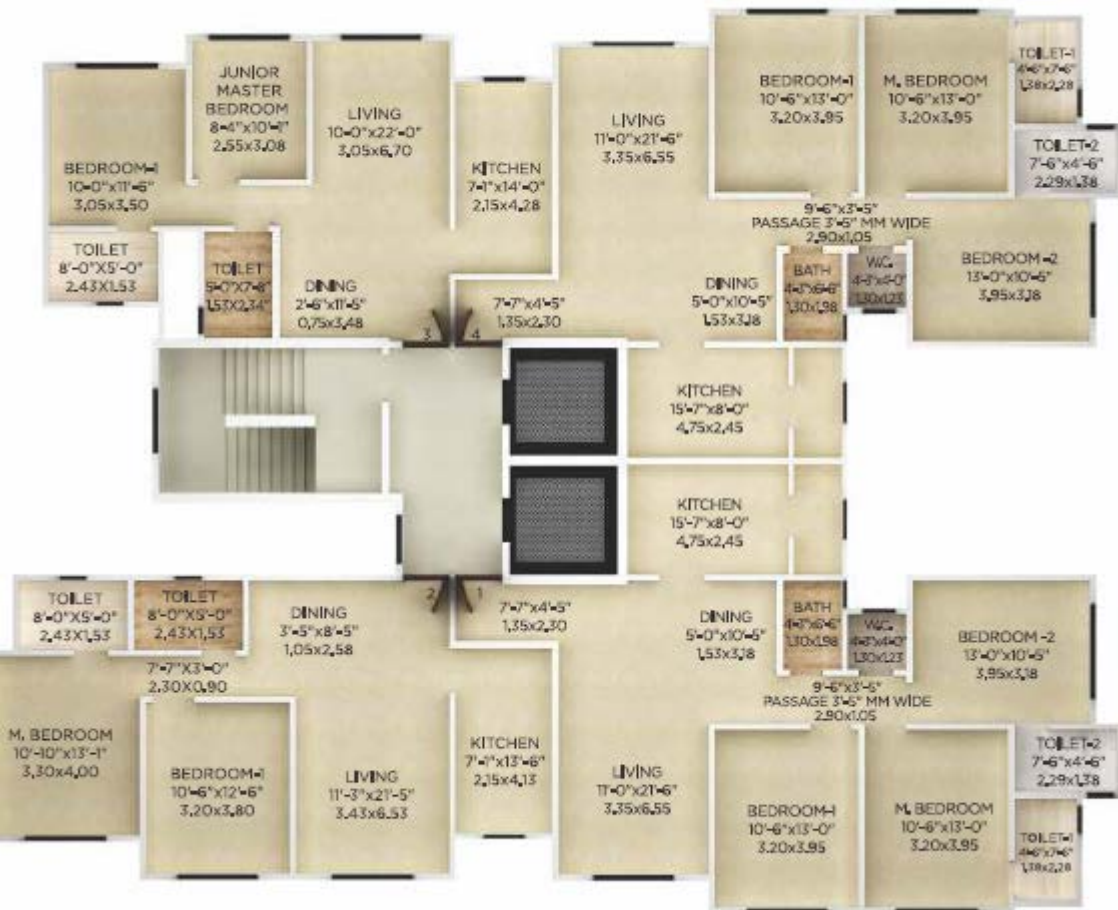


Barbeque area













JAIN VIJAY





Location Map: Jai Vijay, Vile Parle East



**LEGEND:**

1. ENTRY GUARDHOUSE
2. DRIVEWAY PLAZA
3. ROUNDABOUT SCULPTURE
4. UNIT ENTRY DROP-OFF
- 4b. ACCENT FEATURE WALL
5. ENTRY WATER FEATURE
6. DRIVEWAY TO BASEMENT
7. FIRE ENGINE ACCESS
8. MAIN LAP POOL WITH INFINITY WEIR
9. CHILDREN'S POOL
10. WATER CASCADE WITH SCULPTURE
11. CHILDREN'S PLAY AREA
12. WI-FI POOL TRELIS
13. OLD FOLKS CORNER
14. REFLEXOLOGY AREA
15. POOL DECK
16. CLOCK TOWER
17. MULTI PURPOSE ACTIVITY LAWN
18. CRICKET PITCH
19. CLUBHOUSE
20. JOGGING TRACK
21. SITTING CORNER
22. POCKET COURT
23. TABLE TENNIS
24. BOARD GAMES AREA
25. BILLIARD COURT
26. READING CORNER
27. GARDEN LOUNGE
28. TOT LOT
29. BASKETBALL HOOPS
30. YOUTH CORNER
31. AMPHITHEATRE
32. MOVABLE PLANTER ON CASTORS
33. FITNESS CORNER
34. BARBEQUE AREA
35. CUL DE SAC



# Kolte Patil Jai Vijay Apartments

## Price list

• TYPE	SIZE	PRICE (SQFT)	AMOUNT	BOOKING
• 2 BHK	1095	On Request	2.60 Crs*	10%
• 2 BHK	1105	On Request	On Request*	10%
• 2 BHK	1150	On Request	On Request*	10%
• 2 BHK	1165	On Request	On Request*	10%
• 2 BHK	1200	On Request	On Request*	10%
• 3 BHK	1425	On Request	3.50 Crs*	10%
• 3 BHK	1620	On Request	On Request*	10%

## 2BHK - 650 sq. ft.



1) Kitchen - 7'1" x 14' | 2) Dining area - 2'6" x 11'5" | 3) Living area - 10' x 22'

4) Passage - 3' wide | 5) Bedroom 1 - 8'4" x 10' 1" | 6) Bathroom 1 - 5' x 7'8"

7) Master Bedroom - 10' x 11'6" | 8) Master Bathroom - 8' x 5'