

ELEGANCE  
*is* AN EXPERIENCE



thoughttrains



1 BHK ENRICHED LIFESTYLE HOMES

Site Add.: Plot No. 795, Dahanukar Wadi, Gandhi Nagar, Off Link Road, Behind Symphony Bldg., Kandivali (West), Mumbai - 400 067.  
Corporate Office: Ruparel Iris, Level 1 & 2, Next to Agmark Laboratory, Senapati Bapat Marg, Matunga Road (West), Mumbai - 400 016.  
Tel. No.: 022 2439 1100 | Email: info@ruparel.in.

NOTE: All specifications, drawings, amenities, facilities, parameters etc., shown in this brochure are subject to change as per the approval from the respective authorities. The final discretion remains with the developers.



# QUALITY *Crafts* CLASS

When quality starts speaking the language of class, lifestyle rises to a whole new level of experiences. Everyone deserves to live a life enriched with best things of the world. Everyone desires a lifestyle that gives a true feeling of comfort, convenience, class which they belong to.

Now here's a life taking shape in the heart of Kandivali West created by Ruparel Realty, the renowned house of iconic landmarks, developing signature-class qualitative projects across Mumbai and its suburbs. A life that upgrades the living of its residents while giving them a lifestyle enriched with all, what they have always desired.

**Welcome to Ruparel Elara. A life where elegance is an experience that stays forever in hearts.**

# ELEGANT HOMES, ENRICHED CLASS, ENHANCED LIFESTYLE

*Discover*

LIFE MEETING MORE THAN  
WHAT YOU DESIRED



## Project Features

- A marvellous 22 storeyed high-rise tower
- Conveniently located at Kandivali West
- Offering 1 BHK enriched lifestyle homes
- Smartly planned living spaces with world-class fixtures & fitments
- Elegant lifestyle amenities on terrace level



# KANDIVALI-WEST

*A World*

WITH BEST ACCESSIBILITY,  
SUPREME CONNECTIVITY AND  
DOORSTEP CONVENIENCES

## PROMINENT LANDMARKS WITHIN REACH



### HEALTHCARE

Mangal Murti Hospital - 10 mins  
Zenith Hospital - 10 mins



### SCHOOLS & COLLEGES

Atharva College of Engineering - 5 mins  
Ryan International School - 7 mins  
Witty International School - 15 mins  
KES Shroff College - 10 mins



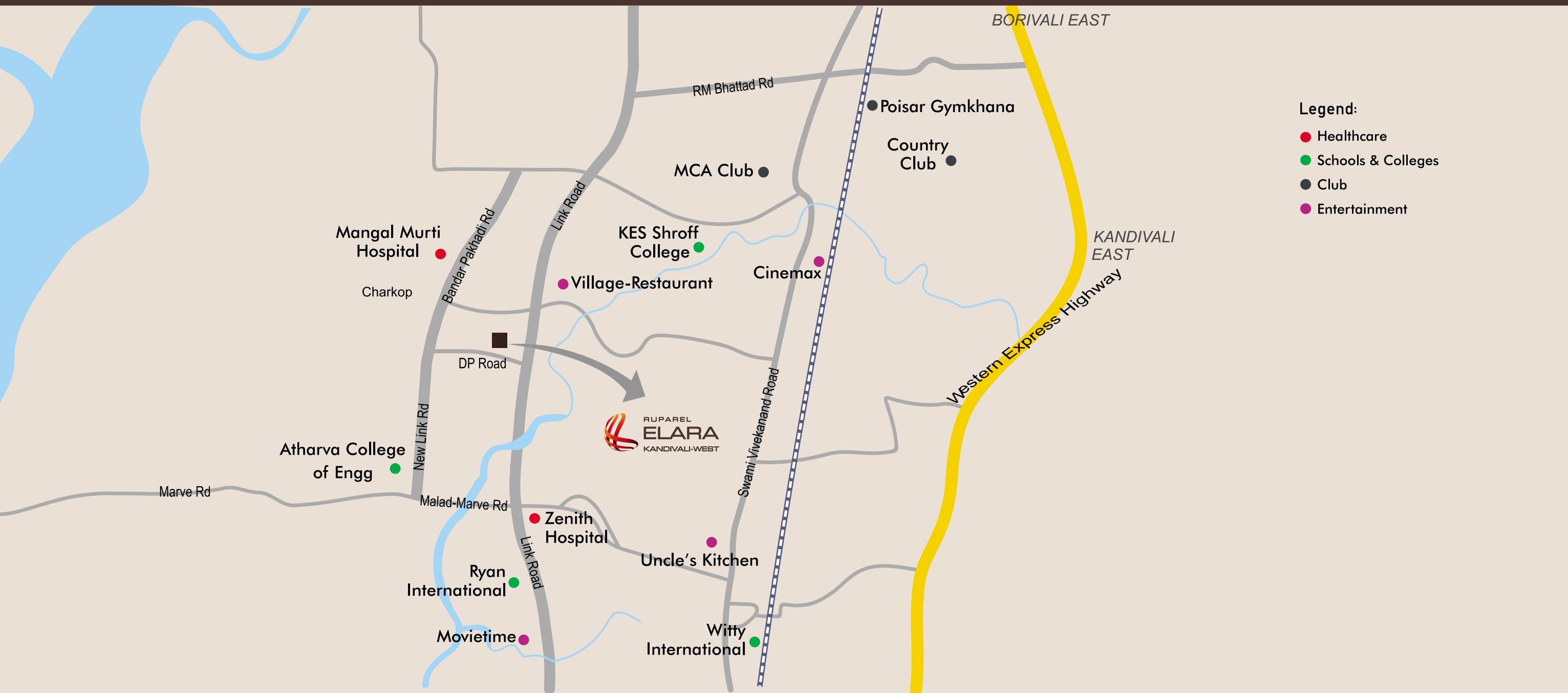
### ENTERTAINMENT

Movietime - 15 mins  
Uncle's Kitchen - 12 mins  
The Village Restaurant - 8 mins  
Cinemax - 10 mins



### INFRASTRUCTURE

Western Express Highway - 10 mins  
Kandivali Railway Station - 6 mins  
Proposed Metro Station - 3 Mins  
SV Road - 5 mins





# SPACES CRAFTED WITH PERFECTION

*To take*

YOUR LIFESTYLE AT  
A WHOLE NEW LEVEL

## Apartment Features

- Elegant living spaces with vitrified flooring
- Spacious bedroom with sliding windows
- Modular kitchen with branded fittings
- Anti-skid tiled bathroom with branded sanitary ware
- Video-door phone in each apartment

# DISCOVER YOUR BEST REASON OF RELAXATION & HAPPINESS

*At well-chosen*  
ZONES ON GROUND  
& THE SKY



## Modern Lifestyle Amenities

- Hi-tech gymnasium with modern equipment
- Indoor games arena with Table Tennis, Snooker, Carrom, Chess & Board Games
- Terrace garden & senior citizen sitting lounges





# LIVE IN THE PERFECT HARMONY OF ELEGANCE AND SAFETY

*In your world*

OF UPGRADED LIFESTYLE

## **Advanced Tower Features & Facilities**

- Advanced integrated fire safety
- 24x7 CCTV surveillance and gated security
- Stack car parking space
- Elegant lift lobbies with high-speed elevators

TYPICAL FLOOR PLAN





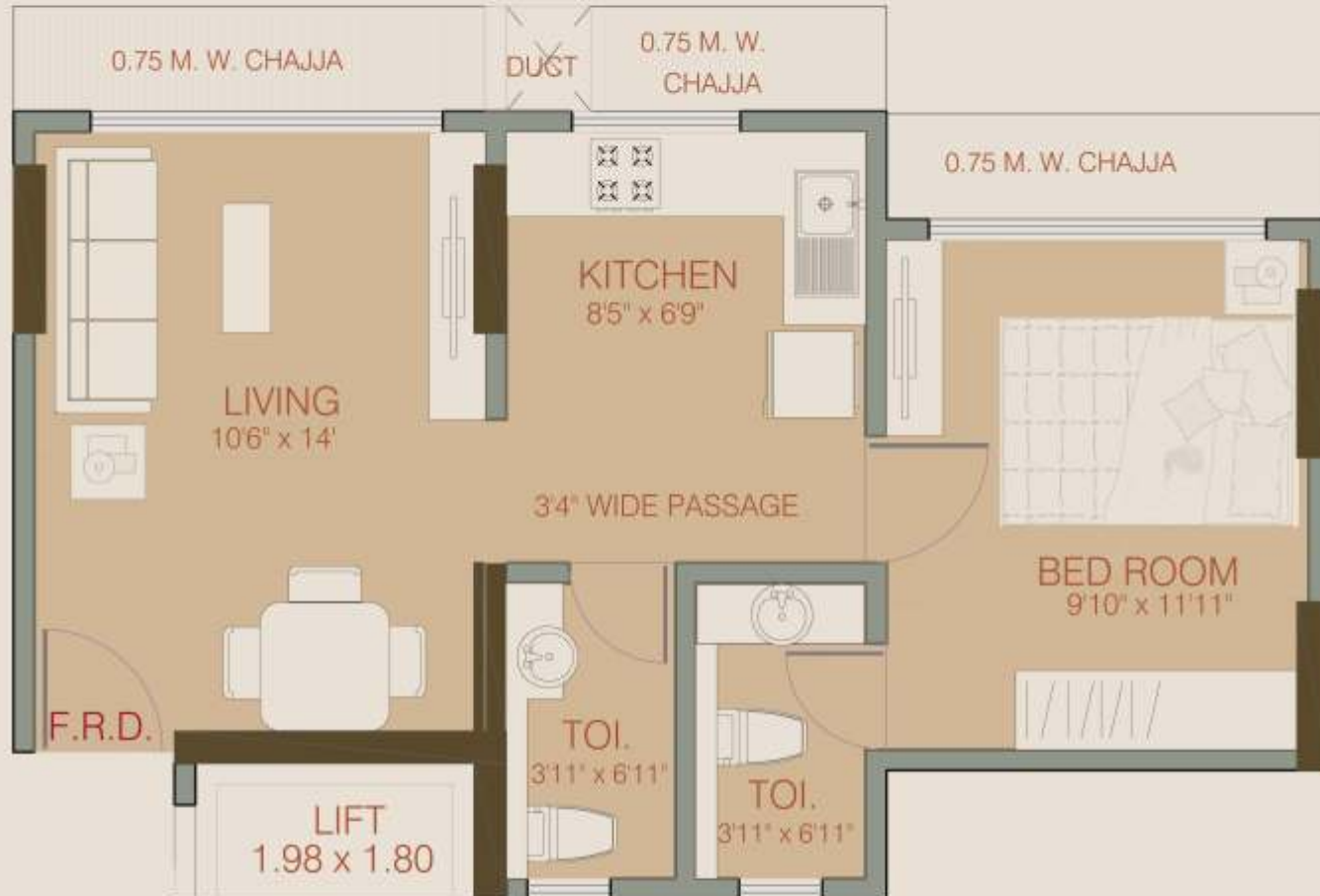
UNIT PLAN - FLAT NO. 1



UNIT PLAN - FLAT NO. 2 & 3



UNIT PLAN - FLAT NO. 4



*The icon of*  
**SUPERLATIVE  
LIFESTYLE**

Established in the year 2000, Ruparel Realty, has been constructing numerous Residential & Commercial marvels that have carved a unique niche in the world of construction. The group is currently constructing 2 million sq. ft. in the prime lands of Mumbai Metropolitan Region with 2.5 lac sq. ft. delivered in Navi Mumbai Region.

The Group works with the top names in Real Estate like JW Consultants, Aakar Architects & Consultants, Eskayem Consultants, ACC and Skyway RMC to ensure timely completion of projects with no compromise in quality standards with latest construction technologies.

Since its inception the company has launched 9 projects, with notable developments like Ruparel Ariana, Ruparel Iris, Ruparel Orion and Sea Palace to mention a few. In the past 18 months, the group has acquired 20 acre land in Kandivali west, 5 acre land in Parel and other developments in Western and Central suburbs. With its mass presence across the most desired areas in Mumbai, the group is on the road of substantial success.

The group's overwhelming success is marked by the finest financial institutions like L&T Finance, ICICI Bank, Axis Bank, HDFC and State Bank of India.

**ONGOING PROJECTS**

- Ruparel Ariana, Parel
- Ruparel Iris, Matunga
- Ruparel Orion, Chembur
- Ruparel Sea Palace, Palm Beach Road
- Ruparel Jewel, Parel

**UPCOMING PROJECTS**

- Ruparel Solitaire, Kurla (E)
- Ruparel Mirage, Bandra
- Ruparel Grandeur, Matunga
- Other projects in Tilak Nagar, Mulund and Ghatkopar

**COMPLETED PROJECTS**

- Shanti Park, Nerul
- Mangaldeep, Belapur
- Ruparel Gardens, Nerul
- Sea Homes, Palm Beach Road

