





























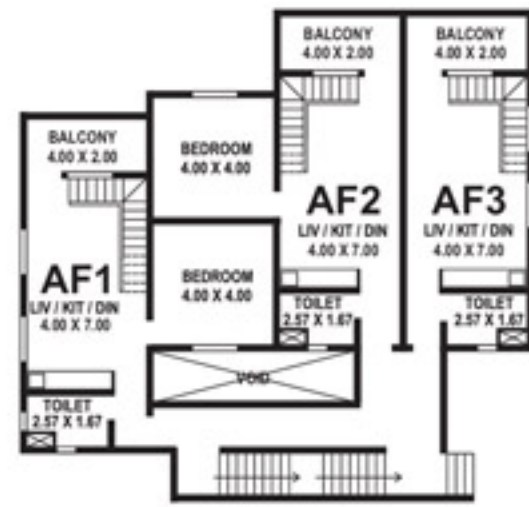


BLOCK - A

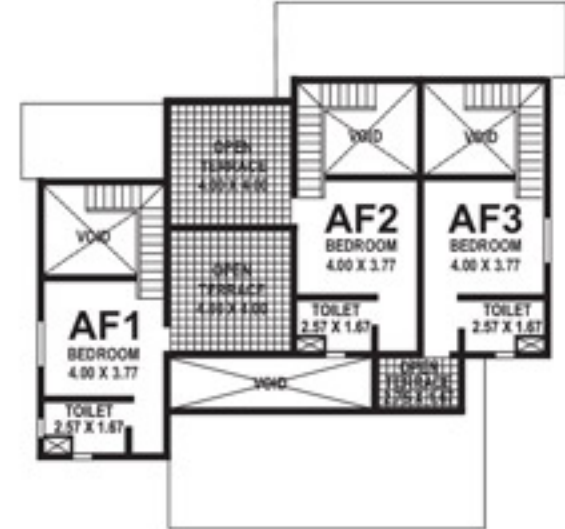


- SODIEM
- MORJIM
- MAPUSA

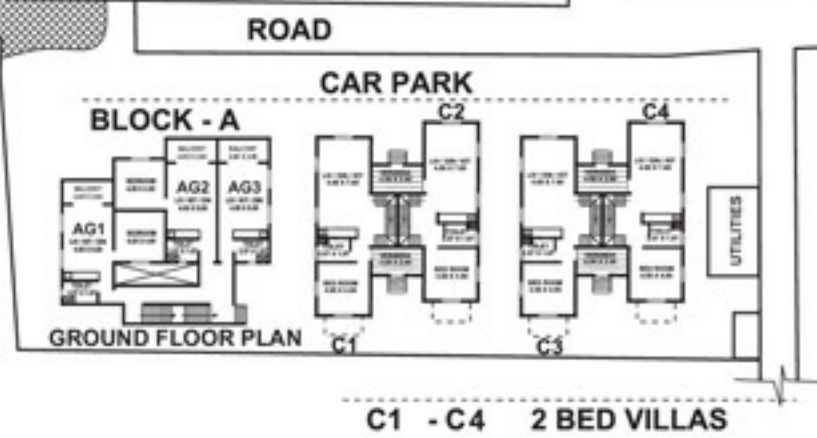
- SIOLIM MARKET AREA
- ST. ANTHONY'S CHURCH
- ARPORA



FIRST FLOOR PLAN



SECOND FLOOR PLAN

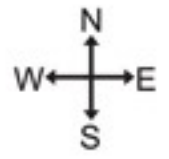


BLOCK - A

CAR PARK

C1 - C4 2 BED VILLAS

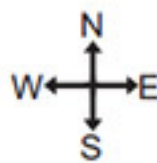
Apartment	Type	Apartment area in sq.m.	Open Terrace area in sq.m.
Ground Floor			
AG1	Single bedroom	70.00	----
AG2	Single bedroom	70.00	----
AG3	Studio	50.00	----
First Floor			
AF1	Duplex Double bedroom	111.00	16.00
AF2	Duplex Double bedroom	111.00	16.00
AF3	Duplex Single bedroom	91.00	5.50



Riviera Constructions Pvt. Ltd.
 Site Office in Arpora - Dornic : 9850502410, Alvito : 9822348888
 E-mail: info@rivieragoa.com Website: www.rivieragoa.com

Riviera Sapphire
 in Siolim, North Goa

We reserve the right to do minor changes in the plan.



- SODIEM
- MORJIM
- MAPUSA



SITE PLAN



Riviera Constructions Pvt. Ltd.
Site Office in Arpora - Domic : 9850502410, Alvito : 9822348888
E-mail: info@rivieragoa.com Website: www.rivieragoa.com

Riviera Sapphire
in Siolim, North Goa



TOILET IN B004, B004, B503 2.40 X 1.67M
 OTHER TOILETS IN BLOCK B 2.57 X 1.67M
 TOILETS IN VILLAS 2.57 X 1.87M

**SITE PLAN
 PHASE II**



FIRST FLOOR PLAN

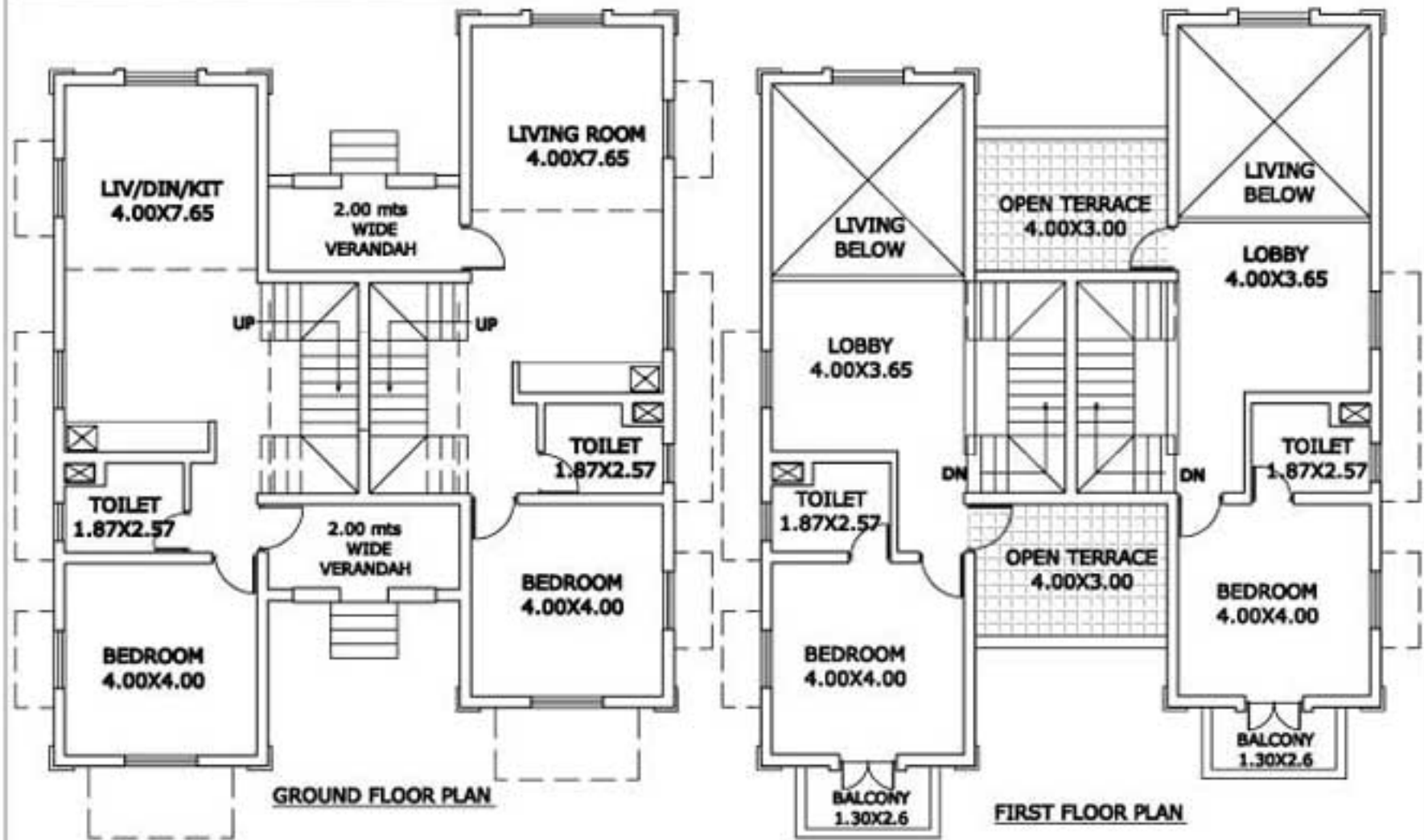


SECOND FLOOR PLAN

BLOCK - B



2 BEDROOM VILLA TYPE A



RIVIERA SAPPHIRE
SIOLIM