























SPECIFICATION

| BEDROOMS / LIVING & DINING / LOBBY & PASSAGES | |
|---|---|
| Flooring | Mix Of Designer Mosaic / Tiles / Wooden |
| Walls | Plastic Emulsion Paint Finish |
| Ceiling | False Ceiling With Coves & Cornices |
| Woodwork | External: Veneer Finish; Internal: Laminate |
| Window | Anodised Aluminum With Toughened Glass |
| Door | Flush Doors With Veneer Finish Both Sides |
| Door Hardware | Dorset / Dorma |

| TOILET | |
|----------------------------|---|
| Floor | Tiles |
| Walls | Tiles |
| Ceiling | T-Grid False Ceiling |
| Woodwork | External & Internal Laminate. |
| Fittings & Fixtures | Shower Partitions, Vanities, Exhaust Fan, Towel Rail, Ring, Toilet Paper Holder, Robe Hook Of Standard Make |
| Sanitary Ware/ CP Fittings | Kohler / Duravit / Jaguar or Equivalent |

| KITCHEN | |
|-----------------|------------------------------------|
| Modular Kitchen | Hettich or Equivalent. |
| Floor | Tiles |
| Walls | Tiles |
| Cabinet | External & Internal Laminate |
| Counter | Marble / Granite / Synthetic Stone |

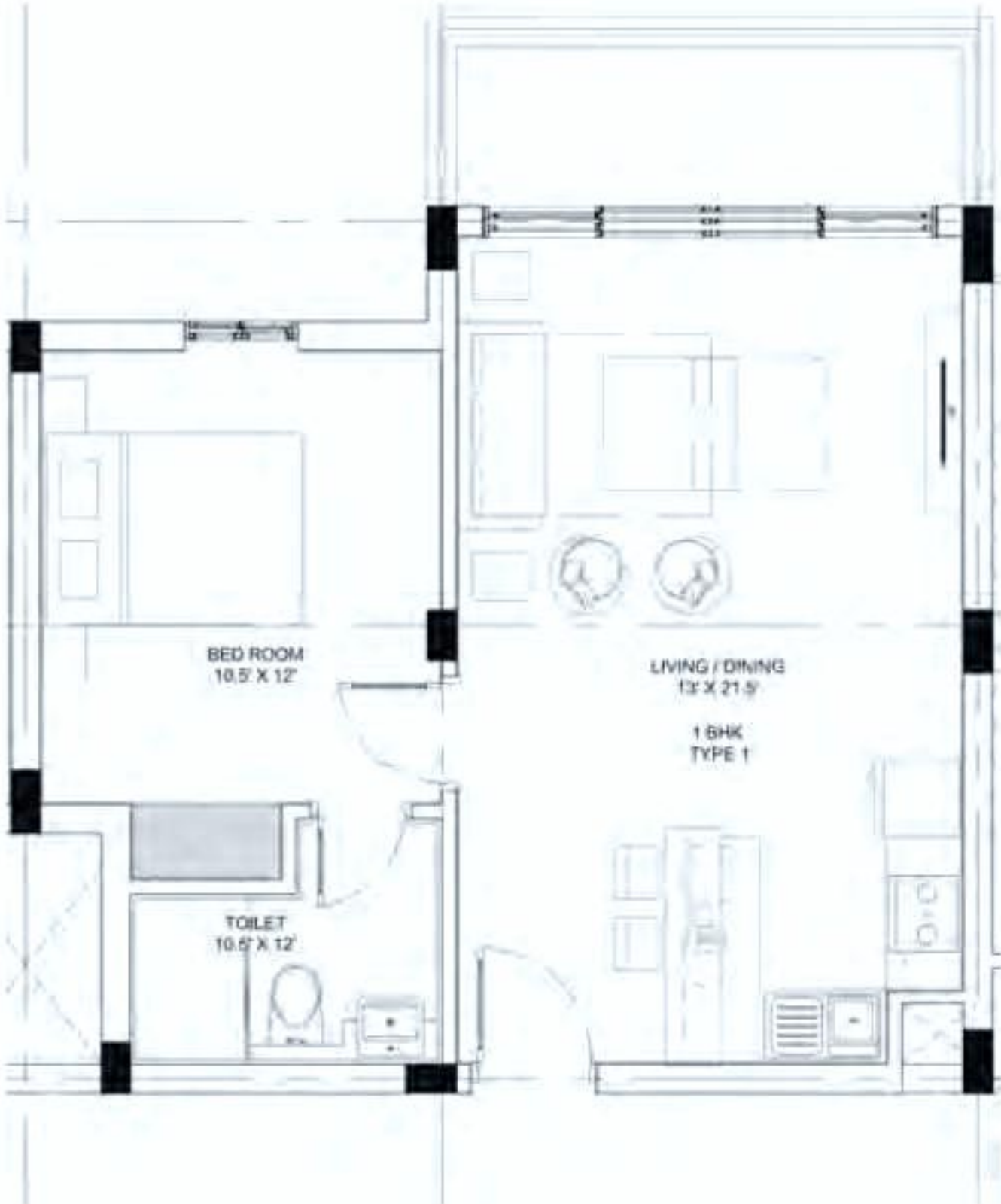
Disclaimer —

- All floor plans, master plan, elevations, interior images are artist renditions & not to scale.
- Furniture layout shown in the brochure is indicative of how the unit may be used.
- No landscape amenities or accessories shown in the visuals are provided with the apartments.
- All floor plans, layout plans, site plans, specifications, dimension, design, measurement and location are indicative and are subject to change as may be decided by the Company or Competent Authority.
- Revision, Alteration, Modification, Addition, Deletion, Substitution or Recast if any may be necessary during construction.

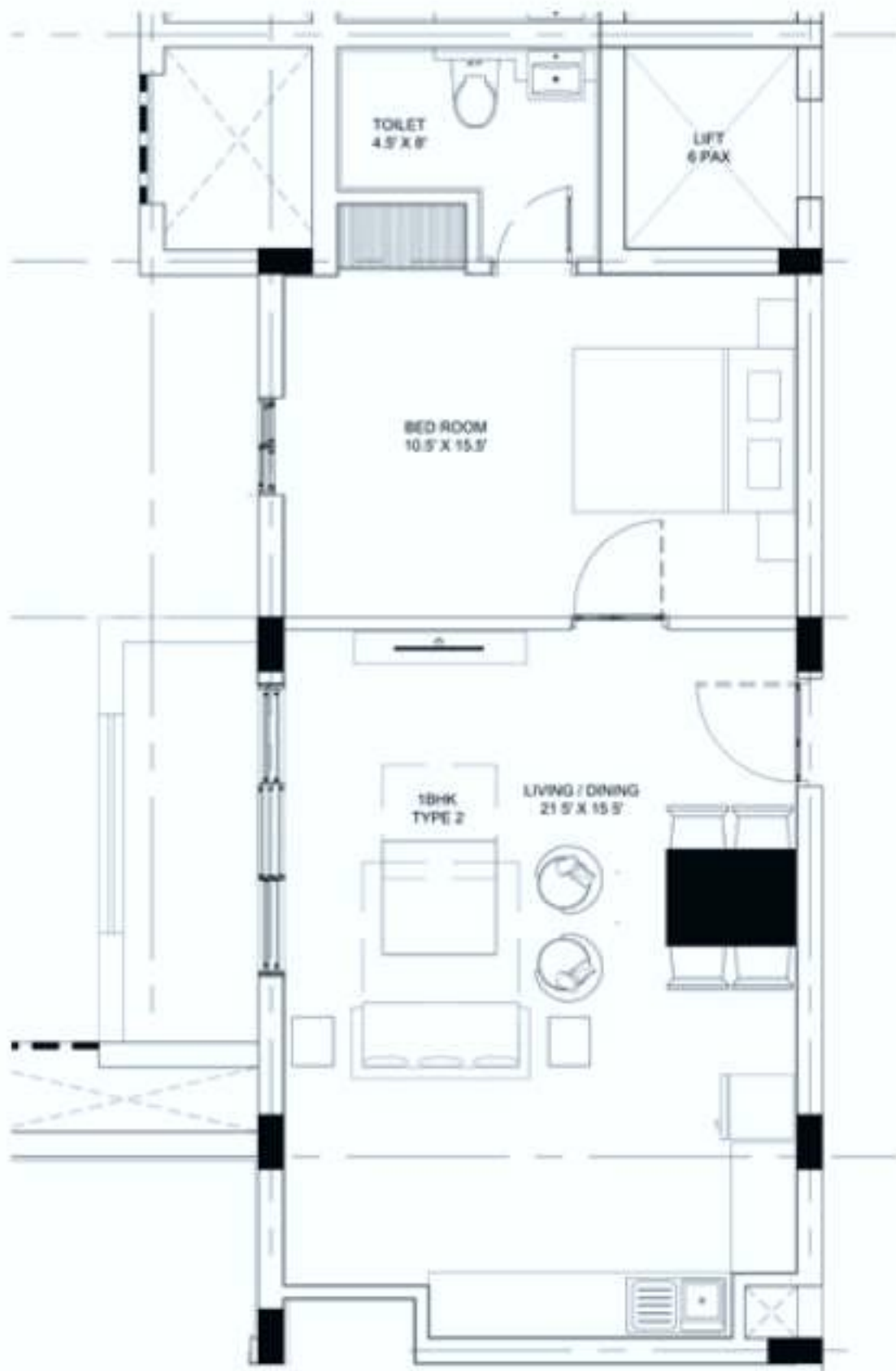
Note: 1 Sq. Meter = 10.764 Sq. Feet



1 BEDROOM | TYPE 1 | 847 SQ.FT.

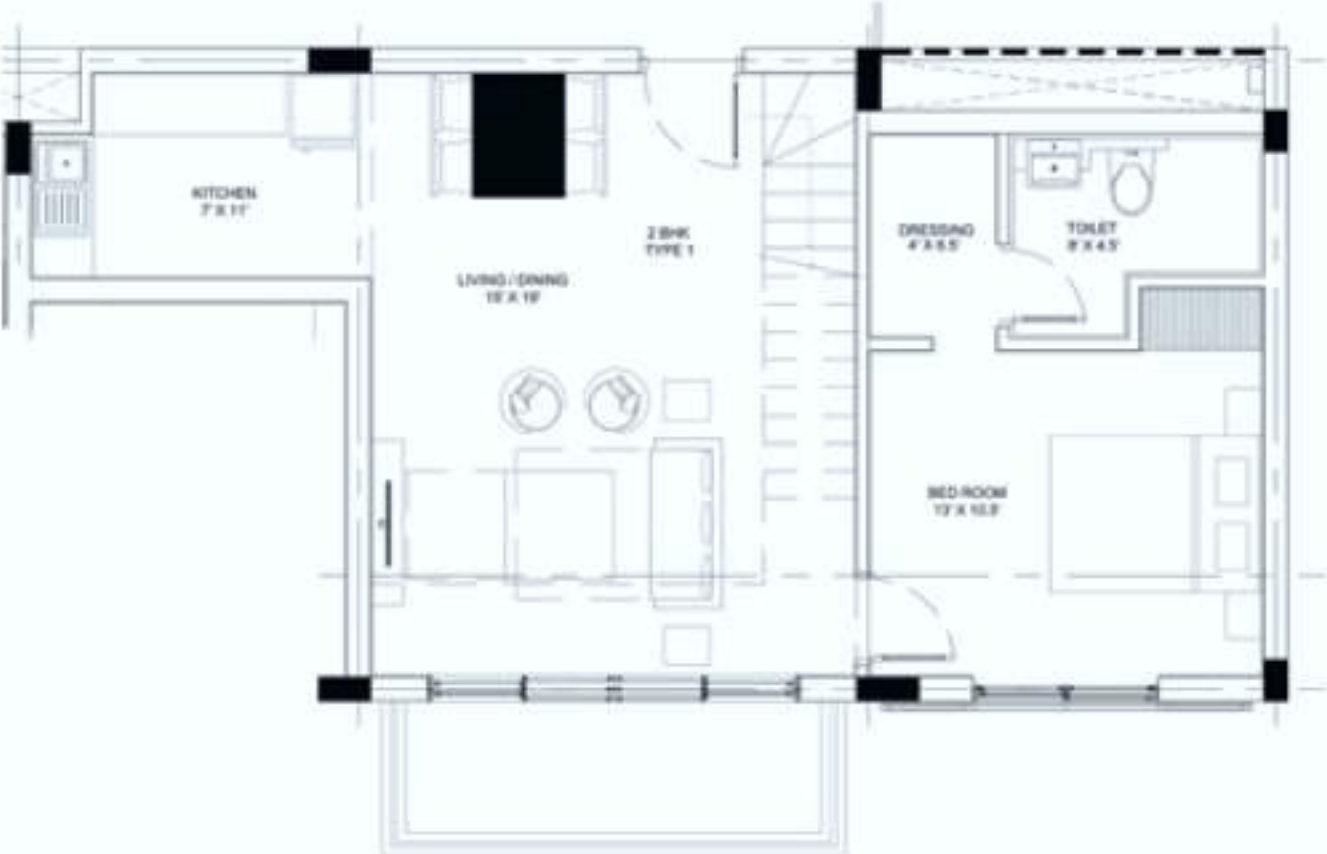


1 BEDROOM | TYPE 2 | 973 SQ.FT.

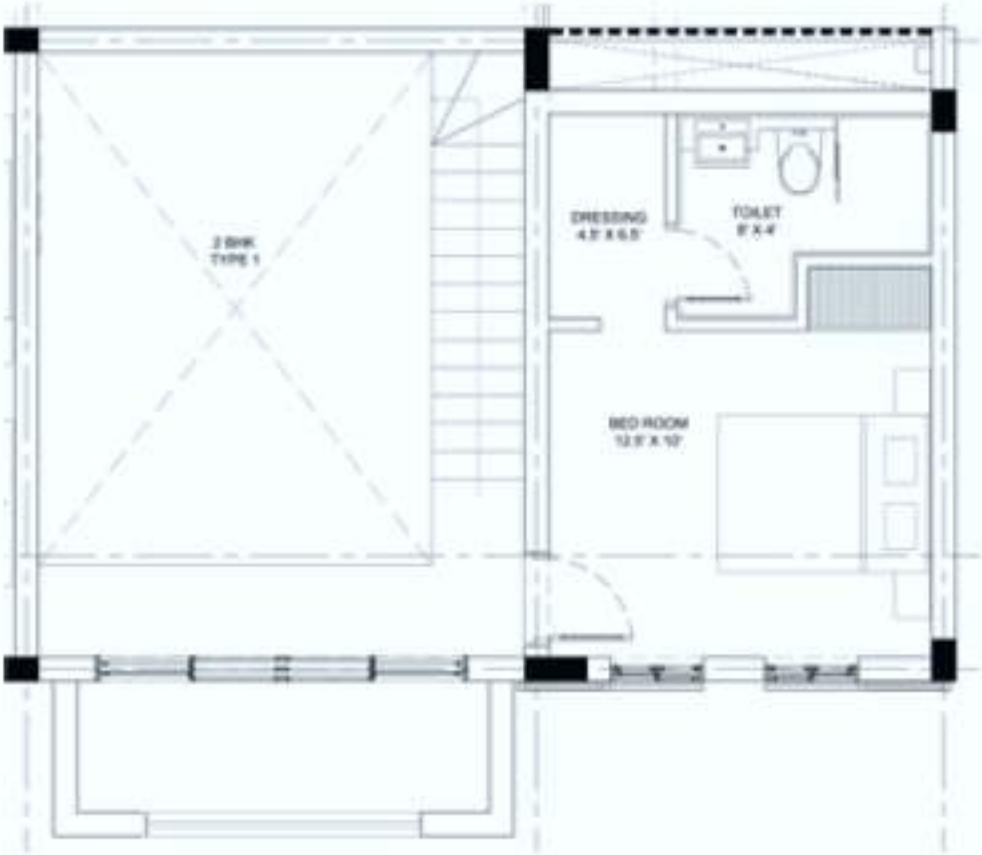


2 BEDROOM | TYPE 1 - DUPLEX | 1459 SQ.FT.

Lower floor plan

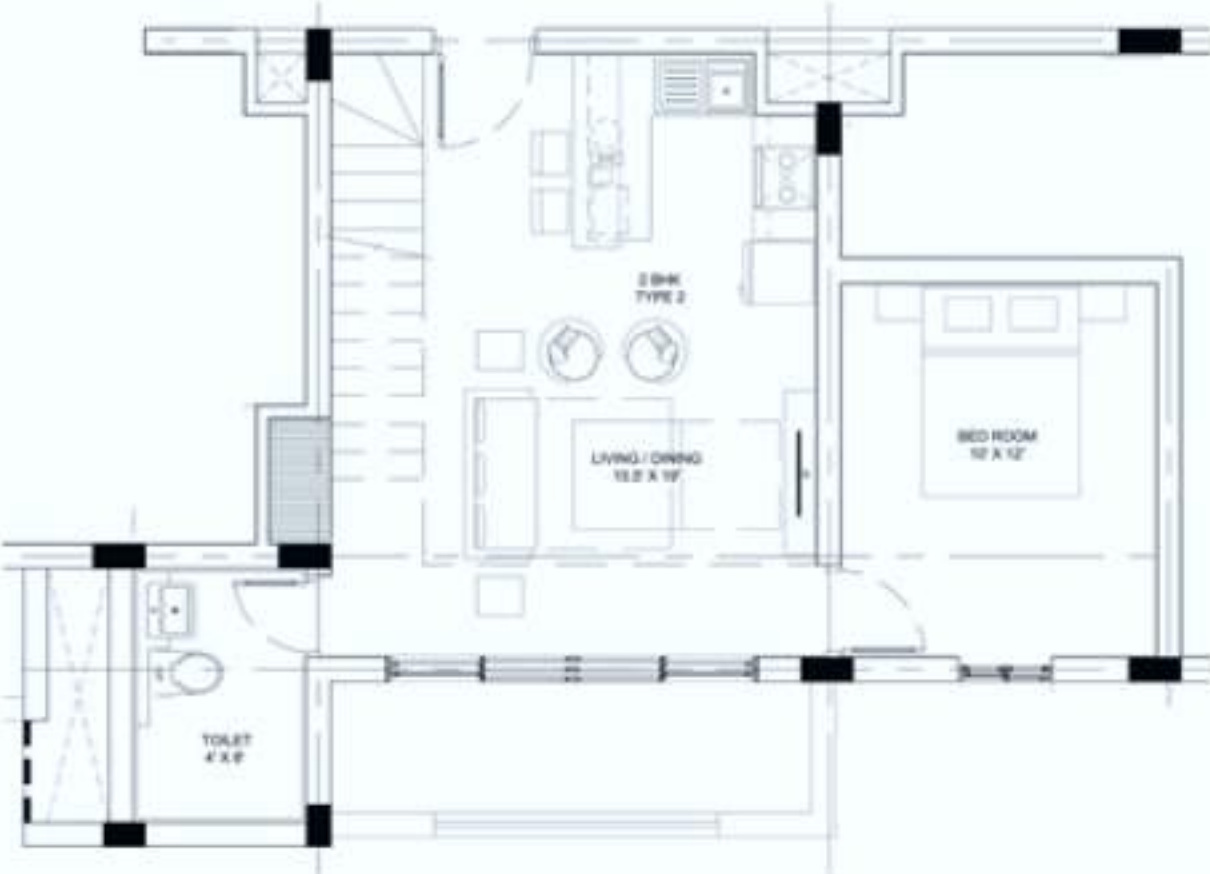


Upper floor plan

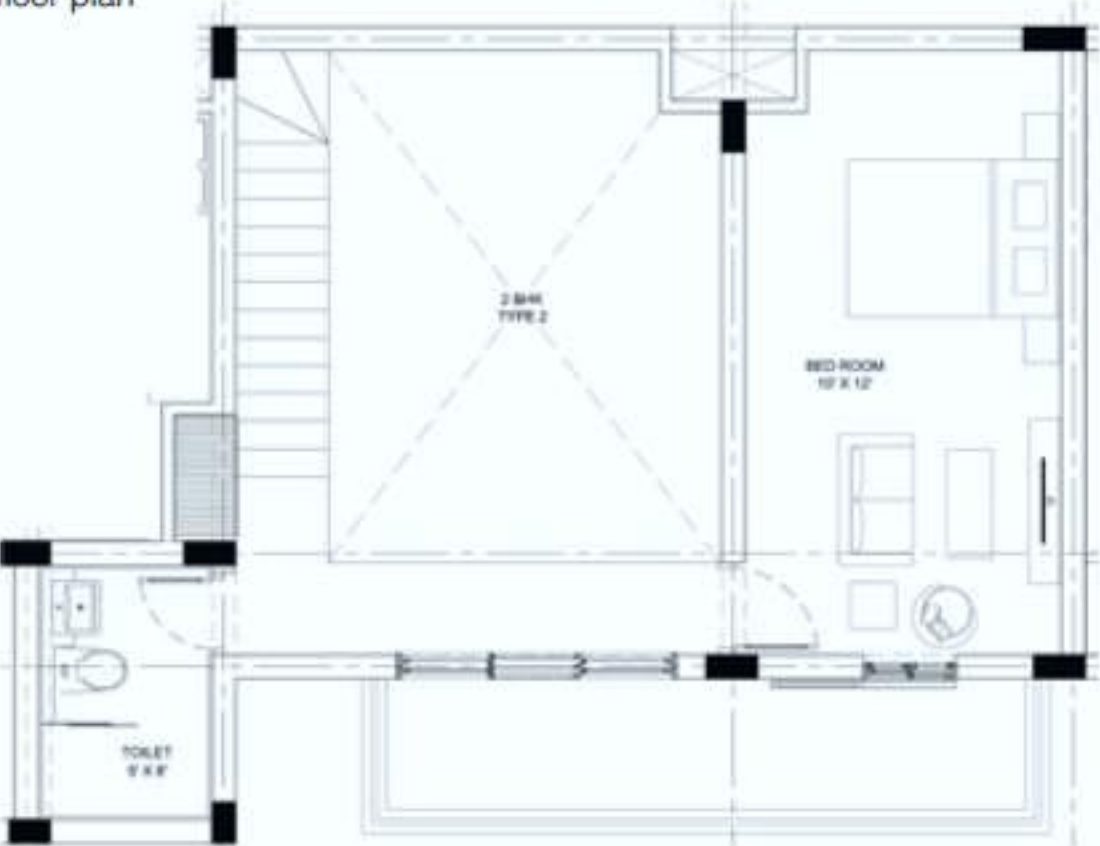


2 BEDROOM | TYPE 2 - DUPLEX | 1459 SQ.FT.

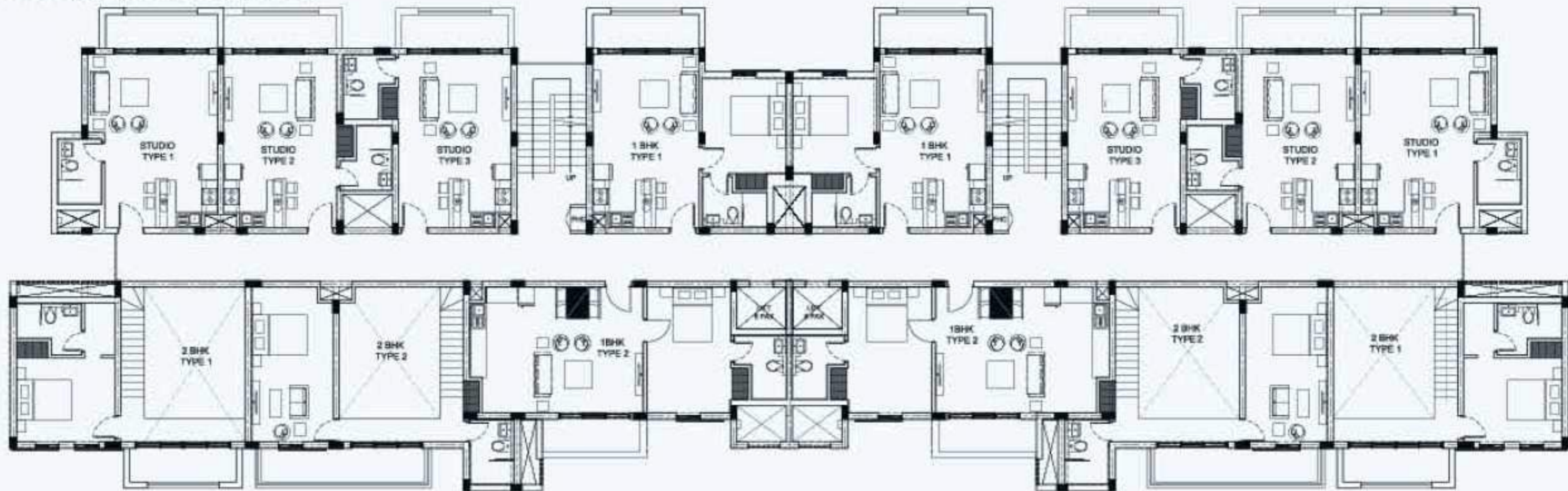
Lower floor plan



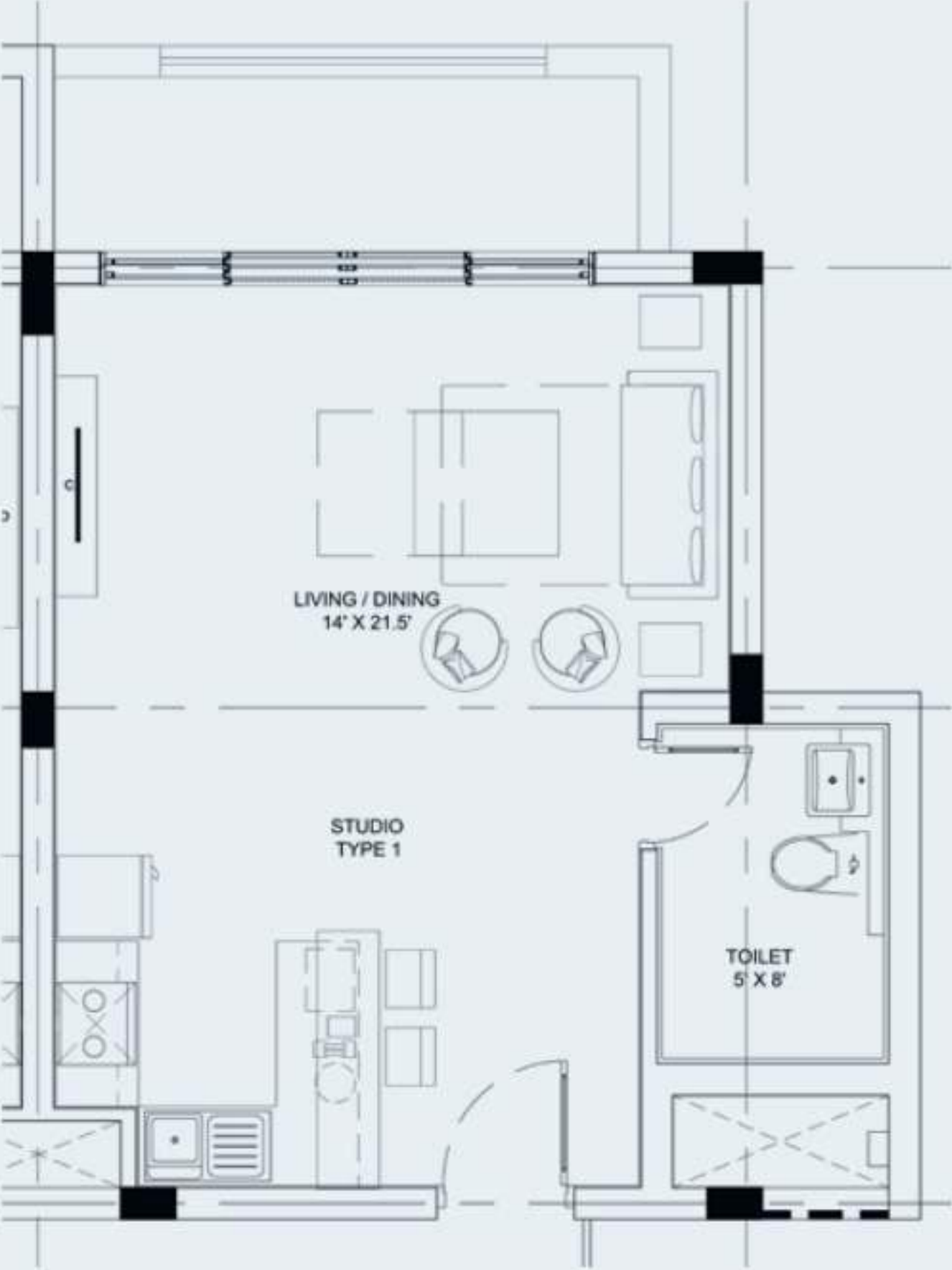
Upper floor plan



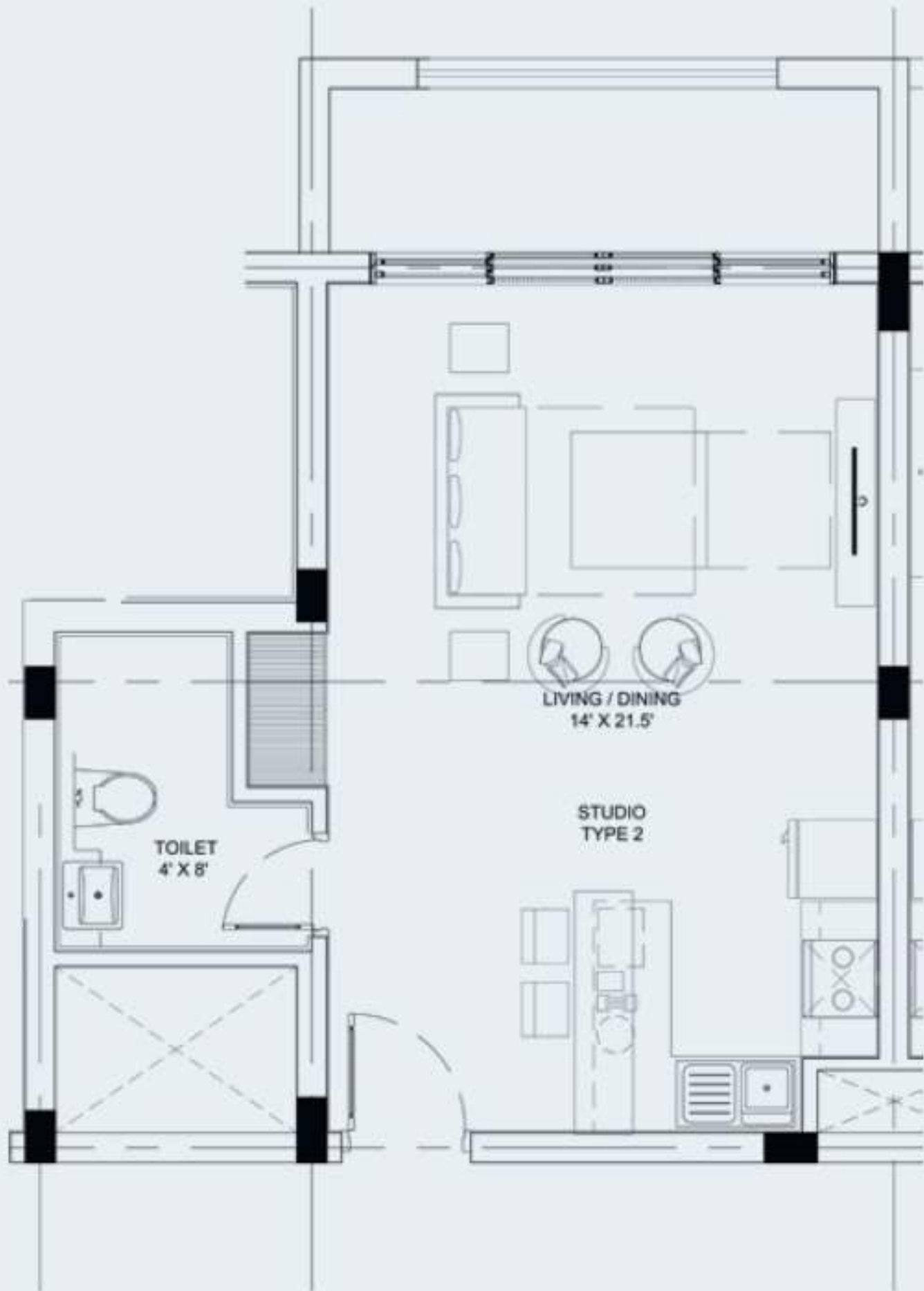
FOURTH FLOOR PLAN



STUDIO | TYPE 1 | 658 SQ.FT.



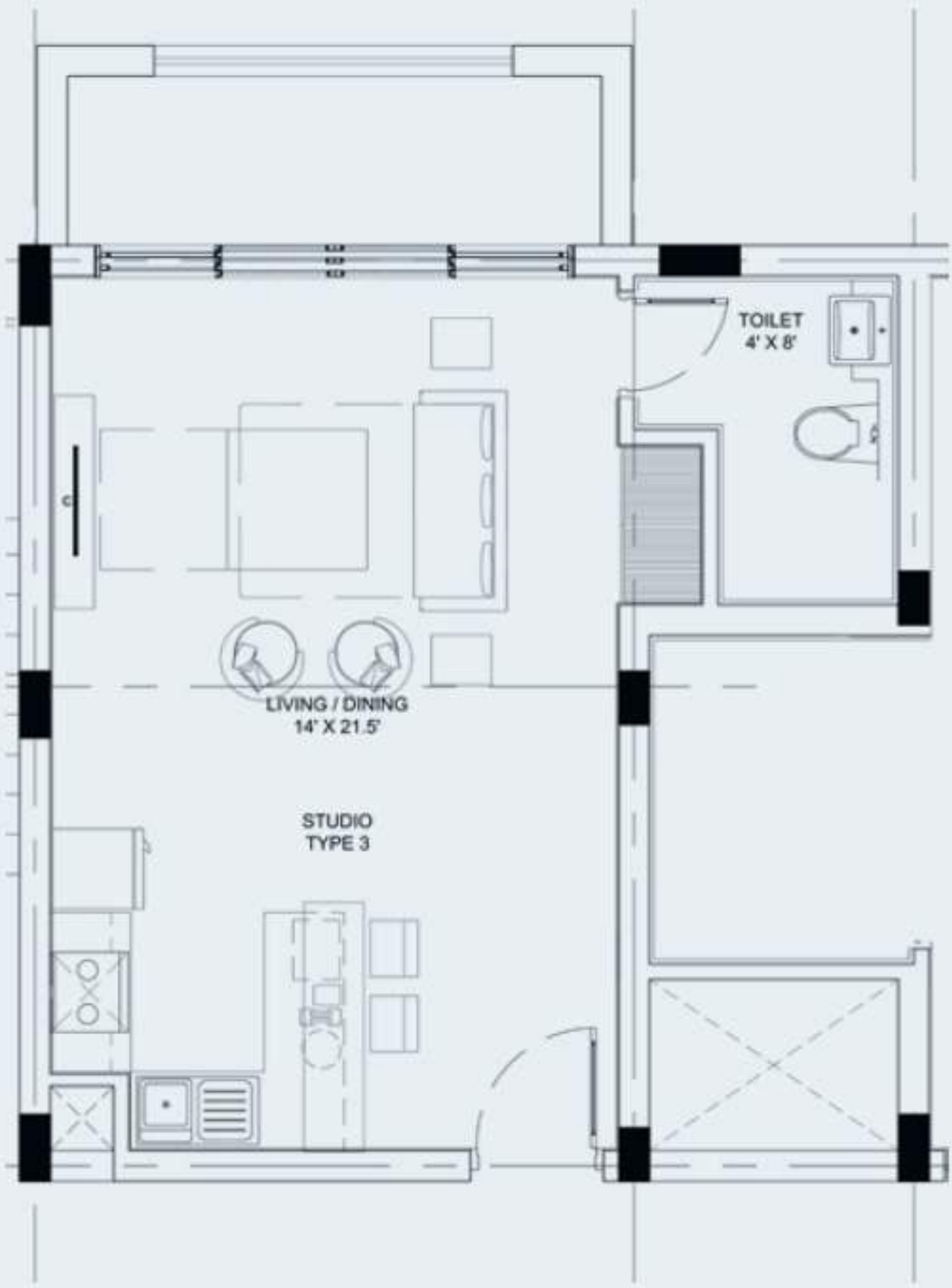
STUDIO | TYPE 2 | 667 SQ.FT.



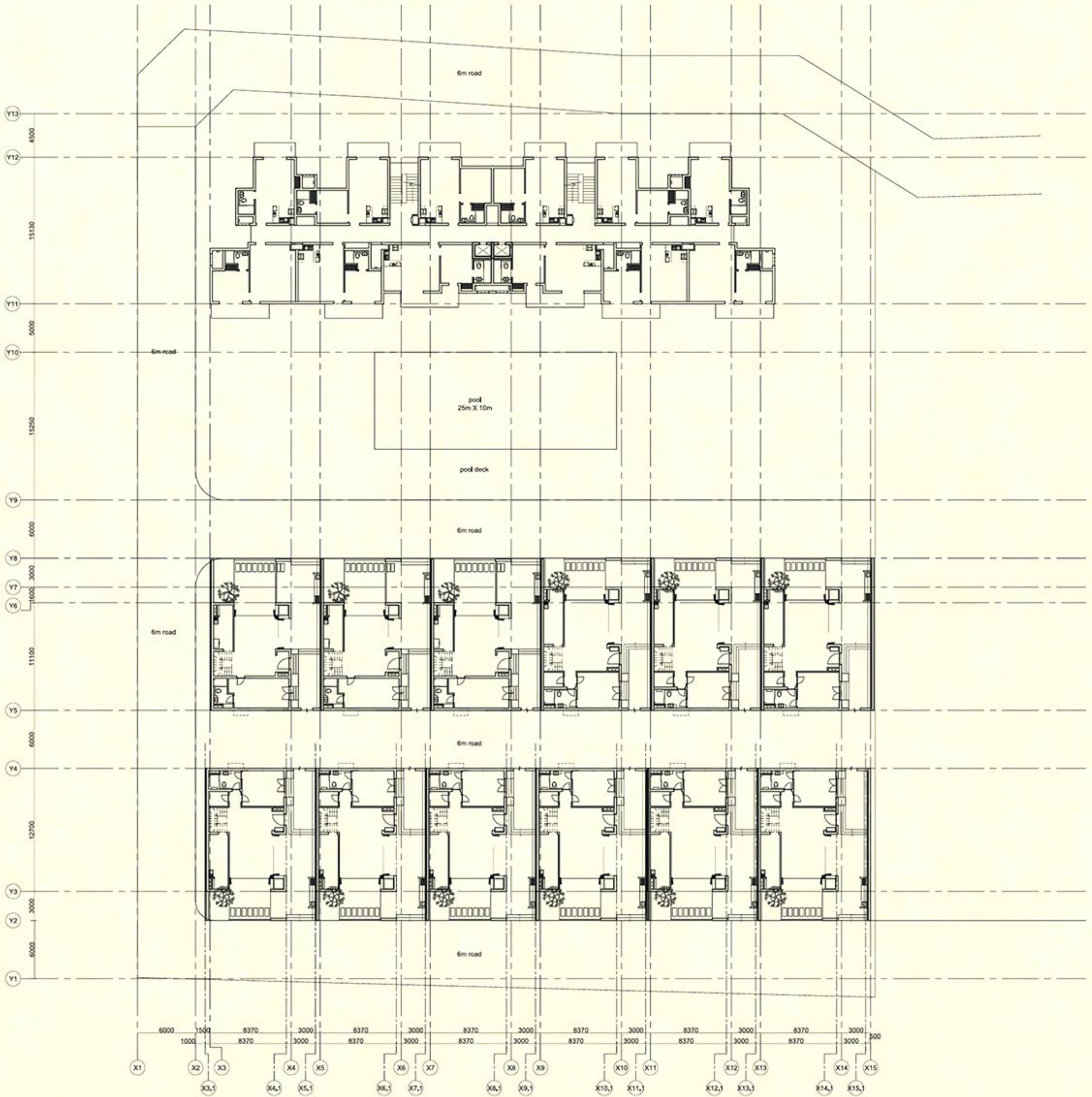




STUDIO | TYPE 3 | 676 SQ.FT.



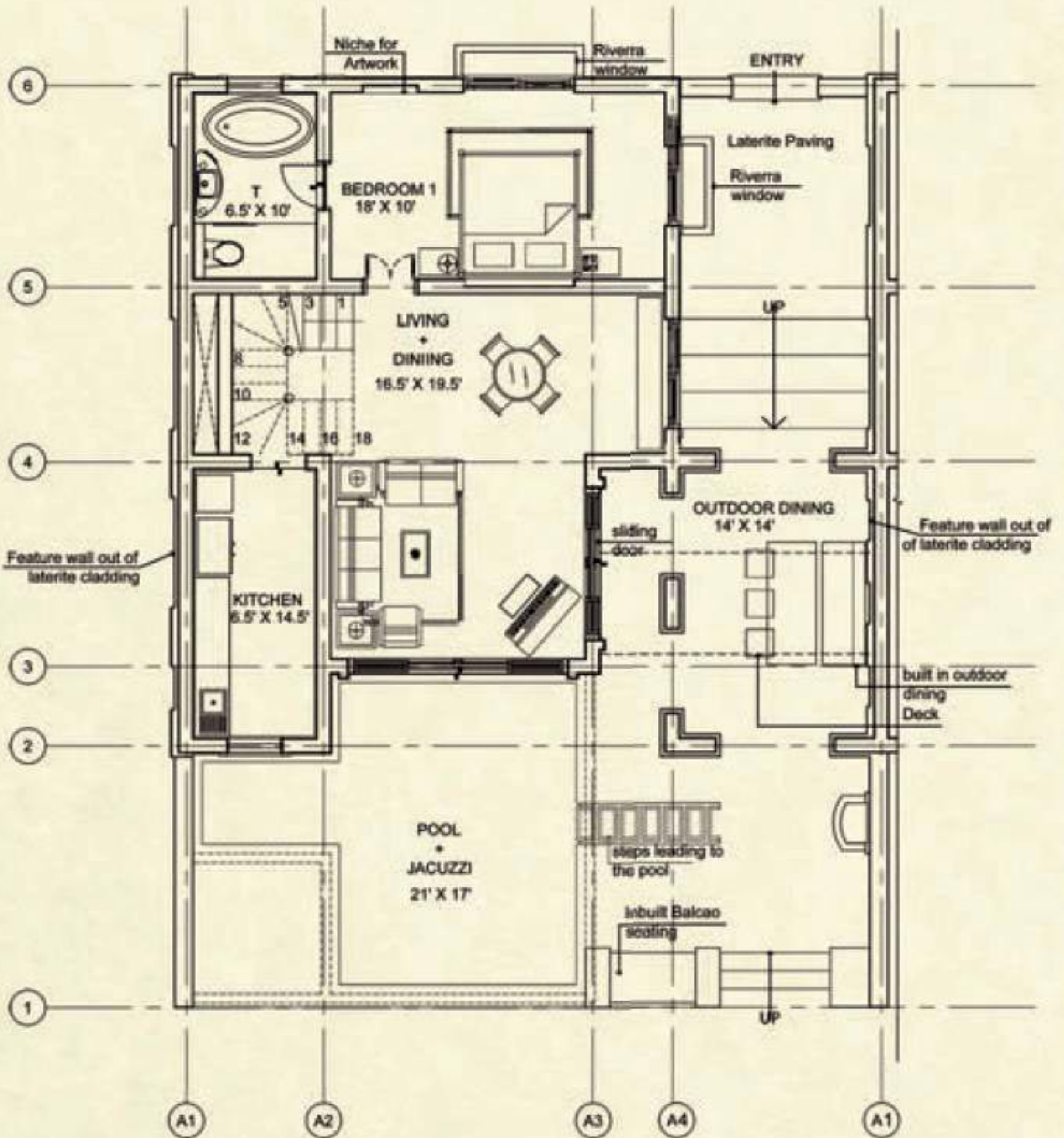
OVERALL SITE PLAN

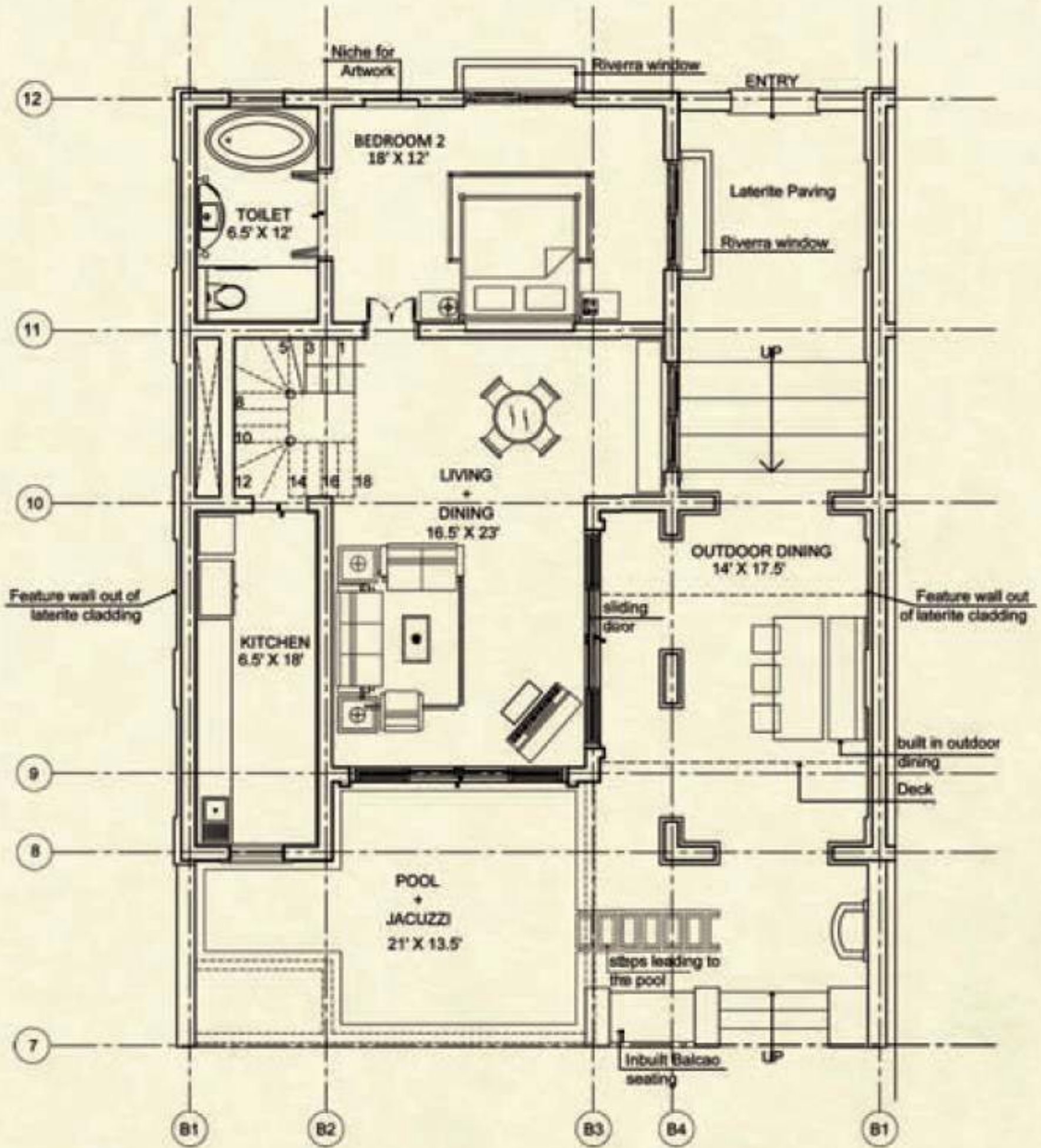


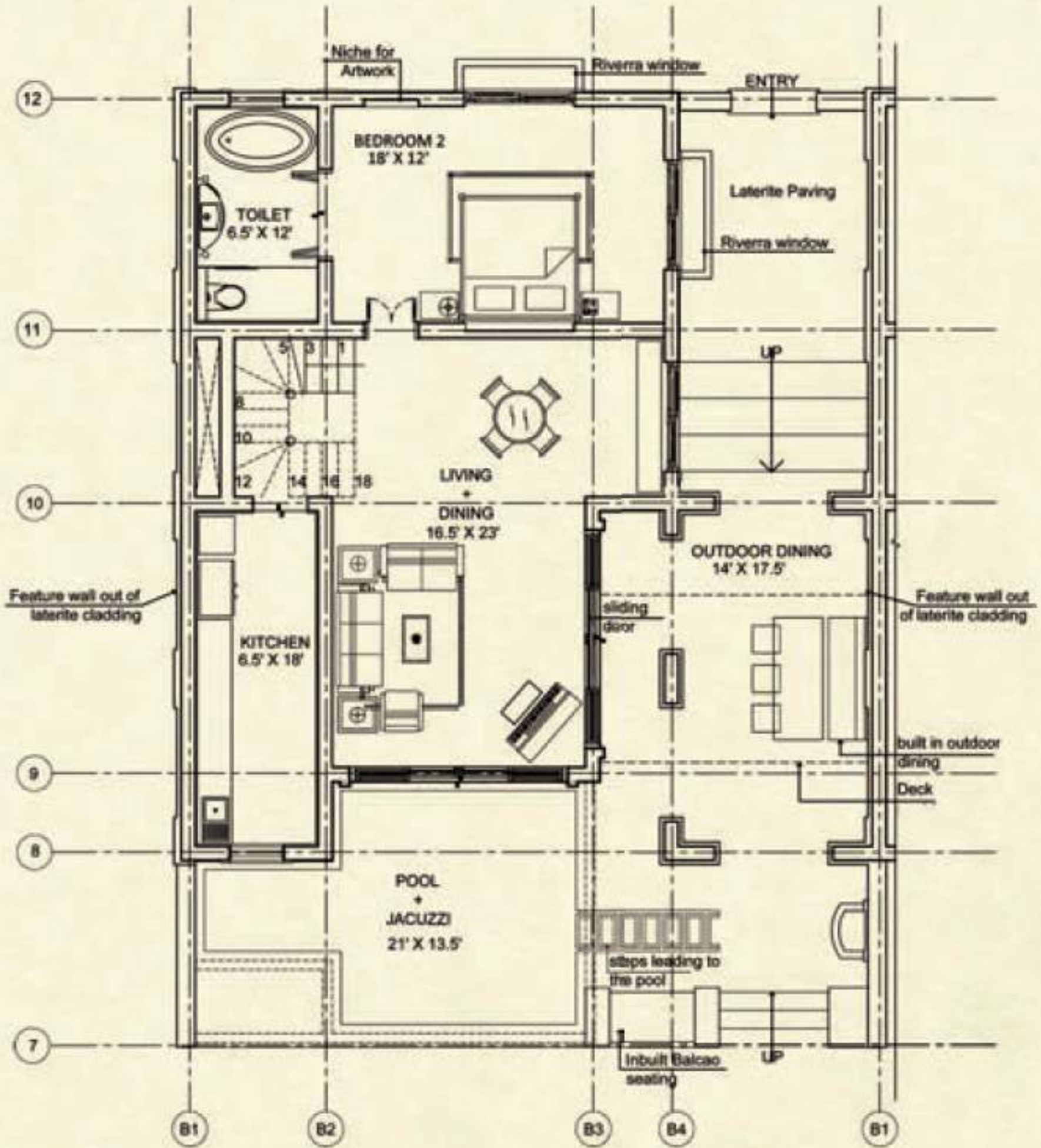












Malhan
Sino do Ouro

Chopdem
Fish Market

Ganaraj Bar
and Resteraunt

Prernem Agarwada Moveljim

Sagrados

gotmydeal.com

.com



