

Goa Medical College	Approx. 2 Km
Cujira School Complex & International Games Stadium	Approx. 2 Km
Panjim Main Bus Stand	Approx. 3 Km
Patto Commercial Plaza	Approx. 3 Km
Grand Hyatt Hotel & Bambolim Beach	Approx. 4 Km
Inox Theater & Panjim Market	Approx. 4 Km
Goa University	Approx. 5 Km
Miramar Beach	Approx. 6 Km
Karmali Railway Station	Approx. 12 Km
Airport	Approx. 25 Km

Located at Village Cujira under Village Panchayat of St. Cruz.

For Bookings & Enquiries, Contact



M/s PRIORITY CONSTRUCTIONS

'Priority Signature', Near Skoda Showroom, New Taleigao By-pass Road, Taleigao, Goa. 403 003

Phone : +91 832 242 2999 / +91 9011 915 711

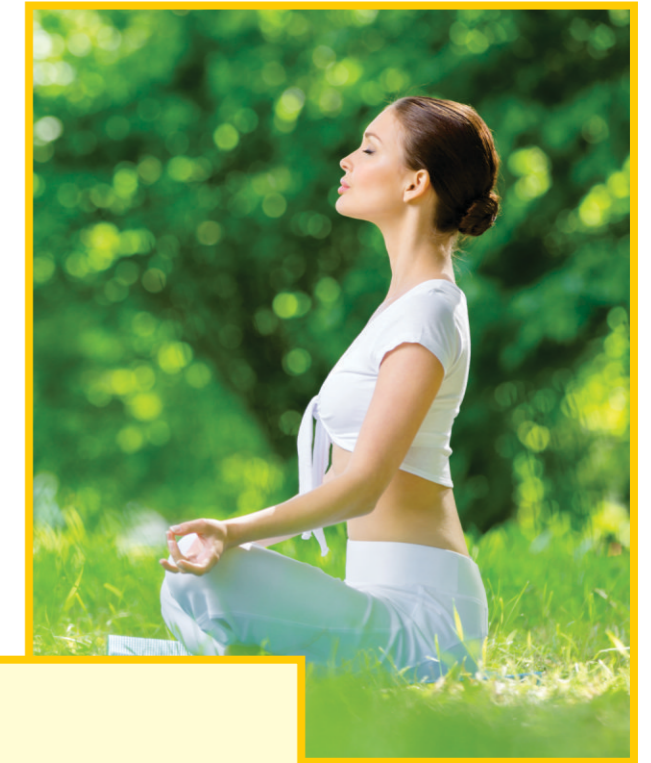
Email : sales.constructions@gmail.com / priority.constructions@gmail.com

www.grouppriority.com

Architect : Mr. Kundan Prabhu

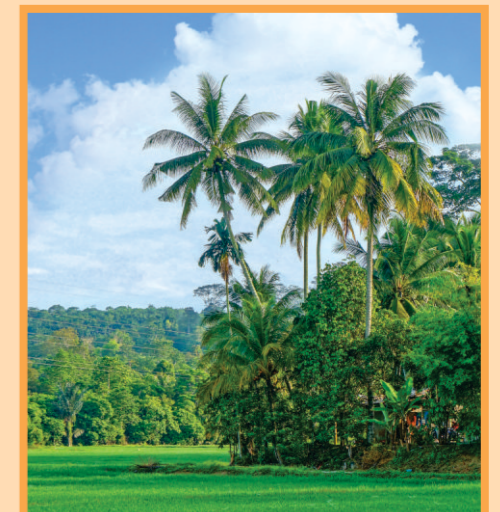
Structural Engineer : Mr. Yogesh Bhohe

All illustrations are artistic impressions only. All landscaping features are subject to local authorities approval. The information contained in this brochure is subject to change as may be required by the authorities or the company and are not a part of an offer or contract. All measurements are approximate. While every reasonable care is taken in providing this information, the developers cannot be held responsible for any inaccuracy.



Orchard Avenue
Mercers - Goa

Your corner of Serenity!



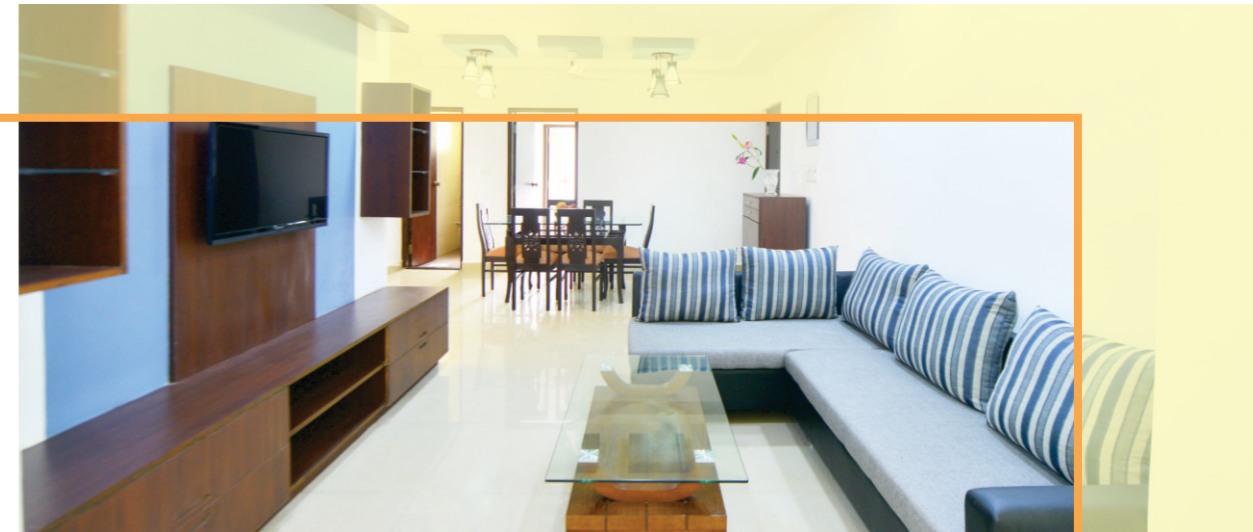
** Photograph taken at the site.



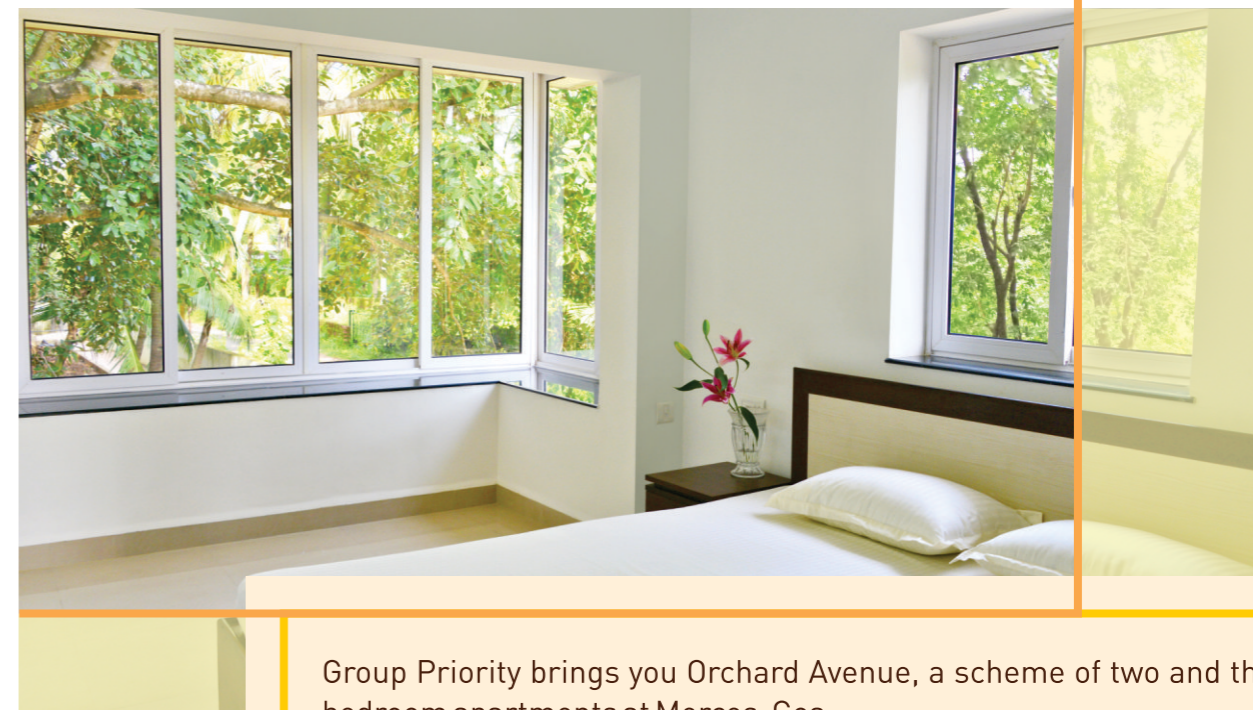
** Photograph taken at the site.



** Photograph taken at the site.



** Photograph taken at the site.



Project Highlights

The homes are ideally located close to all your urban amenities like the KTC Panjim Bus Stand, Market Places, GMC (Goa Medical College & Hospital), Goa Dental College and Hospital, The upcoming Cujira School Complex and the National Sports Stadium, Bambolim.

Group Priority brings you Orchard Avenue, a scheme of two and three bedroom apartments at Mercedes, Goa.

Homes which give you a sense of luxury and convenience, Orchard Avenue has been designed and fitted with premium specifications and finishes keeping in mind our customers satisfaction at all times.

Catering to the ever increasing need for affordable homes in Goa. Group Priority gives you an excellent opportunity to have a great home with all the facilities of a premium housing scheme well within your budget.

Orchard Avenue is equipped with landscaped gardens, jogging track, dedicated kids play and outdoor games, the perfect place to raise your family in security and comfort.

Birds Eye View

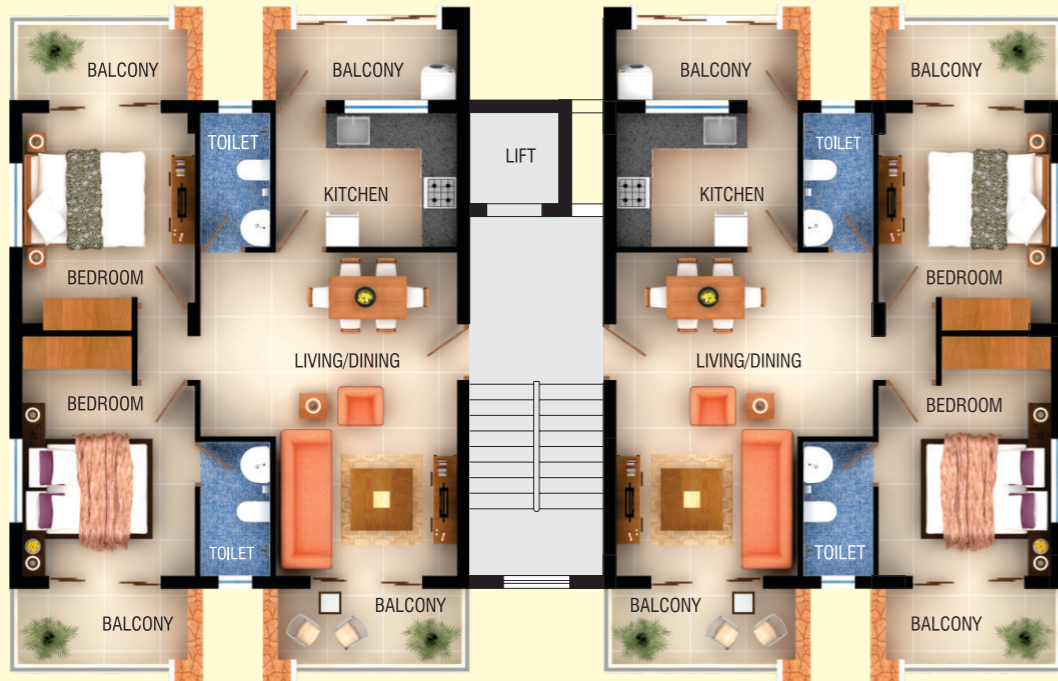


Amenities

- Children's Play Area
- Jogging Park
- Designated Car Parking for Residents & Visitors
- In house Gym / Club House / Supermarket
- CCTV Cameras at Strategic Locations
- Elevator (Lift) facilities for each Block
- Rack Up Power Generator 24X7
- Inverter Provision in Flats
- Security & Water Back-up 24X7
- Solar Street Lighting
- Solar Panel Heating System
- Earthquake Resistant Structural Design
- Underground Cabling
- STP Treated Water for Gardening
- Provision for Satellite TV Connection
- Polished Granite Window Still Tops
- Service Verandah with Washing Machine & Dishwasher Provision
- With Serene natural Ambience & Lush Green Surroundings
- Badminton Court
- Basketball Court



Scheme Layout



Typical First, Second, Third & Fourth Floor Plan

Typical Two Bedroom Apartment Layout (Area : 107 sq.mt.)



Typical Three Bedroom Apartment Layout (Area : 138 sq.mt.)



Typical First, Second, Third & Fourth Floor Plan