



Life is an open sky.





Another fast growing node from Navi Mumbai, where people will get maximum appreciation in the coming years.

- Bokadvira station 2 to 3 km. approx.
- Uran station 3 to 4 km. approx.
- Proposed school at plot no. 73
- MSEB project
- JNPT Township and Uran Town at 10 min. drive
- State Highway 54
- Proposed Sewri - Nhava Trans-Harbour Bridge



Fly. Dream. Be with the stars. Live at Vishwa Abha. It's an address where life is like an open canvas and you are invited to paint your picture. Only here, endless facilities coupled with soaring aspirations make you realize that life indeed is an open sky.

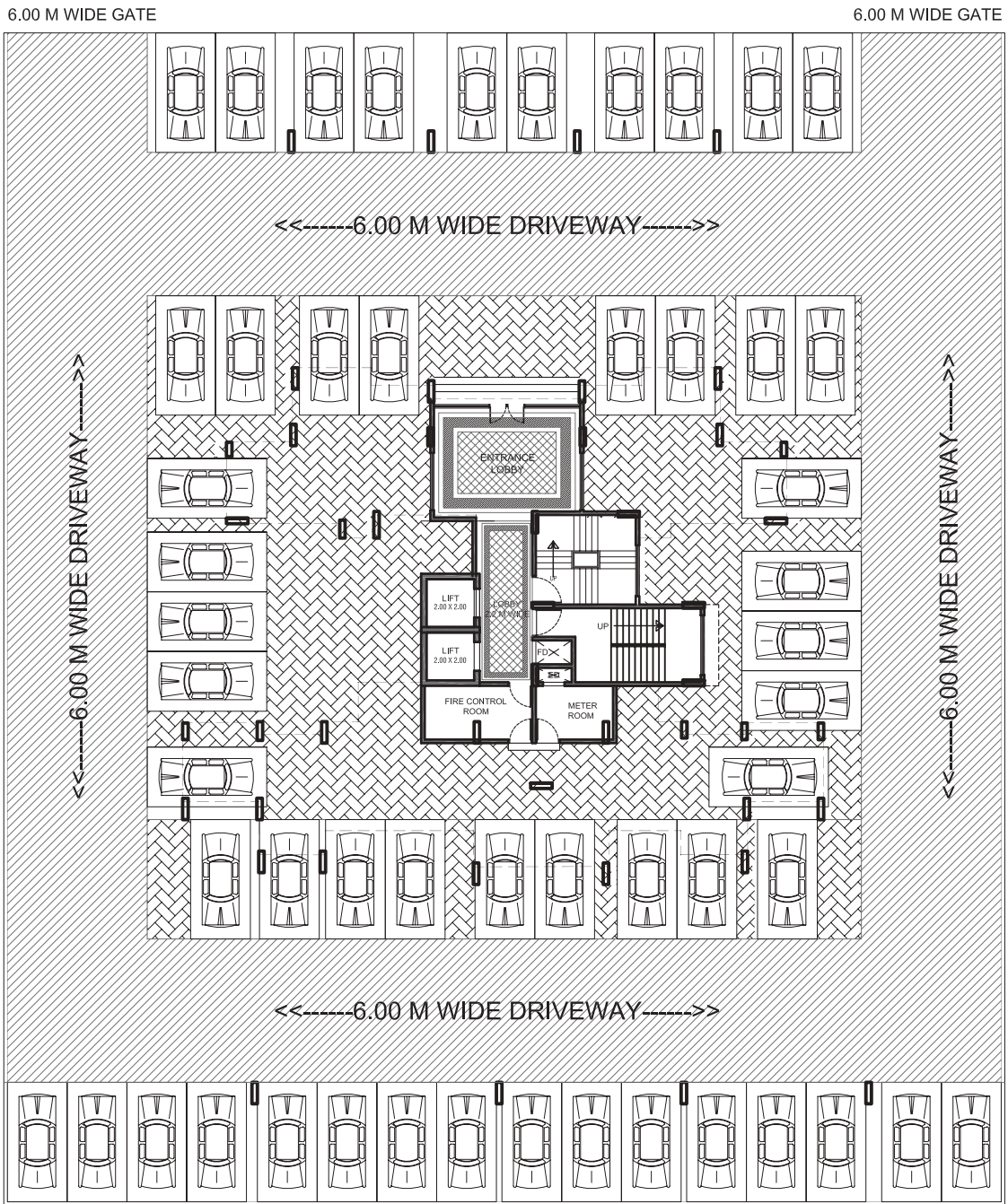
### Project Highlights

- G+ 17 storey
- Grand Elevation
- Elegantly Designed 1 & 2BHK Apartments
- Ample Car Parking
- Two High-speed Elevators
- Ample Open Space in the Surroundings
- Gymnasium
- Ample Children's Play Area
- Intercom Facilities
- Decorative Main Door
- Provision for Safety Door
- Society Office



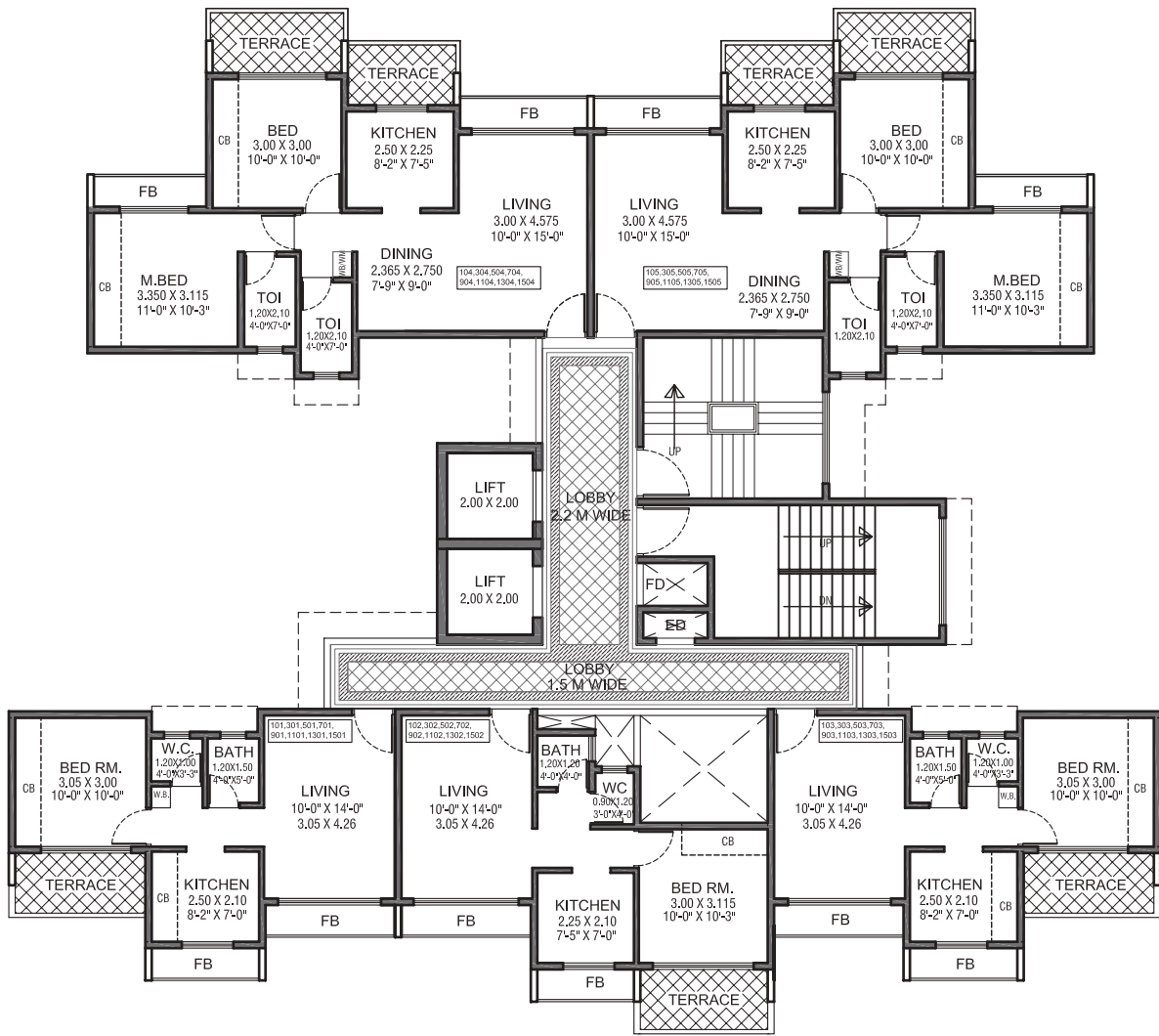


# 11.00 M WIDE ROAD



## Ground Floor Plan





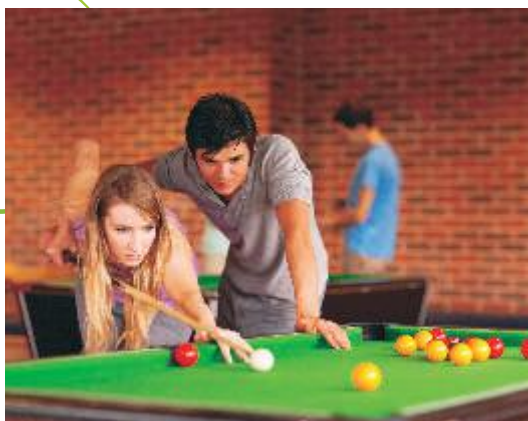
**1st, 3rd, 5th, 7th, 9th, 11th, 13th, 15th Floor Plan**





Let it out. Break free. Go beyond yourself. Make every minute add a little dash of energy as you sweat it out while playing table tennis, carom or pool. Be fit for life. Be perfect.

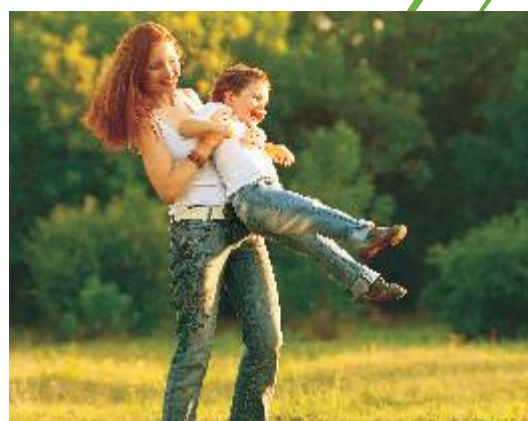
# PERFECT

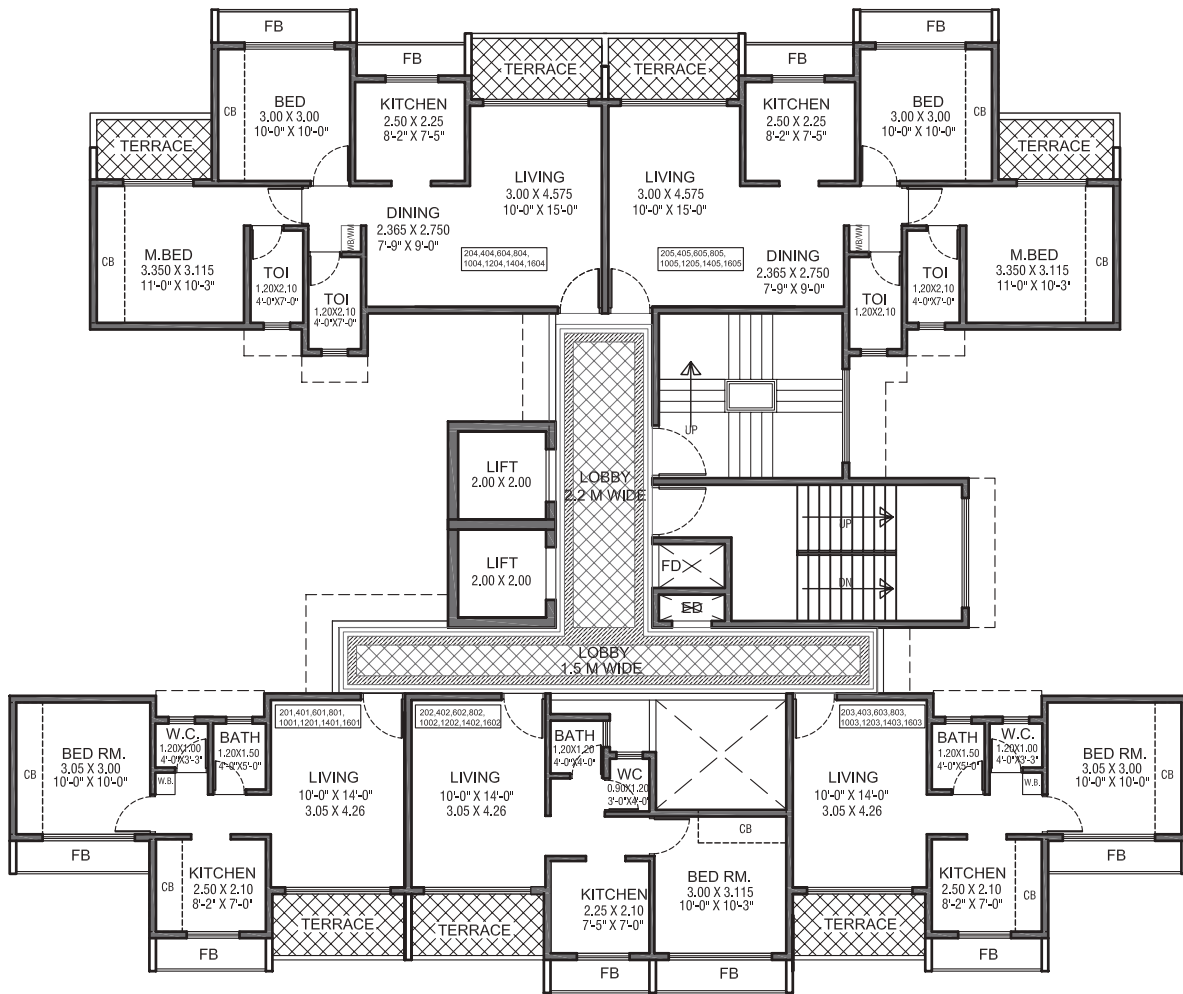




Lean, mean, fit, fine, choose what you want to be at the high-tech gym. Catch hold of your young ones as they run around the play area. Or simply jog along the tracks with them. Stay young. Stay cool.

# LIFESTYLE

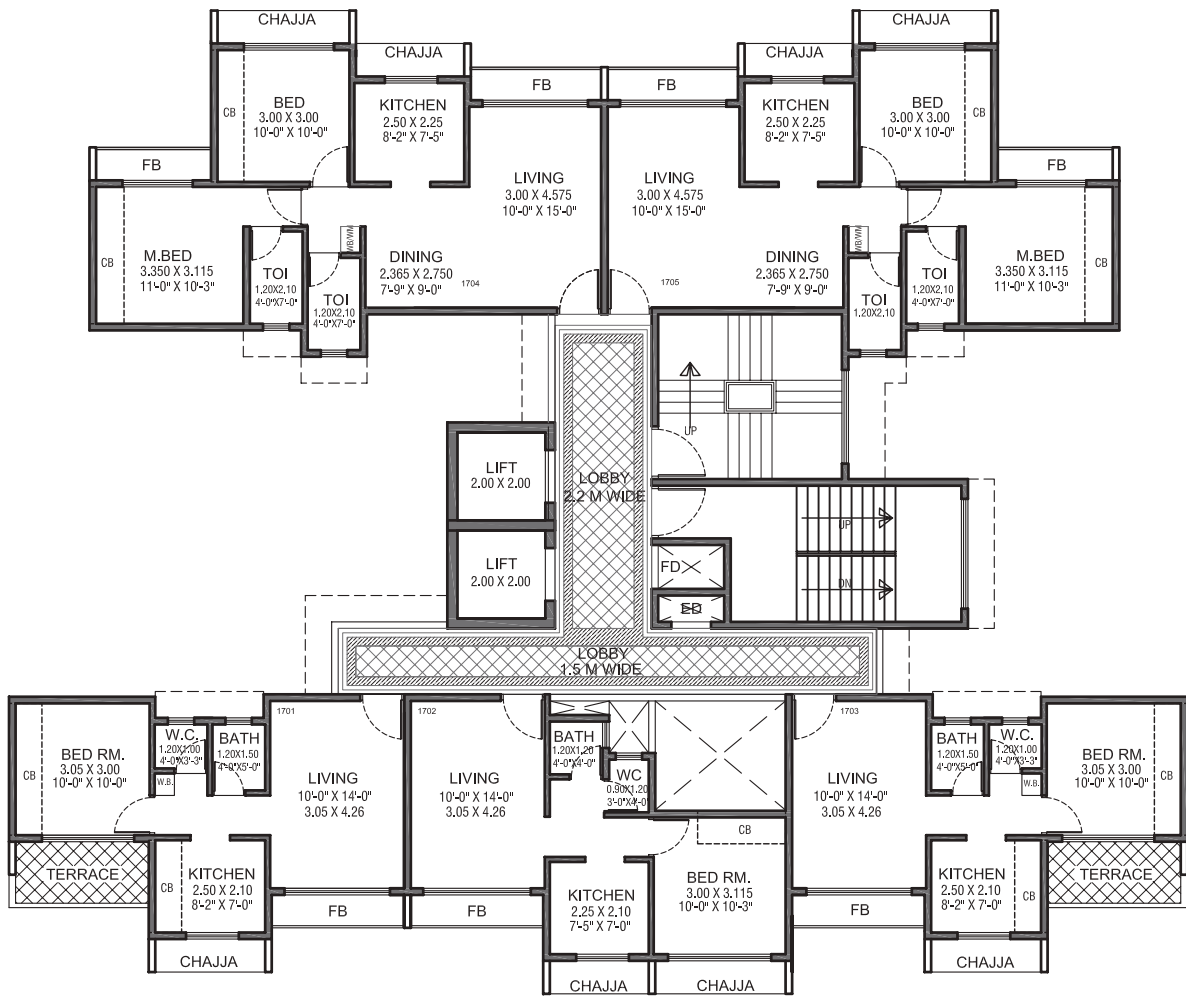




**2nd, 4th, 6th, 8th, 10th, 12th, 14th, 16th Floor Plan**







17th Floor Plan



SIMPLY A CUT ABOVE,  
LIKE YOU.



#### Project Highlights

- G + 28 Storey
- 4<sup>th</sup> - 13<sup>th</sup> Floor: Two Lavish 2 BHK Apts.
- 14<sup>th</sup> - 28<sup>th</sup> Floor: One Luxury 3 BHK Apts.
- 2 Levels of Parking
- 3 High-Speed Elevators
- Modular Kitchen & Split AC in the Apts.



OUR NEW PROJECTS ARE COMING UP AT THE FOLLOWING LOCATIONS:



**Project Highlights**

- Stilt + Podium + 12 Storey
- 2 BHK Apts. & Commercial Spaces
- Clubhouse
- Landscaped Garden
- 3 High-Speed Elevators
- KOHLER Bathroom Fittings



• PANVEL • KHARGHAR • ULWE • NERUL AND OTHERS



## Location Plan



**Architect -** Designo

**RCC Consultant -** Adharshila Consultants

**Legal Advisor -** Intralegal

**Plumbing Consultant -** Span Engineers



**Site Address:** Vishwa Abha, Plot No. 28/29, Sector-55, Dronagiri, Navi Mumbai

**Corporate Address:** 317/319, B-Wing, Arenja Corner, Plot No - 71, Sector-17, Vashi, New Mumbai - 400705

**Call:** +91-22-27888123 / +91-9821085414 / +91-9870022414

**Email:** info@vishwagreenrealtors.com / infovgrpl@gmail.com

**Website:** www.vishwagreenrealtors.com

**"Disclaimer:** All plans, drawings, amenities, facilities, etc.; are subject to the approval of the respective authorities and would be changed, if necessary. Discretion remains with the developers. All rendered images and maps are artists conception and not actual depictions. This is not an offer document."