



< ...break the brackets  
& live infinite >



gravity  
is restriction

---

leave  
the ground  
& fly







artistic impression of the elevation

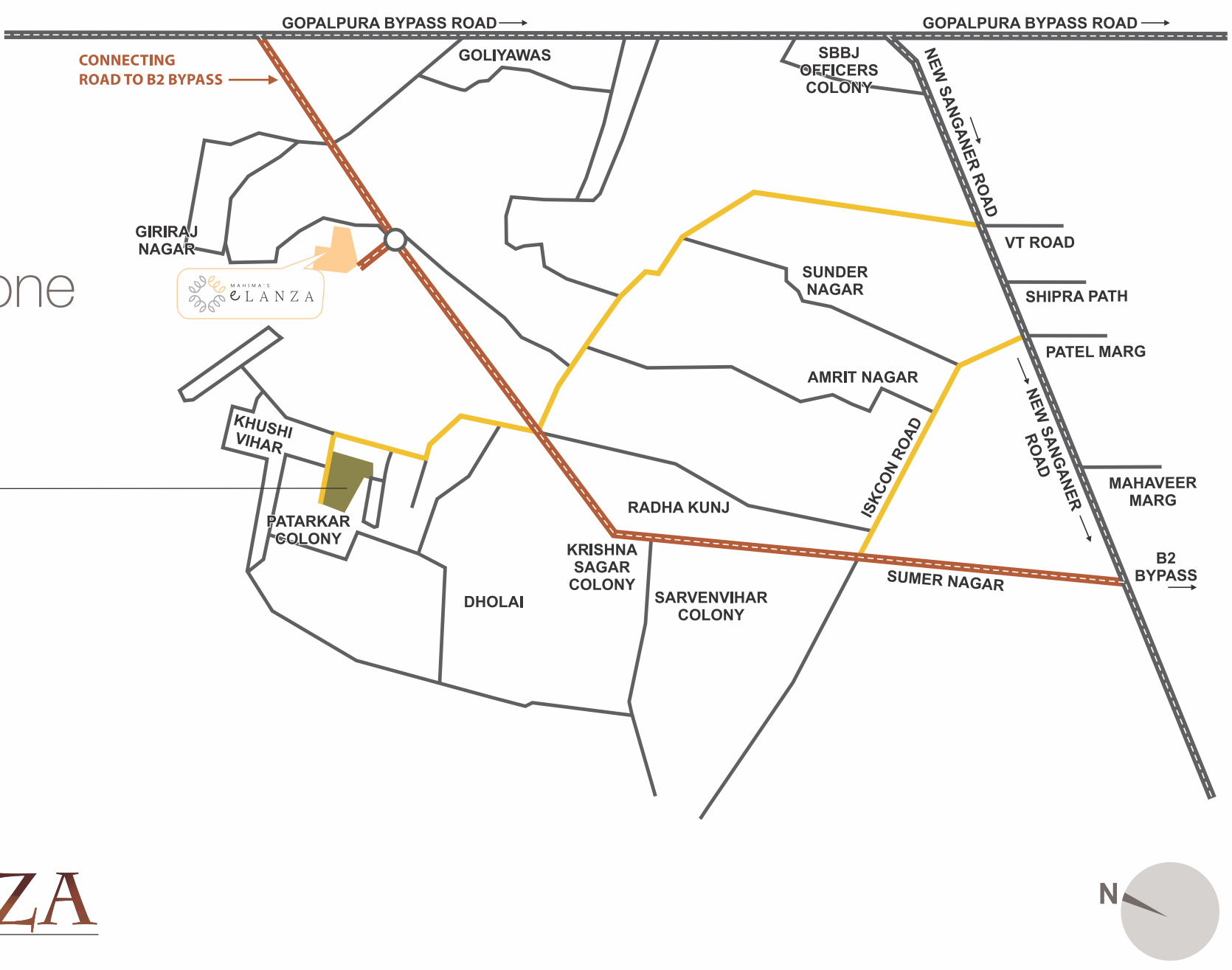
The moment you open up to something new and fresh, you live the essence of life. Restriction and do's & don'ts can't be the defining parameters of life. There are moments that carry the whole story in the heart without any proper beginning or an appropriate culmination. That's why Mahima's Florenza is where you unfold the limitless spirit of life. It's about indulging with your real self and relishing the beauty of timelessness. Leave the rules behind and get ready to start a never ending story. It's the time to break the brackets and live infinite.

# MAHIMA'S FLORENZA

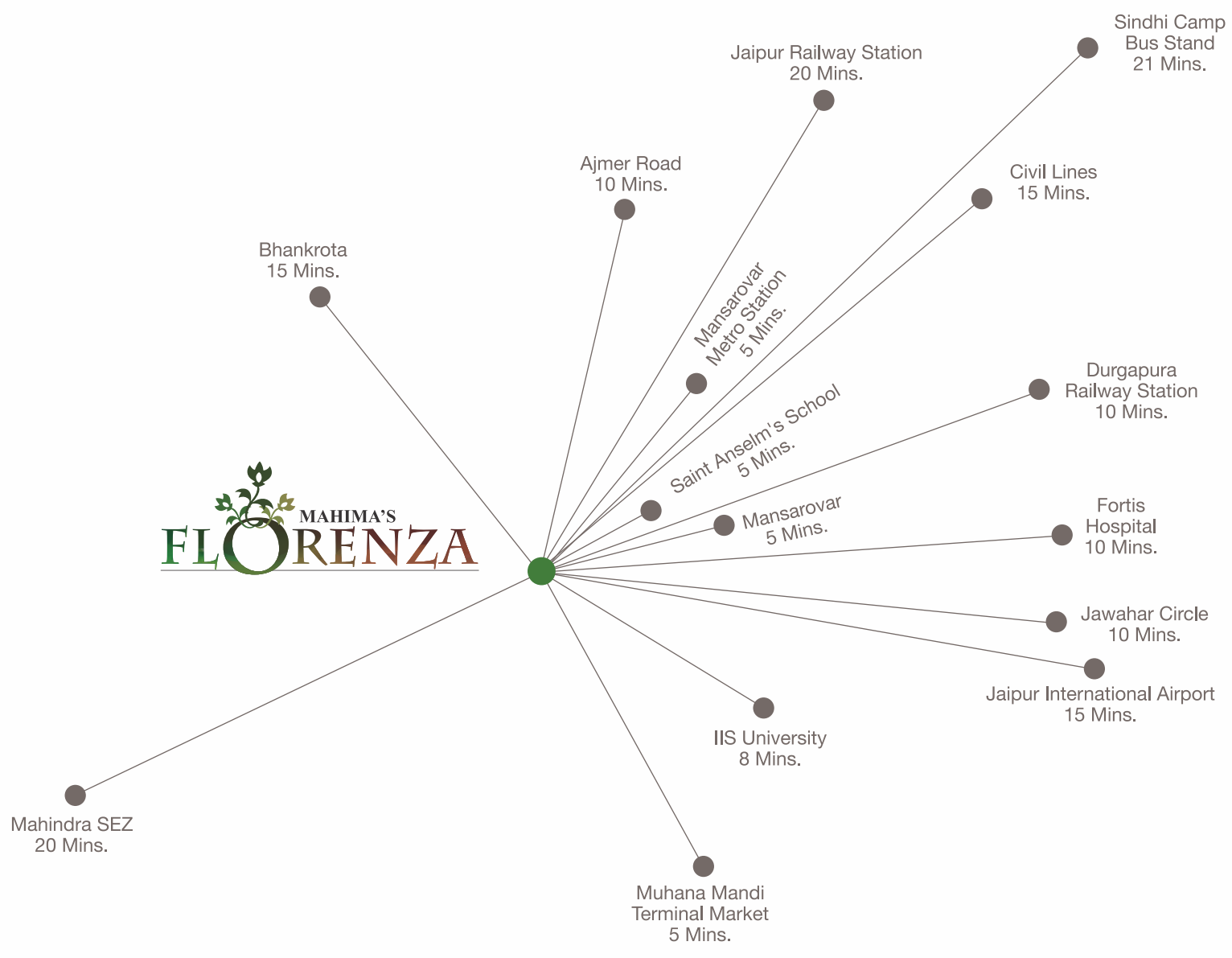
2 & 3 BHK APARTMENTS  
PATRAKAR COLONY, MANSAROVAR EXT. | JAIPUR



best location  
of the town  
probably everyone  
knows it



**MAHIMA'S FLORENZA**  
2 & 3 BHK APARTMENTS  
PATRAKAR COLONY, MANSAROVAR EXT. | JAIPUR



Just saying 'best location of the town' is not enough; we back it up with facts and landmarks. Located at Patrakar Colony, Mahima's Florenza is seamlessly connected to all the prominent places like Ajmer Road, B2 Bypass, major educational institutions, Airport and hospitals.

Extensive green covers and clean & healthy environment is cherry on the cake.

### location advantages

- Close to prominent educational institutes
- Close to excellent medical facilities
- Few minutes from Airport and Metro station
- Well-connected to Ajmer Road and B2 Bypass
- Well-developed locality with green belt



obvious is  
for ordinary

---

go explore  
new horizons  
everyday



Going for a long ride in your luxury sedan on a weekend is obvious. Going to an island to explore nature on a vacation is obvious. Doing it all at your home every day is something extraordinary.

Yes, Mahima's Florenza has given a new meaning to openness and exploration which translates into daily adventure in your life.

So, get ready, gear up and break the brackets by exploring something new everyday.







artistic impression of side elevation

in a world full of restrictions  
openness is here to claim



artistic impression of drop-off area

Restrictions are creation of a mind closed inside a closet called monotony. Take it out of there and feel the wind in your hair. Go for an evening exploration in the dews of calmness. Don't stop there, glide in the seamless beauty of the landscapes around you.

Go with the flow of your heart in the openness that you've always surged for. Claim it here!





artistic impression of club drop-off area

not playing  
is not an option  
but you have  
options to play



kids' play area

With advancements in technology children are just sitting inside rooms, playing with a toy or on a gaming console. We believe that old school is passè but ideal for learning and exploring new things. At Mahima's Florenza, kids' play area gives your children an opportunity to go out there, enjoy and learn amidst the nature.



basketball court

Playing was never a means to exercise or burn calories, it has always been an adrenaline jerking experience that Breaks The Brackets of your own limits. With a basketball court at your home, you will surely live infinite at Mahima's Folrenza.



fish pond

At Mahima's Florenza if you finish exploring one thing, you will have a flock of explorations waiting for you further. Don't believe us? Here it goes, with a fish pond to explore serenity and flawlessness of a fish life, you'll surely get a wide grin on your and the little one's face.



winter & summer are not the same  
why should garden be



artistic impression of winter garden view from balcony

Summers have its own bright aura that conveys warmth amongst all while winters with its chilly presence and green surroundings invite you to sip it slowly and enjoy the majesty. Nature has a plethora of colors to be explored; treating them same is injustice to self.

With well thought-out winter garden where you can embrace warm sun in chilly winters and summer garden where you can enjoy the cool breeze flowing pass the flora surrounding you, enjoy each color of the nature to its fullest.



artistic impression of summer garden



you gazing  
through the  
window

where is  
the space  
for interruption?



And there's always a provision for a 'ME' time, when you can casually stand aside a window and gaze towards the endless open spaces that welcome your eyes with no interruptions in between.

You can ignite your creativity, go back in memory lane or enjoy doing nothing for some time; the openness surrounding Mahima's Florenza has innumerable things to offer at your room's window that gives you a feeling of infinite living.







artistic impression of living / dining area

from this world to your dream world,  
it's all about your taste for life.



artistic impression of master bedroom

Everyone has their own distinct taste; some like it to be plush and beautiful, while others like it to be plain and subtle. Well, we have designed the spaces keeping in mind distinctive tastes. We have come up with a supremely dynamic canvas for each and everyone to mould it to their personal flavor.

Because we think it's all about your taste for life. Explore it here!





dive into  
the flow of life

---

pearls are always  
at the bottom



Living a life like such will surely give you the liberty to plunge into the social life. There are many pearl-like possibilities at Mahima's Florenza; you just have to find them one by one.



outside, it's for chilling  
it's cool to be inside



artistic impression of podium view

After a long day and hectic schedule  
the best thing to do is sitting on a couch  
and relaxing; or is it?

Think of taking a plunge into the pool,  
lapping out all the strain and chilling inside  
a poolside cabana chitchatting with your  
folks. Isn't that inviting! There are numerous  
perspectives of breaking the brackets;  
getting it all at one place is what makes  
an infinite living.



artistic impression of swimming pool with cabanas





artistic impression of well-equipped gymnasium

facilities to workout  
luxury to relax



artistic impression of members lounge

If you have a fanaticism for heavy weight training or you enjoy a casual evening workout or just a warm-up exercise to relax in the opulence of super luxurious members lounge, we have it all for you.

So, you just have to pick a time, click your mood and get started.





artistic impression of mini theatre

entertainment has many meanings  
 some of them are beautifully defined here



indoor games room

If explorations outside seem too less for you, Mahima's Florenza have indoor games room for you to get in and get all thrilled. Show your brilliance on the carom board, smash your elegance while playing table tennis or let the horses of your brain run while playing chess. Play according to your taste, the music of life will surely be melodious here.



crèche

No, we can't miss the cute toddlers of our vicinity. They will learn, play, stay safe and secure in the premises of our crèche. Our infinite life is not limited for few.



billiards lounge

Yes, we know that you got a perfect shot under your sleeves. Why wait then! Go ahead; our billiards lounge awaits you to explore new horizons of the game.





live  
inside

---

exercise  
outside



Why should there be walls around your fitness regime, open up, stretch, you have the whole nature to touch. Fitness here is not about binding yourself; it's about opening up and breathing in a fresh and open environment.

Isn't it good to be fit for life!















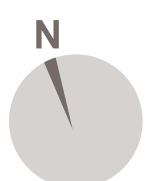
clubhouse  
plan



ground floor

legend

-  1. Club entry
-  2. Club lobby
-  3. Reception
-  4. Members lounge
-  5. Multi-purpose hall
-  6. Corridor
-  7. Pantry
-  8. Billiards lounge
-  9. Indoor games & lounge
-  10. Crèche
-  11. Tuition room
-  12. Toilets












# clubhouse plan



## podium

### legend

-  1. Home theatre
-  2. Club lobby
-  3. Gymnasium
-  4. Changing rooms (Male)
-  5. Changing rooms (Female)
-  6. Swimming pool
-  7. Kids' play area

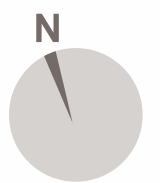




# site plan



## legend



### ground floor

#### entry & circulation landscape

1. Main entry / Exit
2. Entry canopy
3. Bus shelter
4. Entry plaza
5. Water feature
6. Mediterranean garden
7. Accent paving
8. Entry to clubhouse
9. Driveway
10. Walkway / Jogging path
11. Planting island
12. Entry to lift lobby
13. Steps to podium

#### active landscape

14. Car parking on grass cell pavers
15. Utility area
16. Planting area
17. Basketball practice court
18. Shuttle court
19. Outdoor fitness plaza for senior citizens
20. Outdoor gym for youth
21. Kids adventure play area
22. Walkway / Skating track
23. Rest plaza

### podium

#### summer garden

24. Palm plaza
25. Water channel with foggers
26. Floral frame walkway
27. Party lawn
28. Partly covered lap pool
29. Kids' pool
30. Pool deck with loungers
31. Family cabanas
32. Water wall
33. Palm planters
34. Central trellis garden
35. Mini amphitheatre
36. Activity lawn

37. Skylight cut out
38. Buffer planting
39. Water cascade
40. Floral cascade
41. Grand stairway

#### winter garden

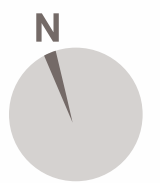
42. Steps to podium
43. Frangipani court
44. Dry garden with illuminated sculptural columns
45. Solarium with seating & special plants
46. Walkway
47. Sunken timber seating plaza with fire pits
48. Central trellis garden
49. Tot lot
50. Pavilion
51. Fish pond
52. Timber bridge
53. Skylight cut out
54. Buffer planting



floor  
plan



area table



UNIT TYPE	BUA (SQ. FT.)	MUMTY (SQ. FT.)	SBUA (SQ. FT.)	TERRACES (SQ. FT.)
2 BHK PODIUM	1109.79	0.00	1442.73	0.00
2 BHK CORNER PODIUM	1116.57	0.00	1451.54	0.00
2 BHK	1005.38	0.00	1306.99	0.00
2 BHK CORNER	1012.16	0.00	1315.81	0.00
3 BHK T1	1766.13	0.00	2295.97	0.00
3 BHK T1 PENTHOUSE	1957.53	85.79	3376.94	1664.31
3 BHK T2 CORNER PODIUM	1315.67	0.00	1710.37	0.00
3 BHK T2	1625.46	0.00	2113.10	0.00
3 BHK T2 CORNER	1632.35	0.00	2122.06	0.00
3 BHK T2 PENTHOUSE	1815.44	85.79	3125.65	1531.16
3 BHK T2 CORNER PENTHOUSE	1823.74	85.79	3136.44	1531.16

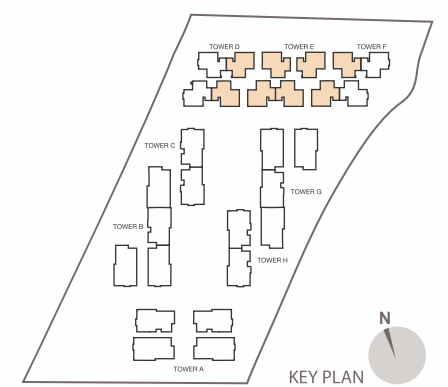
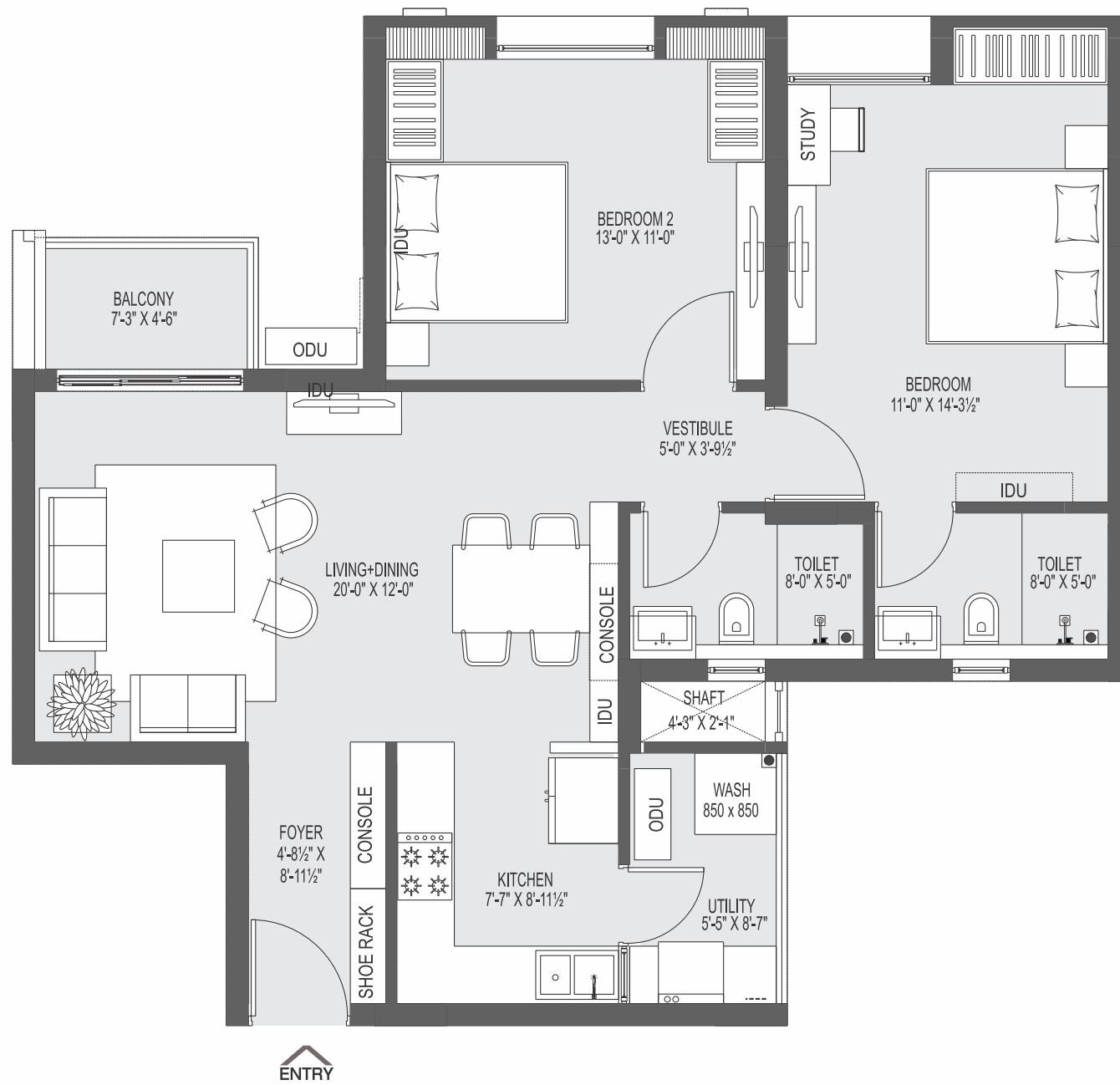
UNIT TYPE	BUA (SQ. FT.)	MUMTY (SQ. FT.)	SBUA (SQ. FT.)	TERRACES (SQ. FT.)
3 BHK T3 PODIUM	1197.56	0.00	1556.83	0.00
3 BHK T3 CORNER PODIUM	1204.35	0.00	1565.66	0.00
3 BHK T3	1477.34	0.00	1920.54	0.00
3 BHK T3 CORNER	1484.17	0.00	1929.42	0.00
3 BHK T3 PENTHOUSE	1650.21	72.87	2843.37	1396.19
3 BHK T3 CORNER PENTHOUSE	1658.50	72.87	2854.15	1396.19
3 BHK T4	1364.62	0.00	1774.01	0.00
3 BHK T4 PENTHOUSE	1523.75	72.87	2618.26	1274.77

- 2 BHK TYPICAL
- 2 BHK CORNER
- 3BHK T1
- 3BHK T2
- 3BHK T2 CORNER
- 3BHK T3
- 3BHK T3 CORNER
- 3BHK T4



unit  
plan

2BHK | BUA: 1005.38 Sq.ft. | SBUA: 1306.99 Sq.ft.

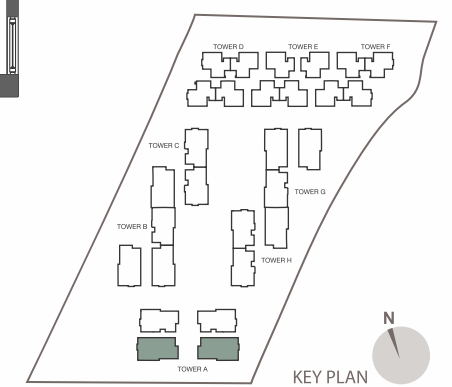
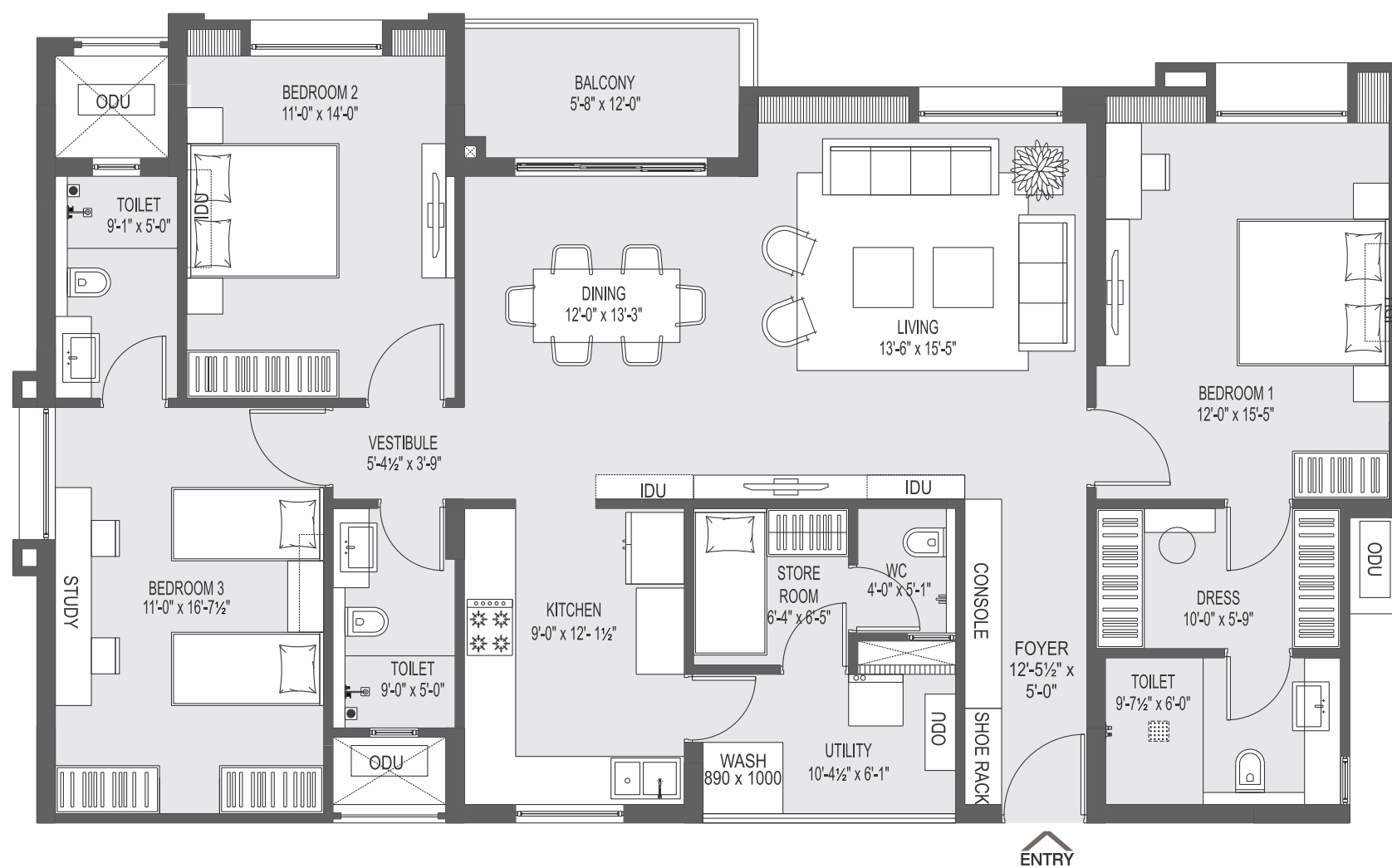


2BHK | BUA: 1005.38 Sq.ft. | SBUA: 1306.99 Sq.ft.



unit  
plan

3BHK T1 | BUA: 1766.13 Sq.ft. | SBUA: 2295.97 Sq.ft.

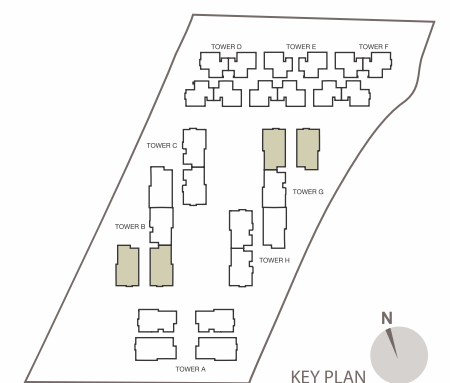
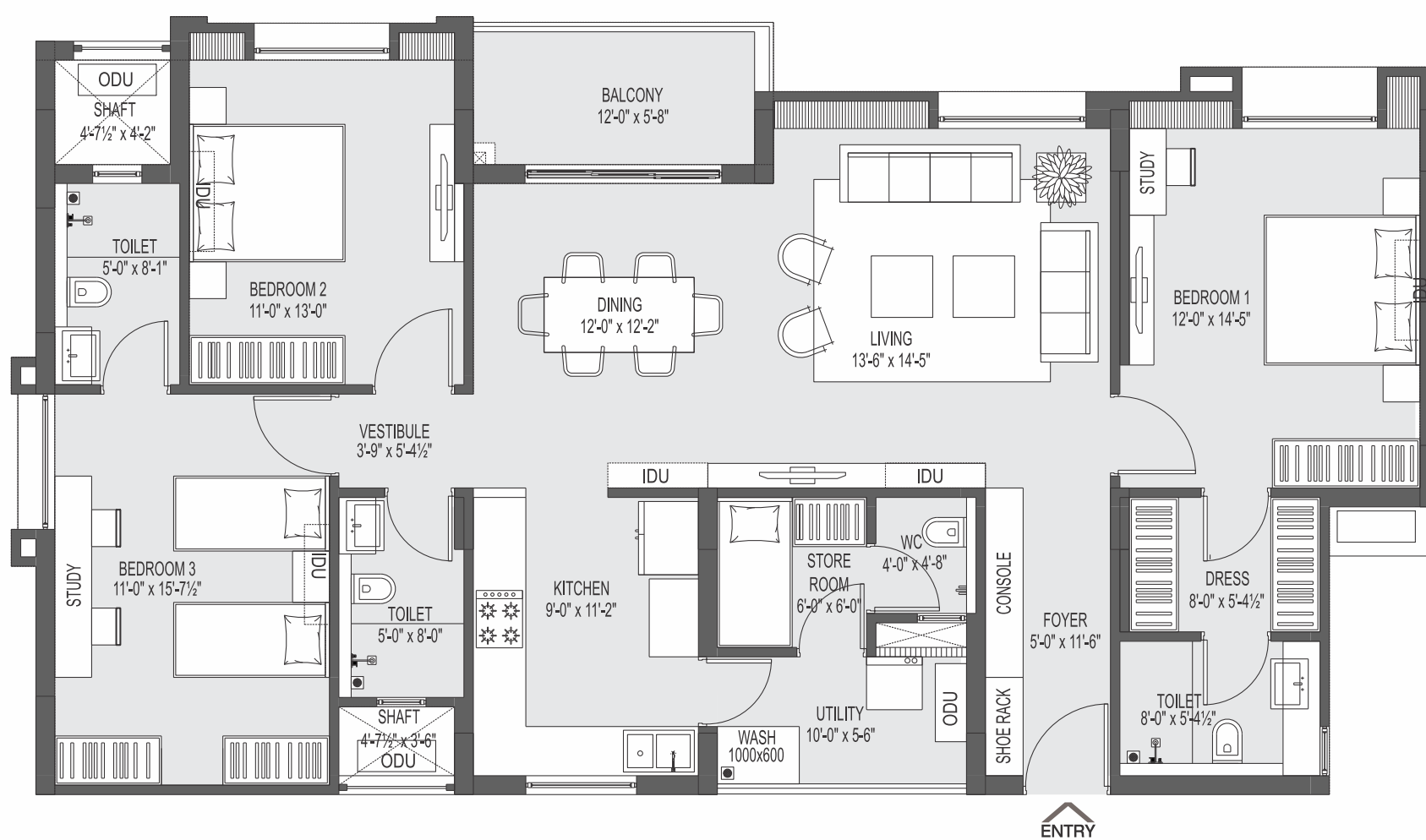


3BHK T1 | BUA: 1766.13 Sq.ft. | SBUA: 2295.97 Sq.ft.



unit  
plan

3BHK T2 CORNER | BUA: 1632.35 Sq.ft. | SBUA: 2122.06 Sq.ft.

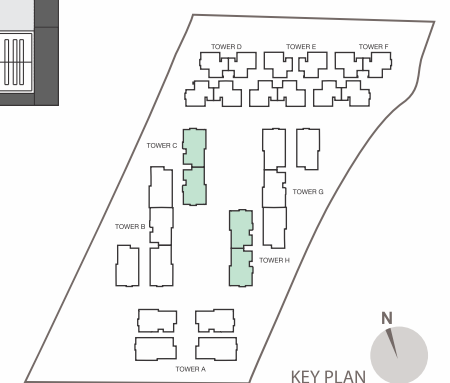
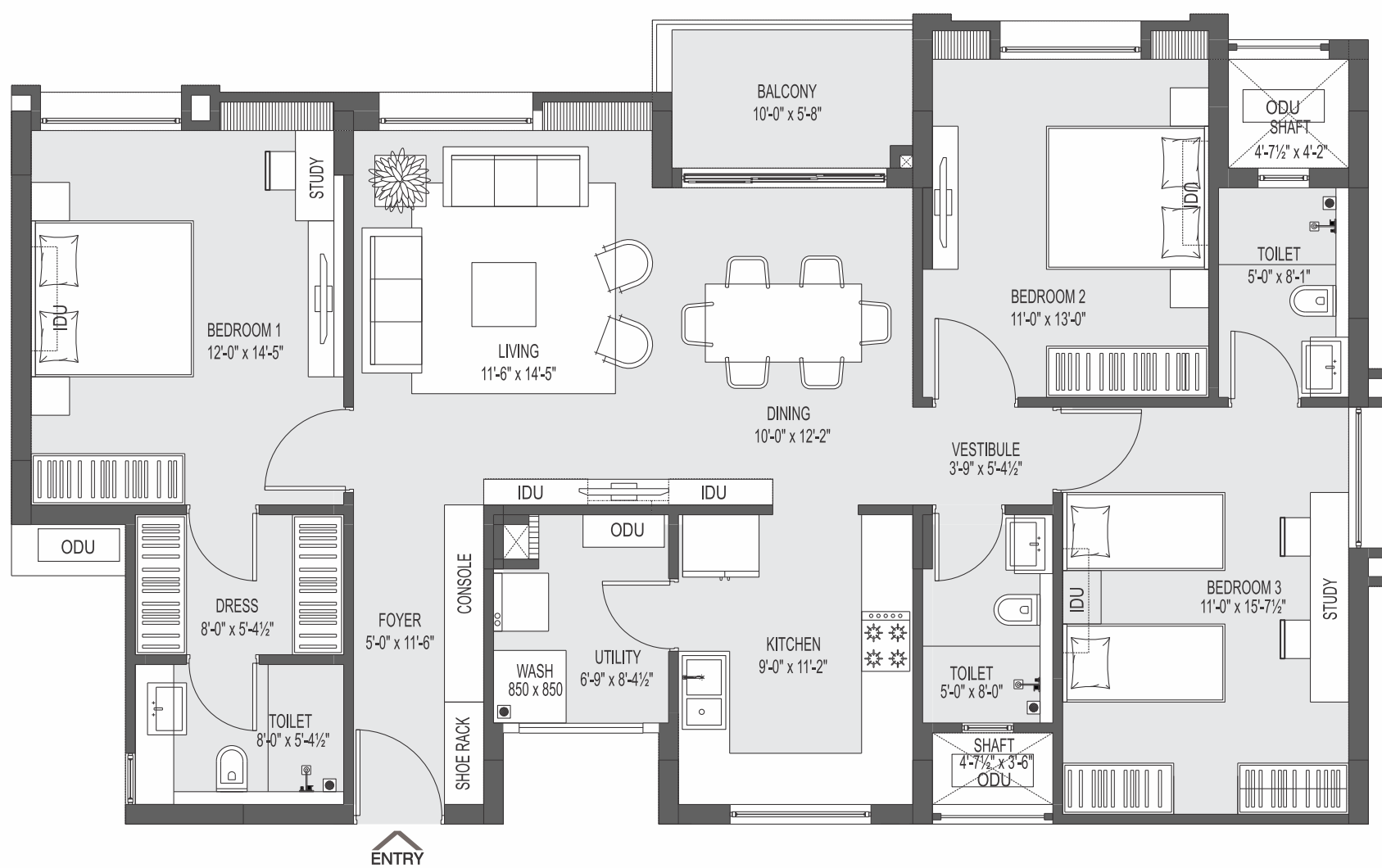


3BHK T2 CORNER | BUA: 1632.35 Sq.ft. | SBUA: 2122.06 Sq.ft.



# unit plan

3BHK T3 CORNER | BUA: 1484.17 Sq.ft. | SBUA: 1929.42 Sq.ft.

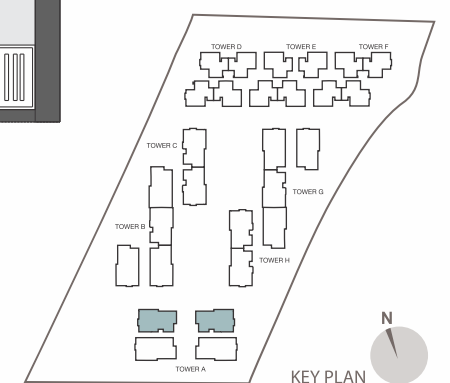
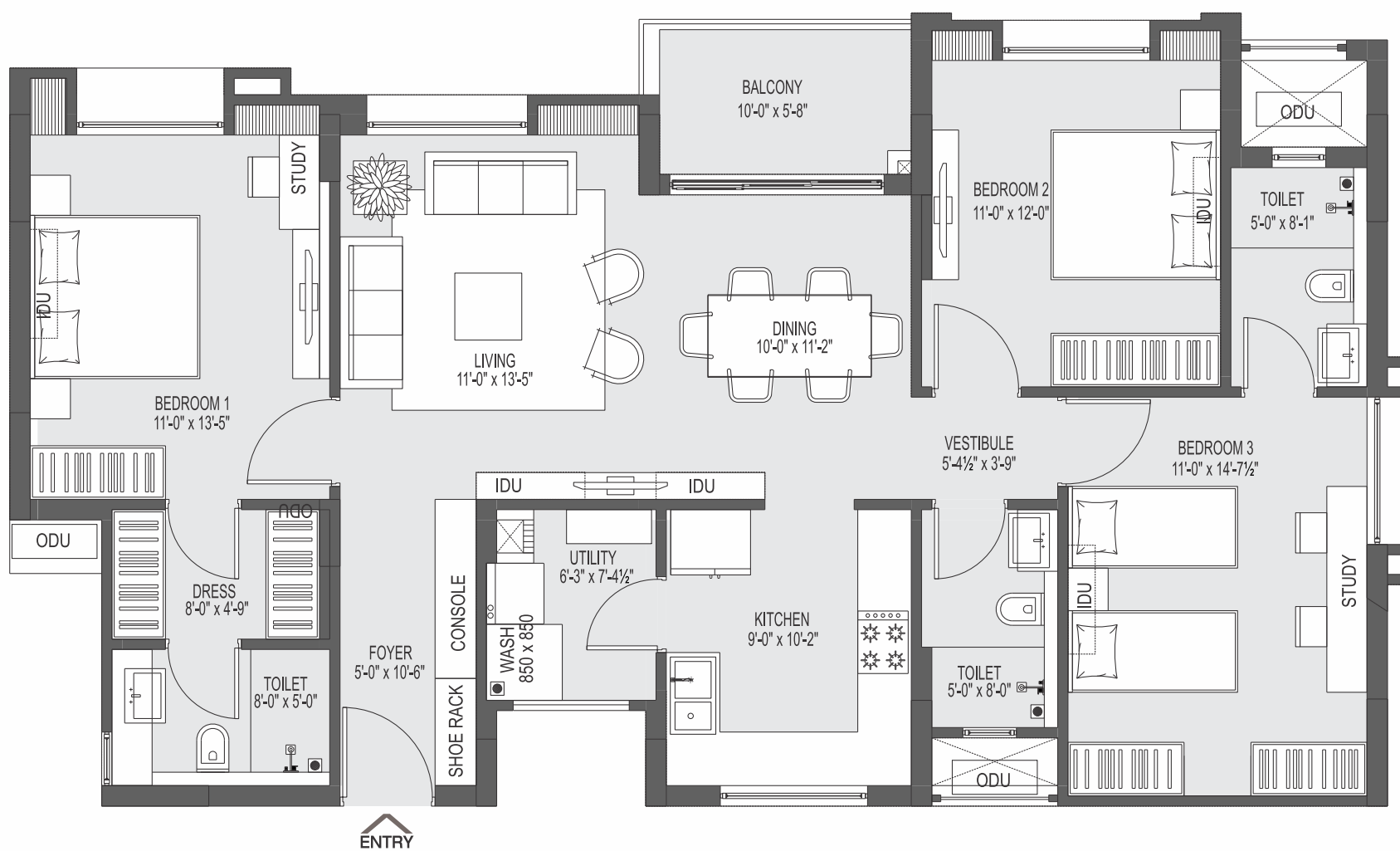


3BHK T3 CORNER | BUA: 1484.17 Sq.ft. | SBUA: 1929.42 Sq.ft.



# unit plan

3BHK T4 | BUA: 1364.62 Sq.ft. | SBUA: 1774.01 Sq.ft.



3BHK T4 | BUA: 1364.62 Sq.ft. | SBUA: 1774.01 Sq.ft.

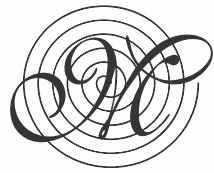


# specifications

	LIVING/DINING	Flooring Skirting Walls Finishes Ceiling	Premium vitrified flooring Vitrified profile Plaster with POP and OBD Plaster with POP and OBD
	MASTER BEDROOM	Flooring Skirting Walls Finishes Ceiling	Premium vitrified flooring Vitrified profile Plaster with POP and OBD Plaster with POP and OBD
	OTHER BEDROOMS	Flooring Skirting Walls Finishes Ceiling	Premium vitrified flooring Vitrified profile Plaster with POP and OBD Plaster with POP and OBD
	TOILETS	Flooring Wall Finishes Ceiling Sanitary Fittings CP Fittings Hygiene	Anti-skid ceramic tiles Ceramic tiles up to 7'-0" height & rest plaster with puty & water based enamel paint Plaster with POP and OBD European wall hung WC, under / over counter basin or basin with pedestal in all the bathrooms of internationally renowned brands Single lever, brush steel finish CP fittings of premium quality of brands Separate dry and wet areas
	KITCHEN	Flooring Skirting Wall Finishes Wall Tiles Counter Top Sink CP Fittings	Floor with anti-skid matt finish tiles Tile profile Plaster with POP and OBD Tiles up to 2' height above counter top Premium granite Stainless steel sink with drain board Brush finish sink mixer
	BALCONY	Flooring Skirting Handrail	Anti-skid ceramic tiles Tile profile MS railing with enamel paint satin finish
	DOORS AND WINDOWS	Main Door Other Doors Windows Ventilators	Flush door with veneer / laminate on both sides / ready-made designer flush door / equivalent Flush door with laminate on both sides / ready-made designer flush door / equivalent Aluminium powder coated / UPVC Aluminium powder coated / UPVC
	COMMON LOBBY	Flooring Skirting Wall Finishes Ceiling	Anti-skid premium class tiles / Natural stone Tile / Natural stone Plaster with POP and OBD Plaster with POP and OBD
	STAIRCASE	Riser and Tread Handrail	Natural stone MS railing with enamel paint satin finish
	STRUCTURE AND SERVICES	Earthquake resistant structure OH water tank for potable water & separate OH water tank for flushing water (Treated) Energy efficient, green eco-friendly nominal design and centralized grouped location of services Installation to ensure easy maintenance, fast track installation and compliance to all statutory regulations	BUILDING & SERVICES Power backup for common services Power backup in each flat up to 1 KVA Gas bank Garbage collection point Wi-fi clubhouse Landline / Intercom facility Provision for DTH CCTV at entrance Lifts Rain water harvesting system Sewerage treatment plant
	ELECTRICALS	High side electrical equipment - transformer, panels etc. of requisite designed capacity Electrical fittings & concealed copper wiring in PVC conduit Separate meter for lighting in common areas, elevators and pumps 16 Amps sockets for geysers in toilets and 25 Amps socket for air conditioners in all bedrooms Adequate nos. of 6 Amps sockets & 16 Amps sockets in kitchen Adequate 16 Amps plug sockets in each room. Multiple sockets in living room for connections to TV, stereo and other equipment One calling bell along with bell push	



the group



**MAHIMA GROUP**  
Committed to Excellence



Mahima Group is the pioneer of real estate in Rajasthan with 25 years of strong presence across various verticals of infrastructure development. The group boasts a highly motivated team of more than 300+ professionals working in various capacities to realize the larger vision in its true sense. In its existence of more than 2 decades, Mahima Group has successfully delivered 3667 residential and commercial units that cover 5.13 million sq. ft. of development. In commercial development 4 large commercial malls were delivered that houses more than 100+ renowned national and international brands. The extended Mahima family includes 1700 happy families that are residing in various projects of the group. Currently Mahima Group is developing 3.16 million sq. ft. of space that includes 1875 units across 7 ongoing projects. The group also runs 360 degree facility and project cycle management services that maintain its various completed projects in a very efficient and professional way. With a passion to bring about meaningful change in the lifestyle of contemporary society, Mahima is on a mission called "Constructing your world".

## completed projects (residential)

### Elite

2 & 3 BHK APARTMENTS & PENTHOUSES  
NEW SANGANER ROAD, JAIPUR

### Fountain Square

2 & 3 BHK APARTMENTS & PENTHOUSES  
JAWAHAR CIRCLE, JAIPUR

### Desire

1, 2 & 3 BHK APARTMENTS  
AJMER ROAD, JAIPUR

### Panorama

2 & 3 BHK APARTMENTS & PENTHOUSES  
JAGATPURA, JAIPUR

### Iris

APARTMENTS & PENTHOUSES  
NEW SANGANER ROAD, JAIPUR

### Nirvana

2 & 3 BHK LUXURY APARTMENTS & PENTHOUSES  
AJMER ROAD, JAIPUR

## completed projects (commercial)

### Crystal Palm

COMMERCIAL COMPLEX  
C-SCHEME, JAIPUR

### Triniti

COMMERCIAL COMPLEX  
NEW SANGANER ROAD, JAIPUR

### Panache II

2 BHK APARTMENTS  
JAGATPURA, JAIPUR

### Crystal Court

COMMERCIAL COMPLEX  
MALVIYA NAGAR, JAIPUR

### Crystal Mall

COMMERCIAL COMPLEX  
BANI PARK, JAIPUR

### Nirvana II

2 BHK APARTMENTS & PENTHOUSES  
AJMER ROAD, JAIPUR

## other on-going projects

### Elanza

2 & 3 BHK APARTMENTS & PENTHOUSES  
NEAR MANSAROVAR, JAIPUR

### Studio Panache

STUDIO, 1 & 2 BHK APARTMENTS  
JAGATPURA, JAIPUR

### Kopal

3 BHK AFFORDABLE VILLAS  
JAGATPURA, JAIPUR

### Panache

2 & 3 BHK HIGH-END LUXURY APARTMENTS & PENTHOUSES  
JAGATPURA, JAIPUR

### City Ville

3 & 4 BHK INDEPENDENT LUXURY VILLAS  
JAGATPURA, JAIPUR

### Bellevista

2 & 3 BHK APARTMENTS  
JAGATPURA, JAIPUR

## Benefits of buying a home from Mahima Group



25 years of excellence  
in real estate industry



Committed to  
on-time delivery



Choose from  
wide range of apartments



Options to choose your home loan provider  
as per your requirement



Professional in-house facility management company  
with dedicated customer care helpline number for hassle-free living



Safe & secure environment  
in all the projects



Free interior designing  
consultation





**MAHIMA GROUP**  
Committed to Excellence

**MAHIMA REAL ESTATE PVT. LTD.**

CORP. OFFICE: F-1, Govind Marg, Opp. Petrol Pump, Raja Park, Jaipur (INDIA) +91 141 4050607 | [marketing@mahimagroup.org](mailto:marketing@mahimagroup.org) | [www.mahimagroup.com](http://www.mahimagroup.com)

---

Architect:

**m | a | a r c h i t e c t s**

jaipur • bangalore • hyderabad

---

Disclaimer: This brochure is not a legal document and just describes the developer's intended conceptual plan. Specifications and details provided are tentative and may change at sole discretion of developer and/ or the architects.